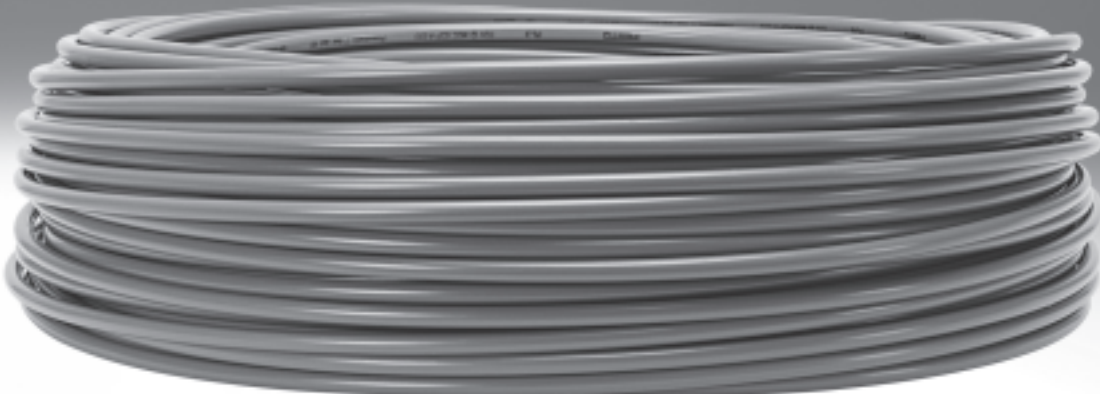



Plastic tubing PU, standard I.D.



Plastic tubing PU, standard I.D.

Product range overview and technical data

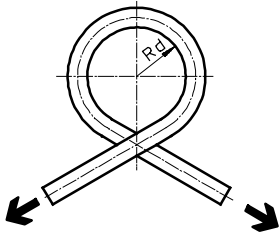


Version	Type	Inside Ø [mm]	Operating medium			Resistance					Food approval as per directive	Halogen-free	PWIS-free to FN 942 010	Suitable for chain link trunking	Approved by German Technical Control Board	Shore hardness
			Black	Compressed air	Vacuum	Chemicals	Microbes	UV radiation	Hydrolysis	Stress cracks						
	PU-9/13 TPE-U(PU) ¹⁾	9	■	■	-	-	-	++	+	+	-	■	■	■	-	A 91 ±3
		13			■	-	-									

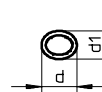
- 1) fibre-reinforced
- ++ Well suited
- + Limited suitability (upon request)
- Unsuitable

Measuring methods

Flow-relevant bending radius Rd

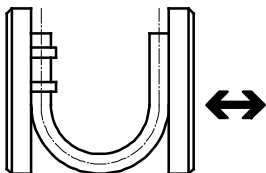


The tubing is bent in the direction of its inherent flexion until a 5% flattening of the tubing O.D. occurs. The Rd is then calculated.
There is no reduction in the flow rate up until the Rd is reached.



Cross section flattened as a result of bended tubing
 d = non deformed tubing OD
 $d1$ = deformed tubing OD

Minimum bending radius Rmin



The tubing attached to a movable plate is bent until the deformation results in a kink.
The measured value is the minimum bending radius Rmin. This Rmin leads to considerable reductions in flow.

Plastic tubing PU, standard I.D.

Technical data



Plastic tubing PU

Highly flexible plastic tubing distinguished by its great resistance to abrasion and kinks.

- - Ambient temperature
-35 ... +60 °C
- - Temperature dependent operating pressure
PU-9: 0 ... 10 bar
PU-13: -0.95 ... +10 bar

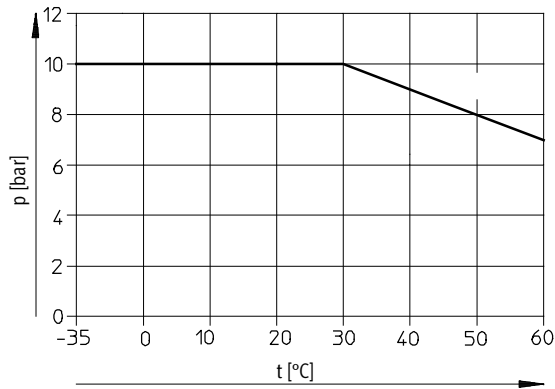
Material:
TPE-U(PU) with reinforcing fabric

Note on material:
Free of copper and PTFE
RoHS-conform



Operating medium: Compressed air in accordance with ISO 8573-1:2010 [7:--:-]

Operating pressure p as a function of temperature t



Possible fittings



Quick connectors CK
→ Internet: ck

Dimensions and ordering data

O.D. [mm]	I.D. [mm]	Flow-relevant bending radius [mm]	Weight [kg/m]	Colour	Part No.	Type	PU ¹⁾ [m]
Fibre-reinforced							
11.6	9	76	0.051	Black	12134	PU-9-SW	50
17.6	13	83	0.140	Black	12133	PU-13-SW	50

1) Packaging unit