

# Electrical connection technology, for fieldbus connection

Technical data – FBS-SUB-9-GS-...-B

- Fieldbus plug with 9-pin Sub-D connection
- Variants for different fieldbus systems
- Position of DIL switches can be read externally
- Easy to assemble



General technical data		
Type	FBS-SUB-9-GS-...-B	FBS-SUB-9-GS-1x9POL-B
Type of mounting	2 M3x20 screws	
Cable connector	Pg9	
Electrical connection	9-pin plug, Sub-D	
Permissible cable diameter [mm]	5 ... 10	
Protection class to EN 60529	IP65/67 (assembled)	
Material	Housing	Reinforced polyamide
	Seal	Nitrile rubber
	Union nut	Nickel-plated brass
	Screws	Steel
Material note	RoHS-compliant	-
Height/length/width [mm]	62/61/20	

Operating and environmental conditions		
	FBS-SUB-9-GS-...-B	FBS-SUB-9-GS-1x9POL-B
Ambient temperature [°C]	0 ... +50	
Storage temperature [°C]	-20 ... +70	
Relative air humidity	95%, non-condensing	
CE mark (see declaration of conformity)	-	<ul style="list-style-type: none"> <li>• as per EU EMC directive</li> <li>• to EU Low Voltage Directive</li> </ul>

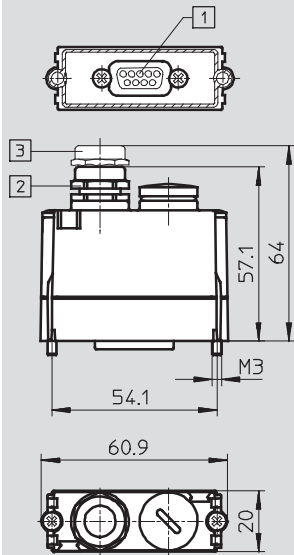
Ordering data					
	Additional functions	Fieldbus interface	Product weight [g]	Type	Part No.
	Disconnection of outgoing fieldbus segment	PROFIBUS DP 2x 2 spring-loaded terminal	60	<b>FBS-SUB-9-GS-DP-B</b>	<b>532216</b>
	Integrated RBST bridge	INTERBUS nodes CPX and CPV 2x 5 spring-loaded terminal	60	<b>FBS-SUB-9-GS-IB-B</b>	<b>532217</b>
	-	CC-Link CPX and CPV 2x 4 spring-loaded terminal BUS In - BUS Out looped through	60	<b>FBS-SUB-9-GS-2x4POL-B</b>	<b>532220</b>
	-	CPX-FEC 2x 9 spring-loaded terminal	60	<b>FBS-SUB-9-GS-1x9POL-B</b>	<b>534497</b>

# Electrical connection technology, for fieldbus connection

Technical data – FBS-SUB-9-GS-...-B

## Dimensions

Download CAD data → [www.festo.com](http://www.festo.com)



- 1 Sub-D plug, 9-pin
- 2 Cable connector, polymer, Pg9
- 3 Cable connector, metal, Pg9