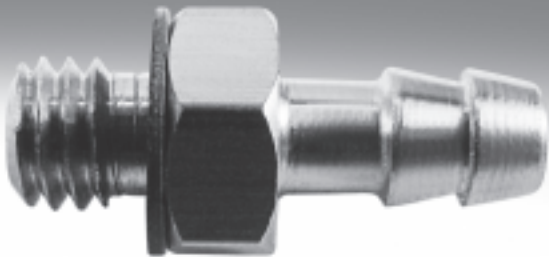


Barbed fittings



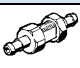




FESTO



Barbed fittings





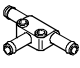
Product range overview

FESTO

Design	Version	Type	Connection D1			Connection D2	→ Page/ Internet	
			M thread	G thread	Barbed connector	Barbed connector		
Straight design	Barbed fitting with male thread and external hex							
		N	M5	-	-	3.6 4.8	6	
	Barbed fitting with male thread and external hex							
		CN	M3	-	-	2.6; 3.4	6	
			M5	-	-	2.95; 3.6; 4.8		
			-	G $\frac{1}{8}$	-	-		3.6; 4.8; 7
			-	G $\frac{1}{4}$	-	-		4.8; 7
			-	G $\frac{3}{8}$	-	-		7
	Barbed bulkhead fitting							
		SCN	-	-	2.95	-	7	
			-	-	3.6	-		
			-	-	4.8	-		
	-		-	7	-			
Barbed tubing connector								
	RTU	-	-	2.95	2.95	7		
		-	-	3.6	2.95			
		-	-	3.6	3.6			
		-	-	3.6	4.8			
		-	-	4.8	4.8			
		-	-	4.8	7			
		-	-	7	7			
L-shape	Barbed L-fitting with male thread – rotatable 360°							
		LCN	M3	-	-	2.95; 3.6	8	
			M5	-	-	2.95; 3.6; 4.8		
			-	G $\frac{1}{8}$	-	-		3.6; 4.8; 7
			-	G $\frac{1}{4}$	-	-		4.8; 7
			-	G $\frac{3}{8}$	-	-		7
	Barbed L-fitting with male thread – extended housing section rotatable 360°							
		LCNH	M5	-	-	2.95; 3.6; 4.8	9	
			-	G $\frac{1}{8}$	-	-		3.6; 4.8; 7
			-	G $\frac{1}{4}$	-	-		4.8; 7
	-		G $\frac{3}{8}$	-	-	7		
Barbed L-connector								
	L-PK	-	-	2.95	-	9		
		-	-	3.6	-			
		-	-	4.8	-			
		-	-	7	-			

Barbed fittings


Product range overview

Design	Version	Type	Connection D1			Connection D2		→ Page/ Internet
			M thread	G thread	Barbed connector	Barbed connector		
T-shape	Barbed T-fitting with male thread – rotatable 360°							
		TCN	M3	–	–	2.95; 3.6	10	
			M5	–				
			–	G $\frac{1}{8}$				2.95; 3.6; 4.8
			–	G $\frac{1}{4}$				3.6; 4.8; 7
			–	G $\frac{3}{8}$				4.8; 7
	Barbed T-connector							
		T-PK	–	–	2.95	–	10	
			–	–	3.6			
			–	–	4.8			
–			–	7				
V-shape	Barbed V-connector							
		V-PK	–	–	2.95	–	11	
			–	–	3.6			
			–	–	4.8			
			–	–	7			
Y-shape	Barbed Y-connector							
		Y-PK	–	–	2.95	–	11	
			–	–	3.6			
			–	–	4.8			
			–	–	7			
	Barbed T-connector							
		FCN	–	–	2.95	2.95	12	
			–	–	3.6	3.6		
			–	–	3.6	2.95		
			–	–	4.8	4.8		
			–	–	4.8	3.6		
			–	–	7	7		
			–	–	7	4.8		

Barbed fittings CRCN, stainless steel




Product range overview



Design	Version	Type	Connection D1			Connection D2	→ Page/ Internet	
			M thread	G thread	Barbed connector	Tubing O.D.		
Straight design		CRCN	Barbed fitting with male thread and external hex – stainless steel					13
			M5	–	–	3, 4, 6		
			–	G $\frac{1}{8}$	–	4, 6, 8		
			–	G $\frac{1}{4}$	–	6, 8		
			–	G $\frac{3}{8}$	–	8		

Barbed hose fittings C-P/N-P, for hose clip

Product range overview

Design	Version	Type	Connection D1			Connection D2	→ Page/ Internet
			G thread	R thread	NPT thread	Barbed connector	
Barbed hose fitting							
	C-...-P		G1/8	-	-	7	15
			G1/4	-	-	7; 10	
			G3/8	-	-	7; 10	
			G1/2	-	-	14.8	
Barbed hose fitting with sealing ring (aluminium and brass design)							
	N-...-P N-...-MS		G1/8	-	-	7	16
			G1/4	-	-	7; 10	
			G3/8	-	-	7; 10; 14.8	
			G1/2	-	-	10.3; 14.8	
			G3/4	-	-	14.8; 20.8	
			-	R1	-	20.8	
			-	-	NPT3/4-14	20.8	
-	-	NPT1-11 1/2	20.8				
Hose clip to DIN 3017							
	SK						17

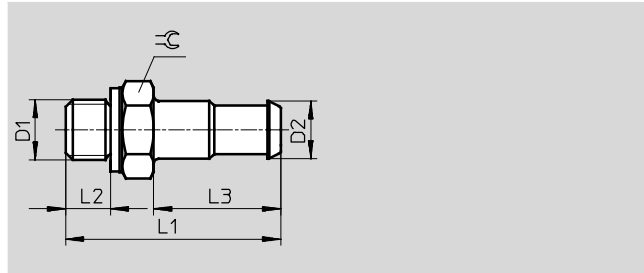
Barbed fittings N/CN

Technical data



Barbed fitting N-...-PK with sealing ring

Material:
Brass

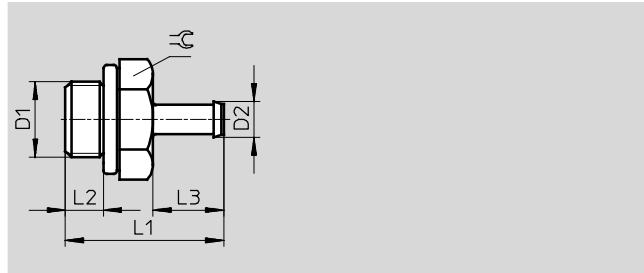


Dimensions and ordering data											
Connection	Nominal size	Barbed connector	For tubing I.D.	L1	L2	L3	⌀	Weight	Part No.	Type	PU ¹⁾
D1	[mm]	D2						[g]			
M5	2.5	3.6	3	16	3.5	8.5	7	1	4446	N-M5-PK-3	10
	2.5	4.8	4	18	3.5	10.5	7	2	4902	N-M5-PK-4	10

1) Packaging unit quantity

Barbed fitting CN-...-PK with sealing ring

Material:
M3 thread: High-alloy steel
M5 thread: Steel
G thread: Aluminium



Dimensions and ordering data											
Connection	Nominal size	Barbed connector	For tubing I.D.	L1	L2	L3	⌀	Part No.	Type	PU ¹⁾	
D1	[mm]	D2									
M thread											
M3	1.5	2.6	2	10	3	5	4.5	15871	CN-M3-PK-2	10	
	1.5	3.4	3	11	3	6	4.5	15872	CN-M3-PK-3	10	
M5	1.5	2.95	2	13.8	3.8	6	7	19521	CN-M5-PK-2	10	
	2.5	3.6	3	17.5	3.8	9.7	7	12255	CN-M5-PK-3	10	
	2.5	4.8	4	19.5	3.8	11.7	7	12256	CN-M5-PK-4	10	
G thread											
G ¹ / ₈	2.5	3.6	3	20.2	4.9	9.7	13	11944	CN- ¹ / ₈ -PK-3	10	
	3.2	4.8	4	22.2	4.9	11.7	13	11945	CN- ¹ / ₈ -PK-4	10	
	5.3	7	6	24.5	4.9	14	13	11946	CN- ¹ / ₈ -PK-6	10	
G ¹ / ₄	3.2	4.8	4	24.7	5.8	11.7	17	11947	CN- ¹ / ₄ -PK-4	10	
	5.3	7	6	27	5.8	14	17	11948	CN- ¹ / ₄ -PK-6	10	
G ³ / ₈	5.3	7	6	28	6.8	14	19	11949	CN- ³ / ₈ -PK-6	10	

1) Packaging unit quantity

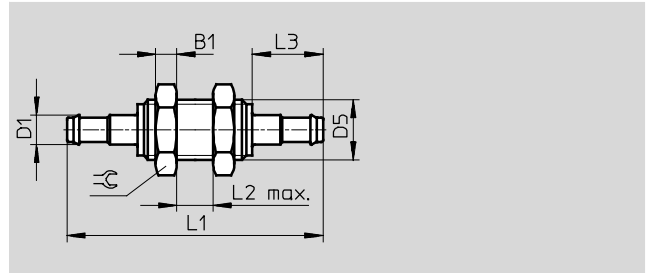
Barbed fittings N/CN

Technical data



Barbed bulkhead fitting SCN-PK

Material:
Aluminium



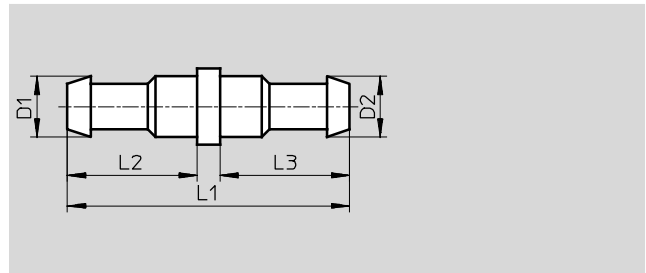
Dimensions and ordering data												
Barbed connector D1	Nominal size [mm]	For tubing I.D.	D5	B1	L1	L2	L3	∅	Weight [g]	Part No.	Type	PU ¹⁾
2.95	1.5	2	M4	2.2	23.4	6	6	7	1	19528	SCN-PK-2	10
3.6	1.9	3	M6x0.75	3.2	35.3	8	9.7	10	4	11972	SCN-PK-3	10
4.8	2.8	4	M10x1	3.5	42.4	10	11.7	13	7	11973	SCN-PK-4	10
7	4.8	6	M12x1	4	48	10	14	17	10	11974	SCN-PK-6	10

1) Packaging unit quantity

Barbed tubing connector RTU-PK

Material:
Brass

Note on materials:
Conforms to RoHS



Dimensions and ordering data											
Barbed connector		Nominal size [mm]	For tubing I.D.		L1	L2	L3	Weight [g]	Part No.	Type	PU ¹⁾
D1	D2		D1	D2							
2.95	2.95	1.5	2	2	14	6	6	1	19541	RTU-PK-2/2-B	10
3.6	2.95	1.5	3	2	17.7	9.7	6	1	19542	RTU-PK-3/2	10
3.6	3.6	2.5	3	3	19	8.5	8.5	1	4805	RTU-PK-3/3	10
3.6	4.8	2.5	3	4	20	8.5	10.5	2	4499	RTU-PK-3/4	10
4.8	4.8	3.4	4	4	23	10.5	10.5	2	4806	RTU-PK-4/4	10
4.8	7	3.4	4	6	25.5	10.5	13	2	7604	RTU-PK-4/6	10
7	7	5.3	6	6	28	13	13	3	7605	RTU-PK-6/6	10

1) Packaging unit quantity

Barbed fittings N/CN

Technical data

FESTO

Barbed L-fitting LCN-...-PK

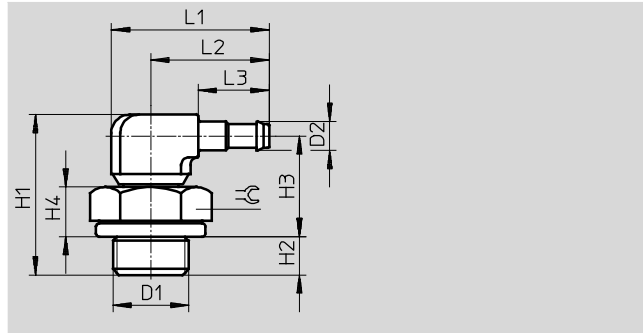
360° rotatable

Material:

M3 thread: High-alloy stainless steel,
die-cast zinc

M5 thread: Steel, die-cast zinc

G thread: Aluminium, die-cast zinc



Dimensions and ordering data															
Connection	Nominal size	Barbed connector	For tubing I.D.	H1	H2	H3	H4	L1	L2	L3	⌀	Weight	Part No.	Type	PU ¹⁾
D1	[mm]	D2										[g]			
M thread															
M3	1.3	2.95	2	14	2.8	9.2	3.0	12.2	9.6	6	4.5	2	30491	LCN-M3-PK-2-B	10
	2.0	3.6	3	15.2	2.8	9.8	3.0	15.9	13.3	9.7	4.5	2	30982	LCN-M3-PK-3	10
M5	1.3	2.95	2	16	3.8	10.2	4.0	12.2	9.6	6	7	4	19523	LCN-M5-PK-2	10
	2.0	3.6	3	20.1	3.8	13.7	4.0	18.7	14.7	9.7	7	5	12257	LCN-M5-PK-3	10
	2.9	4.8	4	21.4	3.8	13.9	4.0	20.7	16.7	11.7	7	6	12258	LCN-M5-PK-4	10
G thread															
G ¹ / ₈	2.0	3.6	3	21.2	4.9	13.7	5.6	24	17.5	9.7	13	9	11955	LCN- ¹ / ₈ -PK-3	10
	2.9	4.8	4	22.55	4.9	14.15	5.6	26	19.5	11.7	13	10	11956	LCN- ¹ / ₈ -PK-4	10
	4.9	7	6	24.45	4.9	15.15	5.6	28.5	22	14.2	13	11	11957	LCN- ¹ / ₈ -PK-6	10
G ¹ / ₄	2.9	4.8	4	25.05	5.8	15.75	7.2	26	19.5	11.7	17	13	12958	LCN- ¹ / ₄ -PK-4	10
	4.9	7	6	26.95	5.8	16.75	7.2	28.5	22	14.2	17	15	12959	LCN- ¹ / ₄ -PK-6	10
G ³ / ₈	4.9	7	6	27.95	6.8	16.75	7.2	28.5	22	14.2	19	20	12960	LCN- ³ / ₈ -PK-6	10

1) Packaging unit quantity

Barbed fittings N/CN

Technical data

FESTO

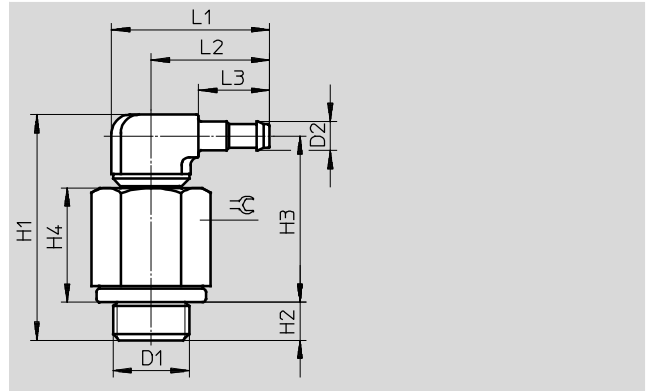
Barbed L-fitting LCNH-...-PK

360° rotatable

Material:

M thread: Steel, die-cast zinc

G thread: Aluminium, die-cast zinc



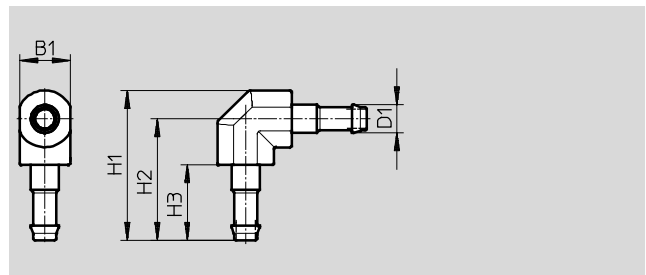
Dimensions and ordering data																
Connection	Nominal size	Barbed connector	For tubing I.D.	H1	H2	H3	H4	L1	L2	L3	⌀C	Weight	Part No.	Type	PU ¹⁾	
D1	[mm]	D2										[g]				
M thread																
M5	1.3	2.95	2	26.9	3.8	21.1	14.9	12.2	9.6	6	7	8	35982	LCNH-M5-PK-2	10	
	2.0	3.6	3	28.7	3.8	22.3	12.6	18.7	14.7	9.7	7	9	35983	LCNH-M5-PK-3	10	
	2.9	4.8	4	30.2	3.8	22.9	12.6	20.7	16.7	11.7	7	10	35984	LCNH-M5-PK-4	10	
G thread																
G ¹ / ₈	2.0	3.6	3	31.8	4.9	24.3	16.2	24.0	17.5	9.7	13	13	35985	LCNH- ¹ / ₈ -PK-3	10	
	2.9	4.8	4	33.15	4.9	24.75	16.2	26	19.5	11.7	13	14	35986	LCNH- ¹ / ₈ -PK-4	10	
	4.9	7	6	35.05	4.9	25.75	16.2	28.5	22	14.2	13	16	35987	LCNH- ¹ / ₈ -PK-6	10	
G ¹ / ₄	2.9	4.8	4	35.65	5.8	26.35	17.8	26	19.5	11.7	17	21	35988	LCNH- ¹ / ₄ -PK-4	10	
	4.9	7	6	37.55	5.8	27.35	17.8	28.5	22	14.2	17	22	35989	LCNH- ¹ / ₄ -PK-6	10	
G ³ / ₈	4.9	7	6	38.55	6.8	27.35	17.8	28.5	22	14.2	19	29	35990	LCNH- ³ / ₈ -PK-6	10	

1) Packaging unit quantity

Barbed L-connector L-PK

Material:

Brass, polyacetate



Dimensions and ordering data											
Barbed connector	Nominal size	For tubing I.D.	B1	H1	H2	H3	Weight	Part No.	Type	PU ¹⁾	
D1	[mm]						[g]				
2.95	1.5	2	4	12.2	10.2	6	1	19539	L-PK-2	10	
3.6	2.5	3	6.5	19.25	15.6	9.7	1	7473	L-PK-3	10	
4.8	3.4	4	7.8	23.1	18.7	11.7	2	9584	L-PK-4	10	
7	5.3	6	10.4	31.5	26.3	14	7	150012	L-PK-6	10	

1) Packaging unit quantity

Barbed fittings N/CN

Technical data



Barbed T-fitting TCN-...-PK

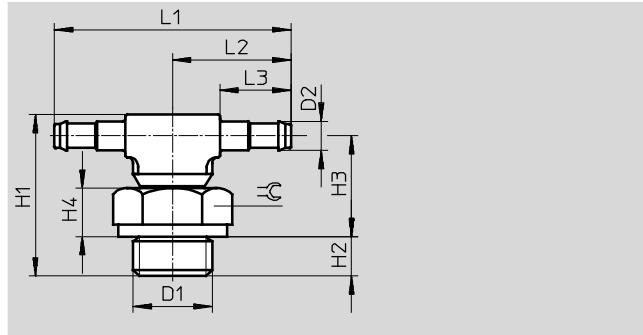
360° rotatable

Material:

M3 thread: High-alloy stainless steel,
die-cast zinc

M5 thread: Steel, die-cast zinc

G thread: Aluminium, die-cast zinc



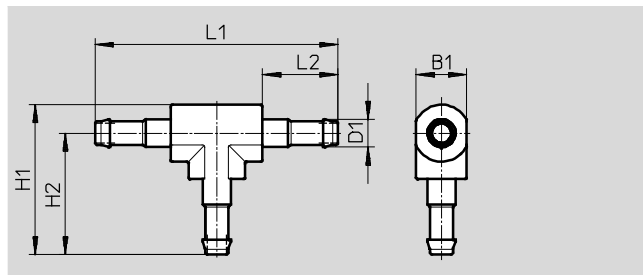
Dimensions and ordering data														
Connection	Nominal size [mm]	Barbed connector D2	For tubing I.D.	H1	H2	H3	H4	L1	L2	L3	≈C	Part No.	Type	PU ¹⁾
M thread														
M3	1.3	2.95	2	14	2.8	9.2	3.0	19.2	9.6	6	4.5	30492	TCN-M3-PK-2	10
	2.0	3.6	3	15.2	2.8	9.8	3.0	26.6	13.3	9.7	4.5	30983	TCN-M3-PK-3	10
M5	1.3	2.95	2	16	3.8	10.2	4.0	19.2	9.6	6	7	19525	TCN-M5-PK-2	10
	2.0	3.6	3	20.1	3.8	13.7	4.0	29.4	14.7	9.7	7	12259	TCN-M5-PK-3	10
	2.9	4.8	4	18.1	3.8	14.3	4.0	33.4	16.7	11.7	7	12432	TCN-M5-PK-4	10
G thread														
G ¹ / ₈	2.0	3.6	3	21.2	4.9	13.7	5.6	35	17.5	9.7	13	11961	TCN- ¹ / ₈ -PK-3	10
	2.9	4.8	4	22.55	4.9	14.15	5.6	39	19.5	11.7	13	11962	TCN- ¹ / ₈ -PK-4	10
	4.9	7	6	24.45	4.9	15.15	5.6	44	22	14.2	13	11963	TCN- ¹ / ₈ -PK-6	10
G ¹ / ₄	2.9	4.8	4	25.05	5.8	15.75	7.2	39	19.5	11.7	17	11964	TCN- ¹ / ₄ -PK-4	10
	4.9	7	6	26.95	5.8	16.75	7.2	44	22	14.2	17	11965	TCN- ¹ / ₄ -PK-6	10
G ³ / ₈	4.9	7	6	27.95	6.8	16.75	7.2	44	22	14.2	19	11966	TCN- ³ / ₈ -PK-6	10

1) Packaging unit quantity

Barbed T-connector T-PK

Material:

Brass, polyacetate



Dimensions and ordering data											
Barbed connector D1	Nominal size [mm]	For tubing I.D.	B1	H1	H2	L1	L2	Weight [g]	Part No.	Type	PU ¹⁾
2.95	1.5	2	4	12.2	10.2	20.4	6	1	30919	T-PK-2	10
3.6	2.5	3	6.5	19.25	15.6	31.2	9.7	2	7267	T-PK-3	10
4.8	3.4	4	7.8	23	18.7	37.4	11.7	3	9585	T-PK-4	10
7	5.3	6	10.4	31.5	26.3	52.6	14	11	150015	T-PK-6	10

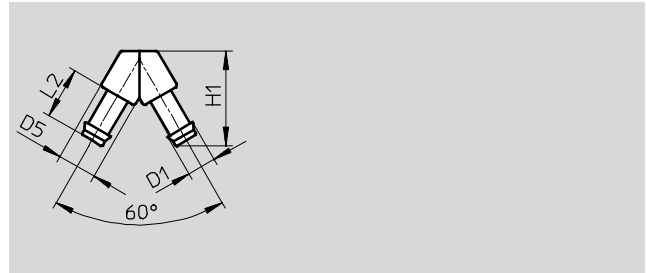
1) Packaging unit quantity

Barbed fittings N/CN

Technical data

Barbed V-connector V-PK

Material:
Brass, polyacetate

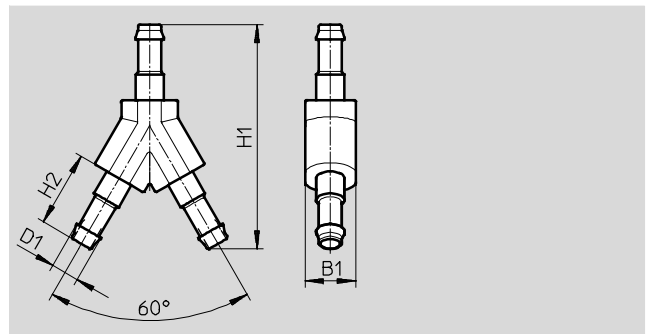


Dimensions and ordering data									
Barbed connector D1	Nominal size [mm]	For tubing I.D.	D5	H1	L2	Weight [g]	Part No.	Type	PU ²⁾
2.95	1.5	2	4	11.3	6	1	30918	V-PK-2 ¹⁾	10
3.6	2.5	3	6.5	17.6	9.7	1	7268	V-PK-3	10
4.8	3.4	4	7.8	21	11.7	2	30920	V-PK-4	10
7	5.3	6	10.4	29.8	14	8	150014	V-PK-6	10

- 1) Conforms to RoHS
- 2) Packaging unit quantity

Barbed Y-connector Y-PK

Material:
Brass, polyacetate



Dimensions and ordering data									
Barbed connector D1	Nominal size [mm]	For tubing I.D.	B1	H1	H2	Weight [g]	Part No.	Type	PU ²⁾
2.95	1.5	2	4	18	6	1	19540	Y-PK-2 ¹⁾	10
3.6	2.5	3	6.5	28.8	9.7	2	7269	Y-PK-3	10
4.8	3.4	4	7.8	34.5	11.7	3	9586	Y-PK-4	10
7	5.3	6	10.4	49.2	14	12	150013	Y-PK-6	10

- 1) Conforms to RoHS
- 2) Packaging unit quantity

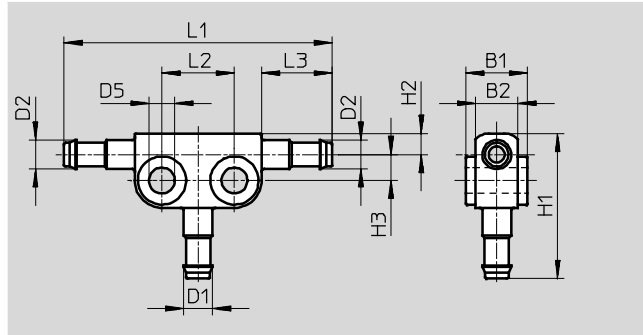
Barbed fittings N/CN

Technical data



Barbed T-connector FCN

Material:
Die-cast zinc





Dimensions and ordering data																		
Connection		Nominal size [mm]	For tubing I.D.		B1	B2	D5	H1	H2	H3	L1	L2	L3	Weight [g]	Part No.	Type	PU ¹⁾	
D1	D2		D1	D2														
2.95	2.95	1.3	2	2	6	4	3.2	15.7	3.1	2.6	28	8	6	5	19527	FCN-3-PK-2-B	10	
3.6	3.6	2	3	3	8.4	5.2	4.3	21.6	3.5	3.9	38.4	10	9.7	8	14768	FCN-3-PK-3	10	
2.95	3.6	2/1.3	2	3	8.4	5.2	4.3	17.9	3.5	3.9	38.4	10	9.7	8	31314	FCN-3-PK-3/2	10	
4.8	4.8	2.9	4	4	10.2	7	4.3	24	3.5	4.3	44.4	12	11.7	12	14769	FCN-3-PK-4	10	
3.6	4.8	2.9/2	3	4	10.2	7	4.3	22	3.5	4.3	44.4	12	11.7	12	31315	FCN-3-PK-4/3	10	
7	7	4.9	6	6	12	8.8	4.3	28.4	4.4	5.3	49.4	12	14.2	16	14770	FCN-3-PK-6	10	
4.8	7	4.9/2.9	4	6	12	8.8	4.3	25.9	4.4	5.3	49.4	12	14.2	16	31316	FCN-3-PK-6/4	10	

1) Packaging unit quantity

Barbed fittings CRCN, stainless steel

Technical data

Barbed fitting CRCN
with sealing ring OK

-  - Ambient temperature
0 ... +60 °C
-  - Operating pressure
-0.95 ... +10 bar



Tube assembly/disassembly

Assembly:

1. Grip the tube as close to the end as possible.
2. Turn the tube (approx. 90°) around the nipple axis when pushing it on.

Disassembly:

1. Insert a blade behind the sealing and retaining edge to disconnect the tube.
Make sure that the barbed fitting is not damaged at the sealing and retaining edge.
2. Pull off the tube.

Possible accessories

Connecting pliers ZMS-PK-3/4
→ Internet: zms
Disconnecting pliers ZDS-PK-3, ZDS-PK-4
→ Internet: zds

General technical data

Pneumatic connection 1	Male thread								
	M5			G1/8			G1/4		G3/8
Pneumatic connection 2 for tubing O.D. [mm]	3	4	6	4	6	8	6	8	8
Nominal size [mm]	1.5	2.5	2.5	2.5	3.2	5.3	3.2	5.3	5.3
Type of seal on threaded plug	Sealing ring								
Usable tubing	PUN, PEN, PAN, PFAN								

Operating and environmental conditions

Operating pressure [bar]	-0.95 ... +10
Operating medium	Compressed air to ISO 8573-1:2010 [7:-:-]
Note on operating/pilot medium	Lubricated operation possible (required during subsequent operation)
Ambient temperature [°C]	0 ... +60
Corrosion resistance class CRC ¹⁾	2
Suitable for use in the food industry ²⁾	As per manufacturer's declaration

- 1) Corrosion resistance class 2 according to Festo standard 940 070
Components subject to moderate corrosion stress. Externally visible parts with primarily decorative surface requirements which are in direct contact with a normal industrial environment or media such as coolants or lubricating agents.
- 2) The sealing ring CRO must be used when using the barbed fitting in the food industry.

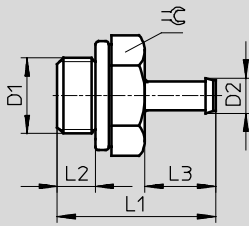
Materials

Housing	High-alloy stainless steel
Threaded seal	Stainless steel, fluoro elastomer
Note on materials	RoHS-compliant

Barbed fittings CRCN, stainless steel

Technical data

Dimensions Download CAD data → www.festo.com



Ordering data											
Connection	Nominal size [mm]	For tubing O.D.	D2	L1	L2	L3	±C	Weight/ piece [g]	Part No.	Type	PU ¹⁾
M thread											
M5	1.5	3	2.95	13.8	3.8	6	7	1.8	30985	CRCN-M5-PK-2	10
	2.5	4	3.6	17.5	3.8	9.7	7	1.74	13967	CRCN-M5-PK-3	10
	2.5	6	4.8	19.5	3.8	11.7	7	2.58	13968	CRCN-M5-PK-4	10
G thread											
G ¹ / ₈	2.5	4	3.6	20.2	4.9	9.7	13	7.52	13969	CRCN- ¹ / ₈ -PK-3	10
	3.2	6	4.8	22.2	4.9	11.7	13	7.86	13970	CRCN- ¹ / ₈ -PK-4	10
	5.3	8	7	24.5	4.9	14	13	7.5	13971	CRCN- ¹ / ₈ -PK-6	10
G ¹ / ₄	3.2	6	4.8	24.7	5.8	11.7	17	17.73	13972	CRCN- ¹ / ₄ -PK-4	1
	5.3	8	7	27	5.8	14	17	16.5	13973	CRCN- ¹ / ₄ -PK-6	1
G ³ / ₈	5.3	8	7	28	6.8	14	19	23.7	13974	CRCN- ³ / ₈ -PK-6	1

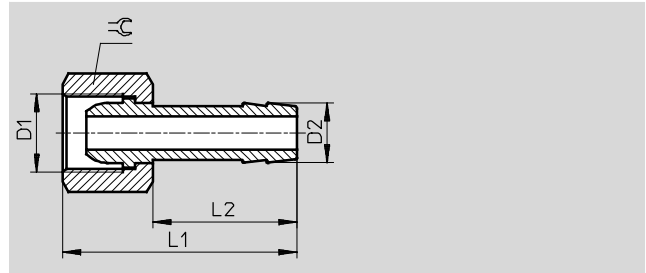
1) Packaging unit

Barbed hose fittings C-P/N-P, for hose clip

Technical data

Barbed hose fitting C-...-P

Material:
Brass



Dimensions and ordering data										
Connection	Nominal size	Connection	For tubing I.D.	L1	L2	⌀G	Weight	Part No.	Type	PU ¹⁾
D1	[mm]	D2					[g]			
G thread										
G ¹ / ₈	4	7	6	36	24	13	18	2021	C-1/8-P-6	10
G ¹ / ₄	4.5	7	6	39	24	17	28	2022	C-1/4-P-6	10
	5.5	10	9	39	24	17	34	2023	C-1/4-P-9	10
G ³ / ₈	4.5	7	6	39	24	19	31	2024	C-3/8-P-6	1
	6.5	10	9	39	24	19	34	2025	C-3/8-P-9	1
G ¹ / ₂	11	14.8	13	50	30	24	64	2026	C-1/2-P-13	1

1) Packaging unit quantity

Barbed hose fittings C-P/N-P, for hose clip

Technical data

FESTO

Barbed hose fitting N-...-P

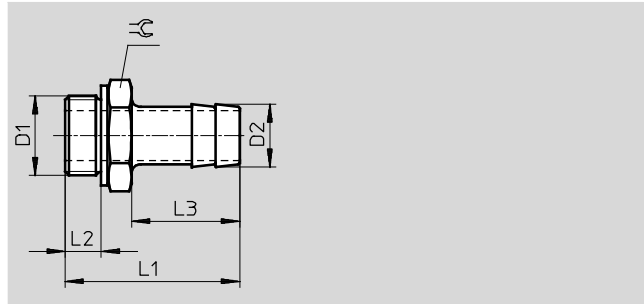
Material:

N...-P: Blue anodised aluminium

N...-P...MS: Brass

Note on materials:

RoHS-compliant



General technical data	
Type of seal on threaded plug	Sealing ring OK (only G thread)

Operating and environmental conditions	
Operating medium	Compressed air in accordance with ISO 8573-1:2010 [7:--:-]
Note on operating/pilot medium	Operation with lubricated medium possible (in which case lubricated operation will always be required)

Dimensions and ordering data												
Pneumatic connection		Nominal size [mm]	Barbed connector D2	L1	L2	L3	≈	CRC ¹⁾	Part No.	Type	PU ²⁾	
D1												
G thread												
G ¹ / ₈	PK-6	4.5	7	34.7	4.9	24.2	13	2	3605	N- ¹ / ₈ -P-6	10	
G ¹ / ₄	PK-6	4.5	7	37.1	5.8	24.1	17	1	3606	N- ¹ / ₄ -P-6	10	
	PK-9	6.5	10	37.1	5.8	24.1	17		3607	N- ¹ / ₄ -P-9	10	
G ³ / ₈	PK-6	4.5	7	38.1	6.8	24.1	19		3608	N- ³ / ₈ -P-6	10	
	PK-9	7.6	10	38.1	6.8	24.1	19		3609	N- ³ / ₈ -P-9	10	
	PK-13	11	14.8	45.4	6.8	30	19		36160	N- ³ / ₈ -P-13	1	
G ¹ / ₂	PK-9	8	10.3	39.5	8.15	24	24		3610	N- ¹ / ₂ -P-9	1	
	PK-13	11	14.8	45.5	8.15	30	24		3611	N- ¹ / ₂ -P-13	1	
G ³ / ₄	PK-13	11	14.8	50	9.05	30	32		3612	N- ³ / ₄ -P-13	1	
	PK-19	16.5	20.8	56	9.05	36	32		3613	N- ³ / ₄ -P-19	1	
G ¹ / ₈	PK-6	4.5	7	34.7	4.9	24.2	13		1	15630	N- ¹ / ₈ -P-6-MS	10
G ¹ / ₄	PK-6	4.5	7	37.1	5.8	24.1	17			15631	N- ¹ / ₄ -P-6-MS	10
	PK-9	6.5	10	37.1	5.8	24.1	17			15632	N- ¹ / ₄ -P-9-MS	10
G ³ / ₈	PK-6	4.5	7	38.1	6.8	24.1	19	15633		N- ³ / ₈ -P-6-MS	10	
	PK-9	7.6	10	38.1	6.8	24.1	19	15634		N- ³ / ₈ -P-9-MS	10	
	PK-13	11	14.8	45.4	6.8	30	19	36161		N- ³ / ₈ -P-13-MS	1	
G ¹ / ₂	PK-9	8	10.3	39.5	8.15	24	24	15635		N- ¹ / ₂ -P-9-MS	1	
	PK-13	11	14.8	45.5	8.15	30	24	15636		N- ¹ / ₂ -P-13-MS	1	
G ³ / ₄	PK-13	11	14.8	50	9.05	30	32	15637		N- ³ / ₄ -P-13-MS	1	
	PK-19	16.5	20.8	56	9.05	36	32	15638		N- ³ / ₄ -P-19-MS	1	
R thread												
R1	PK-19	16.5	20.8	68.6	-	36	34	2		572260	N-1-P-19	1
NPT thread												
NPT ³ / ₄ -14	PK-19	16.5	20.8	66.68	-	36	30.17	2	564848	N- ³ / ₄ -P-19-NPT	1	
NPT1-11 ¹ / ₂	PK-19	16.5	20.8	74	-	36	34		572243	N-1-P-19-NPT	1	

- Corrosion resistance class 1 according to Festo standard 940 070
Components requiring low corrosion resistance. Transport and storage protection. Parts that do not have primarily decorative surface requirements, e.g. in internal areas that are not visible or behind covers.
Corrosion resistance class 2 according to Festo standard 940 070
Components requiring moderate corrosion resistance. Externally visible parts with primarily decorative surface requirements which are in direct contact with a normal industrial environment or media such as coolants or lubricating agents.
- Packaging unit quantity

Hose clips SK

Technical data

Hose clip SK
to DIN 3017

The hose clips are equipped with
a worm thread. Band width 9 mm.

Material:
Steel



Dimensions and ordering data				
Clamping range \varnothing [mm]	Weight [g]	Part No.	Type	PU ¹⁾
10 ... 16	7	9274	SK-10-16	10
16 ... 27	12	9275	SK-16-27	10
20 ... 32	13	9276	SK-20-32	10

1) Packaging unit quantity