

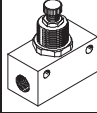
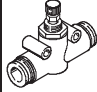
One-way flow control valves GR/GRA, in-line installation



One-way flow control valves GR/GRA, in-line installation

FESTO

Product range overview and type codes

Product range overview									
Version	Valve function	Version	Type	Connection direction	Pneumatic connection 1	Pneumatic connection 2	qnN ¹⁾ [l/min]	Adjustment component	→ Page/ Internet
In-line installation	Metal								
	One-way flow control function		GR/GRA	Inline	M3, M5, G ¹ / ₈ , G ¹ / ₄ , G ³ / ₈ , G ¹ / ₂ , G ³ / ₄	M3, M5, G ¹ / ₈ , G ¹ / ₄ , G ³ / ₈ , G ¹ / ₂ , G ³ / ₄	29.5 ... 3,300	Knurled screw	3
	Polymer								
	One-way flow control function		GR	Inline	QS-3, QS-4, QS-6, QS-8	QS-3, QS-4, QS-6, QS-8	25 ... 225	Knurled screw	10

1) Standard nominal flow rate in direction of flow control.

Type codes

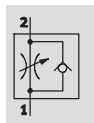
		GR	-	QS-4	-	LF	-	
Type								
GR	One-way flow control valve, in-line installation							
GRA	One-way flow control valve, in-line installation							
Pneumatic connection 1 and 2								
M3	Female thread M3							
M5	Female thread M5							
1/8	Female thread G ¹ / ₈							
1/4	Female thread G ¹ / ₄							
3/8	Female thread G ³ / ₈							
1/2	Female thread G ¹ / ₂							
3/4	Female thread G ³ / ₄							
QS-3	Push-in connector for tubing O.D. 3 mm							
QS-4	Push-in connector for tubing O.D. 4 mm							
QS-6	Push-in connector for tubing O.D. 6 mm							
QS-8	Push-in connector for tubing O.D. 8 mm							
Flow rate characteristic								
LF	Low flow							
Generation								
B	B series							

One-way flow control valves GR/GRA, in-line installation

FESTO

Technical data – Female thread, metal

One-way flow control function



Flow rate

29.5 ... 3,300 l/min

Temperature range

-20 ... +75 °C

Pressure

0.1 ... 15 bar



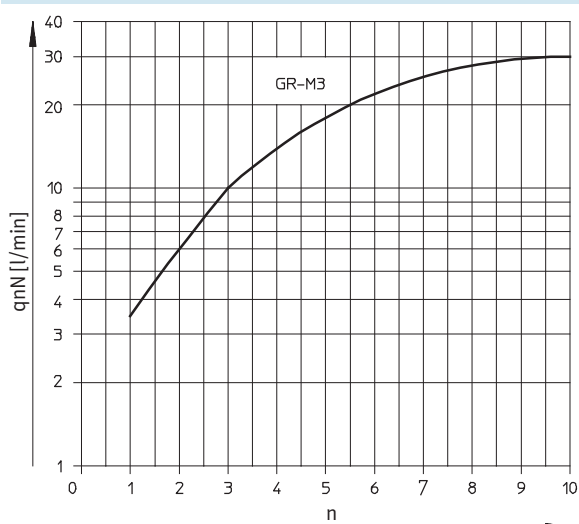
General technical data							
Valve function	One-way flow control function						
Pneumatic connection 2	M3	M5	G1/8	G1/4	G3/8	G1/2	G3/4
Pneumatic connection 1	M3	M5	G1/8	G1/4	G3/8	G1/2	G3/4
Adjustment component	Knurled screw						
Type of mounting	Via through-hole						
	Front panel mounting						
Mounting position	Any						

Note: This product conforms to ISO 1179-1 and ISO 228-1

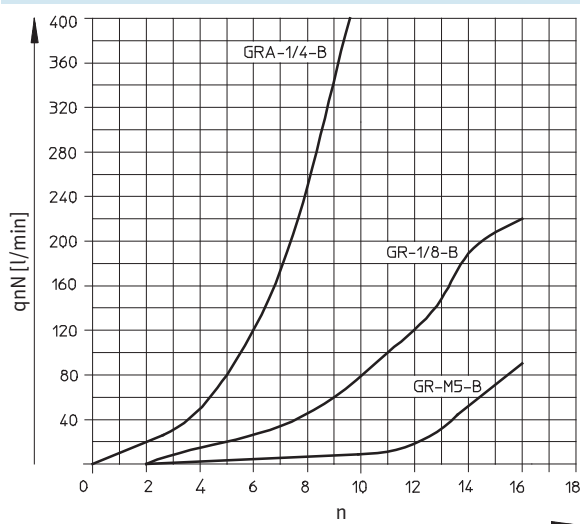
Operating and environmental conditions							
Pneumatic connection 2	M3	M5	G1/8	G1/4	G3/8	G1/2	G3/4
Operating pressure [bar]	0.3 ... 8	0.5 ... 10		0.1 ... 10			0.3 ... 15
Operating medium	Compressed air in accordance with ISO 8573-1:2010 [6:4:4]	Compressed air in accordance with ISO 8573-1:2010 [7:4:4]				Compressed air in accordance with ISO 8573-1:2010 [7:-:-]	
Note on operating/pilot medium	Operation with lubricated medium possible (in which case lubricated operation will always be required)						
Ambient temperature [°C]	-10 ... +60	-20 ... +60		-20 ... +75			-10 ... +60
Temperature of medium [°C]	-10 ... +60	-20 ... +60		-20 ... +75			-10 ... +60
Storage temperature [°C]	-10 ... +40	-20 ... +60		-20 ... +75			-10 ... +60

Standard nominal flow rate q_{nN} at 6 → 5 bar as a function of turns of the adjusting screw n

GR-M3



GR-M5-B, GR-1/8-B, GRA-1/4-B



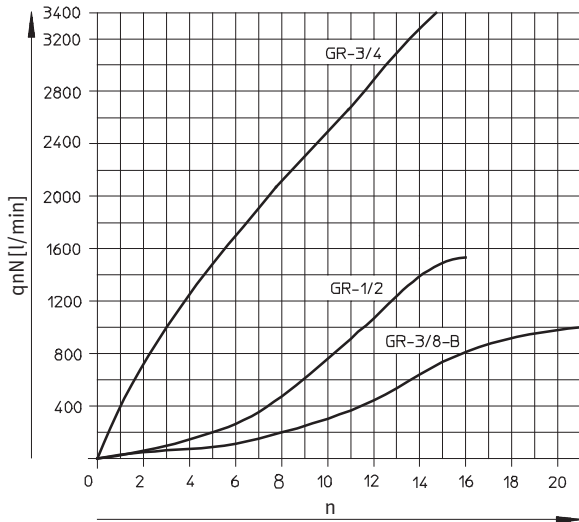
One-way flow control valves GR/GRA, in-line installation

Technical data – Female thread, metal

FESTO

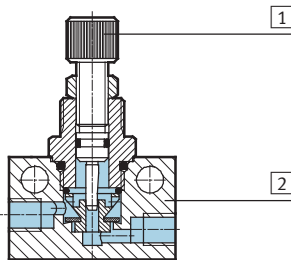
Standard nominal flow rate q_{nN} at 6 \rightarrow 5 bar as a function of turns of the adjusting screw n

GR-3/8-B, GR-1/2, GR-3/4



Materials

Sectional view



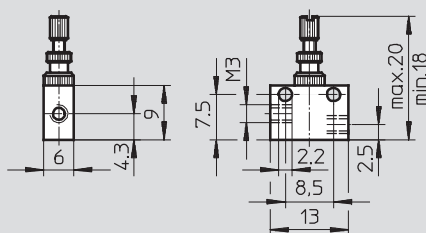
One-way flow control valve

1	Adjusting screw	Brass
2	Housing	GR-M3, GR-M5-B, GR-1/8-B, GR-3/4: Wrought aluminium alloy GRA-1/4-B, GR-3/8-B, GR-1/2: Die-cast zinc
-	Seals	NBR
Note on materials		RoHS-compliant

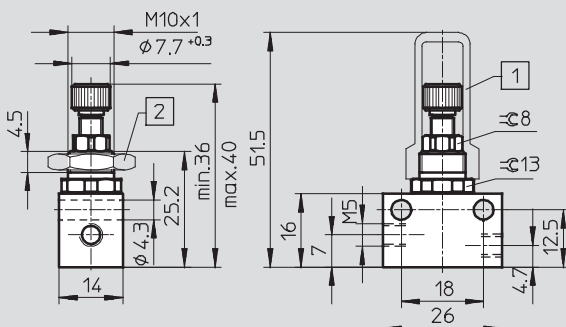
Dimensions

Download CAD Data www.festo.com/us/cad

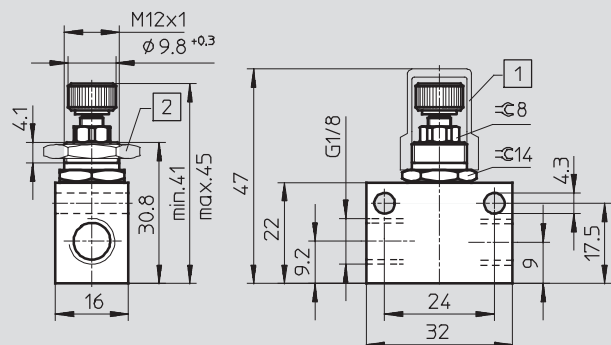
GR-M3



GR-M5-B



GR-1/8-B



Note: This product conforms to ISO 1179-1 and ISO 228-1

1 Cover cap GRK → 8

2 Hex nut GRM → 8

One-way flow control valves GR/GRA, in-line installation

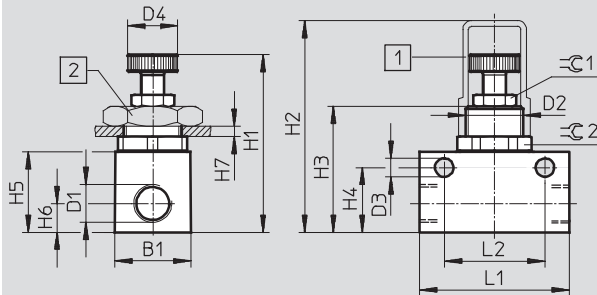
FESTO

Technical data – Female thread, metal

Dimensions

Download CAD Data → www.festo.com/us/cad

GRA-1/4-B



Note: This product conforms to ISO 1179-1 and ISO 228-1

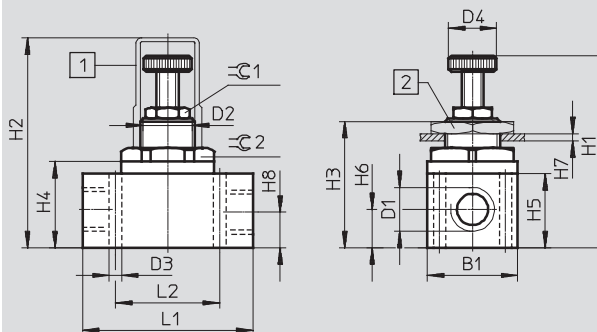
- 1 Cover cap GRK → 8 2 Hex nut GRM → 8

Type	Connection	B1	D2	D3 Ø	D4 Ø	H1		H2	H3	H4	H5	H6	H7 max.	L1	L2	≈C 1	≈C 2
						min.	max.										
GRA-1/4-B	G1/4	26.5	M20x1.5	6.4	17.4	56	62	73.5	44	22.5	28	10	3.5	52	35 ±0.1	13	24

Dimensions

Download CAD Data → www.festo.com/us/cad

GR-3/8-B



Note: This product conforms to ISO 1179-1 and ISO 228-1

- 1 Cover cap GRK → 8 2 Hex nut GRM → 8

Type	Connection	B1	D2	D3 Ø	D4 Ø	H1		H2	H3	H4	H5	H6	H7 max.	H8	L1	L2	≈C 1	≈C 2
						min.	max.											
GR-3/8-B	G3/8	33	M20x1.5	4.5	17.5	62.5	74	76.5	46	31.5	27	14	3.5	13	62	38	13	30

One-way flow control valves GR/GRA, in-line installation

Technical data – Female thread, metal

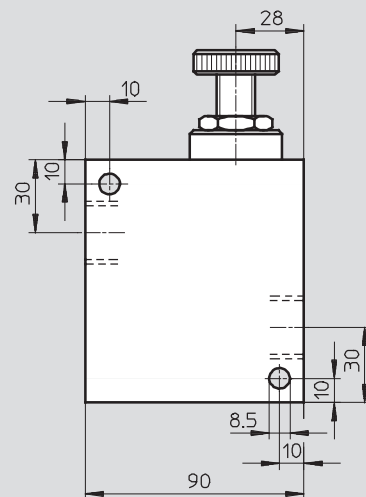
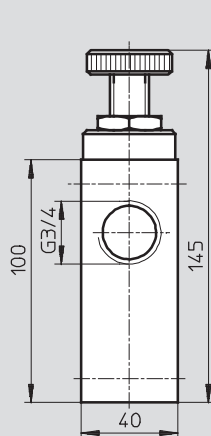
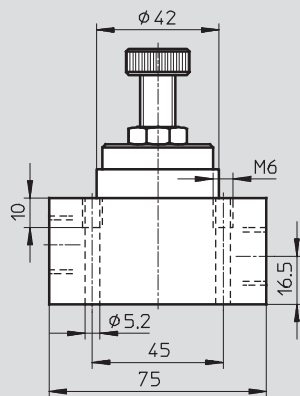
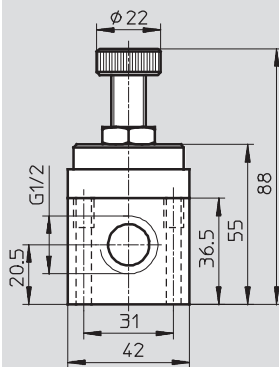
FESTO

Dimensions

Download CAD Data → www.festo.com/us/cad

GR-1/2

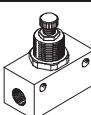
GR-3/4



Note: This product conforms to ISO 1179-1 and ISO 228-1

Note: This product conforms to ISO 1179-1 and ISO 228-1

Ordering data – One-way flow control function

Pneumatic connection		Standard nominal flow rate q _{nN} at 6 → 5 bar		Weight [g]	Part No.	Type
		in direction of flow control	in non-return direction			
		2	1			
Knurled screw						
	M3	M3	29.5	26 ... 27.5	2.5	15899 GR-M3
	M5	M5	94	115	21	151213 GR-M5-B
	G1/8	G1/8	220	217	34	151215 GR-1/8-B
	G1/4	G1/4	420	780	180	6509 GRA-1/4-B
	G3/8	G3/8	1,010	1,150	225	6308 GR-3/8-B
	G1/2	G1/2	1,620	2,760	517	3720 GR-1/2
	G3/4	G3/4	3,300	4,800	938	2103 GR-3/4

One-way flow control valves GR/GRA, in-line installation

FESTO

Accessories

Hex nut GRM

For front panel mounting

Material: Steel



Ordering data			
For type	Description	Part No.	Type
GR-M5-B	Thread M10x1	6444	GRM-M5
GR-1/8-B	Thread M12x1	2107	GRM-1/8
GRA-1/4-B, GR-3/8-B	Thread M20x1.5	204596	GRM-3/8

Cover cap GRK

Material: PP



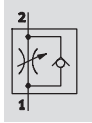
Ordering data			
For type	Description	Part No.	Type
GR-M5-B	Thread M10x1	6436	GRK-M5
GR-1/8-B	Thread M12x1	2105	GRK-1/8
GRA-1/4-B, GR-3/8-B	Thread M20x1.5	6309	GRK-3/8-B

One-way flow control valves GR, in-line installation

FESTO

Technical data – Push-in connector QS, polymer

One-way flow control function



Flow rate

25 ... 225 l/min

Temperature range

–10 ... +60 °C

Pressure

0.2 ... 10 bar



General technical data				
Valve function	One-way flow control function			
Pneumatic connection 2	QS-3	QS-4	QS-6	QS-8
Pneumatic connection 1	QS-3	QS-4	QS-6	QS-8
Adjustment component	Knurled screw			
Type of mounting	Via through-hole			
	Front panel mounting			
	Via accessories			
Mounting position	Any			

Operating and environmental conditions	
Operating pressure [bar]	0.2 ... 10
Operating medium	Compressed air in accordance with ISO 8573-1:2010 [7:4:4]
Note on operating/pilot medium	Operation with lubricated medium possible (in which case lubricated operation will always be required)
Ambient temperature [°C]	–10 ... +60
Temperature of medium [°C]	–10 ... +60
Storage temperature [°C]	–10 ... +40

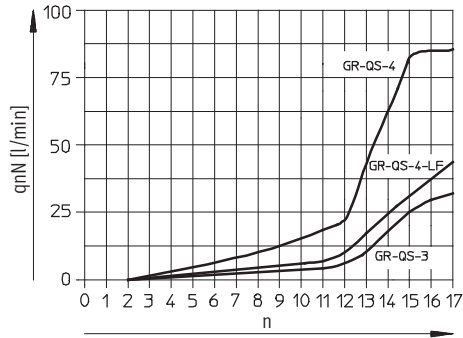
One-way flow control valves GR, in-line installation

FESTO

Technical data – Push-in connector QS, polymer

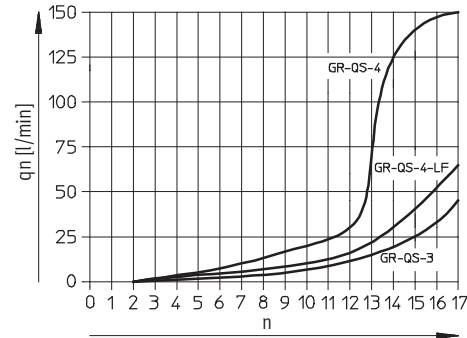
Standard nominal flow rate q_{nN} at 6 \rightarrow 5 bar
as a function of turns of the adjusting screw n

GR-QS-3/GR-QS-4

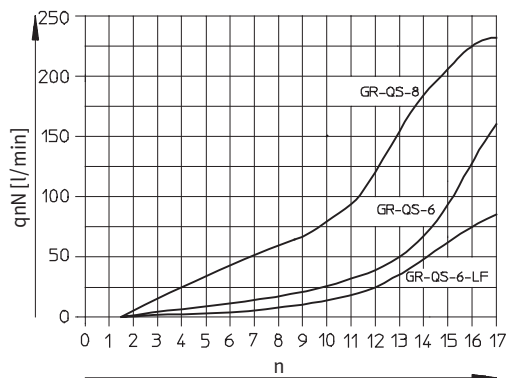


Standard flow rate q_n at 6 \rightarrow 0 bar
as a function of turns of the adjusting screw n

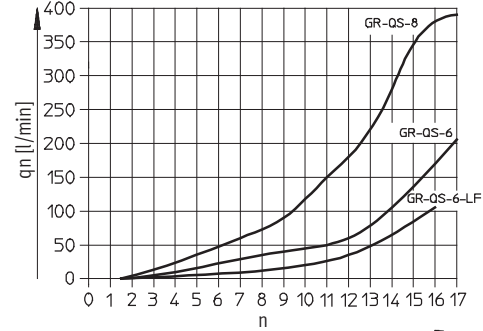
GR-QS-3/GR-QS-4



GR-QS-6/GR-QS-8

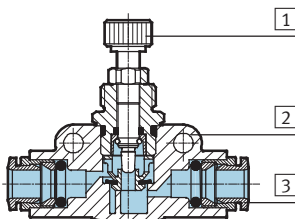


GR-QS-6/GR-QS-8



Materials

Sectional view



One-way flow control valve

1	Adjusting screw	Nickel-plated brass
2	Housing	PA, reinforced
3	Releasing ring	POM
–	Seals	NBR

One-way flow control valves GR, in-line installation

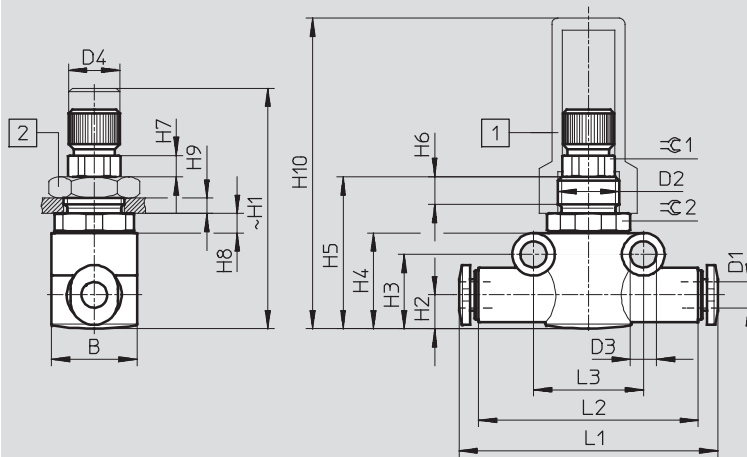
Technical data – Push-in connector QS, polymer

FESTO

Dimensions

Download CAD Data → www.festo.com/us/cad


Knurled screw



Type	Tubing O.D. D1	B	D2	D3 Ø	D4 Ø	H1		H2	H3	H4
						min.	max.			
GR-QS-3	3	14	M10x1	4.3 ±0.1	8.0 -0.3	35.9	40	5.55	12.2	15.7
GR-QS-4	4	14	M10x1	4.3 ±0.1	8.0 -0.3	35.9	40	5.55	12.2	15.7
GR-QS-6	6	16	M12x1	4.3 ±0.1	10.1 -0.3	40.4	44.5	8.4	17.3	21.3
GR-QS-8	8	16	M12x1	4.3 ±0.1	10.1 -0.3	40.4	44.5	8.4	17.3	21.3

Type	H5	H6	H7	H8	H9 max.	H10	L1	L2	L3	≈ 1	≈ 2
GR-QS-3	24.9	4.5	3.5	3.2	2.5	50.9	41.8	36	18	8	13
GR-QS-4	24.9			3.2	2.5	50.9	42.4	36	18		13
GR-QS-6	30.1			2.8	3.5	46.1	51.6	43	24		14
GR-QS-8	30.1			2.8	3.5	46.1	53.4	43	24		14

Ordering data – One-way flow control function

	Pneumatic connection		Standard nominal flow rate q _N at 6 → 5 bar		Standard flow rate q _n at 6 → 0 bar		Weight	Part No.	Type
			in direction of flow control	in non-return direction	in direction of flow control	in non-return direction			
	2	1	[l/min]	[l/min]	[l/min]	[l/min]			
Knurled screw									
	QS-3	QS-3	25	65 ... 70	100	125 ... 135	15	193965	GR-QS-3
	QS-4	QS-4	40	100 ... 110	130	170 ... 185	15	193966	GR-QS-4-LF
			85	100 ... 110	150	170 ... 185	15	193967	GR-QS-4
	QS-6	QS-6	75	260 ... 270	110	500 ... 510	25	193968	GR-QS-6-LF
			160	260 ... 270	205	500 ... 510	25	193969	GR-QS-6
	QS-8	QS-8	225	350 ... 400	390	610 ... 640	26	193970	GR-QS-8

One-way flow control valves GR, in-line installation

FESTO

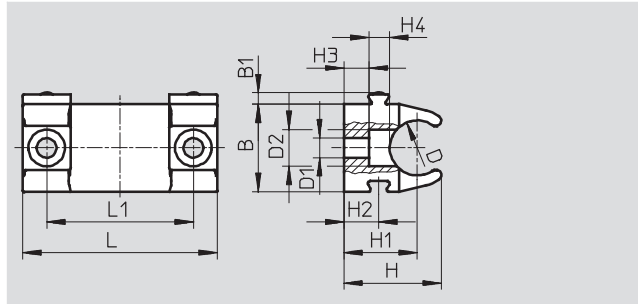
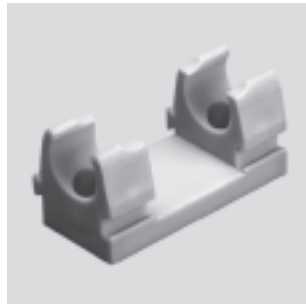
Accessories

Retainer GR-H

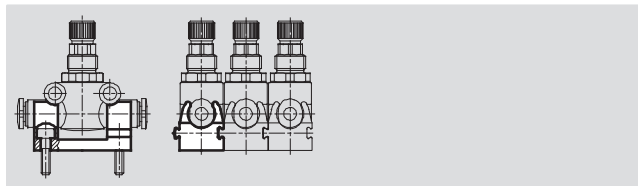
For mounting on a flat surface via M3 screws. The one-way flow control valve is snapped into the retainer. The retainer can be fitted in any position.

Material: POM

Free of copper and PTFE



Linking of multiple retainers via dovetail slot



Dimensions and ordering data								
For type	B	B1	D	D1	D2	H	H1	H2
GR-QS-3, GR-QS-4	14.3	1.9	9	3.2	6	16	12	5.7
GR-QS-6, GR-QS-8	19.8	1.9	14.5	3.2	6	19.2	13	5.7

For type	H3	H4	L	L1	Weight [g]	Part No.	Type
GR-QS-3, GR-QS-4	4.1	3.4	31.8	24	4	195495	GR-H-QS-3-4
GR-QS-6, GR-QS-8	2.3	3.4	31.8	24	5	195496	GR-H-QS-6-8

Hex nut GRM

For front panel mounting

Material: Steel



Ordering data			
For type	Description	Part No.	Type
GR-QS-3, GR-QS-4	Thread M10x1	6444	GRM-M5
GR-QS-6, GR-QS-8	Thread M12x1	2107	GRM-1/8

Cover cap GRK

Material: PP



Ordering data			
For type	Description	Part No.	Type
GR-QS-3, GR-QS-4	Thread M10x1	6436	GRK-M5
GR-QS-6, GR-QS-8	Thread M12x1	2105	GRK-1/8

Product Range and Company Overview

A Complete Suite of Automation Services

Our experienced engineers provide complete support at every stage of your development process, including: conceptualization, analysis, engineering, design, assembly, documentation, validation, and production.



Custom Automation Components
Complete custom engineered solutions



Custom Control Cabinets
Comprehensive engineering support and on-site services



Complete Systems
Shipment, stocking and storage services

The Broadest Range of Automation Components

With a comprehensive line of more than 30,000 automation components, Festo is capable of solving the most complex automation requirements.



Electromechanical
Electromechanical actuators, motors, controllers & drives



Pneumatics
Pneumatic linear and rotary actuators, valves, and air supply



PLCs and I/O Devices
PLC's, operator interfaces, sensors and I/O devices

Supporting Advanced Automation... As No One Else Can!

Festo is a leading global manufacturer of pneumatic and electromechanical systems, components and controls for industrial automation, with more than 12,000 employees in 56 national headquarters serving more than 180 countries. For more than 80 years, Festo has continuously elevated the state of manufacturing with innovations and optimized motion control solutions that deliver higher performing, more profitable automated manufacturing and processing equipment. Our dedication to the advancement of automation extends beyond technology to the education and development of current and future automation and robotics designers with simulation tools, teaching programs, and on-site services.

Quality Assurance, ISO 9001 and ISO 14001 Certifications

Festo Corporation is committed to supply all Festo products and services that will meet or exceed our customers' requirements in product quality, delivery, customer service and satisfaction.

To meet this commitment, we strive to ensure a consistent, integrated, and systematic approach to management that will meet or exceed the requirements of the ISO 9001 standard for Quality Management and the ISO 14001 standard for Environmental Management.



© Copyright 2008, Festo Corporation. While every effort is made to ensure that all dimensions and specifications are correct, Festo cannot guarantee that publications are completely free of any error, in particular typing or printing errors. Accordingly, Festo cannot be held responsible for the same. For Liability and Warranty conditions, refer to our "Terms and Conditions of Sale", available from your local Festo office. All rights reserved. No part of this publication may be reproduced, distributed, or transmitted in any form or by any means, electronic, mechanical, photocopying or otherwise, without the prior written permission of Festo. All technical data subject to change according to technical update.



Printed on recycled paper at New Horizon Graphic, Inc., FSC certified as an environmentally friendly printing plant.

Festo North America

Festo Regional Contact Center

5300 Explorer Drive
Mississauga, Ontario L4W 5G4
Canada

USA Customers:

For ordering assistance,

Call: 1.800.99.FESTO (1.800.993.3786)

Fax: 1.800.96.FESTO (1.800.963.3786)

Email: customer.service@us.festo.com

For technical support,

Call: 1.866.GO.FESTO (1.866.463.3786)

Fax: 1.800.96.FESTO (1.800.963.3786)

Email: product.support@us.festo.com

Canadian Customers:

Call: 1.877.GO.FESTO (1.877.463.3786)

Fax: 1.877.FX.FESTO (1.877.393.3786)

Email: festo.canada@ca.festo.com

USA Headquarters

Festo Corporation
395 Moreland Road
P.O. Box 18023
Hauppauge, NY 11788, USA
www.festo.com/us

USA Sales Offices

Appleton

North 922 Tower View Drive, Suite N
Greenville, WI 54942, USA

Boston

120 Presidential Way, Suite 330
Woburn, MA 01801, USA

Chicago

1441 East Business Center Drive
Mt. Prospect, IL 60056, USA

Dallas

1825 Lakeway Drive, Suite 600
Lewisville, TX 75057, USA

Detroit – Automotive Engineering Center

2601 Cambridge Court, Suite 320
Auburn Hills, MI 48326, USA

New York

395 Moreland Road
Hauppauge, NY 11788, USA

Silicon Valley

4935 Southfront Road, Suite F
Livermore, CA 94550, USA

United States



USA Headquarters, East: Festo Corp., 395 Moreland Road, Hauppauge, NY 11788

Phone: 1.631.435.0800; Fax: 1.631.435.8026;

Email: info@festo-usa.com

www.festo.com/us

Canada



Headquarters: Festo Inc., 5300 Explorer Drive, Mississauga, Ontario L4W 5G4

Phone: 1.905.624.9000; Fax: 1.905.624.9001;

Email: festo.canada@ca.festo.com

www.festo.ca

Mexico



Headquarters: Festo Pneumatic, S.A., Av. Ceylán 3, Col. Tequesquahuac,
54020 Tlalneapantla, Edo. de México

Phone: 011 52 [55] 53 21 66 00; Fax: 011 52 [55] 53 21 66 65;

Email: festo.mexico@mx.festo.com

www.festo.com/mx

Central USA

Festo Corporation
1441 East Business
Center Drive
Mt. Prospect, IL 60056, USA
Phone: 1.847.759.2600
Fax: 1.847.768.9480



Western USA

Festo Corporation
4935 Southfront Road,
Suite F
Livermore, CA 94550, USA
Phone: 1.925.371.1099
Fax: 1.925.245.1286



Festo Worldwide

Argentina Australia Austria Belarus Belgium Brazil Bulgaria Canada Chile China Colombia Croatia Czech Republic Denmark
Estonia Finland France Germany Great Britain Greece Hong Kong Hungary India Indonesia Iran Ireland Israel Italy Japan Latvia
Lithuania Malaysia Mexico Netherlands New Zealand Norway Peru Philippines Poland Romania Russia Serbia Singapore
Slovakia Slovenia South Africa South Korea Spain Sweden Switzerland Taiwan Thailand Turkey Ukraine United States Venezuela

www.festo.com