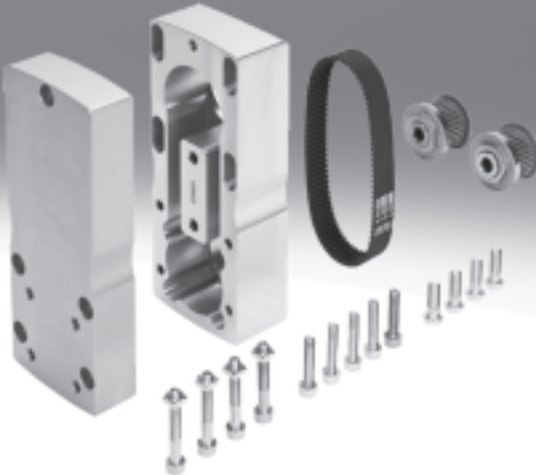


# Parallel kits EAMM-U

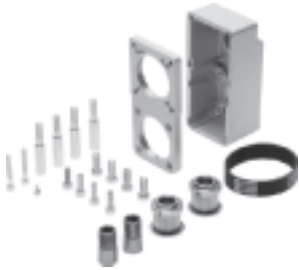


# Parallel kits EAMM-U

Key features

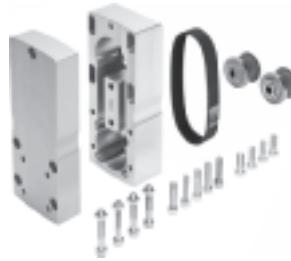
## At a glance

### Parallel kits EAMM-U



- Space-saving gravity die-cast housing

### Parallel kits EAMM-U



- Increased housing rigidity
- More flexible motor mounting possible
- Larger toothed belt bending radii for improved service life
- Optionally with protection to IP65
- Use in combination with third-party motors on request

### Counter bearing EAMG

The counter bearing cannot be used in combination with this parallel kit.

### Counter bearing EAMG

→ 21



A counter bearing EAMG reduces the load on the axis or motor bearings to improve the service life under high loads. A clamping sleeve EAMH is additionally required for each counter bearing.

### Clamping sleeve EAMH-...-P

The clamping sleeve cannot be used in combination with this parallel kit.

### Clamping sleeve EAMH-...-P

→ 21



To retrofit the counter bearing, the clamping sleeve without trunnion included as standard in the parallel kit must be replaced by the clamping sleeve EAMH-...-P with integrated trunnion. The appropriate clamping sleeve size for the counter bearing is determined by the size of the parallel kit.

### Clamping component EADT

The clamping component cannot be used in combination with this parallel kit.

### Clamping component EADT

→ 22



For adjusting the toothed belt pretension with EAMM-U-110 and EAMM-U-145. The motor is pushed away from the axis mechanism by turning the clamping component secured in a hole in the housing (the motor can be moved in a slot for this purpose). This enables high toothed belt pretension forces to be generated with low torques at the clamping component.

### Note

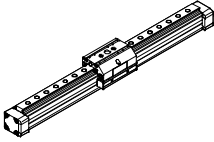
Depending on the combination of motor and drive, it may not be possible to reach the maximum feed force of the drive.

The respective no-load driving torque of the kit must be taken into consideration when using parallel kits.

# Parallel kits EAMM-U

Product range overview

## Permissible axis/motor combinations with spindle axis DGE-SP



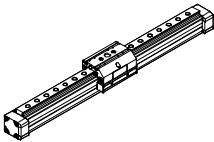
### Properties of the kits

- Space-saving gravity die-cast housing



Motor Type	Parallel kit	
Type	Part No.	Type
<b>DGE-25</b>		
With servo motor		
EMMS-AS-55-...	543230	EAMM-U-E32-55A
With motor unit		
MTR-DCI-42S-...-G07	543228	EAMM-U-E32-42B
MTR-DCI-42S-...-G14	543229	EAMM-U-E32-42C
<b>DGE-40</b>		
With servo motor		
EMMS-AS-70-...	543234	EAMM-U-E48-70A
With motor unit		
MTR-DCI-52S-...-G07	543232	EAMM-U-E48-52B
MTR-DCI-52S-...-G14	543233	EAMM-U-E48-52C

## Permissible axis/motor combinations with positioning axis DMES




### Properties of the kits

- Space-saving gravity die-cast housing



Motor Type	Parallel kit	
Type	Part No.	Type
<b>DMES-18</b>		
With servo motor		
EMMS-AS-40-...	543226	EAMM-U-E24-40A
With motor unit		
MTR-DCI-32S-...	543225	EAMM-U-E24-32B
<b>DMES-25</b>		
With servo motor		
EMMS-AS-55-...	543230	EAMM-U-E32-55A
With motor unit		
MTR-DCI-42S-...-G7	543228	EAMM-U-E32-42B
MTR-DCI-42S-...-G14	543229	EAMM-U-E32-42C
<b>DMES-40</b>		
With servo motor		
EMMS-AS-70-...	543234	EAMM-U-E48-70A
With motor unit		
MTR-DCI-52S-...-G7	543232	EAMM-U-E48-52B
MTR-DCI-52S-...-G14	543233	EAMM-U-E48-52C

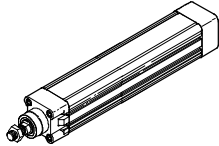
 Note  
At ambient temperatures below room temperature, the frictional torques increase in the case of the DMES-...-GF (plain-bearing guide).

# Parallel kits EAMM-U

Product range overview



## Permissible axis/motor combinations with electric cylinder DNCE



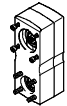
### Properties of the kits

- Space-saving gravity die-cast housing



### Properties of the kits

- Increased housing rigidity
- More flexible motor mounting possible
- Larger toothed belt bending radii for improved service life
- Use in combination with third-party motors on request



Motor	Parallel kit	
Type	Part No.	Type
<b>DNCE-32</b>		
With servo motor		
EMMS-AS-40-...	543150	EAMM-U-D32-40A
With motor unit		
MTR-DCI-32S-...	543152	EAMM-U-D32-32B
<b>DNCE-40</b>		
With servo motor		
EMMS-AS-55-...	543157	EAMM-U-D40-55A
With motor unit		
MTR-DCI-42S-...-G7	543159	EAMM-U-D40-42B
MTR-DCI-42S-...-G14	543160	EAMM-U-D40-42C
<b>DNCE-63</b>		
With servo motor		
EMMS-AS-70-...	543165	EAMM-U-D60-70A
With motor unit		
MTR-DCI-52S-...-G7	543167	EAMM-U-D60-52B
MTR-DCI-52S-...-G14	543168	EAMM-U-D60-52C

Motor/gear unit	Parallel kit	
Type	Part No.	Type
<b>DNCE-32</b>		
With servo motor		
EMMS-AS-40-...	1201591	EAMM-U-50-D32-40A-78
	1202302	EAMM-U-50-D32-40A-78-S1 <sup>1)</sup>
EMMS-AS-55-...	1210126	EAMM-U-60-D32-55A-91
	1210450	EAMM-U-60-D32-55A-91-S1 <sup>1)</sup>
With stepper motor		
EMMS-ST-42-...	1201607	EAMM-U-50-D32-42A-78
	1202312	EAMM-U-50-D32-42A-78-S1 <sup>1)</sup>
EMMS-ST-57-...	1210419	EAMM-U-60-D32-57A-91
	1210453	EAMM-U-60-D32-57A-91-S1 <sup>1)</sup>
With motor unit		
MTR-DCI-32S-...	1570862	EAMM-U-50-D32-32B-78
MTR-DCI-42S-...	1577393	EAMM-U-60-D32-42B/C-91
	1577380	EAMM-U-60-D32-42B/C-91-S1 <sup>1)</sup>
With gear unit <sup>2)</sup>		
EMGA-40-P-...	1577358	EAMM-U-60-D32-40G-91
	1577346	EAMM-U-60-D32-40G-91-S1 <sup>1)</sup>
<b>DNCE-40</b>		
With servo motor		
EMMS-AS-55-...	1210438	EAMM-U-60-D40-55A-91
	1210458	EAMM-U-60-D40-55A-91-S1 <sup>1)</sup>
EMMS-AS-70-...	1212826	EAMM-U-86-D40-70A-102
	1212854	EAMM-U-86-D40-70A-102-S1 <sup>1)</sup>
With stepper motor		
EMMS-ST-57-...	1210442	EAMM-U-60-D40-57A-91
	1210462	EAMM-U-60-D40-57A-91-S1 <sup>1)</sup>
EMMS-ST-87-...	1215802	EAMM-U-86-D40-87A-102
	1215814	EAMM-U-86-D40-87A-102-S1 <sup>1)</sup>
With motor unit		
MTR-DCI-42S-...	1570950	EAMM-U-60-D40-42B/C-91
	1430735	EAMM-U-60-D40-42B/C-91-S1 <sup>1)</sup>
MTR-DCI-52S-...	1537046	EAMM-U-86-D40-52B/C-102
	1537011	EAMM-U-86-D40-52B/C-102-S1 <sup>1)</sup>

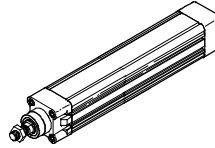
1) With protection class IP65.

2) The output torque at the gear unit output must be less than the transferable torque of the kit.

# Parallel kits EAMM-U

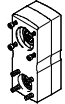
Product range overview

## Permissible axis/motor combinations with electric cylinder DNCE



### Properties of the kits

- Increased housing rigidity
- More flexible motor mounting possible
- Larger toothed belt bending radii for improved service life
- Use in combination with third-party motors on request



Motor/gear unit	Parallel kit	
Type	Part No.	Type
<b>DNCE-40</b>		
With gear unit <sup>2)</sup>		
EMGA-40-P-...	1577165	EAMM-U-60-D40-40G-91
	1435968	EAMM-U-60-D40-40G-91-S1 <sup>1)</sup>
EMGA-60-P-... <sup>3)</sup>	1586445	EAMM-U-86-D40-60G-102
	1586429	EAMM-U-86-D40-60G-102-S1 <sup>1)</sup>
EMGC-60-P-... <sup>3)</sup>	1586496	EAMM-U-86-D40-60H-102
	1586372	EAMM-U-86-D40-60H-102-S1 <sup>1)</sup>
<b>DNCE-63</b>		
With servo motor		
EMMS-AS-70-...	1212477	EAMM-U-86-D60-70A-102
	1212835	EAMM-U-86-D60-70A-102-S1 <sup>1)</sup>
EMMS-AS-100-...	1202436	EAMM-U-110-D60-100A-120
	1203112	EAMM-U-110-D60-100A-120-S1 <sup>1)</sup>
With stepper motor		
EMMS-ST-87-...	1215784	EAMM-U-86-D60-87A-102
	1215810	EAMM-U-86-D60-87A-102-S1 <sup>1)</sup>
With motor unit		
MTR-DCI-52S-...	1537000	EAMM-U-86-D60-52B/C-102
	1431381	EAMM-U-86-D60-52B/C-102-S1 <sup>1)</sup>
MTR-DCI-62S-...	1536988	EAMM-U-110-D60-62B-120
	1431443	EAMM-U-110-D60-62B-120-S1 <sup>1)</sup>
With gear unit <sup>2)</sup>		
EMGA-60-P-... <sup>3)</sup>	1586347	EAMM-U-86-D60-60G-102
	1437163	EAMM-U-86-D60-60G-102-S1 <sup>1)</sup>
EMGC-60-P-... <sup>3)</sup>	1586276	EAMM-U-86-D60-60H-102
	1530837	EAMM-U-86-D60-60H-102-S1 <sup>1)</sup>
EMGA-60-P-... <sup>3)</sup>	1543240	EAMM-U-110-D60-60G-120
	1436183	EAMM-U-110-D60-60G-120-S1 <sup>1)</sup>
EMGC-60-P-... <sup>3)</sup>	1542264	EAMM-U-110-D60-60H-120
	1530621	EAMM-U-110-D60-60H-120-S1 <sup>1)</sup>
EMGA-80-P-...	1532949	EAMM-U-110-D60-80G-120
	1530875	EAMM-U-110-D60-80G-120-S1 <sup>1)</sup>

1) With protection class IP65.

2) The output torque at the gear unit output must be less than the transferable torque of the kit.

3) Gear unit drive shaft  $\varnothing$ : EMGA-60: 11 mm, EMGC-60: 14 mm.



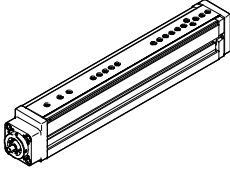
Note  
Clamping component EADT for adjusting the toothed belt pretension with EAMM-U-110 → 22

# Parallel kits EAMM-U

Product range overview

FESTO

## Permissible axis/motor combinations with mini slide EGSL



### Properties of the kits

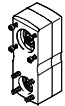
- Space-saving gravity die-cast housing



Motor	Parallel kit	
Type	Part No.	Type
<b>EGSL-45</b>		
With servo motor		
EMMS-AS-40-...	543150	EAMM-U-D32-40A
<b>EGSL-55</b>		
With servo motor		
EMMS-AS-55-...	543157	EAMM-U-D40-55A
<b>EGSL-75</b>		
With servo motor		
EMMS-AS-70-...	543165	EAMM-U-D60-70A

### Properties of the kits

- Increased housing rigidity
- More flexible motor mounting possible
- Larger toothed belt bending radii for improved service life
- Use in combination with third-party motors on request



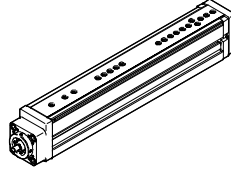
Motor/gear unit	Parallel kit	
Type	Part No.	Type
<b>EGSL-45</b>		
With servo motor		
EMMS-AS-40-...	1201591	EAMM-U-50-D32-40A-78
EMMS-AS-55-...	1210126	EAMM-U-60-D32-55A-91
With stepper motor		
EMMS-ST-42-...	1201607	EAMM-U-50-D32-42A-78
EMMS-ST-57-...	1210419	EAMM-U-60-D32-57A-91
With motor unit		
MTR-DCI-32S-...	1570862	EAMM-U-50-D32-32B-78
MTR-DCI-42S-...	1577393	EAMM-U-60-D32-42B/C-91
With gear unit <sup>1)</sup>		
EMGA-40-P-...	1577358	EAMM-U-60-D32-40G-91
<b>EGSL-55</b>		
With servo motor		
EMMS-AS-55-...	1210438	EAMM-U-60-D40-55A-91
EMMS-AS-70-...	1212826	EAMM-U-86-D40-70A-102
With stepper motor		
EMMS-ST-57-...	1210442	EAMM-U-60-D40-57A-91
EMMS-ST-87-...	1215802	EAMM-U-86-D40-87A-102
With motor unit		
MTR-DCI-42S-...	1570950	EAMM-U-60-D40-42B/C-91
MTR-DCI-52S-...	1537046	EAMM-U-86-D40-52B/C-102
With gear unit <sup>1)</sup>		
EMGA-40-P-...	1577165	EAMM-U-60-D40-40G-91
EMGA-60-P-... <sup>2)</sup>	1586445	EAMM-U-86-D40-60G-102
EMGC-60-P-... <sup>2)</sup>	1586496	EAMM-U-86-D40-60H-102

- 1) The output torque at the gear unit output must be less than the transferable torque of the kit.  
 2) Gear unit drive shaft  $\varnothing$ : EMGA-60: 11 mm, EMGC-60: 14 mm.

# Parallel kits EAMM-U

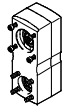
Product range overview

## Permissible axis/motor combinations with mini slide EGSL



### Properties of the kits

- Increased housing rigidity
- More flexible motor mounting possible
- Larger toothed belt bending radii for improved service life
- Use in combination with third-party motors on request



Motor/gear unit	Parallel kit	
Type	Part No.	Type
<b>EGSL-75</b>		
With servo motor		
EMMS-AS-70-...	1212477	EAMM-U-86-D60-70A-102
EMMS-AS-100-...	1202436	EAMM-U-110-D60-100A-120
With stepper motor		
EMMS-ST-87-...	1215784	EAMM-U-86-D60-87A-102
With motor unit		
MTR-DCI-52S-...	1537000	EAMM-U-86-D60-52B/C-102
MTR-DCI-62S-...	1536988	EAMM-U-110-D60-62B-120
With gear unit <sup>1)</sup>		
EMGA-60-P-... <sup>2)</sup>	1586347	EAMM-U-86-D60-60G-102
EMGC-60-P-... <sup>2)</sup>	1586276	EAMM-U-86-D60-60H-102
EMGA-60-P-... <sup>2)</sup>	1543240	EAMM-U-110-D60-60G-120
EMGC-60-P-... <sup>2)</sup>	1542264	EAMM-U-110-D60-60H-120
EMGA-80-P-...	1532949	EAMM-U-110-D60-80G-120

- 1) The output torque at the gear unit output must be less than the transferable torque of the kit.  
 2) Gear unit drive shaft  $\varnothing$ : EMGA-60: 11 mm, EMGC-60: 14 mm.



Note

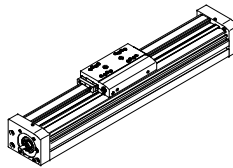
Clamping component EADT for adjusting the toothed belt pretension with EAMM-U-110 → 22

# Parallel kits EAMM-U

Product range overview

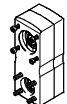


## Permissible axis/motor combinations with spindle axis EGC-BS



### Properties of the kits

- Increased housing rigidity
- More flexible motor mounting possible
- Larger toothed belt bending radii for improved service life
- Use in combination with third-party motors on request



Motor	Parallel kit	
Type	Part No.	Type
<b>EGC-70-...-BS</b>		
With servo motor		
EMMS-AS-40-...	1217708	EAMM-U-50-S38-40A-78
EMMS-AS-55-...	1218538	EAMM-U-60-S38-55A-91
With stepper motor		
EMMS-ST-42-...	1217945	EAMM-U-50-S38-42A-78
EMMS-ST-57-...	1218568	EAMM-U-60-S38-57A-91
<b>EGC-80-...-BS</b>		
With servo motor		
EMMS-AS-55-...	1219370	EAMM-U-60-S48-55A-91 <sup>1)</sup>
EMMS-AS-70-...	1217689	EAMM-U-86-S48-70A-102 <sup>1)</sup>
With stepper motor		
EMMS-ST-57-...	1219379	EAMM-U-60-S48-57A-91 <sup>1)</sup>
EMMS-ST-87-...	1217604	EAMM-U-86-S48-87A-177 <sup>1)</sup>
With gear unit <sup>2)</sup>		
EMGA-60-P-... <sup>3)</sup>	1587251	EAMM-U-86-S48-60G-102 <sup>1)</sup>
EMGC-60-P-... <sup>3)</sup>	1587338	EAMM-U-86-S48-60H-102 <sup>1)</sup>
<b>EGC-120-...-BS</b>		
With servo motor		
EMMS-AS-70-...	1217543	EAMM-U-86-S62-70A-177 <sup>1)</sup>
EMMS-AS-100-...	1217381	EAMM-U-110-S62-100A-207 <sup>1)</sup>
EMMS-AS-140-...	1219440	EAMM-U-145-S62-140A-288 <sup>1)</sup>
With stepper motor		
EMMS-ST-87-...	1217373	EAMM-U-86-S62-87A-177 <sup>1)</sup>
With gear unit <sup>2)</sup>		
EMGA-60-P-... <sup>3)</sup>	1587411	EAMM-U-86-S62-60G-177 <sup>1)</sup>
EMGC-60-P-... <sup>3)</sup>	1587453	EAMM-U-86-S62-60H-177 <sup>1)</sup>
<b>EGC-185-...-BS</b>		
With servo motor		
EMMS-AS-100-...	1220656	EAMM-U-110-S95-100A-207 <sup>1)</sup>
EMMS-AS-140-...	1220582	EAMM-U-145-S95-140A-288 <sup>1)</sup>
With gear unit <sup>2)</sup>		
EMGA-80-P-...	1589544	EAMM-U-110-S95-80G-207 <sup>1)</sup>

- 1) These parallel kits include a counter bearing EAMG for supporting the axis shaft.
- 2) The output torque at the gear unit output must be less than the transferable torque of the kit.
- 3) Gear unit drive shaft  $\varnothing$ : EMGA-60: 11 mm, EMGC-60: 14 mm.

-  - Note

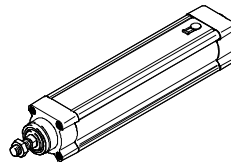
Clamping component EADT for adjusting the toothed belt pretension with EAMM-U-110 and EAMM-U-145 → 22



# Parallel kits EAMM-U

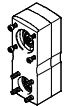
Product range overview

## Permissible axis/motor combinations with electric cylinder ESBF



### Properties of the kits

- Increased housing rigidity
- More flexible motor mounting possible
- Larger toothed belt bending radii for improved service life
- Use in combination with third-party motors on request



Motor	Parallel kit	
Type	Part No.	Type
<b>ESBF-63</b>		
With servo motor		
EMMS-AS-70-...	1212477	EAMM-U-86-D60-70A-102
	1212835	EAMM-U-86-D60-70A-102-S1 <sup>1)</sup>
EMMS-AS-100-...	1202436	EAMM-U-110-D60-100A-120
	1203112	EAMM-U-110-D60-100A-120-S1 <sup>1)</sup>
With gear unit <sup>2)</sup>		
EMGA-60-P-... <sup>3)</sup>	1586347	EAMM-U-86-D60-60G-102
	1437163	EAMM-U-86-D60-60G-102-S1 <sup>1)</sup>
EMGC-60-P-... <sup>3)</sup>	1586276	EAMM-U-86-D60-60H-102
	1530837	EAMM-U-86-D60-60H-102-S1 <sup>1)</sup>
EMGA-60-P-... <sup>3)</sup>	1543240	EAMM-U-110-D60-60G-120
	1436183	EAMM-U-110-D60-60G-120-S1 <sup>1)</sup>
EMGC-60-P-... <sup>3)</sup>	1542264	EAMM-U-110-D60-60H-120
	1530621	EAMM-U-110-D60-60H-120-S1 <sup>1)</sup>
EMGA-80-P-...	1532949	EAMM-U-110-D60-80G-120
	1530875	EAMM-U-110-D60-80G-120-S1 <sup>1)</sup>
<b>ESBF-80</b>		
With servo motor		
EMMS-AS-100-...	1465438	EAMM-U-110-D80-100A-120
	1433650	EAMM-U-110-D80-100A-120-S1 <sup>1)</sup>
EMMS-AS-140-...	1465530	EAMM-U-145-D80-140A-188
	1433709	EAMM-U-145-D80-140A-188-S1 <sup>1)</sup>
With gear unit <sup>2)</sup>		
EMGA-80-P-...	1589614	EAMM-U-110-D80-80G-120
	1589706	EAMM-U-110-D80-80G-120-S1 <sup>1)</sup>
<b>ESBF-100</b>		
With servo motor		
EMMS-AS-140-...	1465541	EAMM-U-145-D100-140A-188
	1433852	EAMM-U-145-D100-140A-188-S1 <sup>1)</sup>

1) With protection class IP65.

2) The output torque at the gear unit output must be less than the transferable torque of the kit.

3) Gear unit drive shaft  $\varnothing$ : EMGA-60: 11 mm, EMGC-60: 14 mm.

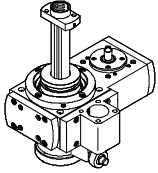


Clamping component EADT for adjusting the toothed belt pretension with EAMM-U-110 and EAMM-U-145 → 22

# Parallel kits EAMM-U

Product range overview

## Permissible axis/motor combinations with rotary/lifting module EHMB for linear motion



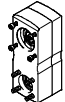
### Properties of the kits

- Space-saving gravity die-cast housing



### Properties of the kits

- Increased housing rigidity
- More flexible motor mounting possible
- Larger toothed belt bending radii for improved service life
- Use in combination with third-party motors on request



Motor	Parallel kit	
Type	Part No.	Type
<b>EHMB-20/-25 with DNCE-32 for linear motion</b>		
With servo motor		
EMMS-AS-40-...	543150	EAMM-U-D32-40A
With motor unit		
MTR-DCI-32S-...	543152	EAMM-U-D32-32B
<b>EHMB-32 with DNCE-40 for linear motion</b>		
With servo motor		
EMMS-AS-55-...	543157	EAMM-U-D40-55A
With motor unit		
MTR-DCI-42S-...-G7	543159	EAMM-U-D40-42B
MTR-DCI-42S-...-G14	543160	EAMM-U-D40-42C

Motor	Parallel kit	
Type	Part No.	Type
<b>EHMB-20/-25 with DNCE-32 for linear motion</b>		
With servo motor		
EMMS-AS-40-...	1201591	EAMM-U-50-D32-40A-78 <sup>1)</sup>
EMMS-AS-55-...	1210126	EAMM-U-60-D32-55A-91 <sup>2)</sup>
With stepper motor		
EMMS-ST-42-...	1201607	EAMM-U-50-D32-42A-78 <sup>1)</sup>
EMMS-ST-57-...	1210419	EAMM-U-60-D32-57A-91 <sup>2)</sup>
With motor unit		
MTR-DCI-32S-...	1570862	EAMM-U-50-D32-32B-78 <sup>1)</sup>
MTR-DCI-42S-...	1577393	EAMM-U-60-D32-42B/C-91 <sup>2)</sup>
<b>EHMB-32 with DNCE-40 for linear motion</b>		
With servo motor		
EMMS-AS-55-...	1210438	EAMM-U-60-D40-55A-91
EMMS-AS-70-...	1212826	EAMM-U-86-D40-70A-102 <sup>1)</sup>
With stepper motor		
EMMS-ST-57-...	1210442	EAMM-U-60-D40-57A-91
EMMS-ST-87-...	1215802	EAMM-U-86-D40-87A-102 <sup>1)</sup>
With motor unit		
MTR-DCI-42S-...	1570950	EAMM-U-60-D40-42B/C-91
MTR-DCI-52S-...	1537046	EAMM-U-86-D40-52B/C-102 <sup>1)</sup>

- The parallel kit cannot be operated in combination with the cover EASC-H1 in all attachment positions.
- The parallel kit cannot be operated in combination with the cover EASC-H1.

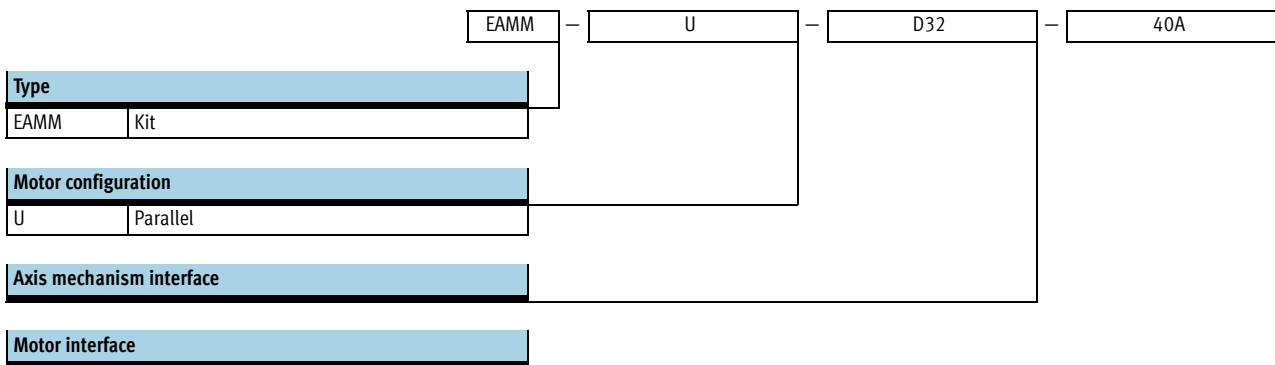
# Parallel kits EAMM-U

Type codes

## Properties of the kits



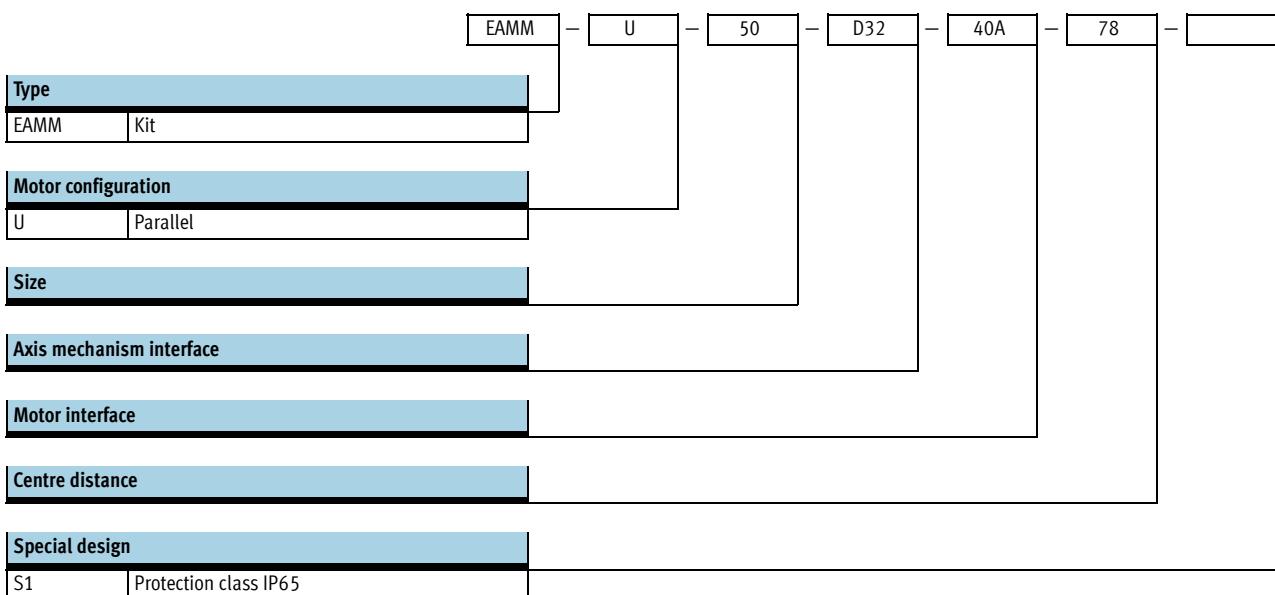
- Space-saving gravity die-cast housing



## Properties of the kits



- Increased housing rigidity
- More flexible motor mounting possible
- Larger toothed belt bending radii for improved service life
- Optionally with protection to IP65
- Use in combination with third-party motors on request



# Parallel kits EAMM-U

Technical data



**Properties:**

- Space-saving gravity die-cast housing

**Materials:**

Housing: Gravity die-cast aluminium  
 Clamping component, clamping sleeve, toothed belt pulley: Corrosion-resistant steel  
 Toothed belt: Polychloroprene  
 Screws: Galvanised steel



General technical data								
Type	For axis	Transferable torque [Nm]	Mass moment of inertia [kgmm <sup>2</sup> ]	Max. rotational speed [rpm]	No-load driving torque [Nm]	Weight [g]	Protection class <sup>1)</sup>	→ Page
EAMM-U-D32-32B	DNCE	1	2.93	6,000	0.05	300	IP40	16
EAMM-U-D32-40A	DNCE, EGSL	1	2.93	6,000	0.05	300	IP40	
EAMM-U-D40-42B	DNCE	3	10.0	5,000	0.1	660	IP40	
EAMM-U-D40-42C	DNCE	3	10.0	5,000	0.1	690	IP40	
EAMM-U-D40-55A	DNCE, EGSL	3	10.0	5,000	0.1	530	IP40	
EAMM-U-D60-52B	DNCE	5.5	70.5	4,000	0.3	1,530	IP40	
EAMM-U-D60-52C	DNCE	5.5	70.5	4,000	0.3	1,630	IP40	
EAMM-U-D60-70A	DNCE, EGSL	5.5	70.5	4,000	0.3	1,170	IP40	
EAMM-U-E24-32B	DMES	1	3.02	3,000	0.05	240	IP40	15
EAMM-U-E24-40A	DMES	1	3.02	3,000	0.05	240	IP40	
EAMM-U-E32-42B	DGE-SP, DMES	3	10.2	3,000	0.1	660	IP40	
EAMM-U-E32-42C	DGE-SP, DMES	3	10.2	3,000	0.1	690	IP40	
EAMM-U-E32-55A	DGE-SP, DMES	3	10.2	3,000	0.1	540	IP40	
EAMM-U-E48-52B	DGE-SP, DMES	5.5	71.1	3,000	0.3	1,700	IP40	
EAMM-U-E48-52C	DGE-SP, DMES	5.5	71.1	3,000	0.3	1,800	IP40	
EAMM-U-E48-70A	DGE-SP, DMES	5.5	71.1	3,000	0.3	1,300	IP40	

1) Only in combination with attached motor and axis.

Operating and environmental conditions		
Ambient temperature	[°C]	0 ... +50
Storage temperature	[°C]	-25 ... +60
Relative air humidity	[%]	0 ... 95
Corrosion resistance class CRC <sup>2)</sup>		1
Note on materials		Contains PWIS (paint-wetting impairment substances)
		Conforms to RoHS

2) Corrosion resistance class 1 according to Festo standard 940 070  
 Components subject to low corrosion stress. Transport and storage protection. Parts that do not have primarily decorative surface requirements, e.g. in internal areas that are not visible or behind covers.

# Parallel kits EAMM-U

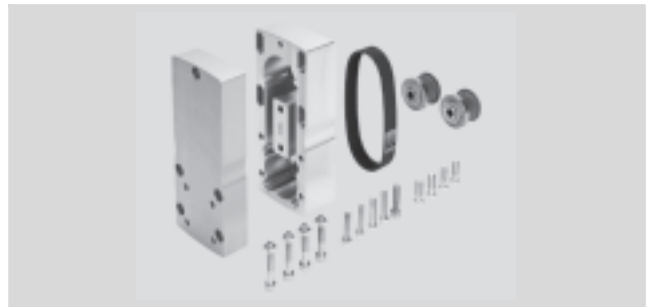
Technical data

**Properties:**

- Increased housing rigidity
- More flexible motor mounting possible
- Larger toothed belt bending radii for improved service life
- Optionally with protection to IP65
- Use in combination with third-party motors on request

**Materials:**

- Housing: Wrought aluminium alloy  
 Clamping sleeve, toothed belt pulley: Corrosion-resistant steel  
 Toothed belt: Polychloroprene  
 Screws: Galvanised steel



General technical data								
Type	For axis	Transferable torque [Nm]	Mass moment of inertia [kgmm <sup>2</sup> ]	Max. rotational speed [rpm]	No-load driving torque [Nm]	Weight [g]	Protection class <sup>1)</sup>	→ Page
EAMM-U-50-D32-32B-78	DNCE, EGSL	1	12.1	6,000	0.01	608	IP40	17
EAMM-U-50-D32-40A-78	DNCE, EGSL	1	12.1	6,000	0.01	600	IP40	
EAMM-U-50-D32-40A-78-S1	DNCE, EGSL	1	12.1	6,000	0.01	620	IP65	
EAMM-U-50-D32-42A-78	DNCE, EGSL	1	12.1	6,000	0.01	610	IP40	
EAMM-U-50-D32-42A-78-S1	DNCE, EGSL	1	12.1	6,000	0.01	630	IP65	
EAMM-U-50-S38-40A-78	EGC-BS	1	12.1	6,000	0.01	580	IP40	19
EAMM-U-50-S38-42A-78	EGC-BS	1	12.1	6,000	0.01	590	IP40	
EAMM-U-60-D32-40G-91	DNCE, EGSL	3	26.7	6,000	0.07	1,100	IP40	17
EAMM-U-60-D32-40G-91-S1	DNCE, EGSL	3	26.7	6,000	0.07	1,140	IP65	
EAMM-U-60-D32-42B/C-91	DNCE, EGSL	3	26.7	6,000	0.07	1,100	IP40	
EAMM-U-60-D32-42B/C-91-S1	DNCE, EGSL	3	26.7	6,000	0.07	1,140	IP65	
EAMM-U-60-D32-55A-91	DNCE, EGSL	3	26.7	6,000	0.07	1,050	IP40	
EAMM-U-60-D32-55A-91-S1	DNCE, EGSL	3	26.7	6,000	0.07	1,100	IP65	
EAMM-U-60-D32-57A-91	DNCE, EGSL	3	26.7	6,000	0.07	1,160	IP40	
EAMM-U-60-D32-57A-91-S1	DNCE, EGSL	3	26.7	6,000	0.07	1,190	IP65	
EAMM-U-60-D40-40G-91	DNCE, EGSL	3	26.7	6,000	0.07	1,080	IP40	
EAMM-U-60-D40-40G-91-S1	DNCE, EGSL	3	26.7	6,000	0.07	1,130	IP65	
EAMM-U-60-D40-42B/C-91	DNCE, EGSL	3	26.7	6,000	0.07	1,080	IP40	
EAMM-U-60-D40-42B/C-91-S1	DNCE, EGSL	3	26.7	6,000	0.07	1,130	IP65	
EAMM-U-60-D40-55A-91	DNCE, EGSL	3	26.7	6,000	0.07	1,040	IP40	
EAMM-U-60-D40-55A-91-S1	DNCE, EGSL	3	26.7	6,000	0.07	1,080	IP65	
EAMM-U-60-D40-57A-91	DNCE, EGSL	3	26.7	6,000	0.07	1,140	IP40	
EAMM-U-60-D40-57A-91-S1	DNCE, EGSL	3	26.7	6,000	0.07	1,170	IP65	
EAMM-U-60-S38-55A-91	EGC-BS	3	26.7	6,000	0.07	990	IP40	
EAMM-U-60-S38-57A-91	EGC-BS	3	26.7	6,000	0.07	1,090	IP40	
EAMM-U-60-S48-55A-91	EGC-BS	3	26.7	6,000	0.07	1,060	IP40	
EAMM-U-60-S48-57A-91	EGC-BS	3	26.7	6,000	0.07	1,160	IP40	
EAMM-U-86-D40-52B/C-102	DNCE, EGSL	9.5	175	5,000	0.25	2,520	IP40	17
EAMM-U-86-D40-52B/C-102-S1	DNCE, EGSL	9.5	175	5,000	0.25	2,540	IP65	
EAMM-U-86-D40-60G-102	DNCE, EGSL	9.5	175	5,000	0.25	2,480	IP40	
EAMM-U-86-D40-60G-102-S1	DNCE, EGSL	9.5	175	5,000	0.25	2,500	IP65	
EAMM-U-86-D40-60H-102	DNCE, EGSL	9.5	175	5,000	0.25	2,480	IP40	
EAMM-U-86-D40-60H-102-S1	DNCE, EGSL	9.5	175	5,000	0.25	2,500	IP65	
EAMM-U-86-D40-70A-102	DNCE, EGSL	9.5	175	5,000	0.25	2,450	IP40	
EAMM-U-86-D40-70A-102-S1	DNCE, EGSL	9.5	175	5,000	0.25	2,460	IP65	
EAMM-U-86-D40-87A-102	DNCE, EGSL	9.5	175	5,000	0.25	2,510	IP40	
EAMM-U-86-D40-87A-102-S1	DNCE, EGSL	9.5	175	5,000	0.25	2,530	IP65	

1) Only in combination with attached motor and axis.

# Parallel kits EAMM-U

Technical data

FESTO

General technical data								
Type	For axis	Transferable torque [Nm]	Mass moment of inertia [kgmm <sup>2</sup> ]	Max. rotational speed [rpm]	No-load driving torque [Nm]	Weight [g]	Protection class <sup>1)</sup>	→ Page
EAMM-U-86-D60-52B/C-102	DNCE, EGSL, ESBF	9.5	175	5,000	0.25	2,520	IP40	17
EAMM-U-86-D60-52B/C-102-S1	DNCE, EGSL, ESBF	9.5	175	5,000	0.25	2,540	IP65	
EAMM-U-86-D60-60G-102	DNCE, EGSL, ESBF	9.5	175	5,000	0.25	2,480	IP40	
EAMM-U-86-D60-60G-102-S1	DNCE, EGSL, ESBF	9.5	175	5,000	0.25	2,500	IP65	
EAMM-U-86-D60-60H-102	DNCE, EGSL, ESBF	9.5	175	5,000	0.25	2,480	IP40	
EAMM-U-86-D60-60H-102-S1	DNCE, EGSL, ESBF	9.5	175	5,000	0.25	2,500	IP65	
EAMM-U-86-D60-70A-102	DNCE, EGSL, ESBF	9.5	175	5,000	0.25	2,440	IP40	
EAMM-U-86-D60-70A-102-S1	DNCE, EGSL, ESBF	9.5	175	5,000	0.25	2,460	IP65	
EAMM-U-86-D60-87A-102	DNCE, EGSL, ESBF	9.5	175	5,000	0.25	2,510	IP40	
EAMM-U-86-D60-87A-102-S1	DNCE, EGSL, ESBF	9.5	175	5,000	0.25	2,520	IP65	
EAMM-U-86-S48-60G-102	EGC-BS	9.5	175	5,000	0.25	2,480	IP40	19
EAMM-U-86-S48-70A-102	EGC-BS	9.5	175	5,000	0.25	2,440	IP40	
EAMM-U-86-S48-87A-177	EGC-BS	9.5	175	5,000	0.25	3,270	IP40	
EAMM-U-86-S62-60G-177	EGC-BS	9.5	175	5,000	0.25	3,300	IP40	
EAMM-U-86-S62-60H-177	EGC-BS	9.5	175	5,000	0.25	3,300	IP40	
EAMM-U-86-S62-70A-177	EGC-BS	9.5	175	5,000	0.25	3,270	IP40	
EAMM-U-86-S62-87A-177	EGC-BS	9.5	175	5,000	0.25	3,330	IP40	
EAMM-U-110-D60-60G-120	DNCE, EGSL, ESBF	25	799	5,000	0.3	4,950	IP40	17, 20
EAMM-U-110-D60-60G-120-S1	DNCE, EGSL, ESBF	25	799	5,000	0.3	5,020	IP65	
EAMM-U-110-D60-60H-120	DNCE, EGSL, ESBF	25	799	5,000	0.3	4,950	IP40	
EAMM-U-110-D60-60H-120-S1	DNCE, EGSL, ESBF	25	799	5,000	0.3	5,020	IP65	
EAMM-U-110-D60-62B-120	DNCE, EGSL, ESBF	25	799	5,000	0.3	5,230	IP40	
EAMM-U-110-D60-62B-120-S1	DNCE, EGSL, ESBF	25	799	5,000	0.3	5,270	IP65	
EAMM-U-110-D60-80G-120	DNCE, EGSL, ESBF	25	799	5,000	0.3	5,120	IP40	
EAMM-U-110-D60-80G-120-S1	DNCE, EGSL, ESBF	25	799	5,000	0.3	5,180	IP65	
EAMM-U-110-D60-100A-120	DNCE, EGSL, ESBF	25	799	5,000	0.3	4,950	IP40	
EAMM-U-110-D60-100A-120-S1	DNCE, EGSL, ESBF	25	799	5,000	0.3	5,020	IP65	
EAMM-U-110-D80-80G-120	ESBF	25	799	5,000	0.3	5,240	IP40	20
EAMM-U-110-D80-80G-120-S1	ESBF	25	799	5,000	0.3	5,310	IP65	
EAMM-U-110-D80-100A-120	ESBF	25	799	5,000	0.3	5,070	IP40	
EAMM-U-110-D80-100A-120-S1	ESBF	25	799	5,000	0.3	5,140	IP65	
EAMM-U-110-S62-100A-207	EGC-BS	25	799	5,000	0.3	6,900	IP40	19
EAMM-U-110-S95-100A-207	EGC-BS	25	799	5,000	0.3	6,810	IP40	
EAMM-U-110-S95-80G-207	EGC-BS	25	799	5,000	0.3	6,940	IP40	
EAMM-U-145-D80-140A-188	ESBF	50	2,270	4,000	2.0	11,900	IP40	20
EAMM-U-145-D80-140A-188-S1	ESBF	50	2,270	4,000	2.0	12,100	IP65	
EAMM-U-145-D100-140A-188	ESBF	50	2,270	4,000	2.0	11,800	IP40	
EAMM-U-145-D100-140A-188-S1	ESBF	50	2,270	4,000	2.0	11,900	IP65	
EAMM-U-145-S62-140A-288	EGC-BS	50	2,270	4,000	2.0	15,030	IP40	19
EAMM-U-145-S95-140A-288	EGC-BS	50	2,270	4,000	2.0	14,850	IP40	

1) Only in combination with attached motor and axis.

Operating and environmental conditions		
Ambient temperature	[°C]	-10 ... +60
Storage temperature	[°C]	-25 ... +60
Relative air humidity	[%]	0 ... 95
Corrosion resistance class CRC <sup>2)</sup>		2
Note on materials		Conforms to RoHS

2) Corrosion resistance class 2 according to Festo standard 940 070  
Components subject to moderate corrosion stress. Externally visible parts with primarily decorative surface requirements which are in direct contact with a normal industrial environment or media such as coolants or lubricating agents.

# Parallel kits EAMM-U

Technical data

## Dimensions and ordering data

Download CAD data → [www.festo.com](http://www.festo.com)

DGE-SP-...

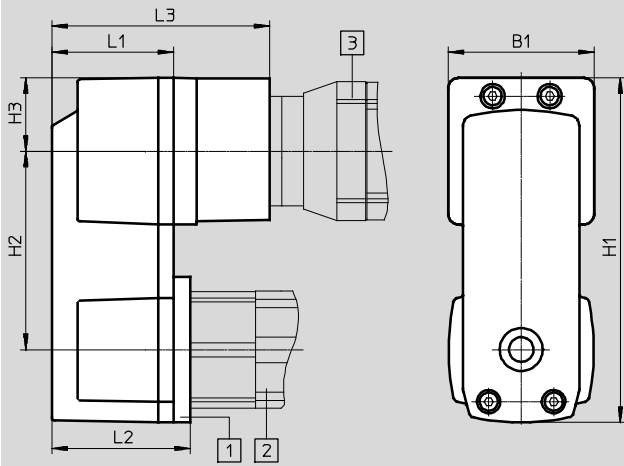


Illustration:

- 1 Parallel kit
- 2 Spindle axis
- 3 Motor

DMES-...

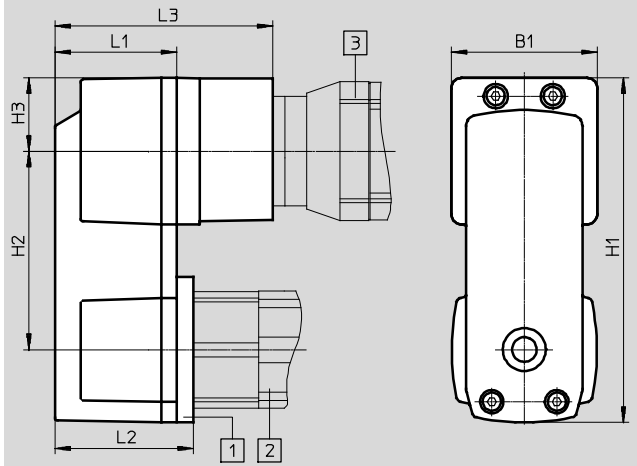


Illustration:

- 1 Parallel kit
- 2 Positioning axis
- 3 Motor

Type	B1	H1	H2	H3	L1	L2	L3	Part No.	Type
EAMM-U-E24-32B <sup>1)</sup>	43.3	110.05	69 <sub>-0.1</sub>	21.7	39	-	-	543225	EAMM-U-E24-32B
EAMM-U-E24-40A <sup>1)</sup>								543226	EAMM-U-E24-40A
EAMM-U-E32-42B	56.4	132.7	76.5 <sub>-0.1</sub>	28.2	47	53.5	84	543228	EAMM-U-E32-42B
EAMM-U-E32-42C							97	543229	EAMM-U-E32-42C
EAMM-U-E32-55A							-	543230	EAMM-U-E32-55A
EAMM-U-E48-52B	85.8	189.9	107.5 <sub>-0.2</sub>	42.9	58	66.5	106	543232	EAMM-U-E48-52B
EAMM-U-E48-52C							120	543233	EAMM-U-E48-52C
EAMM-U-E48-70A							-	543234	EAMM-U-E48-70A

1) Only in combination with DMES-...

# Parallel kits EAMM-U

Technical data

FESTO

**Dimensions and ordering data**

Download CAD data → [www.festo.com](http://www.festo.com)

EGSL-...

Illustration:

- 1 Parallel kit
- 2 Mini slide
- 3 Motor

- - Note

The motor can only be mounted on the side and underneath.

DNCE-...

Illustration:

- 1 Parallel kit
- 2 Electric cylinder
- 3 Motor

Type	B1	H1	H2 ±0.1	H3	L1	L2	L3	Part No.	Type
EAMM-U-D32-32B <sup>1)</sup>	45.1	93.1	48	22.6	40	4	-	543152	EAMM-U-D32-32B
EAMM-U-D32-40A								543150	EAMM-U-D32-40A
EAMM-U-D40-42B <sup>1)</sup>	56.5	115	60	28.2	47	4	84	543159	EAMM-U-D40-42B
EAMM-U-D40-42C <sup>1)</sup>							97	543160	EAMM-U-D40-42C
EAMM-U-D40-55A							-	543157	EAMM-U-D40-55A
EAMM-U-D60-52B <sup>1)</sup>	86	162.6	82.5	42.9	58	4	106	543167	EAMM-U-D60-52B
EAMM-U-D60-52C <sup>1)</sup>							120	543168	EAMM-U-D60-52C
EAMM-U-D60-70A							-	543165	EAMM-U-D60-70A

1) Only in combination with DNCE-...



# Parallel kits EAMM-U

Technical data

**Dimensions and ordering data**

EGSL-...

Illustration:  
 1 Parallel kit  
 2 Mini slide  
 3 Motor  
 4 Interface for mounting accessories

DNCE-...

Illustration:  
 1 Parallel kit  
 2 Electric cylinder  
 3 Motor  
 4 Interface for mounting accessories

Download CAD data → [www.festo.com](http://www.festo.com)

Type	B1	B2	D1	H1	H2 ±1	H3	H4	L1	T1 +0.2	Part No.	Type									
EAMM-U-50-D32-32B-78	50	32.5	M6	128.8	78	22.8	32.5	45	15	1570862	EAMM-U-50-D32-32B-78									
EAMM-U-50-D32-40A-78										1201591	EAMM-U-50-D32-40A-78									
EAMM-U-50-D32-40A-78-S1										1202302	EAMM-U-50-D32-40A-78-S1									
EAMM-U-50-D32-42A-78										1201607	EAMM-U-50-D32-42A-78									
EAMM-U-50-D32-42A-78-S1										1202312	EAMM-U-50-D32-42A-78-S1									
EAMM-U-60-D32-40G-91	60	32.5	M6	157	91.5	27.5	32.5	56	15	1577358	EAMM-U-60-D32-40G-91									
EAMM-U-60-D32-40G-91-S1										1577346	EAMM-U-60-D32-40G-91-S1									
EAMM-U-60-D32-42B/C-91										1577393	EAMM-U-60-D32-42B/C-91									
EAMM-U-60-D32-42B/C-91-S1										1577380	EAMM-U-60-D32-42B/C-91-S1									
EAMM-U-60-D32-55A-91										1210126	EAMM-U-60-D32-55A-91									
EAMM-U-60-D32-55A-91-S1		1210450	EAMM-U-60-D32-55A-91-S1																	
EAMM-U-60-D32-57A-91		1210419	EAMM-U-60-D32-57A-91																	
EAMM-U-60-D32-57A-91-S1		1210453	EAMM-U-60-D32-57A-91-S1																	
EAMM-U-60-D40-40G-91		38									1577165	EAMM-U-60-D40-40G-91								
EAMM-U-60-D40-40G-91-S1											1435968	EAMM-U-60-D40-40G-91-S1								
EAMM-U-60-D40-42B/C-91											1570950	EAMM-U-60-D40-42B/C-91								
EAMM-U-60-D40-42B/C-91-S1											1430735	EAMM-U-60-D40-42B/C-91-S1								
EAMM-U-60-D40-55A-91											1210438	EAMM-U-60-D40-55A-91								
EAMM-U-60-D40-55A-91-S1											1210458	EAMM-U-60-D40-55A-91-S1								
EAMM-U-60-D40-57A-91											1210442	EAMM-U-60-D40-57A-91								
EAMM-U-60-D40-57A-91-S1	1210462										EAMM-U-60-D40-57A-91-S1									
EAMM-U-86-D40-52B/C-102	86										38	M6	188.5	102.5	38	38	69	16	1537046	EAMM-U-86-D40-52B/C-102
EAMM-U-86-D40-52B/C-102-S1																			1537011	EAMM-U-86-D40-52B/C-102-S1
EAMM-U-86-D40-60G-102		1586445	EAMM-U-86-D40-60G-102																	
EAMM-U-86-D40-60G-102-S1		1586429	EAMM-U-86-D40-60G-102-S1																	
EAMM-U-86-D40-60H-102		1586496	EAMM-U-86-D40-60H-102																	
EAMM-U-86-D40-60H-102-S1		1586372	EAMM-U-86-D40-60H-102-S1																	
EAMM-U-86-D40-70A-102		1212826	EAMM-U-86-D40-70A-102																	
EAMM-U-86-D40-70A-102-S1		1212854	EAMM-U-86-D40-70A-102-S1																	
EAMM-U-86-D40-87A-102		1215802	EAMM-U-86-D40-87A-102																	
EAMM-U-86-D40-87A-102-S1		1215814	EAMM-U-86-D40-87A-102-S1																	

# Parallel kits EAMM-U

Technical data



Dimensions and ordering data Download CAD data → [www.festo.com](http://www.festo.com)

EGSL-...

Illustration:

- 1 Parallel kit
- 2 Mini slide
- 3 Motor
- 4 Interface for mounting accessories

DNCE-...

Illustration:

- 1 Parallel kit
- 2 Electric cylinder
- 3 Motor
- 4 Interface for mounting accessories

Type	B1	B2	D1	H1	H2 ±1	H3	H4	L1	T1 +0,2	Part No.	Type
EAMM-U-86-D60-52B/C-102	86	56.5	M8	188.5	102.5	38	56.5	71	16	1537000	EAMM-U-86-D60-52B/C-102
EAMM-U-86-D60-52B/C-102-S1										1431381	EAMM-U-86-D60-52B/C-102-S1
EAMM-U-86-D60-60G-102										1586347	EAMM-U-86-D60-60G-102
EAMM-U-86-D60-60G-102-S1										1437163	EAMM-U-86-D60-60G-102-S1
EAMM-U-86-D60-60H-102										1586276	EAMM-U-86-D60-60H-102
EAMM-U-86-D60-60H-102-S1										1530837	EAMM-U-86-D60-60H-102-S1
EAMM-U-86-D60-70A-102										1212477	EAMM-U-86-D60-70A-102
EAMM-U-86-D60-70A-102-S1										1212835	EAMM-U-86-D60-70A-102-S1
EAMM-U-86-D60-87A-102										1215784	EAMM-U-86-D60-87A-102
EAMM-U-86-D60-87A-102-S1										1215810	EAMM-U-86-D60-87A-102-S1
EAMM-U-110-D60-60G-120	110	56.5	M8	225	120	45	56.5	82	16	1543240	EAMM-U-110-D60-60G-120
EAMM-U-110-D60-60G-120-S1										1436183	EAMM-U-110-D60-60G-120-S1
EAMM-U-110-D60-60H-120										1542264	EAMM-U-110-D60-60H-120
EAMM-U-110-D60-60H-120-S1										1530621	EAMM-U-110-D60-60H-120-S1
EAMM-U-110-D60-62B-120										1536988	EAMM-U-110-D60-62B-120
EAMM-U-110-D60-62B-120-S1										1431443	EAMM-U-110-D60-62B-120-S1
EAMM-U-110-D60-80G-120										1532949	EAMM-U-110-D60-80G-120
EAMM-U-110-D60-80G-120-S1										1530875	EAMM-U-110-D60-80G-120-S1
EAMM-U-110-D60-100A-120										1202436	EAMM-U-110-D60-100A-120
EAMM-U-110-D60-100A-120-S1										1203112	EAMM-U-110-D60-100A-120-S1

# Parallel kits EAMM-U

Technical data

FESTO

## Dimensions and ordering data

Download CAD data → [www.festo.com](http://www.festo.com)

EGC-...-BS-...

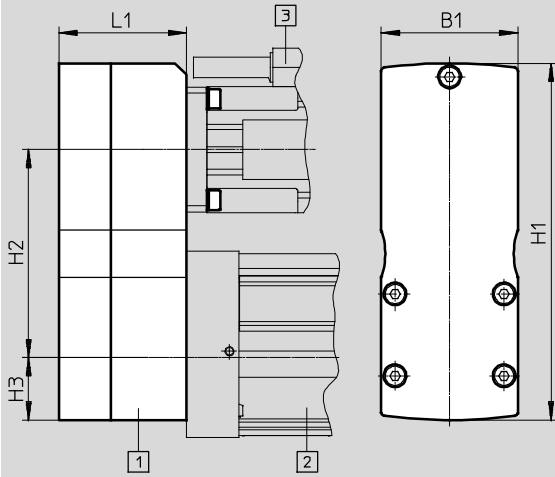


Illustration:

- 1 Parallel kit
- 2 Spindle axis
- 3 Motor

Type	B1	H1	H2 ±1	H3	L1	Part No.	Type
EAMM-U-50-S38-40A-78	50	131	78	25	43	1217708	EAMM-U-50-S38-40A-78
1217945						EAMM-U-50-S38-42A-78	
EAMM-U-60-S38-55A-91	60	157	91.5	27.5	53	1218538	EAMM-U-60-S38-55A-91
1218568						EAMM-U-60-S38-57A-91	
EAMM-U-60-S48-55A-91	60	161.5	91.5	32	54	1219370	EAMM-U-60-S48-55A-91
1219379						EAMM-U-60-S48-57A-91	
EAMM-U-60-S48-60G-102	86	188.5	102.5	38	67	1587251	EAMM-U-60-S48-60G-102
EAMM-U-60-S48-60H-102						1587338	EAMM-U-60-S48-60H-102
EAMM-U-86-S48-70A-102						1217689	EAMM-U-86-S48-70A-102
EAMM-U-86-S48-87A-177	86	268.5	177.5	43	67	1217604	EAMM-U-86-S48-87A-177
EAMM-U-86-S62-60G-177						69	1587411
EAMM-U-86-S62-60H-177					1587453		EAMM-U-86-S62-60H-177
EAMM-U-86-S62-70A-177					69	1217543	EAMM-U-86-S62-70A-177
EAMM-U-86-S62-87A-177						1217373	EAMM-U-86-S62-87A-177
EAMM-U-110-S62-100A-207					110	322.5	207.5
EAMM-U-110-S95-80G-207	1589544	EAMM-U-110-S95-80G-207					
EAMM-U-110-S95-100A-207	1220656	EAMM-U-110-S95-100A-207					
EAMM-U-145-S62-140A-288	145	448	288	70	99.5	1219440	EAMM-U-145-S62-140A-288
EAMM-U-145-S95-140A-288						1220582	EAMM-U-145-S95-140A-288

# Parallel kits EAMM-U

Technical data

FESTO

## Dimensions and ordering data

Download CAD data → [www.festo.com](http://www.festo.com)

ESBF-BS-...

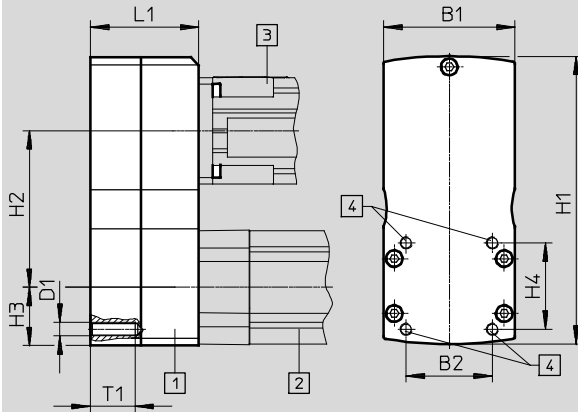


Illustration:

- 1 Parallel kit
- 2 Electric cylinder
- 3 Motor
- 4 Interface for mounting accessories

Type	B1	B2	D1	H1	H2 ±1	H3	H4	L1	T1	Part No.	Type				
EAMM-U-86-D60-52B/C-102	86	56.5	M8	188.5	102.5	38	56.5	71	16	1537000	EAMM-U-86-D60-52B/C-102				
EAMM-U-86-D60-52B/C-102-S1										1431381	EAMM-U-86-D60-52B/C-102-S1				
EAMM-U-86-D60-60G-102										1586347	EAMM-U-86-D60-60G-102				
EAMM-U-86-D60-60G-102-S1										1437163	EAMM-U-86-D60-60G-102-S1				
EAMM-U-86-D60-70A-102										1212477	EAMM-U-86-D60-70A-102				
EAMM-U-86-D60-70A-102-S1										1212835	EAMM-U-86-D60-70A-102-S1				
EAMM-U-86-D60-87A-102										1215784	EAMM-U-86-D60-87A-102				
EAMM-U-86-D60-87A-102-S1										1215810	EAMM-U-86-D60-87A-102-S1				
EAMM-U-110-D60-60G-120	110	56.5	M8	225	120	45	56.5	82	16	1543240	EAMM-U-110-D60-60G-120				
EAMM-U-110-D60-60G-120-S1										1436183	EAMM-U-110-D60-60G-120-S1				
EAMM-U-110-D60-60H-120										1542264	EAMM-U-110-D60-60H-120				
EAMM-U-110-D60-60H-120-S1										1530621	EAMM-U-110-D60-60H-120-S1				
EAMM-U-110-D60-62B-120										1536988	EAMM-U-110-D60-62B-120				
EAMM-U-110-D60-62B-120-S1										1431443	EAMM-U-110-D60-62B-120-S1				
EAMM-U-110-D60-80G-120										1532949	EAMM-U-110-D60-80G-120				
EAMM-U-110-D60-80G-120-S1										1530875	EAMM-U-110-D60-80G-120-S1				
EAMM-U-110-D60-100A-120										1202436	EAMM-U-110-D60-100A-120				
EAMM-U-110-D60-100A-120-S1										1203112	EAMM-U-110-D60-100A-120-S1				
EAMM-U-110-D80-80G-120	110	72	M10	235	120	55	72	82	20.5	1589614	EAMM-U-110-D80-80G-120				
EAMM-U-110-D80-80G-120-S1										1589706	EAMM-U-110-D80-80G-120-S1				
EAMM-U-110-D80-100A-120										1465438	EAMM-U-110-D80-100A-120				
EAMM-U-110-D80-100A-120-S1										1433650	EAMM-U-110-D80-100A-120-S1				
EAMM-U-145-D80-140A-188	145	72	M10	348	188	70	72	99.5	25	1465530	EAMM-U-145-D80-140A-188				
EAMM-U-145-D80-140A-188-S1										1433709	EAMM-U-145-D80-140A-188-S1				
EAMM-U-145-D100-140A-188		89											89	1465541	EAMM-U-145-D100-140A-188
EAMM-U-145-D100-140A-188-S1														1433852	EAMM-U-145-D100-140A-188-S1

# Parallel kits EAMM-U

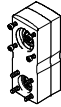
Accessories

## Counter bearing EAMG

Material:  
Wrought aluminium alloy  
RoHS-compliant

Can only be used in combination with a parallel kit as per the illustrations (→ page 3 ... 10).

A counter bearing EAMG reduces the load on the axis or motor bearings to improve the service life under high loads. A clamping sleeve EAMH is additionally required for each counter bearing.



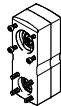
Ordering data							
Type	For size	Max. rotational speed [rpm]	Ambient temperature [°C]	Weight [g]	Part No.	Type	
EAMG-U1-50	50	6,000	-10 ... +60	20	1354281	EAMG-U1-50	
EAMG-U1-60	60	6,000		35	1354282	EAMG-U1-60	
EAMG-U1-86	86	5,000		83	1354283	EAMG-U1-86	
EAMG-U1-110	110	5,000		169	1354284	EAMG-U1-110	
EAMG-U1-145	145	4,000		186	1354285	EAMG-U1-145	

## Clamping sleeve EAMH

Material:  
Corrosion-resistant steel  
RoHS-compliant

Can only be used in combination with a parallel kit as per the illustrations (→ page 3 ... 10).

To retrofit the counter bearing, the clamping sleeve without trunnion included as standard in the parallel kit must be replaced by the clamping sleeve EAMH-...-P with integrated trunnion. The appropriate clamping sleeve size for the counter bearing is determined by the size of the parallel kit.



Ordering data								
Type	For size	For shaft Ø, motor/axis Ø h7 ... k7	Max. rotational speed [rpm]	Mass moment of inertia [kg mm <sup>2</sup> ]	Ambient temperature [°C]	Weight [g]	Part No.	Type
EAMH-50-5-C13.6-P	50	5	6,000	0.39	-10 ... +60	20	1354092	EAMH-50-5-C13.6-P
EAMH-50-6-C13.6-P	50	6	6,000	0.38		19	1354093	EAMH-50-6-C13.6-P
EAMH-50-8-C13.6-P	50	8	6,000	0.35		16	1354094	EAMH-50-8-C13.6-P
EAMH-60-6-C18.1-P	60	6	6,000	1.57		44	1354095	EAMH-60-6-C18.1-P
EAMH-60-6.35-C18.1-P	60	6.35	6,000	1.56		43	1354096	EAMH-60-6.35-C18.1-P
EAMH-60-8-C18.1-P	60	8	6,000	1.53		41	1354097	EAMH-60-8-C18.1-P
EAMH-60-9-C18.1-P	60	9	6,000	1.5		39	1354098	EAMH-60-9-C18.1-P
EAMH-60-10-C18.1-P	60	10	6,000	1.4		38	1545242	EAMH-60-10-C18.1-P
EAMH-60-12-C18.1-P	60	12	6,000	1.3		32	1354099	EAMH-60-12-C18.1-P
EAMH-86-8-C27.3-P	86	8	5,000	10.3		128	1354100	EAMH-86-8-C27.3-P
EAMH-86-11-C27.3-P	86	11	5,000	10.1		119	1354101	EAMH-86-11-C27.3-P
EAMH-86-12-C27.3-P	86	12	5,000	10		115	1354102	EAMH-86-12-C27.3-P
EAMH-86-14-C27.3-P	86	14	5,000	8.74		103	1459337	EAMH-86-14-C27.3-P

## Parallel kits EAMM-U

Accessories

FESTO

Ordering data									
Type	For size	For shaft Ø, motor/axis Ø h7 ... k7	Max. rota- tional speed [rpm]	Mass moment of inertia [kg mm <sup>2</sup> ]	Ambient temperature [°C]	Weight [g]	Part No.	Type	
EAMH-110-11-C34-P	110	11	5,000	33.2	-10 ... +60	270	1545245	EAMH-110-11-C34-P	
EAMH-110-12-C34-P	110	12	5,000	36.3		278	1354103	EAMH-110-12-C34-P	
EAMH-110-14-C34-P	110	14	5,000	35.8		267	1354104	EAMH-110-14-C34-P	
EAMH-110-16-C34-P	110	16	5,000	35.1		254	1354105	EAMH-110-16-C34-P	
EAMH-110-19-C34-P	110	19	5,000	33.3		230	1354106	EAMH-110-19-C34-P	
EAMH-110-20-C34-P	110	20	5,000	30.2		217	1545246	EAMH-110-20-C34-P	
EAMH-110-25-C34-P	110	25	5,000	25.8		170	1354107	EAMH-110-25-C34-P	
EAMH-145-12-C34-P	145	12	4,000	43.9		338	1354108	EAMH-145-12-C34-P	
EAMH-145-19-C34-P	145	19	4,000	38		281	1459342	EAMH-145-19-C34-P	
EAMH-145-24-C34-P	145	24	4,000	34		229	1354109	EAMH-145-24-C34-P	
EAMH-145-25-C34-P	145	25	4,000	32.1		217	1354110	EAMH-145-25-C34-P	

### Clamping component EADT

Material:

Plastic

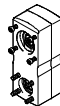
RoHS-compliant

For adjusting the toothed belt  
pretension with EAMM-U-110 and  
EAMM-U-145.

The motor is pushed away from the  
axis mechanism by turning the clamp-  
ing component secured in a hole in  
the housing (the motor can be moved  
in a slot for this purpose).

This enables high toothed belt  
pretension forces to be generated  
with low torques at the clamping  
component.

Can only be used in combination  
with a parallel kit as per the illus-  
trations (→ page 3 ... 10).



Ordering data				
Type	Ambient temperature [°C]	Weight [g]	Part No.	Type
EADT-E-U1-110	-10 ... +60	9	1461069	EADT-E-U1-110