

Water separators MS-LWS, MS series, NPT

FESTO

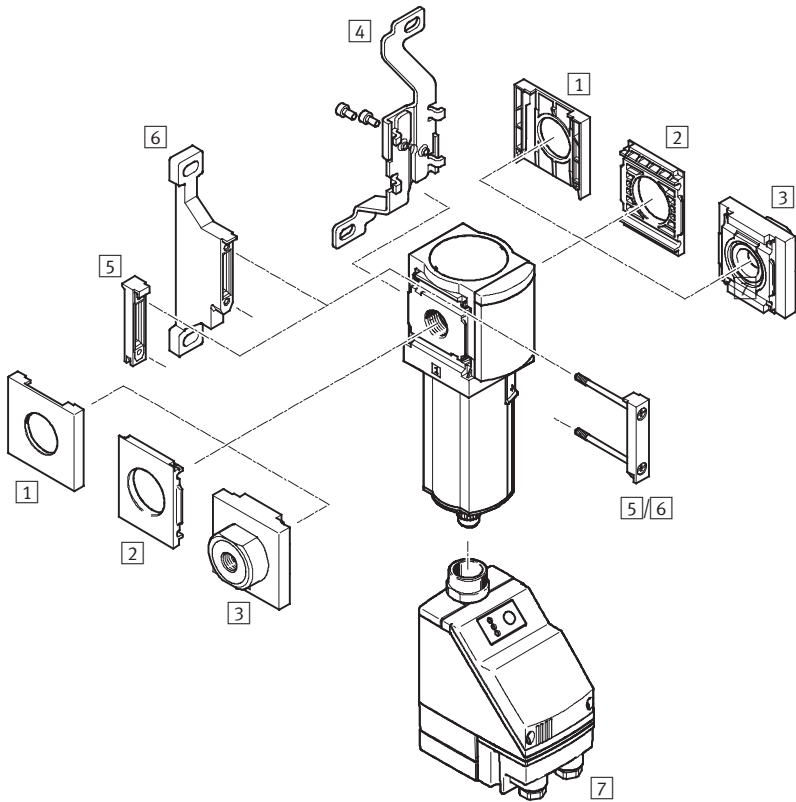


Water separators MS6N-LWS, MS series, NPT

Peripherals overview

FESTO

Water separator MS6N-LWS



Note

Additional accessories:

- Module connector for combination with size MS4/MS6 or size MS9 → Internet: amv, rmv, armv
- Adapter for mounting on profiles → Internet: ipm-80, ipm-40-80, ipm-80-80

Mounting attachments and accessories

		Individual device		Combination		→ Page/Internet
		Without connecting plate	With connecting plate	Without connecting plate	With connecting plate	
1	Cover cap MS6-END	■	-	■	-	ms6-end
2	Mounting plate MS6-AEND	■ ¹⁾	-	■ ¹⁾	-	ms6-aend
3	Connecting plate MS6N-AQ...	-	■ ¹⁾	-	■ ¹⁾	ms6n-aq
4	Mounting bracket MS6-WB	■	■	-	-	ms6-wb
5	Module connector MS6-MV	-	■	■	■	ms6-mv
6	Mounting bracket MS6-WP	■	■	■	■	ms6-wp
	Mounting bracket (not illustrated) MS6-WPB/WPE/WPM	■	■	■	■	ms6-wp
7	Fully automatic, electrically actuated condensate drain E1 ... E4	■	■	■	■	7

1) Module connector MS6-MV [5] or mounting bracket MS6-WP/WPB/WPE/WPM [6] is required for mounting.

Water separators MS6N-LWS, MS series, NPT

Type codes

		MS	6	N	-	LWS	-	1/4	-	U	-	V
Series												
MS	Standard service unit											
Size												
6	Grid dimension 62 mm											
Thread												
N	NPT thread											
Service function												
LWS	Water separator											
Pneumatic connection												
1/4	Thread NPT1/4-18											
3/8	Thread NPT3/8-18											
1/2	Thread NPT1/2-14											
Bowl guard												
U	Integrated as metal bowl											
Condensate drain												
V	Fully automatic											

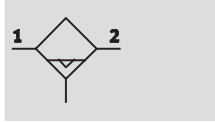
Further variants can be ordered using the modular system → 7

- Connecting plates
- Condensate drain
- Type of mounting
- Alternative flow direction

Water separators MS6N-LWS, MS series, NPT


Technical data

Condensate drain,
fully automatic



Flow rate
2,400 ... 3,800 l/min

Temperature range
+1 ... +60 °C

 Supply pressure
0.8 ... 16 bar



The maintenance-free water separator removes condensate from the compressed air.

- Constantly high condensate separation (99%) up to the maximum flow rate
- Available with fully automatic or fully automatic, electrically actuated condensate drain
- Metal bowl

General technical data				
Size	MS6			
Pneumatic connection 1, 2	NPT $\frac{1}{4}$ -18	NPT $\frac{3}{8}$ -18	NPT $\frac{1}{2}$ -14	NPT $\frac{1}{4}$ -18 ... NPT $\frac{3}{4}$ -14 (with connecting plate AQ...)
Constructional design	Centrifugal separator			
Type of mounting	Via accessories			
	In-line installation			
Mounting position	Vertical $\pm 5^\circ$			
Air purity class at the output	-.7.- to DIN ISO 8573-1			
Bowl guard	Integrated as metal bowl			
Condensate drain	Fully automatic			
	Fully automatic, electrically actuated			
Degree of condensate separation [%]	99			
Max. condensate volume [ml]	38			

Standard nominal flow rate $q_{nN}^{1)}$			
Size	MS6		
Pneumatic connection	NPT $\frac{1}{4}$ -18	NPT $\frac{3}{8}$ -18	NPT $\frac{1}{2}$ -14
q_{nN} [l/min]	2,400	3,500	3,800

1) Measured at $p_1 = 6$ bar and $\Delta p = 1$ bar

Operating and environmental conditions		
Condensate drain	Fully automatic V	Fully automatic, electrically actuated E1 ... E4
Size	MS6	
Supply pressure [bar]	2 ... 12	0.8 ... 16
Operating medium	Compressed air	
Ambient temperature [°C]	+5 ... +60	+1 ... +60
Temperature of medium [°C]	+5 ... +60	+1 ... +60
Storage temperature [°C]	-10 ... +60	+1 ... +60
Corrosion resistance class CRC ¹⁾	2	

1) Corrosion resistance class 2 to Festo standard 940 070
Components subject to moderate corrosion stress. Externally visible parts with primarily decorative surface requirements which are in direct contact with a normal industrial environment or media such as coolants or lubricants.

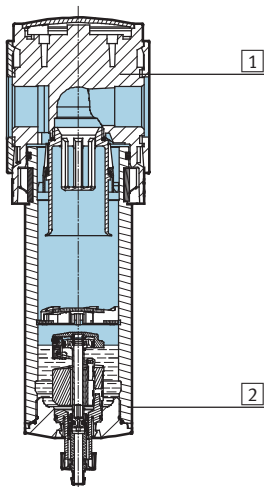
Water separators MS6N-LWS, MS series, NPT

Technical data

Weight [g]	
Size	MS6
Water separator	820
Water separator with fully automatic, electrically actuated condensate drain E1 ... E4	1,800

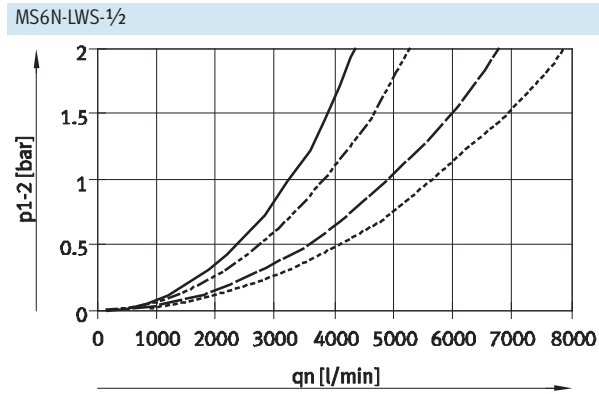
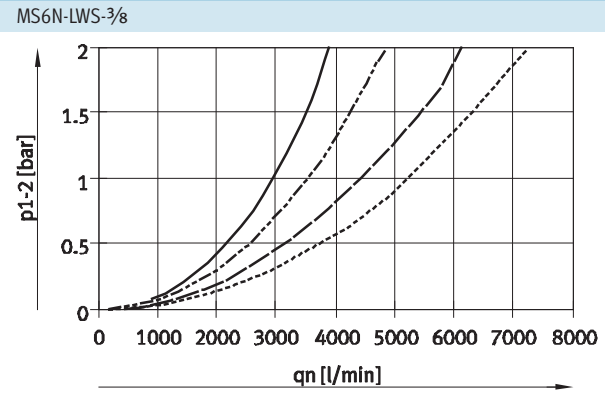
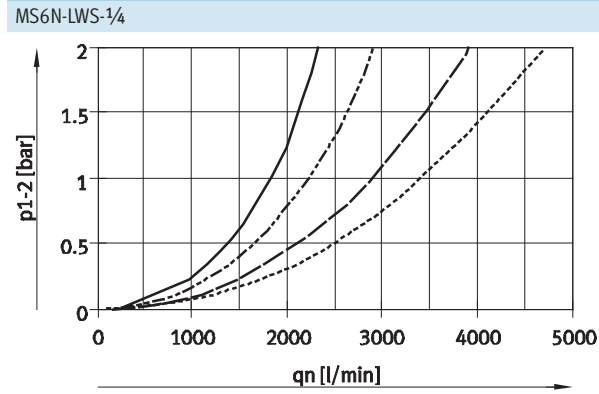
Materials

Sectional view



Water separator		
1	Housing	Die-cast aluminium
2	Bowl	Wrought aluminium alloy
	Inspection window	PA
-	Seals	NBR
Note on materials		Free of copper and PTFE
		RoHS-compliant (not with variant E1, E2, E3 or E4)

Standard flow rate q_n as a function of differential pressure p_{1-2}



- 4 bar
- - - 6 bar
- 10 bar
- - - 14 bar

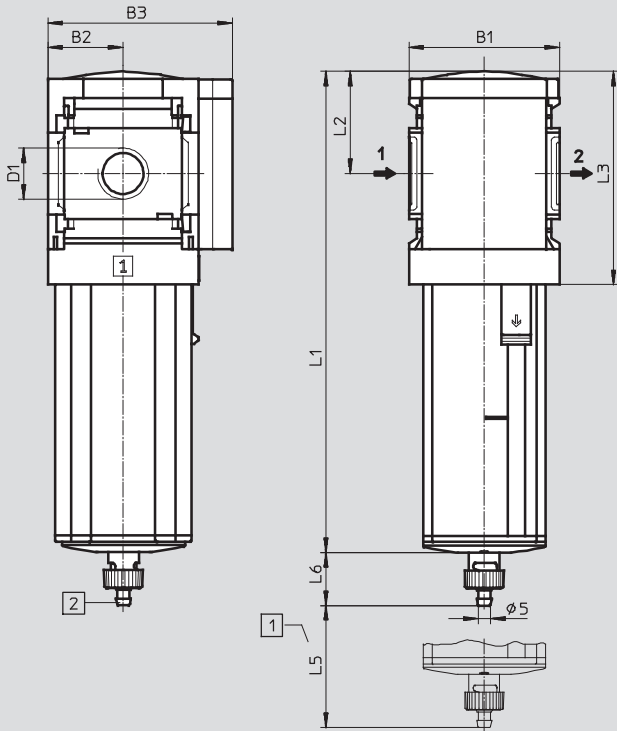
Water separators MS6N-LWS, MS series, NPT

Technical data

Dimensions – Standard

Download CAD Data → www.festo.com/us/cad

Fully automatic condensate drain V



- 1 Installation dimensions
- 2 Barbed connector for plastic tubing PCN-4

→ Flow direction

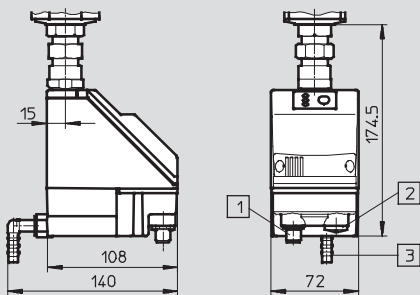
Type	B1	B2	B3	D1	L1	L2	L3	L5	L6
MS6N-LWS-1/4-...-V	62	31	76	NPT1/4-18	198	42	87	68	22
MS6N-LWS-3/8-...-V				NPT3/8-18					
MS6N-LWS-1/2-...-V				NPT1/2-14					

Dimensions – Condensate drain

Download CAD Data → www.festo.com/us/cad

Fully automatic, electrically actuated E1 ... E4

Technical data → Internet: pwea



- 1 Variant E1:
Condensate drain PWEA-AP with M12x1 plug, 5-pin for NEBU-M12...-LE5
- 2 Variant E2/E3/E4:
Condensate drain PWEA-AC with cable conduit fitting Pg9

- 3 Connection 360° rotatable for plastic tubing PUN-H-12x2

Ordering data

Size	Condensate drain	Connection	Part No.	Type
Integrated as metal bowl				
MS6	Fully automatic	NPT1/4-18	564871	MS6N-LWS-1/4-U-V
		NPT3/8-18	564872	MS6N-LWS-3/8-U-V
		NPT1/2-14	564873	MS6N-LWS-1/2-U-V

Water separators MS6N-LWS, MS series, NPT

Ordering data – Modular products

M Mandatory data								O Options	
Module No.	Series	Size	Thread	Function	Connection size	Bowl guard	Condensate drain	Type of mounting	Alternative flow direction
564898	MS	6	N	LWS	¼, ⅜, ½, AQN, AQP, AQR, AQS	U	V, E1, E2, E3, E4	WP, WPM, WB	Z
Ordering example									
564898	MS	6	N	- LWS	- AQN	- U	- V	- WP	- Z

Ordering table		Grid dimension	[mm]	62	Condi- tions	Code	Enter code
M	Module No.	564898					
	Series	Standard				MS	MS
	Size	6				6	6
	Thread	NPT thread				N	N
	Function	Water separator				-LWS	-LWS
	Connection size	Thread NPT¼				-¼	
		Thread NPT⅜				-⅜	
		Thread NPT½				-½	
		Connecting plate NPT¼				-AQN	
		Connecting plate NPT⅜				-AQP	
		Connecting plate NPT½				-AQR	
		Connecting plate NPT¾				-AQS	
	Bowl guard	Metal bowl				-U	-U
	Condensate drain	Fully automatic (P1 max. 12 bar)				-V	
		External fully automatic condensate drain, electrical, 24 V DC, M12 (P1 max. 16 bar)				-E1	
		External fully automatic condensate drain, electrical, 110 V AC, terminals (P1 max. 16 bar)				-E2	
		External fully automatic condensate drain, electrical, 230 V AC, terminals (P1 max. 16 bar)				-E3	
		External fully automatic condensate drain, electrical, 24 V DC, terminals (P1 max. 16 bar)				-E4	
O	Type of mounting	Mounting bracket			1	-WP	
		Mounting bracket			1	-WPM	
		Mounting bracket				-WB	
	Alternative flow direction	Flow direction from right to left				-Z	

1 WP, WPM Only with connecting plate AQN, AQP, AQR or AQS

Transfer order code

564898	MS	6	N	- LWS	-	-U	-	-	-
--------	----	---	---	-------	---	----	---	---	---

Product Range and Company Overview

A Complete Suite of Automation Services

Our experienced engineers provide complete support at every stage of your development process, including: conceptualization, analysis, engineering, design, assembly, documentation, validation, and production.



Custom Automation Components
Complete custom engineered solutions



Custom Control Cabinets
Comprehensive engineering support and on-site services



Complete Systems
Shipment, stocking and storage services

The Broadest Range of Automation Components

With a comprehensive line of more than 30,000 automation components, Festo is capable of solving the most complex automation requirements.



Electromechanical
Electromechanical actuators, motors, controllers & drives



Pneumatics
Pneumatic linear and rotary actuators, valves, and air supply



PLCs and I/O Devices
PLC's, operator interfaces, sensors and I/O devices

Supporting Advanced Automation... As No One Else Can!

Festo is a leading global manufacturer of pneumatic and electromechanical systems, components and controls for industrial automation, with more than 12,000 employees in 56 national headquarters serving more than 180 countries. For more than 80 years, Festo has continuously elevated the state of manufacturing with innovations and optimized motion control solutions that deliver higher performing, more profitable automated manufacturing and processing equipment. Our dedication to the advancement of automation extends beyond technology to the education and development of current and future automation and robotics designers with simulation tools, teaching programs, and on-site services.

Quality Assurance, ISO 9001 and ISO 14001 Certifications

Festo Corporation is committed to supply all Festo products and services that will meet or exceed our customers' requirements in product quality, delivery, customer service and satisfaction.

To meet this commitment, we strive to ensure a consistent, integrated, and systematic approach to management that will meet or exceed the requirements of the ISO 9001 standard for Quality Management and the ISO 14001 standard for Environmental Management.



© Copyright 2008, Festo Corporation. While every effort is made to ensure that all dimensions and specifications are correct, Festo cannot guarantee that publications are completely free of any error, in particular typing or printing errors. Accordingly, Festo cannot be held responsible for the same. For Liability and Warranty conditions, refer to our "Terms and Conditions of Sale", available from your local Festo office. All rights reserved. No part of this publication may be reproduced, distributed, or transmitted in any form or by any means, electronic, mechanical, photocopying or otherwise, without the prior written permission of Festo. All technical data subject to change according to technical update.



Printed on recycled paper at New Horizon Graphic, Inc., FSC certified as an environmentally friendly printing plant.

Festo North America

Festo Regional Contact Center

5300 Explorer Drive
Mississauga, Ontario L4W 5G4
Canada

USA Customers:

For ordering assistance,

Call: 1.800.99.FESTO (1.800.993.3786)

Fax: 1.800.96.FESTO (1.800.963.3786)

Email: customer.service@us.festo.com

For technical support,

Call: 1.866.GO.FESTO (1.866.463.3786)

Fax: 1.800.96.FESTO (1.800.963.3786)

Email: product.support@us.festo.com

Canadian Customers:

Call: 1.877.GO.FESTO (1.877.463.3786)

Fax: 1.877.FX.FESTO (1.877.393.3786)

Email: festo.canada@ca.festo.com

USA Headquarters

Festo Corporation
395 Moreland Road
P.O. Box 18023
Hauppauge, NY 11788, USA
www.festo.com/us

USA Sales Offices

Appleton

North 922 Tower View Drive, Suite N
Greenville, WI 54942, USA

Boston

120 Presidential Way, Suite 330
Woburn, MA 01801, USA

Chicago

1441 East Business Center Drive
Mt. Prospect, IL 60056, USA

Dallas

1825 Lakeway Drive, Suite 600
Lewisville, TX 75057, USA

Detroit – Automotive Engineering Center

2601 Cambridge Court, Suite 320
Auburn Hills, MI 48326, USA

New York

395 Moreland Road
Hauppauge, NY 11788, USA

Silicon Valley

4935 Southfront Road, Suite F
Livermore, CA 94550, USA

United States



USA Headquarters, East: Festo Corp., 395 Moreland Road, Hauppauge, NY 11788

Phone: 1.631.435.0800; Fax: 1.631.435.8026;

Email: info@festo-usa.com

www.festo.com/us

Canada



Headquarters: Festo Inc., 5300 Explorer Drive, Mississauga, Ontario L4W 5G4

Phone: 1.905.624.9000; Fax: 1.905.624.9001;

Email: festo.canada@ca.festo.com

www.festo.ca

Mexico



Headquarters: Festo Pneumatic, S.A., Av. Ceylán 3, Col. Tequesquahuac,
54020 Tlalneantla, Edo. de México

Phone: 011 52 [55] 53 21 66 00; Fax: 011 52 [55] 53 21 66 65;

Email: festo.mexico@mx.festo.com

www.festo.com/mx

Central USA

Festo Corporation
1441 East Business
Center Drive
Mt. Prospect, IL 60056, USA
Phone: 1.847.759.2600
Fax: 1.847.768.9480



Western USA

Festo Corporation
4935 Southfront Road,
Suite F
Livermore, CA 94550, USA
Phone: 1.925.371.1099
Fax: 1.925.245.1286



Festo Worldwide

Argentina Australia Austria Belarus Belgium Brazil Bulgaria Canada Chile China Colombia Croatia Czech Republic Denmark
Estonia Finland France Germany Great Britain Greece Hong Kong Hungary India Indonesia Iran Ireland Israel Italy Japan Latvia
Lithuania Malaysia Mexico Netherlands New Zealand Norway Peru Philippines Poland Romania Russia Serbia Singapore
Slovakia Slovenia South Africa South Korea Spain Sweden Switzerland Taiwan Thailand Turkey Ukraine United States Venezuela

www.festo.com