

## Pressure regulators LR/LRS

**FESTO**



# Pressure regulators LR/LRS

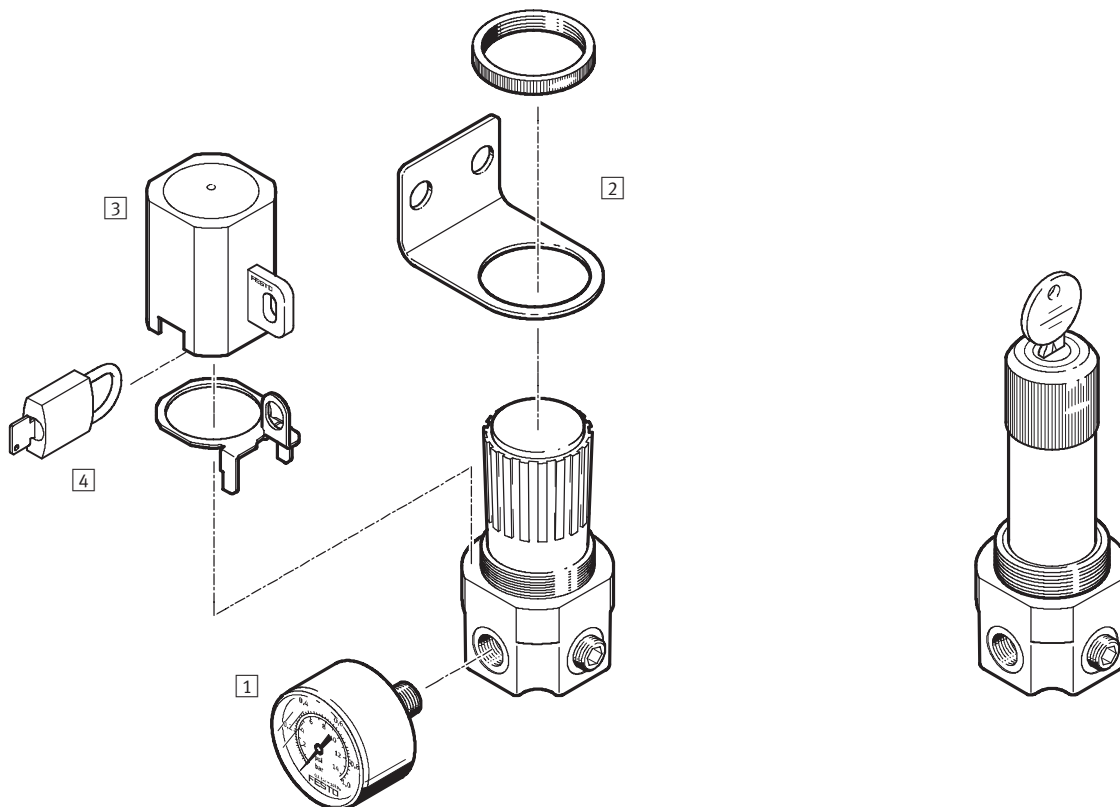
Peripherals overview and type codes

FESTO

## Peripherals overview

Pressure regulator LR

Pressure regulator LRS, lockable



Mounting attachments and accessories		→ Page/Internet
1	Pressure gauge MA	ma
2	Mounting bracket HR-D	7
3	Regulator lock LRVS-G-1/8 with lock plate	7
4	Padlock LRVS-D	7

## Type codes

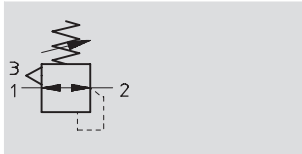
LR		1/8	G	7
Service function				
LR	Pressure regulator			
LRS	Pressure regulator, lockable			
Pneumatic connection				
1/8	Thread G1/8			
Version code				
G	Version code			
Pressure regulation range				
7	0.5 ... 7 bar			
	0.5 ... 12 bar			

# Pressure regulators LR/LRS

Technical data

**FESTO**

## Function



- - Flow rate  
600 ... 700 l/min
- - Temperature range  
-10 ... +80 °C
- - Input pressure  
1 ... 20 bar

The pressure regulator is free of paint-wetting impairment substances.



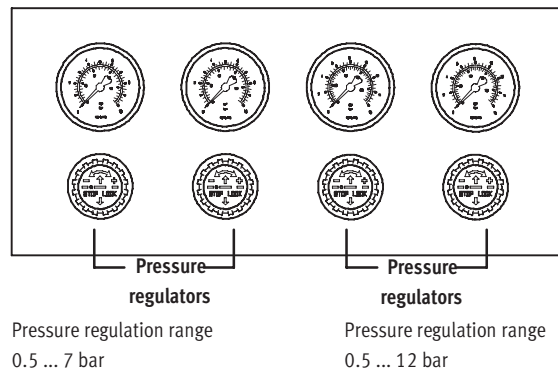
- Larger design (brass housing)
- Good flow rate performance
- Precise diaphragm regulator
- Detenting regulator knob
- Identical mounting bracket to D series
- Suitable for input pressures up to  $p_1 = 20$  bar
- 2 pressure regulation ranges:  
0.5 ... 7 bar and 0.5 ... 12 bar

The pressure regulator maintains an essentially constant working pressure at the regulator outlet, regardless of pressure fluctuations in the compressed air network. The regulated operating pressure can be reduced by means of the built-in secondary exhaust, even without compressed air consumers.

The pressure regulator is available in two design variants:

- LR(S)-1/8-G for standard applications.
- LR(S)-1/8-G-7 for special individual cases, e.g. regulators in the pressure range up to 7 bar. This variant demonstrates optimal flow and control characteristics.

## Panel mounting



General technical data		
Type	LR(S)-1/8-G	LR(S)-1/8-G-7
Pneumatic connection	G $\frac{1}{8}$	
Operating medium	Filtered compressed air, lubricated or unlubricated (grade of filtration $\leq 40 \mu\text{m}$ )	
Design	Input pressure compensated diaphragm pressure regulator with secondary exhaust	
Type of mounting	Via accessories	
	Front panel mounting, installation hole $\varnothing 36.5 \text{ mm}$	
Mounting position	Any	
Max. hysteresis [bar]	0.2	
Input pressure [bar]	1 ... 20	
Pressure regulation range [bar]	0.5 ... 12	0.5 ... 7

Standard nominal flow rate <sup>1)</sup> q <sub>N</sub> [l/min]	
Pressure regulation range 0.5 ... 7 bar	700
Pressure regulation range 0.5 ... 12 bar	600

1) With 10 bar input pressure, 6 bar working pressure and  $\Delta p = 1$  bar.

# Pressure regulators LR/LRS

Technical data

FESTO

Ambient conditions		
Ambient temperature	[°C]	-10 ... +80
Corrosion resistance	CRC <sup>1)</sup>	2

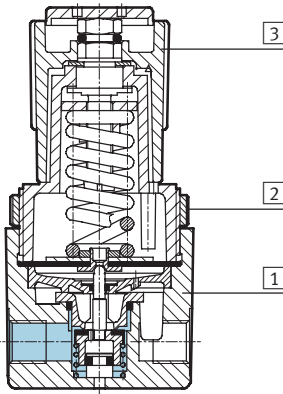
1) Corrosion resistance class 2 according to Festo standard 940 070

Components requiring moderate corrosion resistance. Externally visible parts with primarily decorative surface requirements which are in direct contact with a surrounding industrial atmosphere or media such as cooling or lubricating agents.

Weights [g]		
	LR	LRS
Pressure regulator	320	420

## Materials

Sectional view

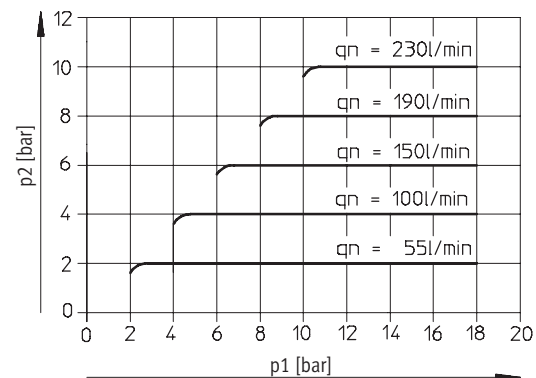


Pressure regulator		
1	Housing	Brass
2	Knurled nut	Aluminium
3	Rotary knob	LR: Polyacetate LRS: Aluminium
-	Seals	Nitrile rubber

## Primary pressure compensation –

Primary pressure  $p_1$  as a function of output pressure  $p_2$

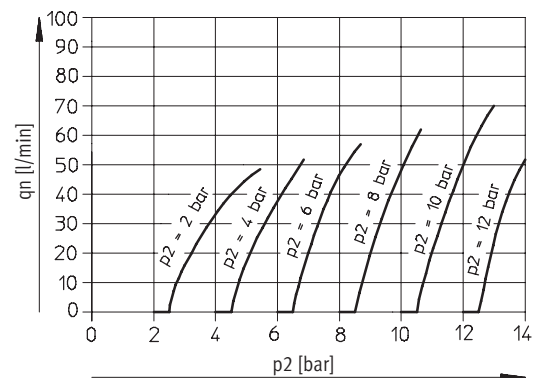
LR(S)-1/8-G(-7)



## Secondary venting –

Output pressure  $p_2$  as a function of standard flow rate  $q_n$

LR(S)-1/8-G(-7)



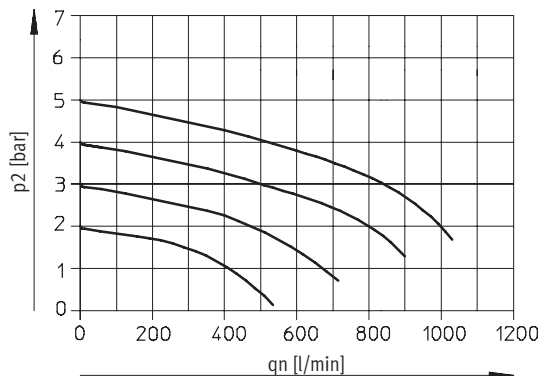
# Pressure regulators LR/LRS

Technical data

FESTO

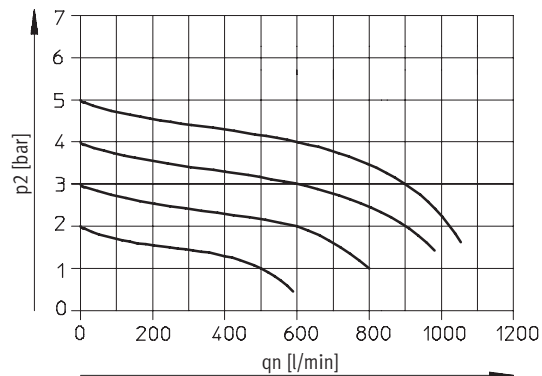
## Standard flow rate $q_n$ as a function of the output pressure $p_2$

LR(S)-1/8-G



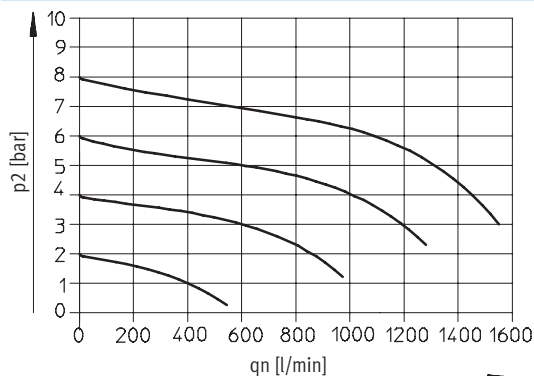
Primary pressure  $p_1 = 7$  bar

LR(S)-1/8-G-7



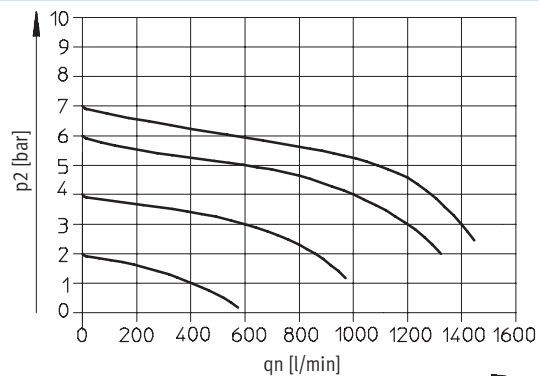
Primary pressure  $p_1 = 7$  bar

LR(S)-1/8-G



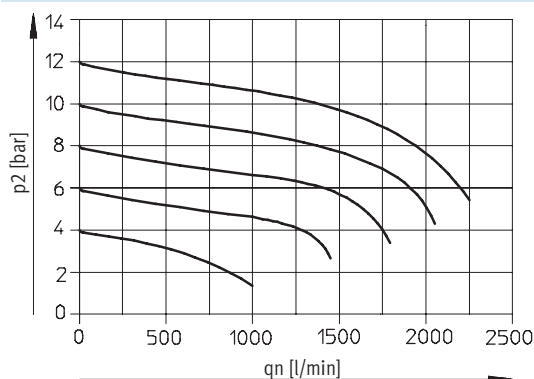
Primary pressure  $p_1 = 10$  bar

LR(S)-1/8-G-7



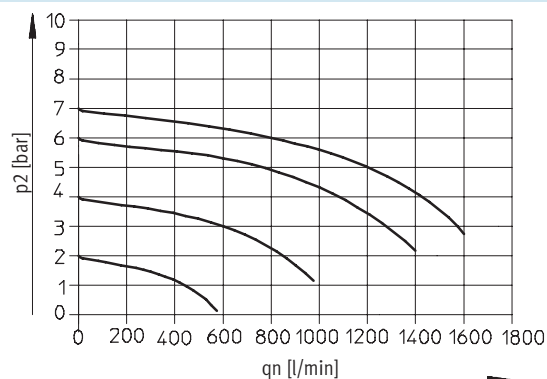
Primary pressure  $p_1 = 10$  bar

LR(S)-1/8-G



Primary pressure  $p_1 = 14$  bar

LR(S)-1/8-G-7



Primary pressure  $p_1 = 14$  bar

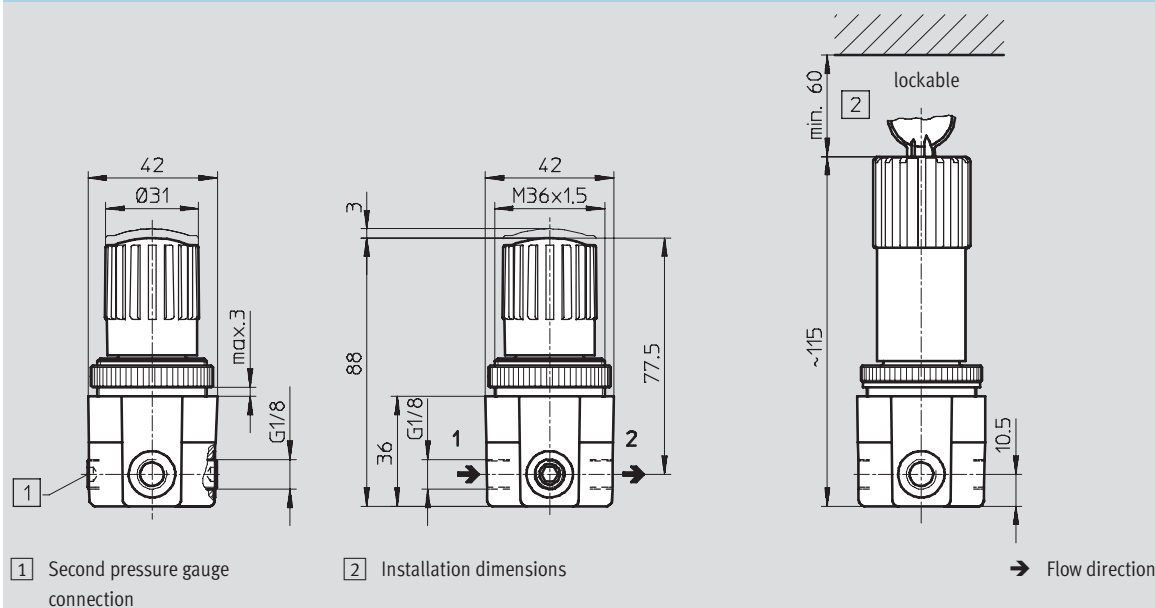
# Pressure regulators LR/LRS

Technical data

**FESTO**

## Dimensions

Download CAD data → [www.festo.com](http://www.festo.com)



Ordering data			
Connection	Pressure regulation range 0.5 ... 7 bar		Pressure regulation range 0.5 ... 12 bar
	Part No.	Type	Part No. Type
G1/8	159506	LR-1/8-G-7	159505 LR-1/8-G
lockable			
G1/8	194695	LRS-1/8-G-7	194694 LRS-1/8-G

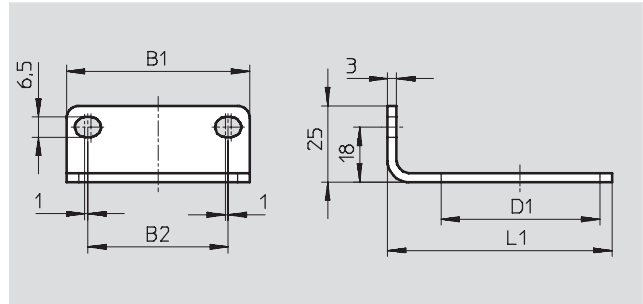
## Pressure regulators LR/LRS

FESTO

Accessories

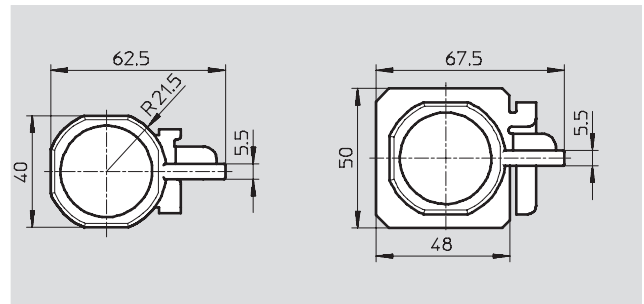
### Mounting bracket HR-D for wall mounting

Material:  
Galvanised steel



Ordering data				
B1	B2	D1 Ø	L1	Part No. Type
42	28	36	57.5	164936 HR-D-MINI

### Regulator lock LRVS



Ordering data			
Connection	Weight [g]	Part No.	Type
G $\frac{1}{8}$	36	196080	LRVS-G- $\frac{1}{8}$

### Padlock LRVS-D

Material:  
Housing: Brass

Ambient temperature:  
-20 ... +60 °C



Ordering data			
Weight [g]	Part No.	Type	
120	193786	LRVS-D	

## Product Range and Company Overview

### A Complete Suite of Automation Services

Our experienced engineers provide complete support at every stage of your development process, including: conceptualization, analysis, engineering, design, assembly, documentation, validation, and production.



**Custom Automation Components**  
Complete custom engineered solutions



**Custom Control Cabinets**  
Comprehensive engineering support and on-site services



**Complete Systems**  
Shipment, stocking and storage services

### The Broadest Range of Automation Components

With a comprehensive line of more than 30,000 automation components, Festo is capable of solving the most complex automation requirements.



**Electromechanical**  
Electromechanical actuators, motors, controllers & drives



**Pneumatics**  
Pneumatic linear and rotary actuators, valves, and air supply



**PLCs and I/O Devices**  
PLC's, operator interfaces, sensors and I/O devices

### Supporting Advanced Automation... As No One Else Can!

Festo is a leading global manufacturer of pneumatic and electromechanical systems, components and controls for industrial automation, with more than 12,000 employees in 56 national headquarters serving more than 180 countries. For more than 80 years, Festo has continuously elevated the state of manufacturing with innovations and optimized motion control solutions that deliver higher performing, more profitable automated manufacturing and processing equipment. Our dedication to the advancement of automation extends beyond technology to the education and development of current and future automation and robotics designers with simulation tools, teaching programs, and on-site services.

### Quality Assurance, ISO 9001 and ISO 14001 Certifications

Festo Corporation is committed to supply all Festo products and services that will meet or exceed our customers' requirements in product quality, delivery, customer service and satisfaction.

To meet this commitment, we strive to ensure a consistent, integrated, and systematic approach to management that will meet or exceed the requirements of the ISO 9001 standard for Quality Management and the ISO 14001 standard for Environmental Management.



© Copyright 2008, Festo Corporation. While every effort is made to ensure that all dimensions and specifications are correct, Festo cannot guarantee that publications are completely free of any error, in particular typing or printing errors. Accordingly, Festo cannot be held responsible for the same. For Liability and Warranty conditions, refer to our "Terms and Conditions of Sale", available from your local Festo office. All rights reserved. No part of this publication may be reproduced, distributed, or transmitted in any form or by any means, electronic, mechanical, photocopying or otherwise, without the prior written permission of Festo. All technical data subject to change according to technical update.



Printed on recycled paper at New Horizon Graphic, Inc., FSC certified as an environmentally friendly printing plant.



# Festo North America

## Festo Regional Contact Center

5300 Explorer Drive  
Mississauga, Ontario L4W 5G4  
Canada

### USA Customers:

For ordering assistance,

**Call:** 1.800.99.FESTO (1.800.993.3786)

**Fax:** 1.800.96.FESTO (1.800.963.3786)

**Email:** [customer.service@us.festo.com](mailto:customer.service@us.festo.com)

For technical support,

**Call:** 1.866.GO.FESTO (1.866.463.3786)

**Fax:** 1.800.96.FESTO (1.800.963.3786)

**Email:** [product.support@us.festo.com](mailto:product.support@us.festo.com)

### Canadian Customers:

**Call:** 1.877.GO.FESTO (1.877.463.3786)

**Fax:** 1.877.FX.FESTO (1.877.393.3786)

**Email:** [festo.canada@ca.festo.com](mailto:festo.canada@ca.festo.com)

## USA Headquarters

Festo Corporation  
395 Moreland Road  
P.O. Box 18023  
Hauppauge, NY 11788, USA  
[www.festo.com/us](http://www.festo.com/us)

## USA Sales Offices

### Appleton

North 922 Tower View Drive, Suite N  
Greenville, WI 54942, USA

### Boston

120 Presidential Way, Suite 330  
Woburn, MA 01801, USA

### Chicago

1441 East Business Center Drive  
Mt. Prospect, IL 60056, USA

### Dallas

1825 Lakeway Drive, Suite 600  
Lewisville, TX 75057, USA

### Detroit – Automotive Engineering Center

2601 Cambridge Court, Suite 320  
Auburn Hills, MI 48326, USA

### New York

395 Moreland Road  
Hauppauge, NY 11788, USA

### Silicon Valley

4935 Southfront Road, Suite F  
Livermore, CA 94550, USA

## United States



**USA Headquarters, East:** Festo Corp., 395 Moreland Road, Hauppauge, NY 11788  
Phone: 1.631.435.0800; Fax: 1.631.435.8026;  
Email: [info@festo-usa.com](mailto:info@festo-usa.com) [www.festo.com/us](http://www.festo.com/us)

## Canada



**Headquarters:** Festo Inc., 5300 Explorer Drive, Mississauga, Ontario L4W 5G4  
Phone: 1.905.624.9000; Fax: 1.905.624.9001;  
Email: [festo.canada@ca.festo.com](mailto:festo.canada@ca.festo.com) [www.festo.ca](http://www.festo.ca)

## Mexico



**Headquarters:** Festo Pneumatic, S.A., Av. Ceylán 3, Col. Tequesquahuac,  
54020 Tlalneapantla, Edo. de México  
Phone: 011 52 [55] 53 21 66 00; Fax: 011 52 [55] 53 21 66 65;  
Email: [festo.mexico@mx.festo.com](mailto:festo.mexico@mx.festo.com) [www.festo.com/mx](http://www.festo.com/mx)

## Central USA

Festo Corporation  
1441 East Business  
Center Drive  
Mt. Prospect, IL 60056, USA  
Phone: 1.847.759.2600  
Fax: 1.847.768.9480



## Western USA

Festo Corporation  
4935 Southfront Road,  
Suite F  
Livermore, CA 94550, USA  
Phone: 1.925.371.1099  
Fax: 1.925.245.1286



## Festo Worldwide

Argentina Australia Austria Belarus Belgium Brazil Bulgaria Canada Chile China Colombia Croatia Czech Republic Denmark  
Estonia Finland France Germany Great Britain Greece Hong Kong Hungary India Indonesia Iran Ireland Israel Italy Japan Latvia  
Lithuania Malaysia Mexico Netherlands New Zealand Norway Peru Philippines Poland Romania Russia Serbia Singapore  
Slovakia Slovenia South Africa South Korea Spain Sweden Switzerland Taiwan Thailand Turkey Ukraine United States Venezuela

[www.festo.com](http://www.festo.com)