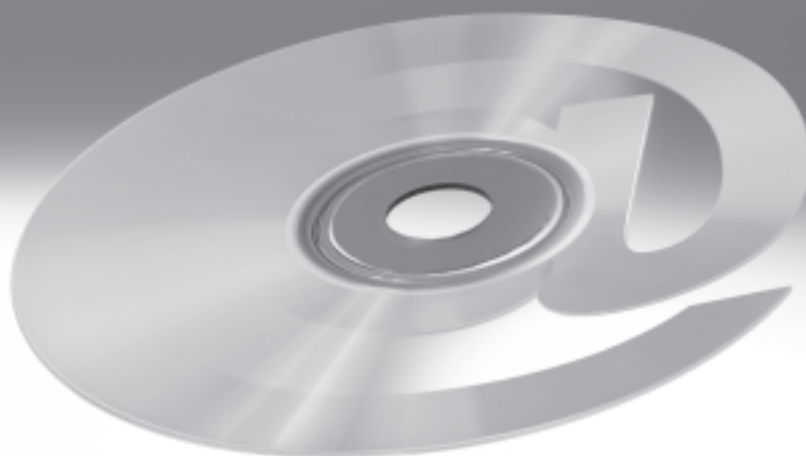


Software FluidDraw®

FESTO



Product features			
Version	FluidDraw version		
	4 ¹⁾	S5	P5
General			
CD-ROM incl. one licence	■	■	–
USB licence dongle with or without RAM	–	–	■
Network-compatible	■	■	■
File format	CT	CIRC	CIRC
Miniature view/preview in Windows Explorer and file dialogues	–	■	■
Automatic and evaluation functions			
Parts lists, optionally via project or selected sheets	□	■	■
Circuit creation for Festo modular products	□	■	■
Text translation, optionally for project or selected sheets	–	–	■
Electrical terminal diagram, cable diagram, cable list	–	–	■
Electrical contact image	–	–	■
Collecting "unpositioned objects", e.g. electrical coils for inserted valves	–	–	■
Renummering identifiers	–	–	■
Project management			
Straightforward list management	■	■	–
Project tree	–	□	■
Libraries and symbols			
Pneumatic components and Festo symbols according to ISO 1219-1	■	■	■
User-specific libraries	■	■	■
Creation of user-specific symbols	□	■	■
Electrical symbols according to EN 60617	–	–	■
Product data			
Festo product catalogue	■	■	■
User-specific product databases	–	–	■
Circuit editor			
Cutting, pasting, grouping, copying, deleting	■	■	■
Aligning highlighted drawing elements and symbols	■	■	■
Rotating, scaling, mirroring	□	■	■
Order: bringing to front or sending to back	–	■	■
Macro objects	–	■	■
User-friendly navigation between the symbol representations for equipment	–	□	■
Equipment identification when inserting symbols	–	–	■
Customisable rules for equipment identification and cross-reference representation	–	–	■
Reversal of direction for electrical terminals and cable cores	–	–	■
Setting electrical bridges	–	–	■
Circuit testing			
Open connections, overlapping objects, duplicate cross-reference markers	■	■	■
Missing link targets	–	■	■
Missing or ambiguous assignments (terminals, cables, etc.)	–	–	■

- Product feature included.
- Product feature with restrictions.
- Product feature not included.
- 1) No longer available.

Product features			
Version	FluidDraw version		
	4 ¹⁾	S5	P5
User interface			
Circuit editor	■	■	■
Library window	■	■	■
Function diagram editor	■	■	■
Customisation of the file paths (version 4: INI file only)	□	■	■
Switching program language (version 4: only with installation or in INI file)	□	■	■
Switching catalogue language (version 4: program language = catalogue language)	□	■	■
Overview window: preview and navigation windows	–	■	■
Project tree window (version S5: single-level project tree)	–	□	■
Drawing and function elements			
Text, graphic	■	■	■
Function diagram	■	■	■
Parts list	■	■	■
Drawing frame	□	■	■
Line, square, circle, arc, ellipse	□	■	■
Attribute linking	–	■	■
Dimensioning, polyline, polygon, T-connectors	–	–	■
Termination points, electrical cables and terminals	–	–	■
Contact images and cross-references	–	–	■
Line thicknesses	8	9	9
Line styles	4	4	4
Line colours (version 4: line colour of the drawing layer only)	8	all	all
Line ends	1	7	7
Fill colours	16	all	all
Drawing aids			
Grid and snap function for connection points	■	■	■
Snap function for drawing elements	–	■	■
Temporary display of auxiliary lines for aligning connection points	–	■	■
Data points for connecting lines	–	■	■
Ruler	–	–	■
Separate object and grid snap	–	–	■
Automatic connection of aligned connection points	–	–	■
Automatic integration of symbols into connecting cables	–	–	■
Drawing layers			
User-specific description text, toggle for display and editing	■	■	■
Option "Include invisible objects in parts lists"	–	■	■
Number	8	255	255
Line thicknesses	8	9	9
Colours	1	16	all
Interfaces (export/import)			
Direct access to the baskets of the Festo product catalogue (offline)	■	■	■
Parts list: TXT, CSV	■	■	■
Circuit graphic import: DXF	■	■	■
Circuit graphic export: BMP, DXF, JPG, GIF, WMF, PNG, TIF (version 4: DXF and TIF only)	□	■	■
Direct parts list transfer to Festo online shop	–	■	■
Circuit graphic export: PDF	–	–	■
Terminal strips, cable lists, translation tables, product data: TXT, CSV	–	–	■
Technical data → Page/Internet			
	–	4	6

- Product feature included.
- Product feature with restrictions.
- Product feature not included.
- 1) No longer available.

Faster pneumatic circuit diagrams

Description

FluidDraw provides you with access to an extensive library of pneumatic symbols.

The ISO standardised pneumatic symbols are categorised according to drives, valves, valve terminals, compressed air preparation, vacuum technology, flow control, non-return valves, etc.

You place the required symbols in the circuit by dragging and dropping or by using the search function.

You can save recurring symbols and circuits as macros and store them in your own libraries.

Importing a Festo parts list (e.g. shopping basket) places the associated symbols on the desktop. All that remains is to arrange them and add the connecting lines. The parts list generator collects all the attributes ascribed to the symbols such as part number, designation, type, etc. in the background. These attributes can be copied from the Festo catalogue or manually assigned. The relationships between the circuit symbol and parts list item are emphasised. You can adapt the parts list layout displayed on the screen or sent to the printer as per your requirements.

The benefits to you

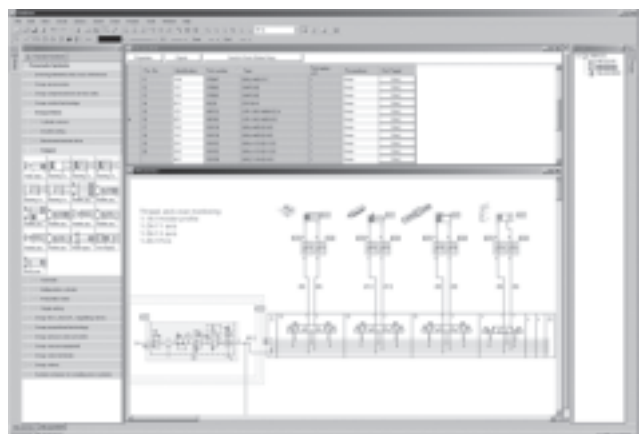
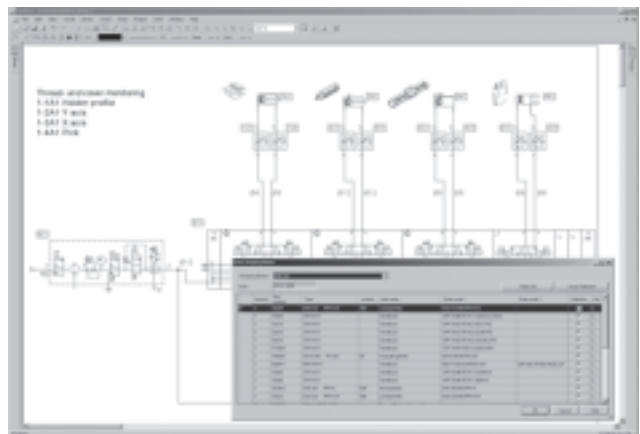
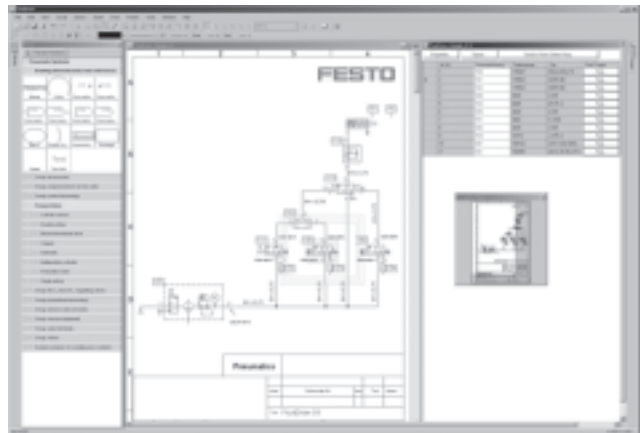
Direct access to ready-drawn symbols
Easy, user-friendly operator guidance
Interface to Festo products (catalogue, online shop)

Program components

- Comprehensive symbol library based on ISO 1219-1
- Easy creation of macros
- Automatic creation of circuits for valve terminals and service unit combinations
- Insertion of picture files
- BMP, DXF, GIF, JPG, PNG, TIF, WMF export of circuit diagrams
- DXF import of circuit graphic
- Simultaneous editing of multiple circuit diagrams
- Equipment identifiers
- Emphasising of symbol and associated parts list item
- Convenient printing functions
- Zoom, grid, clipboard, navigation window, etc.
- Online help

System requirements

Windows 2000/XP/VISTA/7
≥ 512 MB RAM (2000/XP)
≥ 1 GB RAM (VISTA/7)



Functions

Editing

- Progressive rotation and scaling
- Intelligent grid with automatic overlaying of auxiliary lines for aligning symbols
- Improved automatic cable routing
- Manual setting of interpolation points for connecting lines
- New function to make drawing working lines easier
- Multiple window views of a drawing page can be displayed and edited at the same time
- Navigation window with selection of the page detail
- Extended drawing functions
- Simple drawing elements: lines with different arrowheads, rectangle, circle, ellipsis, text, graphic
- Simultaneous editing of the geometric properties of highlighted objects
- Extended undo/redo function
- Free input and positioning of port identifications

Parts lists

- New parts list representation
- Extended functions for selecting the listed project files
- Printing of long lists over multiple pages
- Direct editing of attributes in the parts list
- Search function for components associated with the respective list entry
- Interface to the Festo online shopping basket


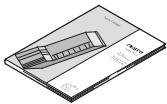

Projects

- Clearer representation of the project files
- Improved administration of the project attributes
- Copying of the globally defined drawing frame to new pages

General

- Greater drawing precision, greater zoom scale as a result (max. 10,000 %)
- New file format in XML syntax
- Extended administration functions for user-specific symbol libraries
- More efficient storage of libraries (better performance in the network)
- Consistent separation of program and user files (fewer problems with permissions in the network)
- Explicit specification of folder paths (no hidden INI entries required)
- Better utilisation of multi-processor systems through the use of background processes
- All attribute values can be displayed at any position as text references
- Support for up to 255 drawing levels
- No internal restriction on the number of objects (support for more extensive circuits/larger projects)
- Direct access to the databases of the Festo catalogue (avoids interface problems with xDKI)
- More precise definition of the page boundaries when printing

Ordering data

	Designation	Scope of delivery	Part No.	Type
	Software	Software 1 network licence	560858	GSWF-CD-FD-S5-L1-ML
	Manual	German manual	560859	GDCW-GSWF-FD-S5-DE
	Software	Software 1 network licence German manual	560860	GSWF-SP-FD-S5-L1-DE

FluidDraw P5® software

Technical data

FESTO

Complete circuit documentation made easy

Description

FluidDraw P5 offers an intelligent drawing editor for circuits with the full functionality of FluidDraw S5.

FluidDraw P5 also includes a variety of other functions for complete circuit documentation.

These functions provide a convenient way of creating electrical circuits. Automatically generated lists such as terminal diagrams, cable diagrams and cable lists can be inserted anywhere in the project during the process.

The equipment identifiers are always up-to-date. A context menu enables quick and easy navigation between the various representations of equipment. Cross-references make them easier to find in the paper printouts.

FluidDraw P5 also enables easy creation and dimensioning of system diagrams or layout drawings for control cabinets and control consoles.

Another highlight is the Autoconnect function. This function enables FluidDraw P5 to automatically connect aligned connection points or integrate symbols into existing connecting cables. Product assignment and identification of connecting cables are also possible.

The Auto-update function ensures that the FluidDraw P5 version is always up-to-date. Further options satisfy a wide range of user requirements, for example customisation of the identification rules, text sizes and folder paths.

You organise your various sheets in a multi-level project tree. Any mistakes you make when creating the circuit will trigger a warning.

Product databases

In FluidDraw P5 you can integrate your own product data and use it in the exact same way as the Festo product catalogue contained in the software.

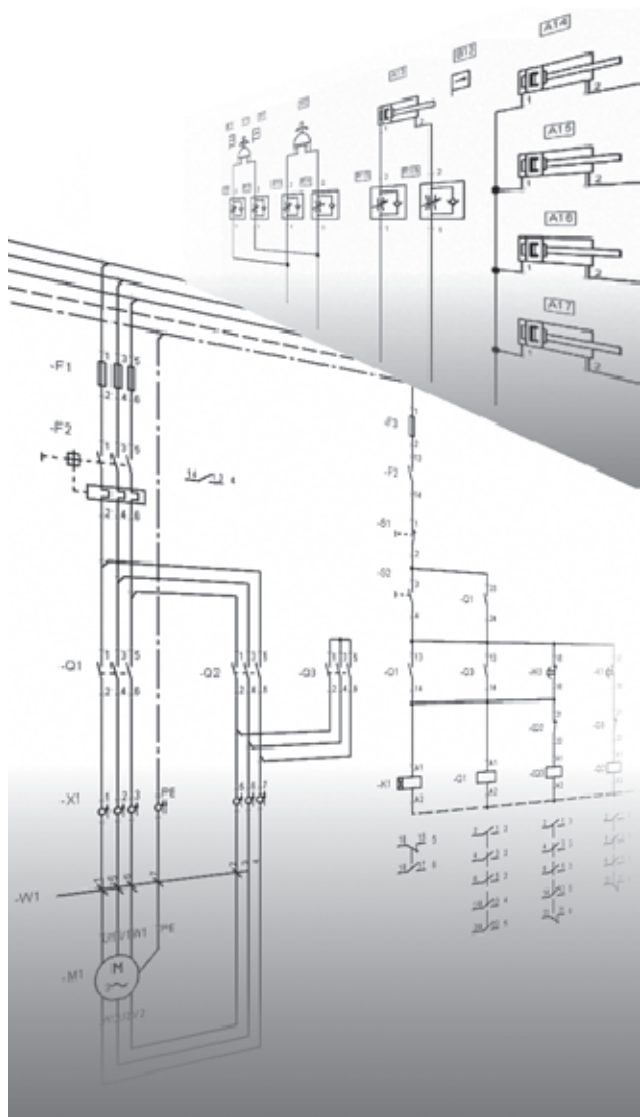
You can also independently create, maintain and use product databases directly in FluidDraw P5.

Multilingual documents

Translation tables enable the project documentation to be output in a wide range of languages. A simple interface allows language texts to be exported/imported.

You can also "collect" all the texts used in the project in a translation table.

Translation tables can also be created, maintained and used directly in FluidDraw P5.



Symbol libraries

As well as pneumatic symbols, the FluidDraw P5 symbol library also contains a large number of electrical symbols according to EN 60617.

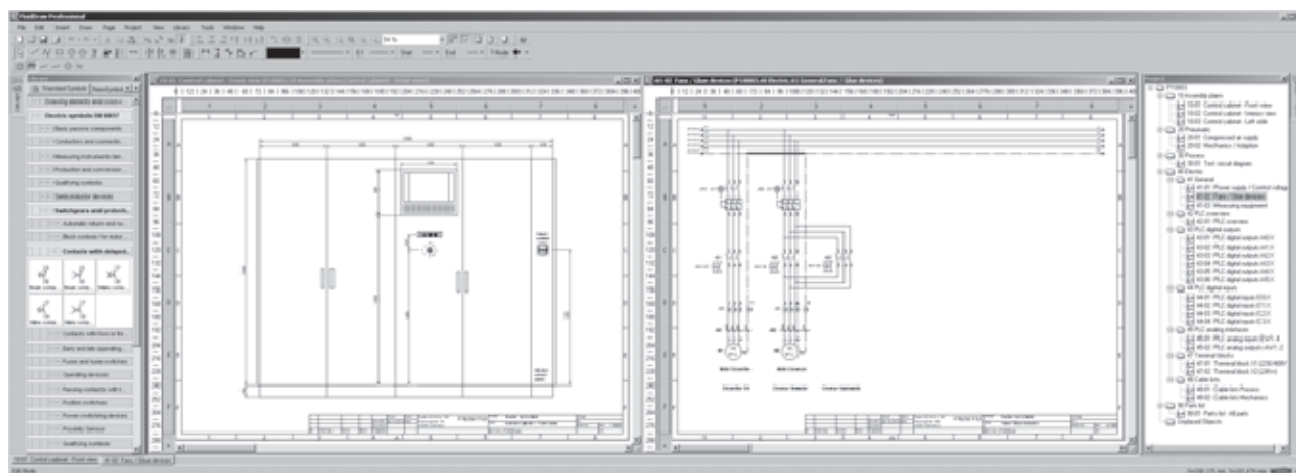
Standard symbols and macros as well as custom ones created in FluidDraw can be organised and used in user libraries.

Frequently used symbols are arranged in accordance with the function identifier according to EN 81346-2.

FluidDraw P5® software

Technical data

Complete circuit documentation made easy



FluidDraw P5 with symbol library, layout sketch of control cabinet, electrical circuit diagram and project tree

Electrical functions

The following functions for electrical circuits guarantee complete documentation:

- Contact images
- Termination points
- Terminals
- Cables (including "distributed" cables)
- Terminal diagram
- Cable diagram
- Cable list

These evaluation lists are updated each time the user performs an action.

When using valves, the associated electrical coils are collected in "unpositioned objects" so that no electrical connections are forgotten.

Import/export formats

Circuit (graphic):

- BMP, DXF, GIF, JPG, PDF, PNG, TIF, WMF

Parts lists, product data and language tables:

- TXT, CSV

Festo products:

- Offline basket (import)
- Product catalogue
- Online basket (export)

Licence

FluidDraw P5 licences are supplied on a USB licence dongle, optionally with 2 GB RAM or without RAM. Further licences for existing dongles are possible.

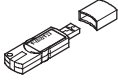
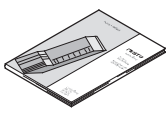
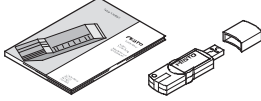
With U2 licence dongles without RAM, the customer must download and install software.

With U1 licence dongles with RAM, FluidDraw can be launched directly from the dongle without being installed – "Software-to-go".

Licences purchased in conjunction with a dongle are network licences. The number of licences determines how many times FluidDraw P5 can be used simultaneously in a network.

System requirements

Windows 2000/XP/VISTA/7
 ≥ 512MB RAM (2000/XP)
 ≥ 1 GB RAM (VISTA/7)
 USB interface

Ordering data				
	Designation	Scope of delivery	Part No.	Type
	Software	Software USB licence dongle with 2 GB RAM 1 network licence	570740	GSCW-U1-FD-P5-UN-1
	Manual	German manual	570746	GDCW-GSCW-FD-P5-DE
		English manual	570747	GDCW-GSCW-FD-P5-EN
	Software	Software USB licence dongle with 2 GB RAM 1 network licence German manual	570748	GSCW-SP-FD-P5-UN-1-DE

FluidDraw P5® software

Ordering data – Modular products

FESTO

Ordering table				
		Condition s	Code	Enter code
[M]	Module No.	571731		
	Function	Software	GSWF	GSWF
	Medium	Software package	-SP	
		USB licence dongle with 2 GB RAM	-U1	
		USB licence dongle	-U2	
	Application	FluidDraw	-FD	-FD
	Software type	Professional	-P	-P
	Software version	Version 5	5	5
	Licence protection	USB dongle	-U	-U
	Licence	Network licence	N	
	Number of licences	1 ... 99	[1] -...	
[O]	Manual language	None	-	
		German	[2] -DE	
		English	[2] -EN	

- [1] ... The number is always 1 with SP.
 [2] DE, EN Only in combination with SP, but then mandatory.

Transfer order code

571731 GSWF - SP - FD - P5 - UN - 1 - EN

Product Range and Company Overview

A Complete Suite of Automation Services

Our experienced engineers provide complete support at every stage of your development process, including: conceptualization, analysis, engineering, design, assembly, documentation, validation, and production.



Custom Automation Components
Complete custom engineered solutions



Custom Control Cabinets
Comprehensive engineering support and on-site services



Complete Systems
Shipment, stocking and storage services

The Broadest Range of Automation Components

With a comprehensive line of more than 30,000 automation components, Festo is capable of solving the most complex automation requirements.



Electromechanical
Electromechanical actuators, motors, controllers & drives



Pneumatics
Pneumatic linear and rotary actuators, valves, and air supply



PLCs and I/O Devices
PLC's, operator interfaces, sensors and I/O devices

Supporting Advanced Automation... As No One Else Can!

Festo is a leading global manufacturer of pneumatic and electromechanical systems, components and controls for industrial automation, with more than 12,000 employees in 56 national headquarters serving more than 180 countries. For more than 80 years, Festo has continuously elevated the state of manufacturing with innovations and optimized motion control solutions that deliver higher performing, more profitable automated manufacturing and processing equipment. Our dedication to the advancement of automation extends beyond technology to the education and development of current and future automation and robotics designers with simulation tools, teaching programs, and on-site services.

Quality Assurance, ISO 9001 and ISO 14001 Certifications

Festo Corporation is committed to supply all Festo products and services that will meet or exceed our customers' requirements in product quality, delivery, customer service and satisfaction.

To meet this commitment, we strive to ensure a consistent, integrated, and systematic approach to management that will meet or exceed the requirements of the ISO 9001 standard for Quality Management and the ISO 14001 standard for Environmental Management.



© Copyright 2008, Festo Corporation. While every effort is made to ensure that all dimensions and specifications are correct, Festo cannot guarantee that publications are completely free of any error, in particular typing or printing errors. Accordingly, Festo cannot be held responsible for the same. For Liability and Warranty conditions, refer to our "Terms and Conditions of Sale", available from your local Festo office. All rights reserved. No part of this publication may be reproduced, distributed, or transmitted in any form or by any means, electronic, mechanical, photocopying or otherwise, without the prior written permission of Festo. All technical data subject to change according to technical update.



Printed on recycled paper at New Horizon Graphic, Inc., FSC certified as an environmentally friendly printing plant.

Festo North America

Festo Regional Contact Center

5300 Explorer Drive
Mississauga, Ontario L4W 5G4
Canada

USA Customers:

For ordering assistance,

Call: 1.800.99.FESTO (1.800.993.3786)

Fax: 1.800.96.FESTO (1.800.963.3786)

Email: customer.service@us.festo.com

For technical support,

Call: 1.866.GO.FESTO (1.866.463.3786)

Fax: 1.800.96.FESTO (1.800.963.3786)

Email: product.support@us.festo.com

Canadian Customers:

Call: 1.877.GO.FESTO (1.877.463.3786)

Fax: 1.877.FX.FESTO (1.877.393.3786)

Email: festo.canada@ca.festo.com

USA Headquarters

Festo Corporation
395 Moreland Road
P.O. Box 18023
Hauppauge, NY 11788, USA
www.festo.com/us

USA Sales Offices

Appleton

North 922 Tower View Drive, Suite N
Greenville, WI 54942, USA

Boston

120 Presidential Way, Suite 330
Woburn, MA 01801, USA

Chicago

1441 East Business Center Drive
Mt. Prospect, IL 60056, USA

Dallas

1825 Lakeway Drive, Suite 600
Lewisville, TX 75057, USA

Detroit – Automotive Engineering Center

2601 Cambridge Court, Suite 320
Auburn Hills, MI 48326, USA

New York

395 Moreland Road
Hauppauge, NY 11788, USA

Silicon Valley

4935 Southfront Road, Suite F
Livermore, CA 94550, USA

United States



USA Headquarters, East: Festo Corp., 395 Moreland Road, Hauppauge, NY 11788

Phone: 1.631.435.0800; Fax: 1.631.435.8026;

Email: info@festo-usa.com

www.festo.com/us

Canada



Headquarters: Festo Inc., 5300 Explorer Drive, Mississauga, Ontario L4W 5G4

Phone: 1.905.624.9000; Fax: 1.905.624.9001;

Email: festo.canada@ca.festo.com

www.festo.ca

Mexico



Headquarters: Festo Pneumatic, S.A., Av. Ceylán 3, Col. Tequesquahuac,
54020 Tlalneapantla, Edo. de México

Phone: 011 52 [55] 53 21 66 00; Fax: 011 52 [55] 53 21 66 65;

Email: festo.mexico@mx.festo.com

www.festo.com/mx

Central USA

Festo Corporation
1441 East Business
Center Drive
Mt. Prospect, IL 60056, USA
Phone: 1.847.759.2600
Fax: 1.847.768.9480



Western USA

Festo Corporation
4935 Southfront Road,
Suite F
Livermore, CA 94550, USA
Phone: 1.925.371.1099
Fax: 1.925.245.1286



Festo Worldwide

Argentina Australia Austria Belarus Belgium Brazil Bulgaria Canada Chile China Colombia Croatia Czech Republic Denmark
Estonia Finland France Germany Great Britain Greece Hong Kong Hungary India Indonesia Iran Ireland Israel Italy Japan Latvia
Lithuania Malaysia Mexico Netherlands New Zealand Norway Peru Philippines Poland Romania Russia Serbia Singapore
Slovakia Slovenia South Africa South Korea Spain Sweden Switzerland Taiwan Thailand Turkey Ukraine United States Venezuela

www.festo.com