

Rotary distributors GF

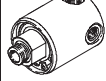
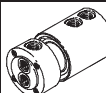
FESTO



Rotary distributors GF

Product range overview

FESTO

Design	Version	Type	Connection D1	Connection D2	Max. speed	→ Page/ Internet
				Outlet	[rpm]	
Simple	4 outlets					
		GF	G1/8	M5	3000	4
			G1/4	G1/8		
			G1/2	G1/4	2500	
Multiple	2 axial and radial outlets					
		GF	G1/8	G1/8	300	5
			G1/4	G1/4		
			G1/2	G1/2		

Rotary distributors GF

Type codes

FESTO

		GF	—	1/8	—	M5
Basic function						
GF	Rotary distributor, single					
Pneumatic connection						
1/8	Thread G1/8					
1/4	Thread G1/4					
1/2	Thread G1/2					
Pneumatic connection at outlets						
M5	Thread M5					
1/8	Thread G1/8					
1/4	Thread G1/4					

		GF	—	1/8	—	2
Basic function						
GF	Rotary distributor, multiple					
Pneumatic connection						
1/8	Thread G1/8					
1/4	Thread G1/4					
1/2	Thread G1/2					
Number of air throughfeeds						
2	Air throughfeed					

Rotary distributors GF

Technical data

FESTO

Rotary distributor GF, single
4 outlets

Temperature range
-10 ... +80 °C

Pressure
-0.95 ... +10 bar

Materials:
Housing: Brass
Shaft: High-alloy steel

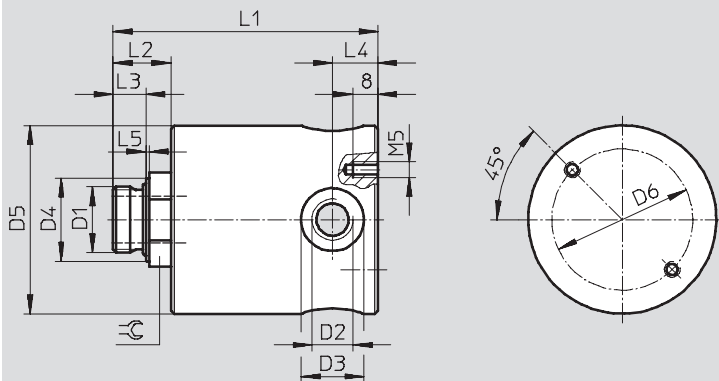


Technical data			
Pneumatic connection	G1/8	G1/4	G1/2
Operating medium	Filtered compressed air		
Standard flow rate 1 → 2.1 [l/min]	490	1730	4050
Standard flow rate 1 → 2.X [l/min]	2250	4050	14130
Operating pressure [bar]	-0.95 ... +10		
Ambient temperature [°C]	-10 ... +80		
Assembly position	Any		
Corrosion resistance class [CRC] ¹⁾	1		
Max. speed [rpm]	3000	3000	2500
Max. tightening torque [Nm]	10	15	40
Product weight [g]	400	370	1190

1) Corrosion resistance class 1 according to Festo standard 940 070
Components requiring low corrosion resistance. Transport and storage protection. Parts that do not have primarily decorative surface requirements, e.g. in internal areas that are not visible or behind covers.

Dimensions and ordering data

Download CAD data → www.festo.com



Pneumatic connection	Pneumatic connection at outlets	Nominal size	D3 Ø	D4 Ø	D5 Ø -1	D6 Ø	L1
D1	D2	[mm]					
G1/8	M5	6	9	14.5	40	30	64
G1/4	G1/8	8	16	17	40	30	65.5
G1/2	G1/4	15	20	26.5	60	45	90

Pneumatic connection	L2	L3	L4	L5	⌀	Part No.	Type
D1							
G1/8	15.5	6.5	7	1	17	539290	GF-1/8-M5
G1/4	17	8	9.5	1.5	17	539291	GF-1/4-1/8
G1/2	24	10.5	14.5	1.5	27	539292	GF-1/2-1/4

Rotary distributors GF

Technical data

FESTO

Rotary distributor GF, multiple
2 axial and radial outlets

Temperature range
-10 ... +80 °C

Pressure
-0.95 ... +10 bar

Materials:
Housing: Brass
Shaft: High-alloy steel

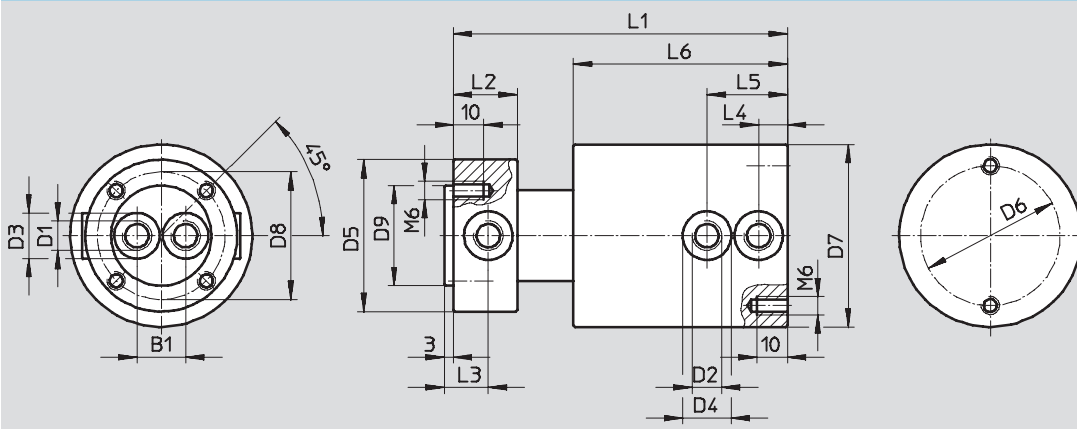


Technical data			
Pneumatic connection	G1/8	G1/4	G1/2
Operating medium	Filtered compressed air		
Standard flow rate 1.1 → 2.1 [l/min]	720	1250	4440
Standard flow rate 1.2 → 2.2 [l/min]	1050	2020	7380
Operating pressure [bar]	-0.95 ... +10		
Ambient temperature [°C]	-10 ... +80		
Assembly position	Any		
Corrosion resistance class [CRC] ¹⁾	1		
Max. speed [rpm]	300		
Max. tightening torque [Nm]	10	15	40
Product weight [g]	1770	2950	7380

1) Corrosion resistance class 1 according to Festo standard 940 070
Components requiring low corrosion resistance. Transport and storage protection. Parts that do not have primarily decorative surface requirements, e.g. in internal areas that are not visible or behind covers.

Dimensions and ordering data

Download CAD data → www.festo.com



Pneumatic connection	Pneumatic connection at outlets	Nominal size	B1	D3 Ø	D4 Ø	D5 Ø	D6 Ø	D7 Ø -1	D8 Ø
D1	D2	[mm]							
G1/8	G1/8	4.1	16	15	16	50	46	60	42
G1/4	G1/4	8	20	19	20	65	46	70	50
G1/2	G1/2	12.75	30	28	28	90	65	95	78

Pneumatic connection	D9 Ø f7	L1	L2	L3	L4	L5	L6	Part No.	Type
D1									
G1/8	33	113	21	14.5	9.5	26.5	70.5	539287	GF-1/8-2
G1/4	40	131	28	19.5	13.5	34.5	81.5	539288	GF-1/4-2
G1/2	65	174	39	25.5	17.5	49.5	112	539289	GF-1/2-2

Product Range and Company Overview

A Complete Suite of Automation Services

Our experienced engineers provide complete support at every stage of your development process, including: conceptualization, analysis, engineering, design, assembly, documentation, validation, and production.



Custom Automation Components
Complete custom engineered solutions



Custom Control Cabinets
Comprehensive engineering support and on-site services



Complete Systems
Shipment, stocking and storage services

The Broadest Range of Automation Components

With a comprehensive line of more than 30,000 automation components, Festo is capable of solving the most complex automation requirements.



Electromechanical
Electromechanical actuators, motors, controllers & drives



Pneumatics
Pneumatic linear and rotary actuators, valves, and air supply



PLCs and I/O Devices
PLC's, operator interfaces, sensors and I/O devices

Supporting Advanced Automation... As No One Else Can!

Festo is a leading global manufacturer of pneumatic and electromechanical systems, components and controls for industrial automation, with more than 12,000 employees in 56 national headquarters serving more than 180 countries. For more than 80 years, Festo has continuously elevated the state of manufacturing with innovations and optimized motion control solutions that deliver higher performing, more profitable automated manufacturing and processing equipment. Our dedication to the advancement of automation extends beyond technology to the education and development of current and future automation and robotics designers with simulation tools, teaching programs, and on-site services.

Quality Assurance, ISO 9001 and ISO 14001 Certifications

Festo Corporation is committed to supply all Festo products and services that will meet or exceed our customers' requirements in product quality, delivery, customer service and satisfaction.

To meet this commitment, we strive to ensure a consistent, integrated, and systematic approach to management that will meet or exceed the requirements of the ISO 9001 standard for Quality Management and the ISO 14001 standard for Environmental Management.



© Copyright 2008, Festo Corporation. While every effort is made to ensure that all dimensions and specifications are correct, Festo cannot guarantee that publications are completely free of any error, in particular typing or printing errors. Accordingly, Festo cannot be held responsible for the same. For Liability and Warranty conditions, refer to our "Terms and Conditions of Sale", available from your local Festo office. All rights reserved. No part of this publication may be reproduced, distributed, or transmitted in any form or by any means, electronic, mechanical, photocopying or otherwise, without the prior written permission of Festo. All technical data subject to change according to technical update.



Printed on recycled paper at New Horizon Graphic, Inc., FSC certified as an environmentally friendly printing plant.

Festo North America

Festo Regional Contact Center

5300 Explorer Drive
Mississauga, Ontario L4W 5G4
Canada

USA Customers:

For ordering assistance,

Call: 1.800.99.FESTO (1.800.993.3786)

Fax: 1.800.96.FESTO (1.800.963.3786)

Email: customer.service@us.festo.com

For technical support,

Call: 1.866.GO.FESTO (1.866.463.3786)

Fax: 1.800.96.FESTO (1.800.963.3786)

Email: product.support@us.festo.com

Canadian Customers:

Call: 1.877.GO.FESTO (1.877.463.3786)

Fax: 1.877.FX.FESTO (1.877.393.3786)

Email: festo.canada@ca.festo.com

USA Headquarters

Festo Corporation
395 Moreland Road
P.O. Box 18023
Hauppauge, NY 11788, USA
www.festo.com/us

USA Sales Offices

Appleton

North 922 Tower View Drive, Suite N
Greenville, WI 54942, USA

Boston

120 Presidential Way, Suite 330
Woburn, MA 01801, USA

Chicago

1441 East Business Center Drive
Mt. Prospect, IL 60056, USA

Dallas

1825 Lakeway Drive, Suite 600
Lewisville, TX 75057, USA

Detroit – Automotive Engineering Center

2601 Cambridge Court, Suite 320
Auburn Hills, MI 48326, USA

New York

395 Moreland Road
Hauppauge, NY 11788, USA

Silicon Valley

4935 Southfront Road, Suite F
Livermore, CA 94550, USA

United States



USA Headquarters, East: Festo Corp., 395 Moreland Road, Hauppauge, NY 11788

Phone: 1.631.435.0800; Fax: 1.631.435.8026;

Email: info@festo-usa.com

www.festo.com/us

Canada



Headquarters: Festo Inc., 5300 Explorer Drive, Mississauga, Ontario L4W 5G4

Phone: 1.905.624.9000; Fax: 1.905.624.9001;

Email: festo.canada@ca.festo.com

www.festo.ca

Mexico



Headquarters: Festo Pneumatic, S.A., Av. Ceylán 3, Col. Tequesquahuac,
54020 Tlalneapantla, Edo. de México

Phone: 011 52 [55] 53 21 66 00; Fax: 011 52 [55] 53 21 66 65;

Email: festo.mexico@mx.festo.com

www.festo.com/mx

Central USA

Festo Corporation
1441 East Business
Center Drive
Mt. Prospect, IL 60056, USA
Phone: 1.847.759.2600
Fax: 1.847.768.9480



Western USA

Festo Corporation
4935 Southfront Road,
Suite F
Livermore, CA 94550, USA
Phone: 1.925.371.1099
Fax: 1.925.245.1286



Festo Worldwide

Argentina Australia Austria Belarus Belgium Brazil Bulgaria Canada Chile China Colombia Croatia Czech Republic Denmark
Estonia Finland France Germany Great Britain Greece Hong Kong Hungary India Indonesia Iran Ireland Israel Italy Japan Latvia
Lithuania Malaysia Mexico Netherlands New Zealand Norway Peru Philippines Poland Romania Russia Serbia Singapore
Slovakia Slovenia South Africa South Korea Spain Sweden Switzerland Taiwan Thailand Turkey Ukraine United States Venezuela

www.festo.com