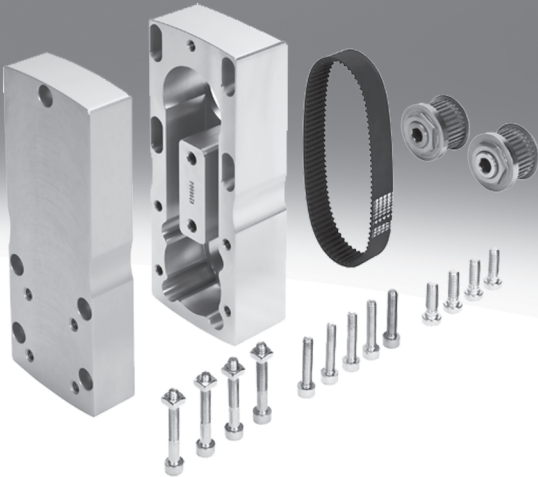


# Parallel kits EAMM-U



# Parallel kits EAMM-U

Key features

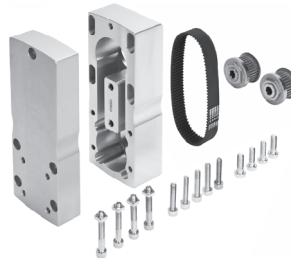
## At a glance

### Parallel kits EAMM-U



- Space-saving gravity die-cast housing

### Parallel kits EAMM-U



- Increased housing rigidity
- More flexible motor connection possible
- Optionally with protection to IP65
- Use in combination with third-party motors on request

### Counter bearing EAMG

The counter bearing cannot be used in combination with this parallel kit.

### Counter bearing EAMG

→ 17



The counter bearing in combination with the additional clamping sleeve EAMH-...-P enables axis or motor shafts to be braced by means of a needle roller bearing against the transverse forces generated by a toothed belt.

### Clamping sleeve EAMH-...-P

The clamping sleeve cannot be used in combination with this parallel kit.

### Clamping sleeve EAMH-...-P

→ 17



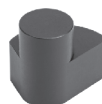
To retrofit the counter bearing, the clamping sleeve without trunnion contained as standard in the parallel kit must be replaced by the clamping sleeve EAMH-...-P with integrated trunnion.

### Clamping component EADT

The clamping component cannot be used in combination with this parallel kit.

### Clamping component EADT

→ 18

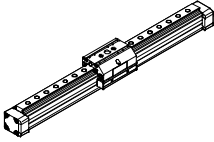


For adjusting the toothed belt pretension with EAMM-U-110 and EAMM-U-145. The motor is pushed away from the axis mechanism by turning the clamping component secured in a hole in the housing (the motor can be moved in a slot for this purpose). This enables high toothed belt pretension forces to be generated with low torques at the clamping component.

# Parallel kits EAMM-U

Product range overview

## Permissible axis/motor combinations with spindle axis DGE-SP



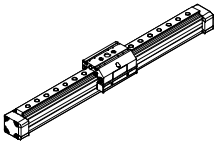
### Properties of the kits

- Space-saving gravity die-cast housing



Motor Type	Parallel kit	
	Part No.	Type
<b>DGE-25</b>		
With servo motor		
EMMS-AS-55-...	543230	EAMM-U-E32-55A
With motor unit		
MTR-DCI-42S-...-G07	543228	EAMM-U-E32-42B
MTR-DCI-42S-...-G14	543229	EAMM-U-E32-42C
<b>DGE-40</b>		
With servo motor		
EMMS-AS-70-...	543234	EAMM-U-E48-70A
With motor unit		
MTR-DCI-52S-...-G07	543232	EAMM-U-E48-52B
MTR-DCI-52S-...-G14	543233	EAMM-U-E48-52C

## Permissible axis/motor combinations with positioning axis DMES



### Properties of the kits

- Space-saving gravity die-cast housing



Motor Type	Parallel kit	
	Part No.	Type
<b>DMES-18</b>		
With servo motor		
EMMS-AS-40-...	543226	EAMM-U-E24-40A
With motor unit		
MTR-DCI-32S-...	543225	EAMM-U-E24-32B
<b>DMES-25</b>		
With servo motor		
EMMS-AS-55-...	543230	EAMM-U-E32-55A
With motor unit		
MTR-DCI-42S-...-G7	543228	EAMM-U-E32-42B
MTR-DCI-42S-...-G14	543229	EAMM-U-E32-42C
<b>DMES-40</b>		
With servo motor		
EMMS-AS-70-...	543234	EAMM-U-E48-70A
With motor unit		
MTR-DCI-52S-...-G7	543232	EAMM-U-E48-52B
MTR-DCI-52S-...-G14	543233	EAMM-U-E48-52C

### Note

At ambient temperatures below room temperature, the frictional torques increase in the case of the DMES-...-GF (plain-bearing guide).

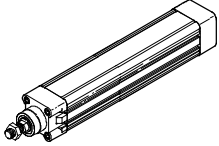
The maximum feed force of the axis may not be reached depending on the combination of motor/motor unit and positioning axis.

The respective no-load driving torque of the kit must be taken into consideration when using parallel kits.

# Parallel kits EAMM-U

Product range overview

## Permissible axis/motor combinations with electric cylinder DNCE



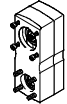
### Properties of the kits

- Space-saving gravity die-cast housing



### Properties of the kits

- Increased housing rigidity
- More flexible motor connection possible
- Optionally with protection to IP65
- Use in combination with third-party motors on request



Motor	Parallel kit	
Type	Part No.	Type
<b>DNCE-32</b>		
With servo motor		
EMMS-AS-40-...	543150	EAMM-U-D32-40A
With motor unit		
MTR-DCI-32S-...	543152	EAMM-U-D32-32B
<b>DNCE-40</b>		
With servo motor		
EMMS-AS-55-...	543157	EAMM-U-D40-55A
With motor unit		
MTR-DCI-42S-...-G7	543159	EAMM-U-D40-42B
MTR-DCI-42S-...-G14	543160	EAMM-U-D40-42C
<b>DNCE-63</b>		
With servo motor		
EMMS-AS-70-...	543165	EAMM-U-D60-70A
With motor unit		
MTR-DCI-52S-...-G7	543167	EAMM-U-D60-52B
MTR-DCI-52S-...-G14	543168	EAMM-U-D60-52C

Motor	Parallel kit	
Type	Part No.	Type
<b>DNCE-32</b>		
With servo motor		
EMMS-AS-40-...	1201591	EAMM-U-50-D32-40A-78
	1202302	EAMM-U-50-D32-40A-78-S1 <sup>1)</sup>
EMMS-AS-55-...	1210126	EAMM-U-60-D32-55A-91
	1210450	EAMM-U-60-D32-55A-91-S1 <sup>1)</sup>
With stepper motor		
EMMS-ST-42-...	1201607	EAMM-U-50-D32-42A-78
	1202312	EAMM-U-50-D32-42A-78-S1 <sup>1)</sup>
EMMS-ST-57-...	1210419	EAMM-U-60-D32-57A-91
	1210453	EAMM-U-60-D32-57A-91-S1 <sup>1)</sup>
<b>DNCE-40</b>		
With servo motor		
EMMS-AS-55-...	1210438	EAMM-U-60-D40-55A-91
	1210458	EAMM-U-60-D40-55A-91-S1 <sup>1)</sup>
EMMS-AS-70-...	1212826	EAMM-U-86-D40-70A-102
	1212854	EAMM-U-86-D40-70A-102-S1 <sup>1)</sup>
With stepper motor		
EMMS-ST-57-...	1210442	EAMM-U-60-D40-57A-91
	1210462	EAMM-U-60-D40-57A-91-S1 <sup>1)</sup>
EMMS-ST-87-...	1215802	EAMM-U-86-D40-87A-102
	1215814	EAMM-U-86-D40-87A-102-S1 <sup>1)</sup>
<b>DNCE-63</b>		
With servo motor		
EMMS-AS-70-...	1212477	EAMM-U-86-D60-70A-102
	1212835	EAMM-U-86-D60-70A-102-S1 <sup>1)</sup>
EMMS-AS-100-...	1202436	EAMM-U-110-D60-100A-120
	1203112	EAMM-U-110-D60-100A-120-S1 <sup>1)</sup>
With stepper motor		
EMMS-ST-87-...	1215784	EAMM-U-86-D60-87A-102
	1215810	EAMM-U-86-D60-87A-102-S1 <sup>1)</sup>

1) With protection class IP65



Note

The motor unit MTR-DCI may only be used in combination with the electric cylinder DNCE-...-LS (lead screw).

The maximum feed force of the cylinder may not be reached depending on the combination of motor/motor unit and electric cylinder.

The respective no-load driving torque of the kit must be taken into consideration when using parallel kits.



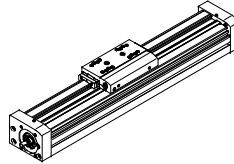
Note

Clamping component EADT for adjusting the toothed belt pretension with EAMM-U-110 → 18

# Parallel kits EAMM-U

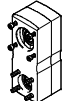
Product range overview

## Permissible axis/motor combinations with spindle axis EGC-BS



### Properties of the kits

- Increased housing rigidity
- More flexible motor connection possible
- Use in combination with third-party motors on request



Motor	Parallel kit	
Type	Part No.	Type
<b>EGC-70-...-BS</b>		
With servo motor		
EMMS-AS-40-...	1217708	EAMM-U-50-S38-40A-78
EMMS-AS-55-...	1218538	EAMM-U-60-S38-55A-91
With stepper motor		
EMMS-ST-42-...	1217945	EAMM-U-50-S38-42A-78
EMMS-ST-57-...	1218568	EAMM-U-60-S38-57A-91
<b>EGC-80-...-BS</b>		
With servo motor		
EMMS-AS-55-...	1219370	EAMM-U-60-S48-55A-91
EMMS-AS-70-...	1217689	EAMM-U-86-S48-70A-102
With stepper motor		
EMMS-ST-57-...	1219379	EAMM-U-60-S48-57A-91
EMMS-ST-87-...	1217604	EAMM-U-86-S48-87A-177
<b>EGC-120-...-BS</b>		
With servo motor		
EMMS-AS-70-...	1217543	EAMM-U-86-S62-70A-177
EMMS-AS-100-...	1217381	EAMM-U-110-S62-100A-207
EMMS-AS-140-...	1219440	EAMM-U-145-S62-140A-288
With stepper motor		
EMMS-ST-87-...	1217373	EAMM-U-86-S62-87A-177
<b>EGC-185-...-BS</b>		
With servo motor		
EMMS-AS-100-...	1220656	EAMM-U-110-S95-100A-207
EMMS-AS-140-...	1220582	EAMM-U-145-S95-140A-288

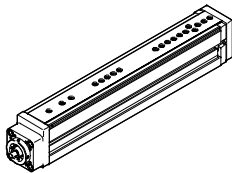
-  - Note

Clamping component EADT for adjusting the toothed belt pretension with EAMM-U-110 and EAMM-U-145 → 18

# Parallel kits EAMM-U

Product range overview

## Permissible axis/motor combinations with mini slide EGSL



### Properties of the kits

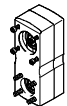
- Space-saving gravity die-cast housing



Motor	Parallel kit	
Type	Part No.	Type
<b>EGSL-45</b>		
With servo motor		
EMMS-AS-40-...	543150	EAMM-U-D32-40A
<b>EGSL-55</b>		
With servo motor		
EMMS-AS-55-...	543157	EAMM-U-D40-55A
<b>EGSL-75</b>		
With servo motor		
EMMS-AS-70-...	543165	EAMM-U-D60-70A

### Properties of the kits

- Increased housing rigidity
- More flexible motor connection possible
- Use in combination with third-party motors on request



Motor	Parallel kit	
Type	Part No.	Type
<b>EGSL-45</b>		
With servo motor		
EMMS-AS-40-...	1201591	EAMM-U-50-D32-40A-78
EMMS-AS-55-...	1210126	EAMM-U-60-D32-55A-91
With stepper motor		
EMMS-ST-42-...	1201607	EAMM-U-50-D32-42A-78
EMMS-ST-57-...	1210419	EAMM-U-60-D32-57A-91
<b>EGSL-55</b>		
With servo motor		
EMMS-AS-55-...	1210438	EAMM-U-60-D40-55A-91
EMMS-AS-70-...	1212826	EAMM-U-86-D40-70A-102
With stepper motor		
EMMS-ST-57-...	1210442	EAMM-U-60-D40-57A-91
EMMS-ST-87-...	1215802	EAMM-U-86-D40-87A-102
<b>EGSL-75</b>		
With servo motor		
EMMS-AS-70-...	1212477	EAMM-U-86-D60-70A-102
EMMS-AS-100-...	1202436	EAMM-U-110-D60-100A-120
With stepper motor		
EMMS-ST-87-...	1215784	EAMM-U-86-D60-87A-102

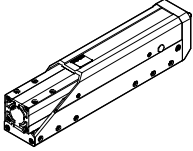
-  - Note

Clamping component EADT for adjusting the toothed belt pretension with EAMM-U-110 → 18

# Parallel kits EAMM-U

Product range overview

## Permissible axis/motor combinations with cantilever axis EGSA



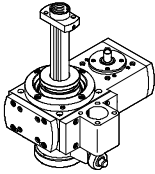
### Properties of the kits

- Space-saving machined housing



Motor	Parallel kit	
Type	Part No.	Type
<b>EGSA-50</b>		
With servo motor		
EMMS-AS-40-...	559785	EAMM-U-A19-40A
<b>EGSA-60</b>		
With servo motor		
EMMS-AS-55-...	559786	EAMM-U-A22-55A
EMMS-AS-70-...	559787	EAMM-U-A22-70A

## Permissible axis/motor combinations with rotary/lifting module EHMB



### Properties of the kits

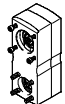
- Space-saving gravity die-cast housing



Motor	Parallel kit	
Type	Part No.	Type
<b>EHMB-20/-25 with DNCE-32</b>		
With servo motor		
EMMS-AS-40-...	543150	EAMM-U-D32-40A
With motor unit		
MTR-DCI-32S-...	543152	EAMM-U-D32-32B
<b>EHMB-32 with DNCE-40</b>		
With servo motor		
EMMS-AS-55-...	543157	EAMM-U-D40-55A
With motor unit		
MTR-DCI-42S-...-G7	543159	EAMM-U-D40-42B
MTR-DCI-42S-...-G14	543160	EAMM-U-D40-42C

### Properties of the kits

- Increased housing rigidity
- More flexible motor connection possible
- Use in combination with third-party motors on request



Motor	Parallel kit	
Type	Part No.	Type
<b>EHMB-20/-25 with DNCE-32</b>		
With servo motor		
EMMS-AS-40-...	1201591	EAMM-U-50-D32-40A-78
EMMS-AS-55-...	1210126	EAMM-U-60-D32-55A-91
With stepper motor		
EMMS-ST-42-...	1201607	EAMM-U-50-D32-42A-78
EMMS-ST-57-...	1210419	EAMM-U-60-D32-57A-91
<b>EHMB-32 with DNCE-40</b>		
With servo motor		
EMMS-AS-55-...	1210438	EAMM-U-60-D40-55A-91
EMMS-AS-70-...	1212826	EAMM-U-86-D40-70A-102
With stepper motor		
EMMS-ST-57-...	1210442	EAMM-U-60-D40-57A-91
EMMS-ST-87-...	1215802	EAMM-U-86-D40-87A-102

-  - Note

The motor unit MTR-DCI may only be used in combination with the electric cylinder DNCE-...-LS (lead screw).

The maximum feed force of the cylinder may not be reached depending on the combination of motor/motor unit and electric cylinder.

# Parallel kits EAMM-U

Type codes

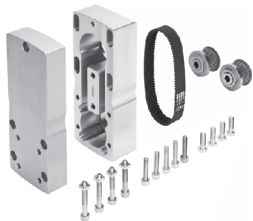
## Properties of the kits



- Space-saving gravity die-cast housing

EAMM	U	D32	40A
<b>Type</b>			
EAMM	Kit		
<b>Motor configuration</b>			
U	Parallel		
<b>Axis mechanism interface</b>			
<b>Motor interface</b>			

## Properties of the kits



- Increased housing rigidity
- More flexible motor connection possible
- Optionally with protection to IP65
- Use in combination with third-party motors on request

EAMM	U	50	D32	40A	78	
<b>Type</b>						
EAMM	Kit					
<b>Motor configuration</b>						
U	Parallel					
<b>Size</b>						
<b>Axis mechanism interface</b>						
<b>Motor interface</b>						
<b>Centre distance</b>						
<b>Special design</b>						
S1	Protection class IP65					



# Parallel kits EAMM-U

## Technical data

### Properties:

- Space-saving gravity die-cast housing

### Materials:

Housing: Gravity die-cast aluminium  
 Clamping component, clamping sleeve, toothed belt pulley: Corrosion-resistant steel  
 Toothed belt: Polychloroprene  
 Screws: Galvanised steel



General technical data								
Type	For axis	Transferable torque [Nm]	Mass moment of inertia [kgmm <sup>2</sup> ]	Max. rotational speed [rpm]	No-load driving torque [Nm]	Weight [g]	Protection class <sup>1)</sup>	→ Page
EAMM-U-A19-40A	EGSA	1	2.87	6,000	0.05	270	IP40	16
EAMM-U-A22-55A	EGSA	3	9.63	4,000	0.1	410	IP40	
EAMM-U-A22-70A	EGSA	5.5	10.1	4,000	0.2	540	IP40	
EAMM-U-D32-32B	DNCE	1	2.93	6,000	0.05	300	IP40	13
EAMM-U-D32-40A	DNCE, EGSL	1	2.93	6,000	0.05	300	IP40	
EAMM-U-D40-42B	DNCE	3	10.0	5,000	0.1	660	IP40	
EAMM-U-D40-42C	DNCE	3	10.0	5,000	0.1	690	IP40	
EAMM-U-D40-55A	DNCE, EGSL	3	10.0	5,000	0.1	530	IP40	
EAMM-U-D60-52B	DNCE	5.5	70.5	4,000	0.3	1,530	IP40	
EAMM-U-D60-52C	DNCE	5.5	70.5	4,000	0.3	1,630	IP40	
EAMM-U-D60-70A	DNCE, EGSL	5.5	70.5	4,000	0.3	1,170	IP40	
EAMM-U-E24-32B	DMES	1	3.02	3,000	0.05	240	IP40	
EAMM-U-E24-40A	DMES	1	3.02	3,000	0.05	240	IP40	
EAMM-U-E32-42B	DGE-SP, DMES	3	10.2	3,000	0.1	660	IP40	
EAMM-U-E32-42C	DGE-SP, DMES	3	10.2	3,000	0.1	690	IP40	
EAMM-U-E32-55A	DGE-SP, DMES	3	10.2	3,000	0.1	540	IP40	
EAMM-U-E48-52B	DGE-SP, DMES	5.5	71.1	3,000	0.3	1,700	IP40	
EAMM-U-E48-52C	DGE-SP, DMES	5.5	71.1	3,000	0.3	1,800	IP40	
EAMM-U-E48-70A	DGE-SP, DMES	5.5	71.1	3,000	0.3	1,300	IP40	

1) Only in combination with attached motor and axis.

Operating and environmental conditions		
Ambient temperature	[°C]	0 ... +50
Storage temperature	[°C]	-25 ... +60
Relative air humidity	[%]	0 ... 95
Corrosion resistance class CRC <sup>2)</sup>		1
Note on materials		Contains PWIS (paint-wetting impairment substances) RoHS-compliant

2) Corrosion resistance class 1 according to Festo standard 940 070  
 Components subject to low corrosion stress. Transport and storage protection. Parts that do not have primarily decorative surface requirements, e.g. in internal areas that are not visible or behind covers.

# Parallel kits EAMM-U

Technical data

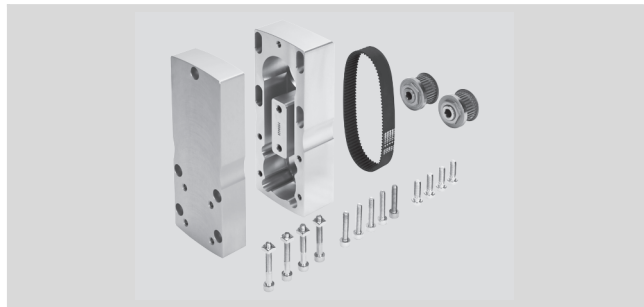


**Properties:**

- Increased housing rigidity
- More flexible motor connection possible
- Optionally with protection to IP65
- Use in combination with third-party motors on request

**Materials:**

Housing: Wrought aluminium alloy  
 Clamping component, clamping sleeve, toothed belt pulley: Corrosion-resistant steel  
 Toothed belt: Polychloroprene  
 Screws: Galvanised steel



General technical data									
Type	For axis	Transferable torque [Nm]	Mass moment of inertia [kgmm <sup>2</sup> ]	Max. rotational speed [rpm]	No-load driving torque [Nm]	Weight [g]	Protection class <sup>1)</sup>	→ Page	
EAMM-U-50-D32-40A-78	DNCE, EGSL	1	12.1	6,000	0.01	600	IP40	14	
EAMM-U-50-D32-40A-78-S1	DNCE	1	12.1	6,000	0.01	620	IP65		
EAMM-U-50-D32-42A-78	DNCE, EGSL	1	12.1	6,000	0.01	610	IP40		
EAMM-U-50-D32-42A-78-S1	DNCE	1	12.1	6,000	0.01	630	IP65		
EAMM-U-50-S38-40A-78	EGC-BS	1	12.1	6,000	0.01	580	IP40	15	
EAMM-U-50-S38-42A-78	EGC-BS	1	12.1	6,000	0.01	590	IP40		
EAMM-U-60-D32-55A-91	DNCE, EGSL	3	26.7	6,000	0.07	1,050	IP40	14	
EAMM-U-60-D32-55A-91-S1	DNCE	3	26.7	6,000	0.07	1,100	IP65		
EAMM-U-60-D32-57A-91	DNCE, EGSL	3	26.7	6,000	0.07	1,160	IP40		
EAMM-U-60-D32-57A-91-S1	DNCE	3	26.7	6,000	0.07	1,190	IP65		
EAMM-U-60-D40-55A-91	DNCE, EGSL	3	26.7	6,000	0.07	1,040	IP40		
EAMM-U-60-D40-55A-91-S1	DNCE	3	26.7	6,000	0.07	1,080	IP65		
EAMM-U-60-D40-57A-91	DNCE, EGSL	3	26.7	6,000	0.07	1,140	IP40		
EAMM-U-60-D40-57A-91-S1	DNCE	3	26.7	6,000	0.07	1,170	IP65		
EAMM-U-60-S38-55A-91	EGC-BS	3	26.7	6,000	0.07	990	IP40		15
EAMM-U-60-S38-57A-91	EGC-BS	3	26.7	6,000	0.07	1,090	IP40		
EAMM-U-60-S48-55A-91	EGC-BS	3	26.7	6,000	0.07	1,060	IP40		
EAMM-U-60-S48-57A-91	EGC-BS	3	26.7	6,000	0.07	1,160	IP40		
EAMM-U-86-D40-70A-102	DNCE, EGSL	9.5	175	5,000	0.25	2,450	IP40	14	
EAMM-U-86-D40-70A-102-S1	DNCE	9.5	175	5,000	0.25	2,460	IP65		
EAMM-U-86-D40-87A-102	DNCE, EGSL	9.5	175	5,000	0.25	2,510	IP40		
EAMM-U-86-D40-87A-102-S1	DNCE	9.5	175	5,000	0.25	2,530	IP65		
EAMM-U-86-D60-70A-102	DNCE, EGSL	9.5	175	5,000	0.25	2,440	IP40		
EAMM-U-86-D60-70A-102-S1	DNCE	9.5	175	5,000	0.25	2,460	IP65		
EAMM-U-86-D60-87A-102	DNCE, EGSL	9.5	175	5,000	0.25	2,510	IP40		
EAMM-U-86-D60-87A-102-S1	DNCE	9.5	175	5,000	0.25	2,520	IP65		
EAMM-U-86-S48-70A-102	EGC-BS	9.5	175	5,000	0.25	2,440	IP40		15
EAMM-U-86-S48-87A-177	EGC-BS	9.5	175	5,000	0.25	3,270	IP40		
EAMM-U-86-S62-70A-177	EGC-BS	9.5	175	5,000	0.25	3,270	IP40		
EAMM-U-86-S62-87A-177	EGC-BS	9.5	175	5,000	0.25	3,330	IP40		

1) Only in combination with attached motor and axis.

# Parallel kits EAMM-U

Technical data

General technical data								
Type	For axis	Transferable torque [Nm]	Mass moment of inertia [kgmm <sup>2</sup> ]	Max. rotational speed [rpm]	No-load driving torque [Nm]	Weight [g]	Protection class <sup>1)</sup>	→ Page
EAMM-U-110-D60-100A-120	DNCE, EGSL	25	799	5,000	0.3	4,950	IP40	14
EAMM-U-110-D60-100A-120-S1	DNCE	25	799	5,000	0.3	5,020	IP65	
EAMM-U-110-S62-100A-207	EGC-BS	25	799	5,000	0.3	6,900	IP40	15
EAMM-U-110-S95-100A-207	EGC-BS	25	799	5,000	0.3	6,810	IP40	
EAMM-U-145-S62-140A-288	EGC-BS	50	2,270	4,000	2.0	15,030	IP40	
EAMM-U-145-S95-140A-288	EGC-BS	50	2,270	4,000	2.0	14,850	IP40	

1) Only in combination with attached motor and axis

Operating and environmental conditions		
Ambient temperature	[°C]	-10 ... +60
Storage temperature	[°C]	-25 ... +60
Relative air humidity	[%]	0 ... 95
Corrosion resistance class CRC <sup>2)</sup>		2
Note on materials		RoHS-compliant

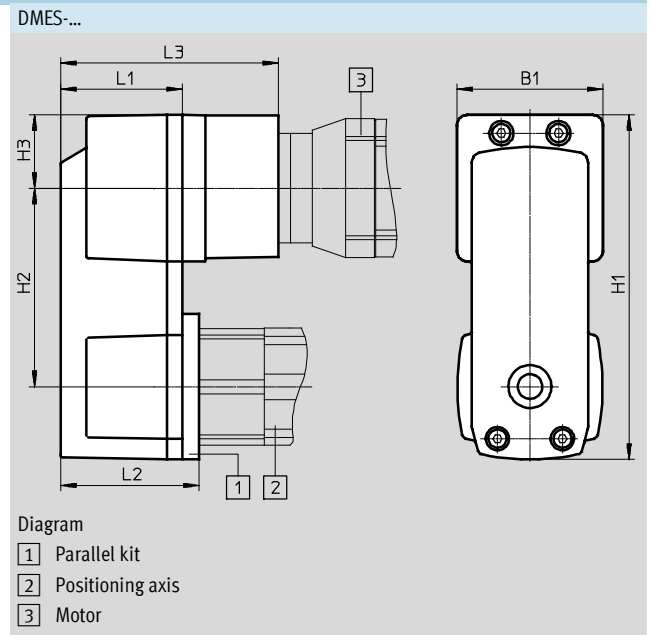
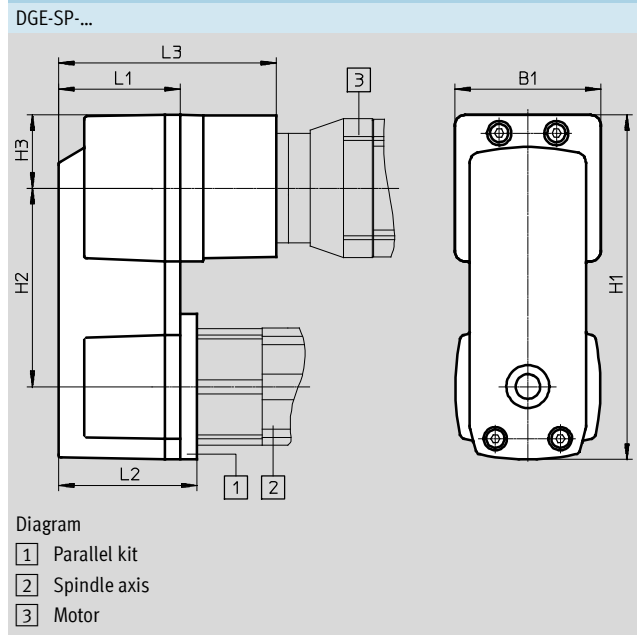
2) Corrosion resistance class 2 according to Festo standard 940 070  
 Components subject to moderate corrosion stress. Externally visible parts with primarily decorative surface requirements which are in direct contact with a normal industrial environment or media such as coolants or lubricating agents.

# Parallel kits EAMM-U

Technical data

FESTO

Dimensions and ordering data Download CAD data → [www.festo.com](http://www.festo.com)



Type	B1	H1	H2	H3	L1	L2	L3	Part No.	Type
EAMM-U-E24-32B <sup>1)</sup>	43.3	110.05	69 <sub>-0.1</sub>	21.7	39	-	-	543225	EAMM-U-E24-32B
EAMM-U-E24-40A <sup>1)</sup>								543226	EAMM-U-E24-40A
EAMM-U-E32-42B	56.4	132.7	76.5 <sub>-0.1</sub>	28.2	47	53.5	84	543228	EAMM-U-E32-42B
EAMM-U-E32-42C							97	543229	EAMM-U-E32-42C
EAMM-U-E32-55A							-	543230	EAMM-U-E32-55A
EAMM-U-E48-52B	85.8	189.9	107.5 <sub>-0.2</sub>	42.9	58	66.5	106	543232	EAMM-U-E48-52B
EAMM-U-E48-52C							120	543233	EAMM-U-E48-52C
EAMM-U-E48-70A							-	543234	EAMM-U-E48-70A

1) Only in combination with DMES-...

# Parallel kits EAMM-U

Technical data

Download CAD data → [www.festo.com](http://www.festo.com)

**EGSL-...**

Diagram:  
1 Parallel kit  
2 Mini slide  
3 Motor

**DNCE-...**

Diagram:  
1 Parallel kit  
2 Electric cylinder  
3 Motor

- - Note  
The motor can only be mounted on the side and underneath.

Type	B1	H1	H2 ±0.1	H3	L1	L2	L3	Part No.	Type
EAMM-U-D32-32B <sup>1)</sup>	45.1	93.1	48	22.6	40	4	-	543152	EAMM-U-D32-32B
EAMM-U-D32-40A								543150	EAMM-U-D32-40A
EAMM-U-D40-42B <sup>1)</sup>	56.5	115	60	28.2	47	4	84	543159	EAMM-U-D40-42B
EAMM-U-D40-42C <sup>1)</sup>							97	543160	EAMM-U-D40-42C
EAMM-U-D40-55A							-	543157	EAMM-U-D40-55A
EAMM-U-D60-52B <sup>1)</sup>							106	543167	EAMM-U-D60-52B
EAMM-U-D60-52C <sup>1)</sup>	86	162.6	82.5	42.9	58	4	120	543168	EAMM-U-D60-52C
EAMM-U-D60-70A							-	543165	EAMM-U-D60-70A

1) Only in combination with DNCE-...

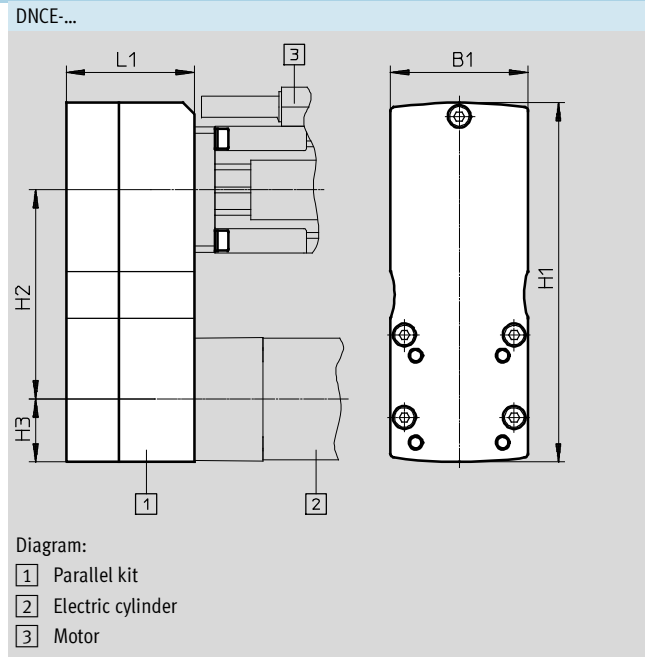
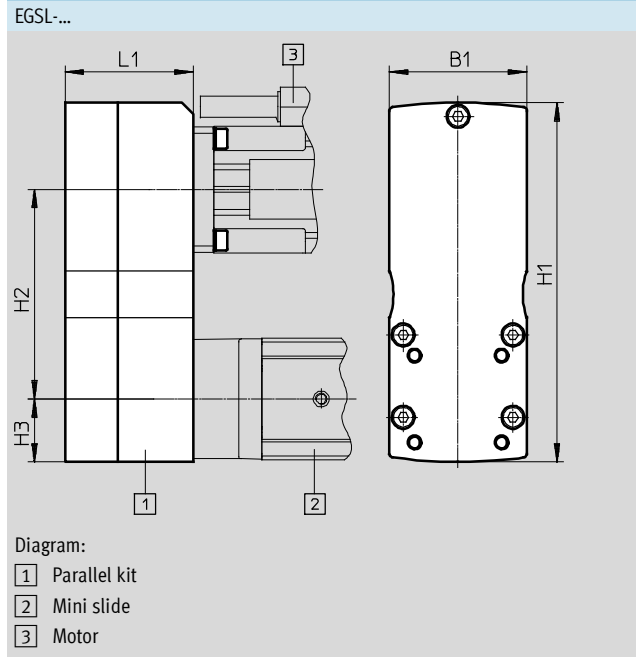
# Parallel kits EAMM-U

Technical data

FESTO

## Dimensions and ordering data

Download CAD data → [www.festo.com](http://www.festo.com)



Type	B1	H1	H2 ±1	H3	L1	Part No.	Type					
EAMM-U-50-D32-40A-78	50	128.8	78	22.8	45	1201591	EAMM-U-50-D32-40A-78					
EAMM-U-50-D32-40A-78-S1 <sup>1)</sup>						1202302	EAMM-U-50-D32-40A-78-S1					
EAMM-U-50-D32-42A-78						1201607	EAMM-U-50-D32-42A-78					
EAMM-U-50-D32-42A-78-S1 <sup>1)</sup>						1202312	EAMM-U-50-D32-42A-78-S1					
EAMM-U-60-D32-55A-91	60	157	91.5	27.5	56	1210126	EAMM-U-60-D32-55A-91					
EAMM-U-60-D32-55A-91-S1 <sup>1)</sup>						1210450	EAMM-U-60-D32-55A-91-S1					
EAMM-U-60-D32-57A-91						1210419	EAMM-U-60-D32-57A-91					
EAMM-U-60-D32-57A-91-S1 <sup>1)</sup>						1210453	EAMM-U-60-D32-57A-91-S1					
EAMM-U-60-D40-55A-91						1210438	EAMM-U-60-D40-55A-91					
EAMM-U-60-D40-55A-91-S1 <sup>1)</sup>						1210458	EAMM-U-60-D40-55A-91-S1					
EAMM-U-60-D40-57A-91						1210442	EAMM-U-60-D40-57A-91					
EAMM-U-60-D40-57A-91-S1 <sup>1)</sup>						1210462	EAMM-U-60-D40-57A-91-S1					
EAMM-U-86-D40-70A-102						86	188.5	102.5	38	69	1212826	EAMM-U-86-D40-70A-102
EAMM-U-86-D40-70A-102-S1 <sup>1)</sup>											1212854	EAMM-U-86-D40-70A-102-S1
EAMM-U-86-D40-87A-102	1215802	EAMM-U-86-D40-87A-102										
EAMM-U-86-D40-87A-102-S1 <sup>1)</sup>	1215814	EAMM-U-86-D40-87A-102-S1										
EAMM-U-86-D60-70A-102	71	1212477	EAMM-U-86-D60-70A-102									
EAMM-U-86-D60-70A-102-S1 <sup>1)</sup>		1212835	EAMM-U-86-D60-70A-102-S1									
EAMM-U-86-D60-87A-102		1215784	EAMM-U-86-D60-87A-102									
EAMM-U-86-D60-87A-102-S1 <sup>1)</sup>		1215810	EAMM-U-86-D60-87A-102-S1									
EAMM-U-110-D60-100A-120	110	225	120	45	82	1202436	EAMM-U-110-D60-100A-120					
EAMM-U-110-D60-100A-120-S1 <sup>1)</sup>						1203112	EAMM-U-110-D60-100A-120-S1					

1) Only in combination with DNCE-...

# Parallel kits EAMM-U

Technical data

## Dimensions and ordering data

Download CAD data → [www.festo.com](http://www.festo.com)

EGC-...-BS-...

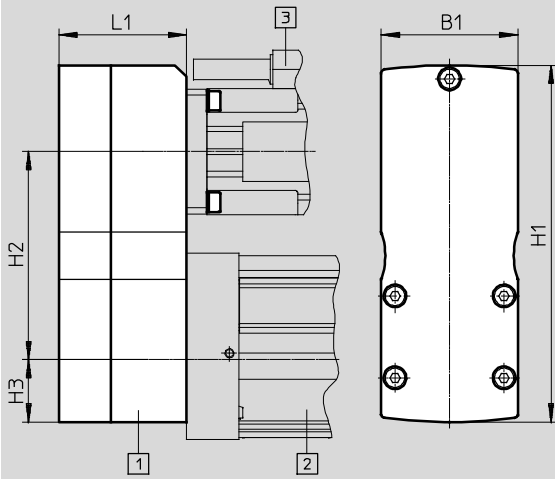


Diagram:

- 1 Parallel kit
- 2 Spindle axis
- 3 Motor

Type	B1	H1	H2 ±1	H3	L1	Part No.	Type
EAMM-U-50-S38-40A-78	50	131	78	25	43	1217708	EAMM-U-50-S38-40A-78
EAMM-U-50-S38-42A-78						1217945	EAMM-U-50-S38-42A-78
EAMM-U-60-S38-55A-91	60	157	91.5	27.5	53	1218538	EAMM-U-60-S38-55A-91
EAMM-U-60-S38-57A-91						1218568	EAMM-U-60-S38-57A-91
EAMM-U-60-S48-55A-91	60	161.5	91.5	32	54	1219370	EAMM-U-60-S48-55A-91
EAMM-U-60-S48-57A-91						1219379	EAMM-U-60-S48-57A-91
EAMM-U-86-S48-70A-102	86	188.5	102.5	38	67	1217689	EAMM-U-86-S48-70A-102
EAMM-U-86-S48-87A-177	86	268.5	177.5	43	67	1217604	EAMM-U-86-S48-87A-177
EAMM-U-86-S62-70A-177	86	268.5	177.5	43	69	1217543	EAMM-U-86-S62-70A-177
EAMM-U-86-S62-87A-177						1217373	EAMM-U-86-S62-87A-177
EAMM-U-110-S62-100A-207	110	322.5	207.5	55	82	1217381	EAMM-U-110-S62-100A-207
EAMM-U-110-S95-100A-207						1220656	EAMM-U-110-S95-100A-207
EAMM-U-145-S62-140A-288	145	448	288	70	99.5	1219440	EAMM-U-145-S62-140A-288
EAMM-U-145-S95-140A-288						1220582	EAMM-U-145-S95-140A-288

# Parallel kits EAMM-U

Technical data

FESTO

## Dimensions and ordering data

Download CAD data → [www.festo.com](http://www.festo.com)

EGSA-...

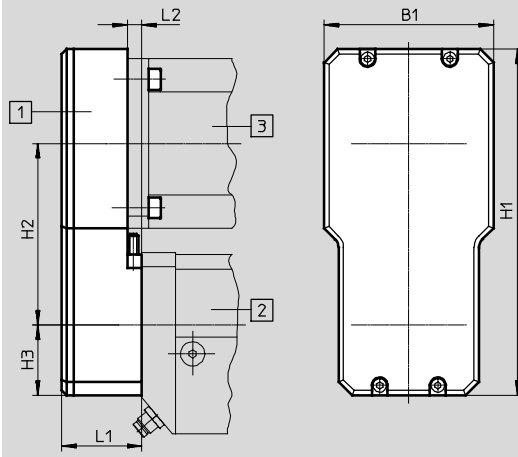


Diagram:

- 1 Parallel kit
- 2 Cantilever axis
- 3 Motor

Type	B1	H1	H2	H3 +1/-4	L1	L2	Part No.	Type
EAMM-U-A19-40A	49	107	24.5	57	30	7	559785	EAMM-U-A19-40A
EAMM-U-A22-55A	58	133	29	67.8	32	4.5	559786	EAMM-U-A22-55A
EAMM-U-A22-70A	70	143	29	75	33	6	559787	EAMM-U-A22-70A



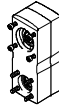
# Parallel kits EAMM-U

Accessories

## Counter bearing EAMG

Material:  
Wrought aluminium alloy  
RoHS-compliant

Can only be used in combination with a parallel kit as per the following diagram (→ page 3 ... 7).

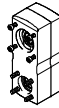


Ordering data							
Type	For size	Max. rotational speed [rpm]	Ambient temperature [°C]	Weight [g]	Part No.	Type	
EAMG-U1-50	50	6,000	-10 ... +60	20	1354281	EAMG-U1-50	
EAMG-U1-60	60	6,000		35	1354282	EAMG-U1-60	
EAMG-U1-86	86	5,000		83	1354283	EAMG-U1-86	
EAMG-U1-110	110	5,000		169	1354284	EAMG-U1-110	
EAMG-U1-145	145	4,000		186	1354285	EAMG-U1-145	

## Clamping sleeve EAMH

Material:  
Corrosion-resistant steel  
RoHS-compliant

Can only be used in combination with a parallel kit as per the following diagram (→ page 3 ... 7).



Ordering data								
Type	For size	For shaft Ø, motor/axis Ø h7 ... k7	Max. rotational speed [rpm]	Mass moment of inertia [kg mm <sup>2</sup> ]	Ambient temperature [°C]	Weight [g]	Part No.	Type
EAMH-50-5-C13.6-P	50	5	6,000	0.39	-10 ... +60	20	1354092	EAMH-50-5-C13.6-P
EAMH-50-6-C13.6-P	50	6	6,000	0.38		19	1354093	EAMH-50-6-C13.6-P
EAMH-50-8-C13.6-P	50	8	6,000	0.35		16	1354094	EAMH-50-8-C13.6-P
EAMH-60-12-C18.1-P	60	12	6,000	1.3		32	1354099	EAMH-60-12-C18.1-P
EAMH-60-6-C18.1-P	60	6	6,000	1.57		44	1354095	EAMH-60-6-C18.1-P
EAMH-60-6.35-C18.1-P	60	6.35	6,000	1.56		43	1354096	EAMH-60-6.35-C18.1-P
EAMH-60-8-C18.1-P	60	8	6,000	1.53		41	1354097	EAMH-60-8-C18.1-P
EAMH-60-9-C18.1-P	60	9	6,000	1.5		39	1354098	EAMH-60-9-C18.1-P
EAMH-86-8-C27.3-P	86	8	5,000	10.3		128	1354100	EAMH-86-8-C27.3-P
EAMH-86-11-C27.3-P	86	11	5,000	10.1		119	1354101	EAMH-86-11-C27.3-P
EAMH-86-12-C27.3-P	86	12	5,000	10		115	1354102	EAMH-86-12-C27.3-P
EAMH-86-14-C27.3-P	86	14	5,000	8.74		103	1459337	EAMH-86-14-C27.3-P
EAMH-110-12-C34-P	110	12	5,000	36.3		278	1354103	EAMH-110-12-C34-P
EAMH-110-14-C34-P	110	14	5,000	35.8		267	1354104	EAMH-110-14-C34-P
EAMH-110-16-C34-P	110	16	5,000	35.1		254	1354105	EAMH-110-16-C34-P
EAMH-110-19-C34-P	110	19	5,000	33.3		230	1354106	EAMH-110-19-C34-P
EAMH-110-25-C34-P	110	25	5,000	25.8		170	1354107	EAMH-110-25-C34-P
EAMH-145-12-C34-P	145	12	4,000	43.9		338	1354108	EAMH-145-12-C34-P
EAMH-145-19-C34-P	145	19	4,000	38		281	1459342	EAMH-145-19-C34-P
EAMH-145-24-C34-P	145	24	4,000	34		229	1354109	EAMH-145-24-C34-P
EAMH-145-25-C34-P	145	25	4,000	32.1	217	1354110	EAMH-145-25-C34-P	

# Parallel kits EAMM-U

Accessories

### Clamping component EADT

Material:

Plastic

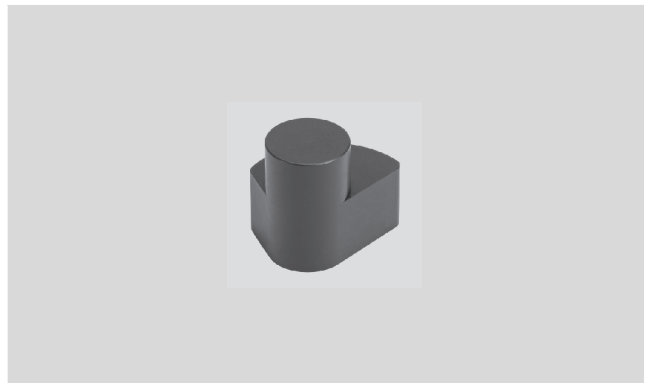
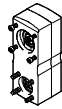
RoHS-compliant

For adjusting the toothed belt pretension with EAMM-U-110 and EAMM-U-145.

The motor is pushed away from the axis mechanism by turning the clamping component secured in a hole in the housing (the motor can be moved in a slot for this purpose).

This enables high toothed belt pretension forces to be generated with low torques at the clamping component.

Can only be used in combination with a parallel kit as per the following diagram (→ page 3 ... 7).



Ordering data				
Type	Ambient temperature [°C]	Weight [g]	Part No.	Type
EADT-E-U1-110	-10 ... +60	9	1461069	EADT-E-U1-110