

Compact Vision System SBOC-M/SBOI-M

FESTO



Compact Vision System SBOC-M/SBOI-M

Key features

FESTO

Problem description

Modern automation systems are for the most part designed for high production speeds which the human eye has trouble following.

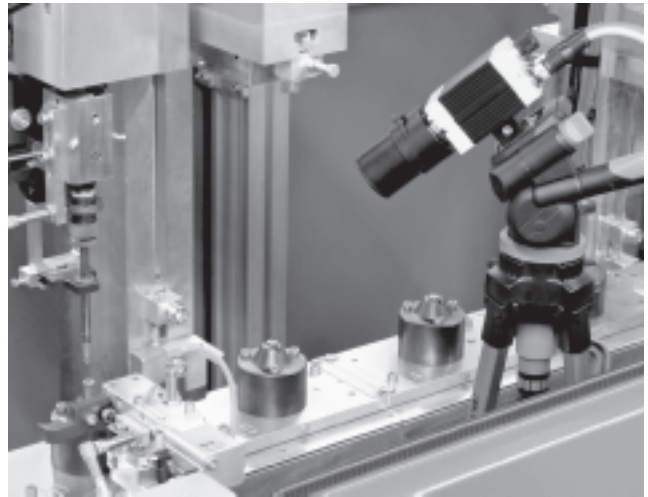
Disadvantage of this high speed: Fitters and service employees cannot detect errors in the motion sequence and their causes straight away.

It is also becoming increasingly difficult to set the system parameters to their optimum values.

Typical applications

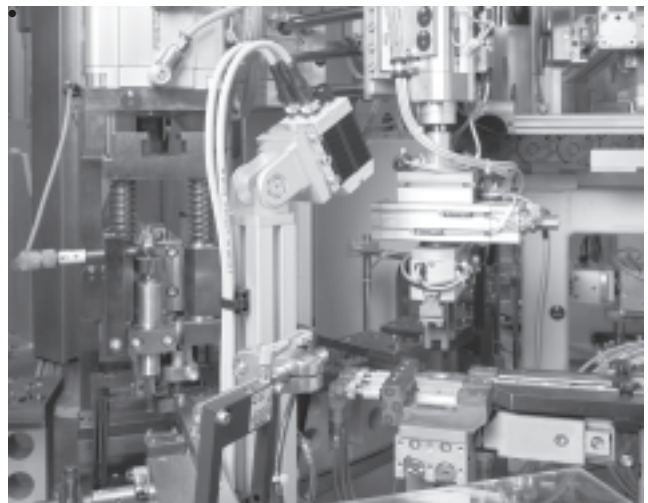
Mobile deployment of the high-speed camera for service and commissioning to increase the productivity and availability of automation systems

- Cycle time reduction through pinpointing of idle periods in motion sequences
- Optimum harmonisation of the travel times of individual axes in multi-axis systems, localisation of critical movements
- Time-synchronised visualisation of movement processes from several sides on a PC for greater ease of handling
- Localisation of unwanted vibrations which have a negative effect on the repetition accuracy of movement processes and can cause premature material fatigue

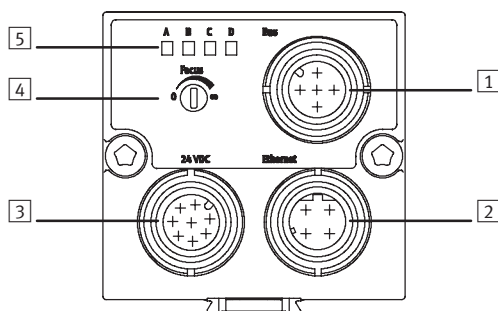


Stationary mounting of the high-speed camera to increase the availability of automation systems

- Continuous recording of processes in the ring buffer of the camera
- If a fault occurs, recording is stopped by an external signal. The case history of the fault is then stored in the camera, thus permitting an analysis of the cause



Interfaces



- 1 Bus connection
- 2 Ethernet connection
- 3 Power supply and inputs/outputs
- 4 Adjusting screw for focus

- 5 Status LEDs:
A Operating system
B Ethernet traffic
C Recording
D Recording status

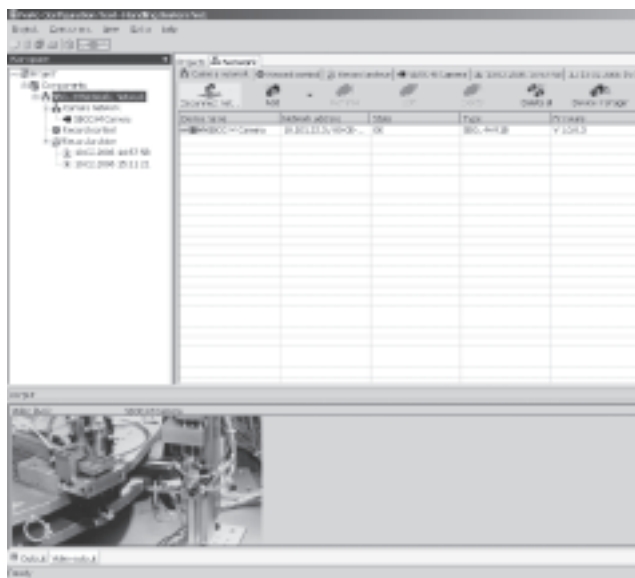
Compact Vision System SBOC-M/SBOI-M

Key features

FESTO

FCT software with SBO.. Network plug-in

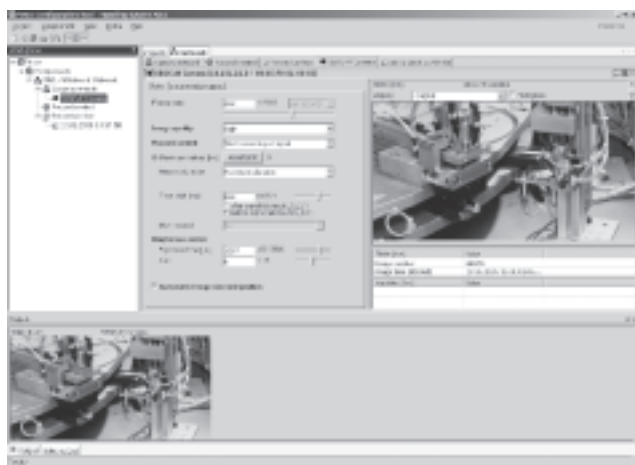
Configuring a camera network



The "SBO..-M Network" is a plug-in for the Festo configuration tool (FCT for short). It provides the following functions:

- Configuration and commissioning of a camera network with any desired number of Compact Vision Systems of the type SBOC-M or SBOI-M
- Creation of time-synchronised recordings using all devices in the camera network in order to record a scene from various angles, for example

Setting the camera



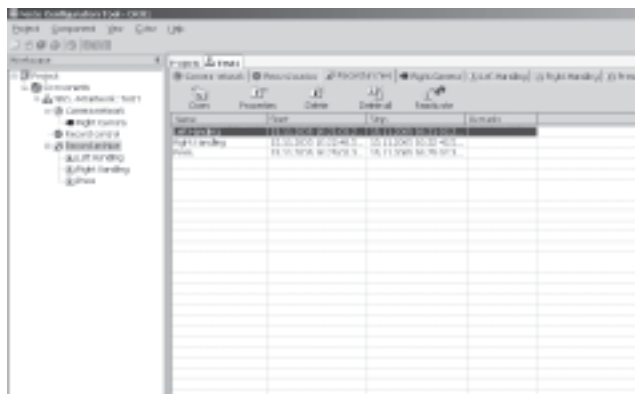
Using the live pictures from the camera, the lens can be set and parameters such as exposure time, frames per second, recording duration and picture quality, for example, adjusted.

With the parameters you can also define what is to happen when a trigger signal (edge change of an external 24 V signal) occurs:

- Start the recording
- Stop the recording
- Record only one picture

Time delays between trigger signal and start of recording or stop recording as well as recording several films or pictures in the camera memory (multi-recording) can also be determined in a user-friendly manner.

Recording control



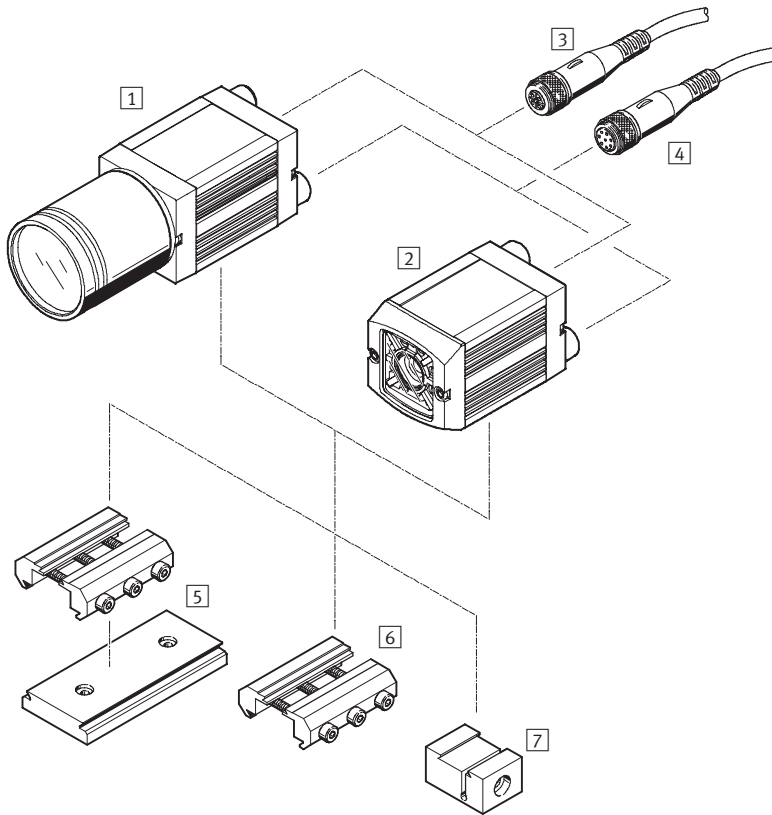
Recording can be started once the camera has been set up. You can choose whether the camera should wait for the occurrence of an external trigger condition, start recording directly following initialisation or store the pictures sent via Ethernet on a PC without buffering them in the camera. The PC can be removed once recording has been started in "Wait for trigger

signal" mode. The camera operates automatically and waits for the trigger condition to occur. Recorded sequences are stored in the internal memory of the respective camera and can be transmitted to the FCT software once a connection has been re-established with a PC. The sequences are archived and can be analysed on the PC.

Compact Vision System SBOC-M/SBOI-M

Peripherals overview

FESTO



Accessories		Brief description	→ Page/Internet
Compact Vision System			
[1]	SBOC-M-R1B	For standard lens with C mount connection	6
[2]	SBOI-M-R1B	With integrated lens and light	
–	SBOA-M-SYSTAINER	Systainer with Compact Vision System SBOC-M-R1B and an extensive range of accessories	9
Cable with socket			
[3]	SBOA-K30E-M12S	Ethernet diagnostic cable	9
[4]	SIM-M12-8GD-....-PU	For supplying the operating voltage	
Lens			
–	SBOL-12	Focal distance 12 mm	9
–	SBOL-25	Focal distance 25 mm	
Mounting components			
[5]	Adapter kit SBOA-HMSV-39	With screw-on adapter plate	8
[6]	Adapter kit SBOA-HMSV-40	Without screw-on adapter plate	
[7]	Adapter kit SBOA-HMSV-41	With female thread G1/4 for mounting on commercially available tripods	
–	Adapter SBOL-C-5	5 mm spacer ring (CS mount to C mount)	9

Compact Vision System SBOC-M/SBOI-M

Type codes

FESTO

		SBO	C	-	M	-	R1	B
Function								
SBO	Compact Vision System							
Design								
C	For standard lens with C mount or CS mount ¹⁾ connection							
I	Integrated lens							
Equipment								
M	With integrated application-specific software							
Sensor resolution								
R1	640 x 480 pixels, VGA resolution							
Sensor type								
B	Monochrome							


1) CS mount without protective tube.

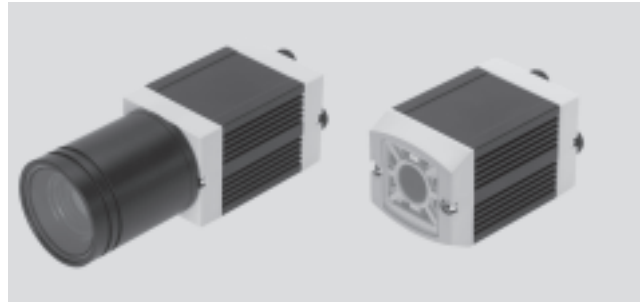
Compact Vision System SBOC-M/SBOI-M

Technical data

FESTO

-  - Voltage
24 V DC

-  - Temperature range
-10 ... +50 °C



General technical data			
Type		SBOC-M	SBOI-M
Sensor resolution	[pixels]	640x480	
Exposure time	[ms]	0.04 ... 1,000	
Frame rate (full image)	[fps]	185	
Sensor type		Monochrome	
Lens mounting		C mount CS mount ¹⁾	Integrated lens
Operating distance	[mm]	Dependent on the lens selected	22 ... 1,000
Field of vision	[mm]	Dependent on the lens selected	14x10 ... 520x390

1) Without protective tube.

Electrical data			
Type		SBOC-M	SBOI-M
Nominal operating voltage	[V DC]	24	
Permissible voltage fluctuations	[%]	±10	
Current consumption with load-free outputs	[mA]	120	
Max. residual current	[A]	1.5 at the 24 V outputs	
Protection class		IP65, IP67 ¹⁾	IP65, IP67
Ethernet interface			
Bus interface		IEEE802.3U (100BaseT)	
Connection technology		Plug M12	
Transmission speed	[Mbps]	100	
Supported protocols		TCP/IP	

1) Only in combination with protective tube (included in scope of delivery).

Operating and environmental conditions		
Ambient temperature	[°C]	-10 ... +50
Storage temperature	[°C]	-10 ... +60
Ambient conditions		Screened from extreme external light sources Cleanest possible ambient air
CE mark		To EU EMC Directive
Certification		c UL us - Recognized (OL) C-Tick

Compact Vision System SBOC-M/SBOI-M

Technical data

FESTO

Materials	
Housing	Anodised aluminium
Cap	Acrylic butadiene styrene, glass fibre reinforced
Note on materials	Free of copper and PTFE
	RoHS-compliant

Weight [g]		
Lens mounting	C mount/CS mount ¹⁾	Integrated lens
Type	SBOC-M	SBOI-M
Compact Vision System	182	184

1) CS mount without protective tube.

Dimensions	
C mount/CS mount ¹⁾ SBOC-M	

1) Power supply and inputs/outputs 2) Ethernet connection 4) Protective tube

3) Bus connection

Integrated lens SBOI-M	
------------------------	--

1) Power supply and inputs/outputs 2) Ethernet connection 3) Bus connection

1) CS mount without protective tube.

Ordering data		
	Part No.	Type
For standard lens with C mount or CS mount ¹⁾ connection	541 398	SBOC-M-R1B
Integrated lens	541 395	SBOI-M-R1B

1) CS mount without protective tube.

Compact Vision System SBOC-M/SBOI-M

Accessories

FESTO

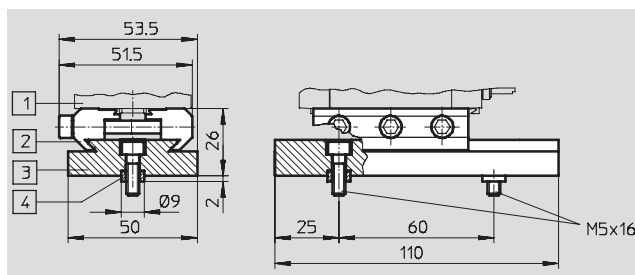
Adapter kit

SBOA-HMSV-39

with screw-on adapter plate

Material:

Wrought aluminium alloy, anodised



Ordering data		
	Part No.	Type
Adapter kit	541 599	SBOA-HMSV-39

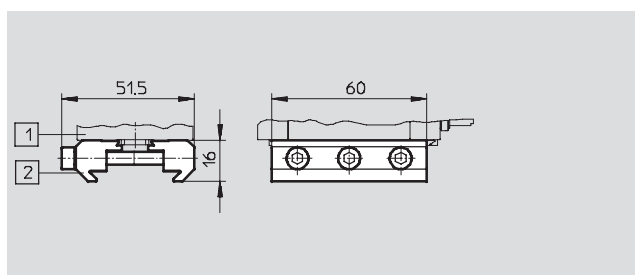
Adapter kit

SBOA-HMSV-40

without screw-on adapter plate

Material:

Wrought aluminium alloy, anodised



Ordering data		
	Part No.	Type
Adapter kit	541 600	SBOA-HMSV-40

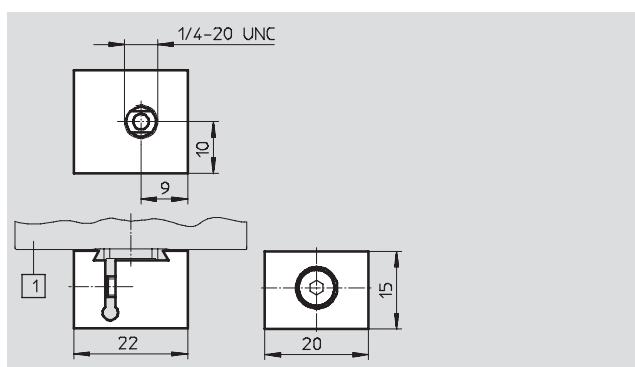
Adapter kit

SBOA-HMSV-41

with female thread G $\frac{1}{4}$ for mounting
on commercially available tripods

Material:

Wrought aluminium alloy, anodised



Ordering data		
	Part No.	Type
Adapter kit	542 140	SBOA-HMSV-41

Compact Vision System SBOC-M/SBOI-M

Accessories

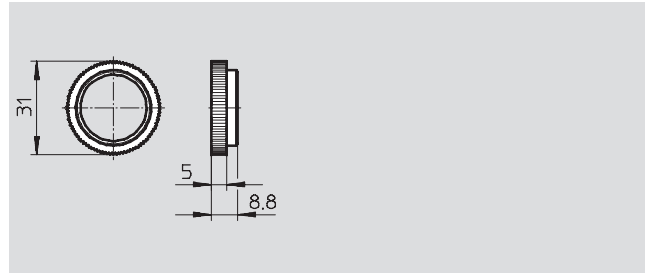
FESTO

Adapter SBOL-C-5

5 mm spacer ring
(CS mount to C mount)

Material:

Wrought aluminium alloy, anodised




Ordering data		
	Part No.	Type
Adapter	541 601	SBOL-C-5


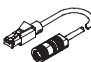
Systainer with Compact Vision System SBOA-M-SYSTAINER

- Camera SBOC-M-R1B
- Mounting kit for tripod
- Zoom lens (10 – 40 mm)
- Plug-type power supply unit incl. trigger button
- Extension cable for triggering button
- Manual cable drum
- M12 to RJ45 Ethernet cable
- Ethernet crossover patch cable
- RJ45 coupling
- 1,000 W light
- 2 tripods (one each for camera and light)
- FCT configuration software
- Documentation package



Ordering data		
	Part No.	Type
Systainer with Compact Vision System SBOC-M-R1B and accessories	543 408	SBOA-M-SYSTAINER

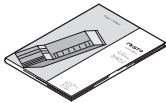


Ordering data – Lens				
	Brief description	Focal distance [mm]	Part No.	Type
	C mount with fixed focal distance	12	549 132	SBOL-12
		25	549 133	SBOL-25

Ordering data – Cables M12x1					Technical data → Internet: sim, soba	
	Assembly	Use	Connection	Cable length [m]	Part No.	Type
Straight socket						
	Union nut M12x1	Operating voltage supply	8-pin	2	525 616	SIM-M12-8GD-2-PU
				5	525 618	SIM-M12-8GD-5-PU
	Union nut M12x1	Ethernet diagnostic cable	4-pin, d-coded	3	542 139	SBOA-K30E-M12S

Compact Vision System SBOC-M/SBOI-M

Accessories

FESTO

Ordering data – Documentation				
	Brief description	Language	Part No.	Type
	Description User documentation in paper form is not included in the scope of delivery of the camera system.	German	542 122	P.BE-SBO-M-DE
		English	542 123	P.BE-SBO-M-EN
	Documentation package The user documentation on CD-ROM is included in the scope of delivery of the Compact Vision System.	German English	542 121	P.BE-SBO-M-UDOK
	Configuration software The FCT (Festo configuration tool) configuration software on CD-ROM is included in the scope of delivery of the Compact Vision System.	German English French	539 622	P.SW-FCT

Product Range and Company Overview

A Complete Suite of Automation Services

Our experienced engineers provide complete support at every stage of your development process, including: conceptualization, analysis, engineering, design, assembly, documentation, validation, and production.



Custom Automation Components
Complete custom engineered solutions



Custom Control Cabinets
Comprehensive engineering support and on-site services



Complete Systems
Shipment, stocking and storage services

The Broadest Range of Automation Components

With a comprehensive line of more than 30,000 automation components, Festo is capable of solving the most complex automation requirements.



Electromechanical
Electromechanical actuators, motors, controllers & drives



Pneumatics
Pneumatic linear and rotary actuators, valves, and air supply



PLCs and I/O Devices
PLC's, operator interfaces, sensors and I/O devices

Supporting Advanced Automation... As No One Else Can!

Festo is a leading global manufacturer of pneumatic and electromechanical systems, components and controls for industrial automation, with more than 12,000 employees in 56 national headquarters serving more than 180 countries. For more than 80 years, Festo has continuously elevated the state of manufacturing with innovations and optimized motion control solutions that deliver higher performing, more profitable automated manufacturing and processing equipment. Our dedication to the advancement of automation extends beyond technology to the education and development of current and future automation and robotics designers with simulation tools, teaching programs, and on-site services.

Quality Assurance, ISO 9001 and ISO 14001 Certifications

Festo Corporation is committed to supply all Festo products and services that will meet or exceed our customers' requirements in product quality, delivery, customer service and satisfaction.

To meet this commitment, we strive to ensure a consistent, integrated, and systematic approach to management that will meet or exceed the requirements of the ISO 9001 standard for Quality Management and the ISO 14001 standard for Environmental Management.



© Copyright 2008, Festo Corporation. While every effort is made to ensure that all dimensions and specifications are correct, Festo cannot guarantee that publications are completely free of any error, in particular typing or printing errors. Accordingly, Festo cannot be held responsible for the same. For Liability and Warranty conditions, refer to our "Terms and Conditions of Sale", available from your local Festo office. All rights reserved. No part of this publication may be reproduced, distributed, or transmitted in any form or by any means, electronic, mechanical, photocopying or otherwise, without the prior written permission of Festo. All technical data subject to change according to technical update.



Printed on recycled paper at New Horizon Graphic, Inc., FSC certified as an environmentally friendly printing plant.

Festo North America

Festo Regional Contact Center

5300 Explorer Drive
Mississauga, Ontario L4W 5G4
Canada

USA Customers:

For ordering assistance,

Call: 1.800.99.FESTO (1.800.993.3786)

Fax: 1.800.96.FESTO (1.800.963.3786)

Email: customer.service@us.festo.com

For technical support,

Call: 1.866.GO.FESTO (1.866.463.3786)

Fax: 1.800.96.FESTO (1.800.963.3786)

Email: product.support@us.festo.com

Canadian Customers:

Call: 1.877.GO.FESTO (1.877.463.3786)

Fax: 1.877.FX.FESTO (1.877.393.3786)

Email: festo.canada@ca.festo.com

USA Headquarters

Festo Corporation
395 Moreland Road
P.O. Box 18023
Hauppauge, NY 11788, USA
www.festo.com/us

USA Sales Offices

Appleton

North 922 Tower View Drive, Suite N
Greenville, WI 54942, USA

Boston

120 Presidential Way, Suite 330
Woburn, MA 01801, USA

Chicago

1441 East Business Center Drive
Mt. Prospect, IL 60056, USA

Dallas

1825 Lakeway Drive, Suite 600
Lewisville, TX 75057, USA

Detroit – Automotive Engineering Center

2601 Cambridge Court, Suite 320
Auburn Hills, MI 48326, USA

New York

395 Moreland Road
Hauppauge, NY 11788, USA

Silicon Valley

4935 Southfront Road, Suite F
Livermore, CA 94550, USA

United States



USA Headquarters, East: Festo Corp., 395 Moreland Road, Hauppauge, NY 11788

Phone: 1.631.435.0800; Fax: 1.631.435.8026;

Email: info@festo-usa.com

www.festo.com/us

Canada



Headquarters: Festo Inc., 5300 Explorer Drive, Mississauga, Ontario L4W 5G4

Phone: 1.905.624.9000; Fax: 1.905.624.9001;

Email: festo.canada@ca.festo.com

www.festo.ca

Mexico



Headquarters: Festo Pneumatic, S.A., Av. Ceylán 3, Col. Tequesquahuac,
54020 Tlalneapantla, Edo. de México

Phone: 011 52 [55] 53 21 66 00; Fax: 011 52 [55] 53 21 66 65;

Email: festo.mexico@mx.festo.com

www.festo.com/mx

Central USA

Festo Corporation
1441 East Business
Center Drive
Mt. Prospect, IL 60056, USA
Phone: 1.847.759.2600
Fax: 1.847.768.9480



Western USA

Festo Corporation
4935 Southfront Road,
Suite F
Livermore, CA 94550, USA
Phone: 1.925.371.1099
Fax: 1.925.245.1286



Festo Worldwide

Argentina Australia Austria Belarus Belgium Brazil Bulgaria Canada Chile China Colombia Croatia Czech Republic Denmark
Estonia Finland France Germany Great Britain Greece Hong Kong Hungary India Indonesia Iran Ireland Israel Italy Japan Latvia
Lithuania Malaysia Mexico Netherlands New Zealand Norway Peru Philippines Poland Romania Russia Serbia Singapore
Slovakia Slovenia South Africa South Korea Spain Sweden Switzerland Taiwan Thailand Turkey Ukraine United States Venezuela

www.festo.com