



Panel-mounting Valves and Actuating Attachments

Panel-mounting valves and actuating attachments

FESTO

Key features



Mushroom pushbutton with detent PR

The actuator is unlocked by turning the detent ring at the mushroom button.

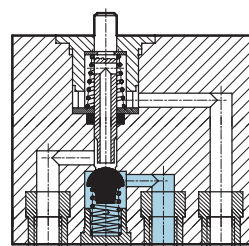
Mushroom pushbutton with detent PRS Lockable

After pressing, the button remains locked and can only be unlatched with the key. The key can be removed in either switch position.

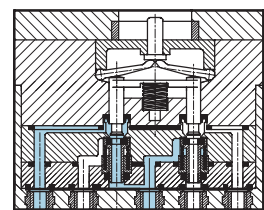
Key actuator Q With key

The key actuator can only be activated with the key. The key can be removed in either switch position.

Basic valve SV-3-M5






Basic valve SV-5-M5-B

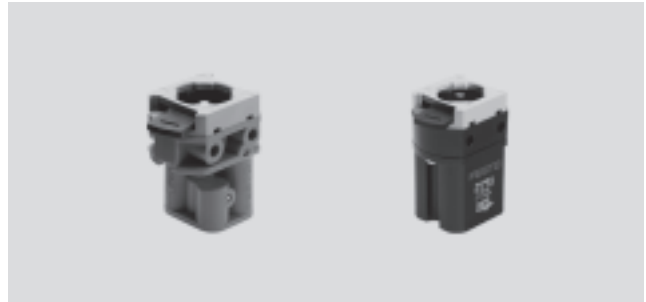


Panel-mounting valves and actuating attachments

FESTO

Technical data

-  Flow rate
65 ... 95 l/min
-  Pressure
-0.9 ... +8 bar
0 ... 8 bar
-  Temperature range
-10 ... +60 °C



General technical data – Basic valves			
Function		3/2-way valve	5/2-way valve
Operating medium		Filtered compressed air, lubricated or unlubricated Vacuum ¹⁾	
Constructional design		Poppet valve, directly actuated in one direction, with spring return	
Type of mounting		Front panel mounting, mounting diameters 22.5 and 30.5 mm, also 2 through-holes	
Pneumatic connection		M5	
Nominal size	[mm]	2	2.3
Standard nominal flow rate 1 > 2	[l/min]	65	95
Operating pressure range	[bar]	–0.95 ... +8	0 ... +8
Actuating force at 6 bar	[N]	12	17
Temperature range	[°C]	–10 ... +60	
Materials	Housing	Plastic	
	Valve stem	Brass	
	Seals	Nitrile rubber	
Weight	[g]	40	53

1) SV-3-M5: Vacuum connection at port 1

General technical data – Actuator attachments									
		Pushbutton actuator	Mushroom pushbutton	Mushroom pushbutton with detent		Selector switch	Toggle switch	Key actuator with key	
				Red	Red Lockable				
Actuating force / actuating torque at 6 bar		[Nm]	14	14	25	23	0.4	0.14	23
Weights	Installation diameter 22.5	[g]	14	20	26	82	21	19	80
	Installation diameter 30.5	[g]	22	28	37	91	30	27	88

Panel-mounting valves and actuating attachments

FESTO

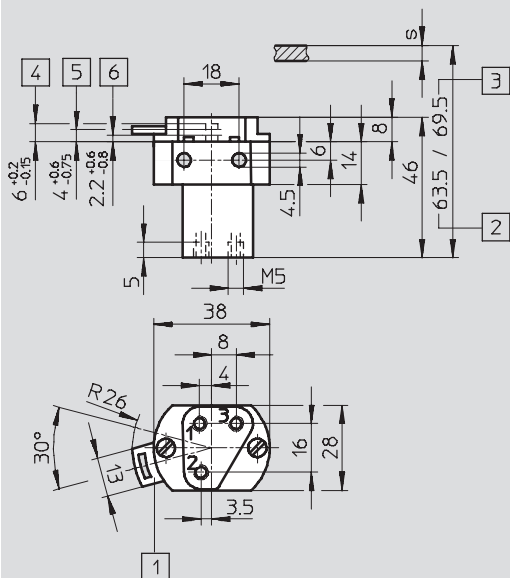
Technical data

Dimensions – Basic valves

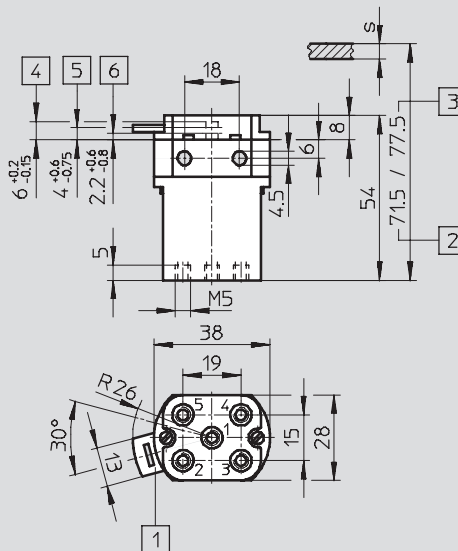
Download CAD data → www.festo.com

SV-3-M5

SV-5-M5-B



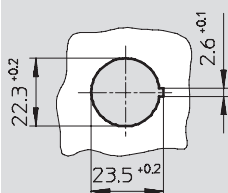
- 1 Quick latching coupler for actuator attachments
- 2 Installation dimensions for $\varnothing 22.5$
- 3 Installation dimensions for $\varnothing 30.5$
- 4 Max. stroke
- 5 Start of opening
- 6 Max. opening
- s Front panel thickness



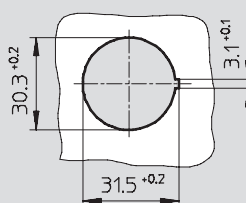
- 1 Supply port
- 2, 4 Working line
- 3, 5 Exhaust

Mounting aperture

Installation diameter 22.5



Installation diameter 30.5



Dimensions – Actuator attachments

Download CAD data → www.festo.com

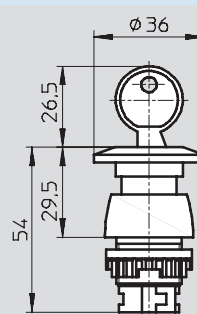
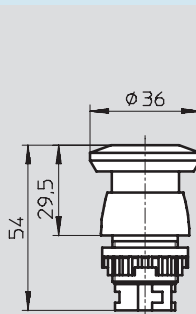
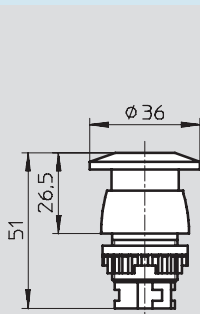
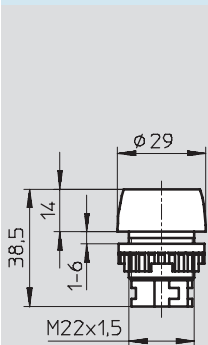
Installation diameter 22.5

Pushbutton actuator T-22

Mushroom pushbutton P-22

Mushroom pushbutton with detent, lockable PR-22

Mushroom pushbutton with detent, lockable PRS-22



Panel-mounting valves and actuating attachments

FESTO

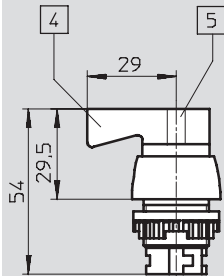
Technical data

Dimensions – Actuator attachments for front panel mounting

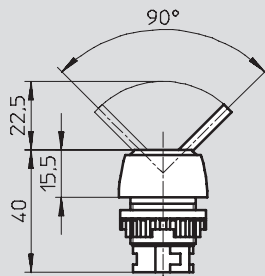
Download CAD data → www.festo.com

Installation diameter 22.5

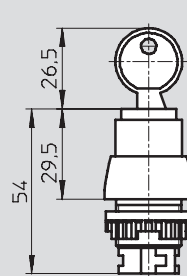
Selector switch N-22



Toggle switch H-22

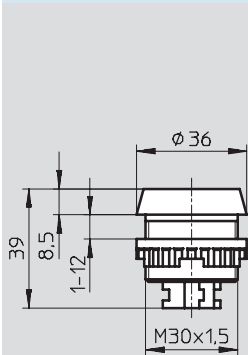


Key actuator Q-22

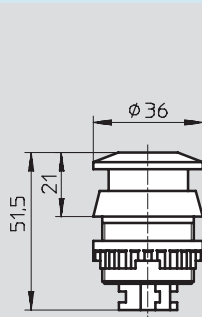


Installation diameter 30.5

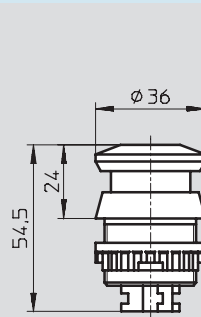
Pushbutton actuator T-30



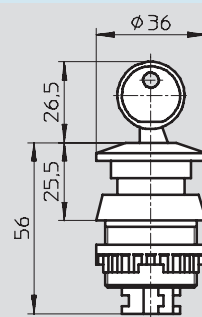
Mushroom pushbutton P-30



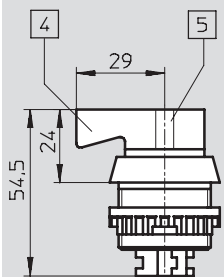
Mushroom pushbutton with detent, lockable PR-30



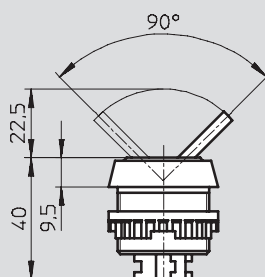
Mushroom pushbutton with detent, lockable PRS-30



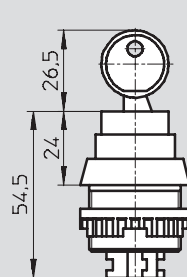
Selector switch N-30



Toggle switch H-30



Key actuator Q-30



Type N

- 4 = Off
- 5 = On

Type PR

The actuator is unlocked by turning the detent ring at the mushroom button.

Type PRS

After pressing, the button remains locked and can only be unlatched with the key. The key can be removed in either switch position.

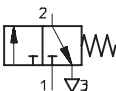
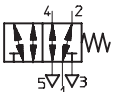
Type Q



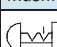
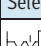
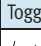
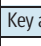
The key actuator can only be activated with the key. The key can be removed in either switch position.

Panel-mounting valves and actuating attachments

FESTO

Technical data

Ordering data – Basic valves			
Circuit symbol	Description	Part No.	Type
	3/2-way valve	6817	SV-3-M5
	5/2-way valve	11 914	SV-5-M5-B

Ordering data – Actuator attachments					
Circuit symbol	Description	Installation diameter 22.5		Installation diameter 30.5	
		Part No.	Type	Part No.	Type
Pushbutton actuator				Pushbutton actuator	
	Black	9 289	T-22-SW	9 291	T-30-SW
	Yellow	9 290	T-22-GE	9 292	T-30-GE
	Red	9 997	T-22-RT	10 014	T-30-RT
Mushroom pushbutton					
	Black	9 293	P-22-SW	9 295	P-30-SW
Mushroom pushbutton with detent					
	Red	9 297	PR-22-RT	9 298	PR-30-RT
	Red, lockable	9 299	PRS-22-RT	9 300	PRS-30-RT
Selector switch					
	Black	9 301	N-22-SW	9 302	N-30-SW
Toggle switch					
	Black	9 305	H-22-SW	9 306	H-30-SW
Key actuator with key					
	–	9 303	Q-22	9 304	Q-30

Product Range and Company Overview

A Complete Suite of Automation Services

Our experienced engineers provide complete support at every stage of your development process, including: conceptualization, analysis, engineering, design, assembly, documentation, validation, and production.



Custom Automation Components
Complete custom engineered solutions



Custom Control Cabinets
Comprehensive engineering support
and on-site services



Complete Systems
Shipment, stocking and storage services

The Broadest Range of Automation Components

With a comprehensive line of more than 30,000 automation components, Festo is capable of solving the most complex automation requirements.



Electromechanical
Electromechanical actuators, motors,
controllers & drives



Pneumatics
Pneumatic linear and rotary actuators,
valves, and air supply



PLCs and I/O Devices
PLC's, operator interfaces, sensors
and I/O devices

Supporting Advanced Automation... As No One Else Can!

Festo is a leading global manufacturer of pneumatic and electromechanical systems, components and controls for industrial automation, with more than 12,000 employees in 56 national headquarters serving more than 180 countries. For more than 80 years, Festo has continuously elevated the state of manufacturing with innovations and optimized motion control solutions that deliver higher performing, more profitable automated manufacturing and processing equipment. Our dedication to the advancement of automation extends beyond technology to the education and development of current and future automation and robotics designers with simulation tools, teaching programs, and on-site services.

Quality Assurance, ISO 9001 and ISO 14001 Certifications

Festo Corporation is committed to supply all Festo products and services that will meet or exceed our customers' requirements in product quality, delivery, customer service and satisfaction.

To meet this commitment, we strive to ensure a consistent, integrated, and systematic approach to management that will meet or exceed the requirements of the ISO 9001 standard for Quality Management and the ISO 14001 standard for Environmental Management.



© Copyright 2008, Festo Corporation. While every effort is made to ensure that all dimensions and specifications are correct, Festo cannot guarantee that publications are completely free of any error, in particular typing or printing errors. Accordingly, Festo cannot be held responsible for the same. For Liability and Warranty conditions, refer to our "Terms and Conditions of Sale", available from your local Festo office. All rights reserved. No part of this publication may be reproduced, distributed, or transmitted in any form or by any means, electronic, mechanical, photocopying or otherwise, without the prior written permission of Festo. All technical data subject to change according to technical update.



Printed on recycled paper at New Horizon Graphic, Inc., FSC certified as an environmentally friendly printing plant.

Festo North America

United States

Customer Resource Center

502 Earth City Expy., Suite 125
Earth City, MO 63045

For ordering assistance, or to find
your nearest Festo Distributor,

Call: 1.800.99.FESTO

Fax: 1.800.96.FESTO

Email: customer.service@us.festo.com

For technical support,

Call: 1.866.GO.FESTO

Fax: 1.800.96.FESTO

Email: product.support@us.festo.com

Headquarters

Festo Corporation
395 Moreland Road
P.O. Box 18023
Hauppauge, NY 11788
www.festo.com/us

Sales Offices

Appleton

N. 922 Tower View Drive, Suite N
Greenville, WI 54942

Boston

120 Presidential Way, Suite 330
Woburn, MA 01801

Chicago

1441 East Business Center Drive
Mt. Prospect, IL 60056

Dallas

1825 Lakeway Drive, Suite 600
Lewisville, TX 75057

Detroit - Automotive Engineering Center

2601 Cambridge Court, Suite 320
Auburn Hills, MI 48326

New York

395 Moreland Road
Hauppauge, NY 11788

Silicon Valley

4935 Southfront Road, Suite F
Livermore, CA 94550

Design and Manufacturing Operations



East: 395 Moreland Road, Hauppauge, NY 11788



Central: 1441 East Business Center Drive, Mt. Prospect, IL 60056



West: 4935 Southfront Road, Suite F, Livermore, CA 94550

Mexico

Headquarters

Festo Pneumatic, S.A.
Av. Ceylán 3, Col. Tequesquahuac
54020 Tlalnepantla, Edo. de México
Call: 011 52 [55] 53 21 66 00
Fax: 011 52 [55] 53 21 66 65
Email: festo.mexico@mx.festo.com
www.festo.com/mx



Canada

Headquarters

Festo Inc.
5300 Explorer Drive
Mississauga, Ontario L4W 5G4
Call: 1.905.624.9000
Fax: 1.905.624.9001
Email: info.ca@ca.festo.com
www.festo.com/ca



Festo Worldwide

Argentina Australia Austria Belarus Belgium Brazil Bulgaria Canada Chile China Colombia Croatia Czech Republic Denmark
Estonia Finland France Germany Great Britain Greece Hong Kong Hungary India Indonesia Iran Ireland Israel Italy Japan
Latvia Lithuania Malaysia Mexico Netherlands New Zealand Norway Peru Philippines Poland Romania Russia Serbia Singapore
Slovakia Slovenia South Africa South Korea Spain Sweden Switzerland Taiwan Thailand Turkey Ukraine United States Venezuela

www.festo.com