

Pressure regulators MS-LR, MS series, NPT

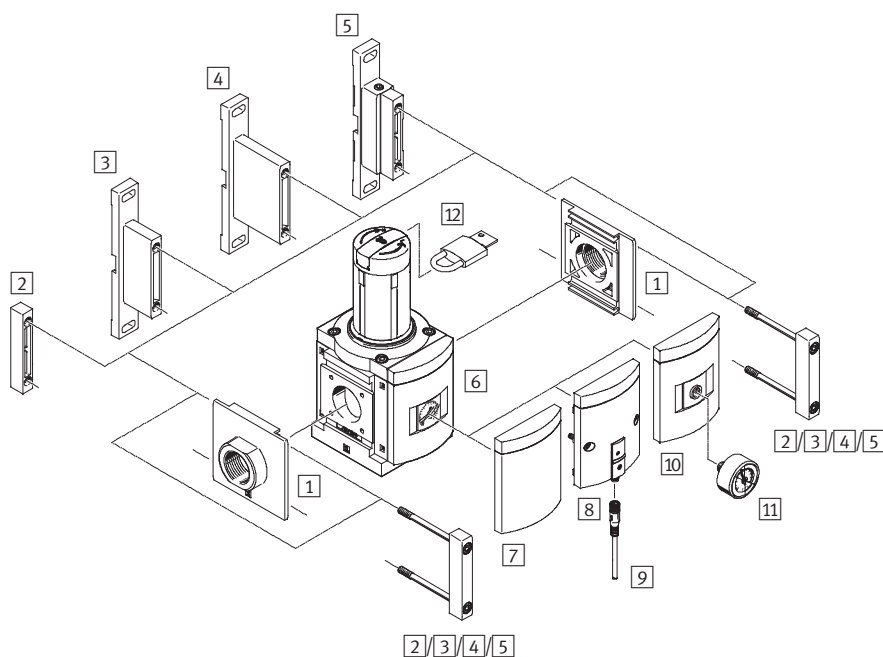
FESTO



Pressure regulators MS9-LR, MS series, NPT

Peripherals overview

FESTO



 Note

Additional accessories:

- Module connector for combinations with size MS6, MS9 or MS12
- Internet: rmv, armv

Mounting attachments and accessories					
		Individual unit		Combination	➔ Page/Internet
		Without connecting thread	With connecting thread NPT¾-14 or NPT1-11½		
1	Connecting plate MS9-AQ...	■	–	■	ms9-aq
2	Module connector MS9-MV	■	–	■	ms9-mv
3	Mounting bracket MS9-WP	■	■	■	ms9-wp
4	Mounting bracket MS9-WPB	■	■	■	ms9-wp
5	Mounting bracket MS9-WPM	■	–	■	ms9-wp
6	MS pressure gauge AG	■	■	■	10
7	Cover plate VS	■	■	■	10
8	Pressure sensor without display AD7 ... AD10	■	■	■	10
9	Connecting cable NEBU-M8...-LE3	■	■	■	12
10	Adapter plate for EN pressure gauge ¼ A4	■	■	■	10
11	Pressure gauge MA	■	■	■	12
12	Padlock LRVS-D	■	■	■	12

**Variants D7, D8, PO, pilot actuated
regulator:
Available from 2nd quarter 2011**

 **New**

Pressure regulators MS9-LR, MS series, NPT

FESTO

Type codes

		MS	9	-	LR	-	NG	-	D5	-	DI	-	AG	-	PSI	-	AS
Series																	
MS	Standard service unit																
Size																	
9	Grid dimension 90 mm																
Service function																	
LR	Pressure regulator																
Connection size																	
NG	Module without connecting thread, without connecting plate																
Pressure regulation range/operation																	
D5	0.3 ... 4 bar, manually operated																
D6	0.3 ... 7 bar, manually operated																
D7	0.5 ... 12 bar, manually operated																
Alternative actuation principle																	
	Piloted																
DI	Directly actuated (only with pressure regulation range D5/D6)																
Pressure gauge																	
AG	MS pressure gauge																
Pressure gauge scale																	
PSI	Psi																
Security																	
AS	Rotary knob with detent, can be locked using accessories																

Additional variants can be ordered using the modular product system → 10

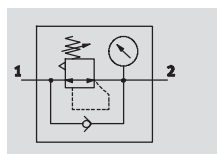
- Connecting plates
- Pressure regulation range
- Pressure gauge alternatives
- Alternative pressure gauge scale
- Secondary venting
- Security lock
- Type of mounting
- Alternative flow direction




Pressure regulators MS9-LR, MS series, NPT

Technical data

FESTO

With pressure gauge



-  - Flow rate
5,000 ... 26,500 l/min
-  - Temperature range
-10 ... +60 °C
-  - Supply pressure
0.8 ... 20 bar



The pressure regulator maintains a constant working pressure (secondary side), regardless of the pressure variations in the system (primary side) and the air consumption.

- Good regulation characteristics with low hysteresis and primary pressure compensation
- High flow rate with minimal pressure drop
- Piloted or directly actuated diaphragm regulator
- Four pressure regulation ranges: 0.3 ... 4 bar, 0.3 ... 7 bar, 0.5 ... 12 bar and 0.5 ... 16 bar
- Available with or without secondary venting
- Actuator lock to protect set values against adjustment
- Return flow option for exhausting from output port 2 to output port 1 already integrated
- Optional pressure sensor

General technical data				
Pneumatic connection 1, 2		NPT3/4-14	NPT1-11½	NPT1½-14 ... NPT1½-11½ (with connecting plate AQ...) – (without connecting thread NG)
Design		Piloted diaphragm regulator		
		Directly actuated diaphragm regulator		
Regulator type	Piloted	Output pressure constant, with return flow action, with primary pressure compensation, with secondary venting		
	Directly actuated	Output pressure constant, with return flow action, with/without secondary venting		
Type of mounting		Via accessories		
		In-line installation		
		Front panel mounting		
Mounting position		Any ¹⁾		
Security		Rotary knob with detent		
		Rotary knob with detent, can be locked using accessories		
		Rotary knob with integrated lock		
Pressure regulation range/operation	D5 [bar]	0.3 ... 4, manually operated		
	D6 [bar]	0.3 ... 7, manually operated		
	D7 [bar]	0.5 ... 12, manually operated (0.5 ... 10 with pressure sensor variant AD...)		
	D8 [bar]	0.5 ... 16, manually operated (0.5 ... 10 with pressure sensor variant AD...)		
	PO [bar]	Max. 16, pneumatically actuated		
Max. pressure hysteresis [bar]		0.3		
Pressure display		Via pressure sensor for displaying output pressure via operational status indicator and electrical output		
		Via pressure gauge for displaying output pressure		
		Via pressure gauge with red/green scale for displaying output pressure		
		G¼ prepared		

1) The branching module must be mounted vertically when combined with a pressure sensor as condensate must not collect in the pressure sensor.

Variants D7, D8, PO, pilot actuated regulator: **Available from 2nd quarter 2011**

 **New**

Pressure regulators MS9-LR, MS series, NPT

FESTO

Technical data

Standard nominal flow rate $q_{nN}^{1)}$ [l/min]			
Pneumatic connection		With connecting thread NPT $\frac{3}{4}$ -14 With connecting plate AQR, AQS	With connecting thread NPT1-1 $\frac{1}{2}$ With connecting plate AQT, AQU, AQV
Directly actuated diaphragm regulator DI			
Pressure regulation	D5	6,500 \pm 15% ²⁾	12,000 \pm 15% ²⁾
range	D6	6,500 \pm 15%	9,000 \pm 15%

1) Measured at $p_1 = 10$ bar and $p_2 = 6$ bar, $\Delta p = 1$ bar

2) Measured at $p_1 = 10$ bar and $p_2 = 4$ bar, $\Delta p = 1$ bar

Operating and environmental conditions		
Variant	Standard	Pressure sensor AD...
Supply pressure [bar]	0.8 ... 20	0.8 ... 20
Operating medium	Air quality class 5:7- to DIN ISO 8573-1	Filtered compressed air, lubricated or unlubricated, grade of filtration 40 μ m
Ambient temperature [°C]	-10 ... +60	0 ... +50
Temperature of medium [°C]	-10 ... +60	0 ... +50
Storage temperature [°C]	-10 ... +60	-10 ... +60
Corrosion resistance class CRC ¹⁾	2	

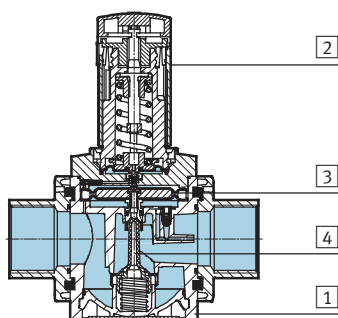
1) Corrosion resistance class 2 according to Festo standard 940 070

Components subject to moderate corrosion stress. Externally visible parts with primarily decorative surface requirements which are in direct contact with a normal industrial environment or media such as coolants or lubricating agents.

Weight [g]	
Pressure regulator	1,400
Pressure regulator with rotary knob with integrated lock E11	1,700

Materials

Sectional view



Pressure regulator		
1	Housing	Die-cast aluminium
2	Rotary knob	PA
	Rotary knob with integrated lock E11	Aluminium
3	Diaphragm	NBR
4	Valve stem	Wrought aluminium alloy, NBR, POM
-	Cover	PA reinforced
-	Connecting plate, module connector, mounting bracket	Die-cast aluminium
-	Seals	NBR
Note on materials		RoHS-compliant

Pressure regulators MS9-LR, MS series, NPT

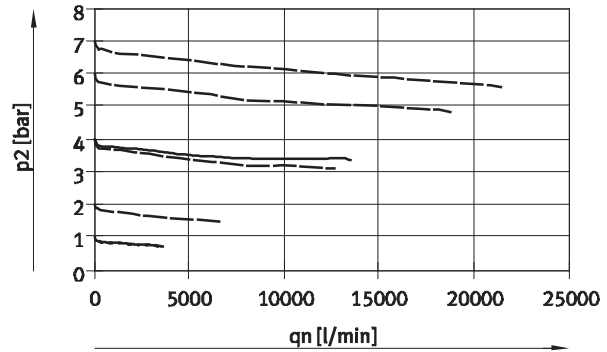
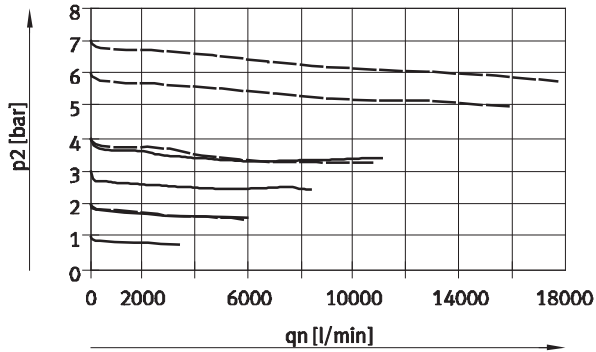
Technical data

FESTO

Standard flow rate q_n as a function of output pressure p_2 at supply pressure $p_1 = 10$ bar

MS9-LR-N $\frac{3}{4}$

MS9-LR-N1

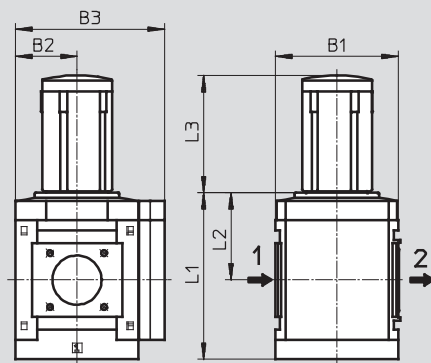


— D5: 0.3 ... 4 bar
- - - D6: 0.3 ... 7 bar

Dimensions – Basic version

Download CAD data → www.festo.com

Without connecting thread NG, rotary knob with detent



→ Flow direction

Type	B1	B2	B3	L1	L2	L3
MS9-LR-NG	90	45	109	122	64	86

**Variants D7, D8, PO, pilot actuated
regulator:
Available from 2nd quarter 2011**

 **New**

Pressure regulators MS9-LR, MS series, NPT

Technical data

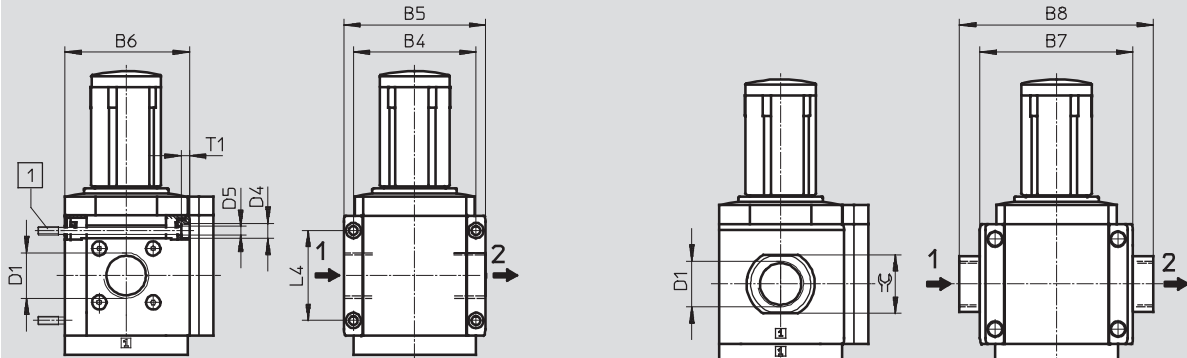
FESTO

Dimensions – Connecting thread/connecting plate

Download CAD data → www.festo.com

With connecting thread N $\frac{3}{4}$ or N1

With connecting plate AQ...



1 Mounting screw M6xmin.90 to DIN 912 (not included in the scope of delivery) for wall mounting without mounting bracket

→ Flow direction

Type	B4	B5	B6	B7	B8	D1	D4	D5	L4	T1	≙
MS9-LR-N $\frac{3}{4}$	90	104	91.5	-	-	NPT $\frac{3}{4}$ -14	11	6.5	66	6	-
MS9-LR-N1						NPT1-11 $\frac{1}{2}$					
MS9-LR-AQR	-	-	-	112	132	NPT $\frac{1}{2}$ -14	-	-	-	-	30
MS9-LR-AQS					132	NPT $\frac{3}{4}$ -14					36
MS9-LR-AQT					142	NPT1-11 $\frac{1}{2}$					41
MS9-LR-AQU					162	NPT1 $\frac{1}{4}$ -11 $\frac{1}{2}$					50
MS9-LR-AQV					176	NPT1 $\frac{1}{2}$ -11 $\frac{1}{2}$					55

Pressure regulators MS9-LR, MS series, NPT

Technical data

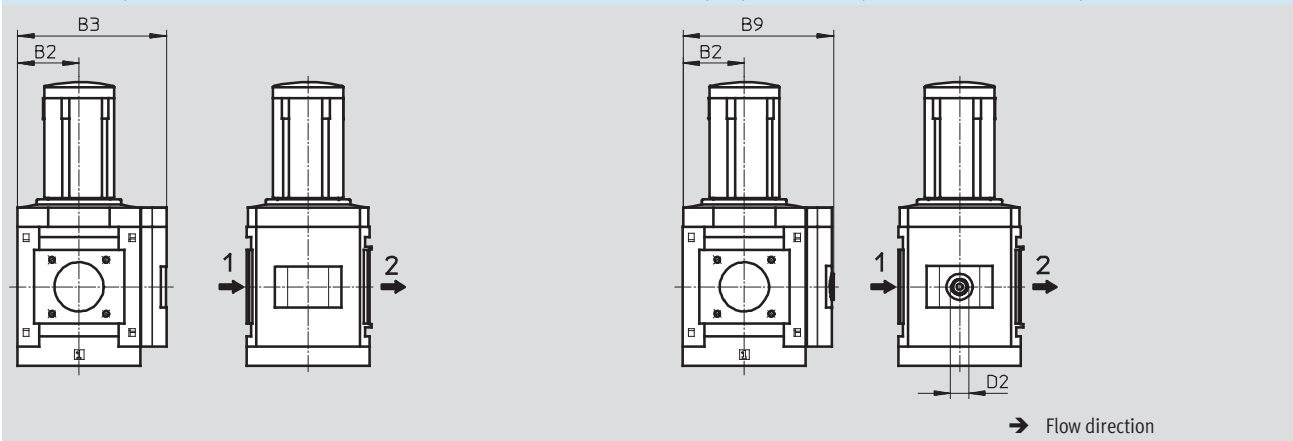
FESTO

Dimensions – Pressure gauge alternatives

Download CAD data → www.festo.com

Integrated MS pressure gauge with standard scale AG or red/green scale RG

Adapter plate A4 for EN pressure gauge 1/4, without pressure gauge

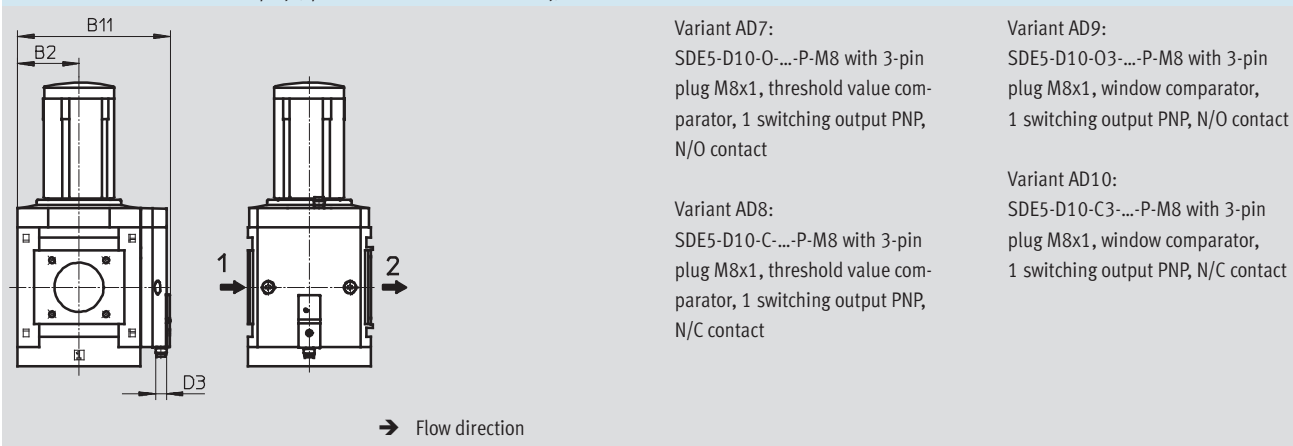


Type	B2	B3	B9	D2
MS9-LR-...-AG/RG	45	109	–	–
MS9-LR-...-A4		–	110	G1/4

Dimensions – Pressure gauge alternatives

Download CAD data → www.festo.com

Pressure sensor without LCD display (operational status indicator only) AD7 ... AD10

Technical data → Internet: [sde5](http://sde5.festo.com)


Type	B2	B11	D3
MS9-LR-...-AD7/AD8/AD9/AD10	45	112	M8

**Variants D7, D8, PO, pilot actuated
regulator:
Available from 2nd quarter 2011**

 **New**

Pressure regulators MS9-LR, MS series, NPT

FESTO

Technical data

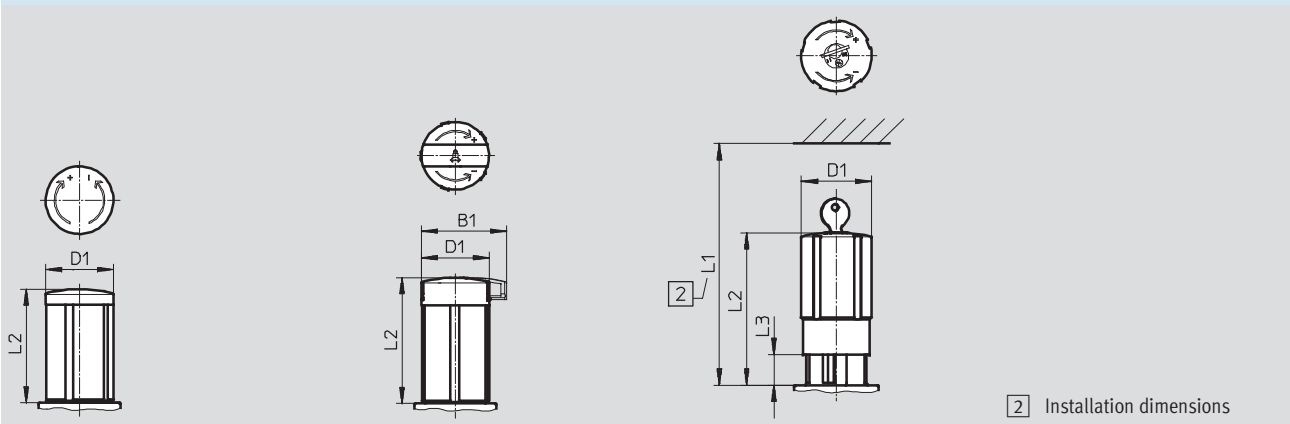
Dimensions – Rotary knob

Download CAD data → www.festo.com

Rotary knob with detent

Rotary knob with detent, can be
locked using accessories AS

Rotary knob with integrated lock
E11



Type	B1	D1	L1	L2	L3
MS9-LR	–	52	–	86	–
MS9-LR-...-AS	65	52	–	96	–
MS9-LR-...-E11	–	52	174	114	25

Ordering data

Integrated pressure gauge, display unit [psi], rotary knob with detent, can be locked using accessories

Size	Connection	Piloted diaphragm regulator		Directly actuated diaphragm regulator	
		Part No.	Type	Part No.	Type
Pressure regulation range 0.3 ... 4 bar, manually actuated					
MS9	–	564139	MS9-LR-NG-D5-AG-PSI-AS	564140	MS9-LR-NG-D5-DI-AG-PSI-AS
Pressure regulation range 0.3 ... 7 bar, manually actuated					
MS9	–	564141	MS9-LR-NG-D6-AG-PSI-AS	564142	MS9-LR-NG-D6-DI-AG-PSI-AS
Pressure regulation range 0.5 ... 12 bar, manually actuated					
MS9	–	564143	MS9-LR-NG-D7-AG-PSI-AS	–	–

Pressure regulators MS9-LR, MS series, NPT

Ordering data – Modular products

FESTO

M Mandatory data						O Options →
Module No.	Series	Size	Function	Connection size	Pressure range/ operation	Regulator type
562530	MS	9	LR	N $\frac{3}{4}$, N1, AQR, AQS, AQT, AQU, AQV, NG	D5, D6, D7, D8, PO	DI
Ordering example						
562530	MS	9	- LR	- NG	- D5	-

Ordering table					
Grid dimension	[mm]	90	Condi- tions	Code	Enter code
M Module No.	562530				
Series	Standard			MS	MS
Size	9			9	9
Function	Pressure regulator			-LR	-LR
Connection size	Thread N $\frac{3}{4}$			-N $\frac{3}{4}$	
	Thread N1			-N1	
	Connecting plate N $\frac{1}{2}$			-AQR	
	Connecting plate N $\frac{3}{4}$			-AQS	
	Connecting plate N1			-AQT	
	Connecting plate N1 $\frac{1}{4}$			-AQU	
	Connecting plate N1 $\frac{1}{2}$			-AQV	
	Module without connecting thread, without connecting plate			-NG	
Pressure range/operation	0.3 ... 4 bar, manually operated			-D5	
	0.3 ... 7 bar, manually operated			-D6	
	0.5 ... 12 bar, manually operated			-D7	
	0.5 ... 16 bar, manually operated			-D8	
	Max. 16 bar, pneumatically actuated (pressure range defined by means of pilot regulator)		1	-PO	
O Regulator type	Directly actuated		2	-DI	

1 PO Not with regulator type DI
Not with security AS, E11

2 DI Not with pressure range D7, D8

Transfer order code

562530 MS 9 - LR - - - -

**Variants D7, D8, PO, pilot actuated
regulator:
Available from 2nd quarter 2011**

 **New**

Pressure regulators MS9-LR, MS series, NPT

FESTO

Ordering data – Modular products

→ [M] Mandatory data		[O] Options				
Pressure gauge/ pressure gauge alternatives	Alternative pres- sure gauge scale	Secondary venting	Alternative mounting position	Security	Type of mounting	Alternative flow direction
AG, VS, A4, RG, AD7 ... AD10	PSI, MPa, BAR	OS	KD	AS, E11	WP, WPM, WPB	Z
- AG	- BAR	-	-	- AS	-	-

Ordering table						
Grid dimension	[mm]	90	Condi- tions	Code		Enter code
[M] Pressure gauge/pressure gauge alternatives	MS pressure gauge	Cover plate		-AG		
		Adapter plate for EN pressure gauge 1/4, without pressure gauge		-A4		
		Integrated pressure gauge, red/green scale	[3]	-RG		
		Pressure sensor without display, plug M8, threshold value comparator, PNP, N/O contact	[4]	-AD7		
		Pressure sensor without display, plug M8, threshold value comparator, PNP, N/C contact	[4]	-AD8		
		Pressure sensor without display, plug M8, window comparator, PNP, N/O contact	[4]	-AD9		
		Pressure sensor without display, plug M8, window comparator, PNP, N/C contact	[4]	-AD10		
	Alternative pressure gauge scale	Psi	[5]	-PSI		
		MPa	[5]	-MPA		
		Bar	[5]	-BAR		
[O] Secondary venting	Without secondary venting		[6]	-OS		
Alternative mounting position	Rotary knob underneath (connection underneath with PO)			-KD		
Security	Can be locked using accessories			-AS		
	With integrated lock			-E11		
Type of mounting	Mounting bracket		[7]	-WP		
	Mounting bracket		[7]	-WPM		
	Mounting bracket for large wall gap		[7]	-WPB		
Alternative flow direction	Flow direction from right to left			-Z		

- [3] RG** Not with alternative pressure gauge scale PSI,
PSI scale serves only as an auxiliary scale
- [4] AD7 ... AD10** Measuring range max. 10 bar
- [5] PSI, MPA, BAR** Not with pressure gauge alternatives VS, A4, AD7, AD8, AD9, AD10

- [6] OS** Only with regulator type DI
- [7] WP, WPM, WPB** Not with module NG


Transfer order code



- - - - - - -



Pressure regulators MS-LR, MS series, NPT

FESTO


Accessories

Ordering data – Pressure gauge MA						
	Nominal size	Pneumatic connection	Indicating range		Part No.	Type
			[bar]	[psi]		
	Pressure gauge MA, EN 837-1				Technical data ➔ Internet: ma	
	40	R¼	0 ... 16	0 ... 232	187080	MA-40-16-R¼-EN
			0 ... 25	0 ... 360	187081	MA-40-25-R¼-EN
		G¼	0 ... 16	0 ... 232	183901	MA-40-16-G¼-EN
			0 ... 25	0 ... 360	183902	MA-40-25-G¼-EN
	Pressure gauge MA, EN 837-1, with red/green range				Technical data ➔ Internet: ma	
	40	R⅛	0 ... 16	–	525726	MA-40-16-R⅛-E-RG
	50	R¼	0 ... 16	–	525729	MA-50-16-R¼-E-RG
Precision pressure gauge MAP, EN 837-1				Technical data ➔ Internet: map		
40	R⅛	0 ... 1	0 ... 15	161126	MAP-40-1-⅛-EN	
		0 ... 4	0 ... 58	162842	MAP-40-4-⅛-EN	
		0 ... 6	0 ... 87	161127	MAP-40-6-⅛-EN	
		0 ... 16	0 ... 232	161128	MAP-40-16-⅛-EN	

Ordering data – Connecting cable NEBU-M8					Technical data → Internet: nebu
	Electrical connection	Number of wires	Cable length [m]	Part No.	Type
	M8x1, straight socket	3	2.5	541333	NEBU-M8G3-K-2.5-LE3
			5	541334	NEBU-M8G3-K-5-LE3
	M8x1, angled socket	3	2.5	541338	NEBU-M8W3-K-2.5-LE3
			5	541341	NEBU-M8W3-K-5-LE3

Ordering data – Connecting cable NEBU-M12					Technical data → Internet: nebu
	Electrical connection	Number of wires	Cable length [m]	Part No.	Type
	M12x1, straight socket	4	2.5	550326	NEBU-M12G5-K-2.5-LE4
			5	541328	NEBU-M12G5-K-5-LE4
		5	2.5	541330	NEBU-M12G5-K-2.5-LE5
			5	541331	NEBU-M12G5-K-5-LE5
	M12x1, angled socket	4	2.5	550325	NEBU-M12W5-K-2.5-LE4
			5	541329	NEBU-M12W5-K-5-LE4

Ordering data – Sensor socket SIE-GD				Technical data → Internet: sie-gd
	Electrical connection	Part No.	Type	
	M12x1, 4-pin	18494	SIE-GD	

Ordering data – Angled plug socket SIE-WD				Technical data → Internet: sie-wd
	Electrical connection	Part No.	Type	
	M12x1, 4-pin	12956	SIE-WD-TR	

Ordering data – Padlock LRVS-D				
	Weight [g]	Part No.	Type	
	120	193786	LRVS-D	

Product Range and Company Overview

A Complete Suite of Automation Services

Our experienced engineers provide complete support at every stage of your development process, including: conceptualization, analysis, engineering, design, assembly, documentation, validation, and production.



Custom Automation Components
Complete custom engineered solutions



Custom Control Cabinets
Comprehensive engineering support and on-site services



Complete Systems
Shipment, stocking and storage services

The Broadest Range of Automation Components

With a comprehensive line of more than 30,000 automation components, Festo is capable of solving the most complex automation requirements.



Electromechanical
Electromechanical actuators, motors, controllers & drives



Pneumatics
Pneumatic linear and rotary actuators, valves, and air supply



PLCs and I/O Devices
PLC's, operator interfaces, sensors and I/O devices

Supporting Advanced Automation... As No One Else Can!

Festo is a leading global manufacturer of pneumatic and electromechanical systems, components and controls for industrial automation, with more than 12,000 employees in 56 national headquarters serving more than 180 countries. For more than 80 years, Festo has continuously elevated the state of manufacturing with innovations and optimized motion control solutions that deliver higher performing, more profitable automated manufacturing and processing equipment. Our dedication to the advancement of automation extends beyond technology to the education and development of current and future automation and robotics designers with simulation tools, teaching programs, and on-site services.

Quality Assurance, ISO 9001 and ISO 14001 Certifications

Festo Corporation is committed to supply all Festo products and services that will meet or exceed our customers' requirements in product quality, delivery, customer service and satisfaction.

To meet this commitment, we strive to ensure a consistent, integrated, and systematic approach to management that will meet or exceed the requirements of the ISO 9001 standard for Quality Management and the ISO 14001 standard for Environmental Management.



© Copyright 2008, Festo Corporation. While every effort is made to ensure that all dimensions and specifications are correct, Festo cannot guarantee that publications are completely free of any error, in particular typing or printing errors. Accordingly, Festo cannot be held responsible for the same. For Liability and Warranty conditions, refer to our "Terms and Conditions of Sale", available from your local Festo office. All rights reserved. No part of this publication may be reproduced, distributed, or transmitted in any form or by any means, electronic, mechanical, photocopying or otherwise, without the prior written permission of Festo. All technical data subject to change according to technical update.



Printed on recycled paper at New Horizon Graphic, Inc., FSC certified as an environmentally friendly printing plant.

Festo North America

Festo Regional Contact Center

5300 Explorer Drive
Mississauga, Ontario L4W 5G4
Canada

USA Customers:

For ordering assistance,

Call: 1.800.99.FESTO (1.800.993.3786)

Fax: 1.800.96.FESTO (1.800.963.3786)

Email: customer.service@us.festo.com

For technical support,

Call: 1.866.GO.FESTO (1.866.463.3786)

Fax: 1.800.96.FESTO (1.800.963.3786)

Email: product.support@us.festo.com

Canadian Customers:

Call: 1.877.GO.FESTO (1.877.463.3786)

Fax: 1.877.FX.FESTO (1.877.393.3786)

Email: festo.canada@ca.festo.com

USA Headquarters

Festo Corporation
395 Moreland Road
P.O. Box 18023
Hauppauge, NY 11788, USA
www.festo.com/us

USA Sales Offices

Appleton

North 922 Tower View Drive, Suite N
Greenville, WI 54942, USA

Boston

120 Presidential Way, Suite 330
Woburn, MA 01801, USA

Chicago

1441 East Business Center Drive
Mt. Prospect, IL 60056, USA

Dallas

1825 Lakeway Drive, Suite 600
Lewisville, TX 75057, USA

Detroit – Automotive Engineering Center

2601 Cambridge Court, Suite 320
Auburn Hills, MI 48326, USA

New York

395 Moreland Road
Hauppauge, NY 11788, USA

Silicon Valley

4935 Southfront Road, Suite F
Livermore, CA 94550, USA

United States



USA Headquarters, East: Festo Corp., 395 Moreland Road, Hauppauge, NY 11788
Phone: 1.631.435.0800; Fax: 1.631.435.8026;
Email: info@festo-usa.com www.festo.com/us

Canada



Headquarters: Festo Inc., 5300 Explorer Drive, Mississauga, Ontario L4W 5G4
Phone: 1.905.624.9000; Fax: 1.905.624.9001;
Email: festo.canada@ca.festo.com www.festo.ca

Mexico



Headquarters: Festo Pneumatic, S.A., Av. Ceylán 3, Col. Tequesquahuac,
54020 Tlalneapantla, Edo. de México
Phone: 011 52 [55] 53 21 66 00; Fax: 011 52 [55] 53 21 66 65;
Email: festo.mexico@mx.festo.com www.festo.com/mx

Central USA

Festo Corporation
1441 East Business
Center Drive
Mt. Prospect, IL 60056, USA
Phone: 1.847.759.2600
Fax: 1.847.768.9480



Western USA

Festo Corporation
4935 Southfront Road,
Suite F
Livermore, CA 94550, USA
Phone: 1.925.371.1099
Fax: 1.925.245.1286



Festo Worldwide

Argentina Australia Austria Belarus Belgium Brazil Bulgaria Canada Chile China Colombia Croatia Czech Republic Denmark
Estonia Finland France Germany Great Britain Greece Hong Kong Hungary India Indonesia Iran Ireland Israel Italy Japan Latvia
Lithuania Malaysia Mexico Netherlands New Zealand Norway Peru Philippines Poland Romania Russia Serbia Singapore
Slovakia Slovenia South Africa South Korea Spain Sweden Switzerland Taiwan Thailand Turkey Ukraine United States Venezuela

www.festo.com