

Vacuum efficiency valves ISV

FESTO



Vacuum efficiency valves ISV

Features

FESTO

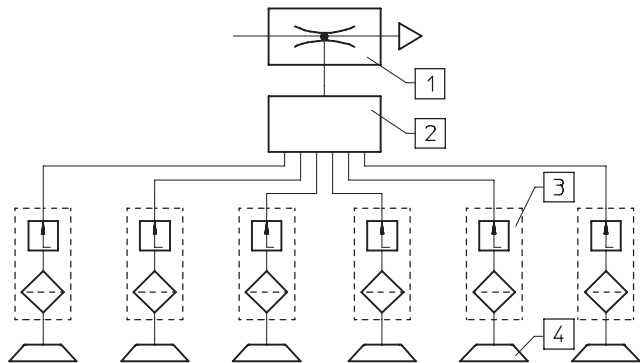
Areas of application

- For parallel arrangement of several suction cups
 - To prevent dissipation of the vacuum if one or several suction cups do not make full contact
- Gripping of randomly placed products
- Saves compressed air and energy
 - Retention is only successful if 100% contact is achieved
- Maintains vacuum

Function diagram

These valves are suitable for applications requiring several vacuum suction cups and for the maintenance of vacuum in the event that one suction cup should fail to make contact.

- 1 Vacuum generator
- 2 Distributor
- 3 Vacuum efficiency valve
- 4 Suction cup



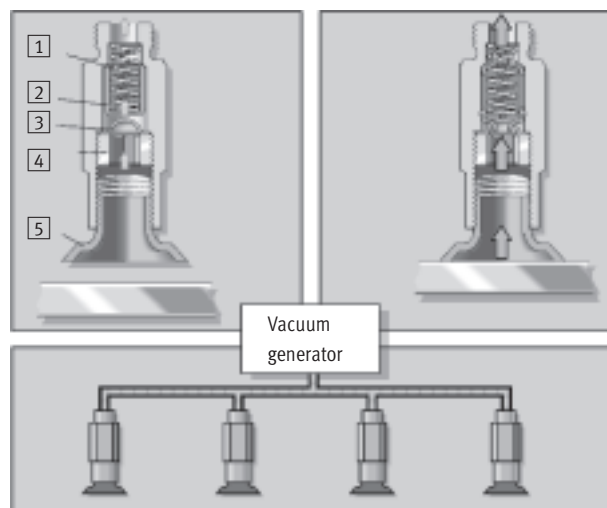
Vacuum efficiency valve function

The ISV valve is fitted between the vacuum generator and the suction cup. If, during vacuum generation, a suction cup is uncovered, or only partly covered, the ISV automatically stops the influx of air.

When the suction cup fits tightly against the surface, a vacuum is regenerated. Removal of the object from the suction cup causes the ISV valve to close immediately.

1. When the suction cup is open to atmosphere, the float is drawn back against the housing. In this position, flow is only possible through the small hole in the end of the float.
2. When an object is in contact with the suction cup, flow is reduced and the spring forces the float forward. The seal is thus broken and full vacuum is generated within the suction cup.

- 1 Spring
- 2 Float
- 3 Filter
- 4 Retaining screw
- 5 Suction cup

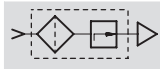


Vacuum efficiency valves ISV

Technical data

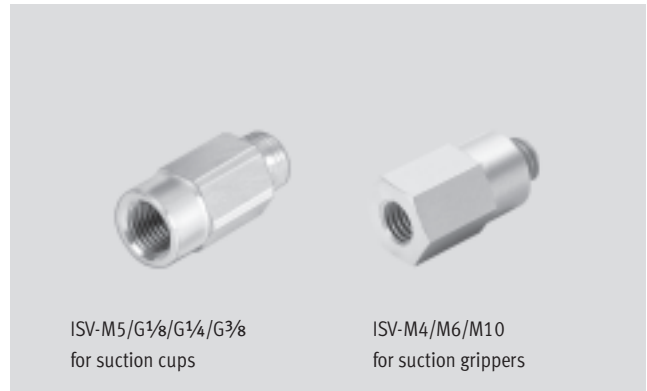
FESTO

Function



Temperature range
-10 ... +60 °C

Operating pressure
-0.95 ... 0 bar



ISV-M5/G1/8/G1/4/G3/8
for suction cups

ISV-M4/M6/M10
for suction grippers

General technical data							
Size	For suction cups				For suction grippers		
	M5	G1/8	G1/4	G3/8	M4	M6	M10
Operating medium	Atmospheric air						
Mounting position	Any						
Type of mounting	Screw-in						
Pneumatic connection	M5	G1/8	G1/4	G3/8	M4	M6	M10
Operating pressure [bar]	-0.95 ... 0						
Ejector pulse possibility [bar]	≤ 8						
Required suction rate at -0.5 bar [l/min]	1	2	1.6	1.5	1	2	2

Ambient conditions							
Size	For suction cups				For suction grippers		
	M5	G1/8	G1/4	G3/8	M4	M6	M10
Ambient temperature [°C]	-10 ... +60						
Corrosion resistance CRC ¹⁾	2						

1) Corrosion resistance class 2 according to Festo standard 940 070

Components requiring moderate corrosion resistance. Externally visible parts with primarily decorative surface requirements which are in direct contact with a surrounding industrial atmosphere or media such as cooling or lubricating agents.

Weights [g]							
Size	For suction cups				For suction grippers		
	M5	G1/8	G1/4	G3/8	M4	M6	M10
ISV-...	4	9	16	33	1.5	14	18

Materials							
Size	For suction cups				For suction grippers		
	M5	G1/8	G1/4	G3/8	M4	M6	M10
Housing	Wrought aluminium alloy				Wrought aluminium alloy		
Filter	Sintered bronze ¹⁾	Wrought aluminium alloy, stainless steel mesh			Sintered bronze		
Spring	-	High-alloy stainless steel			-	High-alloy stainless steel	
Hollow bolt	-	Wrought aluminium alloy			-		
Float	-	Polyacetate			-	Polyacetate	

1) Filter ISV-M5-CT made of sintered steel

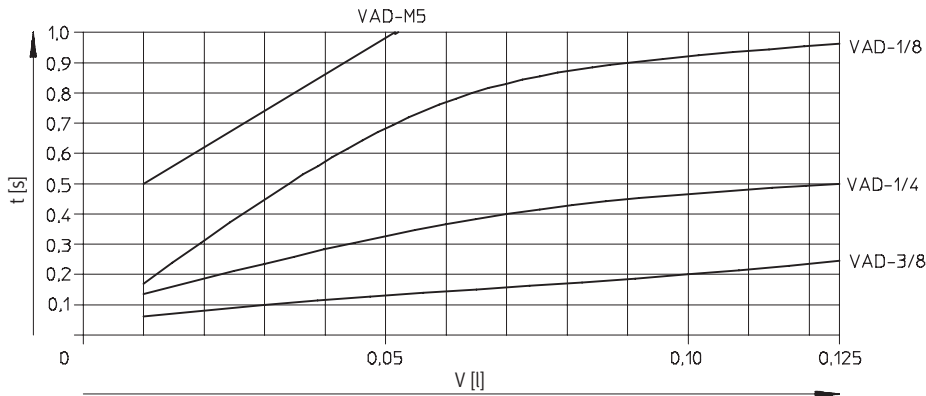
Vacuum efficiency valves ISV

Technical data

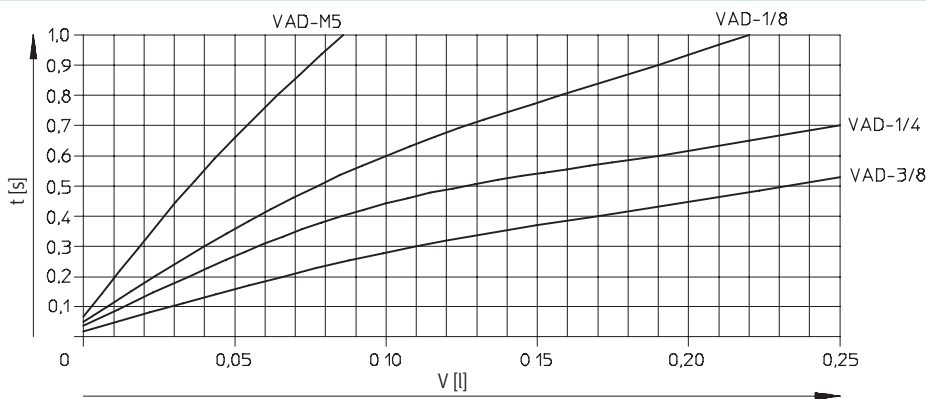
FESTO

Evacuation time t as a function of the volume to be evacuated V with various ejectors

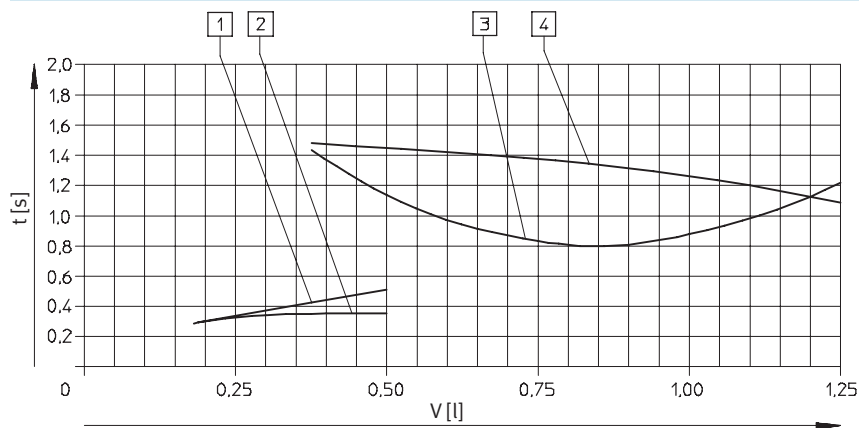
ISV-...-M5



ISV-...-1/8/ISV-...-1/4



ISV-...-3/8



- 1 VAD-...-3/8 with flat suction cup VAS-125-...
- 2 VAD-ME-...-3/8 with flat suction cup VASB-125-...
- 3 VAD-...-3/8 with bellows suction cup VASB-125-...
- 4 VAD-ME-...-3/8 with bellows suction cup VASB-125-...

- Note

Evacuation time is the time required to attain 90% maximum possible vacuum.

Vacuum efficiency valves ISV

Technical data

FESTO

Conditions for operation of the vacuum efficiency valve ISV

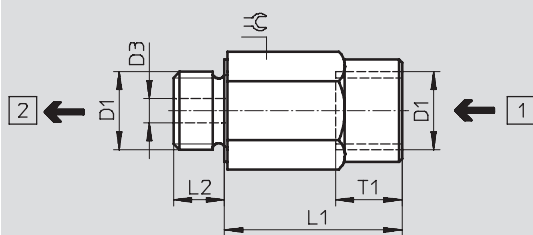
- The number of vacuum suction cups that can be attached depends upon the suction capacity of the ejector.
- A minimum switching flow rate is required to ensure the function of each ISV vacuum efficiency valve connected in parallel to an ejector.
- The number of cups which can be reliably operated can be estimated on the basis of the ratio of ejector suction power and the minimum switching flow rate of the ISV vacuum efficiency valve.

Max. no. of sealed suction cups as a function of the vacuum generator used and the attainable vacuum level

Vacuum generator	Max. number of suction cups at P _u [bar]											
	ISV-M5			ISV-1/8			ISV-1/4			ISV-3/8		
	-0.5	-0.6	-0.7	-0.5	-0.6	-0.7	-0.5	-0.6	-0.7	-0.5	-0.6	-0.7
VAD-M5	2	1	–	1	1	–	1	–	–	–	–	–
VAD-1/8	4	2	1	2	1	–	2	1	–	–	–	–
VAD-1/4	8	6	3	4	3	1	4	3	1	–	–	–
VAD-3/8	8	8	7	7	6	3	7	6	3	–	2	1
VADM/VADMI-45	2	1	–	1	1	–	1	–	–	–	–	–
VADM/VADMI-70	4	2	1	2	1	–	2	1	–	–	–	–
VADM/VADMI-95	8	6	3	4	3	1	4	2	1	–	–	–
VADM/VADMI-140	8	8	7	7	6	3	7	6	3	3	2	1
VADM/VADMI-200	16	16	14	14	12	6	14	12	6	6	4	2
VADM/VADMI-300	32	32	28	28	24	12	28	14	12	12	8	4

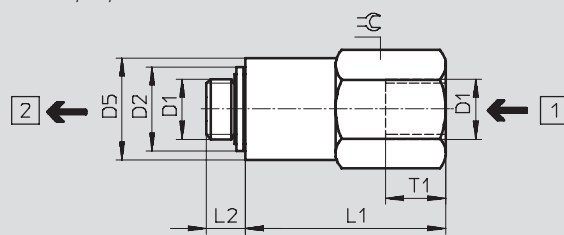
Dimensions

ISV-...



- 1 Suction side
2 Tubing side

ISV-M4/M6/M10



Type	D1	D2 Ø	D3 Ø	D5 Ø	L1	L2	T1	≡
ISV-M5	M5	–	2	–	10	5	5.5	8
ISV-1/8	G1/8	–	4	–	29.5	6.5	11	13
ISV-1/4	G1/4	–	4	–	30	8	11	17
ISV-3/8	G3/8	–	4	–	30	9	13	22
ISV-M4	M4	7.6	–	7	10.7	3.8	5	7
ISV-M6	M6	8.4	–	14	28.3	5	5	14
ISV-M10	M10	14	–	17	32	6.5	10	17

Ordering data

Pneumatic connection	For suction cups		Pneumatic connection	For suction grippers	
	Part No.	Type		Part No.	Type
M5	151217	ISV-M5	M4	545996	ISV-M4
G1/8	33969	ISV-1/8	M6	545997	ISV-M6
G1/4	33970	ISV-1/4	M10	545998	ISV-M10
G3/8	33971	ISV-3/8			

Product Range and Company Overview

A Complete Suite of Automation Services

Our experienced engineers provide complete support at every stage of your development process, including: conceptualization, analysis, engineering, design, assembly, documentation, validation, and production.



Custom Automation Components
Complete custom engineered solutions



Custom Control Cabinets
Comprehensive engineering support and on-site services



Complete Systems
Shipment, stocking and storage services

The Broadest Range of Automation Components

With a comprehensive line of more than 30,000 automation components, Festo is capable of solving the most complex automation requirements.



Electromechanical
Electromechanical actuators, motors, controllers & drives



Pneumatics
Pneumatic linear and rotary actuators, valves, and air supply



PLCs and I/O Devices
PLC's, operator interfaces, sensors and I/O devices

Supporting Advanced Automation... As No One Else Can!

Festo is a leading global manufacturer of pneumatic and electromechanical systems, components and controls for industrial automation, with more than 12,000 employees in 56 national headquarters serving more than 180 countries. For more than 80 years, Festo has continuously elevated the state of manufacturing with innovations and optimized motion control solutions that deliver higher performing, more profitable automated manufacturing and processing equipment. Our dedication to the advancement of automation extends beyond technology to the education and development of current and future automation and robotics designers with simulation tools, teaching programs, and on-site services.

Quality Assurance, ISO 9001 and ISO 14001 Certifications

Festo Corporation is committed to supply all Festo products and services that will meet or exceed our customers' requirements in product quality, delivery, customer service and satisfaction.

To meet this commitment, we strive to ensure a consistent, integrated, and systematic approach to management that will meet or exceed the requirements of the ISO 9001 standard for Quality Management and the ISO 14001 standard for Environmental Management.



© Copyright 2008, Festo Corporation. While every effort is made to ensure that all dimensions and specifications are correct, Festo cannot guarantee that publications are completely free of any error, in particular typing or printing errors. Accordingly, Festo cannot be held responsible for the same. For Liability and Warranty conditions, refer to our "Terms and Conditions of Sale", available from your local Festo office. All rights reserved. No part of this publication may be reproduced, distributed, or transmitted in any form or by any means, electronic, mechanical, photocopying or otherwise, without the prior written permission of Festo. All technical data subject to change according to technical update.



Printed on recycled paper at New Horizon Graphic, Inc., FSC certified as an environmentally friendly printing plant.

Festo North America

Festo Regional Contact Center

5300 Explorer Drive
Mississauga, Ontario L4W 5G4
Canada

USA Customers:

For ordering assistance,

Call: 1.800.99.FESTO (1.800.993.3786)

Fax: 1.800.96.FESTO (1.800.963.3786)

Email: customer.service@us.festo.com

For technical support,

Call: 1.866.GO.FESTO (1.866.463.3786)

Fax: 1.800.96.FESTO (1.800.963.3786)

Email: product.support@us.festo.com

Canadian Customers:

Call: 1.877.GO.FESTO (1.877.463.3786)

Fax: 1.877.FX.FESTO (1.877.393.3786)

Email: festo.canada@ca.festo.com

USA Headquarters

Festo Corporation
395 Moreland Road
P.O. Box 18023
Hauppauge, NY 11788, USA
www.festo.com/us

USA Sales Offices

Appleton

North 922 Tower View Drive, Suite N
Greenville, WI 54942, USA

Boston

120 Presidential Way, Suite 330
Woburn, MA 01801, USA

Chicago

1441 East Business Center Drive
Mt. Prospect, IL 60056, USA

Dallas

1825 Lakeway Drive, Suite 600
Lewisville, TX 75057, USA

Detroit – Automotive Engineering Center

2601 Cambridge Court, Suite 320
Auburn Hills, MI 48326, USA

New York

395 Moreland Road
Hauppauge, NY 11788, USA

Silicon Valley

4935 Southfront Road, Suite F
Livermore, CA 94550, USA

United States



USA Headquarters, East: Festo Corp., 395 Moreland Road, Hauppauge, NY 11788

Phone: 1.631.435.0800; Fax: 1.631.435.8026;

Email: info@festo-usa.com

www.festo.com/us

Canada



Headquarters: Festo Inc., 5300 Explorer Drive, Mississauga, Ontario L4W 5G4

Phone: 1.905.624.9000; Fax: 1.905.624.9001;

Email: festo.canada@ca.festo.com

www.festo.ca

Mexico



Headquarters: Festo Pneumatic, S.A., Av. Ceylán 3, Col. Tequesquahuac,
54020 Tlalnepantla, Edo. de México

Phone: 011 52 [55] 53 21 66 00; Fax: 011 52 [55] 53 21 66 65;

Email: festo.mexico@mx.festo.com

www.festo.com/mx

Central USA

Festo Corporation
1441 East Business
Center Drive
Mt. Prospect, IL 60056, USA
Phone: 1.847.759.2600
Fax: 1.847.768.9480



Western USA

Festo Corporation
4935 Southfront Road,
Suite F
Livermore, CA 94550, USA
Phone: 1.925.371.1099
Fax: 1.925.245.1286



Festo Worldwide

Argentina Australia Austria Belarus Belgium Brazil Bulgaria Canada Chile China Colombia Croatia Czech Republic Denmark
Estonia Finland France Germany Great Britain Greece Hong Kong Hungary India Indonesia Iran Ireland Israel Italy Japan Latvia
Lithuania Malaysia Mexico Netherlands New Zealand Norway Peru Philippines Poland Romania Russia Serbia Singapore
Slovakia Slovenia South Africa South Korea Spain Sweden Switzerland Taiwan Thailand Turkey Ukraine United States Venezuela

www.festo.com