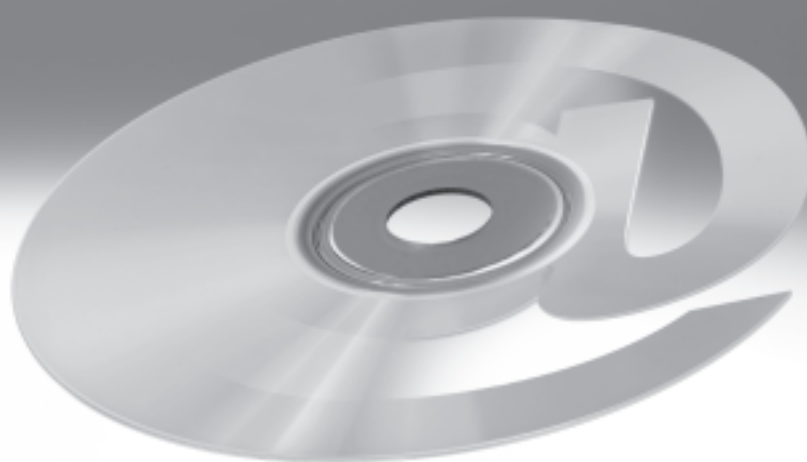


Software FluidDraw S5®

FESTO



Software FluidDraw S5®

Technical data

FESTO

Faster pneumatic circuit diagrams

Description

FluidDraw provides you with access to an extensive library of pneumatic symbols.

The DIN standardised pneumatic symbols are categorised according to drives, valves, valve terminals, compressed air preparation, vacuum technology, flow control, non-return valves, etc.

You place the required symbols in the circuit by dragging and dropping or by using the search function.

You can save recurring symbols and circuits as macros and store them in your own libraries.

Importing a Festo parts list (e.g. shopping basket) places the associated symbols on the desktop. All that remains is to arrange them and add the connecting lines. The parts list generator collects all the attributes ascribed to the symbols such as part number, designation, type, etc. in the background. These attributes can be copied from the Festo catalogue or manually assigned. The relationships between the circuit symbol and parts list item are emphasised. You can adapt the parts list layout displayed on the screen or sent to the printer as per your requirements.

The benefits to you

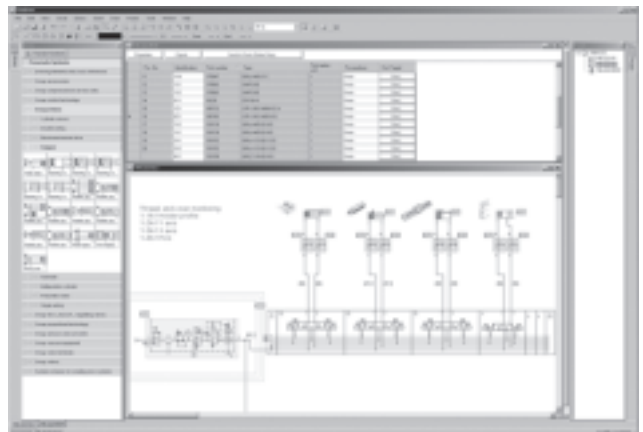
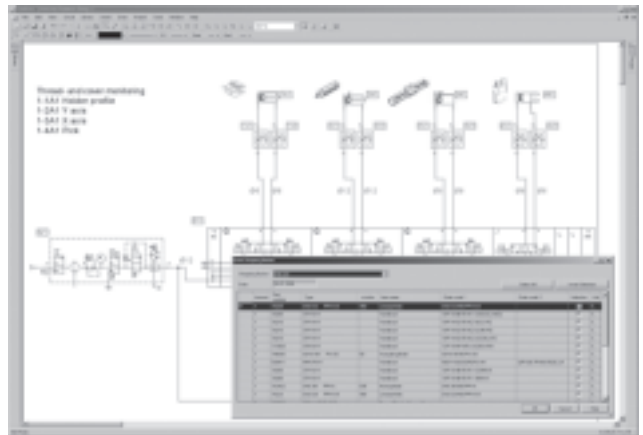
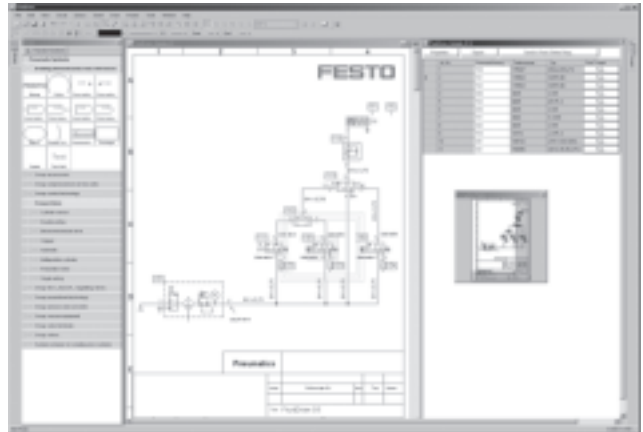
Direct access to ready-drawn symbols
Easy, user-friendly operator guidance
Interface to Festo products (catalogue, online shop)

Program components

- Comprehensive symbol library based on DIN ISO 1219-1
- Easy creation of macros
- Automatic creation of circuits for valve terminals and service unit combinations
- Insertion of picture files
- DXF/TIFF export of circuit diagrams
- DXF import
- Simultaneous editing of multiple circuit diagrams
- Equipment identifiers
- Emphasising of symbol and associated parts list item
- Convenient printing functions
- Zoom, grid, clipboard, navigation window, etc.
- Online help

System requirements

Windows 2000/XP/VISTA
≥ 512 MB RAM (2000/XP)
≥ 1 GB RAM (VISTA)



New functions

Editing

- Progressive rotation and scaling
- Intelligent grid with automatic overlaying of auxiliary lines for aligning symbols
- Improved automatic cable routing
- Manual setting of interpolation points for connecting lines
- New function to make drawing working lines easier
- Multiple window views of a drawing page can be displayed and edited at the same time
- Navigation window with selection of the page detail
- Extended drawing functions
- Simple drawing elements: lines with different arrowheads, rectangle, circle, ellipsis, text, graphic
- Simultaneous editing of the geometric properties of highlighted objects
- Extended undo/redo function
- Free input and positioning of port identifications

Parts lists

- New parts list representation
- Extended functions for selecting the listed project files
- Printing of long lists over multiple pages
- Direct editing of attributes in the parts list
- Search function for components associated with the respective list entry
- Interface to the Festo online shopping basket


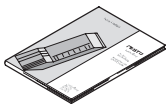

Projects

- Clearer representation of the project files
- Improved administration of the project attributes
- Copying of the globally defined drawing frame to new pages

General

- Greater drawing precision, greater zoom scale as a result (max. 10,000 %)
- New file format in XML syntax
- Extended administration functions for user-specific symbol libraries
- More efficient storage of libraries (better performance in the network)
- Consistent separation of program and user files (fewer problems with permissions in the network)
- Explicit specification of folder paths (no hidden INI entries required)
- Better utilisation of multi-processor systems through the use of background processes
- All attribute values can be displayed at any position as text references
- Support for up to 255 drawing levels
- No internal restriction on the number of objects (support for more extensive circuits/larger projects)
- Direct access to the databases of the Festo catalogue (avoids interface problems with xDKI)
- More precise definition of the page boundaries when printing

Ordering data

		Part No.	Type
	Software	560858	GSWF-CD-FD-S5-L1-ML
	Manual	560859	GDCW-GSWF-FD-S5-DE
	Software and manual	560860	GSWF-SP-FD-S5-L1-DE

Product Range and Company Overview

A Complete Suite of Automation Services

Our experienced engineers provide complete support at every stage of your development process, including: conceptualization, analysis, engineering, design, assembly, documentation, validation, and production.



Custom Automation Components

Complete custom engineered solutions



Custom Control Cabinets

Comprehensive engineering support and on-site services



Complete Systems

Shipment, stocking and storage services

The Broadest Range of Automation Components

With a comprehensive line of more than 30,000 automation components, Festo is capable of solving the most complex automation requirements.



Electromechanical

Electromechanical actuators, motors, controllers & drives



Pneumatics

Pneumatic linear and rotary actuators, valves, and air supply



PLCs and I/O Devices

PLC's, operator interfaces, sensors and I/O devices

Supporting Advanced Automation... As No One Else Can!

Festo is a leading global manufacturer of pneumatic and electromechanical systems, components and controls for industrial automation, with more than 12,000 employees in 56 national headquarters serving more than 180 countries. For more than 80 years, Festo has continuously elevated the state of manufacturing with innovations and optimized motion control solutions that deliver higher performing, more profitable automated manufacturing and processing equipment. Our dedication to the advancement of automation extends beyond technology to the education and development of current and future automation and robotics designers with simulation tools, teaching programs, and on-site services.

Quality Assurance, ISO 9001 and ISO 14001 Certifications

Festo Corporation is committed to supply all Festo products and services that will meet or exceed our customers' requirements in product quality, delivery, customer service and satisfaction.

To meet this commitment, we strive to ensure a consistent, integrated, and systematic approach to management that will meet or exceed the requirements of the ISO 9001 standard for Quality Management and the ISO 14001 standard for Environmental Management.



© Copyright 2008, Festo Corporation. While every effort is made to ensure that all dimensions and specifications are correct, Festo cannot guarantee that publications are completely free of any error, in particular typing or printing errors. Accordingly, Festo cannot be held responsible for the same. For Liability and Warranty conditions, refer to our "Terms and Conditions of Sale", available from your local Festo office. All rights reserved. No part of this publication may be reproduced, distributed, or transmitted in any form or by any means, electronic, mechanical, photocopying or otherwise, without the prior written permission of Festo. All technical data subject to change according to technical update.



Printed on recycled paper at New Horizon Graphic, Inc., FSC certified as an environmentally friendly printing plant.

Festo North America

United States

Customer Resource Center

502 Earth City Expy., Suite 125
Earth City, MO 63045

For ordering assistance, or to find
your nearest Festo Distributor,

Call: 1.800.99.FESTO

Fax: 1.800.96.FESTO

Email: customer.service@us.festo.com

For technical support,

Call: 1.866.GO.FESTO

Fax: 1.800.96.FESTO

Email: product.support@us.festo.com

Headquarters

Festo Corporation
395 Moreland Road
P.O. Box 18023
Hauppauge, NY 11788
www.festo.com/us

Sales Offices

Appleton

N. 922 Tower View Drive, Suite N
Greenville, WI 54942

Boston

120 Presidential Way, Suite 330
Woburn, MA 01801

Chicago

1441 East Business Center Drive
Mt. Prospect, IL 60056

Dallas

1825 Lakeway Drive, Suite 600
Lewisville, TX 75057

Detroit - Automotive Engineering Center

2601 Cambridge Court, Suite 320
Auburn Hills, MI 48326

New York

395 Moreland Road
Hauppauge, NY 11788

Silicon Valley

4935 Southfront Road, Suite F
Livermore, CA 94550

Design and Manufacturing Operations



East: 395 Moreland Road, Hauppauge, NY 11788



Central: 1441 East Business Center Drive, Mt. Prospect, IL 60056



West: 4935 Southfront Road, Suite F, Livermore, CA 94550

Mexico

Headquarters

Festo Pneumatic, S.A.
Av. Ceylán 3, Col. Tequesquahuac
54020 Tlalnepantla, Edo. de México
Call: 011 52 [55] 53 21 66 00
Fax: 011 52 [55] 53 21 66 65
Email: festo.mexico@mx.festo.com
www.festo.com/mx



Canada

Headquarters

Festo Inc.
5300 Explorer Drive
Mississauga, Ontario L4W 5G4
Call: 1.905.624.9000
Fax: 1.905.624.9001
Email: info.ca@ca.festo.com
www.festo.com/ca



Festo Worldwide

Argentina Australia Austria Belarus Belgium Brazil Bulgaria Canada Chile China Colombia Croatia Czech Republic Denmark
Estonia Finland France Germany Great Britain Greece Hong Kong Hungary India Indonesia Iran Ireland Israel Italy Japan
Latvia Lithuania Malaysia Mexico Netherlands New Zealand Norway Peru Philippines Poland Romania Russia Serbia Singapore
Slovakia Slovenia South Africa South Korea Spain Sweden Switzerland Taiwan Thailand Turkey Ukraine United States Venezuela

www.festo.com