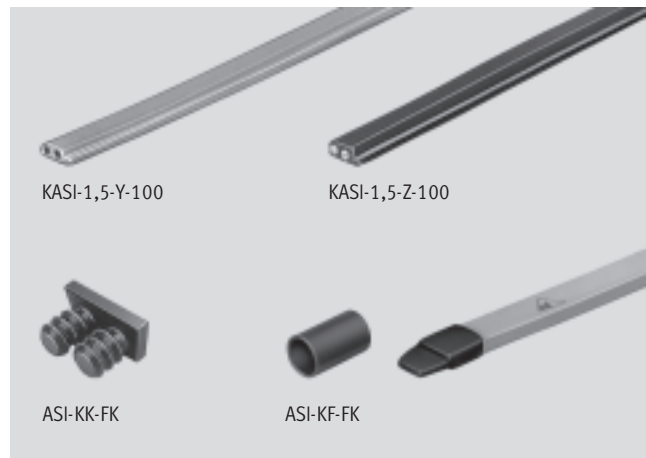


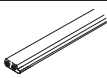
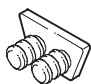

Electrical connection technology, for AS-interface

Technical data – KASI-1,5

- Flat cable, 2-core
- Reverse polarity protected
- Contact established using insulation displacement technology – no need to strip cable and wire insulation
- 2 different colours: yellow (preferred for the AS-interface network) and black (for auxiliary power supply)
- Pre-assembled
- Accessories
 - Flat cable sleeve
For insulating and sealing the AS-interface cable
 - Cable cap
For insulating and sealing the AS-interface cable at the end of the string



General technical data		
Type	KASI-1,5-Y-100	KASI-1,5-Z-100
Connection cross-section [mm ²]	2x 1.5	
Max. cable length [m]	100	
Colour	Yellow	Black
Use	For indoor use only	For outdoor use
Ambient temperature [°C]	-40 ... +85	
Ambient temperature of flexible cable installation [°C]	-25 ... +85	

Ordering data								
View	Material	Protection class	Operating voltage range		Current-carrying capacity [A]	Product weight [g]	Type	Part No.
			[V]	[V]				
	Sheath: Cable: Conductor: tin-plated copper	IP65 with closed wire ends	60 AC	75 DC	3	71	KASI-1,5-Y-100	18 940
							KASI-1,5-Z-100	18 941
	Polyamide	IP65	–	–	–	–	ASI-KK-FK	18 787
			–	–	–	–	ASI-KT-FK	165 593

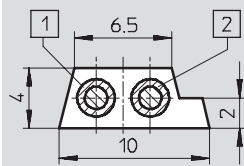
Electrical connection technology, for AS-interface

Technical data – KASI-1,5

Dimensions

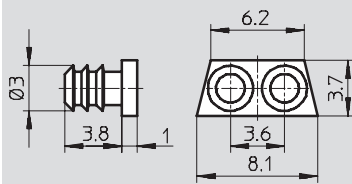
Download CAD data → www.festo.com

Flat cable – KASI-1,5-...-100



- 1 Blue (-)
- 2 Brown (+)

Cable cap – ASI-KK-FK



Flat cable sleeve – ASI-KT-FK

