

Software FluidDraw S5®



Faster pneumatic circuit diagrams

Description

FluidDraw provides you with access to an extensive library of pneumatic symbols.

The DIN standardised pneumatic symbols are categorised according to drives, valves, valve terminals, compressed air preparation, vacuum technology, flow control, non-return valves, etc.

You place the required symbols in the circuit by dragging and dropping or by using the search function.

You can save recurring symbols and circuits as macros and store them in your own libraries.

Importing a Festo parts list (e.g. shopping basket) places the associated symbols on the desktop. All that remains is to arrange them and add the connecting lines.

The parts list generator collects all the attributes ascribed to the symbols such as part number, designation, type, etc. in the background. These attributes can be copied from the Festo catalogue or manually assigned. The relationships between the circuit symbol and parts list item are emphasised.

You can adapt the parts list layout displayed on the screen or sent to the printer as per your requirements.

The benefits to you

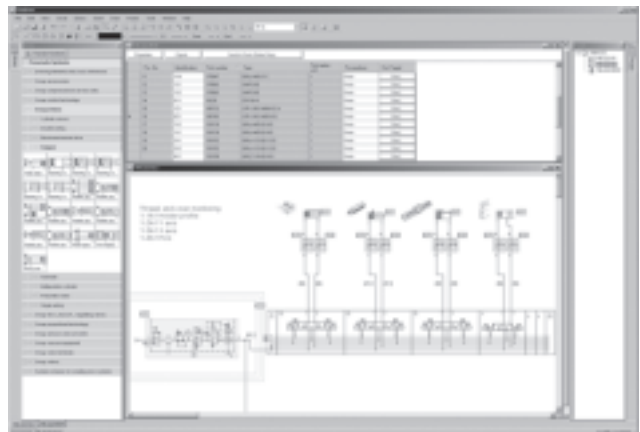
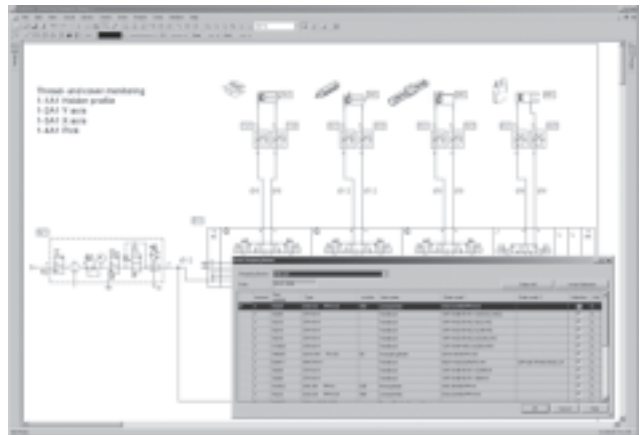
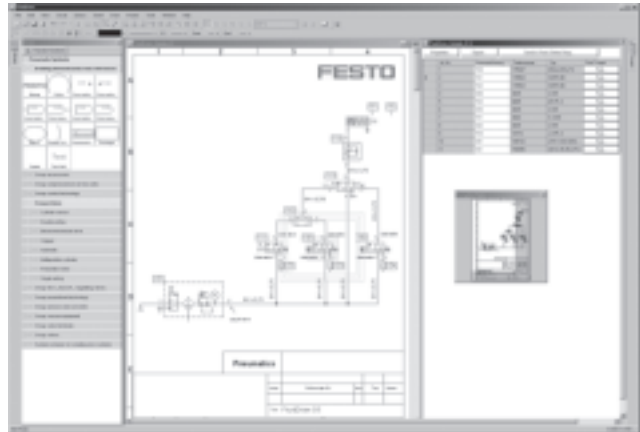
Direct access to ready-drawn symbols
Easy, user-friendly operator guidance
Interface to Festo products (catalogue, online shop)

Program components

- Comprehensive symbol library based on DIN ISO 1219-1
- Easy creation of macros
- Automatic creation of circuits for valve terminals and service unit combinations
- Insertion of picture files
- DXF/TIFF export of circuit diagrams
- DXF import
- Simultaneous editing of multiple circuit diagrams
- Equipment identifiers
- Emphasising of symbol and associated parts list item
- Convenient printing functions
- Zoom, grid, clipboard, navigation window, etc.
- Online help

System requirements

Windows 2000/XP/VISTA
≥ 512 MB RAM (2000/XP)
≥ 1 GB RAM (VISTA)



New functions			
Editing	Parts lists	General	
<ul style="list-style-type: none"> • Progressive rotation and scaling • Intelligent grid with automatic overlaying of auxiliary lines for aligning symbols • Improved automatic cable routing • Manual setting of interpolation points for connecting lines • New function to make drawing working lines easier • Multiple window views of a drawing page can be displayed and edited at the same time • Navigation window with selection of the page detail • Extended drawing functions • Simple drawing elements: lines with different arrowheads, rectangle, circle, ellipsis, text, graphic • Simultaneous editing of the geometric properties of highlighted objects • Extended undo/redo function • Free input and positioning of port identifications 	<ul style="list-style-type: none"> • New parts list representation • Extended functions for selecting the listed project files • Printing of long lists over multiple pages • Direct editing of attributes in the parts list • Search function for components associated with the respective list entry • Interface to the Festo online shopping basket 	<ul style="list-style-type: none"> • Greater drawing precision, greater zoom scale as a result (max. 10,000 %) • New file format in XML syntax • Extended administration functions for user-specific symbol libraries • More efficient storage of libraries (better performance in the network) • Consistent separation of program and user files (fewer problems with permissions in the network) • Explicit specification of folder paths (no hidden INI entries required) 	<ul style="list-style-type: none"> • Better utilisation of multi-processor systems through the use of background processes • All attribute values can be displayed at any position as text references • Support for up to 255 drawing levels • No internal restriction on the number of objects (support for more extensive circuits/larger projects) • Direct access to the databases of the Festo catalogue (avoids interface problems with xDKI) • More precise definition of the page boundaries when printing
	Projects		
	<ul style="list-style-type: none"> • Clearer representation of the project files • Improved administration of the project attributes • Copying of the globally defined drawing frame to new pages 		

Ordering data			
		Part No.	Type
	Software	560858	GSWF-CD-FD-S5-L1-ML
	Manual	560859	GDCW-GSWF-FD-S5-DE
	Software and manual	560860	GSWF-SP-FD-S5-L1-DE