

# Electrical connection technology, for fieldbus connection

Technical data – FBS-SUB-9-BU-...-B

- Fieldbus socket with 9-pin Sub-D connection
- Variants for different fieldbus systems
- Position of DIL switches can be read externally
- Easy to assemble



General technical data		
Type of mounting	2 M3x20 screws	
Cable connector	Pg9	
Electrical connection	9-pin socket, Sub-D	
Permissible cable diameter [mm]	5 ... 10	
Protection class to EN 60529	IP65/67 (assembled)	
Material	Housing	Reinforced polyamide
	Seal	Nitrile rubber
	Union nut	Nickel-plated brass
	Screws	Steel
Material note	RoHS-compliant	
Height/length/width [mm]	62/61/20	

Operating and environmental conditions	
Ambient temperature [°C]	0 ... +50
Storage temperature [°C]	-20 ... +70
Relative air humidity	95%, non-condensing

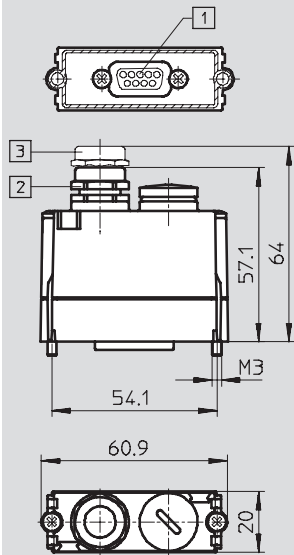
Ordering data					
	Additional functions	Fieldbus interface	Product weight [g]	Type	Part No.
	Integrated RBST bridge	Interbus nodes CPX and CPV 1x 5 spring-loaded terminals	60	<b>FBS-SUB-9-BU-IB-B</b>	<b>532218</b>
	-	DeviceNet/Can CPX and CPV 2x 5 spring-loaded terminals BUS In - BUS Out looped through	60	<b>FBS-SUB-9-BU-2x5POL-B</b>	<b>532219</b>

# Electrical connection technology, for fieldbus connection

Technical data – FBS-SUB-9-BU-...-B

## Dimensions

Download CAD data → [www.festo.com](http://www.festo.com)



- 1 Sub-D socket, 9-pin
- 2 Cable connector, polymer, Pg9
- 3 Cable connector, metal, Pg9