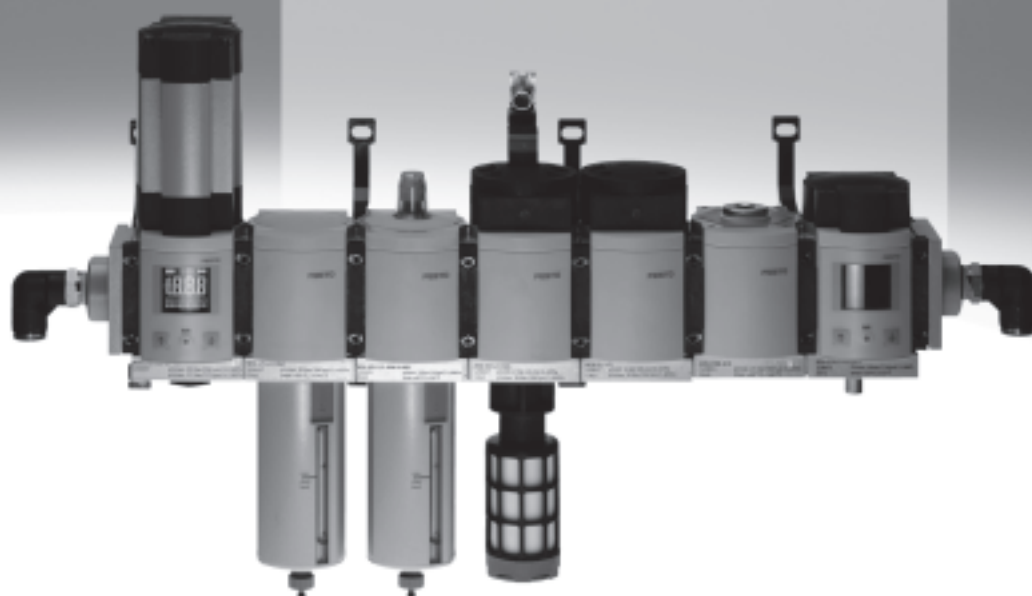


Accessories, MS series





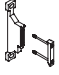

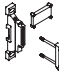





FESTO



Accessories, MS series

Product range overview









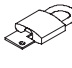
FESTO

Type		Accessories for size			
		MS4	MS6	MS9	MS12
Mounting attachments for individual devices					
Mounting bracket MS-WB		■ → 4	■ → 4	–	–
Mounting bracket MS-WBM		■ → 4	–	–	–
Mounting bracket MS-WR		■ → 5	■ → 5	–	–
Hex nut MS-WRS		■ → 5	■ → 5	–	–
Mounting attachments for individual devices/combinations					
Mounting bracket MS-WP		■ → 7	■ → 7	■ → 11	■ → 13
Mounting bracket MS-WPB		■ → 7	■ → 7	■ → 11	–
Mounting bracket MS-WPM		■ → 8	■ → 8	■ → 12	–
Connectors					
Module connector MS-MV		■ → 9	■ → 9	■ → 12	■ → 13
Module connector MS-MVM		■ → 9	■ → 9	–	–
Module connector MS-RMV		■ → 14	■ → 14	■ → 17	–
Module connector MS-AMV		■ → 14	■ → 14	–	–
Module connector MS-ARMV		–	■ → 17	■ → 17, 19	■ → 19

Accessories, MS series

Product range overview

FESTO

Type		Accessories for size			
		MS4	MS6	MS9	MS12
Adapters for mounting on profiles					
Power supply modules MS-E-IPM-40-80		■ → 22	■ → 22	–	–
Power supply modules MS-E-IPM-80-80		■ → 22	■ → 22	–	–
Branching modules MS-A-IPM-80		■ → 22	■ → 22	–	–
Branching modules MS-A-RMV-IPM-80		■ → 22	■ → 22	–	–
Sealing rings MS-NNR		■ → 22	■ → 22	–	–
Cover plates					
Connecting plate MS-AG...		■ → 28	■ → 28	■ → 30	■ → 31
Cover plate MS-END		■ → 29	■ → 29	–	–
Mounting plate MS-AEND		■ → 29	■ → 29	–	–
Security components					
Padlock LRVS-D		■ → 32	■ → 32	■ → 32	■ → 32

Accessories, MS series

Mounting attachments MS4/MS6

FESTO

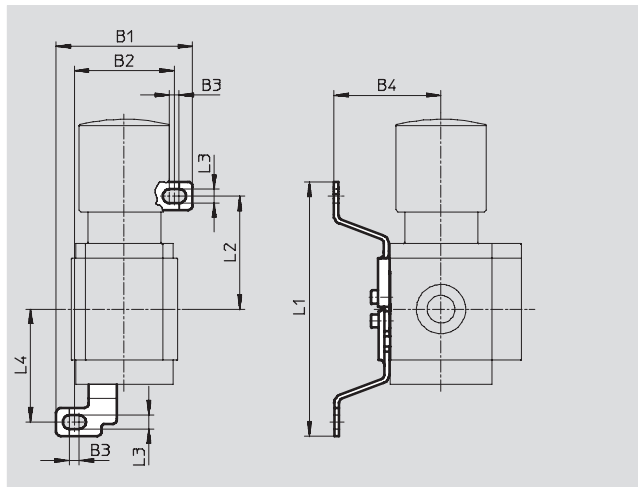
Mounting bracket MS4/6-WB

(order code: WB)

- For wall mounting

Material:

Steel



Dimensions and ordering data											
Size	B1	B2	B3	B4	L1	L2	L3	L4	Weight [g]	Part No.	Type
MS4	56.2	41.2	4	44.2	104.6	46.6	5.6	46.5	46	532 185	MS4-WB
MS6	79.4	61.9	4.5	55	157.6	71	6.6	71	121	532 196	MS6-WB

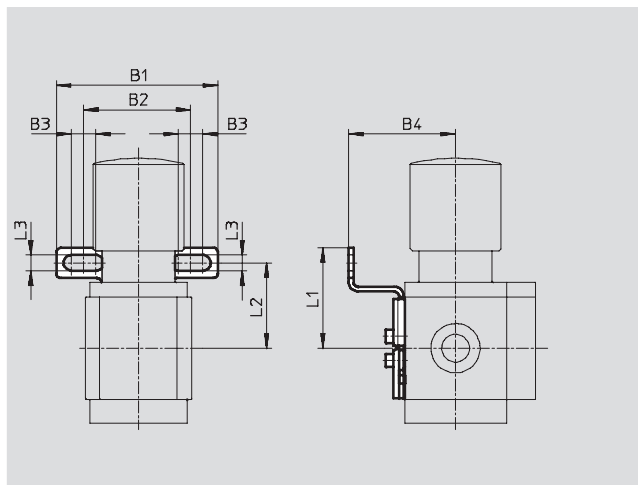
Mounting bracket MS4-WBM

(order code: WBM)

- For wall mounting

Material:

Steel



Dimensions and ordering data										
Size	B1	B2	B3	B4	L1	L2	L3	Weight [g]	Part No.	Type
MS4	66.5	44	10	44	41.3	35	6.5	48	526 062	MS4-WBM

Accessories, MS series

Mounting attachments MS4/MS6

FESTO

Mounting bracket MS4/6-WR

(order code: WR)

- For wall mounting
- For filter regulator, pressure regulator

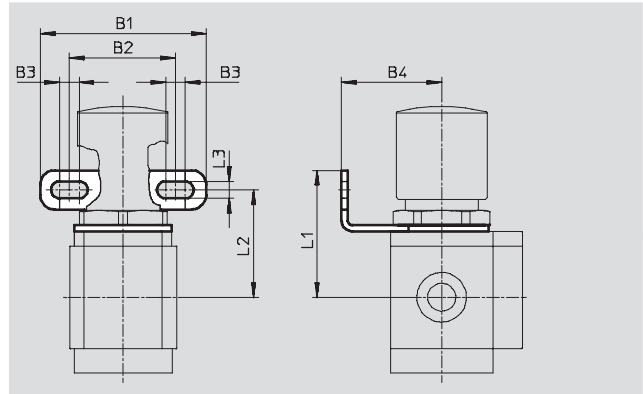
Material:

Steel



Note

The hex nut for attaching components to this bracket must be ordered separately.



Dimensions and ordering data

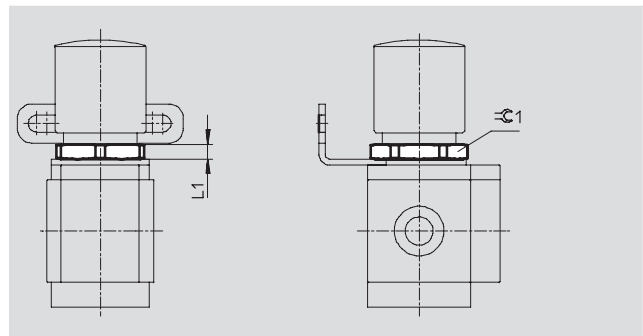
Size	B1	B2	B3	B4	L1	L2	L3	Weight [g]	Part No.	Type
MS4	68	44	8	41	52	44	7	49	526 064	MS4-WR
MS6	70	42	8.2	40	67	57	7.1	90	526 075	MS6-WR

Hex nut MS4/6-WRS

- For front panel mounting
- For attaching the mounting bracket MS...-WR

Material:

Aluminium



Dimensions and ordering data

Size	L1	DIN 913	Weight [g]	Part No.	Type
MS4	6	36	6.9	532 187	MS4-WRS
MS6	7	55	20.9	532 188	MS6-WRS

Accessories, MS series

Mounting attachments MS4/MS6

FESTO

Mounting bracket MS4/6-WP...

Clearances for mounting service unit combinations

1 service unit

MS4: with WP/WPB/WPM-D:

40.2 mm

(20.1 mm for MS4-FRM-FRZ)

MS6: with WP, WPB: 62 mm

(31 mm for MS6-FRM-FRZ)

with WPM-D: 69 mm

(38 mm for MS6-FRM-FRZ)

2 service units

MS4: with WP/WPB/WPM-D:

80.4 mm

(40.2 mm for MS4-FRM-FRZ)

MS6: with WP, WPB: 124 mm

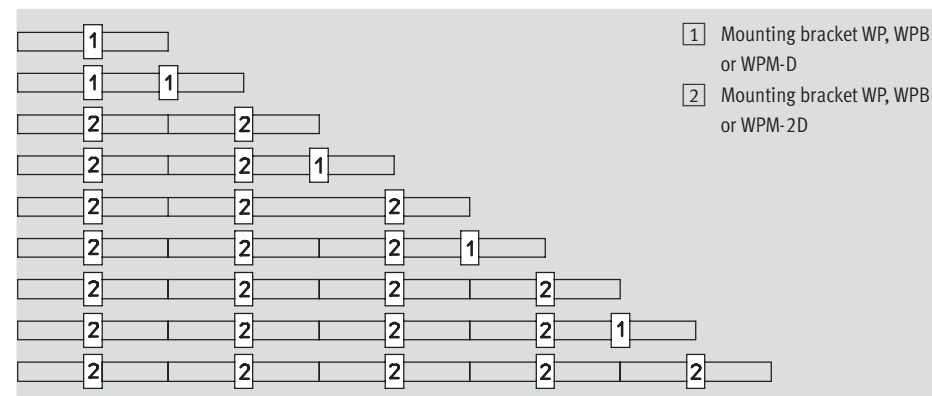
(62 mm for MS6-FRM-FRZ)

with WPM-2D: 138 mm

(76 mm for MS6-FRM-FRZ)

Number of units

1 2 3 4 5 6 7 8 9 10

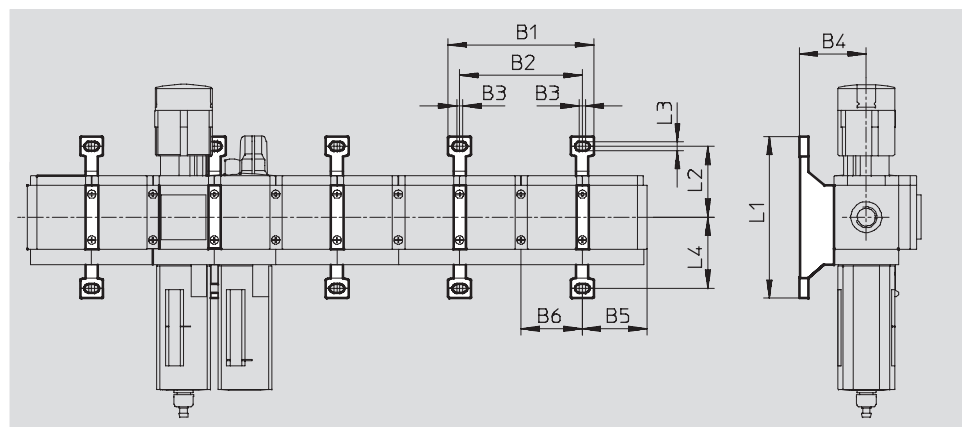


Mounting dimensions



Note

The distributor block MS4/6-FRM-FRZ has a dimension of half grid width.



Type	2 service units with grid dimension		1 service unit with grid dimension and 1 distributor block MS-FRM-FRZ		2 distributor blocks MS-FRM-FRZ		B3	B4	Service unit with grid dimension		Distributor block MS-FRM-FRZ		L1	L2	L3	L4
	B1	B2	B1	B2	B1	B2			B5 ¹⁾	B6	B5 ¹⁾	B6				
MS4-WP	95.4	80.4	75.3	60.3	55.2	40.2	4	44	41.9	40.2	21.8	20.1	106	46.5	5.6	46.7
MS4-WPB								66								
MS4-WPM-...D								44					92.8	34.8		45.2
MS6-WP	141	124	110	93	79	62	4.5	54.1	64.5	62	33.5	31	158	71	6.6	71
MS6-WPB								90.5								
MS6-WPM-...D								54.1					98.6	41.3		41.3

1) With accessory cover plate MS-END

Accessories, MS series

Mounting attachments MS4/MS6

FESTO

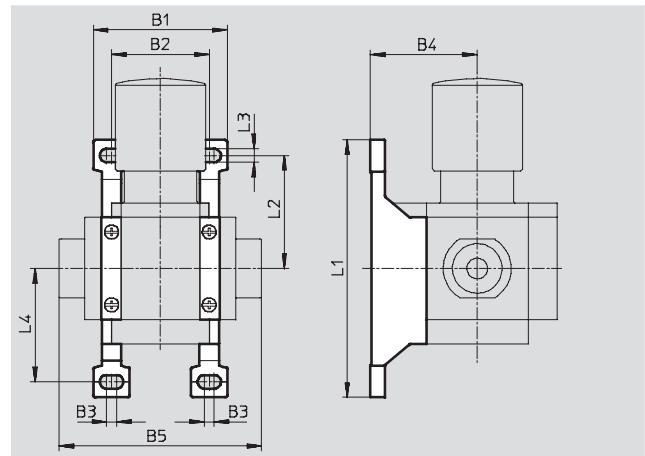
Mounting bracket MS4/6-WP

(order code: WP)

- For connecting modules via wall mounting
- In combination with a connecting plate MS4/6-AG... for individual wall mounting
- In combination with mounting plate MS-AEND for individual wall mounting via direct thread
- For pressure regulator LRB with angled outlet block B... at rear

Material:

Die-cast aluminium



Dimensions and ordering data											
Size	B1	B2	B3	B4	B5	L1	L2	L3	L4	Weight [g]	Part No. Type
MS4	55.2	40.2	4	44	83.4	106	46.5	5.6	46.7	39	532 184 MS4-WP
MS6	79	62	4.5	54.1	115	158	71	6.6	71	76	532 195 MS6-WP

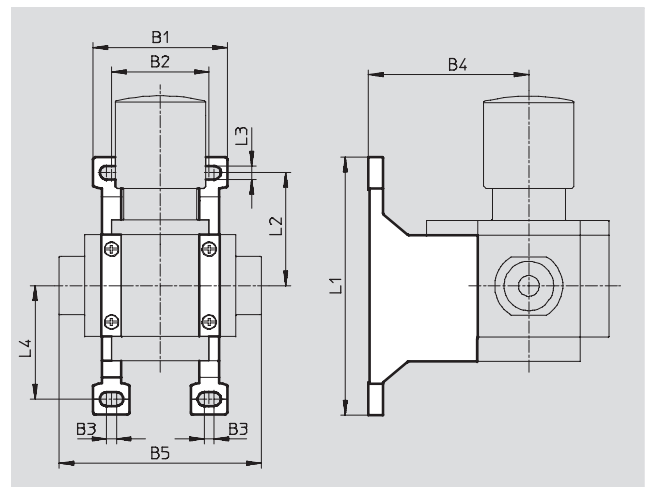
Mounting bracket MS4/6-WPB

(order code: WPB)

- For connecting modules via wall mounting
- In combination with a connecting plate MS4/6-AG... for individual wall mounting
- In combination with mounting plate MS-AEND for individual wall mounting via direct thread
- Provides large wall gap for pressure regulator

Material:

Die-cast aluminium



Dimensions and ordering data											
Size	B1	B2	B3	B4	B5	L1	L2	L3	L4	Weight [g]	Part No. Type
MS4	55.2	40.2	4	66	83.4	106	46.5	5.6	46.7	55	526 063 MS4-WPB
MS6	79	62	4.5	90.5	115	158	71	6.6	71	115	526 074 MS6-WPB

Accessories, MS series

Mounting attachments MS4/MS6

FESTO

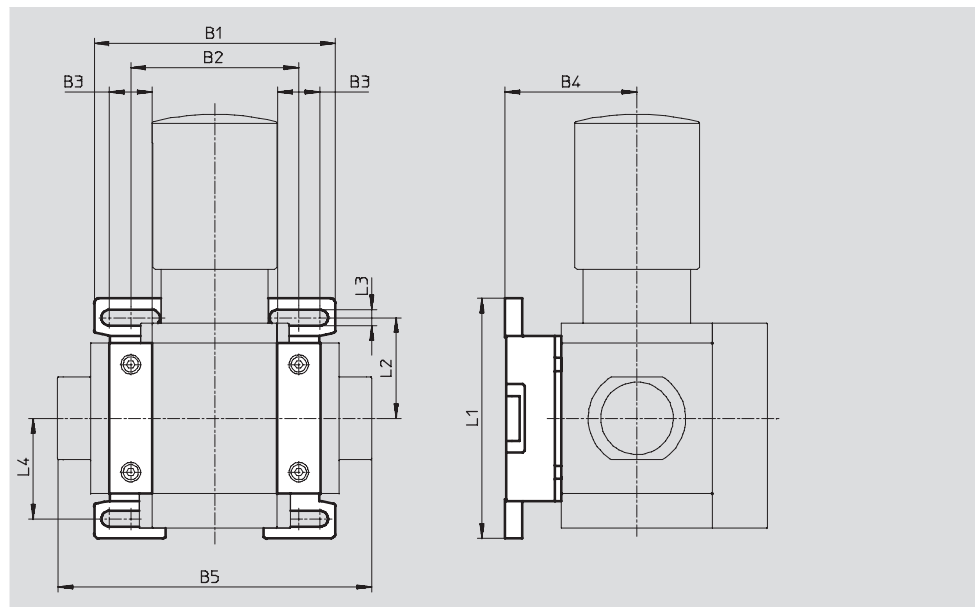
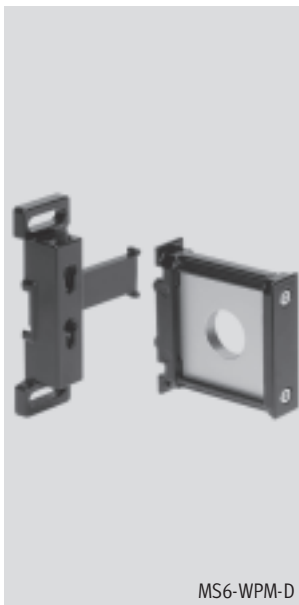
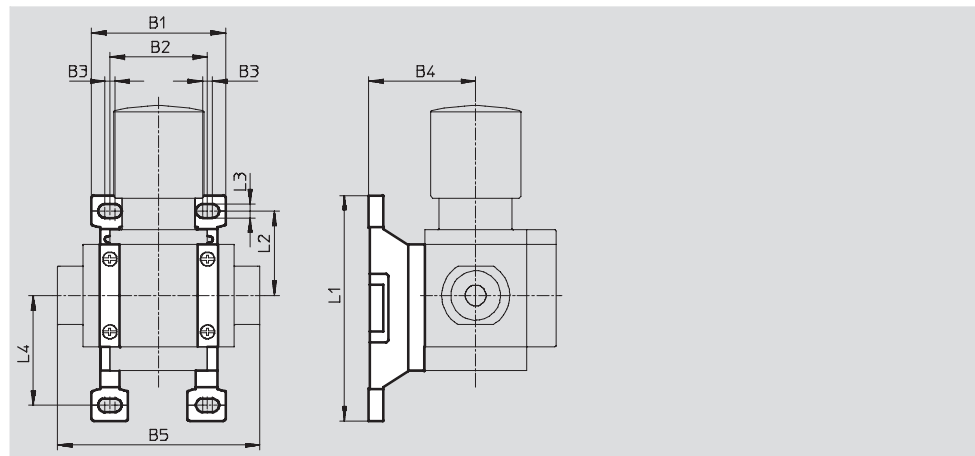
Mounting bracket MS4/6-WPM

(order code: WPM)

- For connecting modules via wall mounting
- In combination with a connecting plate MS4/6-AG... for individual wall mounting
- Speedy attachment and detachment
- For installation of modules with regulating knob pointing downwards

The distance piece D or 2D (designated in the type code) is included in the scope of delivery and ensures the correct clearance

Material:
Die-cast aluminium



Dimensions and ordering data													
Size	B1	B2	B3	B4	B5	L1	L2	L3	L4	Clearance	Weight [g]	Part No.	Type
MS4	55.2	40.2	4	44	83.4	92.8	34.8	5.6	45.2	40.2	45	526 060	MS4-WPM-D
	95.4	80.4			123.4					80.4	55	526 061	MS4-WPM-2D
MS6	99	69	17.5	54.1	129	98.6	41.3	6.6	41.3	69	144	526 073	MS6-WPM-D
	168	138			198					138	154	532 186	MS6-WPM-2D

Accessories, MS series

Mounting attachments MS4/MS6

Module connector MS4/6-MV

- For connecting modules

Material:

Stainless steel/polyacetal



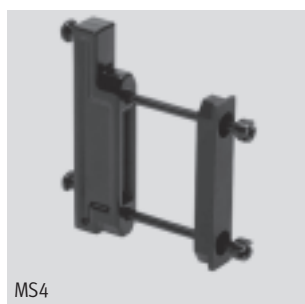
Ordering data			
Size	Weight [g]	Part No.	Type
MS4	36	532 798	MS4-MV
MS6	54	532 799	MS6-MV

Module connector MS4/6-MVM

- For installation of modules with regulating knob pointing downwards

Material:

Die-cast aluminium



Ordering data			
Size	Weight [g]	Part No.	Type
MS4		532 800	MS4-MVM
MS6		532 801	MS6-MVM

Accessories, MS series

Mounting attachments MS9

FESTO

Mounting bracket MS9-WP...

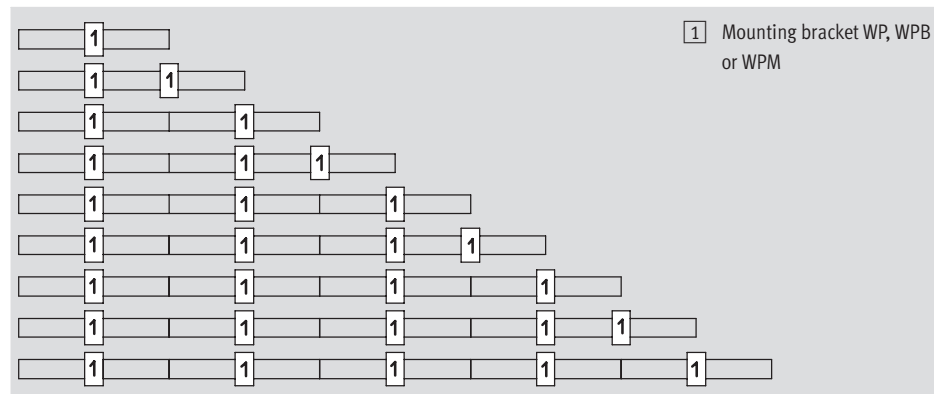
Clearances for mounting service unit combinations

1 service unit: 90 mm

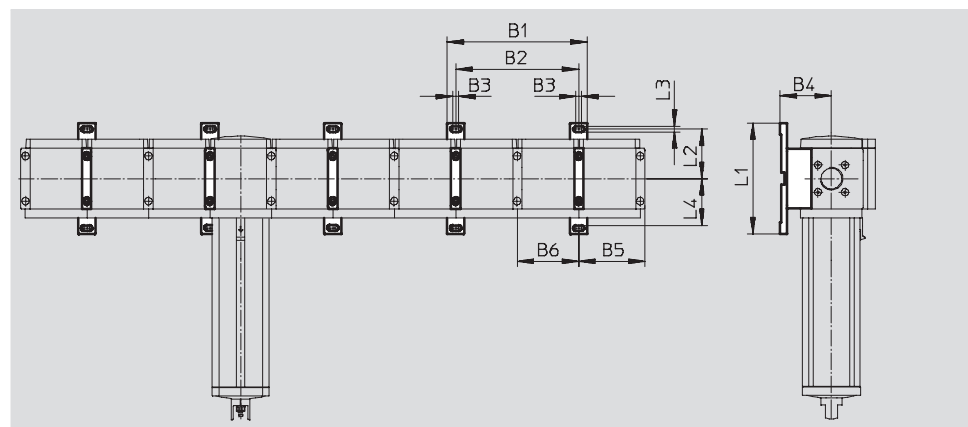
2 service units: 180 mm

Number of units

1 2 3 4 5 6 7 8 9 10



Mounting dimensions



Type	B1	B2	B3	B4	B5	B6	L1	L2	L3	L4
MS9-WP	205	180	8.5	75	97	90	162	72.75	8.3	72.25
MS9-WPB				99						
MS9-WPM				90.5						

Accessories, MS series

Mounting attachments MS9

Mounting bracket MS9-WP

(order code: WP)

- For connecting modules via wall mounting
- In combination with a connecting plate MS9-AG... for individual wall mounting

Material:

Module connector, bracket,
hollow bolt: Die-cast aluminium

Screws: Steel

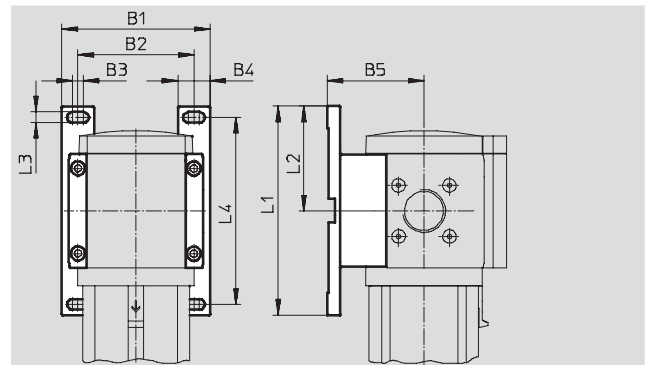
Seals: Nitrile rubber

RoHS-compliant

Free of copper and PTFE

Temperature of medium:

-10 ... +60 °C



Dimensions and ordering data													
Size	B1	B2	B3	B4	B5	L1	L2	L3	L4	CRC ¹⁾	Weight [g]	Part No.	Type
MS9	115	90	8.5	25	75	162	81.25	8.3	145	2	180	552 947	MS9-WP

1) Corrosion resistance class 2 as per Festo standard 940 070

Components subject to moderate corrosion stress. Externally visible parts with primarily decorative surface requirements which are in direct contact with a normal industrial environment or media such as coolants or lubricating agents.

Mounting bracket MS9-WPB

(order code: WPB)

- For connecting modules via wall mounting
- In combination with a connecting plate MS9-AG... for individual wall mounting
- Same wall gap for combination with MS12 series using the mounting bracket MS12-WP

Material:

Module connector, bracket,
hollow bolt: Die-cast aluminium

Screws: Steel

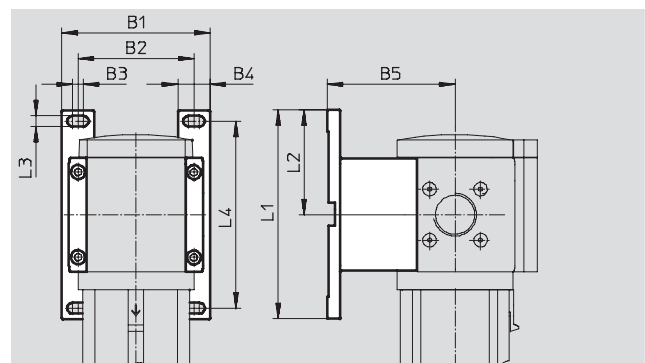
Seals: Nitrile rubber

RoHS-compliant

Free of copper and PTFE

Temperature of medium:

-10 ... +60 °C



Dimensions and ordering data													
Size	B1	B2	B3	B4	B5	L1	L2	L3	L4	CRC ¹⁾	Weight [g]	Part No.	Type
MS9	115	90	8.5	25	99	162	81.25	8.3	145	2	210	552 949	MS9-WPB

1) Corrosion resistance class 2 as per Festo standard 940 070

Components subject to moderate corrosion stress. Externally visible parts with primarily decorative surface requirements which are in direct contact with a normal industrial environment or media such as coolants or lubricating agents.

Accessories, MS series

Mounting attachments MS9

FESTO

Mounting bracket MS9-WPM

(order code: WPM)

- For connecting modules via wall mounting
- In combination with a connecting plate MS9-AG... for individual wall mounting

- Speedy attachment and detachment
- Same wall gap for combination with MS6 series using the mounting bracket MS6-WPB

The distance pieces included in the scope of delivery ensure the correct clearance.

Material:

Module connector, bracket, hollow

bolt: Die-cast aluminium

Screws: Steel

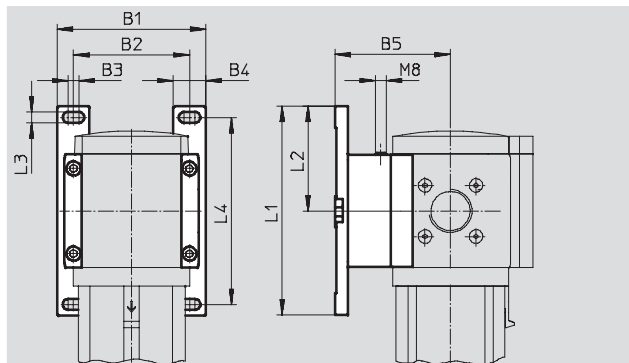
Seals: Nitrile rubber

RoHS-compliant

Free of copper and PTFE

Temperature of medium:

–10 ... +60 °C



Dimensions and ordering data												
Size	B1	B2	B3	B4	B5	L1	L2	L3	L4	CRC ¹⁾	Weight [g]	Part No. Type
MS9	115	90	8.5	25	90.5	162	81.25	8.3	145	2	220	552 948 MS9-WPM

1) Corrosion resistance class 2 as per Festo standard 940 070

Components subject to moderate corrosion stress. Externally visible parts with primarily decorative surface requirements which are in direct contact with a normal industrial environment or media such as coolants or lubricating agents.

Module connector MS9-MV

- For connecting modules

Material:

Module connector, hollow bolt:

Die-cast aluminium

Screws: Steel

Seals: Nitrile rubber

RoHS-compliant

Free of copper and PTFE

Temperature of medium:

–10 ... +60 °C



Ordering data			
Size	CRC ¹⁾	Weight [g]	Part No. Type
MS9	2	110	552 950 MS9-MV

1) Corrosion resistance class 2 as per Festo standard 940 070

Components subject to moderate corrosion stress. Externally visible parts with primarily decorative surface requirements which are in direct contact with a normal industrial environment or media such as coolants or lubricating agents.

Accessories, MS series

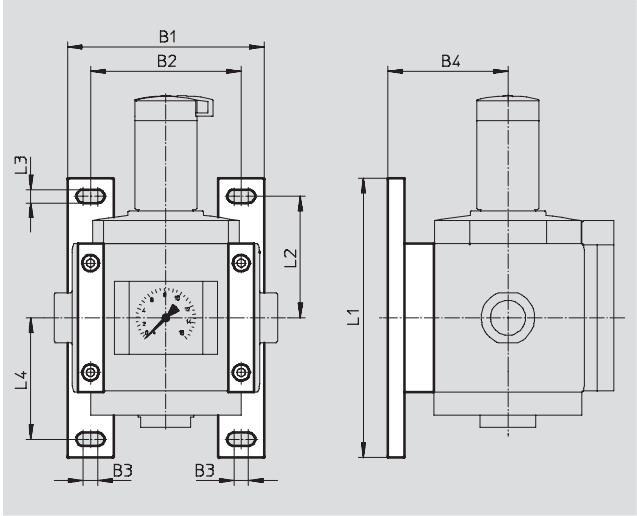
Mounting attachments MS12

Mounting bracket MS12-WP

(order code: WP)

- For connecting modules via wall mounting
- In combination with a connecting plate for individual wall mounting

Material:
Die-cast aluminium
Free of copper and PTFE



Dimensions and ordering data											
Size	B1	B2	B3	B4	L1	L2	L3	L4	Weight [g]	Part No.	Type
MS12	162	124	12	99	230	100	11	100	700	537 133	MS12-WP

Module connector MS12-MV

- For connecting modules

Material:
Die-cast aluminium
Free of copper and PTFE

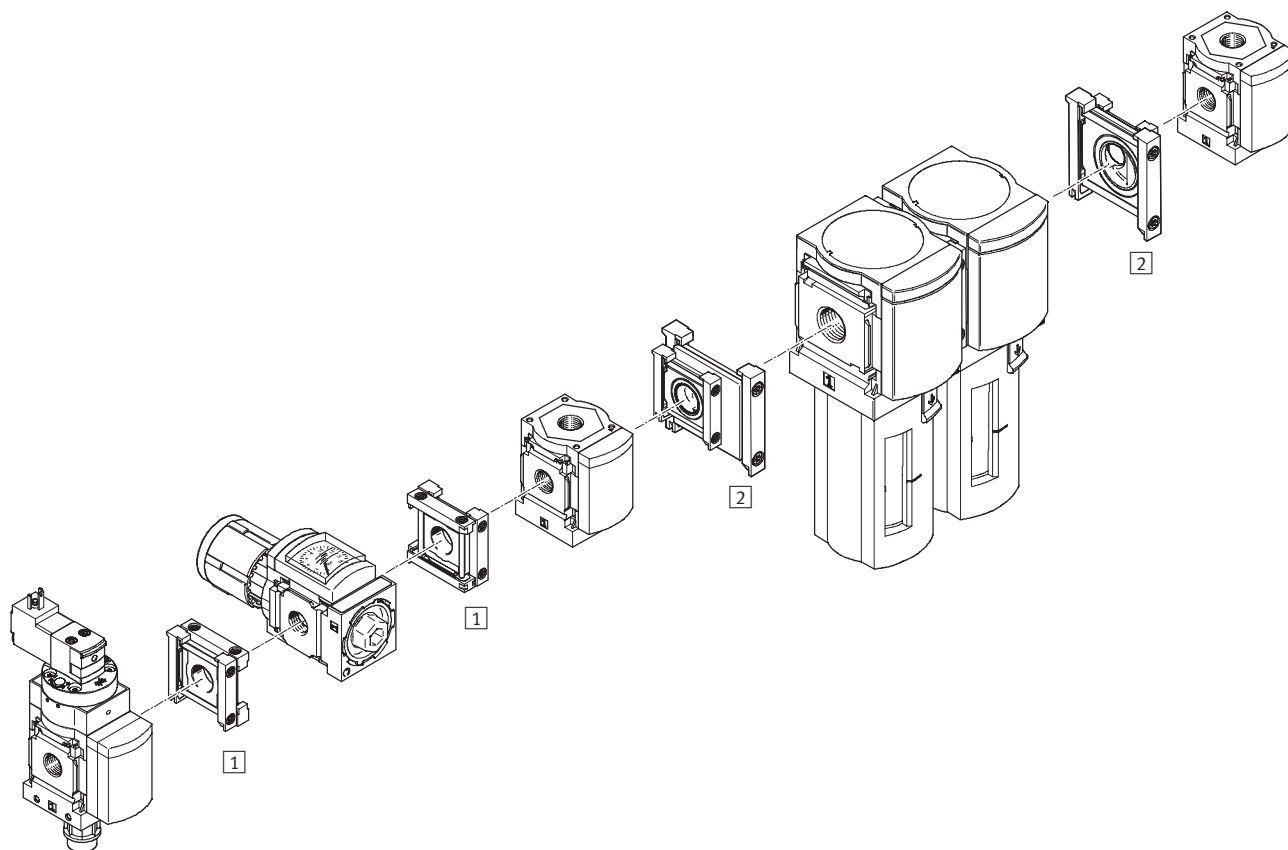


Ordering data			
Size	Weight [g]	Part No.	Type
MS12	500	537 134	MS12-MV

Accessories, MS series

Mounting attachments MS4/MS6

FESTO



Mounting attachments

		→ Page/Internet
1	Module connector MS4/6-RMV	15
2	Module connector MS4-6-AMV	16

 Note

Mounting attachments for wall
mounting → 6

Accessories, MS series

Mounting attachments MS4/MS6

Module connector MS4/6-RMV

- For connecting service units at right angles to the axis of connection

Material:

Connecting plate, module connector:

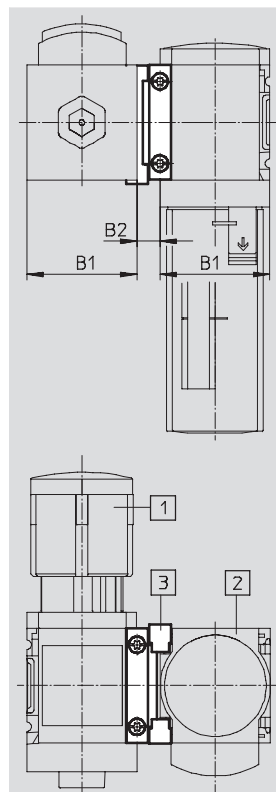
Die-cast aluminium

Sealing ring: Nitrile rubber

RoHS-compliant

Temperature of medium:

–10 ... +60 °C



- 1 Service unit
- 2 Service unit of same size at right angles to the axis of connection
- 3 Module connector

Dimensions and ordering data						
Size	B1	B2	CRC ¹⁾	Weight [g]	Part No.	Type
MS4	40.2	8.5	2	42	543 490	MS4-RMV
MS6	62	11	2	112	543 491	MS6-RMV

1) Corrosion resistance class 2 as per Festo standard 940 070
Components subject to moderate corrosion stress. Externally visible parts with primarily decorative surface requirements which are in direct contact with a normal industrial environment or media such as coolants or lubricating agents.

Accessories, MS series

Mounting attachments MS4/MS6

FESTO

Module connector MS4-6-AMV

- For connecting MS4 and MS6 service units into one unit

Material:

Connecting plate, module connector:

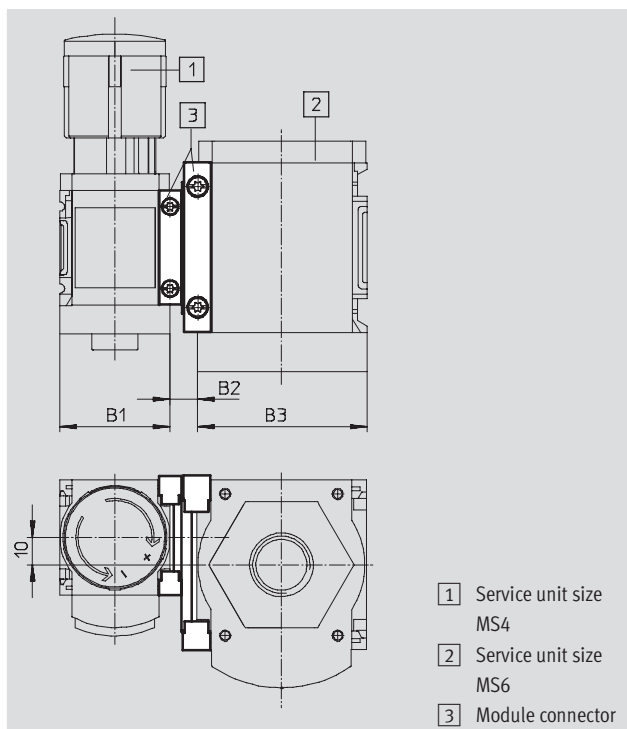
Die-cast aluminium

Sealing ring: Nitrile rubber

RoHS-compliant

Temperature of medium:

-10 ... +60 °C



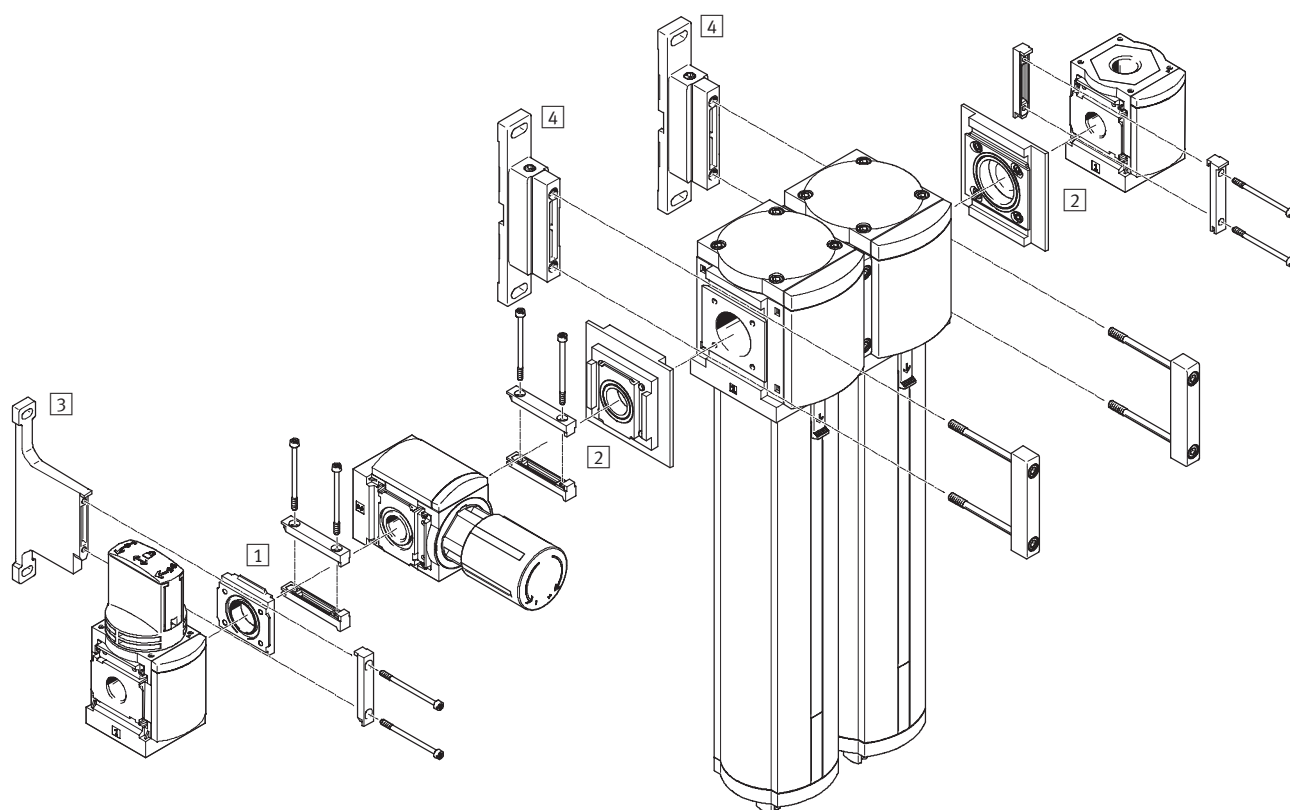
Dimensions and ordering data							
Size	B1	B2	B3	CRC ¹⁾	Weight [g]	Part No.	Type
MS4/6	40.2	10	62	2	77	543 489	MS4-6-AMV

1) Corrosion resistance class 2 as per Festo standard 940 070

Components subject to moderate corrosion stress. Externally visible parts with primarily decorative surface requirements which are in direct contact with a normal industrial environment or media such as coolants or lubricating agents.

Accessories, MS series

Mounting attachments MS6/MS9



Mounting attachments		→ Page/Internet
1	Module connector MS6-RMV	15
2	Module connector MS6-9-ARMV	18
3	Mounting bracket MS6-WPB	7
4	Mounting bracket MS9-WPM	12

Accessories, MS series

Module connector MS6/MS9

FESTO

Module connector MS6-9-ARMV

- For connecting MS6 and MS9 service units into one unit
- Rotation of service unit at right angles to the axis of connection possible

Material:

Connecting plate, module connector:

Die-cast aluminium

Screws: Steel

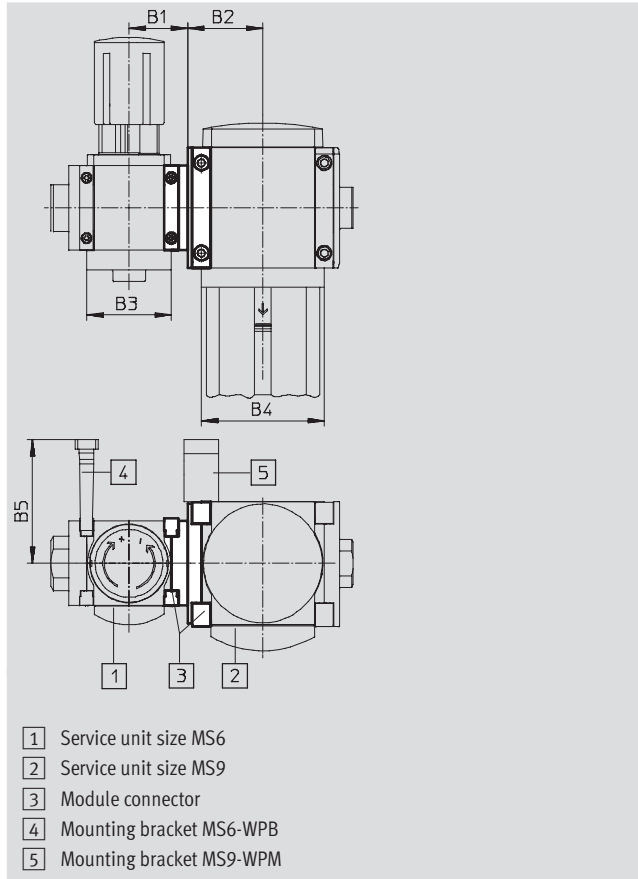
Seals: Nitrile rubber

RoHS-compliant

Free of copper and PTFE

Temperature of medium:

-10 ... +60 °C



 Note

The larger mounting bracket must always be used on the module connector. The mounting bracket must be ordered separately.

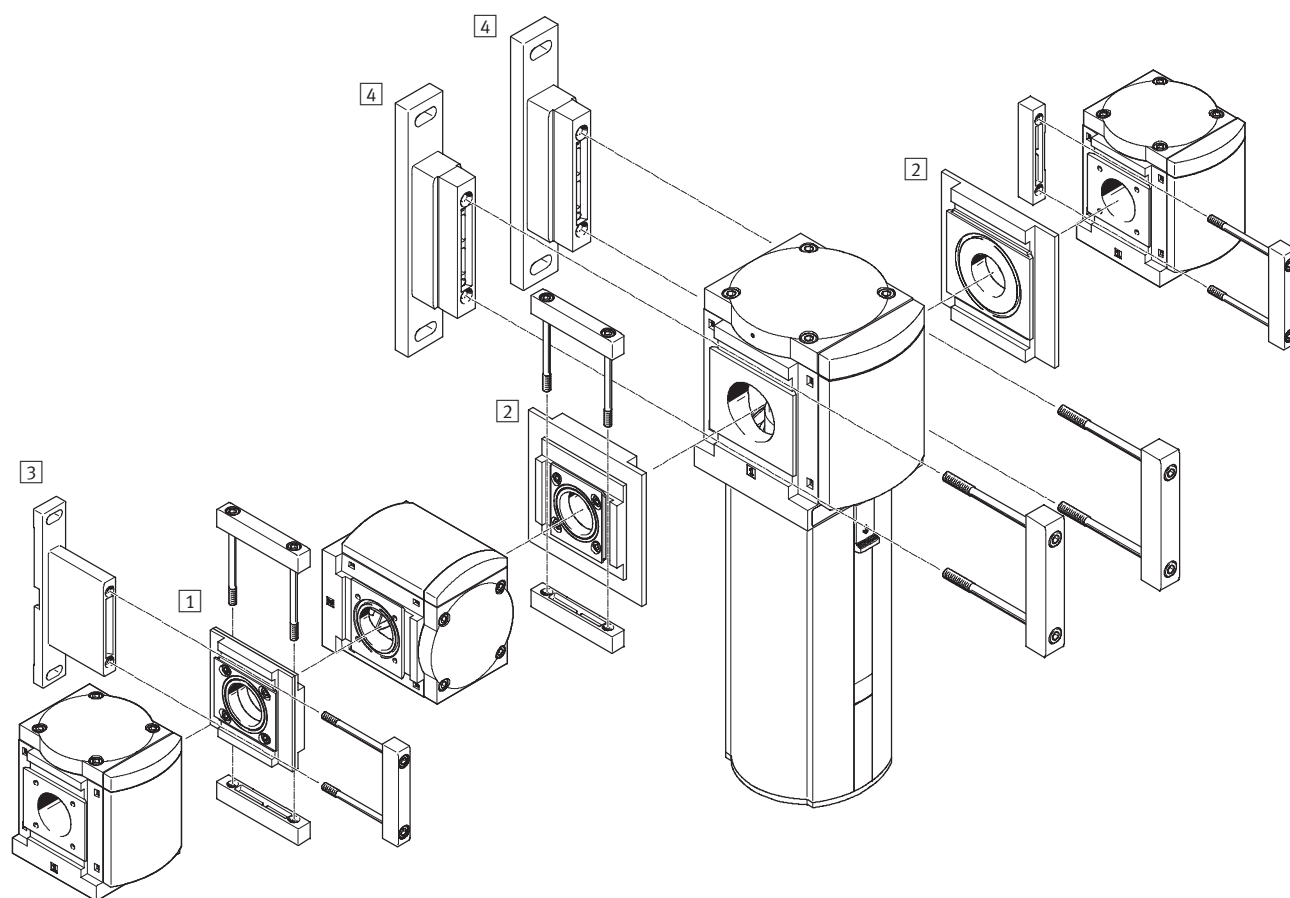
Dimensions and ordering data									
Size	B1	B2	B3	B4	B5	CRC ¹⁾	Weight [g]	Part No.	Type
MS6/9	43	55	62	90	90.5	2	350	552 951	MS6-9-ARMV

1) Corrosion resistance class 2 as per Festo standard 940 070

Components subject to moderate corrosion stress. Externally visible parts with primarily decorative surface requirements which are in direct contact with a normal industrial environment or media such as coolants or lubricating agents.

Accessories, MS series

Mounting attachments MS9/MS12



Mounting attachments		→ Page/Internet
1	Module connector MS9-RMV	20
2	Module connector MS9-12-ARMV	21
3	Mounting bracket MS9-WPB	11
4	Mounting bracket MS12-WP	13

Accessories, MS series

Mounting attachments MS9/MS12

FESTO

Module connector MS9-RMV

- For connecting service units at right angles to the axis of connection

Material:

Connecting plate, module connector:

Die-cast aluminium

Screws: Steel

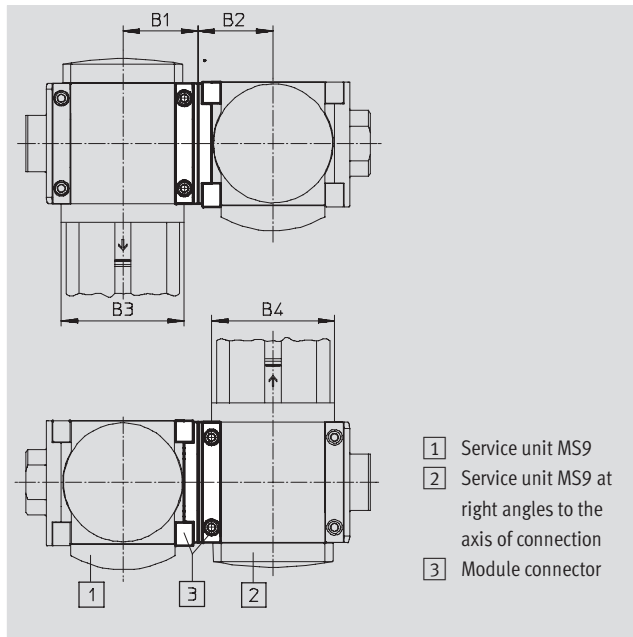
Seals: Nitrile rubber

RoHS-compliant

Free of copper and PTFE

Temperature of medium:

-10 ... +60 °C



Dimensions and ordering data								
Size	B1	B2	B3	B4	CRC ¹⁾	Weight [g]	Part No.	Type
MS9	55	55	90	90	2	920	552 952	MS9-RMV

1) Corrosion resistance class 2 as per Festo standard 940 070

Components subject to moderate corrosion stress. Externally visible parts with primarily decorative surface requirements which are in direct contact with a normal industrial environment or media such as coolants or lubricating agents.

Accessories, MS series

Mounting attachments MS9/MS12

Module connector MS9-12-ARMV

- For connecting MS9 and MS12 service units into one unit
- Rotation of service unit at right angles to the axis of connection possible

Material:

Connecting plate, module connector:

Die-cast aluminium

Screws: Steel

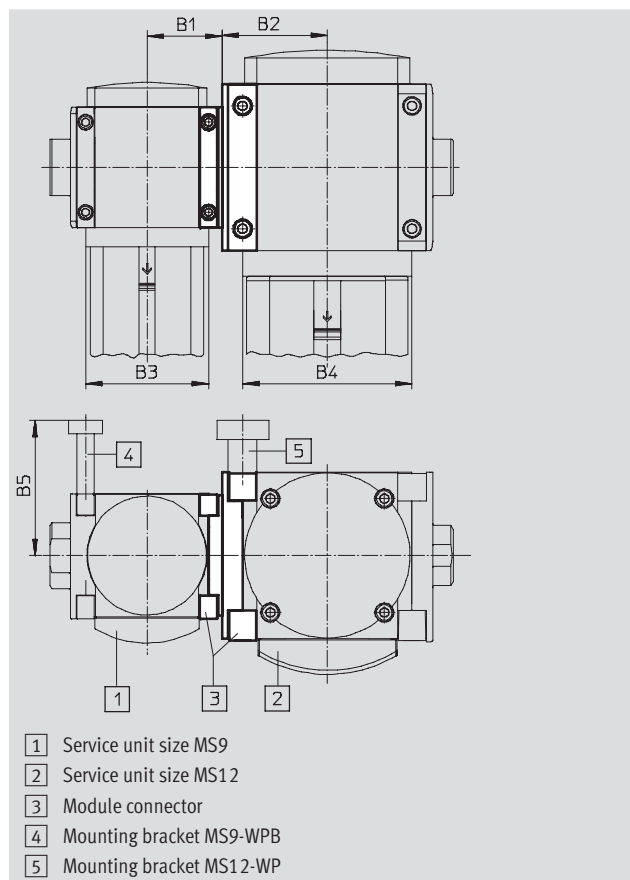
Seals: Nitrile rubber

RoHS-compliant

Free of copper and PTFE

Temperature of medium:

-10 ... +60 °C



 Note

The larger mounting bracket must always be used on the module connector. The mounting bracket must be ordered separately.

Dimensions and ordering data									
Size	B1	B2	B3	B4	B5	CRC ¹⁾	Weight [g]	Part No.	Type
MS9/12	55	77	90	124	99	2	990	552 953	MS9-12-ARMV

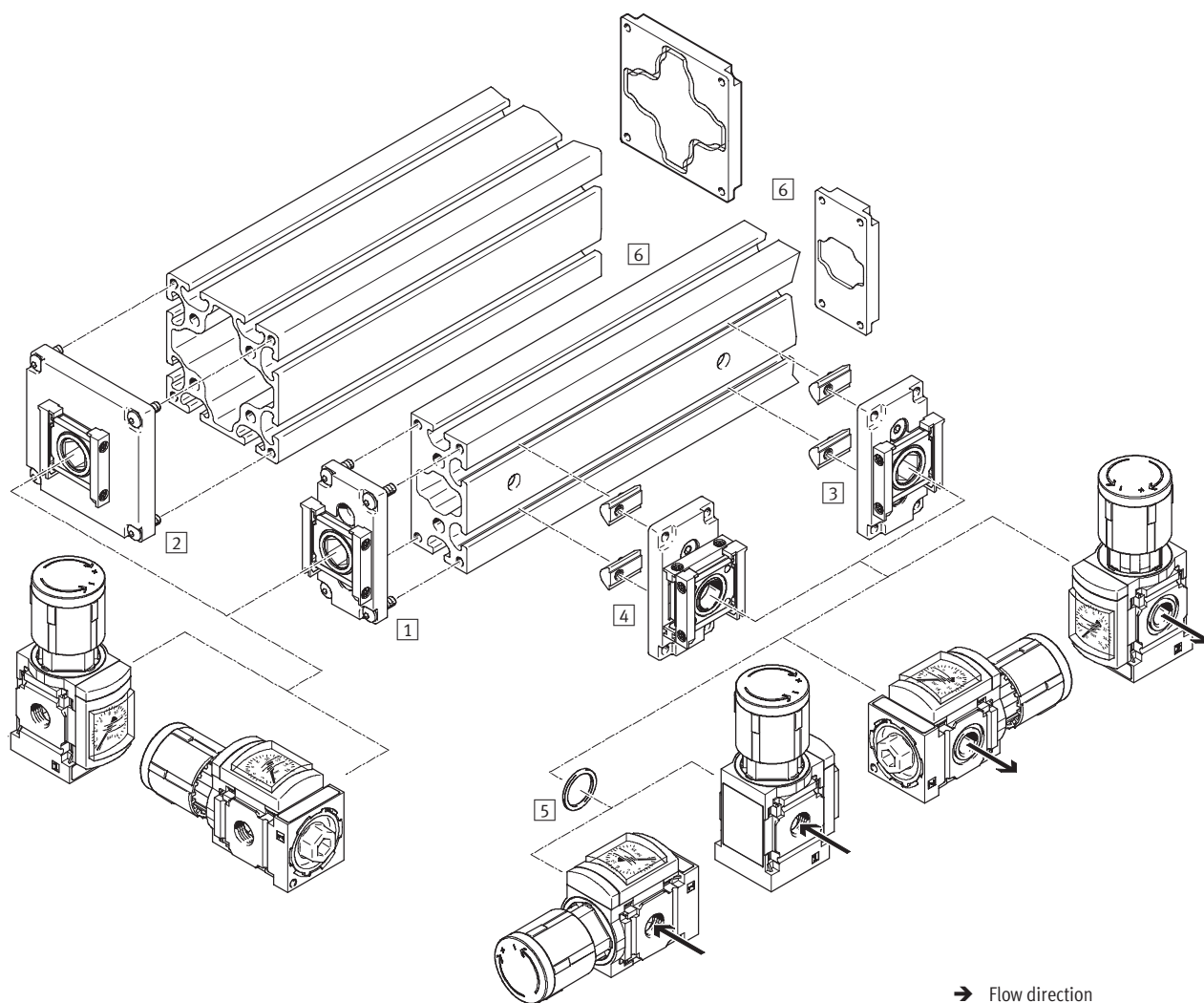
1) Corrosion resistance class 2 as per Festo standard 940 070

Components subject to moderate corrosion stress. Externally visible parts with primarily decorative surface requirements which are in direct contact with a normal industrial environment or media such as coolants or lubricating agents.

Accessories, MS series

Mounting attachments MS4/MS6

FESTO



Mounting attachments		→ Page/Internet
1	Power supply module MS4/6-E-IPM-40-80	23
2	Power supply module MS4/6-E-IPM-80-80	24
3	Branching module MS4/6-A-IPM-80	25
4	Branching module MS4/6-A-RMV-IPM-80	26
5	Sealing ring MS4/6-NNR	27
6	Profile 40x80/80x80, cover plate, supply plate, drilling jig	On request

Note

Further mounting attachments are required for mounting a service unit combination → 6

Accessories, MS series

Mounting attachments MS4/MS6

Power supply module

MS4/6-E-IPM-40-80

- For mounting a service unit to the front of a profile of size 40x80
- Module connector can be repositioned by 90° for horizontal mounting of a service unit

Material:

Connecting plate, hollow bolt, module connector: Die-cast aluminium

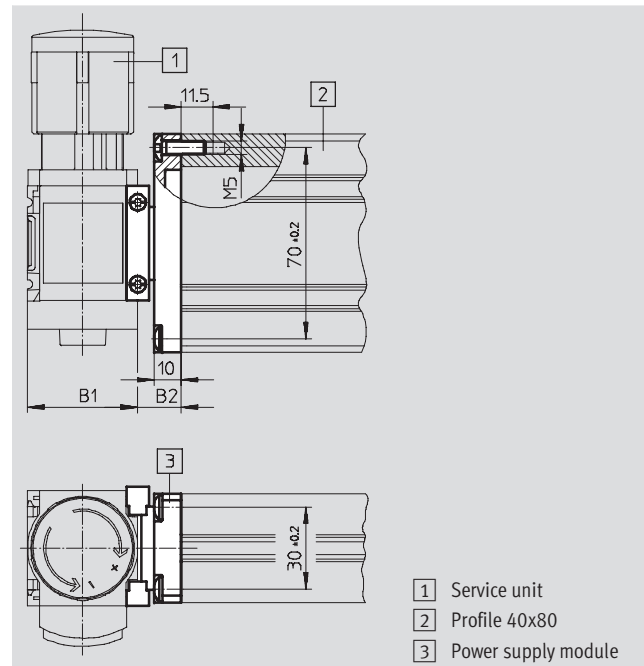
Screws: Steel

Seals: Nitrile rubber

RoHS-compliant

Temperature of medium:

-10 ... +60 °C



Dimensions and ordering data						
Size	B1	B2	CRC ¹⁾	Weight [g]	Part No.	Type
MS4	40.2	16	2	109	543 494	MS4-E-IPM-40-80
MS6	62	16	2	141	543 496	MS6-E-IPM-40-80

1) Corrosion resistance class 2 as per Festo standard 940 070
Components subject to moderate corrosion stress. Externally visible parts with primarily decorative surface requirements which are in direct contact with a normal industrial environment or media such as coolants or lubricating agents.

Accessories, MS series

Mounting attachments MS4/MS6

FESTO

Power supply module

MS4/6-E-IPM-80-80

- For mounting a service unit to the front of a profile of size 80x80
- Module connector can be repositioned by 90° for horizontal mounting of a service unit

Material:

Connecting plate, hollow bolt, module

connector: Die-cast aluminium

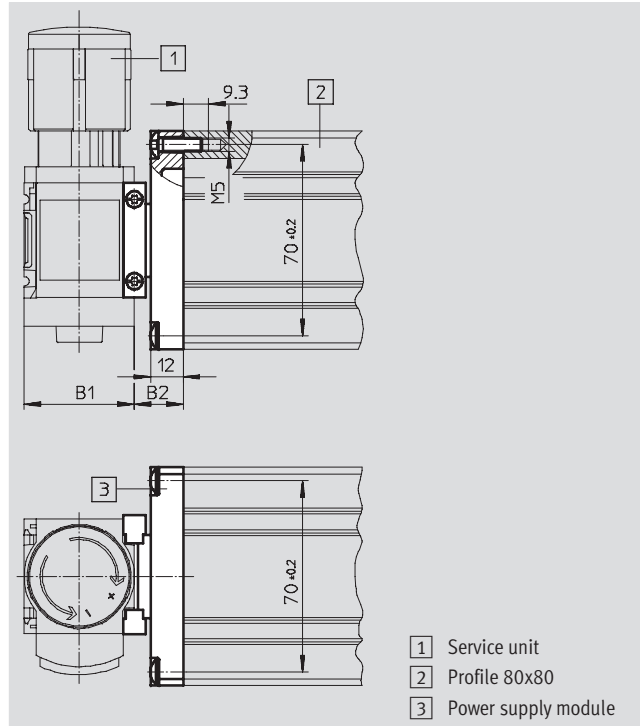
Screws: Steel

Seals: Nitrile rubber

RoHS-compliant

Temperature of medium:

-10 ... +60 °C



Dimensions and ordering data						
Size	B1	B2	CRC ¹⁾	Weight [g]	Part No.	Type
MS4	40.2	18	2	186	543 495	MS4-E-IPM-80-80
MS6	62	18	2	218	543 497	MS6-E-IPM-80-80

1) Corrosion resistance class 2 as per Festo standard 940 070

Components subject to moderate corrosion stress. Externally visible parts with primarily decorative surface requirements which are in direct contact with a normal industrial environment or media such as coolants or lubricating agents.

Accessories, MS series

Mounting attachments MS4/MS6

Branching module MS4/6-A-IPM-80

- For mounting a service unit on the long side of a profile
- Module connector can be repositioned by 90° for horizontal mounting of a service unit

Material:

Connecting plate, hollow bolt, module connector: Die-cast aluminium

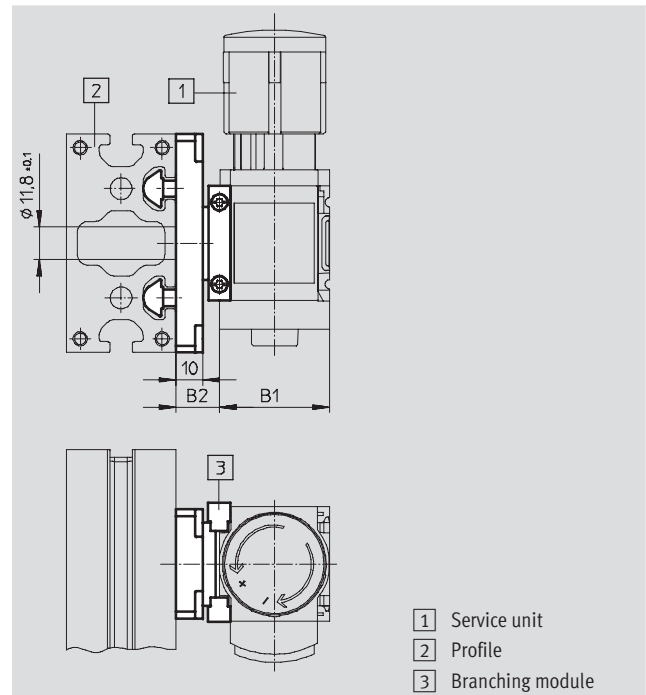
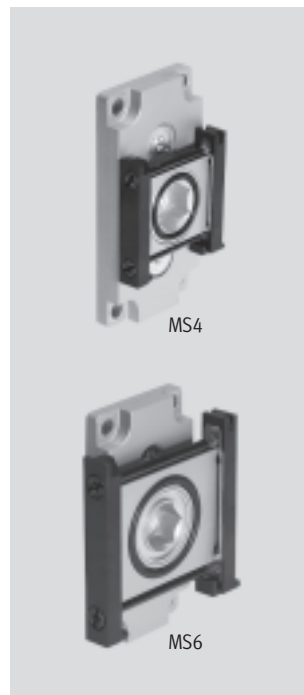
Screws: Steel

Seals: Nitrile rubber

RoHS-compliant

Temperature of medium:

–10 ... +60 °C



Dimensions and ordering data						
Size	B1	B2	CRC ¹⁾	Weight [g]	Part No.	Type
MS4	40.2	16	2	124	543 498	MS4-A-IPM-80
MS6	62	16	2	156	543 499	MS6-A-IPM-80

1) Corrosion resistance class 2 as per Festo standard 940 070
Components subject to moderate corrosion stress. Externally visible parts with primarily decorative surface requirements which are in direct contact with a normal industrial environment or media such as coolants or lubricating agents.

Accessories, MS series

Mounting attachments MS4/MS6

FESTO

Branching module

MS4/6-A-RMV-IPM-80

- For mounting a service unit on the long side of a profile
- Suitable for manifold mounting (the fittings on the module connector can be accessed from above for fast replacement of an individual component)
- Module connector can be repositioned by 90° for horizontal mounting of a service unit

Material:

Connecting plate, hollow bolt,

module connector:

Die-cast aluminium

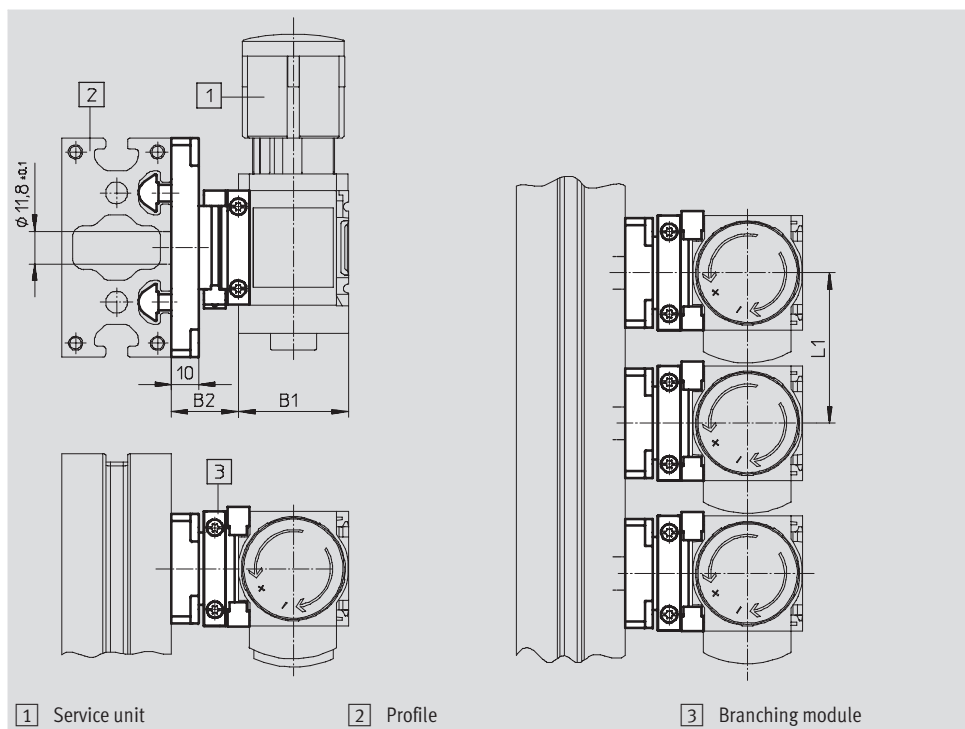
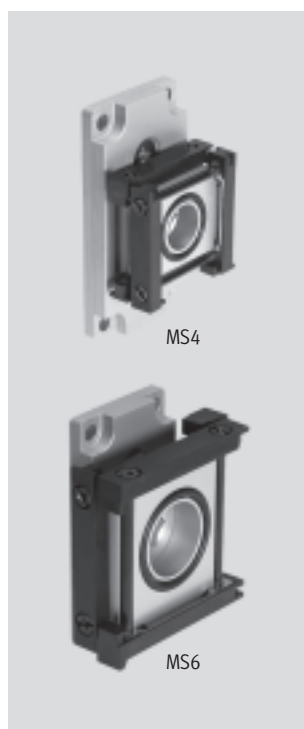
Screws: Steel

Seals: Nitrile rubber

RoHS-compliant

Temperature of medium:

-10 ... +60 °C



Dimensions and ordering data							
Size	B1	B2	L1	CRC ¹⁾	Weight [g]	Part No.	Type
MS4	40.2	24.5	55	2	150	543 500	MS4-A-RMV-IPM-80
MS6	62	27	77	2	236	543 501	MS6-A-RMV-IPM-80

1) Corrosion resistance class 2 as per Festo standard 940 070

Components subject to moderate corrosion stress. Externally visible parts with primarily decorative surface requirements which are in direct contact with a normal industrial environment or media such as coolants or lubricating agents.

Accessories, MS series

Mounting attachments MS4/MS6

Sealing ring MS4/6-NNR

- For sealing a branching module
MS-A-IPM when used as a power
supply module

Material:

Nitrile rubber

RoHS-compliant

Temperature of medium:

–10 ... +60 °C



Dimensions and ordering data			
Size	CRC ¹⁾	Part No.	Type
MS4	2	543 492	MS4-NNR
MS6	2	543 493	MS6-NNR

- 1) Corrosion resistance class 2 as per Festo standard 940 070
Components subject to moderate corrosion stress. Externally visible parts with primarily decorative surface requirements which are in direct contact with a normal industrial environment or media such as coolants or lubricating agents.

Accessories, MS series

Connecting plates MS4/MS6

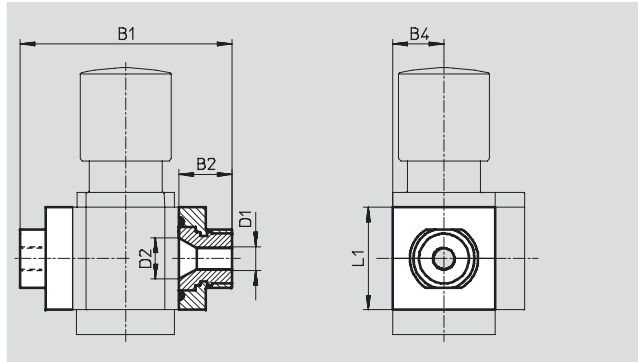
FESTO

Connecting plate MS4/6-AG...

(order code: AG...)

- Adapter for pneumatic connection
- MS6-AGE for implementing threaded connection G $\frac{3}{4}$

Material:
Aluminium



Dimensions and ordering data									
Size	B1	B2	B4	D1	D2	L1	Weight [g]	Part No.	Type
MS4	83.5	21.5	21	G $\frac{1}{8}$	16.8	42	128	526 068	MS4-AGA
				G $\frac{1}{4}$				526 069	MS4-AGB
				G $\frac{3}{8}$				526 070	MS4-AGC
MS6	115	26.5	31	G $\frac{1}{4}$	24	62	300	526 080	MS6-AGB
				G $\frac{3}{8}$				526 081	MS6-AGC
				G $\frac{1}{2}$				526 082	MS6-AGD
				G $\frac{3}{4}$				526 083	MS6-AGE

- || - Note: This product conforms with the ISO 1179-1 standard and the ISO 228-1 standard.

Accessories, MS series

Connecting plates MS4/MS6

FESTO

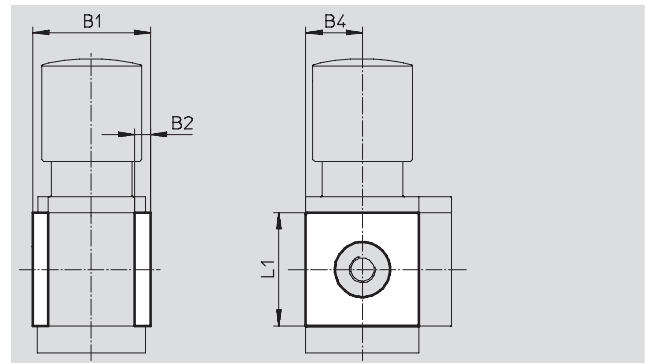
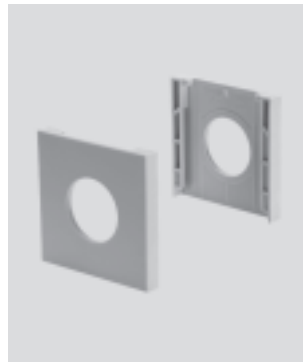
Cover plate MS4/6-END

- Can be used to cover the body sides of the first and last module if connecting plates are not used

Material:

Reinforced polyamide

Free of copper and PTFE



Dimensions and ordering data						
Size	B1	B2	B4	L1	Part No.	Type
MS4	43.6	6	21	42	538 779	MS4-END
MS6	67	8	31	62	538 780	MS6-END

Mounting plate MS4/6-AEND

(order code: WBE; scope of delivery includes wall mounting plate MS6-WPB)

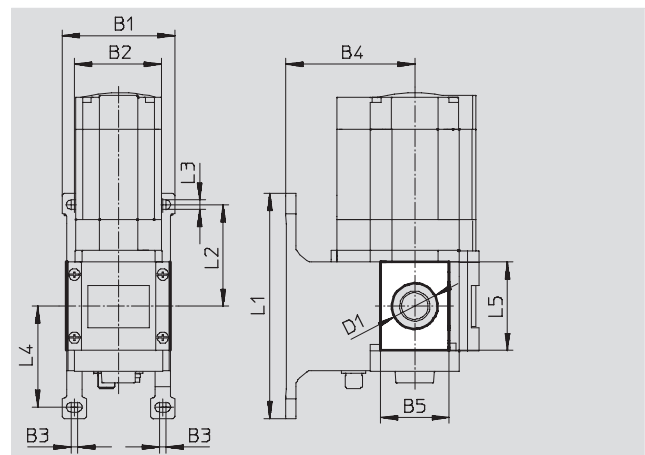
- In combination with mounting bracket MS-WP or MS-WPB for individual wall mounting via direct thread

Material:

Reinforced polyamide

RoHS-compliant

Free of copper and PTFE



Dimensions and ordering data																
Size	B1	B2	B3	B4		B5	D1	L1	L2	L3	L4	L5	CRC ¹⁾	Weight [g]	Part No.	Type
				WP	WPB											
MS4	55.2	40.2	4	44	66	30.4	20.3	106	46.5	5.6	46.7	42	2	4	542 966	MS4-AEND
MS6	79	62	4.5	54	90.5	48.4	32	158	71	6.6	71	62	2	17	535 408	MS6-AEND

1) Corrosion resistance class 2 as per Festo standard 940 070

Components subject to moderate corrosion stress. Externally visible parts with primarily decorative surface requirements which are in direct contact with a normal industrial environment or media such as coolants or lubricating agents.

Accessories, MS series

Connecting plates MS9

FESTO

Connecting plate MS9-AG...

(order code: AG...)

- Adapter for pneumatic connection

Material:

Connecting plate, hollow bolt:

Die-cast aluminium

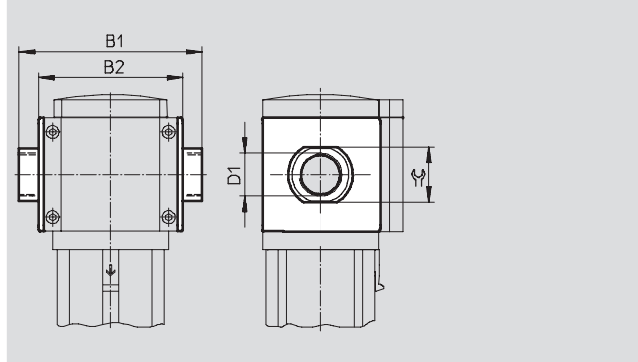
Seals: Nitrile rubber

RoHS-compliant

Free of copper and PTFE

Temperature of medium:

-10 ... +60 °C



Dimensions and ordering data								
Size	B1	B2	D1	≅	KBK1)	Weight [g]	Part No.	Type
MS9	132	112	G1/2	30	2	300	552 954	MS9-AGD
	132	112	G3/4	36	2	300	552 955	MS9-AGE
	142	112	G1	41	2	300	552 956	MS9-AGF
	162	112	G1 1/4	50	2	400	552 957	MS9-AGG
	176	112	G1 1/2	55	2	400	552 958	MS9-AGH

1) Corrosion resistance class 2 as per Festo standard 940 070

Components subject to moderate corrosion stress. Externally visible parts with primarily decorative surface requirements which are in direct contact with a normal industrial environment or media such as coolants or lubricating agents.

• Note: This product conforms with the ISO 1179-1 standard and the ISO 228-1 standard.

Accessories, MS series

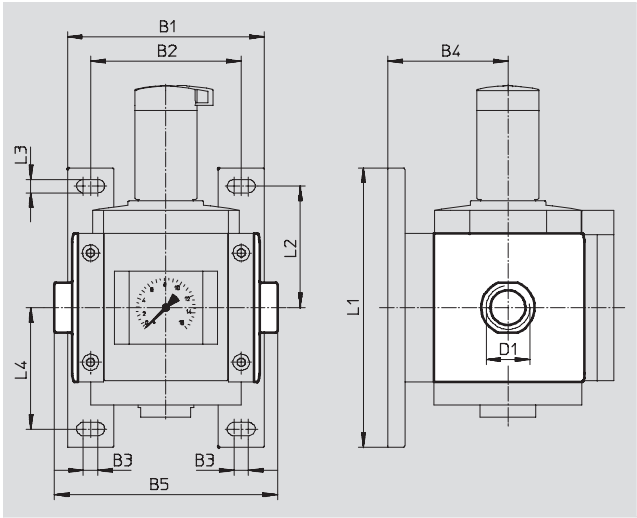


Connecting plates MS12

Connecting plate MS12-AG...
(order code: AG...)

- Adapter for pneumatic connection

Material:
Die-cast aluminium
Free of copper and PTFE



Dimensions and ordering data													
Size	B1	B2	B3	B4	B5	D1	L1	L2	L3	L4	Weight [g]	Part No.	Type
MS12	162	124	12	99	184	G1	230	100	11	100	1,300	537 135	MS12-AGF
					184	G1¼						537 136	MS12-AGG
					184	G1½						537 137	MS12-AGH
					196	G2						537 138	MS12-AGI

• • Note: This product conforms with the ISO 1179-1 standard and the ISO 228-1 standard.

Accessories, MS series

Security components MS4/MS6/MS9/MS12

FESTO

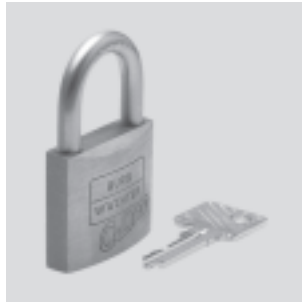
Padlock LRVS-D

Material:

Housing: Brass

Ambient temperature:

-20 ... +60 °C



Ordering data			
Size	Weight [g]	Part No.	Type
MS4/MS6/ MS9/MS12	120	193 786	LRVS-D