

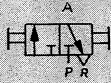
Manually Actuated Hand Slide Valve

FESTO

3/2 - 3 Way, 2 Position Valves, Directly Actuated, M 5 to G 3/4 ISO and 1/8" to 1/2" NPT

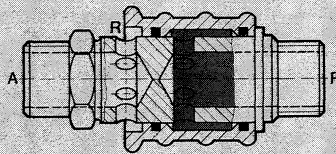
Hand Slide Valve

Type W-...

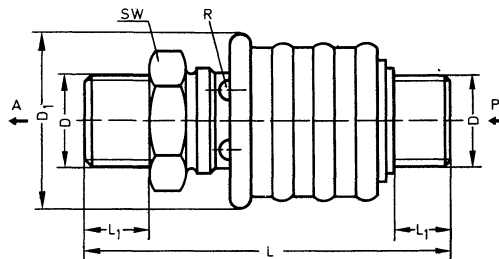
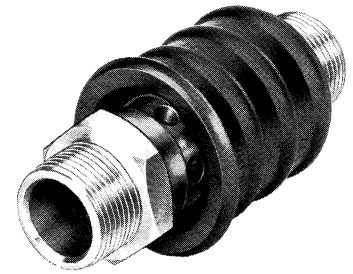


The valve is actuated by moving the sleeve in a longitudinal direction.

The main function of this valve is to supply and exhaust air to components or controls.



- 1 (P) = Supply (or vacuum)
- 2 (A) = Outlet
- 3 (R) = Exhaust



SW = wrench sizes, mm

Type	D Connection	D ₁ in / mm	L in / mm	L ₁ in / mm	SW mm
W-3-M5	M5	0.8 / 20	1.8 / 45.5	0.2 / 4.5	9
W-3-1/8	G 1/8 ISO	0.95 / 24	2.0 / 51.5	0.3 / 6.5	14
W-3-1/8-NPT	1/8 NPT	0.95 / 24	2.28 / 58	0.39 / 10	14
W-3-1/4	G 1/4 ISO	1.4 / 35	2.81 / 71.5	0.3 / 8.5	17
W-3-1/4-NPT	1/4 NPT	1.358 / 34,5	3.307 / 84	0.591 / 15	17
W-3-3/8	G 3/8 ISO	1.8 / 45	3.25 / 82.5	0.4 / 10.5	27
W-3-3/8-NPT	3/8 NPT	1.772 / 45	3.583 / 91	0.591 / 15	27
W-3-1/2	G 1/2 ISO	1.8 / 45	3.5 / 88.5	0.5 / 13.5	27
W-3-1/2-NPT	1/2 NPT	1.772 / 45	3.898 / 99	0.748 / 19	27
W-3-3/4	G 3/4 ISO	2.0 / 50	4.1 / 103	0.63 / 14	32

Order Number	ISO Connection	4451 W-3-M5	2339 W-3-1/8	2340 W-3-1/4	2341 W-3-3/8	2342 W-3-1/2	4052 W-3-3/4
	NPT Connection		10414 W-3-1/8-NPT	10415 W-3-1/4-NPT	10416 W-3-3/8-NPT	10417 W-3-1/2-NPT	
Medium	Compressed air (filtered, lubricated or unlubricated) can be used for vacuum†						
Mounting	In-line (male threaded)						
Connection		M5	G 1/8 ISO 1/8 NPT	G 1/4 ISO 1/4 NPT	G 3/8 ISO 3/8 NPT	G 1/2 ISO 1/2 NPT	G 3/4 ISO
Orifice Size		0.10 in / 2.5 mm	0.12 in / 3 mm	0.28 in / 7 mm	0.35 in / 9 mm	0.47 in / 12 mm	0.71 in / 18 mm
C _v Factor 1 → 2 (P → A)		0.12 C _v / 120 l/m	0.60 C _v / 600 l/m	1.0 C _v / 1000 l/m	1.4 C _v / 1400 l/m	2.0 C _v / 2000 l/m	6.80 C _v / 6800 l/m
Pressure Range		28.5 in Hg to 120 psi / -0.95 to +8 bar		28.5 in Hg to 150 psi / -0.95 to +10 bar			
Operating Force at 90 psi / 6 bar Supply*		2.25 lbf / 10 N	2.25 lbf / 10 N	4.5 lbf / 20 N	4.5 lbf / 20 N	4.5 lbf / 20 N	6.7 lbf / 30 N
Design	Slide valve, without return spring						
Material	Housing: Brass, Al, blue anodized. Seals: Buna N						
Weight		0.055 lb / 0.025 kg	0.088 lb / 0.040 kg	0.240 lb / 0.110 kg	0.617 lb / 0.280 kg	0.660 lb / 0.300 kg	0.882 lb / 0.400 kg

* 14 to 140°F / -10 to +60°C

† Vacuum connection at 1 (P)