

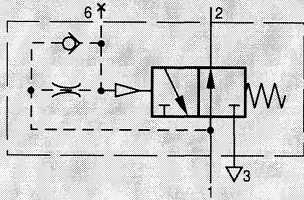
Compact 2000 / M5/2N System Valves

One-Shot Valve

One-Shot Valve

With sub-base 2n

Type VLK-3-PK-3

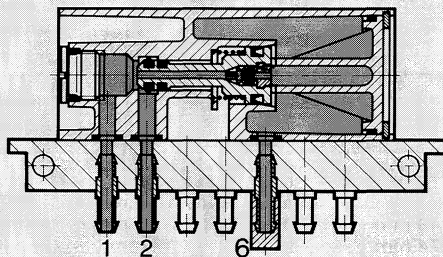


The one-shot valve produces a brief pulse from a continuous signal. After pressure is applied, 1 is connected to 2 and the pilot pressure rises slowly via a restrictor and shifts the valve. 1 is then blocked and 2 exhausted. The valve is reset only after 1 has been exhausted.

The pulse duration is pressure-dependent and is not adjustable, but can be increased by adding a volume at connection 6.

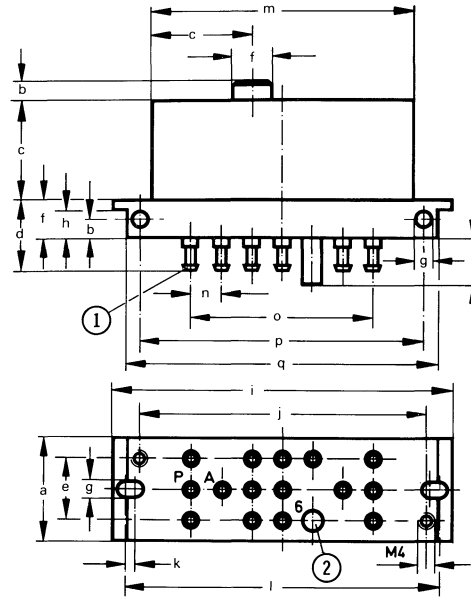
To extend pulse times, remove the protective cap from port 6 and connect a reservoir. For reservoirs, see Type VZS (or CRVZS) in brochure 275319.

For frame mounting, see page 685.



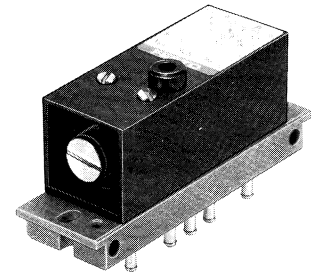
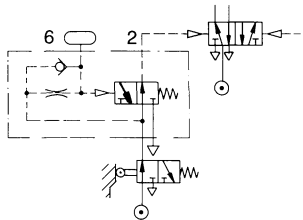
1 (P) = Supply
2 (A) = Outlet
3 (R) = Exhaust
12 (Z) = Pilot
6 = Connection for Reservoir

Type VLK-3-PK-3



- ① Barbed fitting for 3 mm plastic tubing
- ② Port 6 with protective cap for connecting reservoir

Sample Application:



Dimensions

a	1.06 in / 26.8 mm
b	0.20 in / 5 mm
c	1.02 in / 26 mm
d	0.73 in / 18.5 mm
e	0.63 in / 16 mm
f	0.39 in / 10 mm
g	0.17 in / 4.4 mm
h	0.30 in / 7.7 mm
i	3.48 in / 88.5 mm
j	2.95 in / 75 mm
k	0.09 in / 2.3 mm
l	3.19 in / 81 mm
m	2.68 in / 68 mm
n	0.31 in / 8 mm
o	1.89 in / 48 mm
p	2.91 in / 74 mm
q	3.18 in / 80.8 mm
r	0.47 in / 12 mm

Wear Parts Kit

For Type	VLK-3-PK-3
Order Number	104218

Supply Pressure psi / bar	Pulse Duration ms ($\pm 15\%$)		Reset Time ms ($\pm 20\%$)	
	Without Reservoir	With 6 in ³ / 100 cm ³ Reservoir	Exhaust to	
			0%	10%
30 / 2	300 (620)	350 (750)	500	200
90 / 6	210 (500)	270 (550)	500	150
120 / 8	200 (440)	250 (500)	510	160

Valves in parentheses reflect a 1 in³ volume increase at port 6.

Order Number	9639 VLK-3-PK-3
Medium	Compressed air (filtered, lubricated or unlubricated)
Design	Disc valve
Mounting	2 through-holes in sub-base, or on mounting frame
Connection	Barbed fittings for 3 mm plastic tubing
Orifice Size	0.10 in / 2.5 mm
C _v Factor (1 → 2)	0.09 C _v / 90 l/min
Supply Pressure Range*	37.5 to 120 psi / 2.5 to 8 bar
Pulse Duration	See table above
Reset Time	See table above
Materials	Housing: aluminum. Sub-base: plastic, brass. Seals: Buna N.
Weight	0.375 lb / 0.170 kg

* 14 to +140°F / -10 to +60°C