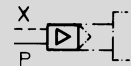


Non-Contact Pneumatic Sensors

Pressure Amplifiers for Sensor Output Signals

Amplifier Actuator

Type VE-5



With pressure supply port through which additional pressure of 1.5 to 4.5 psi / 0.1 to 0.3 bar must be supplied.

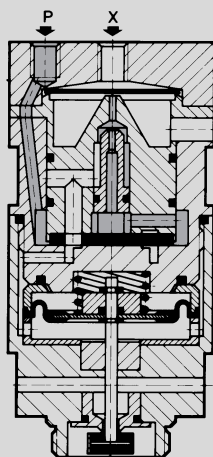
Type LSK-6000



Amplifier heads are low pressure actuated elements which attach to various valve bodies and control the air pilot of the valve. Their function is similar to that of 3 way, 2 position, piloted valves.

When not in operation, a spring-loaded plunger blocks an orifice in the main body of the valve. When a signal is present at port X, the plunger rises and opens the passage.

Example: Type VE-...



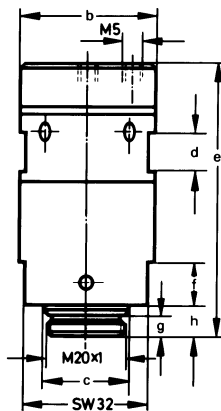
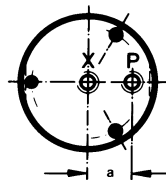
P = Supply
X = Pilot



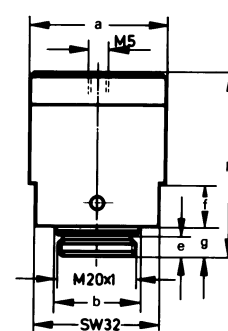
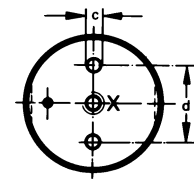
Type VE-...

Type LSK-...

Type VE-...



Type LSK-...



Dimensions:

Type VE-...

- a 0.45 in / 11.5 mm
- b 1.38 in / 35 mm
- c 0.87 in / 22 mm
- d 0.39 in / 10 mm
- e 2.80 in / 71 mm
- f 0.47 in / 12 mm
- g 0.22 in / 5.5 mm
- h 0.28 in / 7 mm

Type LSK-...

- a 1.38 in / 35 mm
- b 0.87 in / 22 mm
- c 0.13 in / 3.2 mm
- d 0.79 in / 20 mm
- e 0.22 in / 5.5 mm
- f 0.47 in / 12 mm
- g 0.28 in / 7 mm
- h 1.81 in / 46 mm

SW = wrench size, mm

Order Number	Part No./Type	3717 VE-5	3716 LSK-6000
Medium		Compressed air (filtered, unlubricated)	
Mounting		M20 x 1 thread	
Connection		M5	
Supply Pressure Range at P*		1.5 to 4.5 psi / 0.1 to 0.3 bar	—
Max. Control Pressure at X		4.5 psi / 0.3 bar	38 psi / 2.5 bar
Min. Response Pressure at X		0.007 psi / 0.5 m bar	9 psi / 0.6 bar
Steady Air Consumption, Not Actuated		Max. 0.12 SCFM / 3.3 l/min	
Max. Permissible Operating Pressure for Valve Body		120 psi / 8 bar	150 psi / 10 bar
Design		Nozzle, diaphragm and poppet valve	Poppet valve
Material		Housing: Aluminum, black anodized. Seals: Buna N.	
Weight		0.419 lb / 0.190 kg	0.22 lb / 0.100 kg

* 14 to 140°F / -10 to +60°C