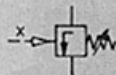


Pressure Dependent Valves

Pressure Actuator, G 1/8

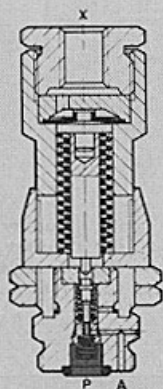
Adjustable Pressure Actuator

Type UV

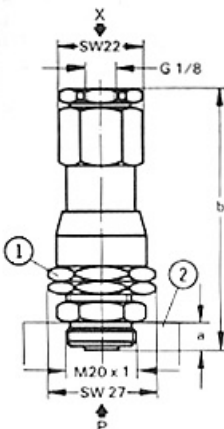


The pressure-dependent actuator is used if a pre-set pressure is required for a switching operation in a pneumatic control system.

As soon as the signal pressure at connection X reaches the value determined on the pressure-sensitive actuator, the passage from P to A opens and the attached valve body is shifted.



P = Supply
A = Outlet
X = Pilot



Dimensions

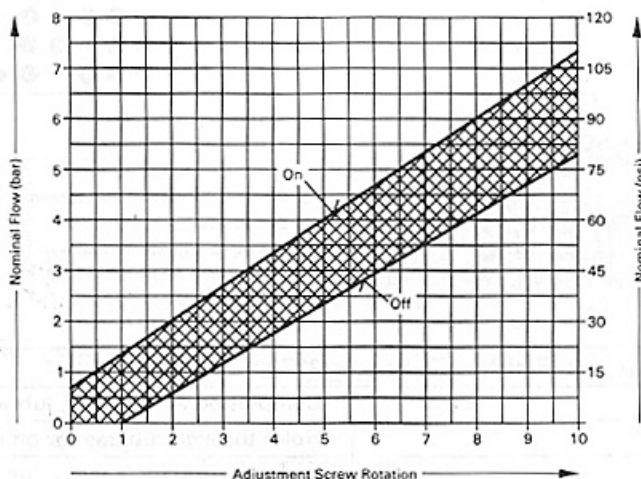
a 0.28 in / 7 mm
b 2.95 in / 75 mm

① Pressure setting
② Main valve body
SW = wrench size, mm



Mounting Capabilities:

This pressure-dependent actuator can be mounted on main valve bodies, Types LC and JLC. It can also be used instead of solenoid actuators on all solenoid-actuated valves with M 20 x 1 threaded connections, the exceptions being Types MC-2-1/8, and MLC-8-3/8-B.



Order Number	Part No./Type	4203 UV
Medium		Compressed air (filtered, lubricated or unlubricated)
Design		Valve attachment for pressure dependent operation
Mounting		M 20 x 1 thread
Connection X		G 1/8 ISO
Pressure Adjustment Range		15 to 50 psi / 1 to 10 bar
Max. Pressure of Main Valve Body		120 psi / 8 bar
Dead Band at 90 psi / 6 bar		12 psi / 0.8 bar
Shift-Point Accuracy at 90 psi / 6 bar		± 1.5 psi / 0.1 bar
Temperature Range		14 to 140°F / -10 to +60°C
Weight		0.242 lb / 0.110 kg