

# Accessories

## Silencers G 1/8 to G 1 and 1/8" to 1/2" NPT

### Silencer

Diecast Al

Type U-...-B  
U-...-B-NPT

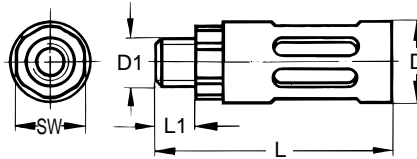


Silencers are used to reduce the noise at the outlet ports of valves.

These slim, rugged, die-cast components are used where space is limited.

The silencing effect is achieved by reducing air speed. The silencers achieve a considerable reduction in exhaust air noise without affecting the speed of the piston rod of a cylinder.

Important: Clean silencers in kerosene or naptha (not with trichloroethylene).



SW = wrench size (mm)

Type	D diameter in / mm	D1	L in / mm	L1 in / mm	SW in / mm
U-1/8-B	0.63 / 16.0	G 1/8 ISO	1.56 / 39.5	0.26 / 6.5	0.55 / 14
U-1/8-B-NPT	0.63 / 16.0	1/8 NPT	1.56 / 39.5	0.26 / 6.5	0.55 / 14
U-1/4-B	0.77 / 19.5	G 1/4 ISO	2.22 / 56.5	0.33 / 8.5	0.67 / 17
U-1/4-B-NPT	0.77 / 19.5	1/4 NPT	2.22 / 56.5	0.33 / 8.5	0.67 / 17
U-3/8-B	0.98 / 25.0	G 3/8 ISO	3.48 / 88.5	0.41 / 10.5	0.75 / 19
U-3/8-B-NPT	0.98 / 25.0	3/8 NPT	3.48 / 88.5	0.41 / 10.5	0.75 / 19
U-1/2-B	1.10 / 28.0	G 1/2 ISO	4.72 / 120.0	0.55 / 14	0.94 / 24
U-1/2-B-NPT	1.10 / 28.0	1/2 NPT	4.72 / 120.0	0.55 / 14	0.94 / 24
U-3/4-B	1.50 / 38.0	G 3/4 ISO	5.59 / 142.0	0.63 / 16	1.26 / 32
U-1-B	1.88 / 47.8	G1 ISO	7.06 / 179.4	0.59 / 15	1.42 / 36

Pressure Range			0 to 150 psi / 0 to 10 bar				
Temperature Range			-50°F to +158°F / -10°C to +70°C				
Order No.	Type	Thread	Noise level at 90 psi / 6 bar to atmosphere* dB (A)	Orifice size at inlet in / mm	C <sub>v</sub> factor** C <sub>v</sub> / l/min	Weight lb / kg	Materials
Part No.							
6841	U-1/8-B	G 1/8 ISO	74	0.21 / 5.3	1.45 / 1450	0.018 / 0.008	Housing: Diecast Aluminum Insert: Plastic
12638	U-1/8-B-NPT	1/8 NPT	74	0.21 / 5.3	1.45 / 1450	0.018 / 0.008	
6842	U-1/4-B	G 1/4 ISO	78	0.30 / 7.5	3.00 / 3000	0.037 / 0.017	
12639	U-1/4-B-NPT	1/4 NPT	78	0.30 / 7.5	3.00 / 3000	0.037 / 0.017	
6843	U-3/8-B	G 3/8 ISO	80	0.35 / 9.0	4.50 / 4500	0.082 / 0.037	
12740	U-3/8-B-NPT	3/8 NPT	80	0.35 / 9.0	4.50 / 4500	0.082 / 0.037	
6844	U-1/2-B	G 1/2 ISO	80	0.55 / 14.0	6.00 / 6500	0.165 / 0.075	
12741	U-1/2-B-NPT	1/2 NPT	80	0.55 / 14.0	6.00 / 6500	0.165 / 0.075	
6845	U-3/4-B	G 3/4 ISO	81	0.67 / 17.0	11.0 / 11000	0.265 / 0.120	
151990	U-1-B	G 1 ISO	82	0.93 / 23.5	17.3 / 17300	0.514 / 0.233	

\* Measured at a distance of 3 ft / 1 m

\*\* At 90 psi / 6 bar