

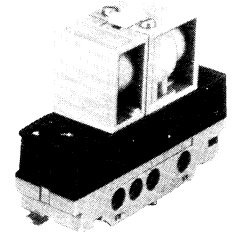
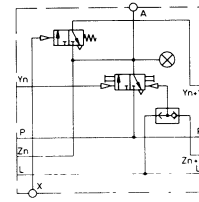
### Stepper "A" Module

Type TAA-2 N-PK-3-01-B

One "A" stepper module is required for each step. Each "A" module performs four logic functions:

1. Provides an output signal to perform a specific function or operation (for example: cylinder A extend), or to signal multiple valve functions.
2. Processes a feed-back signal (for example: from a limit valve at end of cylinder "A" stroke) indicating function completed (i.e. cylinder extended).
3. Given step completion, the "A" module signals the next module in the sequence to initiate its respective output signal (example: cylinder B extended).
4. Cancels the output signal from the previous step (step prior to cylinder "A" extension), ensuring that only one operation takes place at a time.

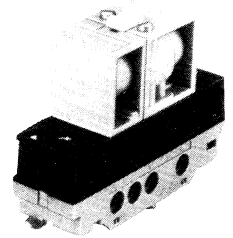
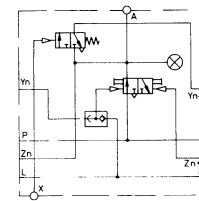
All "A" modules can be reset to an output "off" condition via a pilot signal at the 'L', reset port.



### Stepper "B" Module

Type TAB-2 N-PK-3-01

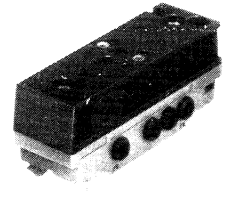
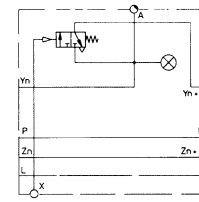
The "B" module is used to control the last step in a stepper sequence. It performs the same function as the "A" module except when a 'reset' signal is present. In contrast to the "A" module (where reset sets output to "off") a reset signal to a "B" module initiates an output "on" condition, used to restart the sequencing cycle.



### Stepper "C" Module

Type TAC-2 N-PK-3-01

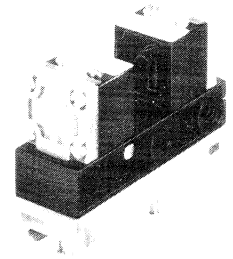
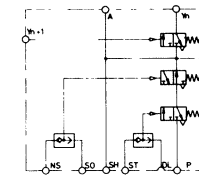
The economical "C" module can be used to replace the "A" module in sequencing steps where the preceding step signal does not have to be cancelled. You get the same sequencing reliability at a lower cost.



### Command Memory Module

Type SBA-2 N-PK-3 / with input logic

The "memory module provides a cost-effective means of simplifying the design of multiple input control functions into the stepper sequencing chain. One, compact module enables actuation of START, STOP, EMERGENCY STOP, AUTOMATIC/MANUAL, Continuous/Single Cycle operation.



Order Number	10535 TAA-2 N-PK-3-01-B	10536 TAB-2 N-PK-3-01-B	9414 TAC-2 N-PK-3-01	9708 SBA-2 N-PK-3	9163 TAP-E-2 N
Medium	Compressed air (filtered, lubricated or unlubricated)				
Mounting	On mounting frame				
Connection	Barbed fitting for 3 mm tubing				3 mm barbed fitting; P: G 1/8
Orifice Size	0.08 in / 2 mm			0.12 in / 3 mm	—
C <sub>v</sub> Factor (P → A)	0.06 Cv / 60 l/min			0.07 Cv / 70 l/min	—
Supply Pressure Range*	30 to 120 psi / 2 to 8 bar				
Design	Seat valve with integrated AND and OR logic elements		AND Logic element	Diaphragm-controlled seat valves with built-in AND/OR units	—
Temperature Range	14 to 140°F / 0 to +60°C				
Materials	Housing: Plastic, Al. Seals: Buna N			Housing: Plastic, die-cast Zn Sub-base: Plastic, brass, Seals: Buna N	Diecast Al.
Weight	0.275 lb / 0.125 kg		0.209 lb / 0.095 kg	0.772 lb / 0.350 kg	0.260 lb / 0.120 kg

\* 14 to 140°F