

Manually Actuated Valves for Panel Mounting

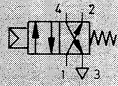
4/2 - 4 Way, 2 Position Valves, Piloted, G 1/8 ISO

FESTO

Basic Valve for Panel Mounting

Spring Return with mounting for various styles of actuators

Type SVS-4-1/8



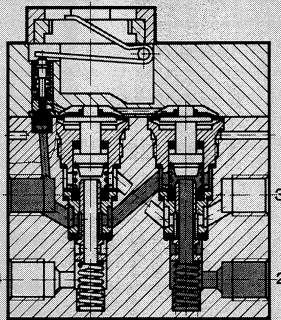
A variety of actuators may be attached to this valve. Actuators are available in 7/8 or 1-3/16 in diameters to fit standard mounting holes.

A quick coupling system enables fast assembly and disassembly of the actuator and valve.

- Fast installation
- Wide range of actuators
- Wide range of valves
- Low actuation force
- Standard mounting diameters
- High flow in compact valve
- Corrosion resistant construction

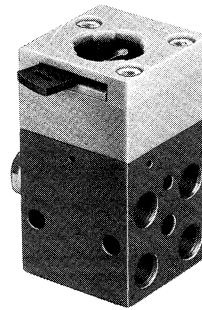
Dimensions: See page 767.

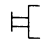
Valve Body:
Type SVS-4-1/8



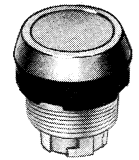
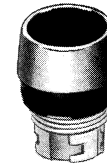
- 1 (P) = Supply
- 4, 2 (A, B) = Outlet
- 3 (R) = Exhaust

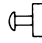
Valve for
Panel Mounting
Type SVS-4-1/8



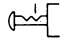
Actuators:
Push-Button
Type T-22-S 
T-22-G
T-22-R

T-30-S
T-30-G
T-30-R

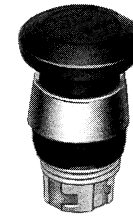
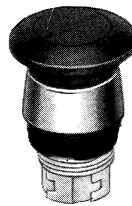



Mushroom
Push-Button
Type P-22-S 

P-30-S

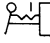
Mushroom Push-Button
with Detent 
Type PR-22-R

PR-30-R

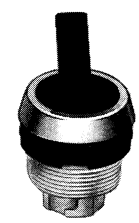
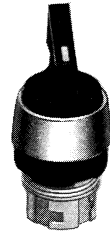


Selector Actuator
Type N-22-S 

N-30-S

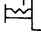
Toggle Actuator
Type H-22-S 

H-30-S

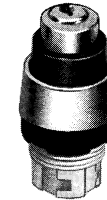


Mushroom Push-Button
with Detent, Locking Capability 
Type PRS-22-R

PRS-30-R

Key Actuator 
Type Q-22

Q-30



Order Number	Valve Actuators	10192 SVS-4-1/8 See page 762
Medium		Compressed air (filtered, lubricated or unlubricated)
Mounting		Front panel installation (7/8 in and 1-3/16 in dia / 22.5 mm and 30.5 mm dia connections) or 2 thru-holes
Connection		G 1/8 ISO
Orifice Size		0.14 in / 3.5 mm
C _v Factor		0.12 C _v / 120 l/min
Pressure Range		52.5 to 120 / 3.5 to 8 bar
Operating Force at 90 psi / 6 bar Supply *		1.8 lbf / 8 N, with valve actuators - see reverse side
Design		Seat valve, piloted, spring return
Material		Housing: Al, blue anodized, plastic; Seals: Buna N.
Weight		0.452 lb / 0.205 kg

*14 to 140°F / -10 to 60°C

NOTE: This valve and actuators replace the actuators formerly used with the VS-4-1/8 valve.