

# Manually Actuated Valves for Panel Mounting

3/2 - 3 Way, 2 Position Valves, Piloted, G 1/8 ISO

## Basic Valve for Panel Mounting

Spring Return with mounting for various styles of actuators

Type SVS-3-1/8  
SVOS-3-1/8

A variety of actuators may be attached to this valve. Actuators are available in 7/8 or 1-3/16 in diameters to fit standard mounting holes.

A quick coupling system enables fast assembly and disassembly of the actuator and valve.

By blocking port 3 (or 33) with a G 1/8 plug, these valves can function as 2-way, 2-position valves.

- Fast installation
- Wide range of actuators
- Wide range of valves
- Low actuation force
- Standard mounting diameters
- High flow in compact valve
- Corrosion resistant construction

### Accessories:

(Order separately)

Pipe plug

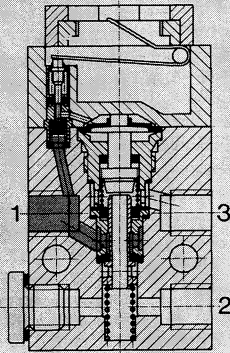
Type B-1/8

Order No. 3568

Dimensions: See page 767.

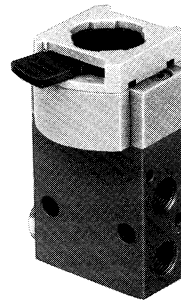
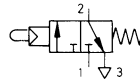
### Valve Body

Type SVS-3-1/8

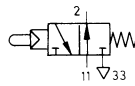


- 1 (P) = Supply  
2 (A) = Outlet  
3 (R) = Exhaust

Basic Valves  
Type SVS-3-1/8



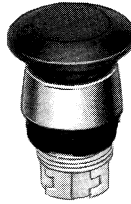
Type SVOS-3-1/8



Mushroom Push-Button  
Type P-22-S



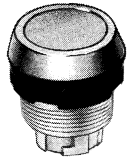
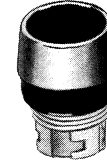
P-30-S



Actuators:  
Push-Button  
Type T-22-S  
T-22-G  
T-22-R



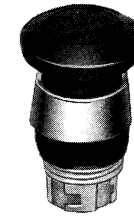
T-30-S  
T-30-G  
T-30-R



Mushroom Push-Button with Detent  
Type PR-22-R



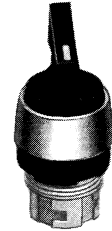
PR-30-R



Selector Actuator  
Type N-22-S



N-30-S



Toggle Actuator  
Type H-22-S



H-30-S



Mushroom Push-Button  
with Detent, Locking Capability  
Type PRS-22-R



PRS-30-R



Key Actuator  
Type Q-22



Q-30



Order Number	Valve	10190 SVS-3-1/8	10191 SVOS-3-1/8
	Actuators	See page 762	
Medium		Compressed air (filtered, lubricated or unlubricated)	
Mounting		Front panel installation (7/8 in / 22.5 mm or 1-3/16 in / 30.5 mm dia. hole) or 2 thru holes	
Connection		G 1/8 ISO	
Orifice Size		0.14 in / 3.5 mm	
C <sub>v</sub> Factor		0.12 C <sub>v</sub> / 120 l/min	
Pressure Range		52.5 to 120 / 3.5 to 8 bar	
Operating Force at 90 psi / 6 bar Supply*		1.80 lbf / 8 N	
Design		Seat valve, piloted, spring return	
Material		Housing: Al, blue anodized, plastic; Seals: Buna N	
Weight		0.253 lb / 0.115 kg	

\*14 to 140°F / -10 to 60°C

NOTE: This valve and actuators replace the actuators formerly used with the VS-3-1/8 and VOS-3-1/8 valves.