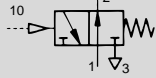
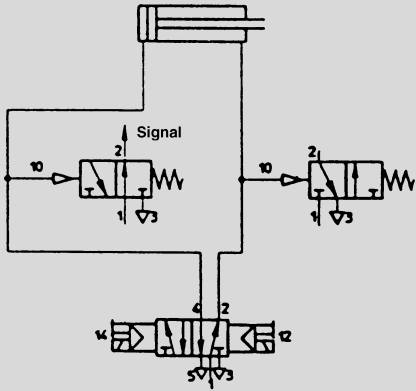
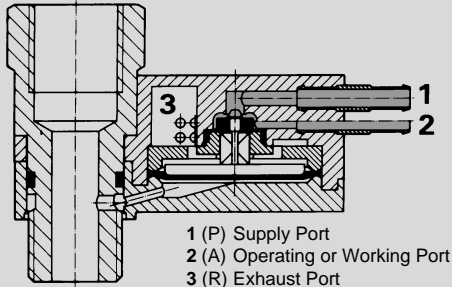


End Position Signal Generator

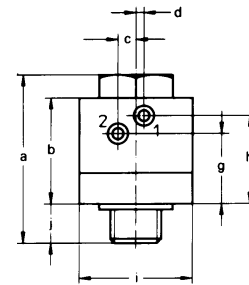
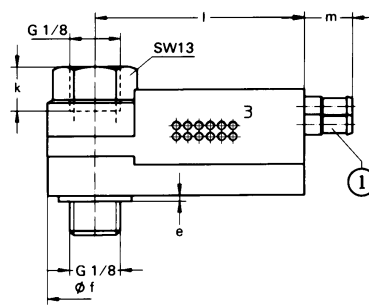
Type PPL-1/8
PPL-1/4



This non-contact signal generator produces a pneumatic signal at the end of the cylinder piston stroke. The switch is directly connected to a cylinder port, and when pressure at that port drops to a predetermined level, it activates the switch. The switch continues to generate a pneumatic signal until internal cylinder pressure increases and reaches a predetermined value.



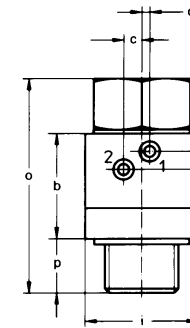
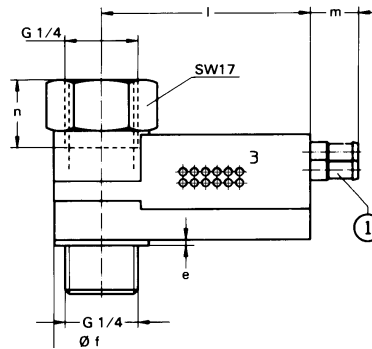
Type PPL-1/8



Dimensions

- a 1.18 in / 30 mm
- b 0.74 in / 18.8 mm
- c 0.13 in / 3.2 mm
- d 0.06 in / 1.4 mm
- e 0.04 in / 1 mm
- f 0.67 in / 17 mm
- g 0.49 in / 12.4 mm
- h 0.61 in / 15.6 mm
- i 0.79 in / 20 mm
- j 0.28 in / 7 mm
- k 0.31 in / 8 mm
- l 1.46 in / 37 mm
- m 0.33 in / 8.5 mm
- n 0.47 in / 12 mm
- o 1.50 in / 38 mm
- p 0.37 in / 9.5 mm

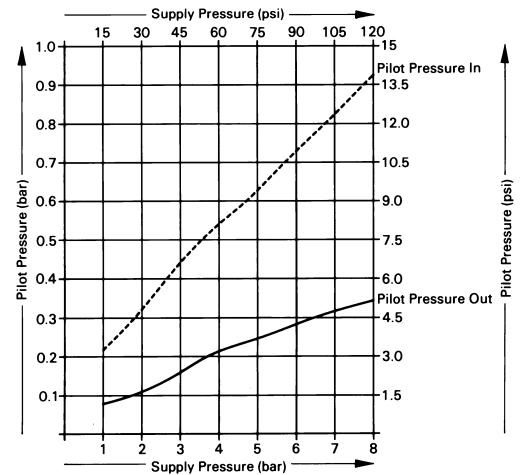
Type PPL-1/4



- ① Barbed fitting for 3/16 in / 3 mm plastic tubing
- SW = wrench size, (mm)

Note:
Max. mounting torque
for PPL-1/8:
35.5 in-lb / 4 Nm;
for PPL-1/4:
71 in-lb / 8 Nm

Minimum pilot pressure as a function of supply pressure



Order Number	Part No./Type	13364 PPL-1/8	13363 PPL-1/4
Medium		Compressed air (filtered, lubricated or unlubricated)	
Design		Poppet valve	
Mounting		Hollow screw, G 1/8 ISO	Hollow screw, G 1/4 ISO
Connection		Barbed fitting for 3/16 in / 3 mm plastic tubing	
Orifice Size		0.197 in / 5 mm	0.256 in / 6.5 mm
C _v Factor		0.48 C _v / 48 l/min	
Pressure Range	Supply	15 to 120 psi / 1 to 8 bar	
	Pilot	Max. 120 psi / 8 bar (see diagram)	
Response Time		In: 11 ms Out: 26 ms	
Temperature Range		+14 to +140°F / -10 to +60°C	
Materials		Housing: Cover and inserts: Plastic; Hollow screw; Aluminum; Seals: Buna N	
Weight		0.053 lb / 0.024 kg	0.062 lb / 0.028 kg