

Compact 2000 / M5/2N System Valves

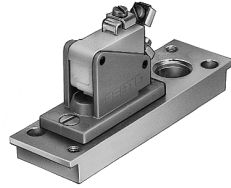
E/P and Vacuum/Electric Converters

Pneumatic Electric Pressure Switch



A pneumatic signal at the pilot port X applies pressure to a diaphragm, that actuates an electrical switch.

Available for mounting on 1N or 2N mounting racks.



Type PE-1/8-1N

Moisture resistant model:

Type PE-1/8-1N-SW

Type PE-1/8-2N

Moisture resistant model:

Type PE-1/8-2N-SW

Type PE-PK-4

Moisture resistant model:

Type PE-PK-4-SW

Two switches on 2N sub-base

Type PE-PK-3 x 2-2N

Vacuum Electric Switch

For converting a vacuum signal into electrical signal, with sub-base



Type VPE-1/8

Moisture resistant design

Type VPE-1/8-SW

Type VPE-1/8-2N

Moisture resistant design

Type VPE-1/8-2N-SW



Accessory:
Protective Cover Type SPE, 6210

Pneumatic Electric Pressure Switch, Type PEN-M5



The PEN-M5 solid state pneumatic/electric converter offers triple switching function selection in a single, compact unit; use it as a:

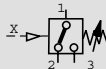
- Differential pressure switch
- Vacuum switch
- Pressure switch



Order Number	8625 PEN-M5 (PNP)	14116 PEN-M5 (NPN) SA 5483
Medium	Compressed air (filtered, lubricated or unlubricated)	
Design	Metal bellow and contactless reed switch	
Mounting	2 thru holes in housing or on 2n mounting frame	
Connection	pneumatic	M5
	electrical	3 strand wire 3 m / 10 ft long
Pressure	pressure switch	3.75 to 120 psi / 0.25 to 8 bar (P ₁)
Range	vacuum switch	6 in to 21 in Hg / -0.20 to -0.7 bar (P ₂)
	differential pressure switch	28 in Hg to 120 psi / -0.95 to 8 bar, Hysteresis max. 3.75 psi / 0.25 bar (P ₁ >P ₂)
Direct Current	12 to 30V DC (Residual ripple max. 10%), Residual voltage at UB=24V DC	
Max Switching Current	350 mA (PNP-output)	
Min Load Resistance	470 Ω	
Type of Protection	IP 67 (DIN 40050)	
Temperature Range	-4 to 140°F / -20 to +60°C	
Switching Frequency	Max. 70 Hz	

(Ref. 8.3/10-1) (98)

Pressure Switch (Adjustable) Type PEV-1/4-B VPEV-1/8



With plug connector per DIN 43650 Adjustable pneumatic signals (PEV) or vacuum signals (VPEV) are converted to electrical signals by the pressure actuated switch.

Accessory:

- Mounting plate
- APL-2N-PEV (PEV-1/4-B)
- APL-2N-VPEV (VPEV-1/8)

for mounting switch on 2n mounting racks. See page 687.



Permissible electrical load:

Type PE-..., VPE-...			Type PE-...-SW, VPE-...-SW								
Direct Current			Alternating Current			Direct Current			Alternating Current		
Volt-age VDC	Load in Ohms A	Induc-tive Load A	Volt-age VAC	Load in Ohms A	Induc-tive Load A	Volt-age VDC	Load in Ohms A	Induc-tive Load A	Volt-age VAC	Load in Ohms A	Induc-tive Load A
12	6	6	250	6	2	15	10	2	125	5	5
24	6	6				30	7	2	250	5	5
60	1	0.5				50	2	1			
110	0.5	0.2				75	1	0.5			
220	0.25	0.1				125	0.5	0.4			
250						250	0.25	0.2			

Order Number	6217 PE-1/8-1N	13681 PE-PK-3 x 2-2N	12592 VPE-1/8
	6484 PE-1/8-1N-SW		12593 VPE-1/8-SW
	7860 PE-1/8-2N	7470 PE-PK-4	12594 VPE-1/8-2N
	7862 PE-1/8-2N-SW	7471 PE-PK-4-SW	12595 VPE-1/8-2N-SW
Medium	Compressed air (filtered, lubricated or unlubricated)		Vacuum

(Ref. 4.410, 4.410r, 4.411, 4.415) (10.87, 10.85)

(Ref. 11.4/20-1, 25-1) (98)

Order Number	10773 PEV-1/4-8	150261 VPEV-1/8
Medium	PEV	Compressed air (filtered, lubricated or unlubricated) and non-corrosive liquid media
	VPEV	Compressed air (filtered, lubricated or unlubricated)
Design	Electro-pneumatic signal converter	
Mounting	2 holes through housing or plate mounted	
Connection	G 1/4 ISO	G 1/8 ISO
Pressure Adjustment Range	15 to 180 psi / 1 to 12 bar	2.32 to 23.2 psi / 0.16 to 1.6 bar (vacuum 5.9 to 29.9 in Hg / -0.2 to 1 bar)
Repetition Accuracy	± 3%	
Max. Switching Frequency	3.3 Hz	
Max. Voltage	250V AC / 125 V DC	
Electrical Load	Resistance	5 A at 250 AC; 0.4A at 125V DC
	Inductive	0.5 at 250 AC; 0.025A at 125V DC
Type of Protection	IP 65 (Din 40050)	
Materials	Housing: Aluminum, Mg, Si	

-4 to 176°F / -20 to +80°C

(Ref. 8.3/20-1, 25-1) (98)