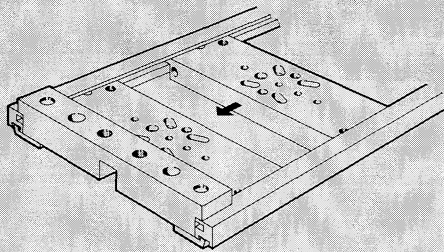


## Mounting Frames

Type NRRQ-...

A maximum of 16 elements with 1n-width or 2n-width sub-bases can be mounted on these mounting frames (M 5-Compact Series). The 18.90 in / 480 mm rack length can accommodate 19 in / 457 mm housings (DIN 41488). The rails may be cut to length to fit other types of mounting. Sub-bases can be inserted into the continuous slots of the mounting rails. The sub-bases are then clamped between cross bars.



The 2n-width cross bars slots permits combining 1n-width and 2n-width components (1n = 1.75 in / 44.45 mm).

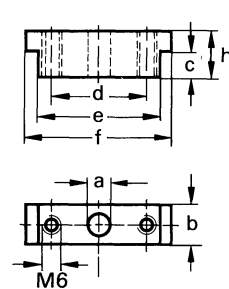
## Identification Labels

To identify hardware, Order No. 6888 Type BZ-NUM-1 to 50 or Order No. 6889 BZ-NUM-51 to 100 labels are inserted into the grooves on the bottom of the mounting rails (see below).

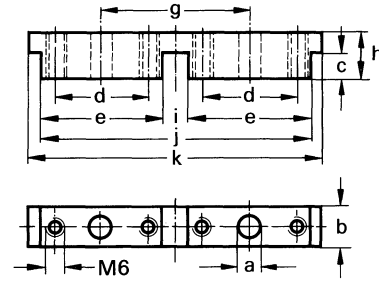
21	22	23
31	32	33
41	42	43



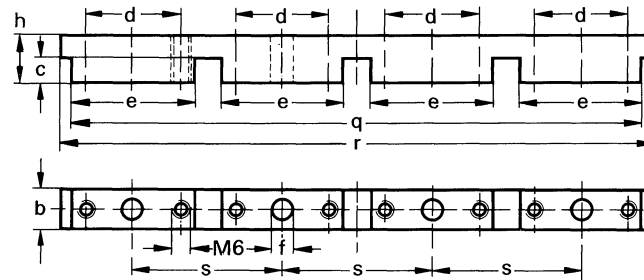
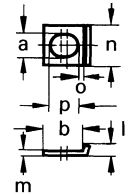
Cross bar, 1n-width  
Type NRV-1N



Cross bar, 2n-width  
Type NRV-2N



Bracket  
Type NRW-12/3



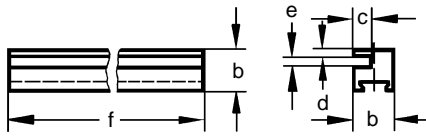
Dimensions		f	1.72 in / 43.7 mm	m	0.06 in / 1.5 mm
a	0.26 in / 6.6 mm	g	1.75 in / 44.5 mm	n	0.46 in / 11.8 mm
b	0.47 in / 12 mm	h	0.55 in / 14 mm	o	0.08 in / 2 mm
c	0.31 in / 7.8 mm	i	0.31 in / 8 mm	p	0.32 in / 8.1 mm
d	1.12 in / 28.5 mm	j	3.19 in / 81 mm	q	6.69 in / 170 mm
e	1.44 in / 36.5 mm	k	3.47 in / 88.2 mm	r	6.97 in / 177 mm
		l	0.12 in / 3 mm	s	1.75 in / 44.45 mm

Order Number		Item (See Page 686)	Materials	Nomenclature	Weight lb / kg
Part No.	Type				
6851	NRV-1N	1	Al, diecast	Cross bar, 1n-width	0.033 / 0.015
6852	NRV-2N	2	Al, diecast	Cross bar, 2n-width	0.070 / 0.032
6771	NRV-4N	-	Al, diecast	Cross bar, 4n-width	0.132 / 0.060
9363	NRQ-8-480	3	Al, anodized	Mounting rail, 18.90 in / 480 mm long	0.132 / 0.060
6772	NRW-12/3	4	Steel, galvanized	Mounting bracket	0.004 / 0.002
207679	NRB-12/60	5	Al	Support rod	0.037 / 0.017
200568	-	6	Steel, galvanized	Socket head capscrew, M6 x 18 DIN 84	0.011 / 0.005
208938	-	7	Steel, galvanized	Socket head capscrew, M6 x 12 DIN 84	0.009 / 0.004
9364	NRRQ-1N	-	-	Mounting rack, 1n-width, assembled, for 16 elements	0.484 / 0.220
9365	NRRQ-2N	-	-	Mounting rack, 2n-width, assembled, for 16 elements	0.693 / 0.315
Accessories for mounting of PK-3 elements					
11571	NRW-9/1.5-B		Plastic	Mounting brackets	0.002 / 0.001
204021			Steel, galvanized	Socket head capscrew, M4 x 12 DIN 84	0.004 / 0.002

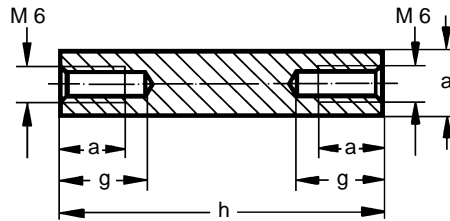
# Compact 2000 / M5/2N System Valves

## Mounting Frames

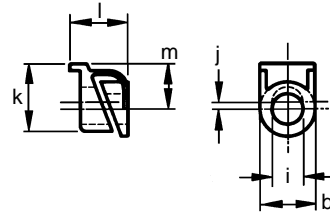
### Mounting Rail Type NRQ-8-480



### Support Rod Type NRB-12/60

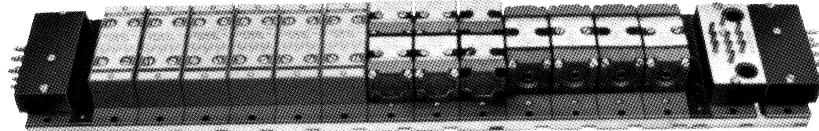


### Bracket Type NRW-9/1.5



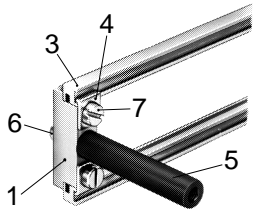
### Dimensions

a 0.47 in / 12 mm	h 2.36 in / 60 mm
b 0.31 in / 8 mm	i 0.18 in / 4.5 mm
c 0.15 in / 3.8 mm	j 0.04 in / 1 mm
d 0.05 in / 1.2 mm	k 0.39 in / 10 mm
e 0.09 in / 2.4 mm	l 0.33 in / 8.4 mm
f 18.9 in / 480 mm	m 0.26 in / 6.7 mm
g 0.63 in / 16 mm	

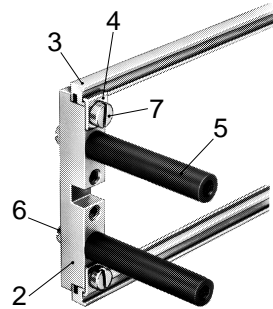


Application Example

### 1n-width mounting frame



### 2n-width mounting frame



### Mounting Rail Type NRQ-8-480

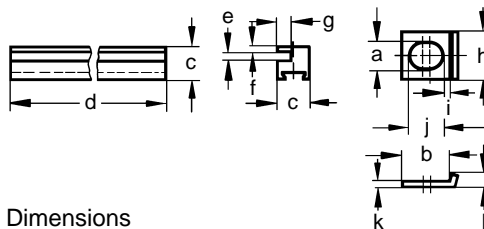
Mounting rails are essential for fastening various pneumatic elements. Two mounting rails are interlocked in corresponding n-grooves. 1n- and 2n-sub-bases may be installed in the continuous slot.

### Mounting Bracket Type NRW-12/3

These brackets attach cross bars, type NRV, to mounting rails.

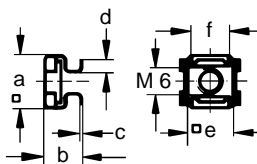
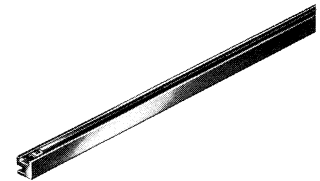
### Box Nut Type NRM-M6

The box nut is inserted or attached in the square holes of the various mounting frame. The thread is M6.



### Dimensions

a 0.26 in / 6.6 mm	g 0.15 in / 3.8 mm
b 0.47 in / 12 mm	h 0.46 in / 11.8 mm
c 0.31 in / 8 mm	i 0.08 in / 2 mm
d 18.9 in / 480 mm	j 0.32 in / 8.1 mm
e 0.09 in / 2.4 mm	k 0.06 in / 1.5 mm
f 0.05 in / 1.2 mm	l 0.12 in / 3 mm



### Dimensions

a 0.51 in / 13 mm	d 0.09 in / 2.4 mm
b 0.28 in / 7 mm	e 0.43 in / 11 mm
c 0.02 in / 0.5 mm	f 0.34 in / 8.7 mm

