

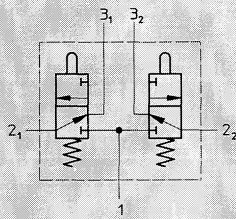
# Manually Actuated Valves for Panel Mounting

# FESTO

3/2 - 3 Way, 2 Position Valves, Directly Actuated, Barbed Fittings for 3/16 in\*\* / 3 mm Tubing

## Basic Valve for Panel Mounting

Type SV-3-PK-3x2



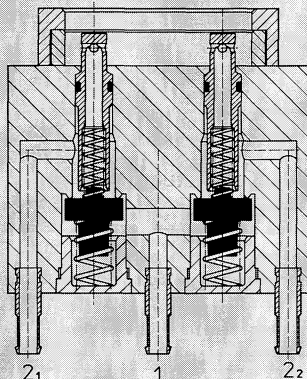
### Actuators:

(Order separately)

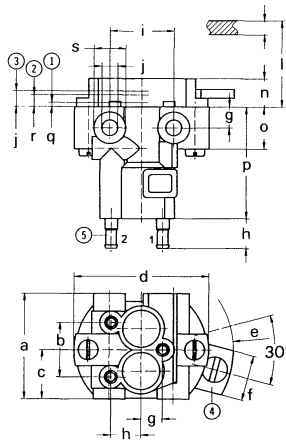
Toggle Actuator  
Type H-22-Sx2



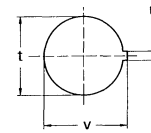
Selector Actuator  
Type NR-22-Sx2



Valve Body  
Type SV-3-PK-3x2

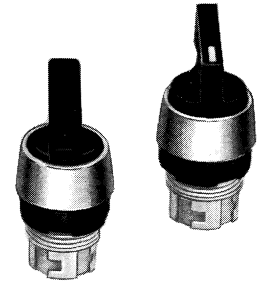
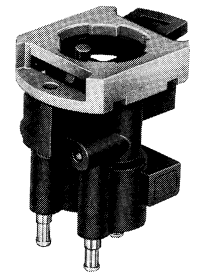


Mounting Hole



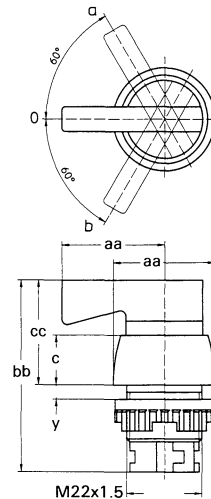
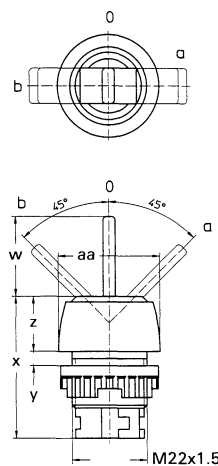
- ① Max. final position
- ② Start position
- ③ Neutral position
- ④ Quick connection for actuators
- ⑤ Barbed fitting for 3/16 in\*\* / 3 mm plastic tubing

1 (P) = Supply  
2 (A) = Outlet  
3 (R) = Exhaust



Actuators  
Type H-22-Sx2

Type NR-22-Sx2



O = Neutral position  
a = Actuation position for output a  
b = Actuation position for output b  
Actuator mounting can be changed to reverse outputs a and b.

### Dimensions

- a 1.18 in / 30 mm
- b 0.61 in / 15.4 mm
- c 0.55 in / 14 mm
- d 1.50 in / 38 mm
- e 1.02 in / 26 mm
- f 0.51 in / 13 mm
- g 0.24 in / 6 mm
- h 0.33 in / 8.5 mm
- i 0.71 in / 18 mm
- j 0.18 in / 4.5 mm
- k 0.96 in / 24.5 mm
- l 0.96 in / 24.5 mm
- m 0.31 in / 8 mm
- n 0.47 in / 12 mm
- o 1.25 in / 31.8 mm
- p 0.05 in / 1.2 mm
- q 0.13 in / 3.4 mm
- r 0.35 in / 9 mm
- s 0.88-0.89 in / 22.3-22.5 mm
- t 0.10-0.11 in / 2.6-2.7 mm
- u 0.925-0.933 in / 23.5-23.7 mm
- v 0.89 in / 22.5 mm
- w 1.57 in / 40 mm
- x 0.04-0.24 in / 1-6 mm
- y 0.61 in / 15.5 mm
- aa 1.14 in / 29 mm
- bb 2.13 in / 54 mm
- cc 1.16 in / 29.5 mm

Order Number	25835 SV-3-PK-3x2	25749 H-22-Sx2	25261 NR-22-Sx2
Medium	Compressed air (filtered, lubricated, or unlubricated)		
Mounting	Front panel installation (7/8 in / 22.5 mm connection), or thru-holes		
Connection	Barbed fittings for 3/16 in** / 3 mm plastic tubing		
Orifice Size	0.10 in / 2.5 mm		
C <sub>v</sub> Factor	0.072 C <sub>v</sub> / 72 l/min		
Pressure Range	0 to 120 psi / 0 to 8 bar		
Operating Force at 90 psi / 6 bar supply*	5.17 lbf / 23 N	0.004 lbf / 20 Ncm	0.079 lbf / 35 Ncm
Design	Poppet valve, directly actuated, spring return		
Material	Housing: Plastic; Valve stem: Brass; Seals: Buna N		
Weight	0.057 lb / 0.026 kg	0.042 lb / 0.019 kg	0.049 lb / 0.022 kg

\* 14 to 140° F / -10 to +60° C

\*\* Approximate equivalent.