

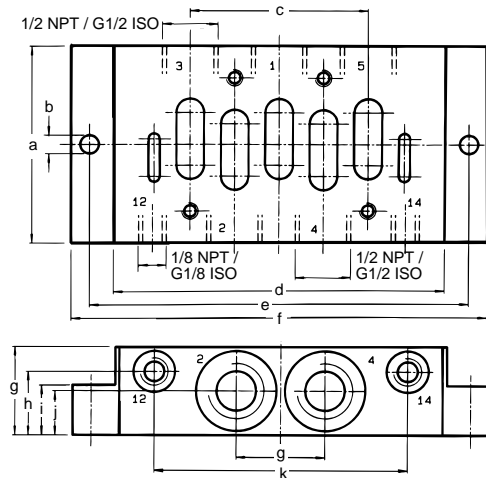
Single Sub-bases

With Mounting Pattern to ISO 5599/I Table 3, Size 3 and External Dimensions to VDMA 24345.

Single sub-base
Side ported

Type NAS-1/2-3A-ISO
NAS-1/2-NPT-3A

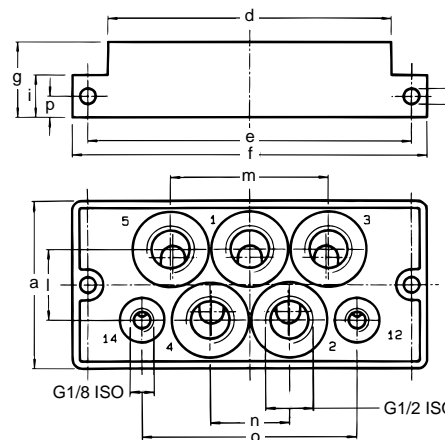
Type NAS-1/2-3A-ISO
NAS-1/2-NPT-3A



Single sub-base
Bottom ported

Type NAU-1/2-3B-ISO

Type NAU-1/2-3B-ISO



- 1 (P) = Supply port
- 4, 2 (A, B) = Working or outlet ports
- 5, 3 (R, S) = Exhaust ports
- 12, 14 (Y, Z) = Pilot ports

Dimensions

- a 2.80 in / 71 mm
- b 0.26 in / 6.6 mm
- c 2.52 in / 64 mm
- d 4.69 in / 119 mm
- e 5.35 in / 136 mm
- f 5.87 in / 149 mm
- g 1.26 in / 32 mm
- h 0.91 in / 23 mm
- i 0.71 in / 18 mm
- j 0.63 in / 16 mm
- k 3.58 in / 91 mm
- l 1.18 in / 30 mm
- m 2.60 in / 66 mm
- n 1.30 in / 33 mm
- o 3.54 in / 90 mm
- p 0.35 in / 9 mm

Order Number	Metric	10336 NAS-1/2-3A-ISO	10337 NAU-1/2-3B-ISO
Part No./Type	NPT	13995 NAS-1/2 NPT-3A	—
Mounting		2 through-holes in housing	
Connection	Working Ports	G 1/2 ISO / 1/2 NPT	G 1/2 ISO
	Pilot Ports	G 1/8 ISO / 1/8 NPT	G 1/8 ISO
Materials		Diecast Al, anodized	
Weight		0.794 lb / 0.360 kg	1.445 lb / 0.660 kg