

# Membrane Air Dryers MS6-LDM1 – Metric Series



Membrane air dryers remove water vapor from the compressed air and lower the dew point preventing moisture from forming downstream. Pre-filtration with a grade of 0.01 micron is required.

- Pneumatic connection: G<sup>1</sup>/<sub>4</sub>, G<sup>3</sup>/<sub>8</sub>, G<sup>1</sup>/<sub>2</sub>, G<sup>3</sup>/<sub>4</sub>
- Pressure dew point reduction: 20 K
- Supply pressure: 3 ... 12.5 bar
- Flow rate: 200 ... 400 l/min

Product Range Overview						
Type	Flow rate [l/min]	Pneumatic connections		Bowl guard		Reverse flow
		Body thread	Port plate	Plastic bowl guard	Metal bowl	Flow direction from right to left
MS6			AG...	R	U	Z
LDM1	200 ... 400	G <sup>1</sup> / <sub>4</sub> , G <sup>3</sup> / <sub>8</sub> , G <sup>1</sup> / <sub>2</sub>	G <sup>1</sup> / <sub>4</sub> , G <sup>3</sup> / <sub>8</sub> , G <sup>1</sup> / <sub>2</sub> , G <sup>3</sup> / <sub>4</sub>	–	■	■

## Features

- Optimum final dryer with excellent operational reliability
- Suitable for use as an individual unit or for integration in existing service unit combinations
- Flow rate-dependent dew point reduction
- Wear-free function requiring no external energy
- 15% purge air flow rate
- Optional purge ring for ducting of purging air

- Typical areas of application:
- Drying, cleaning of precision parts
  - Measuring technology
  - Rinsing of precision glass scales
  - Painting systems
  - Paper and packaging machines

## Contents

- Technical Data → 866
  - Dimensional Drawings → 869
  - Ordering Data → 869
  - Accessories → 871
- [www.festo.com/catalog/ms6-ldm](http://www.festo.com/catalog/ms6-ldm)

# Membrane Air Dryers MS6-LDM1 – Metric Series

FESTO

Technical Data

ISO Symbol



**Note**

Prefiltration of the compressed air using a micro filter MS-LFM-A, filtration grade 0.01 μm (residual particles < 0.1 μm, residual oil content < 0.1 mg/m<sup>3</sup>) is vital for flawless functioning of the unit.

General Technical Data			
Pneumatic connection 1, 2	G1/4	G3/8	G1/2
Pressure dew point reduction [K]	20		
Supply pressure [bar]	3 ... 12.5		

Note: This product conforms with the ISO 1179-1 standard and the ISO 228-1 standard.

Standard Flow Rate q <sub>n</sub> <sup>1)</sup> [l/min]			
	Cartridge P20	Cartridge P30	Cartridge P40
Input q <sub>n In</sub>	235	353	471
Output q <sub>n Out</sub>	200	300	400
Purge air q <sub>n Purge</sub>	35.3	52.9	70.6

1) Measured at p<sub>1</sub> = 6.9 bar, θ<sub>pd In</sub> = 25 °C, θ<sub>pd Out</sub> = 5 °C ± 1.5 °C (θ<sub>pA Out</sub> = -21.5 °C ± 1.2 °C), θ<sub>amb</sub> = 25 °C

Operating and Environmental Conditions	
Operating medium	Compressed air, air quality class 1.7.2 to DIN ISO 8573-1
Ambient temperature [°C]	+2 ... +50
Temperature of medium [°C]	+2 ... +50
Storage temperature [°C]	-20 ... +60
Assembly position	Vertical ±5°
Corrosion resistance class CRC <sup>2)</sup>	2

2) Corrosion resistance class 2 according to Festo standard 940 070  
Components requiring moderate corrosion resistance. Externally visible parts with primarily decorative surface requirements which are in direct contact with a normal industrial environment or media such as coolants or lubricating agents.

Weights [g]			
	Cartridge P20	Cartridge P30	Cartridge P40
Membrane air dryer	1,050	1,200	1,300

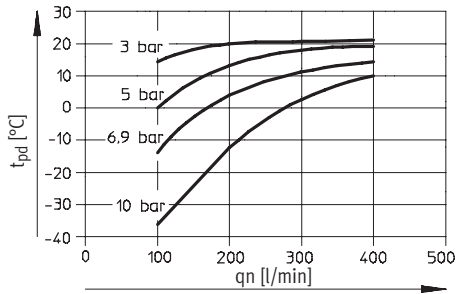
• For spare parts go to: [www.festo.com/en/spare\\_parts\\_service](http://www.festo.com/en/spare_parts_service)

# Membrane Air Dryers MS6-LDM1 – Metric Series

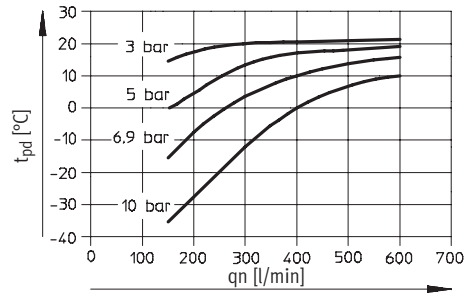
Technical Data

## Pressure Dew Point $t_{pd}$ (Output) as a Function of the Standard Flow Rate at Output $q_n$

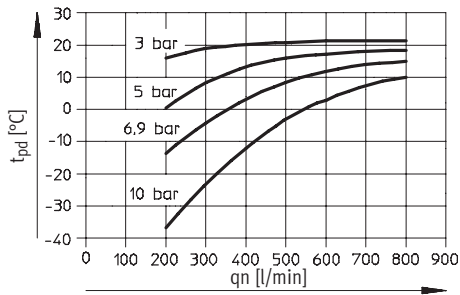
MS6-LDM1-...-P20



MS6-LDM1-...-P30

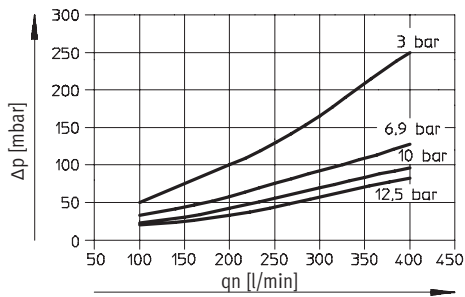


MS6-LDM1-...-P40

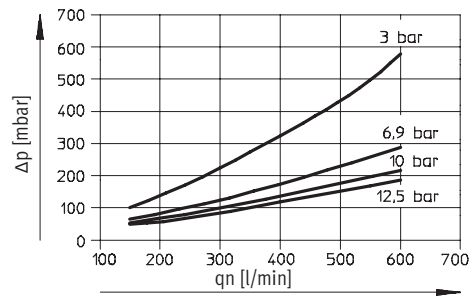


## Differential Pressure $\Delta p$ as a Function of the Standard Flow Rate at Output $q_n$

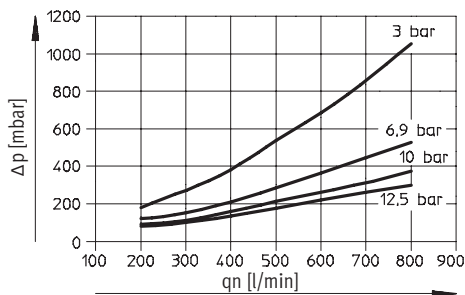
MS6-LDM1-...-P20



MS6-LDM1-...-P30



MS6-LDM1-...-P40

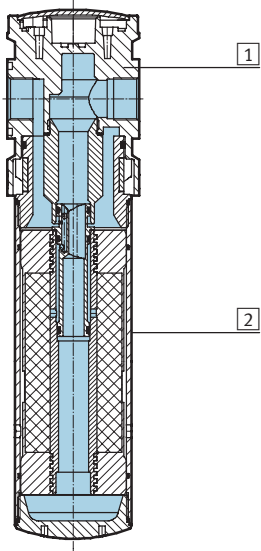


# Membrane Air Dryers MS6-LDM1 – Metric Series

Technical Data

## Materials

Sectional view



Membrane air dryer		
1	Housing	Die-cast aluminum
2	Bowl	Wrought aluminum alloy
-	Seals	Nitrile rubber

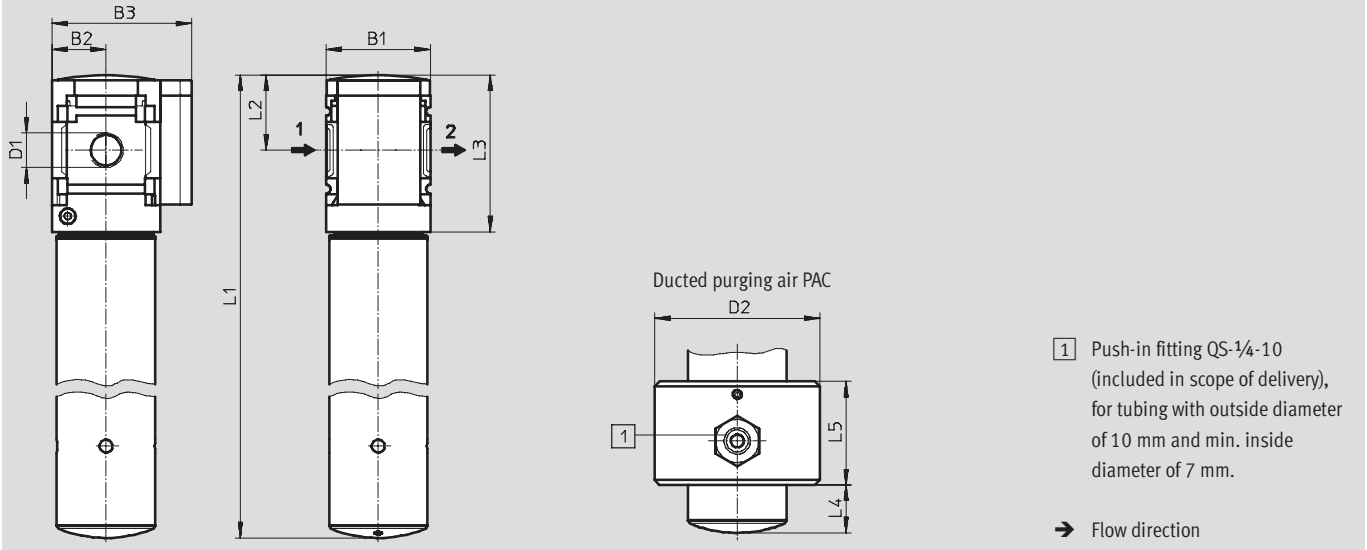
# Membrane Air Dryers MS6-LDM1 – Metric Series

Dimensional Drawings, Ordering Data – Pre-configured Products



## Dimensions<sup>1)</sup>

Download CAD Data → [www.festo.com/us/cad](http://www.festo.com/us/cad)



1) Push-in fitting QS-1/4-10 (included in scope of delivery), for tubing with outside diameter of 10 mm and min. inside diameter of 7 mm.

→ Flow direction

Type	B1	B2	B3	D1	D2	L1	L2	L3	L4	L5
MS6-LDM1-1/4-P20	62	31	76	G1/4	80	345	42	87	34	40
MS6-LDM1-1/4-P30						415				
MS6-LDM1-1/4-P40						475				
MS6-LDM1-3/8-P20	62	31	76	G3/8	80	345	42	87	34	40
MS6-LDM1-3/8-P30						415				
MS6-LDM1-3/8-P40						475				
MS6-LDM1-1/2-P20	62	31	76	G1/2	80	345	42	87	34	40
MS6-LDM1-1/2-P30						415				
MS6-LDM1-1/2-P40						475				

1) Dimensions are in millimeters, unless otherwise noted.

Note: This product conforms with the ISO 1179-1 standard and the ISO 228-1 standard.

Ordering Data				
Flow cartridge	Connection	Part No.	Type	LT
P20	G1/4	543640	MS6-LDM1-1/4-P20	Q
	G3/8	543642	MS6-LDM1-3/8-P20	Q
	G1/2	543644	MS6-LDM1-1/2-P20	Q
P40	G1/4	543646	MS6-LDM1-1/4-P40	Q
	G3/8	543648	MS6-LDM1-3/8-P40	Q
	G1/2	543650	MS6-LDM1-1/2-P40	Q

LT = Lead time

1D typically ships same day/next day

1W typically ships within 1 week

Q request a quote for lead time

# Membrane Air Dryers MS6-LDM1 – Metric Series



Ordering Data – Configurable Products

M Mandatory Data						O Options		
Part No.	Series	Size	Function	Connection size	Flow cartridge	Purging air	Type of mounting	Reverse flow direction
543638	MS	6	LDM1	1/4, 3/8, 1/2, AGB, AGC, AGD, AGE	P20 P30 P40	PAC	WP WPM WB	Z
<b>Order example</b>								
<b>543638</b>	<b>MS</b>	<b>6</b>	<b>- LDM1</b>	<b>- AGC</b>	<b>- P20</b>	<b>-</b>	<b>- WP</b>	<b>-</b>

Ordering Table		Grid dimension [mm]	62	Conditions	Code	Enter code
M	Part No.	<b>543638</b>				
	Series	Standard			<b>MS</b>	MS
	Size	6			<b>6</b>	6
	Function	Membrane dryer			<b>-LDM1</b>	-LDM1
	Connection size	Body thread G1/4			-1/4	
		Body thread G3/8			-3/8	
		Body thread G1/2			-1/2	
		Port plate G1/4 (dimensions → 875)			-AGB	
		Port plate G3/8 (dimensions → 875)			-AGC	
		Port plate G1/2 (dimensions → 875)			-AGD	
		Port plate G3/4 (dimensions → 875)			-AGE	
	Flow cartridge	200 l/min			-P20	
		300 l/min			-P30	
		400 l/min			-P40	
O	Purging air	Ducted purging air			-PAC	
	Type of mounting	Mounting bracket (dimensions → 876)		1	-WP	
		Mounting bracket (dimensions → 876)		1	-WPM	
		Mounting bracket (dimensions → 873)			-WB	
	Reverse flow direction	Flow direction from right to left			-Z	

1 WP, WPM Only with port plate AGB, AGC, AGD or AGE

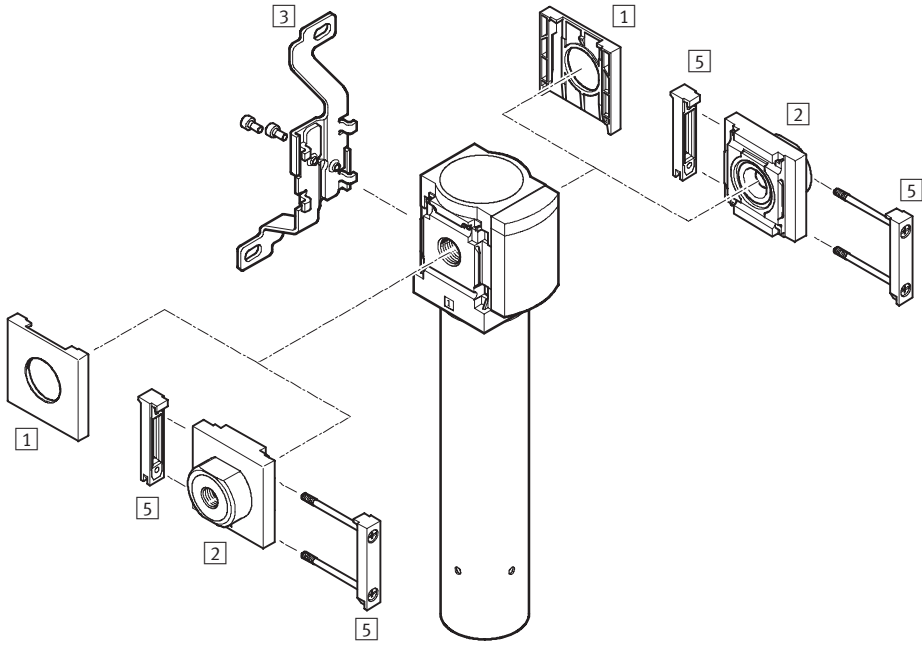
Transfer order code

<b>543638</b>	<b>MS</b>	<b>6</b>	<b>- LDM1</b>	<b>-</b>	<b>-</b>	<b>-</b>	<b>-</b>	<b>-</b>
---------------	-----------	----------	---------------	----------	----------	----------	----------	----------

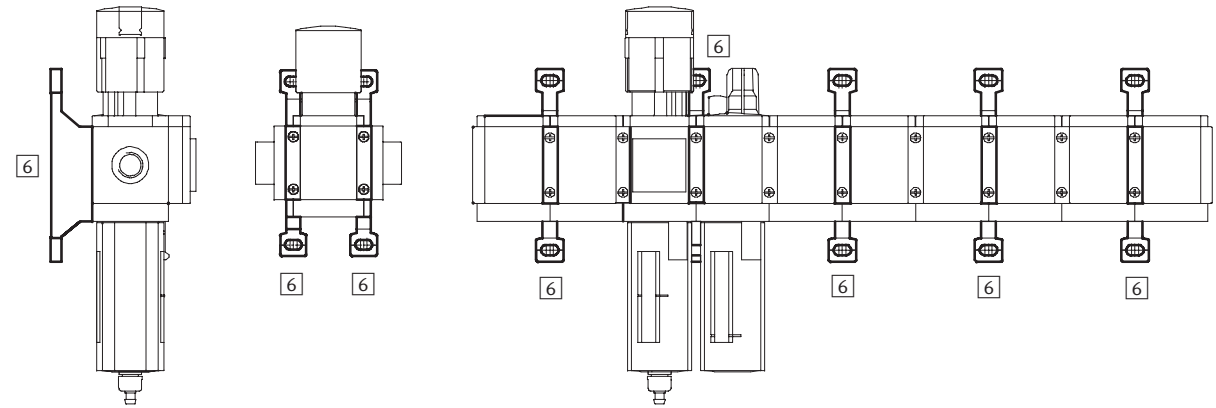
# Membrane Air Dryers MS6-LDM1 – Metric Series

Accessories Overview

## Mounting Attachments and Accessories



Single unit and combination unit mounting brackets.



# Membrane Air Dryers MS6-LDM1 – Metric Series

Accessories Overview

Mounting Attachments and Accessories						
		Single unit		Combination unit → 3.1-1		→ Page
		without port plate	with port plate	without port plate	with port plate	
1	Cover cap MS6-END	■	-	■	-	874
2	Port plate MS6-AG...	-	■	-	■	875
3	Mounting bracket MS6-WB	■	■	-	-	873
5	Body connector MS6-MV	-	■	■	■	875
6	Mounting bracket MS6-WP/WPB/WPM	-	■	■	■	876



# Membrane Air Dryers MS6-LDM1 – Metric Series



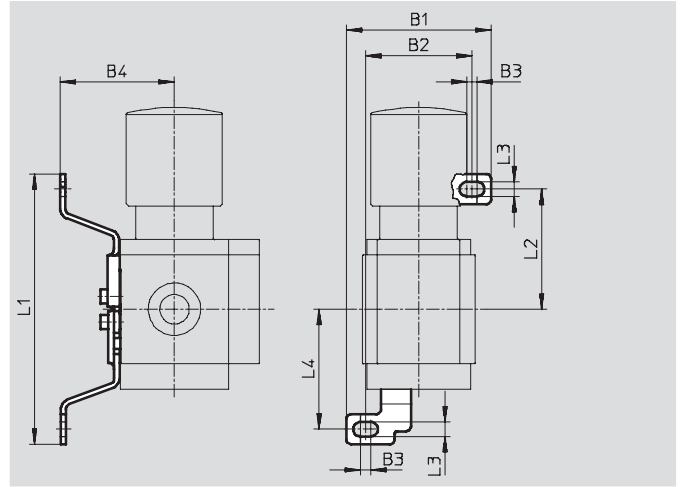
Accessories

## 3 Mounting bracket MS6-WB

- For wall mounting

Material:

Steel



Dimensions and Ordering Data										
B1	B2	B3	B4	L1	L2	L3	L4	Weight [g]	Part No.	Type
79.4	61.9	4.5	55	157.6	71	6.6	71	121	532196	MS6-WB

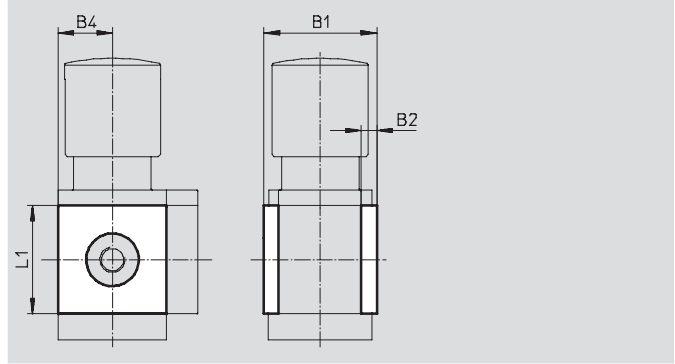
# Membrane Air Dryers MS6-LDM1 – Metric Series

Accessories

## 1 Cover cap MS6-END

- Can be used to cover the body sides of the first and last module if port plates are not used.

Material:  
Reinforced polyamide  
Free of copper and PTFE



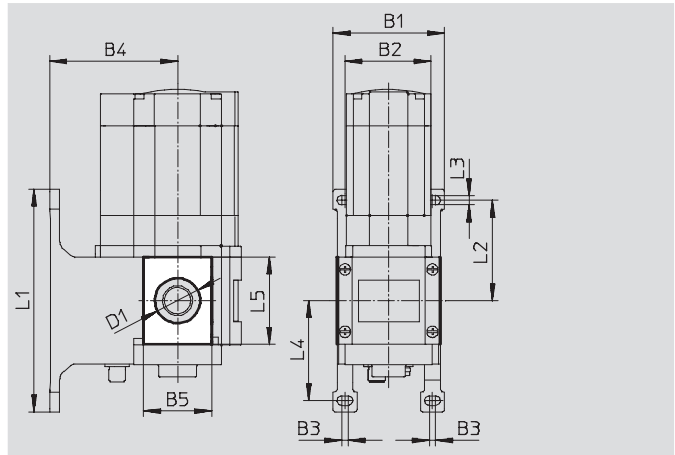
Dimensions and Ordering Data						
B1	B2	B4	L1	Part No.	Type	
67	8	31	62	538780	MS6-END	

## Mounting plate MS6-AEND

(order code: WBE; scope of delivery includes mounting bracket MS6-WPB)

- In combination with mounting bracket MS-WP or MS-WPB for mounting an individual unit on a wall with body thread

Material:  
Reinforced polyamide  
Conforms to RoHS  
Free of copper and PTFE



Dimensions and Ordering Data															
B1	B2	B3	B4		B5	D1 ∅	L1	L2	L3	L4	L5	CRC <sup>1)</sup>	Weight [g]	Part No.	Type
			WP	WPB											
79	62	4.5	54	90.5	48.4	32	158	71	6.6	71	62	2	17	535408	MS6-AEND

1) Corrosion resistance class 2 according to Festo standard 940 070  
Components requiring moderate corrosion resistance. Externally visible parts with primarily decorative surface requirements which are in direct contact with a normal industrial environment or media such as coolants or lubricating agents.

## Membrane Air Dryers MS6-LDM1 – Metric Series

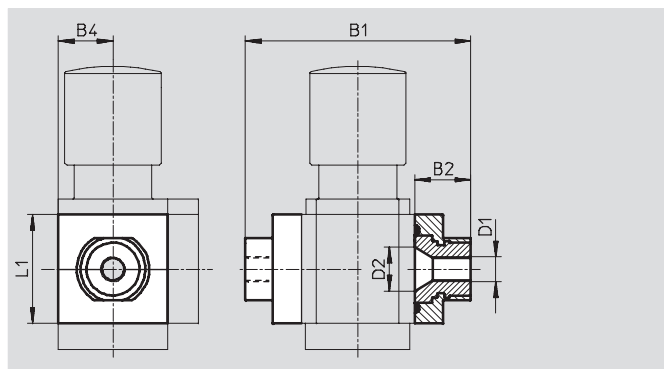
FESTO

Accessories

### 2 Port plate MS6-AG...

- Adapter for pneumatic connection

Material:  
Aluminum



Dimensions and Ordering Data								
B1	B2	B4	D1	D2	L1	Weight [g]	Part No.	Type
115	26.5	31	G $\frac{1}{4}$	24	62	300	526080	MS6-AGB
			G $\frac{3}{8}$				526081	MS6-AGC
			G $\frac{1}{2}$				526082	MS6-AGD
			G $\frac{3}{4}$				526083	MS6-AGE

### 5 Body connector MS...-MV

- For connecting modules

Material:  
Stainless steel/polyacetate



Ordering Data		
Weight [g]	Part No.	Type
54	532799	MS6-MV

# Membrane Air Dryers MS6-LDM1 – Metric Series

Accessories

## 6 Mounting Bracket MS6-WP...

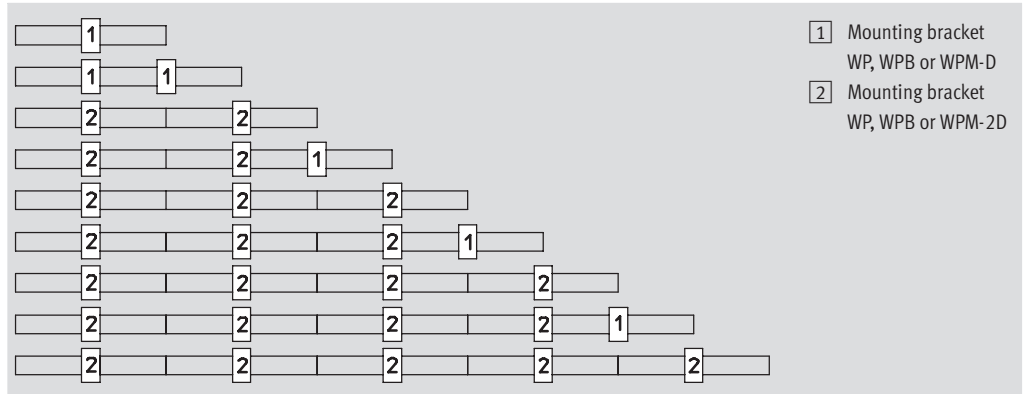
Suggested placement of wall mounting brackets when mounting air preparation combinations

1 unit: 62 mm with WP, WPB  
69 mm with WPM-D

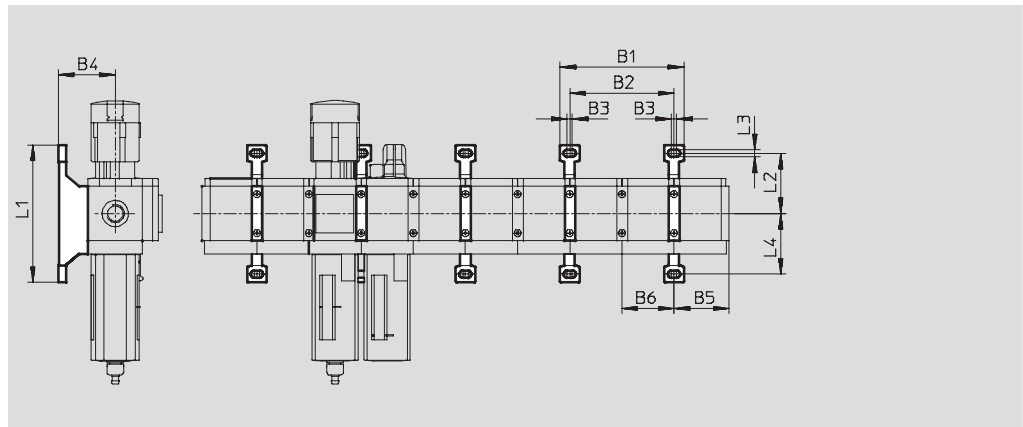
2 units: 124 mm with WP, WPB  
138 mm with WPM-2D

Number of units

1 2 3 4 5 6 7 8 9 10



## Mounting dimensions



Type	B1	B2	B3	B4	B5	B6	L1	L2	L3	L4
MS6-WP	141	124	4.5	54	64.5	62	158	71	6.6	71
MS6-WPB				90.5						41.3
MS6-WPM-...D	168	138	17.5	54	65.5	69	98.6	41.3		41.3

# Membrane Air Dryers MS6-LDM1 – Metric Series

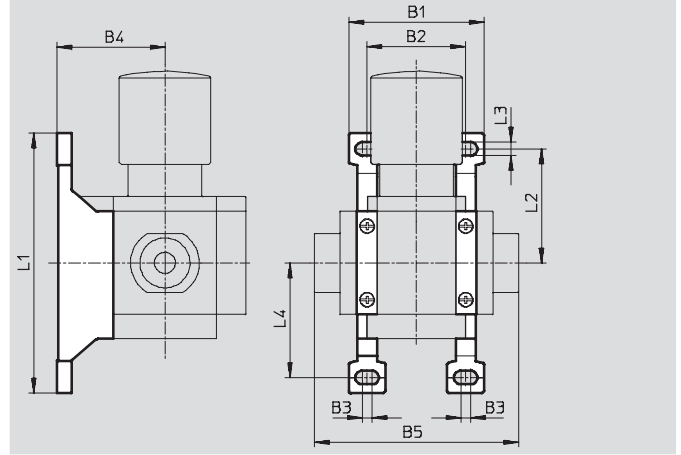


Accessories

## Mounting bracket MS6-WP

- To connect the modules for wall mounting
- In combination with a port plate MS-AG... for mounting an individual unit on a wall
- In combination with mounting plate MS-AEND or for mounting an individual unit with body thread on a wall
- For pressure regulator LRB with angled outlet block B... at rear

Material:  
Die-cast aluminum

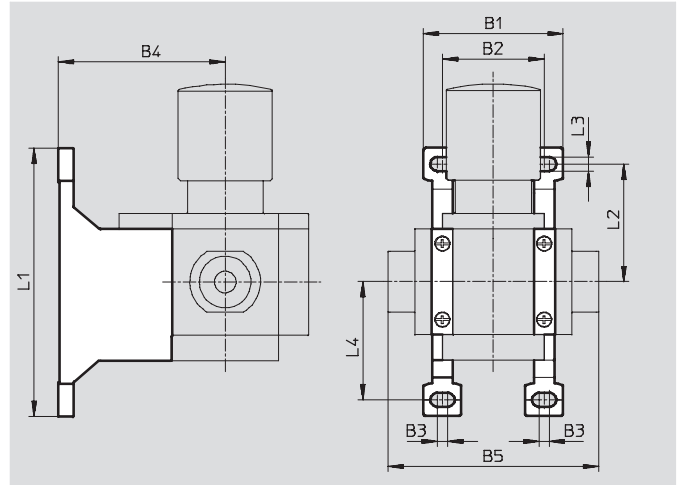


Dimensions and Ordering Data											
B1	B2	B3	B4	B5	L1	L2	L3	L4	Weight [g]	Part No.	Type
79	62	4.5	54	115	158	71	6.6	71	76	532195	MS6-WP

## Mounting bracket MS6-WPB

- To connect the modules for wall mounting
- In combination with a port plate MS-AG... for mounting an individual unit on a wall
- In combination with mounting plate MS-AEND or for mounting an individual unit with direct thread on a wall
- Provides large wall gap for pressure regulator

Material:  
Die-cast aluminum



Dimensions and Ordering Data											
B1	B2	B3	B4	B5	L1	L2	L3	L4	Weight [g]	Part No.	Type
79	62	4.5	90.5	115	158	71	6.6	71	115	526074	MS6-WPB

# Membrane Air Dryers MS6-LDM1 – Metric Series

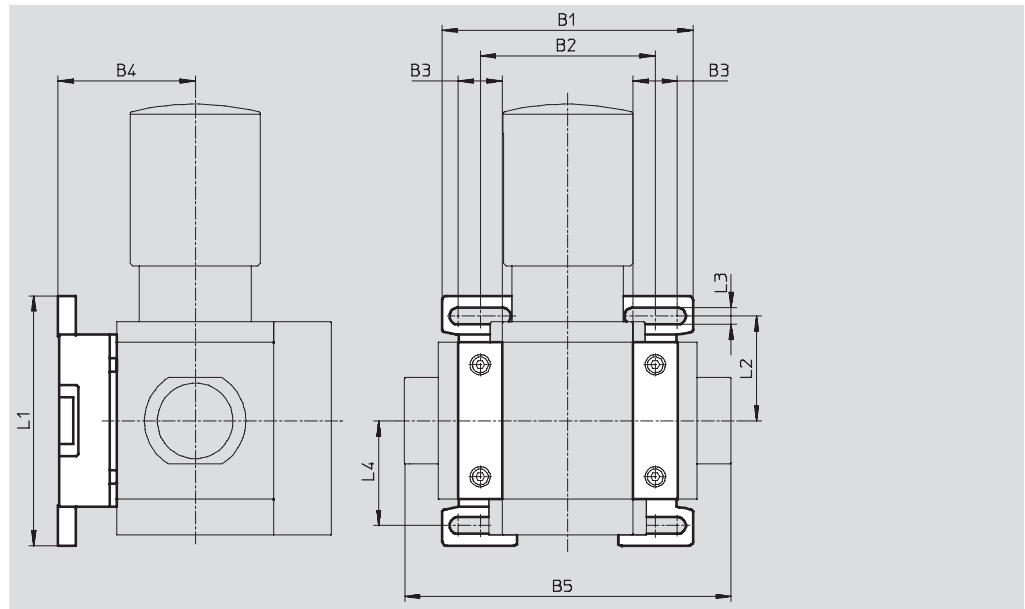
Accessories

## Mounting bracket MS6-WPM

- To connect the modules for wall mounting
- In combination with a port plate MS-AG... for mounting an individual unit on a wall
- Speedy attachment and detachment
- For installation of modules with regulating knob pointing downwards

The distance piece D or 2D (designated in the type code) is included in the scope of delivery and ensures the correct clearance

Material:  
Die-cast aluminum



Dimensions and Ordering Data												
B1	B2	B3	B4	B5	L1	L2	L3	L4	Clearance	Weight [g]	Part No.	Type
99	69	17.5	54	129	98.6	41.3	6.6	41.3	62	144	526073	MS6-WPM-D
168	138			198					124	154	532186	MS6-WPM-2D

## Body connector MS6-MVM

- For installation of modules with regulating knob pointing downwards

Material:  
Die-cast aluminum



Ordering Data			
Size	Part No.	Type	
MS6	532801	MS6-MVM	

# Membrane Air Dryers MS6N-LDM1 – Inch Series



Membrane air dryers remove water vapor from the compressed air and lower the dew point preventing moisture from forming downstream. Pre-filtration with a grade of 0.01 micron is required.

- Pneumatic connection: 1/4 NPT, 3/8 NPT, 1/2 NPT, 3/4 NPT
- Pressure dew point reduction: 20 K
- Supply pressure: 44 ... 184 psi
- Flow rate: 7.1 ... 14.1 scfm

Product Range Overview						
Type	Flow rate [scfm]	Pneumatic connections		Bowl guard		Reverse flow
		Body thread	Port plate	Plastic bowl guard	Metal bowl	Flow direction from right to left
<b>MS6N</b>			<b>AG...</b>	<b>R</b>	<b>U</b>	<b>Z</b>
LDM1	7.1 ... 14.1	1/4 NPT, 3/8 NPT, 1/2 NPT	1/4 NPT, 3/8 NPT, 1/2 NPT, 3/4 NPT	-	■	■

## Features

- Optimum final dryer with excellent operational reliability
- Suitable for use as an individual unit or for integration in existing service unit combinations
- Flow rate-dependent dew point reduction
- Wear-free function requiring no external energy
- 15% purge air flow rate
- Optional purge ring for ducting of purging air

- Typical areas of application:
- Drying, cleaning of precision parts
  - Measuring technology
  - Rinsing of precision glass scales
  - Painting systems
  - Paper and packaging machines

## Contents

- Technical Data → 880
  - Dimensional Drawings → 883
  - Ordering Data → 883
  - Accessories → 885
- [www.festo.com/catalog/ms6n-ldm](http://www.festo.com/catalog/ms6n-ldm)

# Membrane Air Dryers MS6N-LDM1 – Inch Series

Technical Data

ISO Symbol



**Note**

Prefiltration of the compressed air using a micro filter MS-LFM-A, filtration grade 0.01 μm (residual particles < 0.1 μm, residual oil content < 0.1 mg/m<sup>3</sup>) is vital for flawless functioning of the unit.

General Technical Data			
Pneumatic connection 1, 2	1/4 NPT	3/8 NPT	1/2 NPT
Pressure dew point reduction [°F]	68		
Supply pressure [psi]	44 ... 184		

Standard Flow Rate q <sub>n</sub> <sup>1)</sup> [scfm]			
	Cartridge P20	Cartridge P30	Cartridge P40
Input q <sub>n</sub> In	8.3	12.5	16.6
Output q <sub>n</sub> Out	7.1	10.6	14.1
Purge air q <sub>n</sub> Purge	1.2	1.9	2.5

1) Measured at p<sub>1</sub> = 102 psi, θ<sub>pd In</sub> = 77 °F, θ<sub>pd Out</sub> = 41 °F ± 3 °F (θ<sub>pA Out</sub> = -7 °F ± 2 °F), θ<sub>amb</sub> = 77 °F

Operating and Environmental Conditions	
Operating medium	Compressed air, air quality class 1.7.2 to DIN ISO 8573-1
Ambient temperature [°F]	36 ... 122
Temperature of medium [°F]	36 ... 122
Storage temperature [°F]	-4 ... 140
Assembly position	Vertical ±5°
Corrosion resistance class CRC <sup>2)</sup>	2

2) Corrosion resistance class 2 according to Festo standard 940 070  
Components requiring moderate corrosion resistance. Externally visible parts with primarily decorative surface requirements which are in direct contact with a normal industrial environment or media such as coolants or lubricating agents.

Weights [lb]			
	Cartridge P20	Cartridge P30	Cartridge P40
Membrane air dryer	2.10	2.40	2.60

- For spare parts go to: [www.festo.com/en/spare\\_parts\\_service](http://www.festo.com/en/spare_parts_service)



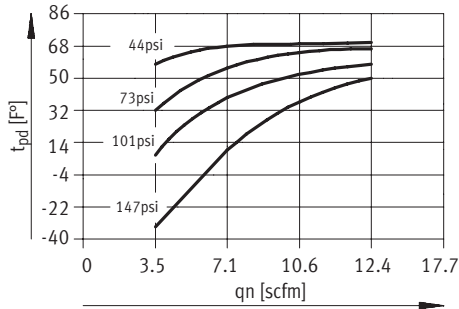
# Membrane Air Dryers MS6N-LDM1 – Inch Series

Technical Data

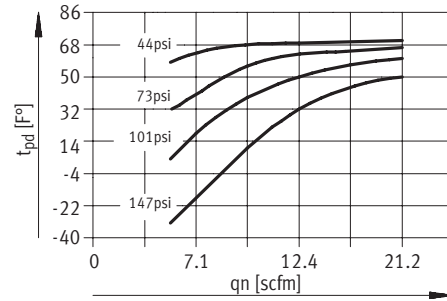


## Pressure Dew Point $t_{pd}$ (Output) as a Function of the Standard Flow Rate at Output $q_n$

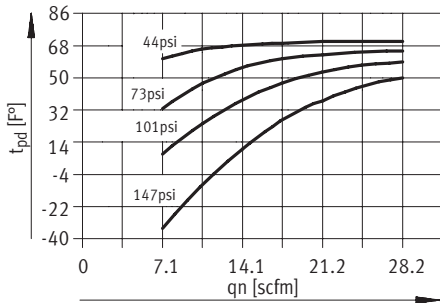
MS6N-LDM1-...-P20



MS6N-LDM1-...-P30

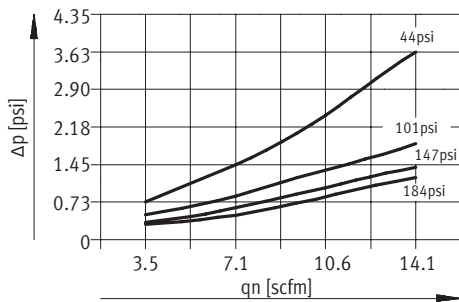


MS6N-LDM1-...-P40

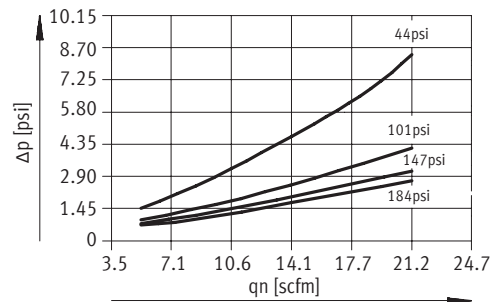


## Differential Pressure $\Delta p$ as a Function of the Standard Flow Rate at Output $q_n$

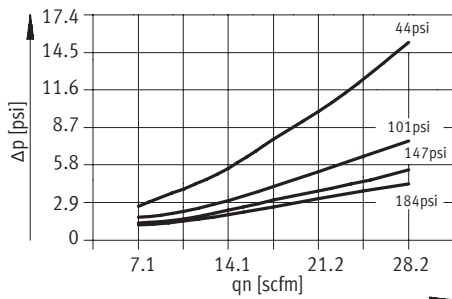
MS6N-LDM1-...-P20



MS6N-LDM1-...-P30



MS6N-LDM1-...-P40

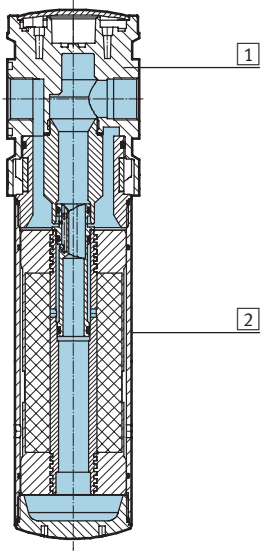


# Membrane Air Dryers MS6N-LDM1 – Inch Series

Technical Data

## Materials

Sectional view



Membrane air dryer		
1	Housing	Die-cast aluminum
2	Bowl	Wrought aluminum alloy
-	Seals	Nitrile rubber

# Membrane Air Dryers MS6N-LDM1 – Inch Series



Dimensional Drawings, Ordering Data – Pre-configured Products

**Dimensions<sup>1)</sup>** Download CAD Data → [www.festo.com/us/cad](http://www.festo.com/us/cad)

**1** Push-in fitting QS-1/4-10 (included in scope of delivery), for tubing with outside diameter of 0.39 in and min. inside diameter of 0.28 in.

→ Flow direction

Type	B1	B2	B3	D1	D2	L1	L2	L3	L4	L5
MS6N-LDM1-1/4-P20	2.44	1.22	2.99	1/4 NPT	3.15	13.58	1.65	3.43	1.34	1.57
MS6N-LDM1-1/4-P30						16.34				
MS6N-LDM1-1/4-P40						18.70				
MS6N-LDM1-3/8-P20	2.44	1.22	2.99	3/8 NPT	3.15	13.58	1.65	3.43	1.34	1.57
MS6N-LDM1-3/8-P30						16.34				
MS6N-LDM1-3/8-P40						18.70				
MS6N-LDM1-1/2-P20	2.44	1.22	2.99	1/2 NPT	3.15	13.58	1.65	3.43	1.34	1.57
MS6N-LDM1-1/2-P30						16.34				
MS6N-LDM1-1/2-P40						18.70				

1) Dimensions are in inches, unless otherwise noted.

Ordering Data					
Flow cartridge	Connection	Part No.	Type		LT
P20	1/4 NPT	543652	MS6N-LDM1-1/4-P20		Q
	3/8 NPT	543654	MS6N-LDM1-3/8-P20		Q
	1/2 NPT	543656	MS6N-LDM1-1/2-P20		Q
P40	1/4 NPT	543658	MS6N-LDM1-1/4-P40		Q
	3/8 NPT	543660	MS6N-LDM1-3/8-P40		Q
	1/2 NPT	543662	MS6N-LDM1-1/2-P40		Q

LT = Lead time      1D typically ships same day/next day      1W typically ships within 1 week      Q request a quote for lead time

# Membrane Air Dryers MS6N-LDM1 – Inch Series



Ordering Data – Configurable Products

M Mandatory Data						O Options			
Part No.	Series	Size	Thread	Function	Connection size	Flow cartridge	Purging air	Type of mounting	Reverse flow direction
543639	MS	6	N	LDM1	1/4, 3/8, 1/2, AQN, AQP, AQR, AQS	P20 P30 P40	PAC	WP WPM WB	Z
<b>Order example</b>									
<b>543639</b>	<b>MS</b>	<b>6</b>	<b>N</b>	<b>- LDM1</b>	<b>- AQP</b>	<b>- P20</b>	<b>-</b>	<b>- WP</b>	<b>-</b>

Ordering Table		Grid dimension [mm]	62	Conditions	Code	Enter code
M	Part No.	543639				
	Series	Standard			MS	MS
	Size	6			6	6
	Thread	NPT thread			N	N
	Function	Membrane dryer			-LDM1	-LDM1
	Connection size	Body thread 1/4 NPT			-1/4	
		Body thread 3/8 NPT			-3/8	
		Body thread 1/2 NPT			-1/2	
		Port plate 1/4 NPT (dimensions → 889)			-AQN	
		Port plate 3/8 NPT (dimensions → 889)			-AQP	
		Port plate 1/2 NPT (dimensions → 889)			-AQR	
	Flow cartridge	7.1 scfm			-P20	
		10.6 scfm			-P30	
		14.1 scfm			-P40	
		Ducted purging air			-PAC	
	Type of mounting	Mounting bracket (dimensions → 890)		1	-WP	
		Mounting bracket (dimensions → 890)		1	-WPM	
		Mounting bracket (dimensions → 887)			-WB	
	Reverse flow direction	Flow direction from right to left			-Z	

1 WP, WPM Only with port plate AQN, AQP, AQR or AQS

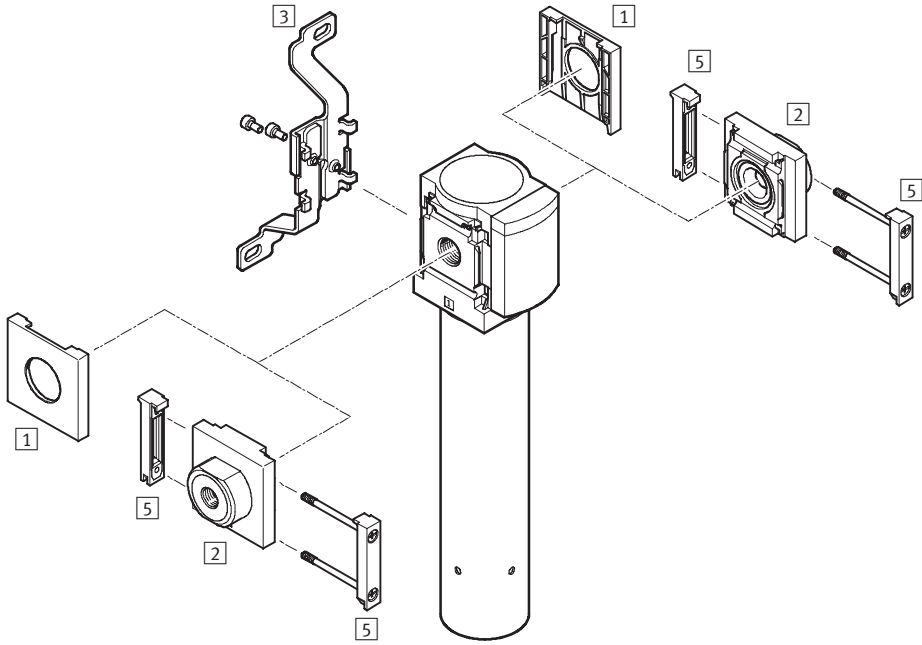
Transfer order code

543639	MS	6	N	-	LDM1	-		-		-		-	
--------	----	---	---	---	------	---	--	---	--	---	--	---	--

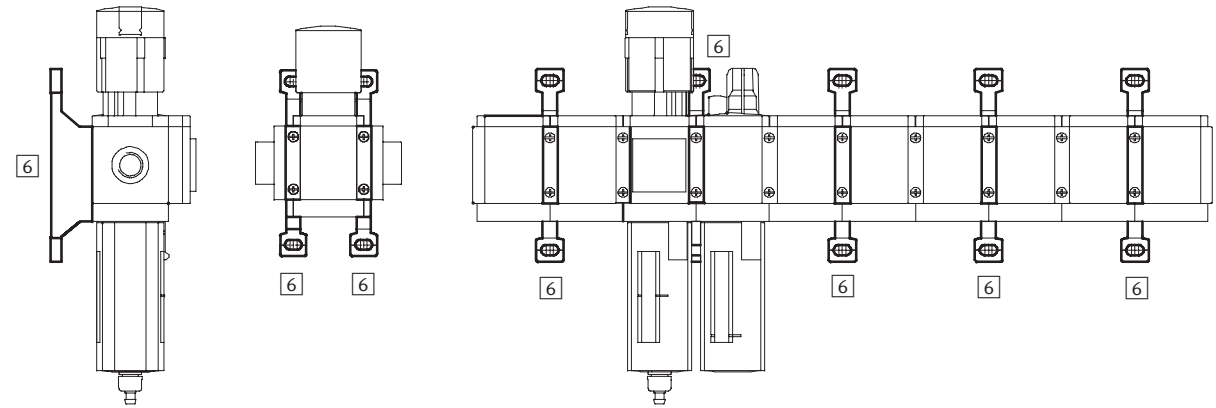
# Membrane Air Dryers MS6N-LDM1 – Inch Series

Accessories Overview

## Mounting Attachments and Accessories



Single unit and combination unit mounting brackets.



# Membrane Air Dryers MS6N-LDM1 – Inch Series

Accessories Overview



Mounting Attachments and Accessories						
		Single unit		Combination unit → 3.1-49		→ Page
		without port plate	with port plate	without port plate	with port plate	
1	Cover cap MS6-END	■	-	■	-	888
2	Port plate MS6N-AQ...	-	■	-	■	889
3	Mounting bracket MS6-WB	■	■	-	-	887
5	Body connector MS6-MV	-	■	■	■	889
6	Mounting bracket MS6-WP/WPB/WPM	-	■	■	■	890

# Membrane Air Dryers MS6N-LDM1 – Inch Series



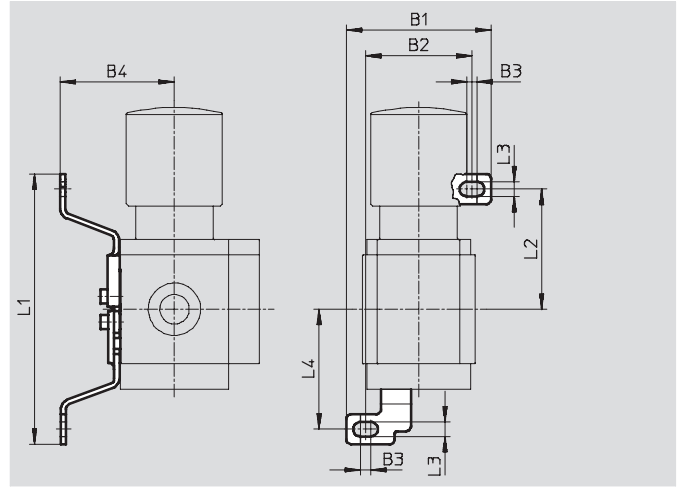
Accessories

## 3 Mounting bracket MS6-WB

- For wall mounting

Material:

Steel



Dimensions and Ordering Data										
B1	B2	B3	B4	L1	L2	L3	L4	Weight [lb]	Part No.	Type
3.13	2.44	0.18	2.17	6.20	2.80	0.26	2.80	0.24	532196	MS6-WB

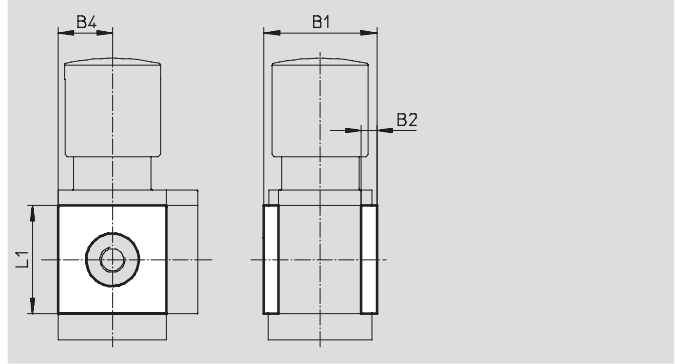
# Membrane Air Dryers MS6N-LDM1 – Inch Series

Accessories

## 1 Cover cap MS6-END

- Can be used to cover the body sides of the first and last module if port plates are not used.

Material:  
Reinforced polyamide  
Free of copper and PTFE



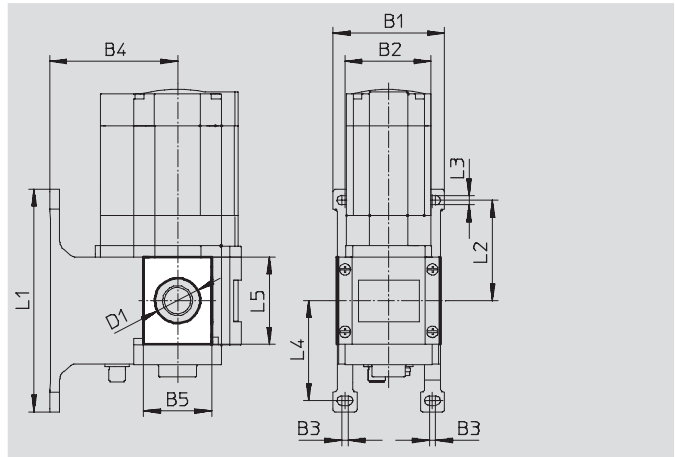
Dimensions and Ordering Data						
B1	B2	B4	L1	Part No.	Type	
2.64	0.31	1.22	2.44	538780	MS6-END	

## Mounting plate MS6-AEND

(order code: WBE; scope of delivery includes mounting bracket MS6-WPB)

- In combination with mounting bracket MS-WP or MS-WPB for mounting an individual unit on a wall with body thread

Material:  
Reinforced polyamide  
Conforms to RoHS  
Free of copper and PTFE



Dimensions and Ordering Data															
B1	B2	B3	B4		B5	D1 ∅	L1	L2	L3	L4	L5	CRC <sup>1)</sup>	Weight [lb]	Part No.	Type
			WP	WPB											
3.11	2.44	0.18	2.13	3.56	1.91	1.26	6.22	2.80	0.26	2.80	2.44	2	0.03	535408	MS6-AEND

1) Corrosion resistance class 2 according to Festo standard 940 070  
Components requiring moderate corrosion resistance. Externally visible parts with primarily decorative surface requirements which are in direct contact with a normal industrial environment or media such as coolants or lubricating agents.



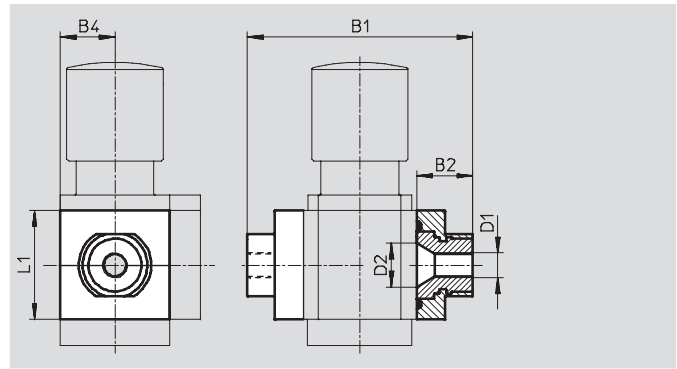
## Membrane Air Dryers MS6N-LDM1 – Inch Series

Accessories

### 2 Port plate MS6N-AQ...

- Adapter for pneumatic connection
- MS6-AGE for implementing threaded connection 3/4 NPT

Material:  
Aluminum



Dimensions and Ordering Data								
B1	B2	B4	D1	D2	L1	Weight [lb]	Part No.	Type
4.53	1.04	1.22	1/4 NPT	0.94	2.44	0.60	526076	MS6N-AQN
			3/8 NPT				526077	MS6N-AQP
			1/2 NPT				526078	MS6N-AQR
			3/4 NPT				526079	MS6N-AQS

### 5 Body connector MS...-MV

- For connecting modules

Material:  
Stainless steel/polyacetate



Ordering Data		
Weight [lb]	Part No.	Type
0.11	532799	MS6-MV

# Membrane Air Dryers MS6N-LDM1 – Inch Series

Accessories



## 6 Mounting Bracket MS6-WP...

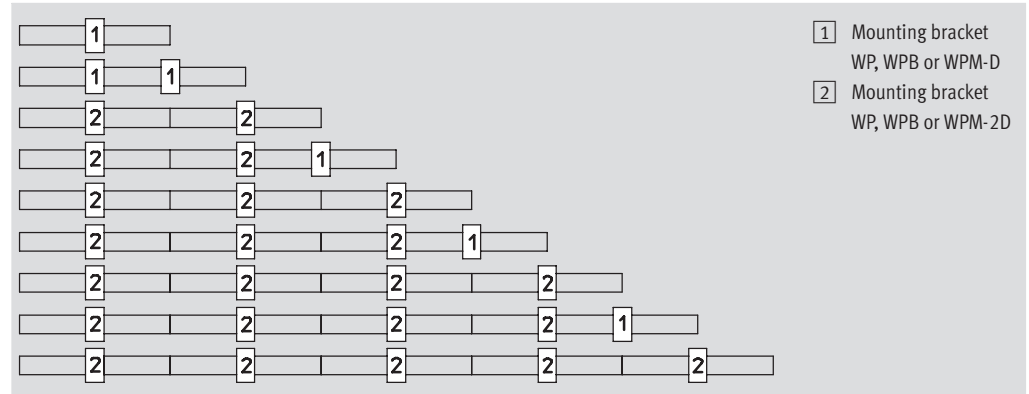
Suggested placement of wall mounting brackets when mounting air preparation combinations

1 unit: 2.44 in with WP, WPB  
2.715 in with WPM-D

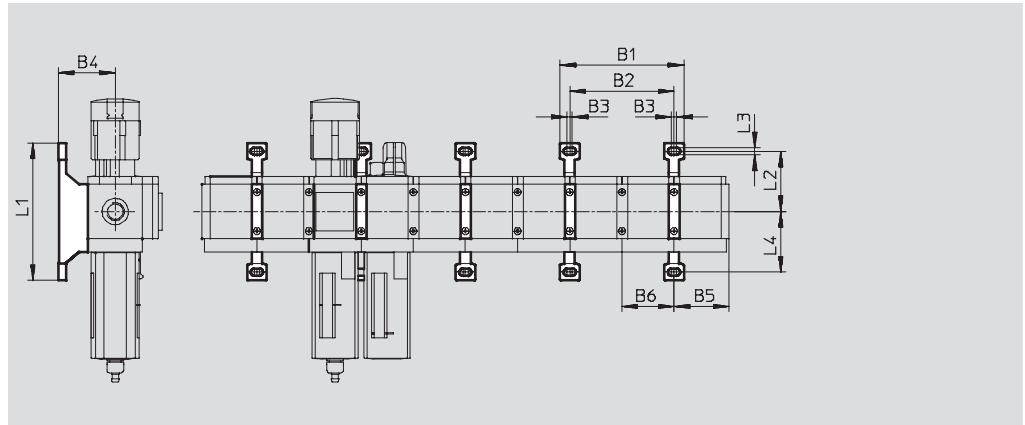
2 units: 4.88 in with WP, WPB  
5.43 in with WPM-2D

Number of units

1 2 3 4 5 6 7 8 9 10



## Mounting dimensions



Type	B1	B2	B3	B4	B5	B6	L1	L2	L3	L4
MS6-WP	5.55	4.88	0.18	2.13	2.54	2.44	6.22	2.80	0.26	2.80
MS6-WPB				3.56						
MS6-WPM-...D	6.61	5.43	0.69	2.13	2.58	2.72	3.88	1.63		1.63

# Membrane Air Dryers MS6N-LDM1 – Inch Series

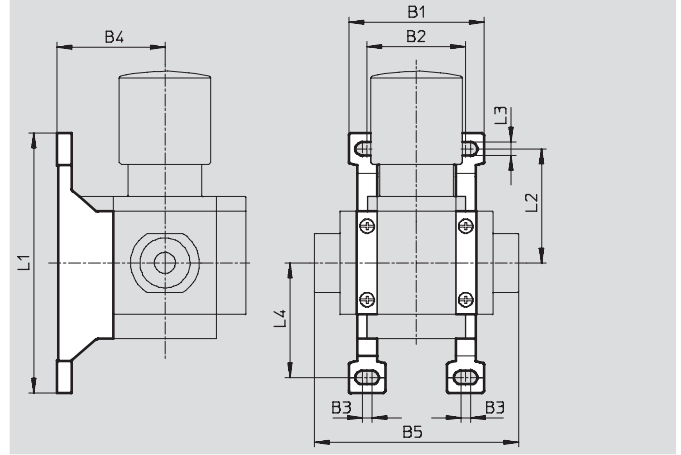


Accessories

## Mounting bracket MS6-WP

- To connect the modules for wall mounting
- In combination with a port plate MS-AG... for mounting an individual unit on a wall
- In combination with mounting plate MS-AEND or for mounting an individual unit with body thread on a wall
- For pressure regulator LRB with angled outlet block B... at rear

Material:  
Die-cast aluminum

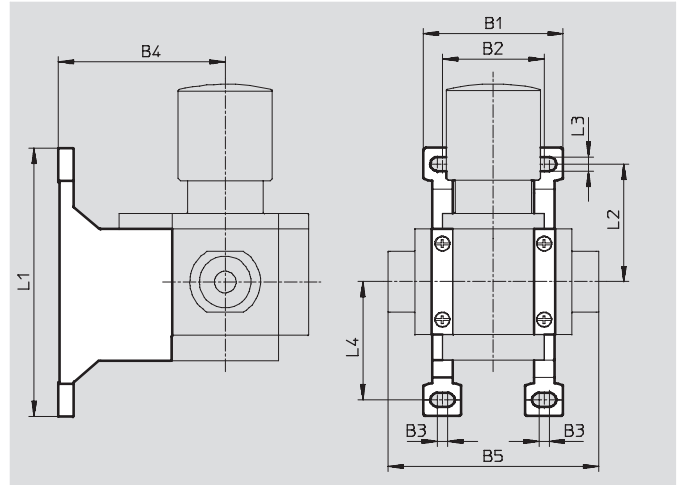


Dimensions and Ordering Data											
B1	B2	B3	B4	B5	L1	L2	L3	L4	Weight [lb]	Part No.	Type
3.11	2.44	0.18	2.13	4.53	6.22	2.80	0.26	2.80	0.15	532195	MS6-WP

## Mounting bracket MS6-WPB

- To connect the modules for wall mounting
- In combination with a port plate MS-AG... for mounting an individual unit on a wall
- In combination with mounting plate MS-AEND or for mounting an individual unit with direct thread on a wall
- Provides large wall gap for pressure regulator

Material:  
Die-cast aluminum



Dimensions and Ordering Data											
B1	B2	B3	B4	B5	L1	L2	L3	L4	Weight [lb]	Part No.	Type
3.11	2.44	0.18	3.56	4.53	6.22	2.80	0.26	2.80	0.23	526074	MS6-WPB

# Membrane Air Dryers MS6N-LDM1 – Inch Series

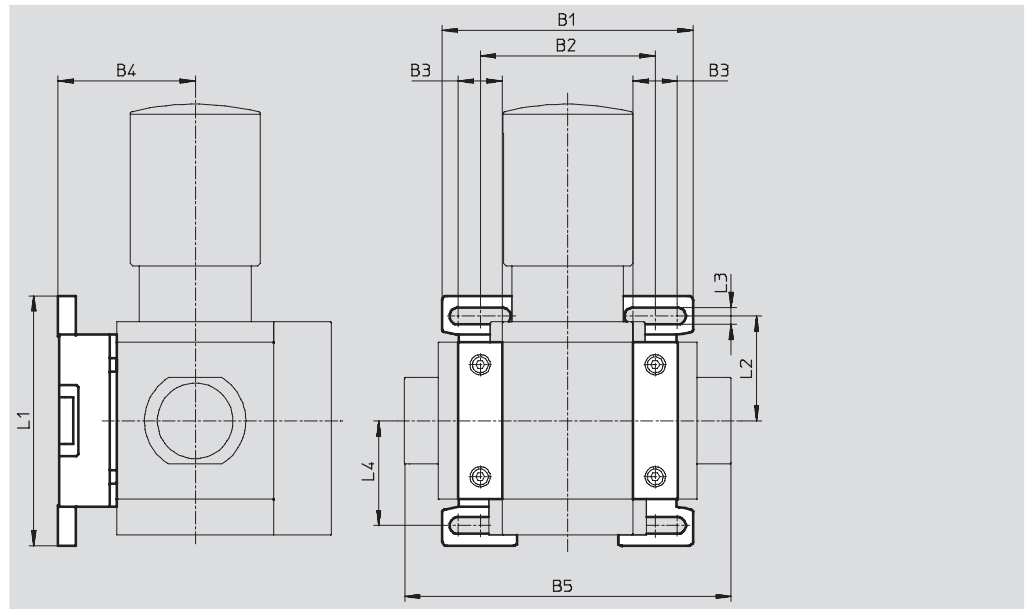
Accessories

## Mounting bracket MS6-WPM

- To connect the modules for wall mounting
- In combination with a port plate MS-AG... for mounting an individual unit on a wall
- Speedy attachment and detachment
- For installation of modules with regulating knob pointing downwards

The distance piece D or 2D (designated in the type code) is included in the scope of delivery and ensures the correct clearance

Material:  
Die-cast aluminum



Dimensions and Ordering Data												
B1	B2	B3	B4	B5	L1	L2	L3	L4	Clearance	Weight [lb]	Part No.	Type
3.90	2.72	0.69	2.13	5.08	3.88	1.63	0.24	1.63	2.44	0.29	526073	MS6-WPM-D
6.61	5.43			7.80					4.88			

## Body connector MS6-MVM

- For installation of modules with regulating knob pointing downwards

Material:  
Die-cast aluminum

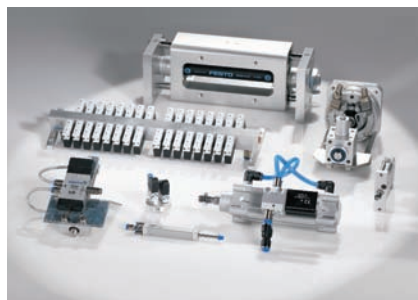


Ordering Data		
Size	Part No.	Type
MS6	532801	MS6-MVM

## Product Range and Company Overview

### A Complete Suite of Automation Services

Our experienced engineers provide complete support at every stage of your development process, including: conceptualization, analysis, engineering, design, assembly, documentation, validation, and production.



**Custom Automation Components**  
Complete custom engineered solutions



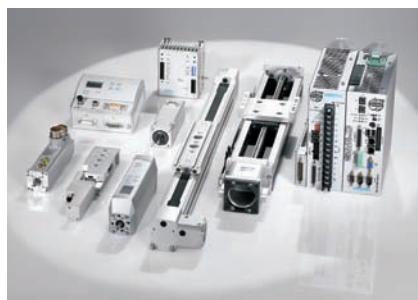
**Custom Control Cabinets**  
Comprehensive engineering support  
and on-site services



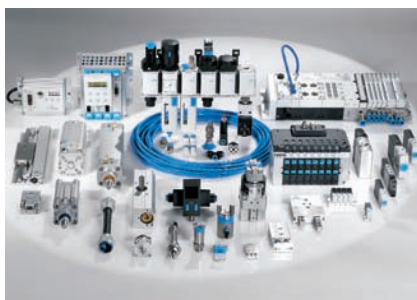
**Complete Systems**  
Shipment, stocking and storage services

### The Broadest Range of Automation Components

With a comprehensive line of more than 30,000 automation components, Festo is capable of solving the most complex automation requirements.



**Electromechanical**  
Electromechanical actuators, motors,  
controllers & drives



**Pneumatics**  
Pneumatic linear and rotary actuators,  
valves, and air supply



**PLCs and I/O Devices**  
PLC's, operator interfaces, sensors  
and I/O devices

### Supporting Advanced Automation... As No One Else Can!

Festo is a leading global manufacturer of pneumatic and electromechanical systems, components and controls for industrial automation, with more than 11,500 employees in 56 national headquarters serving more than 180 countries. For more than 80 years, Festo has continuously elevated the state of manufacturing with innovations and optimized motion control solutions that deliver higher performing, more profitable automated manufacturing and processing equipment. Our dedication to the advancement of automation extends beyond technology to the education and development of current and future automation and robotics designers with simulation tools, teaching programs, and on-site services.

### Quality Assurance, ISO 9001 Certification

Festo Corporation is committed to provide Festo products and services that will meet or exceed our customers' requirements in product quality, delivery, customer service and satisfaction.

All Festo locations within the United States are registered to ISO 9001.



# Festo North America

## United States

### Customer Resource Center

502 Earth City Expy., Suite 125  
Earth City, MO 63045

For ordering assistance, or to find  
your nearest Festo Distributor,

**Call:** 1.800.99.FESTO

**Fax:** 1.800.96.FESTO

**Email:** [customer.service@us.festo.com](mailto:customer.service@us.festo.com)

For technical support,

**Call:** 1.866.GO.FESTO

**Fax:** 1.800.96.FESTO

**Email:** [product.support@us.festo.com](mailto:product.support@us.festo.com)

### Headquarters

Festo Corporation  
395 Moreland Road  
P.O. Box 18023  
Hauppauge, NY 11788  
[www.festo.com/us](http://www.festo.com/us)

### Sales Offices

#### Appleton

N. 922 Tower View Drive, Suite N  
Greenville, WI 54942

#### Boston

120 Presidential Way, Suite 330  
Woburn, MA 01801

#### Chicago

1441 East Business Center Drive  
Mt. Prospect, IL 60056

#### Dallas

1825 Lakeway Drive, Suite 600  
Lewisville, TX 75057

#### Detroit - Automotive Engineering Center

2601 Cambridge Court, Suite 320  
Auburn Hills, MI 48326

#### New York

395 Moreland Road  
Hauppauge, NY 11788

#### Silicon Valley

2800 Collier Canyon Road  
Livermore, CA 94550

## Design and Manufacturing Operations



**East:** 395 Moreland Road, Hauppauge, NY 11788



**Central:** 1441 East Business Center Drive, Mt. Prospect, IL 60056



**West:** 2800 Collier Canyon Road, Livermore, CA 94550

## Mexico

### Headquarters

Festo Pneumatic, S.A.  
Av. Ceylán 3, Col. Tequesquahuac  
54020 Tlalnepantla, Edo. de México  
Call: 011 52 [55] 53 21 66 00  
Fax: 011 52 [55] 53 21 66 65  
Email: [festo.mexico@mx.festo.com](mailto:festo.mexico@mx.festo.com)  
[www.festo.com/mx](http://www.festo.com/mx)



## Canada

### Headquarters

Festo Inc.  
5300 Explorer Drive  
Mississauga, Ontario L4W 5G4  
Call: 1.905.624.9000  
Fax: 1.905.624.9001  
Email: [info.ca@ca.festo.com](mailto:info.ca@ca.festo.com)  
[www.festo.com/ca](http://www.festo.com/ca)



## Festo Worldwide

Argentina Australia Austria Belarus Belgium Brazil Bulgaria Canada Chile China Colombia Croatia Czech Republic Denmark  
Estonia Finland France Germany Great Britain Greece Hong Kong Hungary India Indonesia Iran Ireland Israel Italy Japan  
Latvia Lithuania Malaysia Mexico Netherlands New Zealand Norway Peru Philippines Poland Romania Russia Serbia Singapore  
Slovakia Slovenia South Africa South Korea Spain Sweden Switzerland Taiwan Thailand Turkey Ukraine United States Venezuela

[www.festo.com](http://www.festo.com)