

Standard Filters MS4-LF – Metric Series



Standard filters, with filtration grades of 5 microns or 40 microns, are equipped with a water separator that cleans the compressed air of impurities, rust, and condensate. For pre-filtering in pneumatic systems or for special applications.

- Pneumatic connection: G1/8, G1/4, G3/8
- Supply pressure
 - For manual drain: 0 ... 14 bar
 - For semiautomatic drain: 1.5 ... 12 bar
 - For fully automatic drain: 2 ... 12 bar
- Flow rate: 1,000 ... 1,700 l/min

Product Range Overview													
Type	Pneumatic connections		Filtration grade [µm]				Bowl guard		Bowl drain			Contamination control	Reverse flow
	Body thread	Port plate	0.01	1	5	40	Plastic bowl guard	Metal bowl	Manual	Semiautomatic	Fully automatic	Differential pressure indicator	Flow direction from right to left
MS4		AG...	A	B	C	E	R	U	M	H	V	DA	Z
LF	G1/8, G1/4	G1/8, G1/4, G3/8	–	–	■	■	■	■	■	■	■	–	■

Features

- Sintered filter with centrifugal separation removes contamination, rust and condensate from the compressed air.
- High flow rate with minimal pressure drop
- Replaceable filter cartridges

Contents

Technical Data	➔ 206
Dimensional Drawings	➔ 210
Ordering Data	➔ 211
Accessories	➔ 214
Replacement Parts	➔ 222

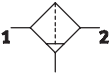
➔ www.festo.com/catalog/ms4-lf

Standard Filters MS4-LF – Metric Series

Technical Data

FESTO

ISO Symbol



Manual bowl drain



Semi or fully automatic bowl drain



General Technical Data			
Pneumatic connection 1, 2		G1/8	G1/4
Filtration grade	[μm]	5 (air purity class at the output 3.7.– to DIN ISO 8573-1)	
		40 (air purity class at the output 5.7.– to DIN ISO 8573-1)	
Supply pressure	M [bar]	0 ... 14 (manual drain)	
	H [bar]	1.5 ... 12 (semiautomatic drain)	
	V [bar]	2 ... 12 (fully automatic drain)	

Note: This product conforms with the ISO 1179-1 standard and the ISO 228-1 standard.

Standard Nominal Flow Rate qnN ¹⁾ [l/min]			
Pneumatic connection 1, 2		G1/8	G1/4
Filtration grade	5 μm	1,000	1,300
	40 μm	1,100	1,700

1) Measured at p1 = 6 bar and Δp = 1 bar

Standard Filters MS4-LF – Metric Series

Technical Data

FESTO

Operating and Environmental Conditions			
Bowl drain	Manual M	Semiautomatic H	Fully automatic V
Operating medium	Compressed air		
Max. condensate volume [cm ³]	19 (with plastic bowl guard) 25 (with metal bowl)		
Bowl guard	Plastic bowl guard		
	Metal bowl		
Ambient temperature [°C]	–10 ... +60	+5 ... +60	+5 ... +60
Temperature of medium [°C]	–10 ... +60	+5 ... +60	+5 ... +60
Storage temperature [°C]	–10 ... +60	–10 ... +60	–10 ... +60
Assembly position	Vertical ±5°		
Corrosion resistance CRC ¹⁾	2		

1) Corrosion resistance class 2 according to Festo standard 940 070

Components requiring moderate corrosion resistance. Externally visible parts with primarily decorative surface requirements which are in direct contact with a normal industrial environment or media such as coolants or lubricating agents.

Weights [g]	
With plastic bowl guard	190
With metal bowl	350

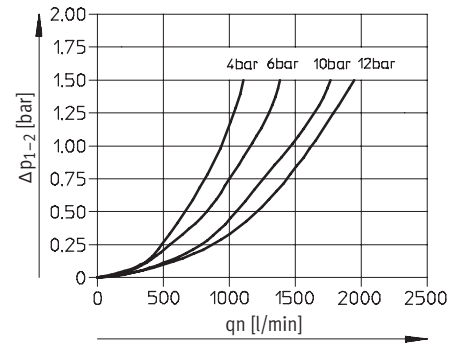
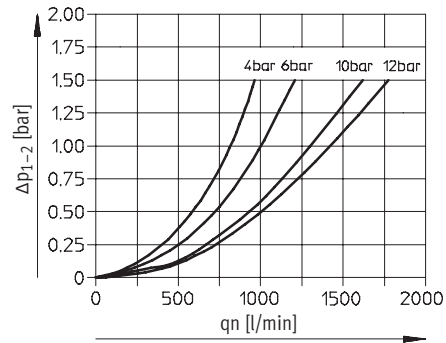
- Wearing parts kits → 222
- Filter cartridges → 222
- For spare parts go to: www.festo.com/en/spare_parts_service

Standard Filters MS4-LF – Metric Series

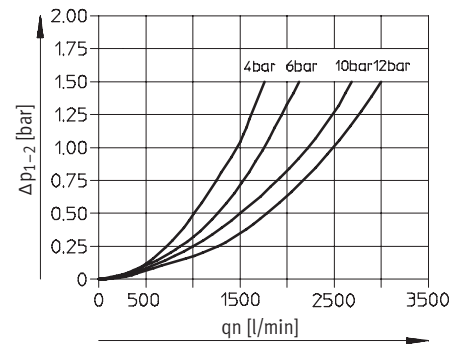
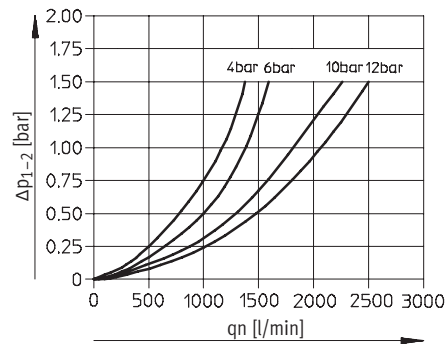
Technical Data



Standard Flow Rate q_n as a Function of the Differential Pressure Δp_{1-2}		
	Filtration grade 5 μm	Filtration grade 40 μm
MS4-LF-1/8		



MS4-LF-1/4



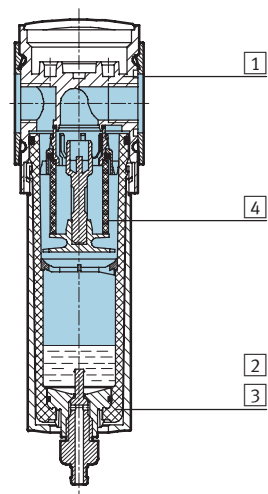
Standard Filters MS4-LF – Metric Series

Technical Data



Materials

Sectional view

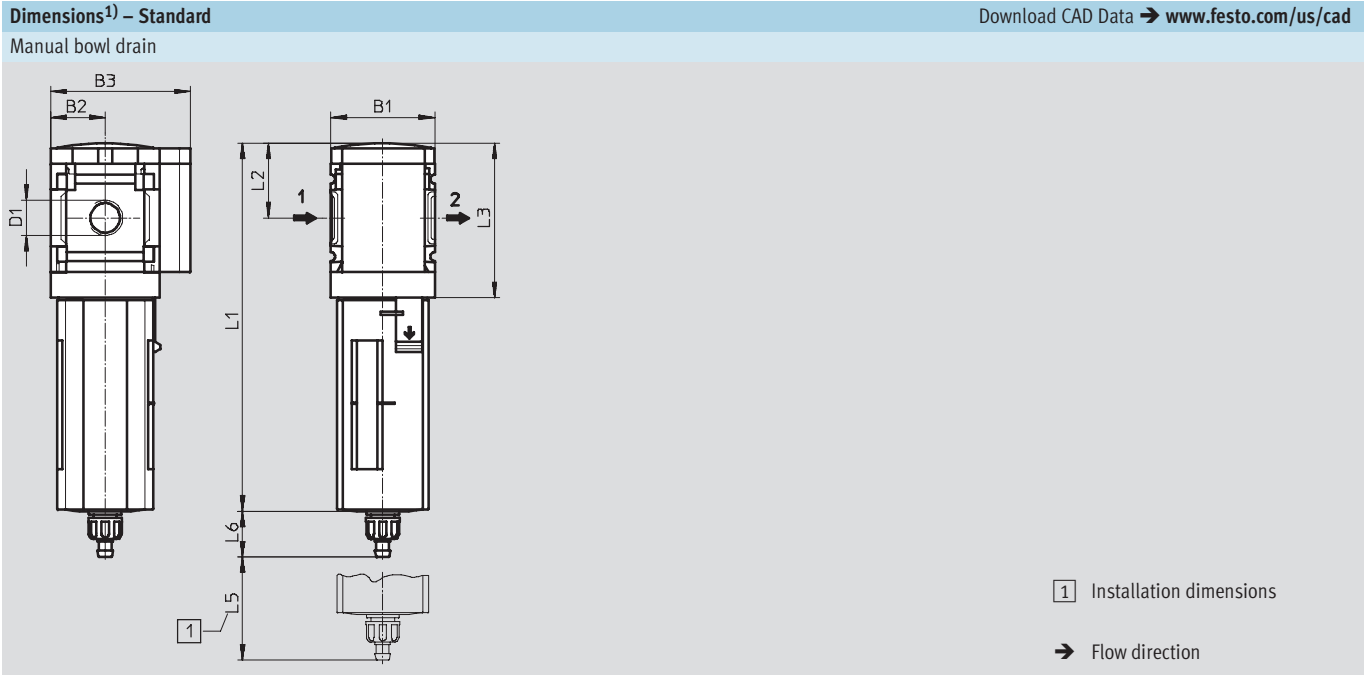


Filters		
1	Body	Die-cast aluminum
2	Plastic bowl guard	Polycarbonate/polyamide
3	Metal bowl	Aluminum
	Viewing window	Polyamide
4	Filter element	Polyethylene
-	Seals	Nitrile rubber
	Note on materials	Free of copper and PTFE

Standard Filters MS4-LF – Metric Series

Dimensional Drawings

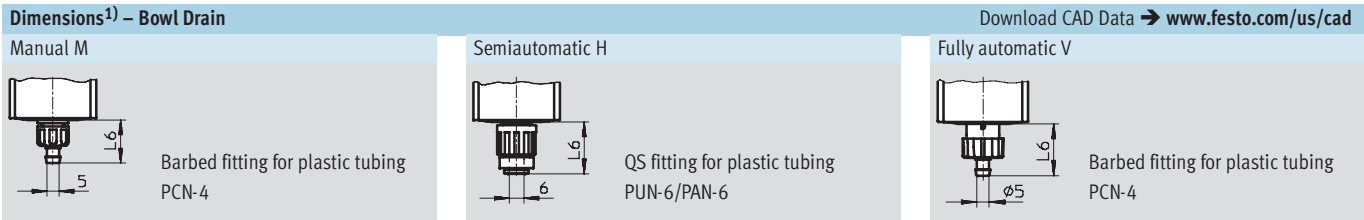
FESTO



Type	B1	B2	B3	D1	L1		L2	L3	L5	L6	
					Bowl guard					Bowl guard	
					Plastic	Metal				Plastic	Metal
MS4-LF-1/8	40	21	54	G1/8	142.8	159.4	29	60.5	25	17.7	17.7
MS4-LF-1/4				G1/4							

1) Dimensions are in millimeters, unless otherwise noted.

Note: This product conforms with the ISO 1179-1 standard and the ISO 228-1 standard.



Type	L6
Plastic bowl guard	
MS4-LF-...-M	17.7
Metal bowl	
MS4-LF-...-M	17.7

Type	L6
Plastic bowl guard	
MS4-LF-...-H	22.1
Metal bowl	
MS4-LF-...-H	22.1

Type	L6
Plastic bowl guard	
MS4-LF-...-V	20.4
Metal bowl	
MS4-LF-...-V	20.4

1) Dimensions are in millimeters, unless otherwise noted.

Standard Filters MS4-LF – Metric Series

Ordering Data – Pre-configured Products

FESTO

Ordering Data									
Bowl drain	Connection	Filtration grade 5 µm				Filtration grade 40 µm			
		Part No.	Type		LT	Part No.	Type		LT
Plastic bowl guard									
Manual	G1/8	529403	MS4-LF-1/8-CRM		1D	529407	MS4-LF-1/8-ERM		Q
	G1/4	529395	MS4-LF-1/4-CRM		1D	529399	MS4-LF-1/4-ERM		Q
Fully automatic	G1/8	529405	MS4-LF-1/8-CRV		1D	529409	MS4-LF-1/8-ERV		Q
	G1/4	529397	MS4-LF-1/4-CRV		1D	529401	MS4-LF-1/4-ERV		Q
Metal bowl									
Manual	G1/8	535638	MS4-LF-1/8-CUM		Q	535644	MS4-LF-1/8-EUM		Q
	G1/4	535654	MS4-LF-1/4-CUM		Q	535660	MS4-LF-1/4-EUM		Q
Fully automatic	G1/8	535640	MS4-LF-1/8-CUV		Q	535642	MS4-LF-1/8-EUV		Q
	G1/4	535656	MS4-LF-1/4-CUV		Q	535658	MS4-LF-1/4-EUV		Q

LT = Lead time

1D typically ships same day/next day

1W typically ships within 1 week

Q request a quote for lead time

Standard Filters MS4-LF – Metric Series

Ordering Data – Configurable Products



Mandatory Data

Part No.	Series	Size	Function	Connection size	Filtration grade	Bowl
527695	MS	4	LF	1/8, 1/4, AGA, AGB, AGC	E C	R U
Order example						
527695	MS	4	- LF	- AGB	- E	- R

Ordering Table

Grid dimension	[mm]	40	Conditions	Code	Enter code
M Part No.		527695			
Series		Standard		MS	MS
Size		4		4	4
Function		Filters		-LF	-LF
Connection size		Body thread G1/8		-1/8	
		Body thread G1/4		-1/4	
		Port plate G1/8 (dimensions → 218)		-AGA	
		Port plate G1/4 (dimensions → 218)		-AGB	
		Port plate G3/8 (dimensions → 218)		-AGC	
Filtration grade		40 µm		-E	
		5 µm		-C	
Bowl		Plastic bowl with plastic bowl guard		-R	
		Metal bowl		-U	

Transfer order code

527695	MS	4	- LF	-		-		-	
--------	----	---	------	---	--	---	--	---	--

Standard Filters MS4-LF – Metric Series



Ordering Data – Configurable Products

→ M Mandatory Data		O Options	
Bowl drain		Type of mounting	Reverse flow direction
M H V		WP WPM WB WBM	Z
- M		- WP	- Z

Ordering Table					
Grid dimension	[mm]	40	Conditions	Code	Enter code
↓ M	Bowl drain	Manual		-M	
		Semiautomatic (P1 max. 12 bar)		-H	
		Fully automatic (P1 max. 12 bar)		-V	
O	Type of mounting	Mounting bracket (dimensions → 219)	1	-WP	
		Mounting bracket (dimensions → 219)	1	-WPM	
		Mounting bracket (dimensions → 216)		-WB	
		Mounting bracket (dimensions → 216)		-WBM	
	Reverse flow direction	Flow direction from right to left		-Z	

1 WP, WPM Only with port plate AGA, AGB or AGC

Transfer order code

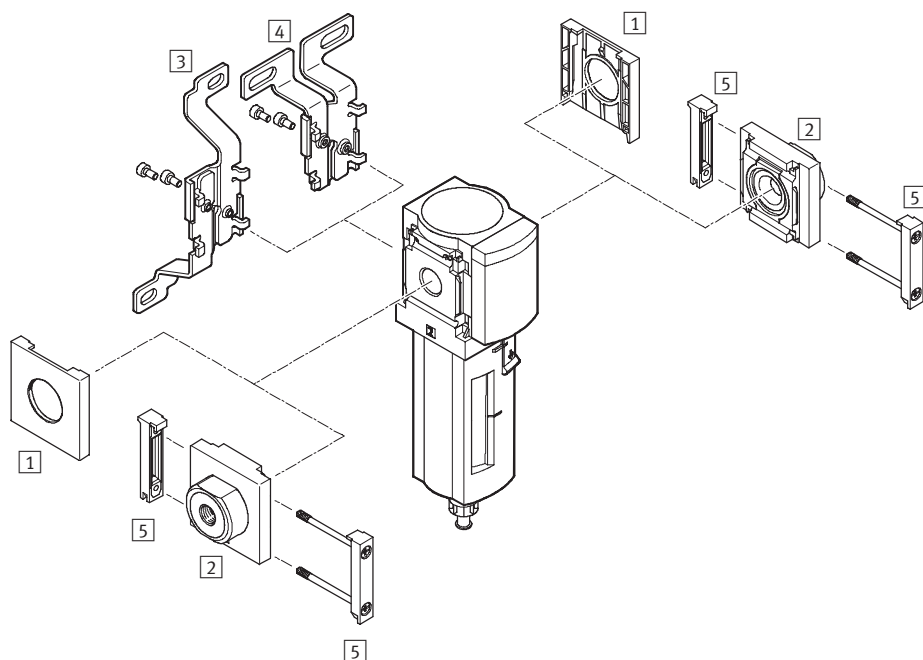
-		-		-	
---	--	---	--	---	--

Standard Filters MS4-LF – Metric Series

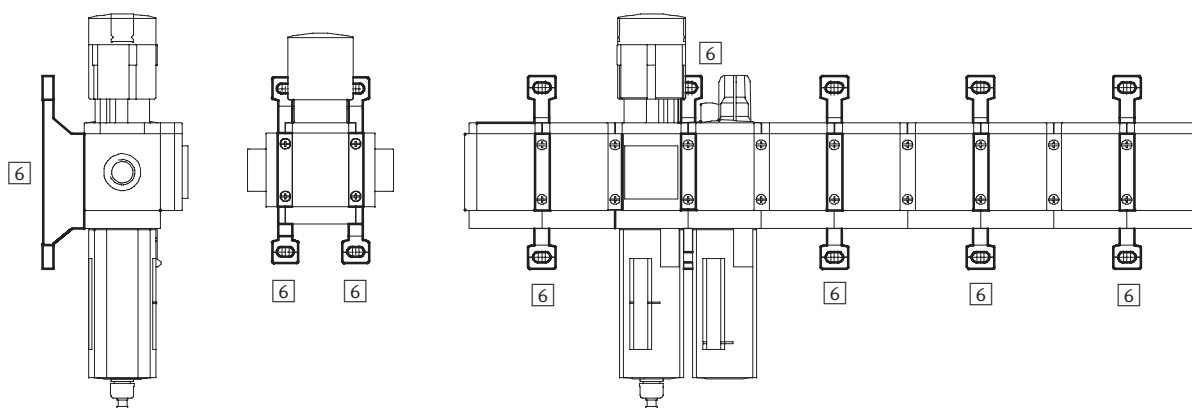
Accessories Overview

FESTO

Mounting Attachments and Accessories



Single unit and combination unit mounting brackets.



Standard Filters MS4-LF – Metric Series

Accessories Overview



Mounting Attachments and Accessories						
		Single unit		Combination unit ➔ 2.1-1		➔ Page
		without port plate	with port plate	without port plate	with port plate	
1	Cover cap MS4-END	■	–	■	–	217
2	Port plate MS4-AG...	–	■	–	■	218
3	Mounting bracket MS4-WB	■	■	–	–	216
4	Mounting bracket MS4-WBM	■	■	–	–	216
5	Body connector MS4-MV	–	■	■	■	218
6	Mounting bracket MS4-WP/WPB/WPM	–	■	■	■	219

Standard Filters MS4-LF – Metric Series

Accessories

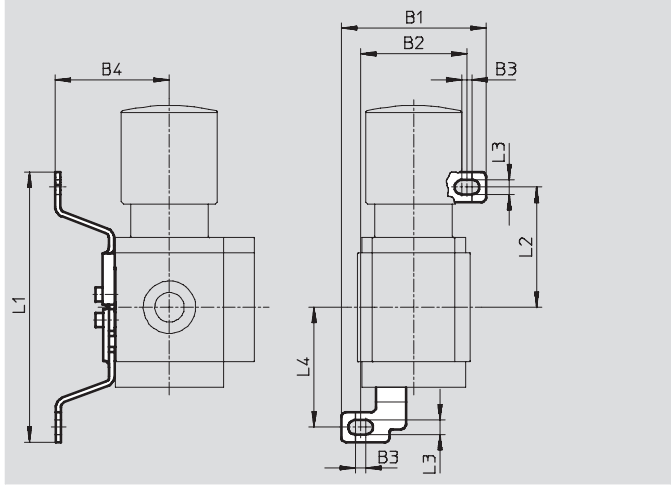
FESTO

3 Mounting bracket MS4-WB

- For wall mounting

Material:

Steel



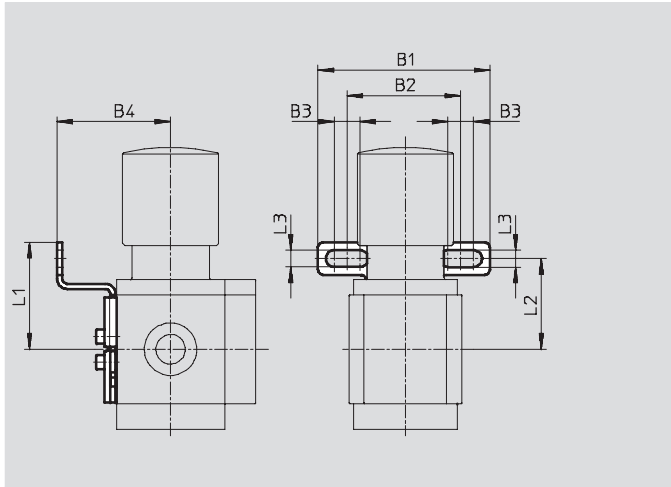
Dimensions and Ordering Data									
B1	B2	B3	B4	L1	L2	L3	L4	Weight [g]	Part No. Type
56.2	41.2	4	44.2	104.6	46.6	5.6	46.5	46	532185 MS4-WB

4 Mounting bracket MS4-WBM

- For wall mounting

Material:

Steel



Dimensions and Ordering Data									
B1	B2	B3	B4	L1	L2	L3	Weight [g]	Part No.	Type
66.5	44	10	44	41.3	35	6.5	48	526062	MS4-WBM

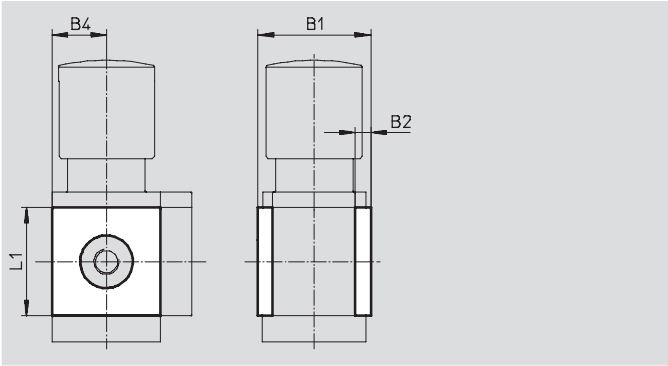
Standard Filters MS4-LF – Metric Series

Accessories

1 Cover cap MS4-END

- Can be used to cover the body sides of the first and last module if port plates are not used.

Material:
Reinforced polyamide
Free of copper and PTFE

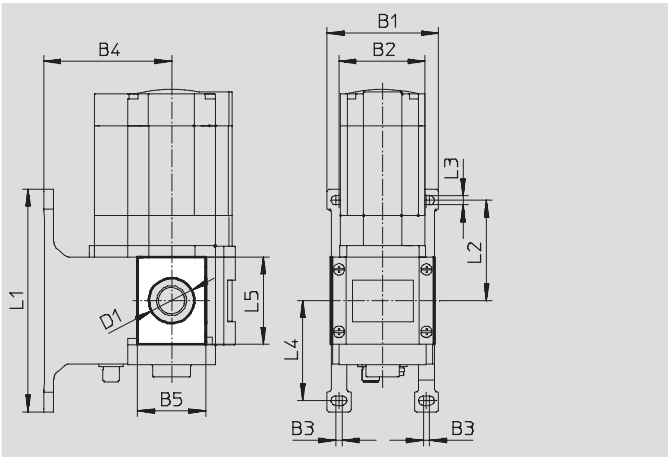


Dimensions and Ordering Data						
B1	B2	B4	L1	Part No.	Type	
43.6	6	21	42	538779	MS4-END	

Mounting plate MS4-AEND

- In combination with mounting bracket MS-WP or MS-WPB for mounting an individual unit with body thread on a wall

Material:
Reinforced polyamide
Conforms to RoHS
Free of copper and PTFE



Dimensions and Ordering Data															
B1	B2	B3	B4		B5	D1 Ø	L1	L2	L3	L4	L5	CRC ¹⁾	Weight [g]	Part No.	Type
			WP	WPB											
55.2	40.2	4	44	66	30.4	20.3	106	46.5	5.6	46.7	42	2	4	542966	MS4-AEND

1) Corrosion resistance class 2 according to Festo standard 940 070
Components requiring moderate corrosion resistance. Externally visible parts with primarily decorative surface requirements which are in direct contact with a normal industrial environment or media such as coolants or lubricating agents.

Filters MS4-LF/LFM/LFX – Metric Series

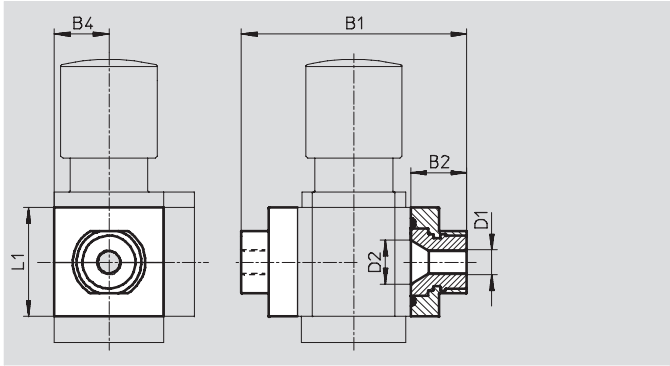
Accessories



2 Port plate MS4-AG...

- Adapter for pneumatic connection

Material:
Aluminum



Dimensions and Ordering Data								
B1	B2	B4	D1	D2	L1	Weight [g]	Part No.	Type
83.5	21.5	21	G1/8	16.8	42	128	526068	MS4-AGA
			G1/4				526069	MS4-AGB
			G3/8				526070	MS4-AGC

5 Body connector MS4-MV

- For connecting modules

Material:
Stainless steel/polyacetate



Ordering Data		
Weight [g]	Part No.	Type
36	532798	MS4-MV

Standard Filters MS4-LF – Metric Series



Accessories

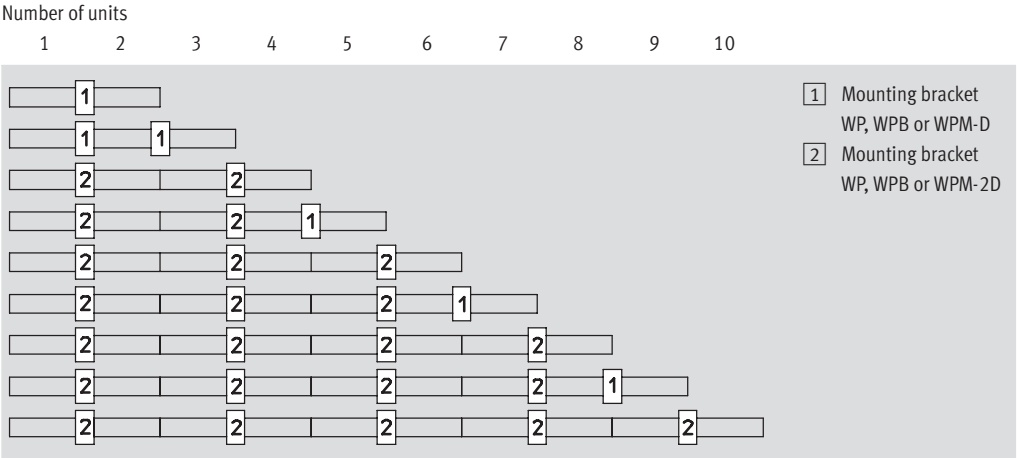
6

Mounting Bracket MS4-WP...

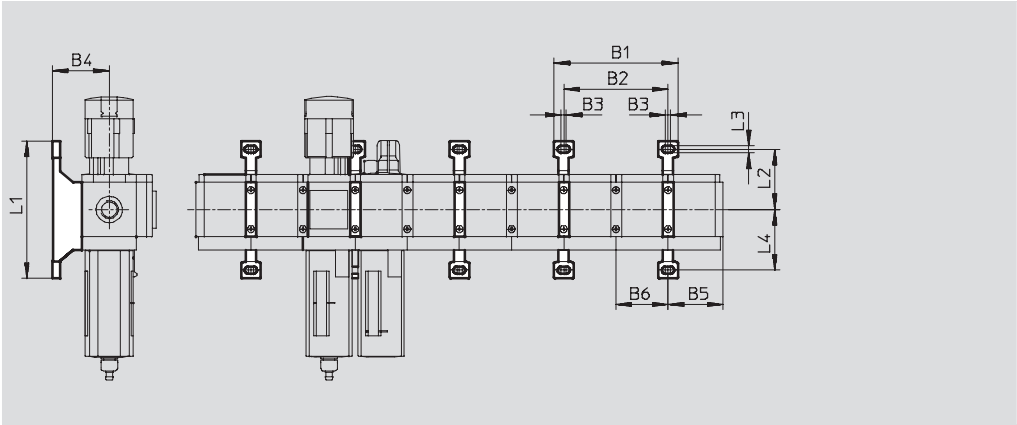
Suggested placement of wall mounting brackets when mounting air preparation combinations

1 unit: 40 mm

2 units: 80 mm



Mounting dimensions



Type	B1	B2	B3	B4	B5	B6	L1	L2	L3	L4
MS4-WP	95.2	80	4	44	41.9	40	106	46.5	5.6	46.7
MS4-WPB				66						
MS4-WPM-...D				44			92.8	34.8		40

Standard Filters MS4-LF – Metric Series

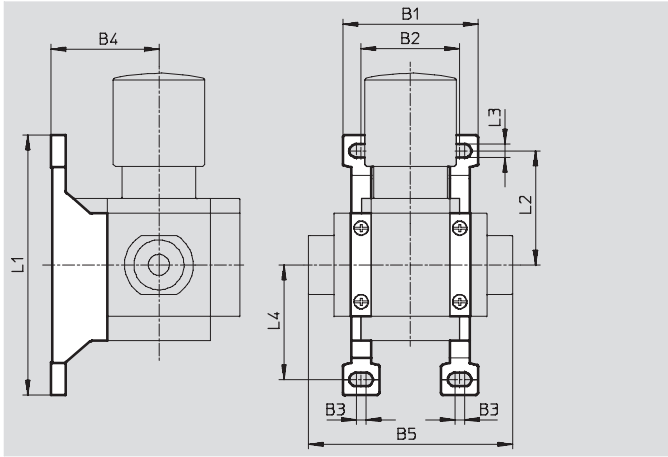
Accessories

Mounting bracket MS4-WP

- To connect the modules for wall mounting
- In combination with a port plate MS-AG... for mounting an individual unit on a wall
- In combination with mounting plate MS-AEND or for mounting an individual unit with body thread on a wall
- For pressure regulator LRB with angled outlet block B... at rear

Material:

Die-cast aluminum



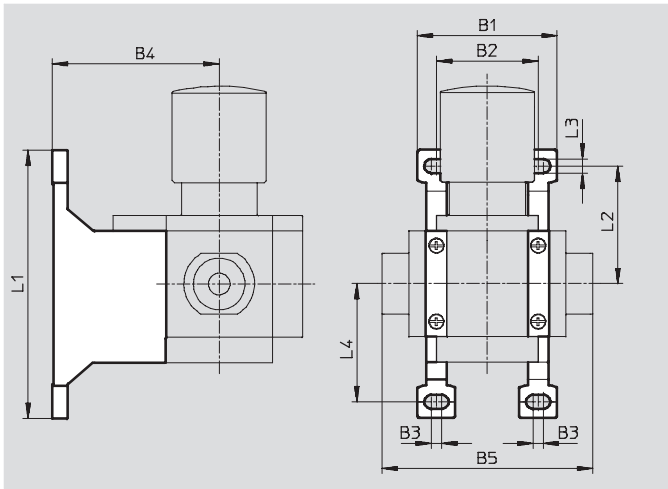
Dimensions and Ordering Data										
B1	B2	B3	B4	B5	L1	L2	L3	L4	Weight [g]	Part No. Type
55.2	40.2	4	44	83.4	106	46.5	5.6	46.7	39	532184 MS4-WP

Mounting bracket MS4-WPB

- To connect the modules for wall mounting
- In combination with a port plate MS-AG... for mounting an individual unit on a wall
- In combination with mounting plate MS-AEND or for mounting an individual unit with direct thread on a wall
- Provides large wall gap for pressure regulator

Material:

Die-cast aluminum



Dimensions and Ordering Data										
B1	B2	B3	B4	B5	L1	L2	L3	L4	Weight [g]	Part No. Type
55.2	40.2	4	66	83.4	106	46.5	5.6	46.7	55	526063 MS4-WPB

Standard Filters MS4-LF – Metric Series

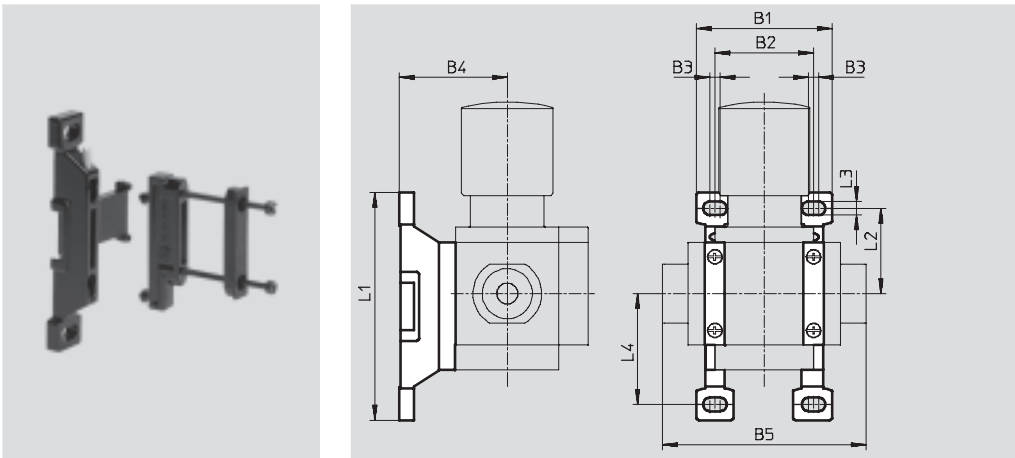
Accessories

Mounting bracket MS4-WPM

- To connect the modules for wall mounting
- In combination with a port plate MS-AG... for mounting an individual unit on a wall
- Speedy attachment and detachment
- For installation of modules with regulating knob pointing downwards

The distance piece D or 2D (designated in the type code) is included in the scope of delivery and ensures the correct clearance

Material:
Die-cast aluminum



Dimensions and Ordering Data												
B1	B2	B3	B4	B5	L1	L2	L3	L4	Clearance	Weight [g]	Part No.	Type
55.2	40	4	44	83.4	92.8	34.8	5.6	45.2	40	45	526060	MS4-WPM-D
95.2	80			123.4					80	55	526061	MS4-WPM-2D

Body connector MS4-MVM

- For installation of modules with regulating knob pointing downwards

Material:
Die-cast aluminum



Ordering Data		
Size	Part No.	Type
MS4	532800	MS4-MVM

Standard Filters MS4-LF – Metric Series

Replacement Parts

FESTO

Ordering Data – Wearing Parts Kits			
Size	Description	Part No.	Type
MS4	O-rings, screws, sealing ring	673639	MS4-LF



Ordering Data – Filter Cartridges			
Size	Filtration grade [µm]	Part No.	Type
MS4	5	534501	MS4-LFP-C
	40	534502	MS4-LFP-E

- For spare parts go to: www.festo.com/en/spare_parts_service

Standard Filters MS4N-LF – Inch Series

FESTO



Standard filters, with filtration grades of 5 microns or 40 microns, are equipped with a water separator that cleans the compressed air of impurities, rust, and condensate. For pre-filtering in pneumatic systems or for special applications.

- Pneumatic connection: 1/8 NPT, 1/4 NPT, 3/8 NPT
- Supply pressure
 - For manual drain: 0 ... 235 psi
 - For semiautomatic drain: 22 ... 176 psi
 - For fully automatic drain: 29 ... 176 psi
- Flow rate: 35.3 ... 60.0 scfm

Product Range Overview													
Type	Pneumatic connections		Filtration grade [µm]				Bowl guard		Bowl drain			Contamination control	Reverse flow
	Body thread	Port plate	0.01	1	5	40	Plastic bowl guard	Metal bowl	Manual	Semiautomatic	Fully automatic	Differential pressure indicator	Flow direction from right to left
MS4N		AG...	A	B	C	E	R	U	M	H	V	DA	Z
LF	1/8 NPT, 1/4 NPT	1/8 NPT, 1/4 NPT, 3/8 NPT	–	–	■	■	■	■	■	■	■	–	■

Features

- Sintered filter with centrifugal separation removes contamination, rust and condensate from the compressed air.
- High flow rate with minimal pressure drop
- Replaceable filter cartridges

Contents

Technical Data	➔ 224
Dimensional Drawings	➔ 228
Ordering Data	➔ 229
Accessories	➔ 232
Replacement Parts	➔ 240

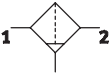
➔ www.festo.com/catalog/ms4n-lf

Standard Filters MS4N-LF – Inch Series

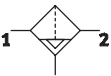
Technical Data

FESTO

ISO Symbol



Manual bowl drain



Semi or fully automatic bowl drain



General Technical Data			
Pneumatic connection 1, 2		1/8 NPT	1/4 NPT
Filtration grade	[µm]	5 (air purity class at the output 3.7.– to DIN ISO 8573-1)	
		40 (air purity class at the output 5.7.– to DIN ISO 8573-1)	
Supply pressure	M [psi]	0 ... 206 (manual drain)	
	H [psi]	22 ... 176 (semiautomatic drain)	
	V [psi]	29 ... 176 (fully automatic drain)	

Standard Nominal Flow Rate q _N ¹⁾ [scfm]			
Pneumatic connection 1, 2		1/8 NPT	1/4 NPT
Filtration grade	5 µm	35.3	45.9
	40 µm	38.8	60.0

1) Measured at p₁ = 88 psi and Δp = 15 psi

Standard Filters MS4N-LF – Inch Series

Technical Data

FESTO

Operating and Environmental Conditions			
Bowl drain	Manual M	Semiautomatic H	Fully automatic V
Operating medium	Compressed air		
Max. condensate volume [in ³]	1.16 (with plastic bowl guard) 1.53 (with metal bowl)		
Bowl guard	Plastic bowl guard		
	Metal bowl		
Ambient temperature [°F]	14 ... 140	41 ... 140	41 ... 140
Temperature of medium [°F]	14 ... 140	41 ... 140	41 ... 140
Storage temperature [°F]	14 ... 140	14 ... 140	14 ... 140
Assembly position	Vertical ±5°		
Corrosion resistance CRC ¹⁾	2		

1) Corrosion resistance class 2 according to Festo standard 940 070

Components requiring moderate corrosion resistance. Externally visible parts with primarily decorative surface requirements which are in direct contact with a normal industrial environment or media such as coolants or lubricating agents.

Weights [lb]	
With plastic bowl guard	0.38
With metal bowl	0.70

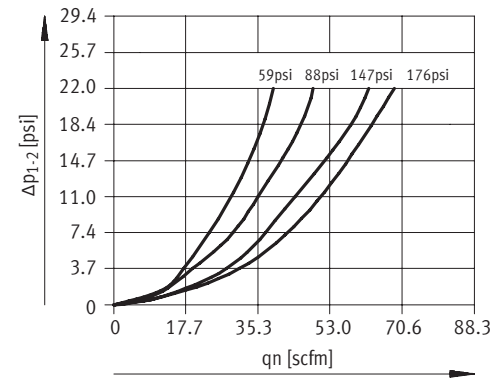
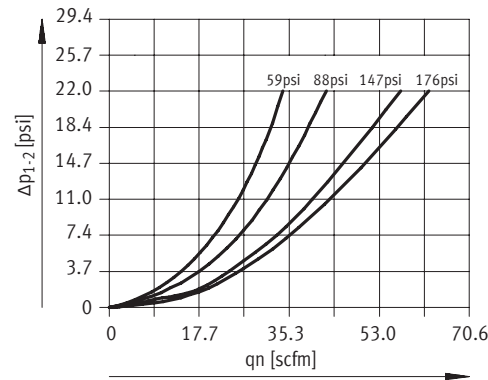
- Wearing parts kits → 240
- Filter cartridges → 240
- For spare parts go to: www.festo.com/en/spare_parts_service

Standard Filters MS4N-LF – Inch Series

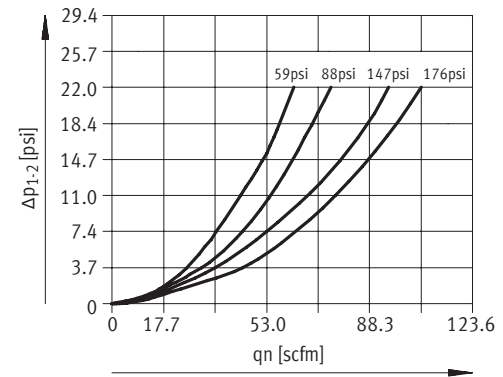
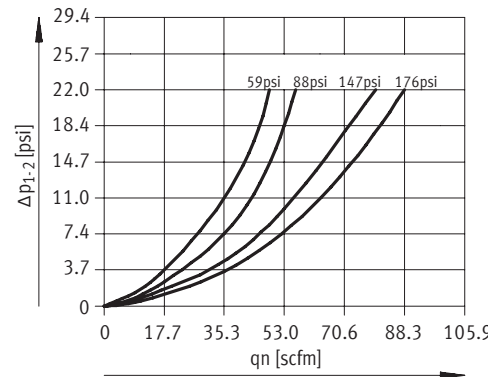
Technical Data

FESTO

Standard Flow Rate q_n as a Function of the Differential Pressure Δp_{1-2}		
	Filtration grade 5 μm	Filtration grade 40 μm
MS4N-LF-1/8		



MS4N-LF-1/4



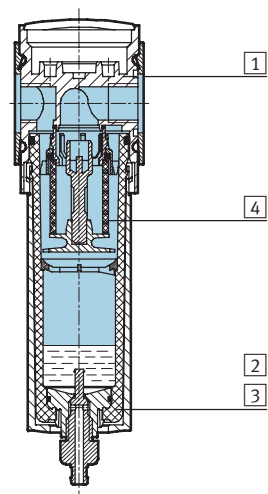
Standard Filters MS4N-LF – Inch Series

Technical Data



Materials

Sectional view

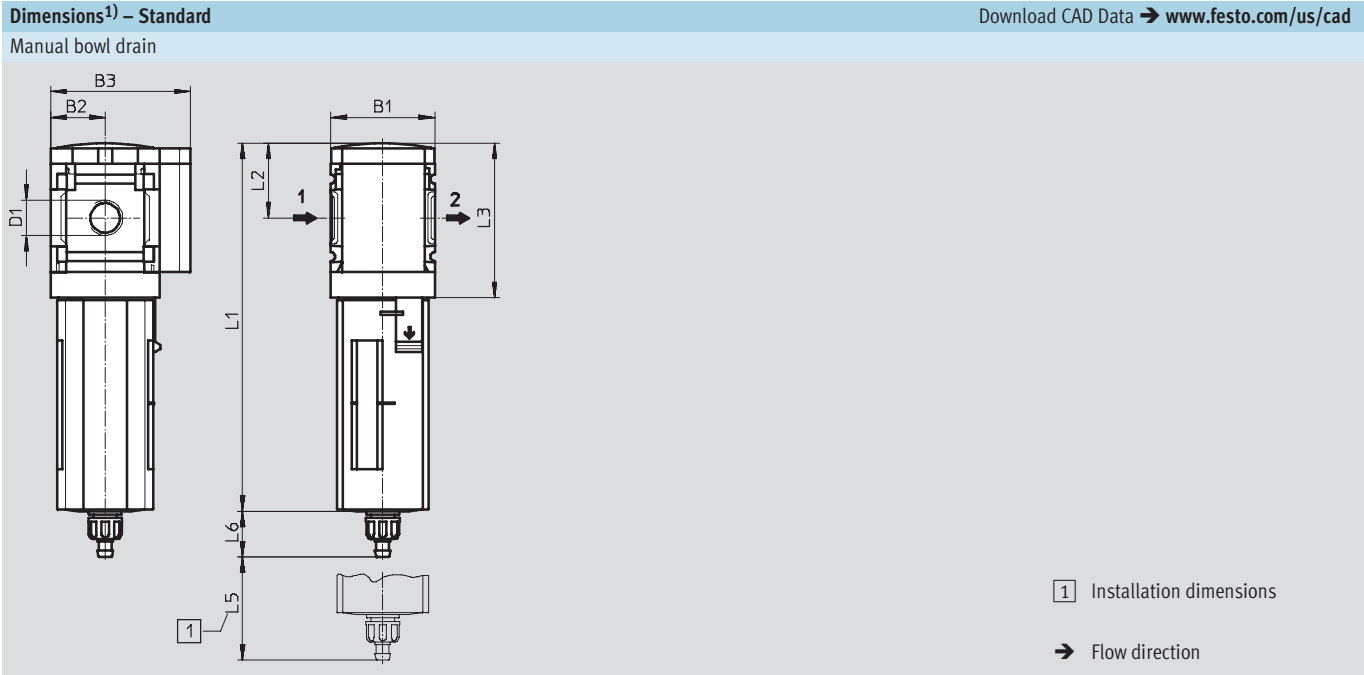


Filters		
1	Body	Die-cast aluminum
2	Plastic bowl guard	Polycarbonate/polyamide
3	Metal bowl	Aluminum
	Viewing window	Polyamide
4	Filter element	Polyethylene
-	Seals	Nitrile rubber
	Note on materials	Free of copper and PTFE

Standard Filters MS4N-LF – Inch Series

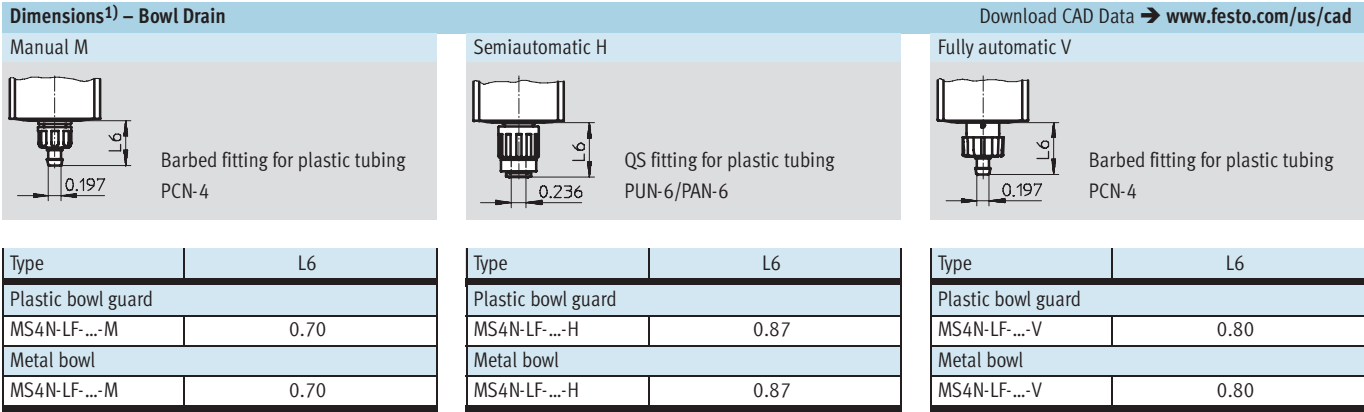
Dimensional Drawings

FESTO



Type	B1	B2	B3	D1	L1		L2	L3	L5	L6	
					Bowl guard					Bowl guard	
					Plastic	Metal				Plastic	Metal
MS4N-LF-1/8	1.57	0.83	2.13	1/8 NPT	5.62	6.28	1.14	2.38	0.98	0.70	0.70
MS4N-LF-1/4				1/4 NPT							

1) Dimensions are in inches, unless otherwise noted.



1) Dimensions are in inches, unless otherwise noted.

Standard Filters MS4N-LF – Inch Series

Ordering Data – Pre-configured Products

FESTO

Ordering Data								
Bowl drain	Connection	Filtration grade 5 µm				Filtration grade 40 µm		
		Part No.	Type		LT	Part No.	Type	LT
Plastic bowl guard								
Manual	1/8 NPT	531490	MS4N-LF-1/8-CRM		1D	531486	MS4N-LF-1/8-ERM	Q
	1/4 NPT	531489	MS4N-LF-1/4-CRM		1D	531485	MS4N-LF-1/4-ERM	Q
Fully automatic	1/8 NPT	531494	MS4N-LF-1/8-CRV		1D	531482	MS4N-LF-1/8-ERV	Q
	1/4 NPT	531493	MS4N-LF-1/4-CRV		1D	531481	MS4N-LF-1/4-ERV	Q
Metal bowl								
Manual	1/8 NPT	535670	MS4N-LF-1/8-CUM		Q	535676	MS4N-LF-1/8-EUM	Q
	1/4 NPT	535686	MS4N-LF-1/4-CUM		Q	535692	MS4N-LF-1/4-EUM	Q
Fully automatic	1/8 NPT	535672	MS4N-LF-1/8-CUV		Q	535674	MS4N-LF-1/8-EUV	Q
	1/4 NPT	535688	MS4N-LF-1/4-CUV		Q	535690	MS4N-LF-1/4-EUV	Q

LT = Lead time

1D typically ships same day/next day

1W typically ships within 1 week

Q request a quote for lead time

Standard Filters MS4N-LF – Inch Series

Ordering Data – Configurable Products

FESTO

M Mandatory Data →

Part No.	Series	Size	Thread	Function	Connection size	Filtration grade	Bowl
527696	MS	4	N	LF	1/8, 1/4, AQK, AQN, AQP	E C	R U
Order example							
527696	MS	4	N	- LF	- AQK	- E	- R

Ordering Table

Grid dimension	[mm]	40	Conditions	Code	Enter code
M Part No.		527696			
Series		Standard		MS	MS
Size		4		4	4
Thread		NPT thread		N	N
Function		Filters		-LF	-LF
Connection size	Body thread 1/8 NPT			-1/8	
	Body thread 1/4 NPT			-1/4	
	Port plate 1/8 NPT (dimensions → 236)			-AQK	
	Port plate 1/4 NPT (dimensions → 236)			-AQN	
	Port plate 3/8 NPT (dimensions → 236)			-AQP	
Filtration grade	40 µm			-E	
	5 µm			-C	
Bowl	Plastic bowl with plastic bowl guard			-R	
	Metal bowl			-U	

Transfer order code

527696	MS	4	N	- LF	-		-		-	
--------	----	---	---	------	---	--	---	--	---	--

Standard Filters MS4N-LF – Inch Series



Ordering Data – Configurable Products

→ M Mandatory Data		O Options	
Bowl drain		Type of mounting	Reverse flow direction
M H V		WP WPM WB WBM	Z
- M		- WP	- Z

Ordering Table					
Grid dimension	[mm]	40	Conditions	Code	Enter code
↓ M	Bowl drain	Manual		-M	
		Semiautomatic (P1 max. 176 psi)		-H	
		Fully automatic (P1 max. 176 psi)		-V	
O	Type of mounting	Mounting bracket (dimensions → 237)	1	-WP	
		Mounting bracket (dimensions → 237)	1	-WPM	
		Mounting bracket (dimensions → 234)		-WB	
		Mounting bracket (dimensions → 234)		-WBM	
	Reverse flow direction	Flow direction from right to left		-Z	

1 WP, WPM Only with port plate AQK, AQN or AQP

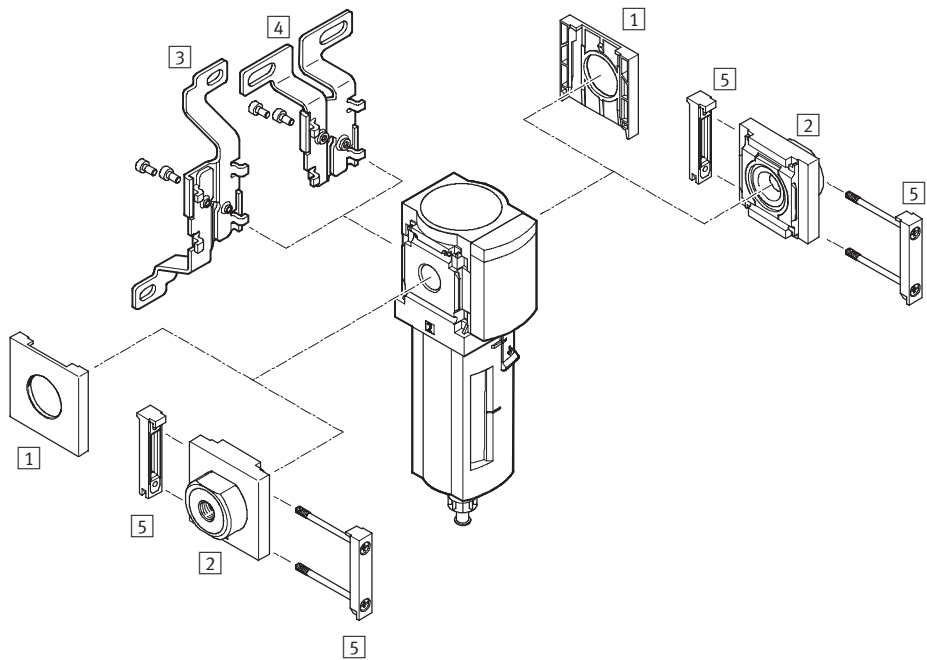
Transfer order code

-		-		-	
---	--	---	--	---	--

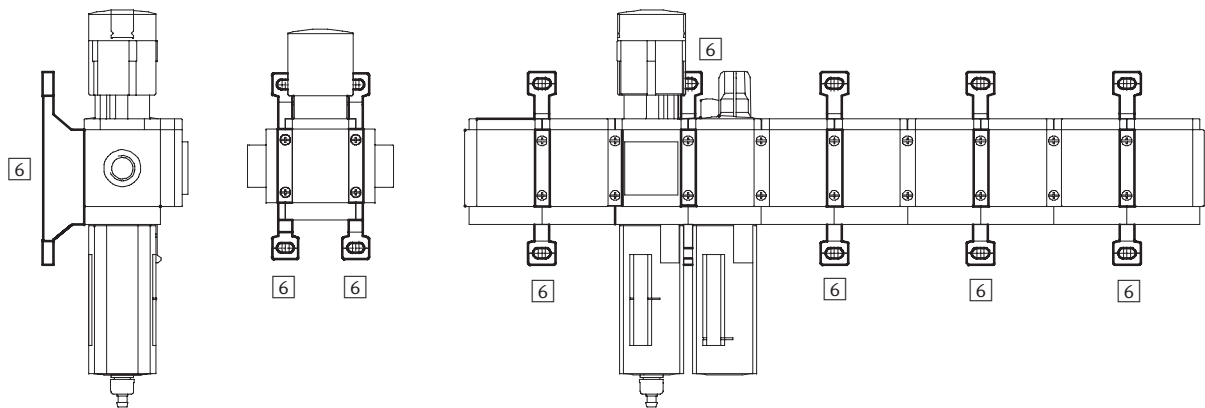
Standard Filters MS4N-LF – Inch Series

Accessories Overview

Mounting Attachments and Accessories



Single unit and combination unit mounting brackets.



Standard Filters MS4N-LF – Inch Series

Accessories Overview



Mounting Attachments and Accessories						
		Single unit		Combination unit → 2.1-49		→ Page
		without port plate	with port plate	without port plate	with port plate	
1	Cover cap MS4-END	■	–	■	–	235
2	Port plate MS4N-AQ...	–	■	–	■	236
3	Mounting bracket MS4-WB	■	■	–	–	234
4	Mounting bracket MS4-WBM	■	■	–	–	234
5	Body connector MS4-MV	–	■	■	■	236
6	Mounting bracket MS4-WP/WPB/WPM	–	■	■	■	237

Standard Filters MS4N-LF – Inch Series

Accessories

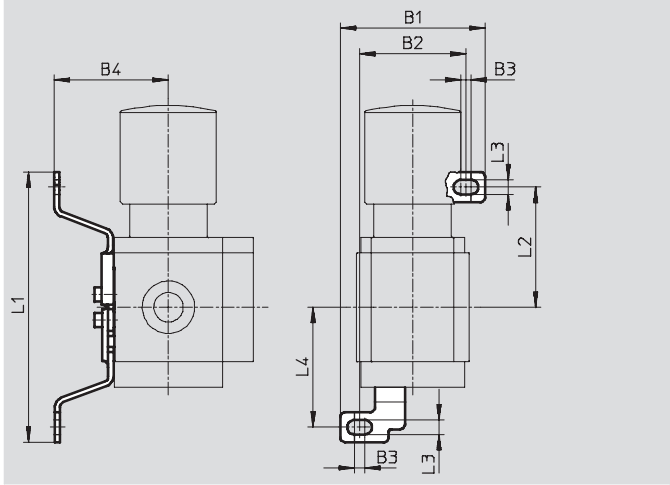
FESTO

3 Mounting bracket MS4-WB

- For wall mounting

Material:

Steel



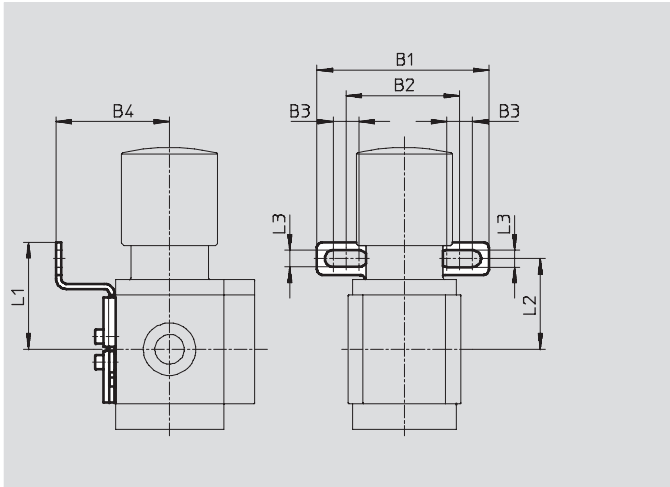
Dimensions and Ordering Data									
B1	B2	B3	B4	L1	L2	L3	L4	Weight [lb]	Part No. Type
2.21	1.62	0.16	1.74	4.12	1.83	0.22	1.79	0.09	532185 MS4-WB

4 Mounting bracket MS4-WBM

- For wall mounting

Material:

Steel



Dimensions and Ordering Data									
B1	B2	B3	B4	L1	L2	L3	Weight [lb]	Part No.	Type
2.62	1.73	0.39	1.73	1.63	1.38	0.26	0.10	526062	MS4-WBM

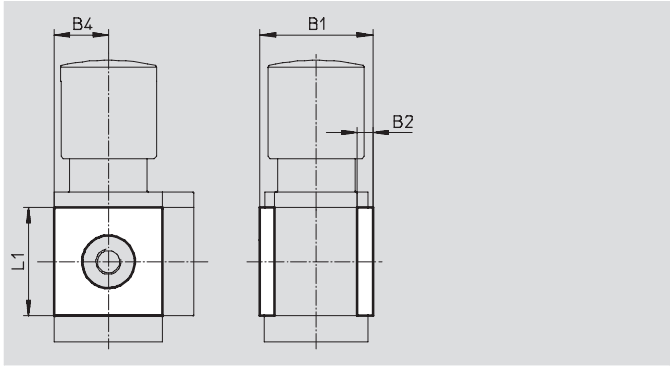
Standard Filters MS4N-LF – Inch Series

Accessories

1 Cover cap MS4-END

- Can be used to cover the body sides of the first and last module if port plates are not used.

Material:
Reinforced polyamide
Free of copper and PTFE

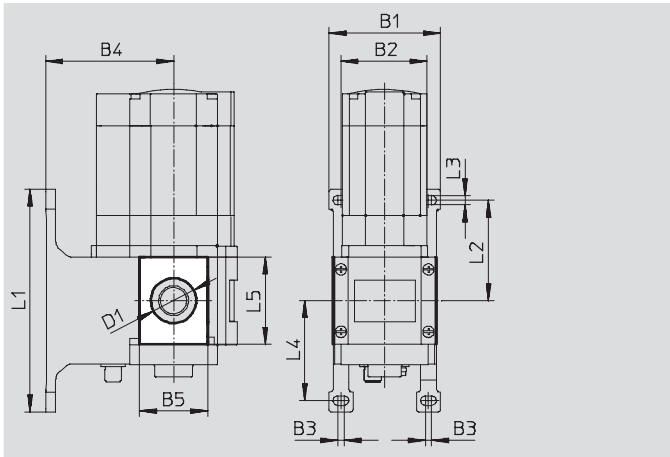


Dimensions and Ordering Data						
B1	B2	B4	L1	Part No.	Type	
1.72	0.24	0.83	1.65	538779	MS4-END	

Mounting plate MS4-AEND

- In combination with mounting bracket MS-WP or MS-WPB for mounting an individual unit with body thread on a wall

Material:
Reinforced polyamide
Conforms to RoHS
Free of copper and PTFE



Dimensions and Ordering Data															
B1	B2	B3	B4		B5	D1 Ø	L1	L2	L3	L4	L5	CRC ⁽¹⁾	Weight [lb]	Part No.	Type
			WP	WPB											
2.17	1.58	0.16	1.73	2.60	1.20	0.80	4.17	1.83	0.22	1.84	1.65	2	0.01	542966	MS4-AEND

1) Corrosion resistance class 2 according to Festo standard 940 070
Components requiring moderate corrosion resistance. Externally visible parts with primarily decorative surface requirements which are in direct contact with a normal industrial environment or media such as coolants or lubricating agents.

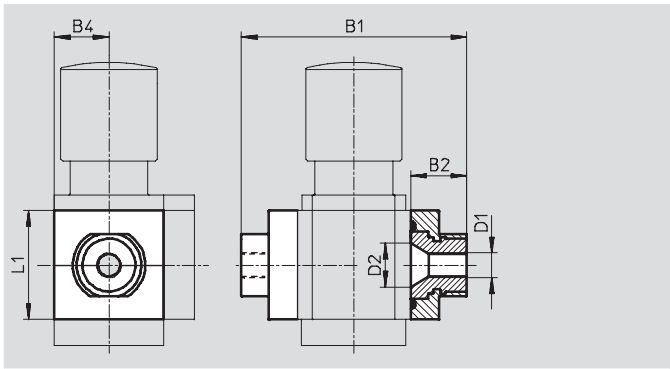
Standard Filters MS4N-LF – Inch Series

Accessories

2 Port plate MS4N-AQ...

- Adapter for pneumatic connection

Material:
Aluminum



Dimensions and Ordering Data								
B1	B2	B4	D1	D2	L1	Weight [lb]	Part No.	Type
3.29	0.85	0.83	1/8 NPT	0.66	1.65	0.26	526065	MS4N-AQK
			1/4 NPT				526066	MS4N-AQN
			3/8 NPT				526067	MS4N-AQP

5 Body connector MS4-MV

- For connecting modules

Material:
Stainless steel/polyacetate



Ordering Data		
Weight [lb]	Part No.	Type
0.07	532798	MS4-MV

Standard Filters MS4N-LF – Inch Series

Accessories

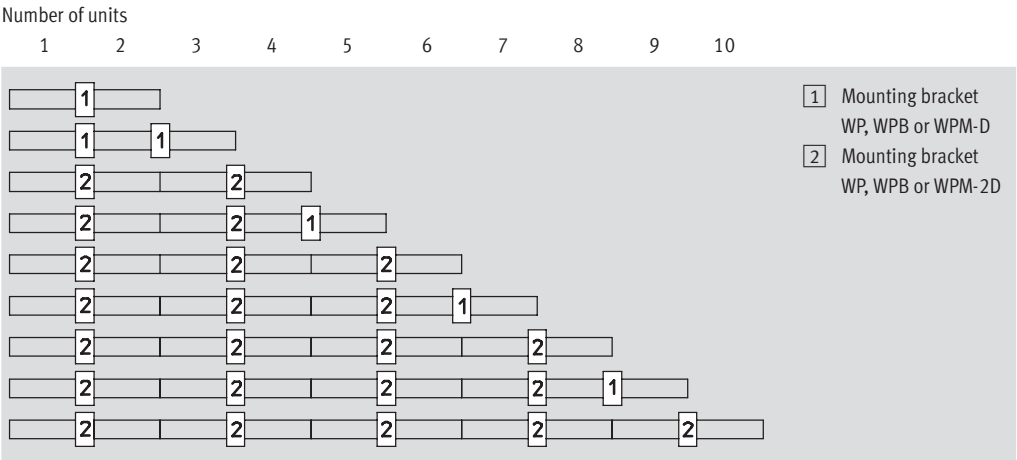
6

Mounting Bracket MS4-WP...

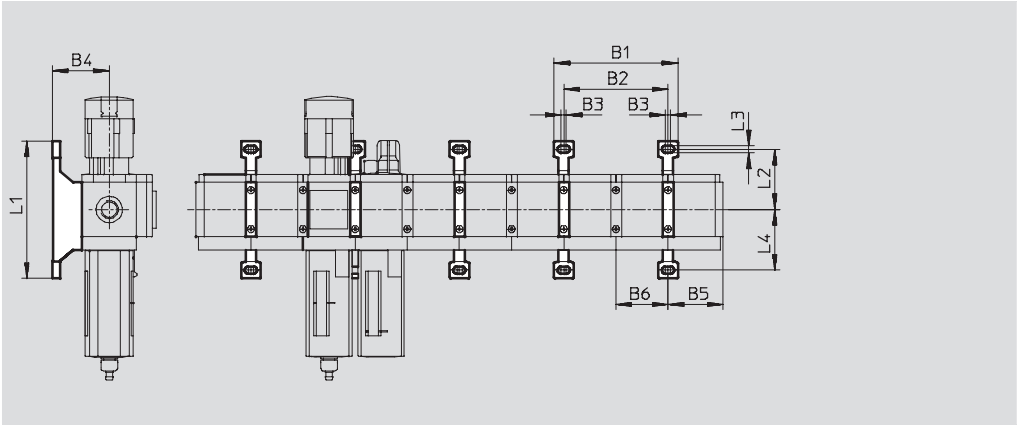
Suggested placement of wall mounting brackets when mounting air preparation combinations

1 unit: 1.575 in

2 units: 3.15 in



Mounting dimensions



Type	B1	B2	B3	B4	B5	B6	L1	L2	L3	L4
MS4-WP	3.75	3.15	0.16	1.73	1.65	1.57	4.17	1.83	0.22	1.84
MS4-WPB				2.60						
MS4-WPM-...D				1.73						1.57

Standard Filters MS4N-LF – Inch Series

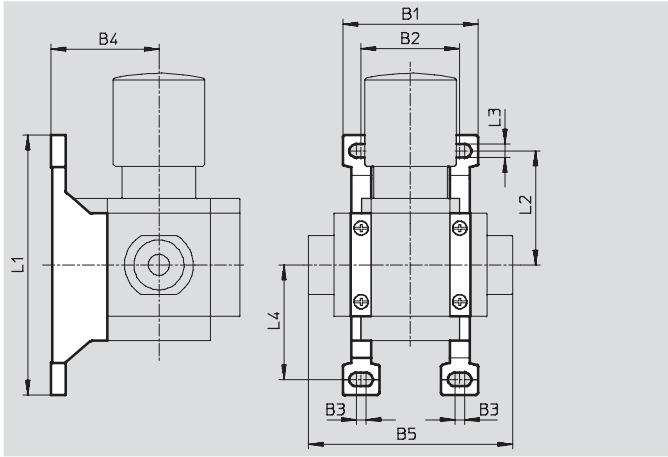
Accessories

Mounting bracket MS4-WP

- To connect the modules for wall mounting
- In combination with a port plate MS-AG... for mounting an individual unit on a wall
- In combination with mounting plate MS-AEND or for mounting an individual unit with body thread on a wall
- For pressure regulator LRB with angled outlet block B... at rear

Material:

Die-cast aluminum



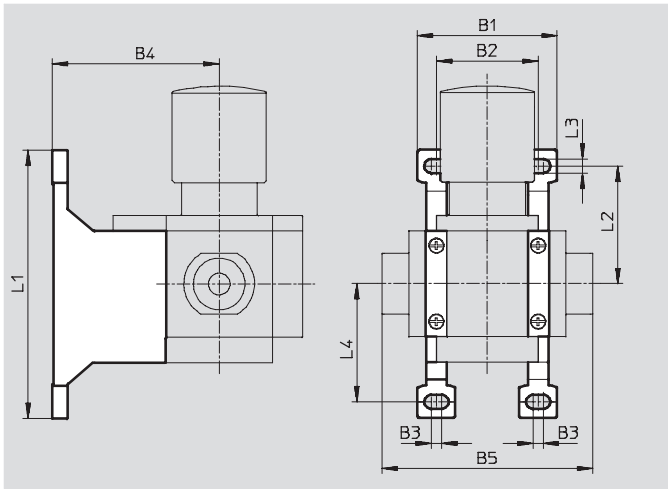
Dimensions and Ordering Data										Part No.	Type
B1	B2	B3	B4	B5	L1	L2	L3	L4	Weight [lb]		
2.17	1.58	0.16	1.73	3.28	4.17	1.83	0.22	1.84	0.08	532184	MS4-WP

Mounting bracket MS4-WPB

- To connect the modules for wall mounting
- In combination with a port plate MS-AG... for mounting an individual unit on a wall
- In combination with mounting plate MS-AEND or for mounting an individual unit with direct thread on a wall
- Provides large wall gap for pressure regulator

Material:

Die-cast aluminum



Dimensions and Ordering Data										Part No.	Type
B1	B2	B3	B4	B5	L1	L2	L3	L4	Weight [lb]		
2.17	1.58	0.16	2.60	3.28	4.17	1.83	0.22	1.84	0.11	526063	MS4-WPB

Standard Filters MS4N-LF – Inch Series

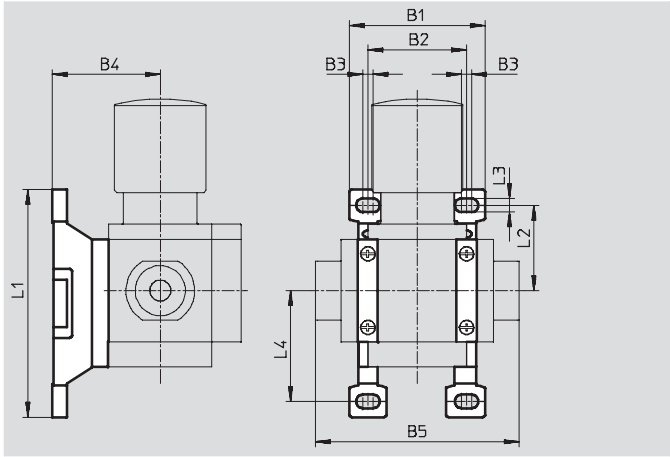
Accessories

Mounting bracket MS4-WPM

- To connect the modules for wall mounting
- In combination with a port plate MS-AG... for mounting an individual unit on a wall
- Speedy attachment and detachment
- For installation of modules with regulating knob pointing downwards

The distance piece D or 2D (designated in the type code) is included in the scope of delivery and ensures the correct clearance

Material:
Die-cast aluminum



Dimensions and Ordering Data												
B1	B2	B3	B4	B5	L1	L2	L3	L4	Clearance	Weight [lb]	Part No.	Type
2.17	1.57	0.16	1.73	3.28	3.65	1.37	0.22	1.78	1.57	0.09	526060	MS4-WPM-D
3.75	3.15			4.86					3.15	0.11	526061	MS4-WPM-2D

Body connector MS4-MVM

- For installation of modules with regulating knob pointing downwards

Material:
Die-cast aluminum



Ordering Data		
Size	Part No.	Type
MS4	532800	MS4-MVM

Standard Filters MS4N-LF – Inch Series

Replacement Parts

FESTO

Ordering Data – Wearing Parts Kits			
Size	Description	Part No.	Type
MS4	O-rings, screws, sealing ring	673639	MS4-LF



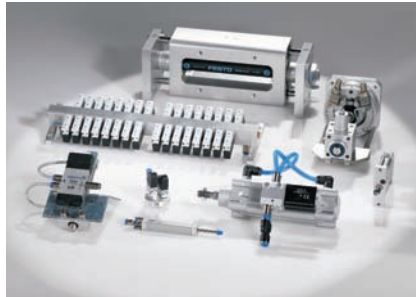
Ordering Data – Filter Cartridges			
Size	Filtration grade [µm]	Part No.	Type
MS4	5	534501	MS4-LFP-C
	40	534502	MS4-LFP-E

- For spare parts go to: www.festo.com/en/spare_parts_service

Product Range and Company Overview

A Complete Suite of Automation Services

Our experienced engineers provide complete support at every stage of your development process, including: conceptualization, analysis, engineering, design, assembly, documentation, validation, and production.



Custom Automation Components

Complete custom engineered solutions



Custom Control Cabinets

Comprehensive engineering support and on-site services



Complete Systems

Shipment, stocking and storage services

The Broadest Range of Automation Components

With a comprehensive line of more than 30,000 automation components, Festo is capable of solving the most complex automation requirements.



Electromechanical

Electromechanical actuators, motors, controllers & drives



Pneumatics

Pneumatic linear and rotary actuators, valves, and air supply



PLCs and I/O Devices

PLC's, operator interfaces, sensors and I/O devices

Supporting Advanced Automation... As No One Else Can!

Festo is a leading global manufacturer of pneumatic and electromechanical systems, components and controls for industrial automation, with more than 11,500 employees in 56 national headquarters serving more than 180 countries. For more than 80 years, Festo has continuously elevated the state of manufacturing with innovations and optimized motion control solutions that deliver higher performing, more profitable automated manufacturing and processing equipment. Our dedication to the advancement of automation extends beyond technology to the education and development of current and future automation and robotics designers with simulation tools, teaching programs, and on-site services.

Quality Assurance, ISO 9001 Certification

Festo Corporation is committed to provide Festo products and services that will meet or exceed our customers' requirements in product quality, delivery, customer service and satisfaction.

All Festo locations within the United States are registered to ISO 9001.



Festo North America

United States

Customer Resource Center

502 Earth City Expy., Suite 125
Earth City, MO 63045

For ordering assistance, or to find
your nearest Festo Distributor,

Call: 1.800.99.FESTO

Fax: 1.800.96.FESTO

Email: customer.service@us.festo.com

For technical support,

Call: 1.866.GO.FESTO

Fax: 1.800.96.FESTO

Email: product.support@us.festo.com

Headquarters

Festo Corporation
395 Moreland Road
P.O. Box 18023
Hauppauge, NY 11788
www.festo.com/us

Sales Offices

Appleton

N. 922 Tower View Drive, Suite N
Greenville, WI 54942

Boston

120 Presidential Way, Suite 330
Woburn, MA 01801

Chicago

1441 East Business Center Drive
Mt. Prospect, IL 60056

Dallas

1825 Lakeway Drive, Suite 600
Lewisville, TX 75057

Detroit - Automotive Engineering Center

2601 Cambridge Court, Suite 320
Auburn Hills, MI 48326

New York

395 Moreland Road
Hauppauge, NY 11788

Silicon Valley

2800 Collier Canyon Road
Livermore, CA 94550

Design and Manufacturing Operations



East: 395 Moreland Road, Hauppauge, NY 11788



Central: 1441 East Business Center Drive, Mt. Prospect, IL 60056



West: 2800 Collier Canyon Road, Livermore, CA 94550

Mexico

Headquarters

Festo Pneumatic, S.A.
Av. Ceylán 3, Col. Tequesquahuac
54020 Tlalnepantla, Edo. de México
Call: 011 52 [55] 53 21 66 00
Fax: 011 52 [55] 53 21 66 65
Email: festo.mexico@mx.festo.com
www.festo.com/mx



Canada

Headquarters

Festo Inc.
5300 Explorer Drive
Mississauga, Ontario L4W 5G4
Call: 1.905.624.9000
Fax: 1.905.624.9001
Email: info.ca@ca.festo.com
www.festo.com/ca



Festo Worldwide

Argentina Australia Austria Belarus Belgium Brazil Bulgaria Canada Chile China Colombia Croatia Czech Republic Denmark
Estonia Finland France Germany Great Britain Greece Hong Kong Hungary India Indonesia Iran Ireland Israel Italy Japan
Latvia Lithuania Malaysia Mexico Netherlands New Zealand Norway Peru Philippines Poland Romania Russia Serbia Singapore
Slovakia Slovenia South Africa South Korea Spain Sweden Switzerland Taiwan Thailand Turkey Ukraine United States Venezuela

www.festo.com