

Active Carbon Filters MS4-LFX – Metric Series



Active carbon filters remove liquid and gaseous oil particles as well as odor and taste from compressed air. Pre-filtration with a grade of 0.01 micron is required.

- Pneumatic connection: G¹/₈, G¹/₄, G³/₈
- Supply pressure 0 ... 14 bar
- Flow rate: 250 l/min

| Product Range Overview | | | | | | | | | | | |
|------------------------|---|---|-----------------------|---|---|----|--------------------|------------|------------|-----------------------|--------------|
| Type | Pneumatic connections | | Filtration grade [µm] | | | | Bowl guard | | Bowl drain | Contamination control | Reverse flow |
| | Body thread | Port plate | 0.01 | 1 | 5 | 40 | Plastic bowl guard | Metal bowl | | | |
| MS4 | | AG... | A | B | C | E | R | U | M | DA | Z |
| LFX | G ¹ / ₈ , G ¹ / ₄ | G ¹ / ₈ , G ¹ / ₄ , G ³ / ₈ | - | - | - | - | ■ | ■ | ■ | - | ■ |

Features

- Removal of liquid and gaseous oil particles from compressed air using active carbon
- Eliminates odors and vapors
- Prefiltration with micro filter MS4-LFM-A, filtration grade 0.01 µm, is required.

Contents

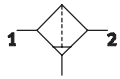
| | |
|----------------------|-------|
| Technical Data | → 278 |
| Dimensional Drawings | → 280 |
| Ordering Data | → 280 |
| Accessories | → 282 |
| Replacement Parts | → 290 |

→ www.festo.com/catalog/ms4-lfx

Active Carbon Filters MS4-LFX – Metric Series

Technical Data

ISO Symbol



Manual bowl drain



| General Technical Data | | |
|--|-------------------------|-----------------|
| Pneumatic connection 1, 2 | G $\frac{1}{8}$ | G $\frac{1}{4}$ |
| Air purity class at the output ¹⁾ | 1.7.1 to DIN ISO 8573-1 | |
| Supply pressure [bar] | 0 ... 14 | |

1) It is recommended to replace filter cartridges after 1,000 operating hours.

Note: This product conforms with the ISO 1179-1 standard and the ISO 228-1 standard.

| Standard Nominal Flow Rate $q_{nN}^{2)}$ and Standard Flow Rate q_n [l/min] | | |
|---|-----------------|-----------------|
| Pneumatic connection 1, 2 | G $\frac{1}{8}$ | G $\frac{1}{4}$ |
| q_{nN} 1 \rightarrow 2 | 250 | 250 |
| q_n max | 360 | 360 |

2) Measured at $p_1 = 6$ bar and $\Delta p = 70$ mbar

| Operating and Environmental Conditions | |
|--|---|
| Operating medium | Compressed air, filtered, unlubricated, filtration grade 0.01 μ m |
| Bowl guard | Plastic bowl guard |
| | Metal bowl |
| Ambient temperature [°C] | -10 ... +60 |
| Temperature of medium [°C] | +5 ... +30 |
| Storage temperature [°C] | -10 ... +60 |
| Assembly position | Vertical $\pm 5^\circ$ |
| Corrosion resistance CRC ³⁾ | 2 |

3) Corrosion resistance class 2 according to Festo standard 940 070
Components requiring moderate corrosion resistance. Externally visible parts with primarily decorative surface requirements which are in direct contact with a normal industrial environment or media such as coolants or lubricating agents.

| Weights [g] | |
|-------------------------|-----|
| With plastic bowl guard | 190 |
| With metal bowl | 350 |

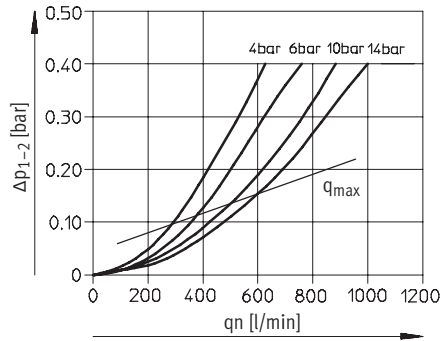
- Filter cartridges \rightarrow 290
- For spare parts go to: www.festo.com/en/spare_parts_service

Active Carbon Filters MS4-LFX – Metric Series

Technical Data

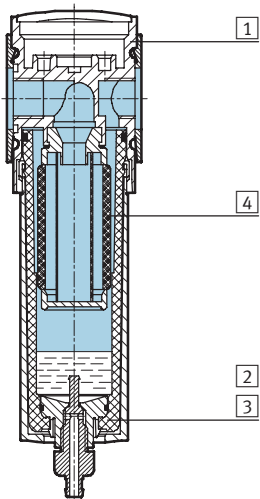
Standard Flow Rate q_n as a Function of the Differential Pressure Δp_{1-2}

MS4-LFX-1/8 and MS4-LFX-1/4



Materials

Sectional view



| Active carbon filter | | |
|----------------------|--------------------|-------------------------|
| 1 | Body | Die-cast aluminum |
| 2 | Plastic bowl guard | Polycarbonate/polyamide |
| 3 | Metal bowl | Aluminum |
| | Viewing window | Polyamide |
| 4 | Filters | Active carbon |
| - | Seals | Nitrile rubber |
| | Note on materials | Free of copper and PTFE |

Active Carbon Filters MS4-LFX – Metric Series

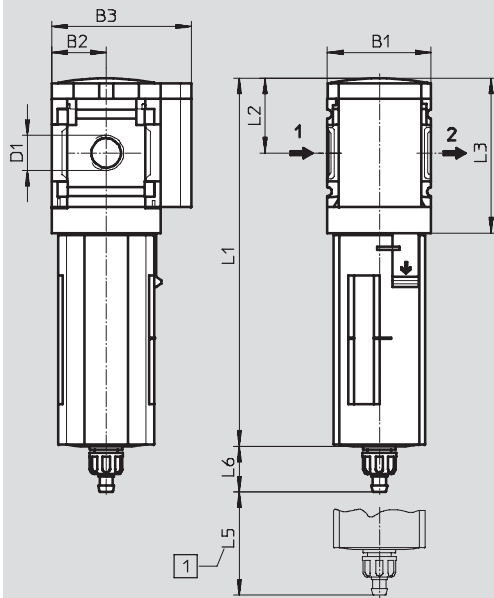


Dimensional Drawings, Ordering Data – Pre-configured Products

Dimensions¹⁾ – Standard

Download CAD Data → www.festo.com/us/cad

Manual bowl drain



1 Installation dimensions

→ Flow direction

| Type | B1 | B2 | B3 | D1 | L1 | | L2 | L3 | L5 | L6 | |
|-------------|------|----|----|------|------------|-------|----|----|----|---------|-------|
| | | | | | Bowl guard | | | | | Plastic | Metal |
| | | | | | Plastic | Metal | | | | | |
| MS4-LFX-1/8 | 40.2 | 21 | 54 | G1/8 | 142.8 | 160.4 | 29 | 60 | 75 | 17.7 | 18 |
| MS4-LFX-1/4 | | | | G1/4 | | | | | | | |

1) Dimensions are in millimeters, unless otherwise noted.

Note: This product conforms with the ISO 1179-1 standard and the ISO 228-1 standard.

Ordering Data

| Bowl drain | Connection | Plastic bowl guard | | | Metal bowl | | |
|------------|------------|--------------------|---------------|----|------------|---------------|----|
| | | Part No. | Type | LT | Part No. | Type | LT |
| Manual | G1/8 | 536707 | MS4-LFX-1/8-R | 1D | 536709 | MS4-LFX-1/8-U | Q |
| | G1/4 | 529467 | MS4-LFX-1/4-R | 1D | 535782 | MS4-LFX-1/4-U | Q |

LT = Lead time

1D typically ships same day/next day

1W typically ships within 1 week

Q request a quote for lead time

Active Carbon Filters MS4-LFX – Metric Series



Ordering Data – Configurable Products

| M Mandatory Data | | | | | | O Options | |
|----------------------|-----------|----------|--------------|-------------------------|------------|------------------------|------------------------|
| Part No. | Series | Size | Function | Connection size | Bowl | Type of mounting | Reverse flow direction |
| 527699 | MS | 4 | LFX | 1/8, 1/4, AGA, AGB, AGC | R U | WP WPM WB WBM | Z |
| Order example | | | | | | | |
| 527699 | MS | 4 | - LFX | - AGB | - R | - WP | - Z |

| Ordering Table | | Grid dimension [mm] | 40 | Conditions | Code | Enter code |
|----------------|------------------------|--------------------------------------|----|------------|------|------------|
| M | Part No. | 527699 | | | | |
| | Series | Standard | | | MS | MS |
| | Size | 4 | | | 4 | 4 |
| | Function | Activated carbon filter | | | -LFX | -LFX |
| | Connection size | Body thread G1/8 | | | -1/8 | |
| | | Body thread G1/4 | | | -1/4 | |
| | | Port plate G1/8 (dimensions → 286) | | | -AGA | |
| | | Port plate G1/4 (dimensions → 286) | | | -AGB | |
| | | Port plate G3/8 (dimensions → 286) | | | -AGC | |
| | Bowl | Plastic bowl with plastic bowl guard | | | -R | |
| | | Metal bowl | | | -U | |
| O | Type of mounting | Mounting bracket (dimensions → 287) | | 1 | -WP | |
| | | Mounting bracket (dimensions → 287) | | 1 | -WPM | |
| | | Mounting bracket (dimensions → 284) | | | -WB | |
| | | Mounting bracket (dimensions → 284) | | | -WBM | |
| | Reverse flow direction | Flow direction from right to left | | | -Z | |

1 WP, WPM Only with port plate AGA, AGB or AGC

Transfer order code

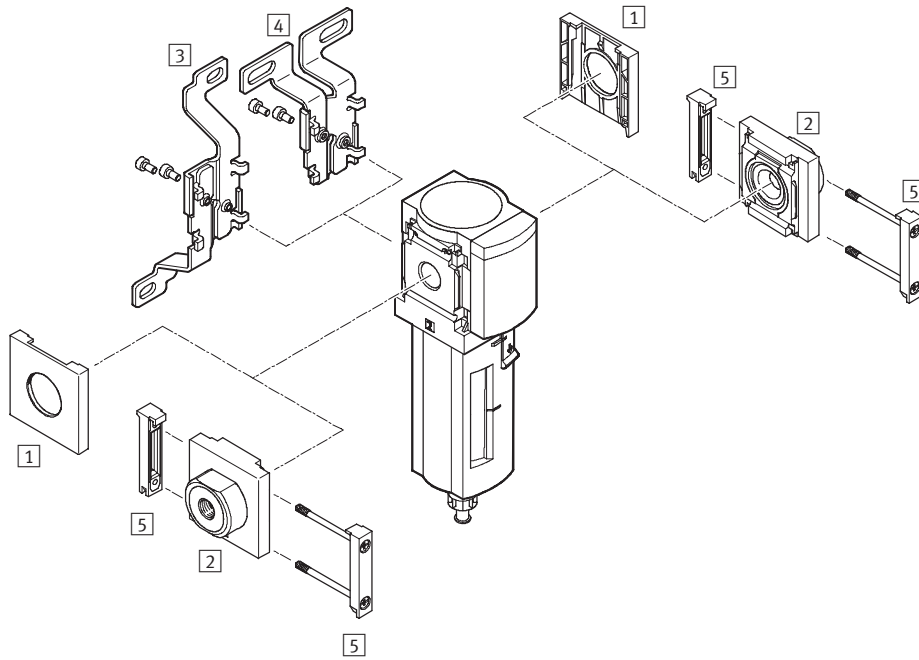
| | | | | | | | | |
|--------|----|---|-------|---|---|---|---|---|
| 527699 | MS | 4 | - LFX | - | - | - | - | - |
|--------|----|---|-------|---|---|---|---|---|

Active Carbon Filters MS4-LFX – Metric Series

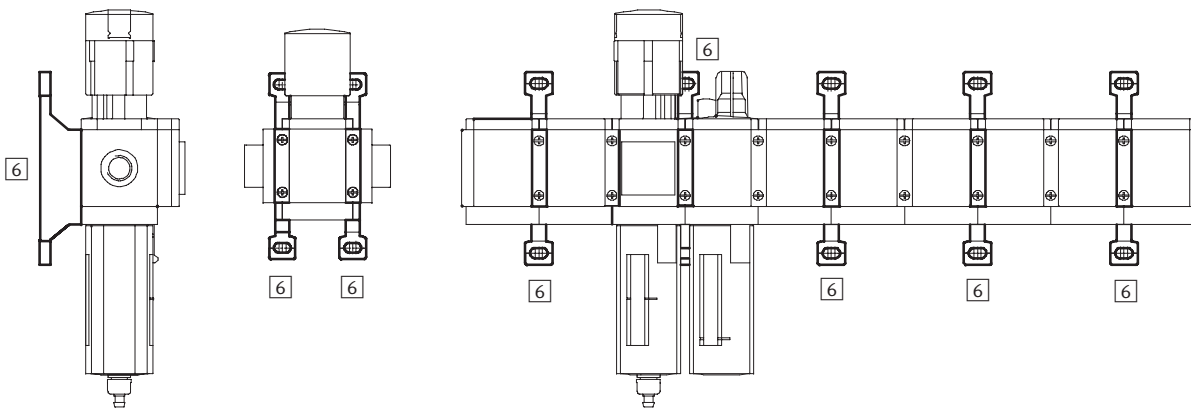
Accessories Overview



Mounting Attachments and Accessories



Single unit and combination unit mounting brackets.



Active Carbon Filters MS4-LFX – Metric Series

Accessories Overview

FESTO

| Mounting Attachments and Accessories | | | | | | |
|--------------------------------------|------------------------------------|--------------------|-----------------|--------------------------|-----------------|--------|
| | | Single unit | | Combination unit → 2.1-1 | | → Page |
| | | without port plate | with port plate | without port plate | with port plate | |
| 1 | Cover cap MS4-END | ■ | - | ■ | - | 285 |
| 2 | Port plate MS4-AG... | - | ■ | - | ■ | 286 |
| 3 | Mounting bracket MS4-WB | ■ | ■ | - | - | 284 |
| 4 | Mounting bracket MS4-WBM | ■ | ■ | - | - | 284 |
| 5 | Body connector MS4-MV | - | ■ | ■ | ■ | 286 |
| 6 | Mounting bracket MS4-WP/WPB/WPM | - | ■ | ■ | ■ | 287 |

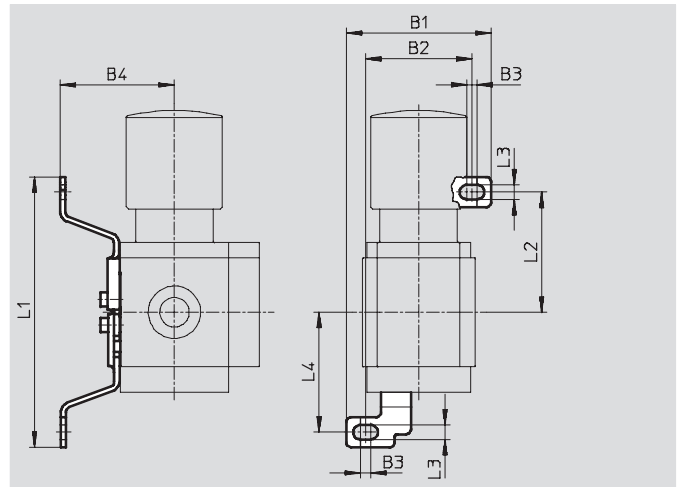
Active Carbon Filters MS4-LFX – Metric Series

Accessories

3 Mounting bracket MS4-WB

- For wall mounting

Material:
Steel

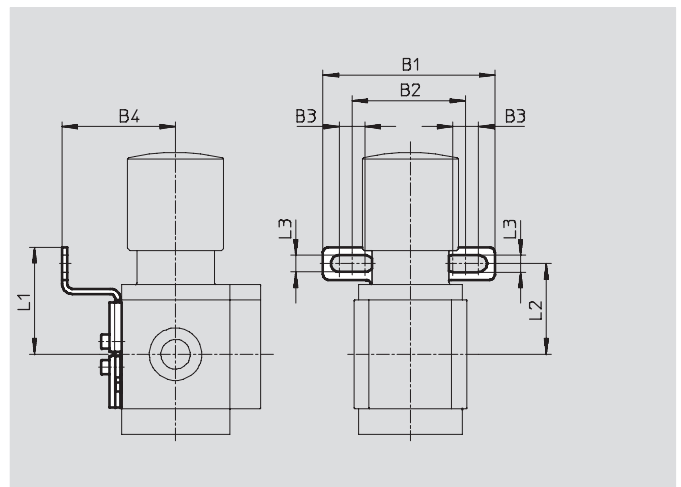


| Dimensions and Ordering Data | | | | | | | | | | |
|------------------------------|------|----|------|-------|------|-----|------|------------|----------|--------|
| B1 | B2 | B3 | B4 | L1 | L2 | L3 | L4 | Weight [g] | Part No. | Type |
| 56.2 | 41.2 | 4 | 44.2 | 104.6 | 46.6 | 5.6 | 46.5 | 46 | 532185 | MS4-WB |

4 Mounting bracket MS4-WBM

- For wall mounting

Material:
Steel



| Dimensions and Ordering Data | | | | | | | | | |
|------------------------------|----|----|----|------|----|-----|------------|----------|---------|
| B1 | B2 | B3 | B4 | L1 | L2 | L3 | Weight [g] | Part No. | Type |
| 66.5 | 44 | 10 | 44 | 41.3 | 35 | 6.5 | 48 | 526062 | MS4-WBM |

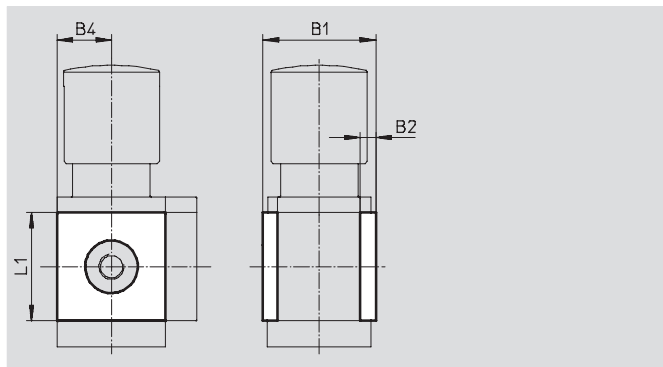
Active Carbon Filters MS4-LFX – Metric Series

Accessories

1 Cover cap MS4-END

- Can be used to cover the body sides of the first and last module if port plates are not used.

Material:
Reinforced polyamide
Free of copper and PTFE

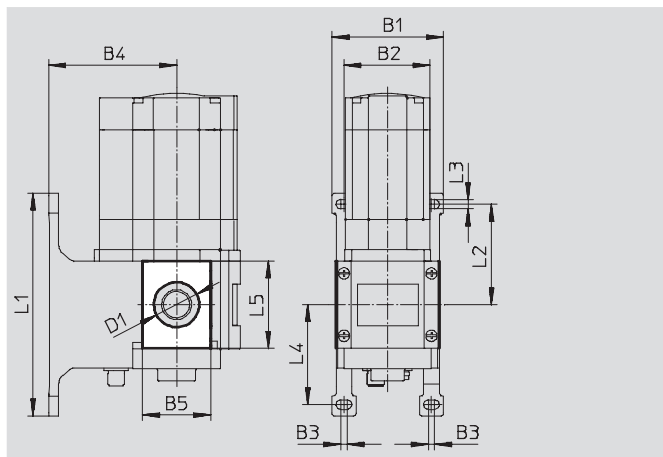


| Dimensions and Ordering Data | | | | | | |
|------------------------------|----|----|----|----------|---------|--|
| B1 | B2 | B4 | L1 | Part No. | Type | |
| 43.6 | 6 | 21 | 42 | 538779 | MS4-END | |

Mounting plate MS4-AEND

- In combination with mounting bracket MS-WP or MS-WPB for mounting an individual unit with body thread on a wall

Material:
Reinforced polyamide
Conforms to RoHS
Free of copper and PTFE



| Dimensions and Ordering Data | | | | | | | | | | | | | | | |
|------------------------------|------|----|----|-----|------|---------|-----|------|-----|------|----|-------------------|---------------|----------|----------|
| B1 | B2 | B3 | B4 | | B5 | D1 ∅ | L1 | L2 | L3 | L4 | L5 | CRC ¹⁾ | Weight [g] | Part No. | Type |
| | | | WP | WPB | | | | | | | | | | | |
| 55.2 | 40.2 | 4 | 44 | 66 | 30.4 | 20.3 | 106 | 46.5 | 5.6 | 46.7 | 42 | 2 | 4 | 542966 | MS4-AEND |

1) Corrosion resistance class 2 according to Festo standard 940 070
Components requiring moderate corrosion resistance. Externally visible parts with primarily decorative surface requirements which are in direct contact with a normal industrial environment or media such as coolants or lubricating agents.

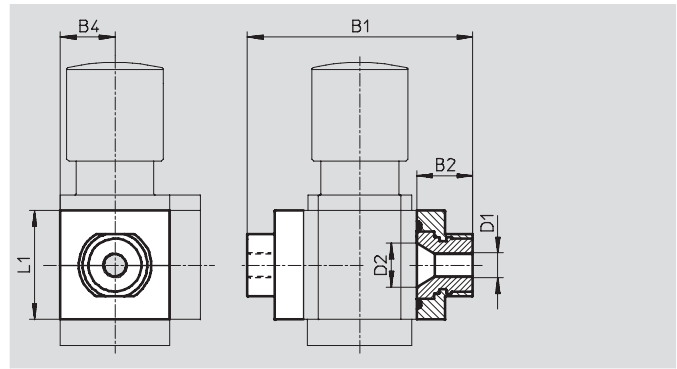
Active Carbon Filters MS4-LFX – Metric Series

Accessories

2 Port plate MS4-AG...

- Adapter for pneumatic connection

Material:
Aluminum



| Dimensions and Ordering Data | | | | | | | |
|------------------------------|------|----|-----------------|------|----|------------|----------------|
| B1 | B2 | B4 | D1 | D2 | L1 | Weight [g] | Part No. Type |
| 83.5 | 21.5 | 21 | G $\frac{1}{8}$ | 16.8 | 42 | 128 | 526068 MS4-AGA |
| | | | G $\frac{1}{4}$ | | | | 526069 MS4-AGB |
| | | | G $\frac{3}{8}$ | | | | 526070 MS4-AGC |

5 Body connector MS4-MV

- For connecting modules

Material:
Stainless steel/polyacetate



| Ordering Data | |
|---------------|---------------|
| Weight [g] | Part No. Type |
| 36 | 532798 MS4-MV |

Active Carbon Filters MS4-LFX – Metric Series

Accessories

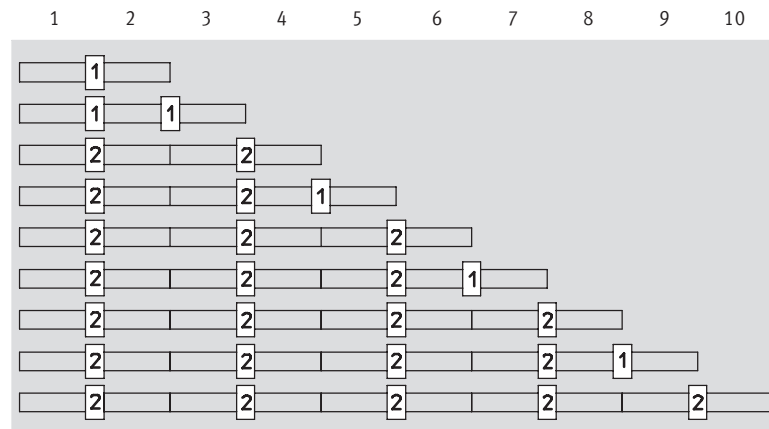
6 Mounting Bracket MS4-WP...

Suggested placement of wall mounting brackets when mounting air preparation combinations

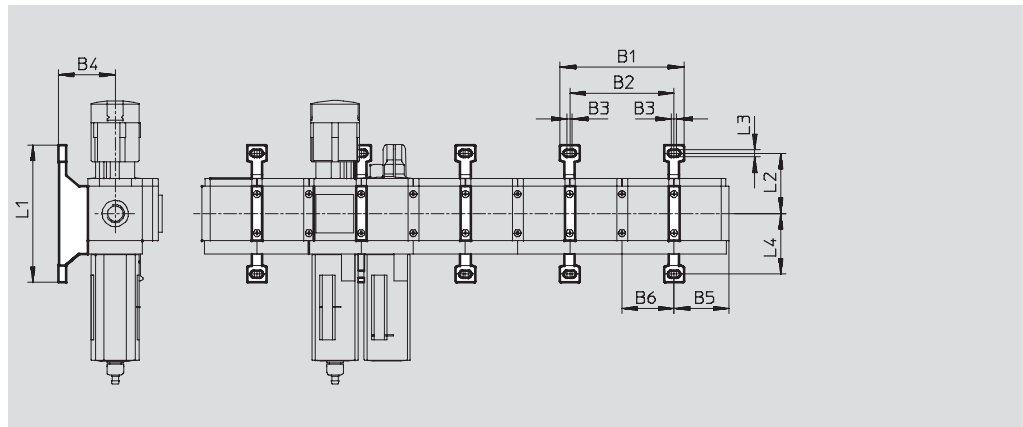
1 unit: 40 mm

2 units: 80 mm

Number of units



Mounting dimensions



| Type | B1 | B2 | B3 | B4 | B5 | B6 | L1 | L2 | L3 | L4 |
|--------------|------|----|----|----|------|----|-----|------|-----|------|
| MS4-WP | 95.2 | 80 | 4 | 44 | 41.9 | 40 | 106 | 46.5 | 5.6 | 46.7 |
| MS4-WPB | | | | 66 | | | | | | |
| MS4-WPM-...D | | | | 44 | | | | | | |

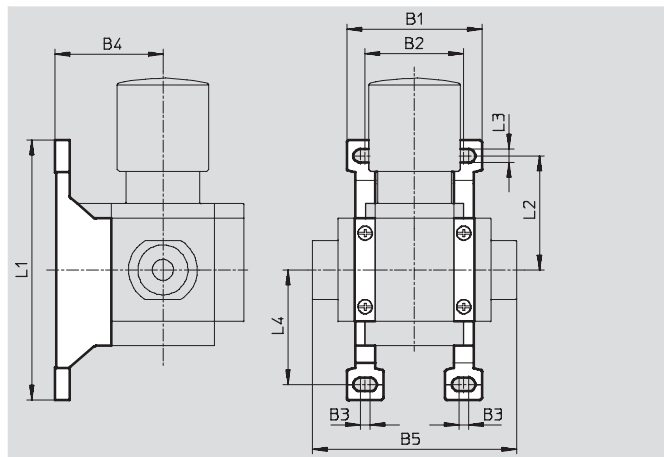
Active Carbon Filters MS4-LFX – Metric Series



Accessories

Mounting bracket MS4-WP

- To connect the modules for wall mounting
- In combination with a port plate MS-AG... for mounting an individual unit on a wall
- In combination with mounting plate MS-AEND or for mounting an individual unit with body thread on a wall
- For pressure regulator LRB with angled outlet block B... at rear

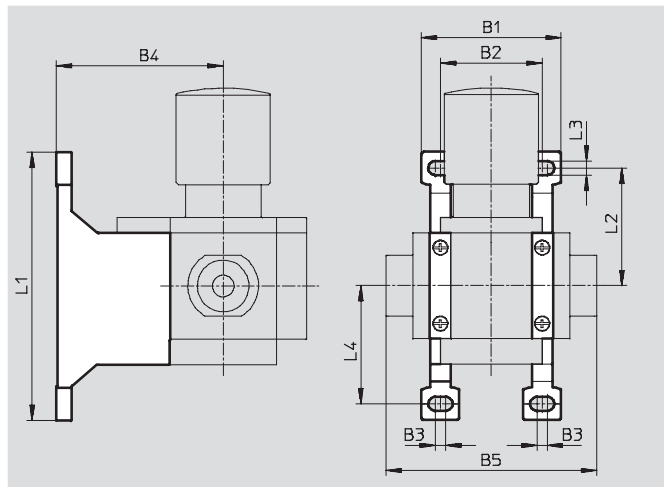


Material:
Die-cast aluminum

| Dimensions and Ordering Data | | | | | | | | | | | |
|------------------------------|------|----|----|------|-----|------|-----|------|------------|----------|--------|
| B1 | B2 | B3 | B4 | B5 | L1 | L2 | L3 | L4 | Weight [g] | Part No. | Type |
| 55.2 | 40.2 | 4 | 44 | 83.4 | 106 | 46.5 | 5.6 | 46.7 | 39 | 532184 | MS4-WP |

Mounting bracket MS4-WPB

- To connect the modules for wall mounting
- In combination with a port plate MS-AG... for mounting an individual unit on a wall
- In combination with mounting plate MS-AEND or for mounting an individual unit with direct thread on a wall
- Provides large wall gap for pressure regulator



Material:
Die-cast aluminum

| Dimensions and Ordering Data | | | | | | | | | | | |
|------------------------------|------|----|----|------|-----|------|-----|------|------------|----------|---------|
| B1 | B2 | B3 | B4 | B5 | L1 | L2 | L3 | L4 | Weight [g] | Part No. | Type |
| 55.2 | 40.2 | 4 | 66 | 83.4 | 106 | 46.5 | 5.6 | 46.7 | 55 | 526063 | MS4-WPB |

Active Carbon Filters MS4-LFX – Metric Series

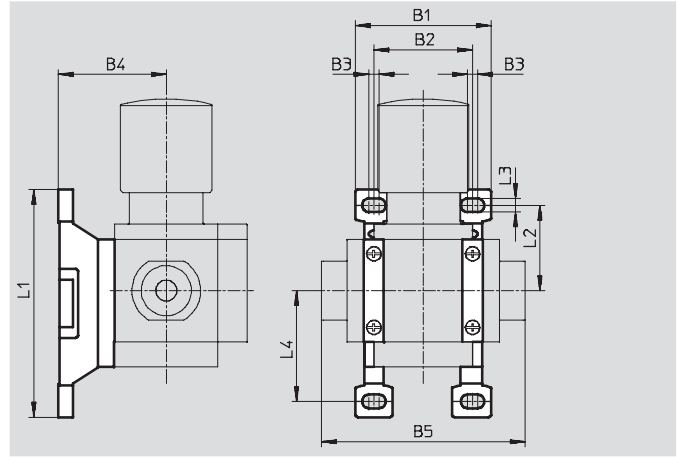
Accessories

Mounting bracket MS4-WPM

- To connect the modules for wall mounting
- In combination with a port plate MS-AG... for mounting an individual unit on a wall
- Speedy attachment and detachment
- For installation of modules with regulating knob pointing downwards

The distance piece D or 2D (designated in the type code) is included in the scope of delivery and ensures the correct clearance

Material:
Die-cast aluminum



| Dimensions and Ordering Data | | | | | | | | | | | | |
|------------------------------|----|----|----|-------|------|------|-----|------|-----------|------------|----------|------------|
| B1 | B2 | B3 | B4 | B5 | L1 | L2 | L3 | L4 | Clearance | Weight [g] | Part No. | Type |
| 55.2 | 40 | 4 | 44 | 83.4 | 92.8 | 34.8 | 5.6 | 45.2 | 40 | 45 | 526060 | MS4-WPM-D |
| 95.2 | 80 | | | 123.4 | | | | | 80 | 55 | 526061 | MS4-WPM-2D |

Body connector MS4-MVM

- For installation of modules with regulating knob pointing downwards

Material:
Die-cast aluminum



| Ordering Data | | |
|---------------|----------|---------|
| Size | Part No. | Type |
| MS4 | 532800 | MS4-MVM |

Active Carbon Filters MS4-LFX – Metric Series

Replacement Parts

FESTO



| Ordering Data – Filter Cartridges | | | |
|-----------------------------------|--|----------|----------------|
| Size | Filtration grade [µm] | Part No. | Type |
| MS4 | Residual oil content $\leq 0.003 \text{ mg/m}^3$ | 532912 | MS4/D-MINI-LFX |

- For spare parts go to: www.festo.com/en/spare_parts_service

Active Carbon Filters MS4N-LFX – Inch Series



Active carbon filters remove liquid and gaseous oil particles as well as odor and taste from compressed air. Pre-filtration with a grade of 0.01 micron is required.

- Pneumatic connection: 1/8 NPT, 1/4 NPT, 3/8 NPT
- Supply pressure 0 ... 235 psi
- Flow rate: 8.8 scfm

| Product Range Overview | | | | | | | | | | | |
|------------------------|-----------------------|---------------------------|-----------------------|----------|----------|----------|--------------------|------------|------------|-----------------------|--------------|
| Type | Pneumatic connections | | Filtration grade [µm] | | | | Bowl guard | | Bowl drain | Contamination control | Reverse flow |
| | Body thread | Port plate | 0.01 | 1 | 5 | 40 | Plastic bowl guard | Metal bowl | | | |
| MS4N | | AG... | A | B | C | E | R | U | M | DA | Z |
| LFX | 1/8 NPT, 1/4 NPT | 3/8 NPT, 1/4 NPT, 3/8 NPT | - | - | - | - | ■ | ■ | ■ | - | ■ |

Features

- Removal of liquid and gaseous oil particles from compressed air using active carbon
- Eliminates odors and vapors
- Prefiltration with micro filter MS4-LFM-A, filtration grade 0.01 µm, is required.

Contents

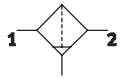
| | |
|----------------------|-------|
| Technical Data | → 292 |
| Dimensional Drawings | → 294 |
| Ordering Data | → 294 |
| Accessories | → 296 |
| Replacement Parts | → 304 |

→ www.festo.com/catalog/ms4n-lfx

Active Carbon Filters MS4N-LFX – Inch Series

Technical Data

ISO Symbol



Manual bowl drain



| General Technical Data | | |
|--|-------------------------|---------|
| Pneumatic connection 1, 2 | 1/8 NPT | 1/4 NPT |
| Air purity class at the output ¹⁾ | 1.7.1 to DIN ISO 8573-1 | |
| Supply pressure [psi] | 0 ... 206 | |

1) It is recommended to replace filter cartridges after 1,000 operating hours.

| Standard Nominal Flow Rate qnN ²⁾ and Standard Flow Rate qn [scfm] | | |
|---|---------|---------|
| Pneumatic connection 1, 2 | 1/8 NPT | 1/4 NPT |
| qnN 1 → 2 | 8.8 | 8.8 |
| qn max | 12.7 | 12.7 |

2) Measured at p1 = 88 psi and Δp = 1.0 psi

| Operating and Environmental Conditions | | |
|--|--|--|
| Operating medium | Compressed air, filtered, unlubricated, filtration grade 0.01 μm | |
| Bowl guard | Plastic bowl guard | |
| | Metal bowl | |
| Ambient temperature [°F] | 14 ... 140 | |
| Temperature of medium [°F] | 41 ... 86 | |
| Storage temperature [°F] | 14 ... 140 | |
| Assembly position | Vertical ±5° | |
| Corrosion resistance CRC ³⁾ | 2 | |

3) Corrosion resistance class 2 according to Festo standard 940 070
 Components requiring moderate corrosion resistance. Externally visible parts with primarily decorative surface requirements which are in direct contact with a normal industrial environment or media such as coolants or lubricating agents.

| Weights [lb] | |
|-------------------------|------|
| With plastic bowl guard | 0.38 |
| With metal bowl | 0.70 |

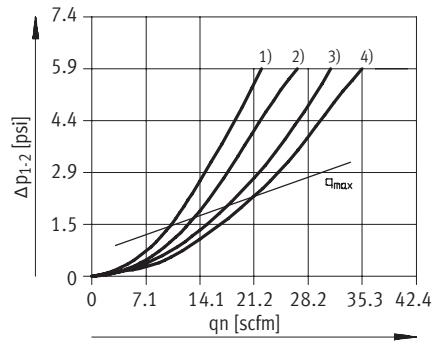
- Filter cartridges → 304
- For spare parts go to: www.festo.com/en/spare_parts_service

Active Carbon Filters MS4N-LFX – Inch Series

Technical Data

Standard Flow Rate q_n as a Function of the Differential Pressure Δp_{1-2}

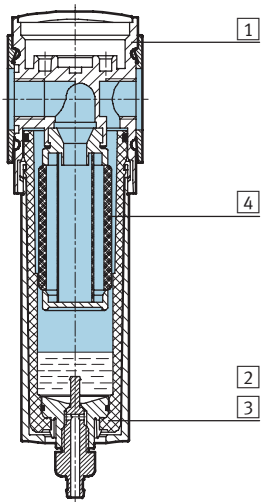
MS4N-LFX-1/8 and MS4N-LFX-1/4



- 1) 59 psi
- 2) 88 psi
- 3) 147 psi
- 4) 206 psi

Materials

Sectional view



| Active carbon filter | | |
|----------------------|--------------------|-------------------------|
| 1 | Body | Die-cast aluminum |
| 2 | Plastic bowl guard | Polycarbonate/polyamide |
| 3 | Metal bowl | Aluminum |
| | Viewing window | Polyamide |
| 4 | Filters | Active carbon |
| - | Seals | Nitrile rubber |
| Note on materials | | Free of copper and PTFE |

Active Carbon Filters MS4N-LFX – Inch Series

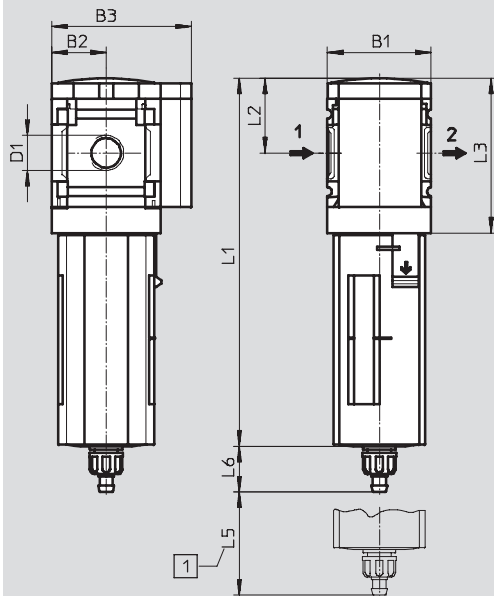
Dimensional Drawings, Ordering Data – Pre-configured Products



Dimensions¹⁾ – Standard

Download CAD Data → www.festo.com/us/cad

Manual bowl drain



1 Installation dimensions

→ Flow direction

| Type | B1 | B2 | B3 | D1 | L1 | | L2 | L3 | L5 | L6 | |
|--------------|------|------|------|---------|------------|-------|------|------|------|---------|-------|
| | | | | | Bowl guard | | | | | Plastic | Metal |
| | | | | | Plastic | Metal | | | | | |
| MS4N-LFX-1/8 | 1.58 | 0.83 | 2.13 | 1/8 NPT | 5.62 | 6.31 | 1.14 | 2.36 | 2.95 | 0.70 | 0.71 |
| MS4N-LFX-1/4 | | | | 1/4 NPT | | | | | | | |

1) Dimensions are in inches, unless otherwise noted.

Ordering Data

| Bowl drain | Connection | Plastic bowl guard | | | Metal bowl | | |
|------------|------------|--------------------|----------------|----|------------|----------------|----|
| | | Part No. | Type | LT | Part No. | Type | LT |
| Manual | 1/8 NPT | 536715 | MS4N-LFX-1/8-R | 1D | 536717 | MS4N-LFX-1/8-U | Q |
| | 1/4 NPT | 531764 | MS4N-LFX-1/4-R | 1D | 535786 | MS4N-LFX-1/4-U | Q |

LT = Lead time

1D typically ships same day/next day

1W typically ships within 1 week

Q request a quote for lead time

Active Carbon Filters MS4N-LFX – Inch Series



Ordering Data – Configurable Products

| M Mandatory Data | | | | | | O Options | | |
|----------------------|-----------|----------|----------|--------------|-------------------------|------------|------------------------|------------------------|
| Part No. | Series | Size | Thread | Function | Connection size | Bowl | Type of mounting | Reverse flow direction |
| 527700 | MS | 4 | N | LFX | 1/8, 1/4, AQK, AQN, AQP | R U | WP WPM WB WBM | Z |
| Order example | | | | | | | | |
| 527700 | MS | 4 | N | - LFX | - AQK | - R | - WP | - Z |

| Ordering Table | | Grid dimension [mm] | 40 | Conditions | Code | Enter code |
|----------------|------------------------|---------------------------------------|----|------------|------|------------|
| M | Part No. | 527700 | | | | |
| | Series | Standard | | | MS | MS |
| | Size | 4 | | | 4 | 4 |
| | Thread | NPT thread | | | N | N |
| | Function | Activated carbon filter | | | -LFX | -LFX |
| | Connection size | Body thread 1/8 NPT | | | -1/8 | |
| | | Body thread 1/4 NPT | | | -1/4 | |
| | | Port plate 1/8 NPT (dimensions → 300) | | | -AQK | |
| | | Port plate 1/4 NPT (dimensions → 300) | | | -AQN | |
| | | Port plate 3/8 NPT (dimensions → 300) | | | -AQP | |
| | Bowl | Plastic bowl with plastic bowl guard | | | -R | |
| | | Metal bowl | | | -U | |
| O | Type of mounting | Mounting bracket (dimensions → 301) | | 1 | -WP | |
| | | Mounting bracket (dimensions → 301) | | 1 | -WPM | |
| | | Mounting bracket (dimensions → 298) | | | -WB | |
| | | Mounting bracket (dimensions → 298) | | | -WBM | |
| | Reverse flow direction | Flow direction from right to left | | | -Z | |

1 WP, WPM Only with port plate AQK, AQN or AQP

Transfer order code

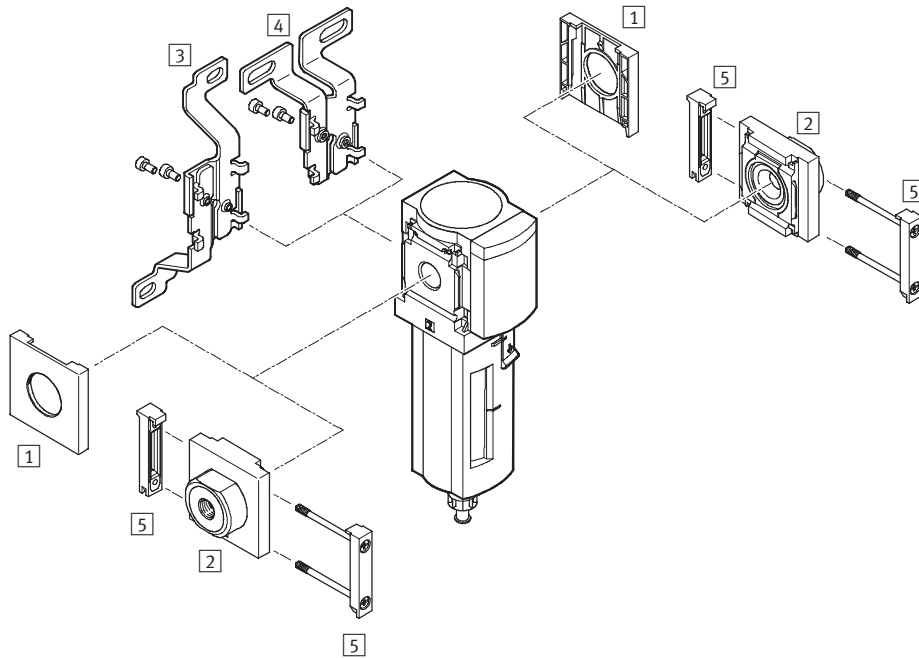
| | | | | | | | | | | |
|--------|----|---|---|-------|---|--|---|--|---|--|
| 527700 | MS | 4 | N | - LFX | - | | - | | - | |
|--------|----|---|---|-------|---|--|---|--|---|--|

Active Carbon Filters MS4N-LFX – Inch Series

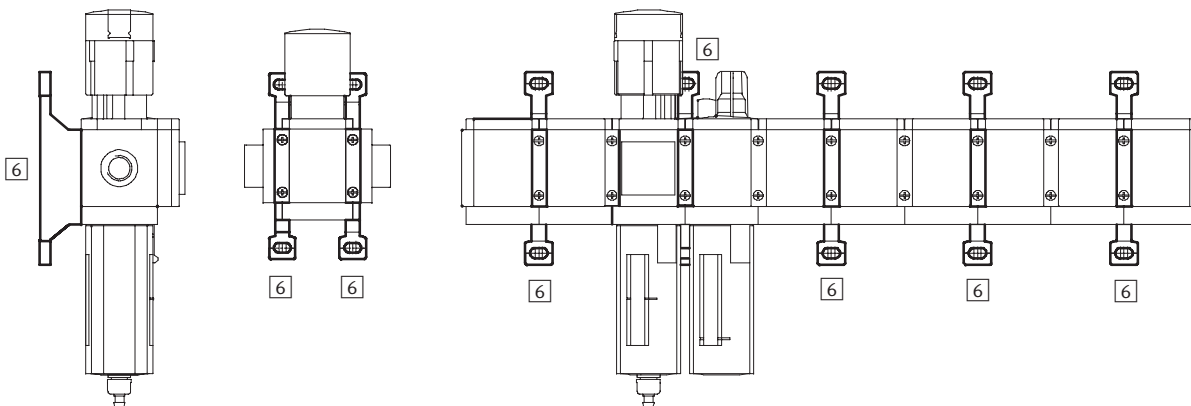
Accessories Overview



Mounting Attachments and Accessories



Single unit and combination unit mounting brackets.



Active Carbon Filters MS4N-LFX – Inch Series

Accessories Overview

FESTO

| Mounting Attachments and Accessories | | | | | | |
|--------------------------------------|------------------------------------|--------------------|-----------------|---------------------------|-----------------|--------|
| | | Single unit | | Combination unit → 2.1-49 | | → Page |
| | | without port plate | with port plate | without port plate | with port plate | |
| 1 | Cover cap MS4-END | ■ | - | ■ | - | 299 |
| 2 | Port plate MS4N-AQ.. | - | ■ | - | ■ | 300 |
| 3 | Mounting bracket MS4-WB | ■ | ■ | - | - | 298 |
| 4 | Mounting bracket MS4-WBM | ■ | ■ | - | - | 298 |
| 5 | Body connector MS4-MV | - | ■ | ■ | ■ | 300 |
| 6 | Mounting bracket MS4-WP/WPB/WPM | - | ■ | ■ | ■ | 301 |

Active Carbon Filters MS4N-LFX – Inch Series

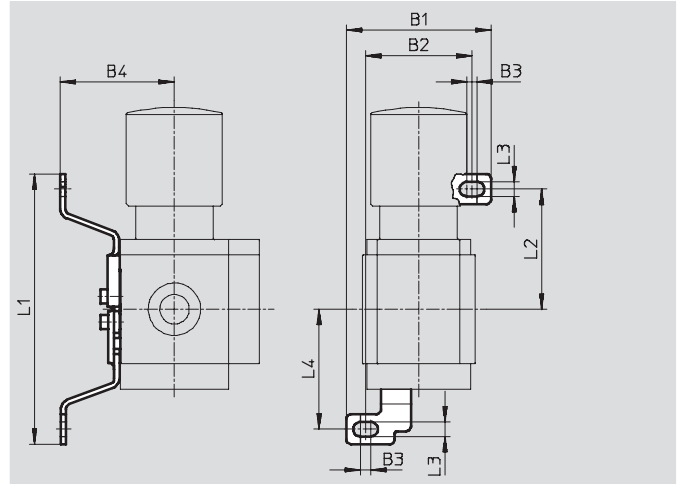


Accessories

3 Mounting bracket MS4-WB

- For wall mounting

Material:
Steel

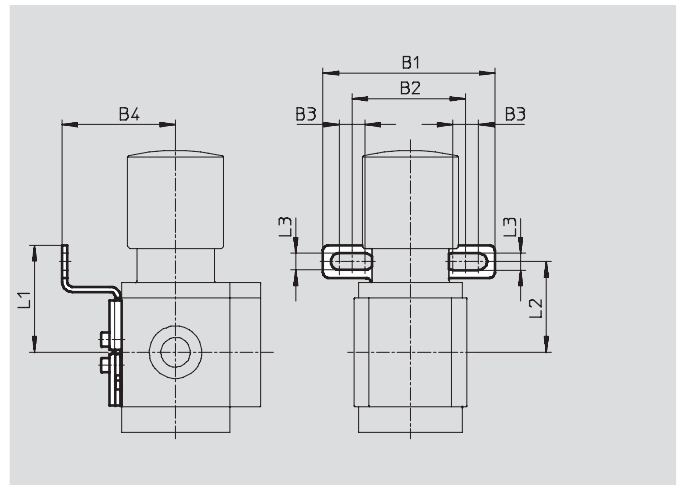


| Dimensions and Ordering Data | | | | | | | | | | |
|------------------------------|------|------|------|------|------|------|------|-------------|----------|--------|
| B1 | B2 | B3 | B4 | L1 | L2 | L3 | L4 | Weight [lb] | Part No. | Type |
| 2.21 | 1.62 | 0.16 | 1.74 | 4.12 | 1.83 | 0.22 | 1.79 | 0.09 | 532185 | MS4-WB |

4 Mounting bracket MS4-WBM

- For wall mounting

Material:
Steel



| Dimensions and Ordering Data | | | | | | | | | |
|------------------------------|------|------|------|------|------|------|-------------|----------|---------|
| B1 | B2 | B3 | B4 | L1 | L2 | L3 | Weight [lb] | Part No. | Type |
| 2.62 | 1.73 | 0.39 | 1.73 | 1.63 | 1.38 | 0.26 | 0.10 | 526062 | MS4-WBM |

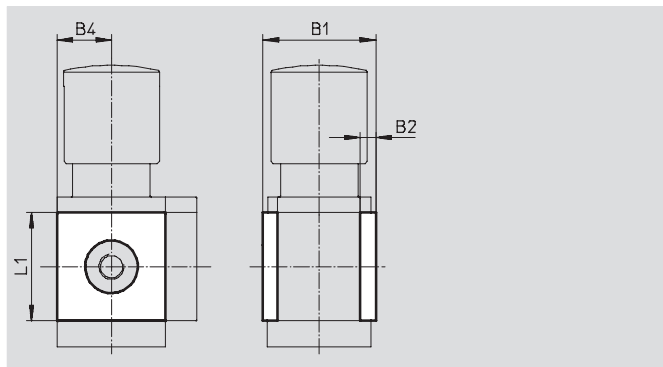
Active Carbon Filters MS4N-LFX – Inch Series

Accessories

1 Cover cap MS4-END

- Can be used to cover the body sides of the first and last module if port plates are not used.

Material:
Reinforced polyamide
Free of copper and PTFE

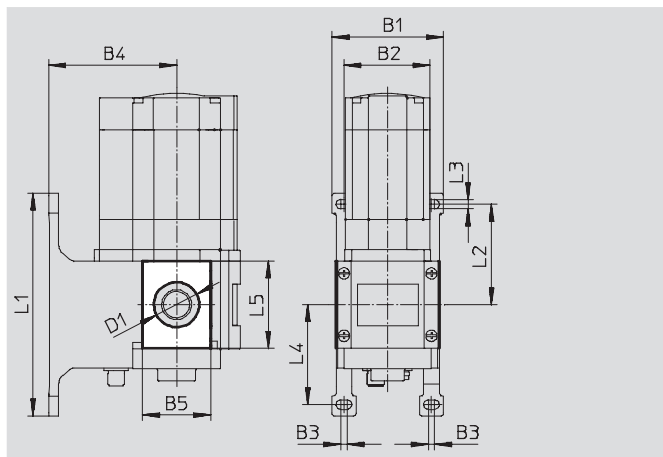


| Dimensions and Ordering Data | | | | | | |
|------------------------------|------|------|------|----------|---------|--|
| B1 | B2 | B4 | L1 | Part No. | Type | |
| 1.72 | 0.24 | 0.83 | 1.65 | 538779 | MS4-END | |

Mounting plate MS4-AEND

- In combination with mounting bracket MS-WP or MS-WPB for mounting an individual unit with body thread on a wall

Material:
Reinforced polyamide
Conforms to RoHS
Free of copper and PTFE



| Dimensions and Ordering Data | | | | | | | | | | | | | | | |
|------------------------------|------|------|------|------|------|---------|------|------|------|------|------|-------------------|----------------|----------|----------|
| B1 | B2 | B3 | B4 | | B5 | D1 ∅ | L1 | L2 | L3 | L4 | L5 | CRC ¹⁾ | Weight [lb] | Part No. | Type |
| | | | WP | WPB | | | | | | | | | | | |
| 2.17 | 1.58 | 0.16 | 1.73 | 2.60 | 1.20 | 0.80 | 4.17 | 1.83 | 0.22 | 1.84 | 1.65 | 2 | 0.01 | 542966 | MS4-AEND |

1) Corrosion resistance class 2 according to Festo standard 940 070
Components requiring moderate corrosion resistance. Externally visible parts with primarily decorative surface requirements which are in direct contact with a normal industrial environment or media such as coolants or lubricating agents.

Active Carbon Filters MS4N-LFX – Inch Series

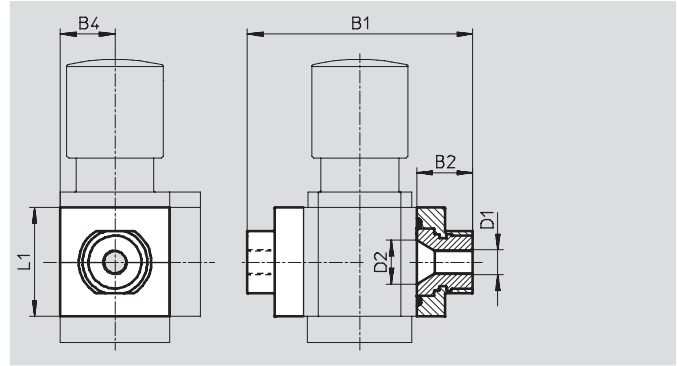
Accessories

FESTO

2 Port plate MS4N-AQ...

- Adapter for pneumatic connection

Material:
Aluminum



| Dimensions and Ordering Data | | | | | | | | |
|------------------------------|------|------|---------|------|------|-------------|----------|----------|
| B1 | B2 | B4 | D1 | D2 | L1 | Weight [lb] | Part No. | Type |
| 3.29 | 0.85 | 0.83 | 1/8 NPT | 0.66 | 1.65 | 0.26 | 526065 | MS4N-AQK |
| | | | 1/4 NPT | | | | 526066 | MS4N-AQN |
| | | | 3/8 NPT | | | | 526067 | MS4N-AQP |

5 Body connector MS4-MV

- For connecting modules

Material:
Stainless steel/polyacetate



| Ordering Data | | |
|---------------|----------|--------|
| Weight [lb] | Part No. | Type |
| 0.07 | 532798 | MS4-MV |

Active Carbon Filters MS4N-LFX – Inch Series

Accessories



6 Mounting Bracket MS4-WP...

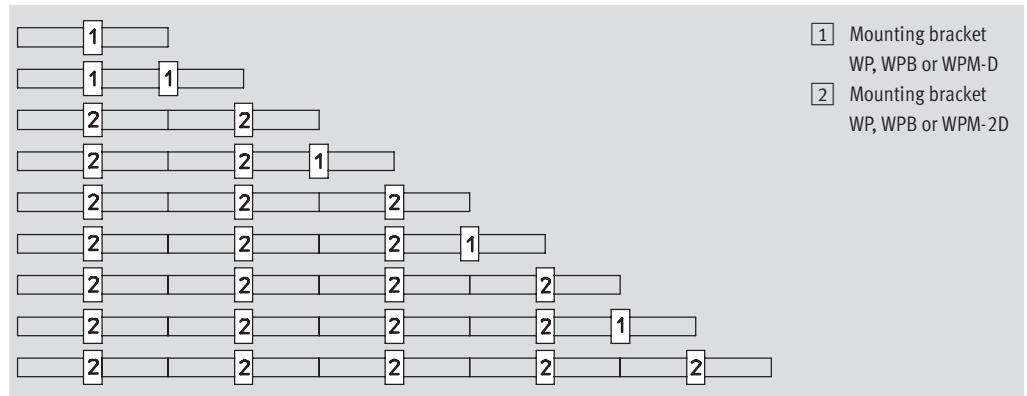
Suggested placement of wall mounting brackets when mounting air preparation combinations

1 unit: 1.575 in

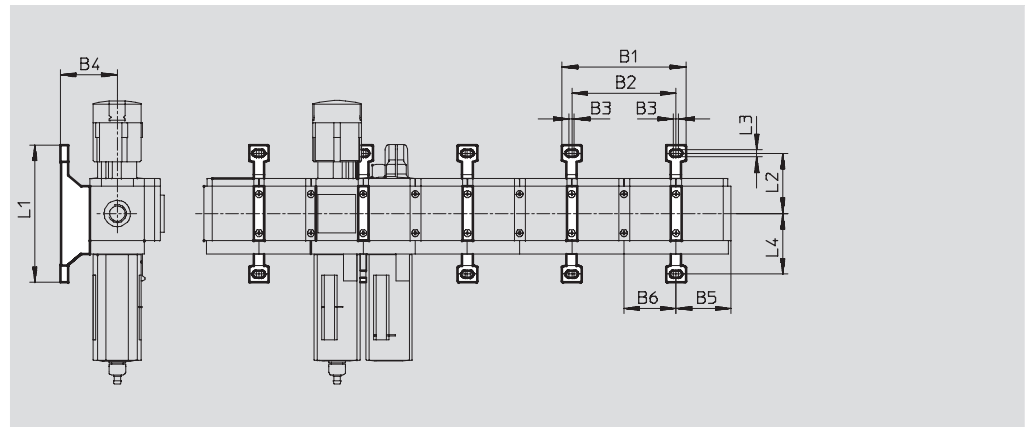
2 units: 3.15 in

Number of units

1 2 3 4 5 6 7 8 9 10



Mounting dimensions



| Type | B1 | B2 | B3 | B4 | B5 | B6 | L1 | L2 | L3 | L4 |
|--------------|------|------|------|------|------|------|------|------|------|------|
| MS4-WP | 3.75 | 3.15 | 0.16 | 1.73 | 1.65 | 1.57 | 4.17 | 1.83 | 0.22 | 1.84 |
| MS4-WPB | | | | 2.60 | | | | | | 1.57 |
| MS4-WPM-...D | | | | 1.73 | | | | | | 3.65 |

Active Carbon Filters MS4N-LFX – Inch Series

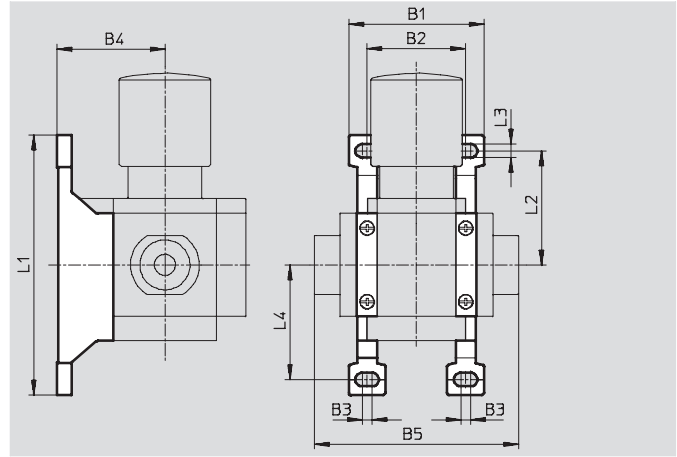


Accessories

Mounting bracket MS4-WP

- To connect the modules for wall mounting
- In combination with a port plate MS-AG... for mounting an individual unit on a wall
- In combination with mounting plate MS-AEND or for mounting an individual unit with body thread on a wall
- For pressure regulator LRB with angled outlet block B... at rear

Material:
Die-cast aluminum

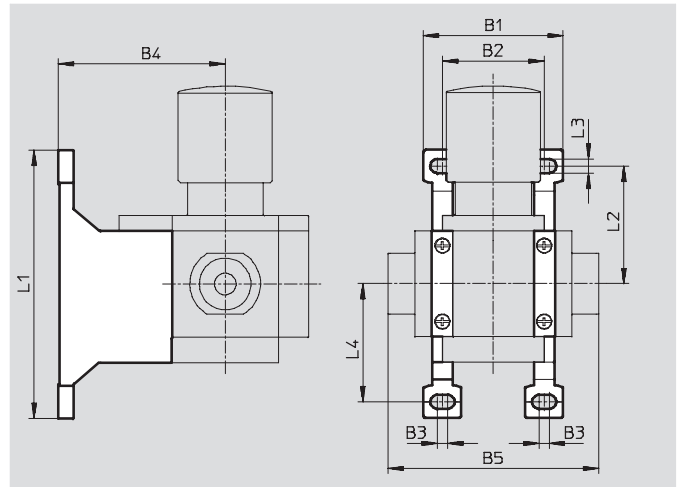


| Dimensions and Ordering Data | | | | | | | | | | | |
|------------------------------|------|------|------|------|------|------|------|------|-------------|----------|--------|
| B1 | B2 | B3 | B4 | B5 | L1 | L2 | L3 | L4 | Weight [lb] | Part No. | Type |
| 2.17 | 1.58 | 0.16 | 1.73 | 3.28 | 4.17 | 1.83 | 0.22 | 1.84 | 0.08 | 532184 | MS4-WP |

Mounting bracket MS4-WPB

- To connect the modules for wall mounting
- In combination with a port plate MS-AG... for mounting an individual unit on a wall
- In combination with mounting plate MS-AEND or for mounting an individual unit with direct thread on a wall
- Provides large wall gap for pressure regulator

Material:
Die-cast aluminum



| Dimensions and Ordering Data | | | | | | | | | | | |
|------------------------------|------|------|------|------|------|------|------|------|-------------|----------|---------|
| B1 | B2 | B3 | B4 | B5 | L1 | L2 | L3 | L4 | Weight [lb] | Part No. | Type |
| 2.17 | 1.58 | 0.16 | 2.60 | 3.28 | 4.17 | 1.83 | 0.22 | 1.84 | 0.11 | 526063 | MS4-WPB |

Active Carbon Filters MS4N-LFX – Inch Series

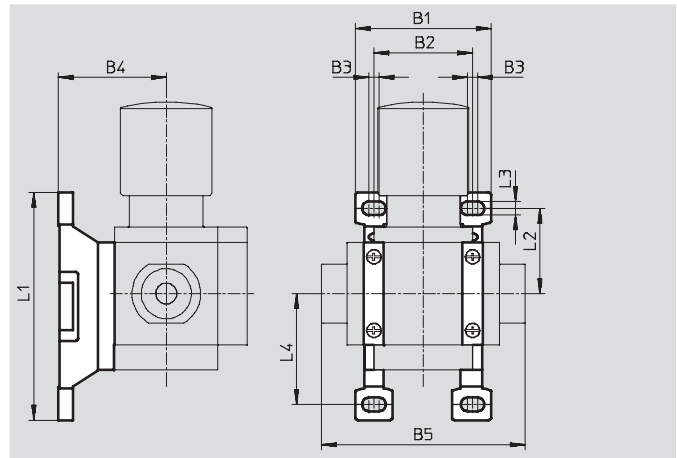
Accessories

Mounting bracket MS4-WPM

- To connect the modules for wall mounting
- In combination with a port plate MS-AG... for mounting an individual unit on a wall
- Speedy attachment and detachment
- For installation of modules with regulating knob pointing downwards

The distance piece D or 2D (designated in the type code) is included in the scope of delivery and ensures the correct clearance

Material:
Die-cast aluminum



| Dimensions and Ordering Data | | | | | | | | | | | | |
|------------------------------|------|------|------|------|------|------|------|------|-----------|-------------|----------|------------|
| B1 | B2 | B3 | B4 | B5 | L1 | L2 | L3 | L4 | Clearance | Weight [lb] | Part No. | Type |
| 2.17 | 1.57 | 0.16 | 1.73 | 3.28 | 3.65 | 1.37 | 0.22 | 1.78 | 1.57 | 0.09 | 526060 | MS4-WPM-D |
| 3.75 | 3.15 | | | 4.86 | | | | | 3.15 | 0.11 | 526061 | MS4-WPM-2D |

Body connector MS4-MVM

- For installation of modules with regulating knob pointing downwards

Material:
Die-cast aluminum



| Ordering Data | | |
|---------------|----------|---------|
| Size | Part No. | Type |
| MS4 | 532800 | MS4-MVM |

Active Carbon Filters MS4N-LFX – Inch Series

Replacement Parts

FESTO



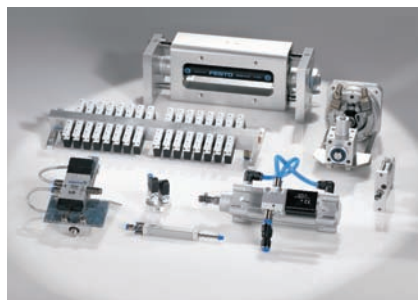
| Ordering Data – Filter Cartridges | | | |
|-----------------------------------|--|----------|----------------|
| Size | Filtration grade [µm] | Part No. | Type |
| MS4 | Residual oil content $\leq 0.003 \text{ mg/m}^3$ | 532912 | MS4/D-MINI-LFX |

- For spare parts go to: www.festo.com/en/spare_parts_service

Product Range and Company Overview

A Complete Suite of Automation Services

Our experienced engineers provide complete support at every stage of your development process, including: conceptualization, analysis, engineering, design, assembly, documentation, validation, and production.



Custom Automation Components
Complete custom engineered solutions



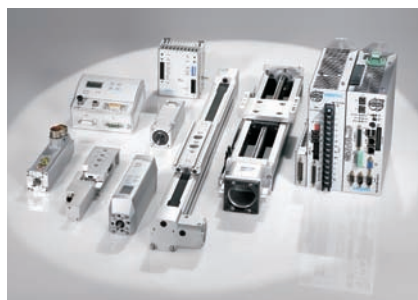
Custom Control Cabinets
Comprehensive engineering support
and on-site services



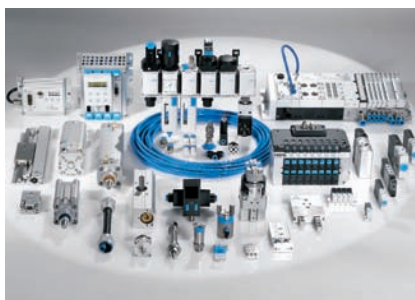
Complete Systems
Shipment, stocking and storage services

The Broadest Range of Automation Components

With a comprehensive line of more than 30,000 automation components, Festo is capable of solving the most complex automation requirements.



Electromechanical
Electromechanical actuators, motors,
controllers & drives



Pneumatics
Pneumatic linear and rotary actuators,
valves, and air supply



PLCs and I/O Devices
PLC's, operator interfaces, sensors
and I/O devices

Supporting Advanced Automation... As No One Else Can!

Festo is a leading global manufacturer of pneumatic and electromechanical systems, components and controls for industrial automation, with more than 11,500 employees in 56 national headquarters serving more than 180 countries. For more than 80 years, Festo has continuously elevated the state of manufacturing with innovations and optimized motion control solutions that deliver higher performing, more profitable automated manufacturing and processing equipment. Our dedication to the advancement of automation extends beyond technology to the education and development of current and future automation and robotics designers with simulation tools, teaching programs, and on-site services.

Quality Assurance, ISO 9001 Certification

Festo Corporation is committed to provide Festo products and services that will meet or exceed our customers' requirements in product quality, delivery, customer service and satisfaction.

All Festo locations within the United States are registered to ISO 9001.



Festo North America

United States

Customer Resource Center

502 Earth City Expy., Suite 125
Earth City, MO 63045

For ordering assistance, or to find
your nearest Festo Distributor,

Call: 1.800.99.FESTO

Fax: 1.800.96.FESTO

Email: customer.service@us.festo.com

For technical support,

Call: 1.866.GO.FESTO

Fax: 1.800.96.FESTO

Email: product.support@us.festo.com

Headquarters

Festo Corporation
395 Moreland Road
P.O. Box 18023
Hauppauge, NY 11788
www.festo.com/us

Sales Offices

Appleton

N. 922 Tower View Drive, Suite N
Greenville, WI 54942

Boston

120 Presidential Way, Suite 330
Woburn, MA 01801

Chicago

1441 East Business Center Drive
Mt. Prospect, IL 60056

Dallas

1825 Lakeway Drive, Suite 600
Lewisville, TX 75057

Detroit - Automotive Engineering Center

2601 Cambridge Court, Suite 320
Auburn Hills, MI 48326

New York

395 Moreland Road
Hauppauge, NY 11788

Silicon Valley

2800 Collier Canyon Road
Livermore, CA 94550

Design and Manufacturing Operations



East: 395 Moreland Road, Hauppauge, NY 11788



Central: 1441 East Business Center Drive, Mt. Prospect, IL 60056



West: 2800 Collier Canyon Road, Livermore, CA 94550

Mexico

Headquarters

Festo Pneumatic, S.A.
Av. Ceylán 3, Col. Tequesquahuac
54020 Tlalnepantla, Edo. de México
Call: 011 52 [55] 53 21 66 00
Fax: 011 52 [55] 53 21 66 65
Email: festo.mexico@mx.festo.com
www.festo.com/mx



Canada

Headquarters

Festo Inc.
5300 Explorer Drive
Mississauga, Ontario L4W 5G4
Call: 1.905.624.9000
Fax: 1.905.624.9001
Email: info.ca@ca.festo.com
www.festo.com/ca



Festo Worldwide

Argentina Australia Austria Belarus Belgium Brazil Bulgaria Canada Chile China Colombia Croatia Czech Republic Denmark
Estonia Finland France Germany Great Britain Greece Hong Kong Hungary India Indonesia Iran Ireland Israel Italy Japan
Latvia Lithuania Malaysia Mexico Netherlands New Zealand Norway Peru Philippines Poland Romania Russia Serbia Singapore
Slovakia Slovenia South Africa South Korea Spain Sweden Switzerland Taiwan Thailand Turkey Ukraine United States Venezuela

www.festo.com