

Pressure Regulators MS12-LR – Metric Series

FESTO



The pressure regulator maintains a constant working pressure (secondary side), regardless of the pressure variations in the system (primary side) and the air consumption.

- Pneumatic connection: G1, G1¼, G1½, G2
- Supply pressure: 0.8 ... 21 bar
- Flow rate: 13,000 ... 22,000 l/min

Product Range Overview														
Type	Pneumatic connections		Pressure regulation range [bar]				Pressure indicator					Pressure adjustment		Reverse flow
	Body thread	Port plate	0.3 ... 4	0.3 ... 7	0.5 ... 12	0.5 ... 16	Cover plate (without pressure gauge)	Integrated MS pressure gauge	Adapter for pressure gauge G¼	Adapter for pressure gauge G¼	Pressure sensor with display	Rotary knob, lockable	Rotary knob, long	Flow direction from right to left
MS12		AG...	D5	D6	D7	D8	VS	AG	A8	A4	AD...	AS	LD	Z
LR	–	G1, G1¼, G1½, G2	–	■	■	■	■	–	–	■	–	■	■	■

Features

- Good control characteristics with low hysteresis and primary pressure compensation
- High flow rate with minimal pressure drop
- Three pressure regulation ranges
- Pressure gauge connection for different fitting options
- Setting values are secured by locking the rotary knob
- With secondary venting
- Rotary knob can be locked using accessories

Contents

Technical Data	➔ 1076
Dimensional Drawings	➔ 1078
Ordering Data	➔ 1079
Accessories	➔ 1082
Replacement Parts	➔ 1086

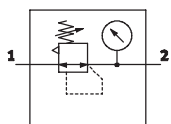
➔ www.festo.com/catalog/ms12-lr

Pressure Regulators MS12-LR – Metric Series

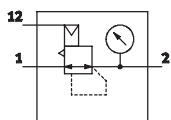
Technical Data

FESTO

ISO Symbol



With pressure gauge



With pressure gauge and air pilot control (variant PO)



General Technical Data				
Pneumatic connection 1, 2 ¹⁾		G1	G1¼	G1½
Pilot air connection 12 for variant PO		G¼		
Supply pressure		[bar]	0.8 ... 21	
Pressure regulation range	D6	[bar]	0.3 ... 7	
	D7	[bar]	0.5 ... 12	
	D8	[bar]	0.5 ... 16	
Max. hysteresis		[bar]	0.4	

1) Dependent on port plate selected, must be ordered separately as an accessory → 1083

Note: This product conforms with the ISO 1179-1 standard and the ISO 228-1 standard.

Standard Nominal Flow Rate q _N ²⁾ [l/min]				
Pneumatic connection 1, 2		G1	G1¼	G1½
In main flow direction 1 → 2		13,000	13,500	16,000
				22,000

2) Dependent on port plate selected, must be ordered separately as an accessory → 1083
Measured at p₁ = 10 bar and p₂ = 6 bar, Δp = 0.5 bar

Operating and Environmental Conditions	
Operating medium	Compressed air, air quality class 5.7 – to DIN ISO 8573-1
Ambient temperature	[°C] –10 ... +60
Temperature of medium	[°C] –10 ... +60
Storage temperature	[°C] –10 ... +60
Assembly position	Any
Corrosion resistance	CRC ³⁾ 2

3) Corrosion resistance class 2 according to Festo standard 940 070
Components requiring moderate corrosion resistance. Externally visible parts with primarily decorative surface requirements which are in direct contact with a normal industrial environment or media such as coolants or lubricating agents.

Weights [g]	
Product weight	4,000

- Wearing parts kits → 1086
- For spare parts go to: www.festo.com/en/spare_parts_service

Pressure Regulators MS12-LR – Metric Series

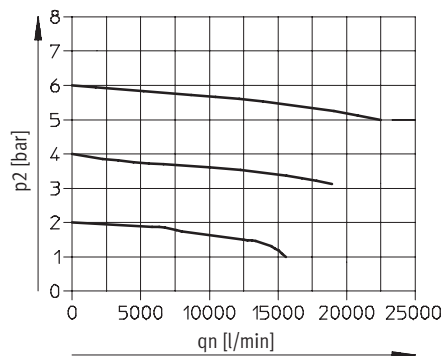
Technical Data

FESTO

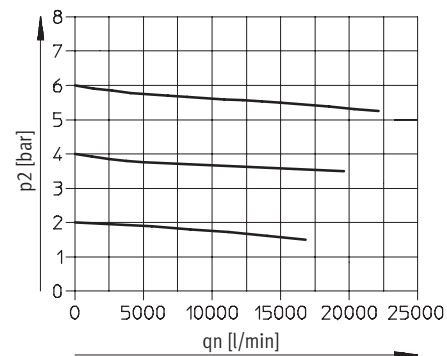
Standard Flow Rate q_n as a Function of Output Pressure p_2

Primary pressure $p_1 = 10$ bar

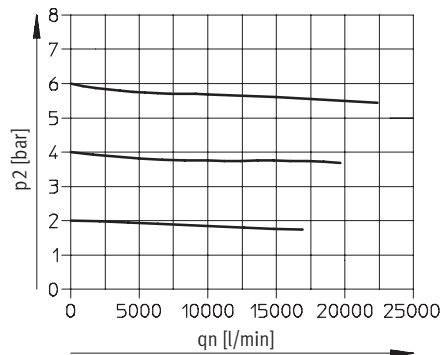
With port plate MS12-AGF
Pneumatic connection G1



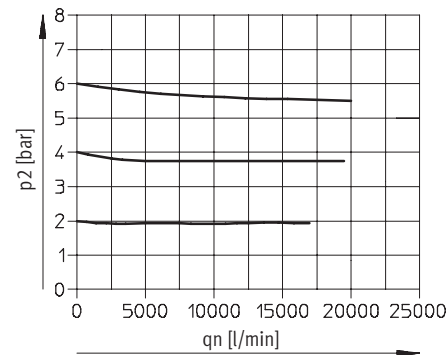
With port plate MS12-AGG
Pneumatic connection G1¼



With port plate MS12-AGH
Pneumatic connection G1½

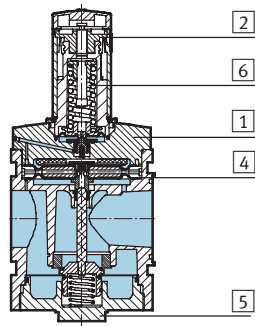


With port plate MS12-AGI
Pneumatic connection G2



Materials

Sectional view



Pressure regulator	
1 Body	Die-cast aluminum
2 Regulating knob	Polyamide/polyacetate
4 Diaphragm	Nitrile rubber
5 Bottom cap	Wrought aluminum alloy
6 Springs	Steel
- Seals	Nitrile rubber
Note on materials: Free of copper and PTFE only with cover plate VS	

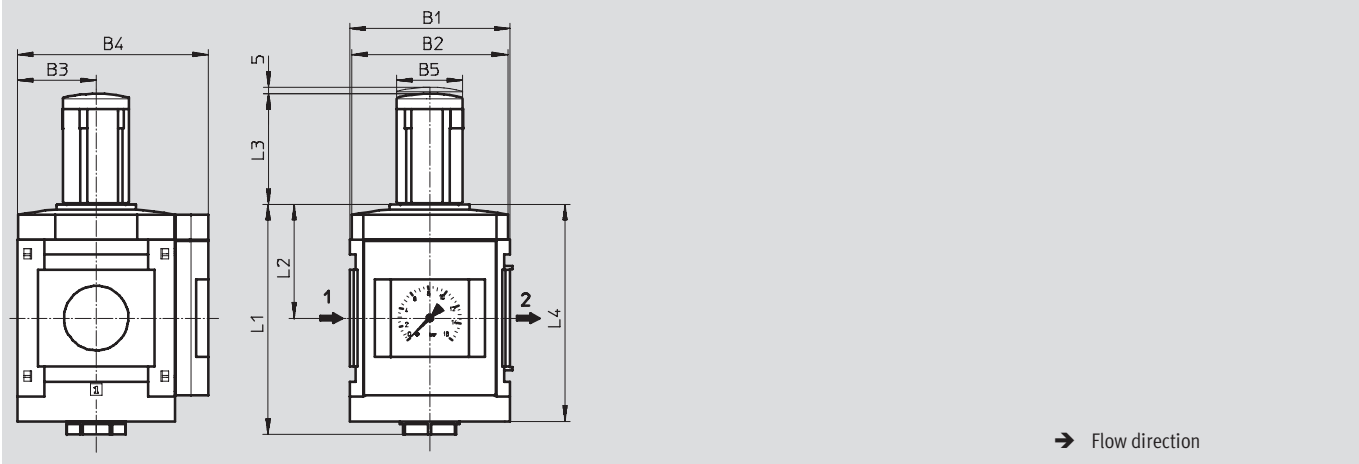
Pressure Regulators MS12-LR – Metric Series

Dimensional Drawings

Dimensions¹⁾ – Standard

Download CAD Data → www.festo.com/us/cad

With pressure gauge, display unit [bar], long rotary knob



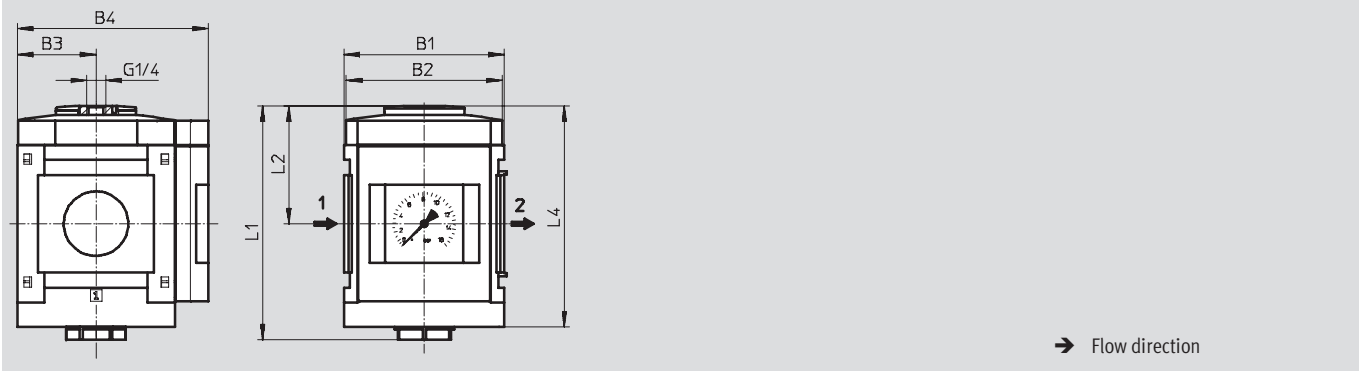
B1	B2	B3	B4	B5	L1	L2	L3	L4
124	122	61	148	51	178	88	86	168

1) Dimensions are in millimeters, unless otherwise noted.

Dimensions¹⁾ – Alternative Operating Principle

Download CAD Data → www.festo.com/us/cad

Pneumatically actuated PO, with pressure gauge, display unit [bar]



Type	B1	B2	B3	B4	L1	L2	L4
MS12-LR-...-PO	124	122	61	148	181	91	171

1) Dimensions are in millimeters, unless otherwise noted.

Pressure Regulators MS12-LR – Metric Series

Dimensional Drawings, Ordering Data – Pre-configured Products

Dimensions¹⁾ – Pressure Gauge Alternatives

Cover plate VS

Download CAD Data → www.festo.com/us/cad

Adapter A4 for EN pressure gauge 1/4, without pressure gauge

→ Flow direction

Type	B3	B4	D4
MS12-LR-...-VS	61	148	–
MS12-LR-...-A4	61	148	G ¹ / ₄

1) Dimensions are in millimeters, unless otherwise noted.

Dimensions¹⁾ – Rotary Knob

Long, lockable LD-AS

Type	B5	B6	L3
MS12-LR-...-LD-AS	64.4	39	95.5

1) Dimensions are in millimeters, unless otherwise noted.

Ordering Data				
Pressure gauge				
Connection	Long rotary knob, can be locked using accessories, pressure regulation range 0.5... 12 bar			Alternative operating principle, pressure regulation range 0.5... 16 bar
	Part No.	Type	LT	Part No. Type LT
G1 ... G2 ²⁾	537148	MS12-LR-G-D7-LD-AS	1D	541680 MS12-LR-G-D8-PO Q

LT = Lead time 1D typically ships same day/next day 1W typically ships within 1 week Q request a quote for lead time

2) Port plate must be ordered separately as an accessory → 1083

Note: This product conforms with the ISO 1179-1 standard and the ISO 228-1 standard.

Pressure Regulators MS12-LR – Metric Series

Ordering Data – Configurable Products

FESTO

M Mandatory Data →

Part No.	Series	Size	Function	Connection size	Pressure regulation range
535021	MS	12	LR	AGF AGG AGH AGI G	D6 D7 D8
Order example					
535021	MS	12	- LR	- G	- D8

Ordering Table					
Grid dimension	[mm]	124	Conditions	Code	Enter code
M	Part No.	535021			
	Series	Standard		MS	MS
	Size	12		12	12
	Function	Pressure regulator		-LR	-LR
	Connection size	Port plate G1 (dimensions → 1083)		-AGF	
		Port plate G1¼ (dimensions → 1083)		-AGG	
		Port plate G1½ (dimensions → 1083)		-AGH	
		Port plate G2 (dimensions → 1083)		-AGI	
		Module without connecting thread, without port plate		-G	
	Pressure regulation range	0.3 ... 7 bar		-D6	
		0.5 ... 12 bar		-D7	
		0.5 ... 16 bar		-D8	

Transfer order code

535021	MS	12	- LR		
---------------	-----------	-----------	-------------	--	--

Pressure Regulators MS12-LR – Metric Series

Ordering Data – Configurable Products

FESTO

0 Options

Pressure gauge alternatives	Alternative pressure gauge scale	Rotary knob	Security	Alternative operating principle	Type of mounting	Reverse flow direction
VS A4	PSI MPa	LD	AS	PO	WP	Z
- VS	-	- LD	- AS	-	-	- Z

Ordering Table

Grid dimension	[mm]	124	Conditions	Code	Enter code
0	Pressure gauge alternatives	Cover plate		-VS	
		Adapter plate for EN pressure gauge 1/4, without pressure gauge		-A4	
	Alternative pressure gauge scale	psi	1	-PSI	
		MPa	1	-MPA	
	Rotary knob	Long rotary knob	2	-LD	
	Security	Lockable rotary knob		-AS	
	Alternative operating principle	Pneumatically actuated	3	-PO	
	Type of mounting	Mounting bracket (dimensions → 1084)	4	-WP	
	Reverse flow direction	Flow direction from right to left		-Z	

- 1 **PSI, MPa** Not with pressure gauge alternatives VS, A4
 2 **LD** Must be selected if alternative operating principle PO has not been selected

- 3 **PO** Not with rotary knob LD.
 Not with security AS
 4 **WP** Only with port plate AGF, AGG, AGH or AGI

Transfer order code

- - - - - - -

Pressure Regulators MS12-LR – Metric Series

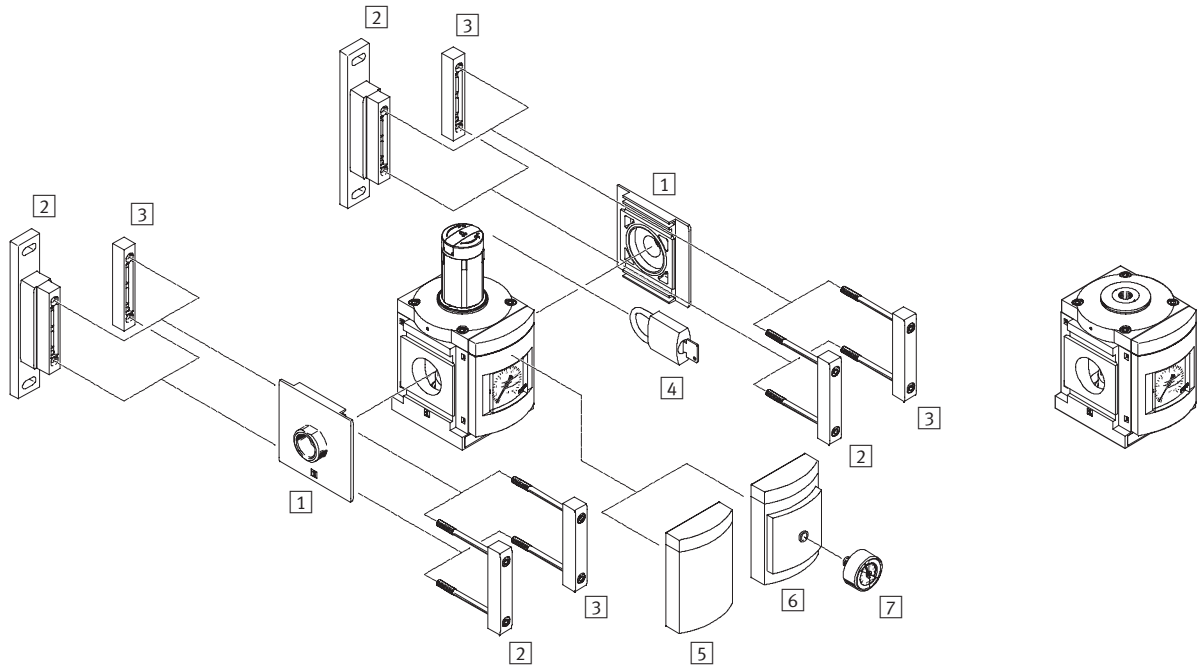
Accessories Overview

FESTO

Mounting Attachments and Accessories

Standard

Variant PO
pneumatically actuated



Mounting Attachments and Accessories		→ Page
1	Port plate MS12-AG...	1083
2	Mounting bracket MS12-WP	1084
3	Body connector MS12-MV	1083
4	Padlock (except variant PO) LRVS-D	1085
5	Cover plate VS	1081
6	Adapter for EN pressure gauge 1/4" A4	1081
7	Pressure gauge MA	1085

Pressure Regulators MS12-LR – Metric Series

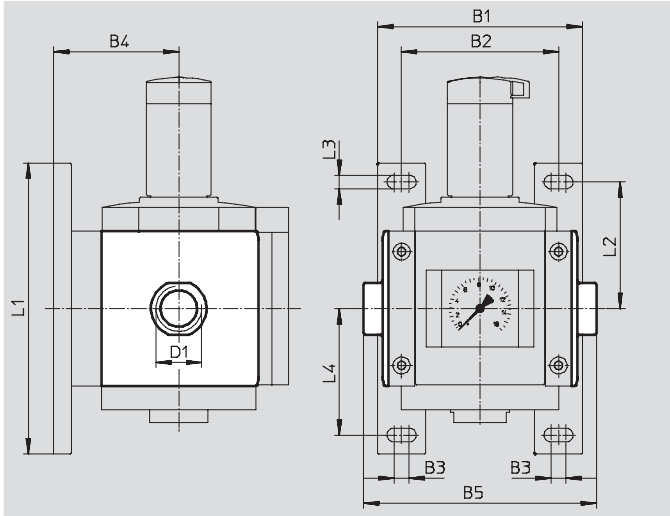


Accessories

1 Port plate MS12-AG...

- Adapter for pneumatic connection

Material:
Die-cast aluminum
Free of copper and PTFE



Dimensions and Ordering Data												
B1	B2	B3	B4	B5	D1	L1	L2	L3	L4	Weight [g]	Part No.	Type
162	124	12	99	184	G1	230	100	11	100	1,300	537135	MS12-AGF
				184	G1¼						537136	MS12-AGG
				184	G1½						537137	MS12-AGH
				196	G2						537138	MS12-AGI

3 Body connector MS12-MV

- For connecting modules

Material:
Die-cast aluminum,
Free of copper and PTFE



Ordering Data			
Size	Weight [g]	Part No.	Type
MS12	500	537134	MS12-MV

Pressure Regulators MS12-LR – Metric Series

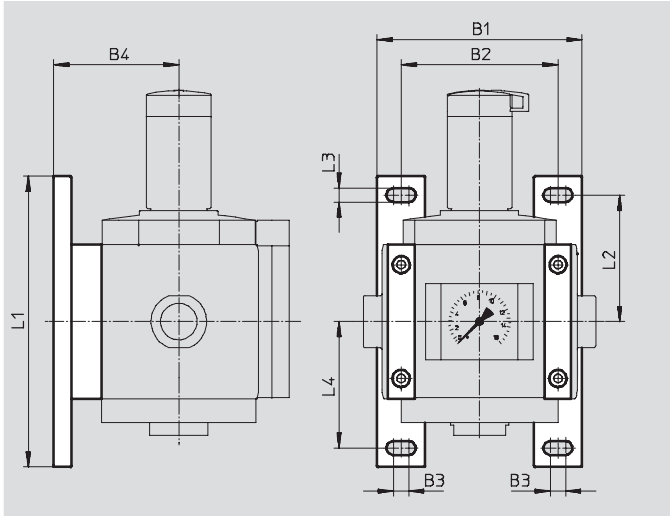


Accessories

2 Mounting bracket MS12-WP

- To connect the modules for wall mounting
- In combination with a port plate for mounting an individual unit on a wall

Material:
Die-cast aluminum
Free of copper and PTFE




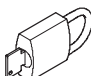
Dimensions and Ordering Data											
Size	B1	B2	B3	B4	L1	L2	L3	L4	Weight [g]	Part No.	Type
MS12	162	124	12	99	230	100	11	100	700	537133	MS12-WP

Pressure Regulators MS12-LR – Metric Series

Accessories

FESTO

7 Ordering Data – Pressure Gauge MA					Technical data → www.festo.com/catalog/ma	
	Nominal size	Pneumatic connection	Indicating range		Part No.	Type
			[bar]	[psi]		
	Pressure gauge MA, DIN EN 837-1					
	40	G¼	0 ... 16	0 ... 232	183901	MA-40-16-G¼-EN
	Pressure gauge MA, DIN EN 837-1, with red-green range					
	50	R¼	0 ... 16	–	525729	MA-50-16-R¼-E-RG

4 Ordering Data – Padlock LRV5-D			
	Description	Weight [g]	Part No. Type
	for regulators, filter/regulators and manual on-off valves	120	193786 LRV5-D

Pressure Regulators MS12-LR – Metric Series



Replacement Parts

Ordering Data – Wearing Parts Kits			
Size	Description	Part No.	Type
MS12	Snap-ring, membrane, bellows, O-rings, screws, stem	673586	MS12-LR/LFR

- For spare parts go to: www.festo.com/en/spare_parts_service

Pressure Regulators MS12N-LR – Inch Series

FESTO



The pressure regulator maintains a constant working pressure (secondary side), regardless of the pressure variations in the system (primary side) and the air consumption.

- Pneumatic connection: 1 NPT, 1 1/4 NPT, 1 1/2 NPT, 2 NPT
- Supply pressure: 12 ... 309 psi
- Flow rate: 458.9 ... 776.6 scfm

Product Range Overview														
Type	Pneumatic connections		Pressure regulation range [psi]				Pressure indicator				Pressure adjustment		Reverse flow	
	Body thread	Port plate	4.4 ... 59	4.4 ... 103	7.4 ... 176	7.4 ... 235	Cover plate (without pressure gauge)	Integrated MS pressure gauge	Adapter for pressure gauge 1/8 NPT	Adapter for pressure gauge 1/4 NPT	Pressure sensor with display	Rotary knob, lockable	Rotary knob, long	Flow direction from right to left
MS12N		AG...	D5	D6	D7	D8	VS	AG	A8	A4	AD...	AS	LD	Z
LR	–	1 NPT, 1 1/4 NPT, 1 1/2 NPT, 2 NPT	–	■	■	■	■	–	–	■	–	■	■	■

Features

- Good control characteristics with low hysteresis and primary pressure compensation
- High flow rate with minimal pressure drop
- Three pressure regulation ranges
- Pressure gauge connection for different fitting options
- Setting values are secured by locking the rotary knob
- With secondary venting
- Rotary knob can be locked using accessories

Contents

Technical Data	→ 1088
Dimensional Drawings	→ 1090
Ordering Data	→ 1091
Accessories	→ 1094
Replacement Parts	→ 1098

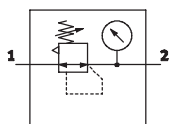
→ www.festo.com/catalog/ms12n-lr

Pressure Regulators MS12N-LR – Inch Series

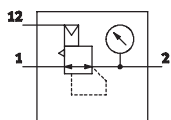
Technical Data

FESTO

ISO Symbol



With pressure gauge



With pressure gauge and air pilot control (variant PO)



General Technical Data					
Pneumatic connection 1, 2 ¹⁾		1 NPT	1¼ NPT	1½ NPT	2 NPT
Pilot air connection 12 for variant PO		¼ NPT			
Supply pressure [psi]		12 ... 309			
Pressure regulation range	D6 [psi]	4.4 ... 103			
	D7 [psi]	7.4 ... 176			
	D8 [psi]	7.4 ... 235			
Max. hysteresis [psi]		5.9			

1) Dependent on port plate selected, must be ordered separately as an accessory → 1095

Standard Nominal Flow Rate q _N ²⁾ [scfm]				
Pneumatic connection 1, 2	1 NPT	1¼ NPT	1½ NPT	2 NPT
In main flow direction 1 → 2	458.9	476.6	564.8	776.6

2) Dependent on port plate selected, must be ordered separately as an accessory → 1095
Measured at p₁ = 147 psi and p₂ = 88 psi, Δp = 7.4 psi

Operating and Environmental Conditions	
Operating medium	Compressed air, air quality class 5.7.– to DIN ISO 8573-1
Ambient temperature [°F]	14 ... 140
Temperature of medium [°F]	14 ... 140
Storage temperature [°F]	14 ... 140
Assembly position	Any
Corrosion resistance CRC ³⁾	2

3) Corrosion resistance class 2 according to Festo standard 940 070
Components requiring moderate corrosion resistance. Externally visible parts with primarily decorative surface requirements which are in direct contact with a normal industrial environment or media such as coolants or lubricating agents.

Weights [lb]	
Product weight	8.00

- Wearing parts kits → 1098
- For spare parts go to: www.festo.com/en/spare_parts_service

Pressure Regulators MS12N-LR – Inch Series

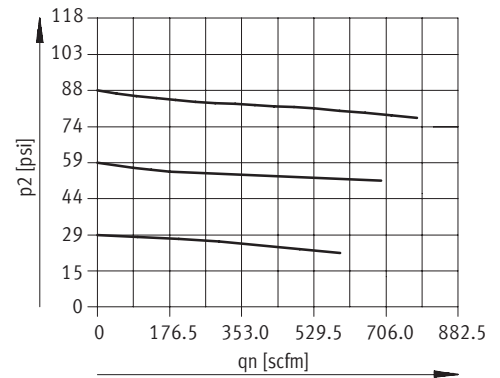
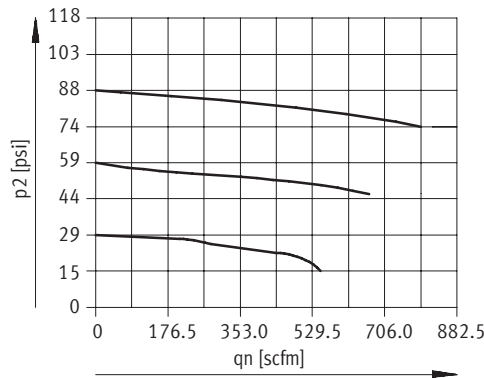
Technical Data

FESTO

Standard Flow Rate q_n as a Function of Output Pressure p_2

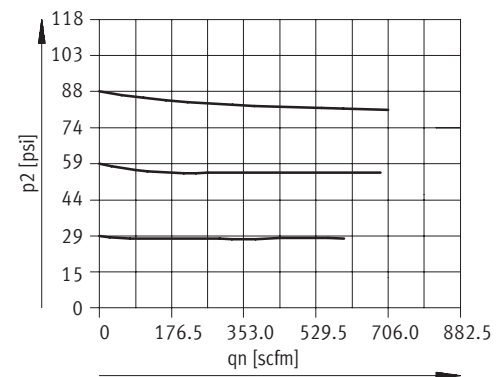
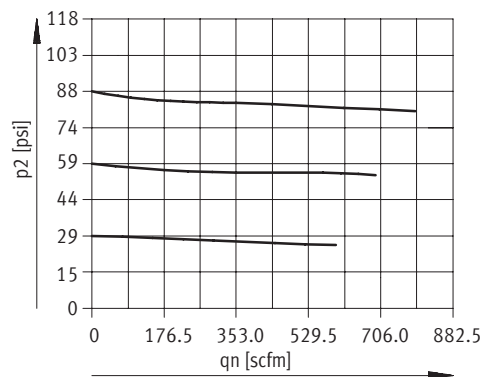
With port plate MS12-AGF Pneumatic connection 1NPT	With port plate MS12-AGG Pneumatic connection 1¼NPT
---	--

Primary pressure $p_1 = 147$ psi



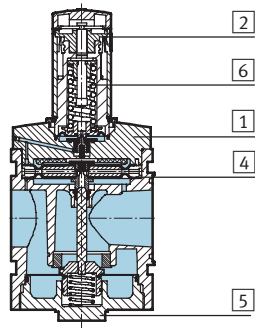
With port plate MS12-AGH Pneumatic connection 1½NPT	With port plate MS12-AGI Pneumatic connection 2NPT
--	---

Primary pressure $p_1 = 147$ psi



Materials

Sectional view



Pressure regulator		
1	Body	Die-cast aluminum
2	Regulating knob	Polyamide/polyacetate
4	Diaphragm	Nitrile rubber
5	Bottom cap	Wrought aluminum alloy
6	Springs	Steel
-	Seals	Nitrile rubber
Note on materials		Free of copper and PTFE only with cover plate VS

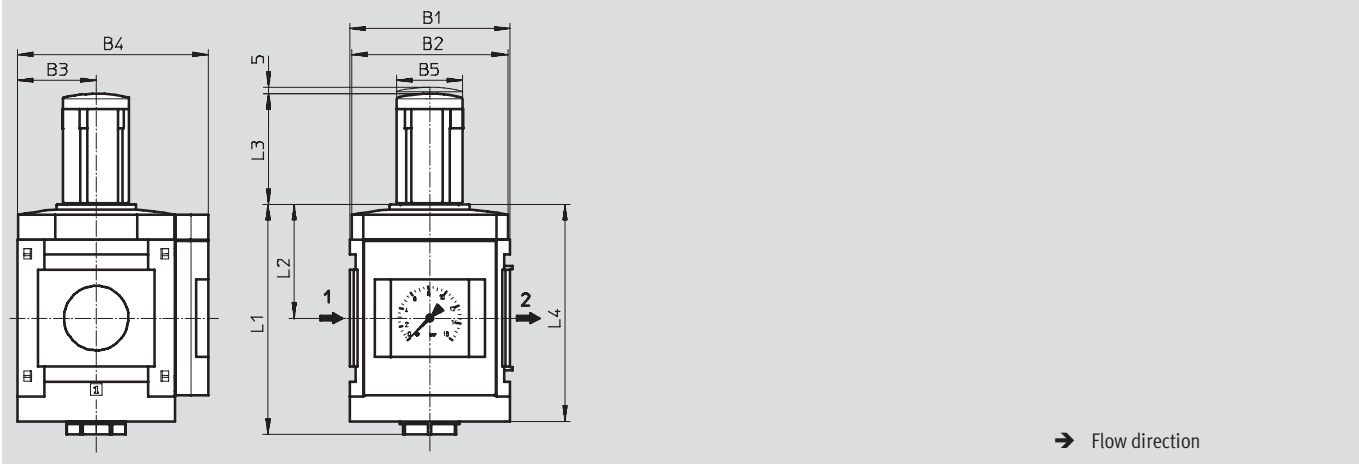
Pressure Regulators MS12N-LR – Inch Series

Dimensional Drawings

Dimensions¹⁾ – Standard

Download CAD Data → www.festo.com/us/cad

With pressure gauge, display unit [psi], long rotary knob



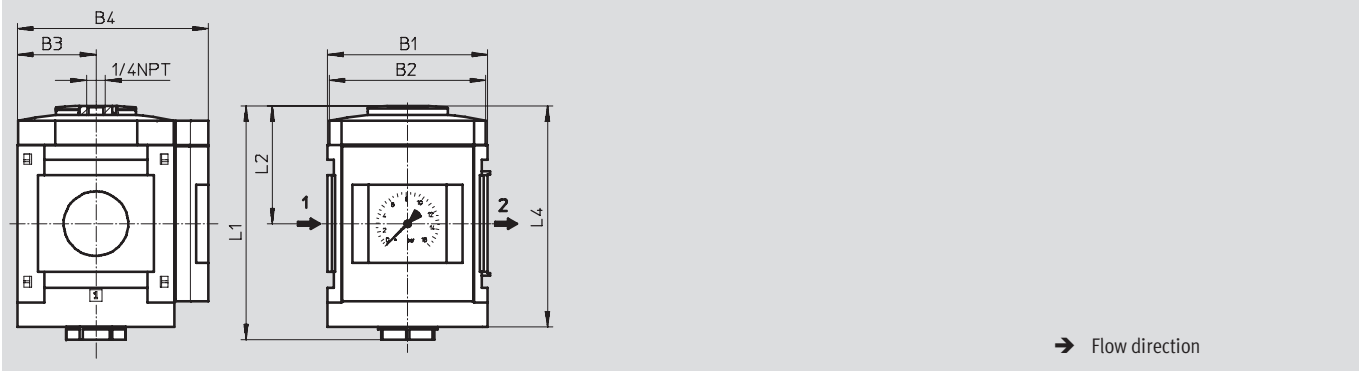
B1	B2	B3	B4	B5	L1	L2	L3	L4
4.88	4.80	2.40	5.83	2.01	7.01	3.46	3.39	6.61

1) Dimensions are in inches, unless otherwise noted.

Dimensions¹⁾ – Alternative Operating Principle

Download CAD Data → www.festo.com/us/cad

Pneumatically actuated PO, with pressure gauge, display unit [psi]



Type	B1	B2	B3	B4	L1	L2	L4
MS12-LR-...-PO	4.88	4.80	2.40	5.83	7.13	3.58	6.73

1) Dimensions are in inches, unless otherwise noted.

Pressure Regulators MS12N-LR – Inch Series

Dimensional Drawings, Ordering Data – Pre-configured Products

FESTO

Dimensions¹⁾ – Pressure Gauge Alternatives

Cover plate VS

Download CAD Data → www.festo.com/us/cad

Adapter A4 for EN pressure gauge 1/4, without pressure gauge

Type	B3	B4	D4
MS12-LR-...-VS	2.40	5.83	–
MS12-LR-...-A4	2.40	5.83	G ¹ / ₄

1) Dimensions are in inches, unless otherwise noted.

Dimensions¹⁾ – Rotary Knob

Long, lockable LD-AS

Type	B5	B6	L3
MS12-LR-...-LD-AS	2.54	1.54	3.76

1) Dimensions are in inches, unless otherwise noted.

Ordering Data				
Pressure gauge				
Connection	Long rotary knob, can be locked using accessories, pressure regulation range 7.4 ... 176 psi			Alternative operating principle, pressure regulation range 7.4 ... 235 psi
	Part No.	Type	LT	Part No. Type LT
1NPT ... 2NPT ²⁾	537148	MS12-LR-G-D7-LD-AS	1D	541680 MS12-LR-G-D8-PO Q

LT = Lead time 1D typically ships same day/next day 1W typically ships within 1 week Q request a quote for lead time

2) Port plate must be ordered separately as an accessory → 1095

Pressure Regulators MS12N-LR – Inch Series

Ordering Data – Configurable Products

FESTO

Mandatory Data →

Part No.	Series	Size	Thread	Function	Connection size	Pressure regulation range
535024	MS	12	N	LR	AQT AQU AQV AQW G	D6 D7 D8
Order example						
535024	MS	12	N	LR	G	D8

Ordering Table						
Grid dimension [mm]		124			Conditions	Code
M	Part No.	535024				
	Series	Standard				MS
	Size	12				12
	Thread	NPT thread				N
	Function	Pressure regulator				-LR
	Connection size	Port plate 1 NPT (dimensions → 1095)				-AQT
		Port plate 1¼ NPT (dimensions → 1095)				-AQU
		Port plate 1½ NPT (dimensions → 1095)				-AQV
		Port plate 2 NPT (dimensions → 1095)				-AQW
		Module without connecting thread, without port plate				-G
	Pressure regulation range	4.4 ... 103 psi				-D6
		7.4 ... 176 psi				-D7
		7.4 ... 235 psi				-D8

Transfer order code

535024	MS	12	N	LR		
--------	----	----	---	----	--	--

Pressure Regulators MS12N-LR – Inch Series

Ordering Data – Configurable Products

FESTO

0 Options

Pressure gauge alternatives	Alternative pressure gauge scale	Rotary knob	Security	Alternative operating principle	Type of mounting	Reverse flow direction
VS A4	BAR MPa	LD	AS	PO	WP	Z
- VS	-	- LD	- AS	-	-	- Z

Ordering Table

Grid dimension	[mm]	124	Conditions	Code	Enter code
0	Pressure gauge alternatives	Cover plate		-VS	
		Adapter plate for EN pressure gauge 1/4, without pressure gauge		-A4	
	Alternative pressure gauge scale	bar	1	-BAR	
		MPa	1	-MPA	
	Rotary knob	Long rotary knob	2	-LD	
	Security	Lockable rotary knob		-AS	
	Alternative operating principle	Pneumatically actuated	3	-PO	
	Type of mounting	Mounting bracket (dimensions → 1096)	4	-WP	
	Reverse flow direction	Flow direction from right to left		-Z	

1 **BAR, MPA** Not with pressure gauge alternatives VS, A4

2 **LD** Must be selected if alternative operating principle PO has not been selected

3 **PO** Not with rotary knob LD.

Not with security AS

4 **WP** Only with port plate AQT, AQU, AQV or AQW

Transfer order code

- - - - - - -

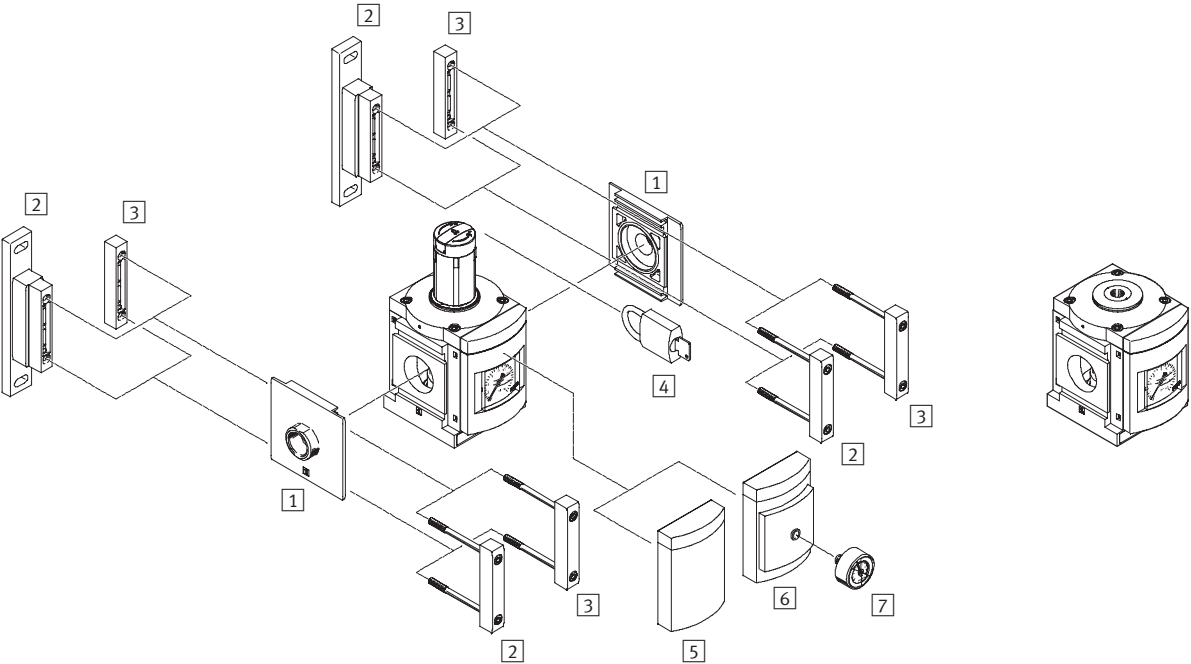
Pressure Regulators MS12N-LR – Inch Series

Accessories Overview

Mounting Attachments and Accessories

Standard

Variant PO
pneumatically actuated



Mounting Attachments and Accessories		→ Page
1	Port plate MS12-AQ...	1095
2	Mounting bracket MS12-WP	1096
3	Body connector MS12-MV	1095
4	Padlock (except variant PO) LRVS-D	1097
5	Cover plate VS	1093
6	Adapter for EN pressure gauge 1/4 A4	1093
7	Pressure gauge MA	1097

Pressure Regulators MS12N-LR – Inch Series

Accessories

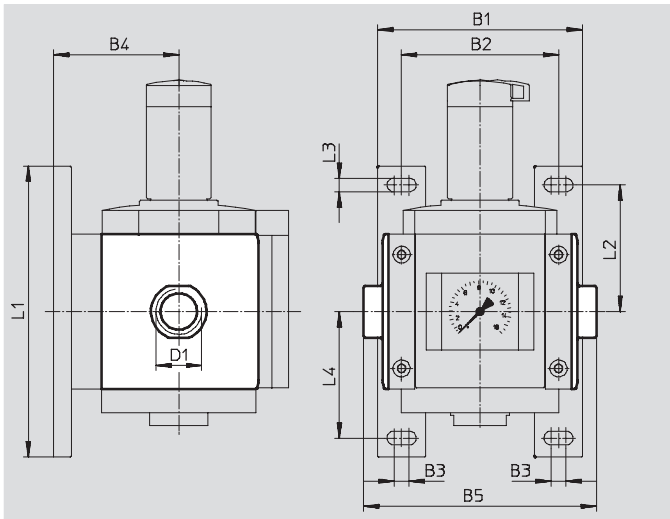
1 Port plate MS12-AQ...

- Adapter for pneumatic connection

Material:

Die-cast aluminum

Free of copper and PTFE



Dimensions and Ordering Data												
B1	B2	B3	B4	B5	D1	L1	L2	L3	L4	Weight [lb]	Part No.	Type
6.38	4.88	0.47	3.90	7.24	1 NPT	9.06	3.94	0.43	3.94	2.60	537139	MS12-AQT
				7.24	1¼ NPT						537140	MS12-AQU
				7.24	1½ NPT						537141	MS12-AQV
				7.72	2 NPT						537142	MS12-AQW

3 Body connector MS12-MV

- For connecting modules

Material:

Die-cast aluminum,

Free of copper and PTFE



Ordering Data			
Size	Weight [lb]	Part No.	Type
MS12	1.00	537134	MS12-MV

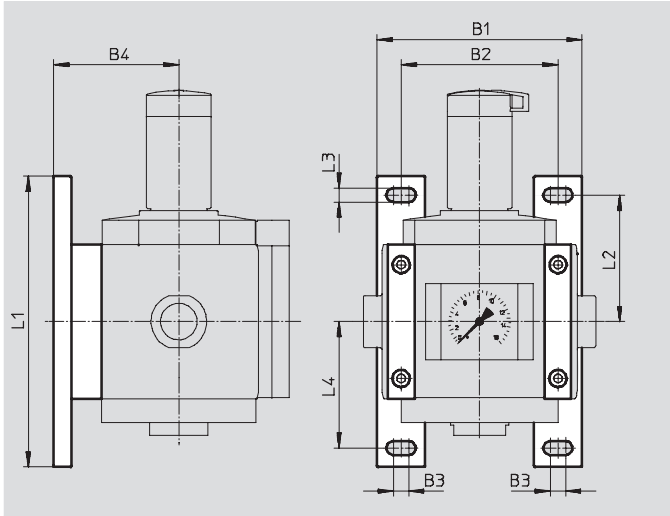
Pressure Regulators MS12N-LR – Inch Series

Accessories

3 Mounting bracket MS12-WP

- To connect the modules for wall mounting
- In combination with a port plate for mounting an individual unit on a wall

Material:
Die-cast aluminum
Free of copper and PTFE




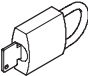
Dimensions and Ordering Data											
Size	B1	B2	B3	B4	L1	L2	L3	L4	Weight [[b]	Part No.	Type
MS12	6.38	4.88	0.47	3.90	9.06	3.94	0.43	3.94	1.40	537133	MS12-WP

Pressure Regulators MS12N-LR – Inch Series

Accessories

FESTO

7 Ordering Data – Pressure Gauge MA					Technical data → www.festo.com/catalog/ma	
	Nominal size	Pneumatic connection	Indicating range		Part No.	Type
			[bar]	[psi]		
	Pressure gauge MA, DIN EN 837-1					
	1.57	R¼	0 ... 16	0 ... 232	187080	MA-40-16-R¼-EN
	Pressure gauge MA, DIN EN 837-1, with red-green range					
	1.97	R¼	–	0 ... 232	526790	MA-50-232-R¼-PSI-E-RG

4 Ordering Data – Padlock LRV5-D				
	Description	Weight [lb]	Part No.	Type
	for regulators, filter/regulators and manual on-off valves	0.24	193786	LRV5-D

Pressure Regulators MS12N-LR – Inch Series

Replacement Parts

FESTO

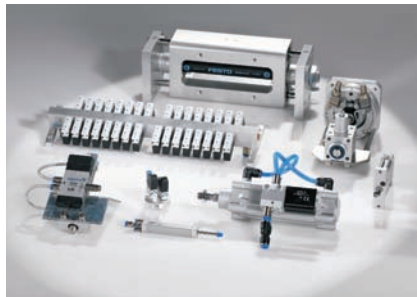
Ordering Data – Wearing Parts Kits			
Size	Description	Part No.	Type
MS12	Snap-ring, membrane, bellows, O-rings, screws, stem	673586	MS12-LR/LFR

- For spare parts go to: www.festo.com/en/spare_parts_service

Product Range and Company Overview

A Complete Suite of Automation Services

Our experienced engineers provide complete support at every stage of your development process, including: conceptualization, analysis, engineering, design, assembly, documentation, validation, and production.



Custom Automation Components

Complete custom engineered solutions



Custom Control Cabinets

Comprehensive engineering support and on-site services



Complete Systems

Shipment, stocking and storage services

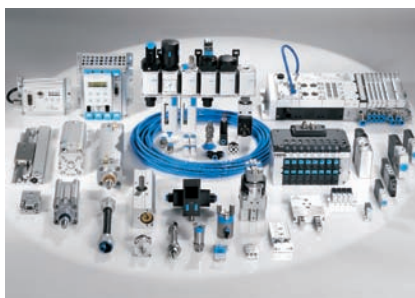
The Broadest Range of Automation Components

With a comprehensive line of more than 30,000 automation components, Festo is capable of solving the most complex automation requirements.



Electromechanical

Electromechanical actuators, motors, controllers & drives



Pneumatics

Pneumatic linear and rotary actuators, valves, and air supply



PLCs and I/O Devices

PLC's, operator interfaces, sensors and I/O devices

Supporting Advanced Automation... As No One Else Can!

Festo is a leading global manufacturer of pneumatic and electromechanical systems, components and controls for industrial automation, with more than 11,500 employees in 56 national headquarters serving more than 180 countries. For more than 80 years, Festo has continuously elevated the state of manufacturing with innovations and optimized motion control solutions that deliver higher performing, more profitable automated manufacturing and processing equipment. Our dedication to the advancement of automation extends beyond technology to the education and development of current and future automation and robotics designers with simulation tools, teaching programs, and on-site services.

Quality Assurance, ISO 9001 Certification

Festo Corporation is committed to provide Festo products and services that will meet or exceed our customers' requirements in product quality, delivery, customer service and satisfaction.

All Festo locations within the United States are registered to ISO 9001.



© Copyright 2007, Festo Corporation. While every effort is made to ensure that all dimensions and specifications are correct, Festo cannot guarantee that publications are completely free of any error, in particular typing or printing errors. Accordingly, Festo cannot be held responsible for the same. For Liability and Warranty conditions, refer to our "Terms and Conditions of Sale", available from your local Festo office. All rights reserved. No part of this publication may be reproduced, distributed, or transmitted in any form or by any means, electronic, mechanical, photocopying or otherwise, without the prior written permission of Festo. All technical data subject to change according to technical update.

Festo North America

United States

Customer Resource Center

502 Earth City Expy., Suite 125
Earth City, MO 63045

For ordering assistance, or to find
your nearest Festo Distributor,

Call: 1.800.99.FESTO

Fax: 1.800.96.FESTO

Email: customer.service@us.festo.com

For technical support,

Call: 1.866.GO.FESTO

Fax: 1.800.96.FESTO

Email: product.support@us.festo.com

Headquarters

Festo Corporation
395 Moreland Road
P.O. Box 18023
Hauppauge, NY 11788
www.festo.com/us

Sales Offices

Appleton

N. 922 Tower View Drive, Suite N
Greenville, WI 54942

Boston

120 Presidential Way, Suite 330
Woburn, MA 01801

Chicago

1441 East Business Center Drive
Mt. Prospect, IL 60056

Dallas

1825 Lakeway Drive, Suite 600
Lewisville, TX 75057

Detroit - Automotive Engineering Center

2601 Cambridge Court, Suite 320
Auburn Hills, MI 48326

New York

395 Moreland Road
Hauppauge, NY 11788

Silicon Valley

2800 Collier Canyon Road
Livermore, CA 94550

Design and Manufacturing Operations



East: 395 Moreland Road, Hauppauge, NY 11788



Central: 1441 East Business Center Drive, Mt. Prospect, IL 60056



West: 2800 Collier Canyon Road, Livermore, CA 94550

Mexico

Headquarters

Festo Pneumatic, S.A.
Av. Ceylán 3, Col. Tequesquahuac
54020 Tlalnepantla, Edo. de México
Call: 011 52 [55] 53 21 66 00
Fax: 011 52 [55] 53 21 66 65
Email: festo.mexico@mx.festo.com
www.festo.com/mx



Canada

Headquarters

Festo Inc.
5300 Explorer Drive
Mississauga, Ontario L4W 5G4
Call: 1.905.624.9000
Fax: 1.905.624.9001
Email: info.ca@ca.festo.com
www.festo.com/ca



Festo Worldwide

Argentina Australia Austria Belarus Belgium Brazil Bulgaria Canada Chile China Colombia Croatia Czech Republic Denmark
Estonia Finland France Germany Great Britain Greece Hong Kong Hungary India Indonesia Iran Ireland Israel Italy Japan
Latvia Lithuania Malaysia Mexico Netherlands New Zealand Norway Peru Philippines Poland Romania Russia Serbia Singapore
Slovakia Slovenia South Africa South Korea Spain Sweden Switzerland Taiwan Thailand Turkey Ukraine United States Venezuela

www.festo.com