

Standard Filters MS12-LF – Metric Series

FESTO



Standard filters, with filtration grades of 5 microns or 40 microns, are equipped with a water separator that cleans the compressed air of impurities, rust, and condensate. For pre-filtering in pneumatic systems or for special applications.

- Pneumatic connection: G1, G1¼, G1½, G2
- Supply pressure
 - For manual drain: 0.8 ... 20 bar
 - For fully automatic drain: 2 ... 12 bar
 - For fully automatic drain, electrically actuated: 0.8 ... 16 bar
- Flow rate: 11,500 ... 16,000 l/min

Product Range Overview														
Type	Pneumatic connections	Filtration grade [µm]				Bowl guard	Bowl drain						Contamination control	Reverse flow
	Port plate	0.01	1	5	40	Metal bowl	Manual	Fully automatic	Electrical 24 V DC M12	Electrical 110 V AC with terminals	Electrical 230 V AC with terminals	Electrical 24 V DC with terminals	Differential pressure indicator	Flow direction from right to left
MS12	AG...	A	B	C	E	U	M	V	E1	E2	E3	E4	DA	Z
LF	G1, G1¼, G1½, G2	–	–	■	■	■	■	■	■	■	■	■	–	■

Features

- Sintered filter with centrifugal separation removes contamination, rust and condensate from the compressed air.
- High flow rate with minimal pressure drop
- Replaceable filter cartridges

Contents

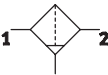
Technical Data	➔ 1100
Dimensional Drawings	➔ 1103
Ordering Data	➔ 1104
Accessories	➔ 1106

➔ www.festo.com/catalog/ms12-lf

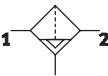
Standard Filters MS12-LF – Metric Series

Technical Data

ISO Symbol



Manual bowl drain



Fully automatic bowl drain



General Technical Data					
Pneumatic connection 1, 2 ¹⁾		G1	G1¼	G1½	G2
Filtration grade	[µm]	5 (air purity class at the output 3.7.– to DIN ISO 8573-1)			
		40 (air purity class at the output 5.7.– to DIN ISO 8573-1)			
Supply pressure	M	[bar] 0.8 ... 20 (manual drain)			
	V	[bar] 2 ... 12 (fully automatic drain)			
	E...	[bar] 0.8 ... 16 (fully automatic drain, electrically actuated)			

1) Dependent on port plate selected, must be ordered separately as an accessory → 1107

Note: This product conforms with the ISO 1179-1 standard and the ISO 228-1 standard.

Standard Nominal Flow Rate qnN ²⁾ [l/min]					
Pneumatic connection 1, 2		G1	G1¼	G1½	G2
Filtration grade	5 µm	11,500	12,500	13,500	14,000
	40 µm	12,500	13,000	14,000	16,000

2) Dependent on port plate selected, must be ordered separately as an accessory → 1107
Measured at p1 = 6 bar and Δp = 0.5 bar

Standard Filters MS12-LF – Metric Series

Technical Data

FESTO

Operating and Environmental Conditions			
Bowl drain	Manual M	Fully automatic V	Fully automatic, electrically actuated E...
Operating medium	Compressed air, air quality class 5.7.– to DIN ISO 8573-1		
Max. condensate volume [cm ³]	400		
Bowl guard	Metal bowl		
Ambient temperature [°C]	–10 ... +60	+5 ... +60	+1 ... +60
Temperature of medium [°C]	–10 ... +60	+5 ... +60	+1 ... +60
Storage temperature [°C]	–10 ... +60	–10 ... +60	+1 ... +60
Assembly position	Vertical ±5°		
Corrosion resistance CRC ¹⁾	2		

1) Corrosion resistance class 2 according to Festo standard 940 070

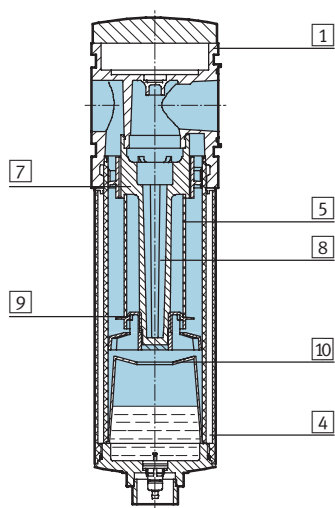
Components requiring moderate corrosion resistance. Externally visible parts with primarily decorative surface requirements which are in direct contact with a normal industrial environment or media such as coolants or lubricating agents.

Weights [g]	
With metal bowl	6,500
With metal bowl and fully automatic, electrically actuated bowl drain	7,200

- Filter cartridges → 1109
- For spare parts go to: www.festo.com/en/spare_parts_service

Materials

Sectional view



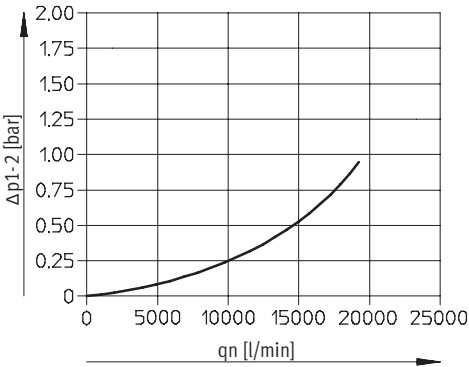
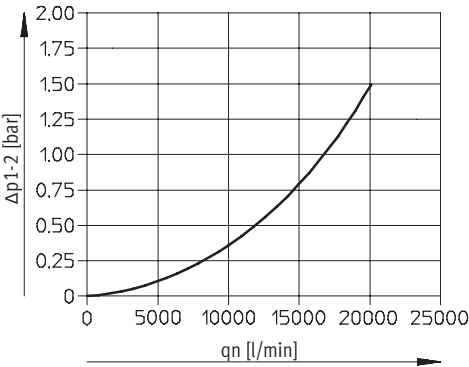
Filter		
1	Body	Die-cast aluminum
4	Metal bowl	Wrought aluminum alloy
5	Filter element	Sintered bronze
7	Spin disk	Polyacetate
8	Filter holder	Polyacetate
9	Separating plate	Polyacetate
10	Stabilizing disk	Polyacetate
–	Seals	Nitrile rubber

Standard Filters MS12-LF – Metric Series

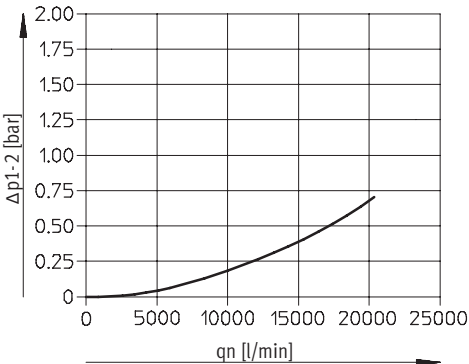
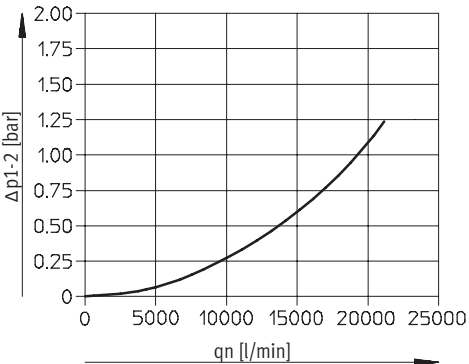
Technical Data

FESTO

Standard Flow Rate q_n as a Function of the Differential Pressure Δp_{1-2}		
Filtration grade 5 μm	With port plate MS12-AGF Pneumatic connection G1	With port plate MS12-AGI Pneumatic connection G2



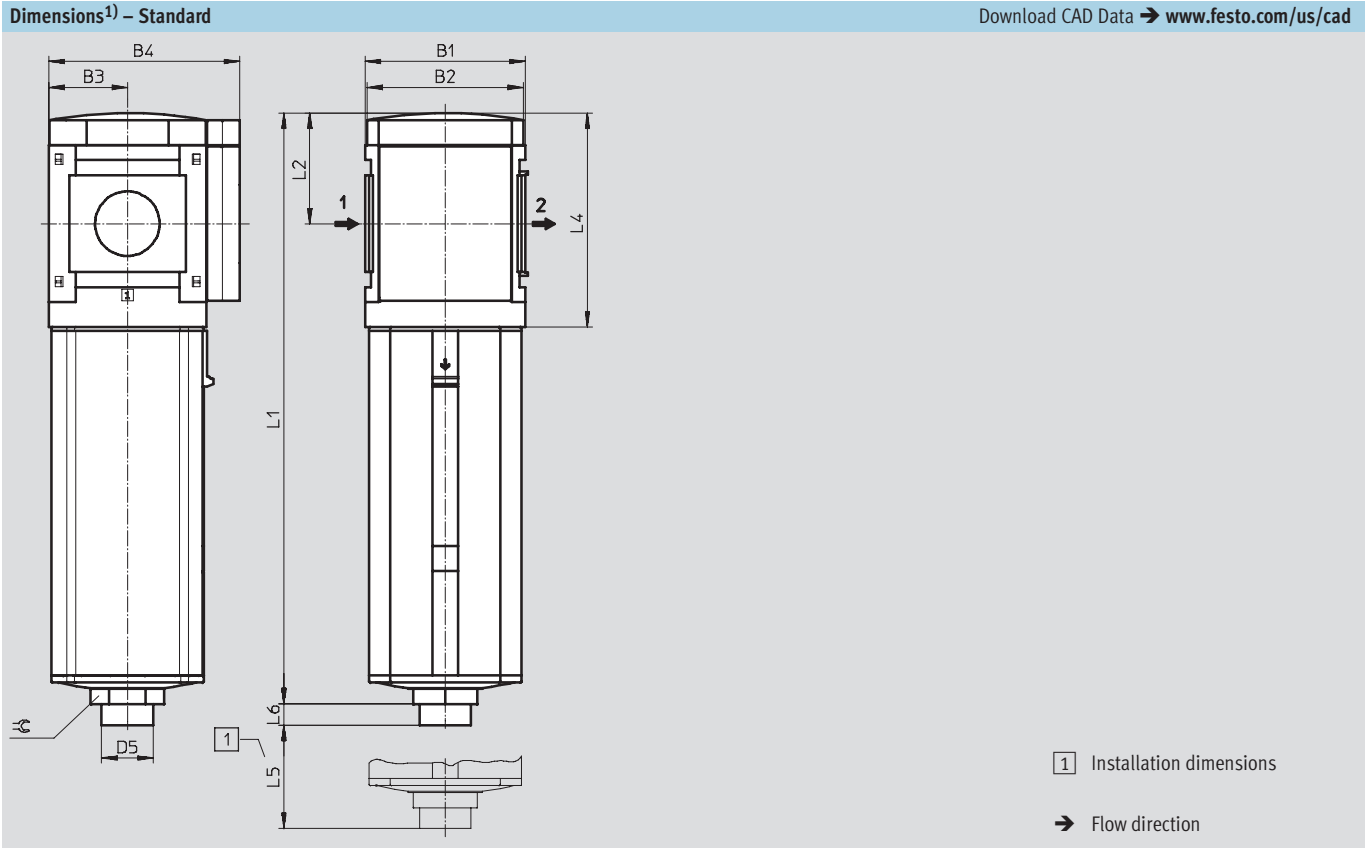
Filtration grade 40 μm	With port plate MS12-AGF Pneumatic connection G1	With port plate MS12-AGI Pneumatic connection G2
-----------------------------	---	---



Standard Filters MS12-LF – Metric Series

Dimensional Drawings

FESTO



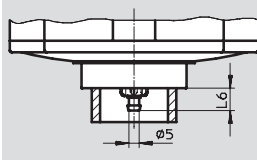
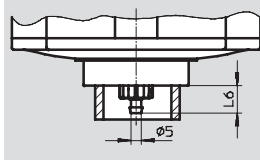
B1	B2	B3	B4	D5 Ø	L1	L2	L4	L5	L6	≈C
124	122	61	148	40	458	86	166	250	16	50

1) Dimensions are in millimeters, unless otherwise noted.

Standard Filters MS12-LF – Metric Series

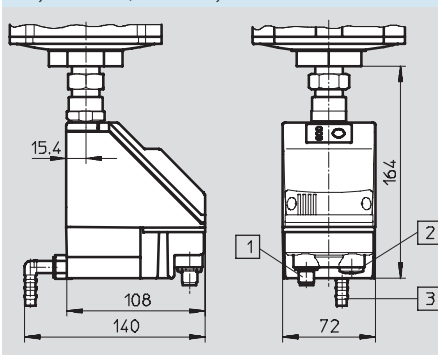
Dimensional Drawings, Ordering Data – Pre-configured Products

FESTO

Dimensions ¹⁾ – Bowl Drain		Download CAD Data → www.festo.com/us/cad	
Manual M		Fully automatic V	
	Barbed fitting for plastic tubing PCN-4		Barbed fitting for plastic tubing PCN-4

Type	L6
MS12-LF-...-M	11

Type	L6
MS12-LF-...-V	13

Fully automatic, electrically actuated E1 ... E4		Technical data PWEA → www.festo.com/catalog/pwea
		<p>1 Variant E1 PWEA-AP-... with M12x1 plug, 5-pin for SIM-M12-5GD-...</p> <p>2 Variant E2/E3/E4 PWEA-AC-... with cable conduit fitting Pg9</p> <p>3 Connection 360° rotatable for plastic tubing PUN-H-12x2-...</p>

1) Dimensions are in millimeters, unless otherwise noted.

Ordering Data						
Metal bowl						
Bowl drain	Connection	Filtration grade 5 µm			Filtration grade 40 µm	
		Part No.	Type	LT	Part No.	Type
Fully automatic	G1 ... G2 ²⁾	537152	MS12-LF-G-CUV	1D	537151	MS12-LF-G-EUV

LT = Lead time 1D typically ships same day/next day 1W typically ships within 1 week Q request a quote for lead time

2) Port plate must be ordered separately as an accessory → 1107

Note: This product conforms with the ISO 1179-1 standard and the ISO 228-1 standard.

Standard Filters MS12-LF – Metric Series

Ordering Data – Configurable Products



M Mandatory Data								O Options	
Part No.	Series	Size	Function	Connection size	Filtration grade	Bowl	Bowl drain	Type of mounting	Reverse flow direction
535023	MS	12	LF	AGF AGG AGH AGI G	E C	U	M V E1 E2 E3 E4	WP	Z
Order example									
535023	MS	12	- LF	- G	- E	- U	- V	-	-

Ordering Table									
Grid dimension		[mm]	124	Conditions		Code	Enter code		
M	Part No.	535023							
	Series	Standard				MS		MS	
	Size	12				12		12	
	Function	Filter				-LF		-LF	
	Connection size	Port plate G1 (dimensions → 1107)				-AGF			
		Port plate G1¼ (dimensions → 1107)				-AGG			
		Port plate G1½ (dimensions → 1107)				-AGH			
		Port plate G2 (dimensions → 1107)				-AGI			
		Module without connecting thread, without port plate				-G			
	Filtration grade	40 µm				-E			
		5 µm				-C			
	Bowl	Metal bowl				-U		-U	
	Bowl drain	Manual				-M			
		Fully automatic (P1 max. 12 bar)				-V			
		External fully automatic bowl drain, electrical, 24 V DC, M12				-E1			
		External fully automatic bowl drain, electrical, 110 V AC, terminals				-E2			
		External fully automatic bowl drain, electrical, 230 V AC, terminals				-E3			
		External fully automatic bowl drain, electrical, 24 V DC, terminals				-E4			
O	Type of mounting	Mounting bracket (dimensions → 1108)			1	-WP			
	Reverse flow direction	Flow direction from right to left				-Z			

1 WP Only with port plate AGF, AGG, AGH or AGI

Transfer order code

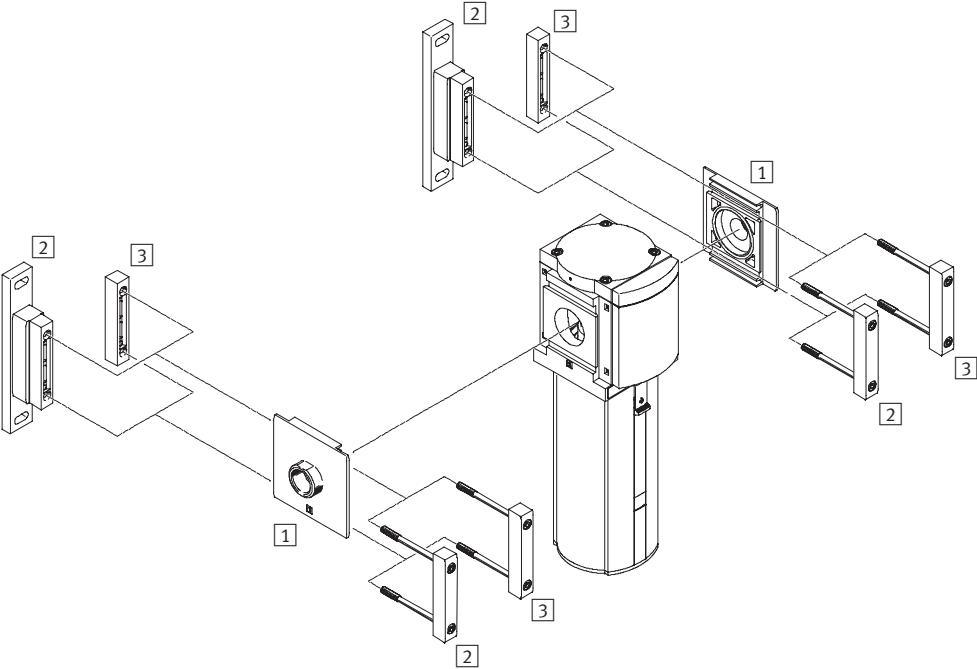
535023	MS	12	- LF	-		-		- U	-		-		-	
--------	----	----	------	---	--	---	--	-----	---	--	---	--	---	--

Standard Filters MS12-LF – Metric Series

Accessories Overview



Mounting Attachments and Accessories



Mounting Attachments and Accessories		→ Page
1	Port plate MS12-AG...	1107
2	Mounting bracket MS12-WP	1108
3	Body connector MS12-MV	1107

Standard Filters MS12-LF – Metric Series

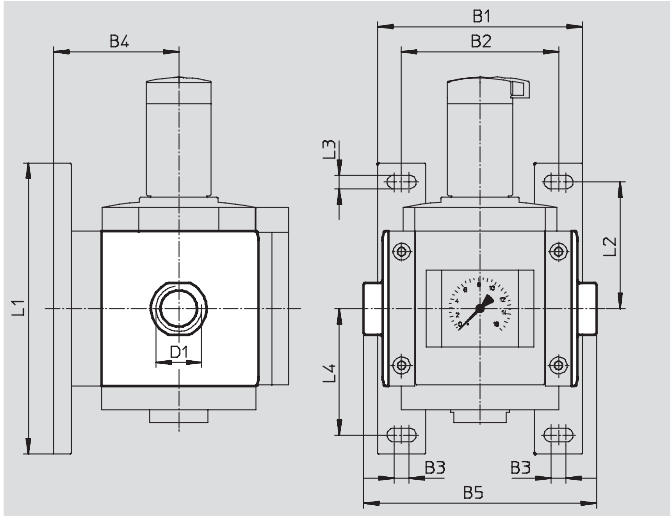


Accessories

1 Port plate MS12-AG...

- Adapter for pneumatic connection

Material:
Die-cast aluminum
Free of copper and PTFE



Dimensions and Ordering Data												
B1	B2	B3	B4	B5	D1	L1	L2	L3	L4	Weight [g]	Part No.	Type
162	124	12	99	184	G1	230	100	11	100	1,300	537135	MS12-AGF
				184	G1¼						537136	MS12-AGG
				184	G1½						537137	MS12-AGH
				196	G2						537138	MS12-AGI

3 Body connector MS12-MV

- For connecting modules

Material:
Die-cast aluminum,
Free of copper and PTFE



Ordering Data			
Size	Weight [g]	Part No.	Type
MS12	500	537134	MS12-MV

Filters MS12-LF/LFM/LFX – Metric Series

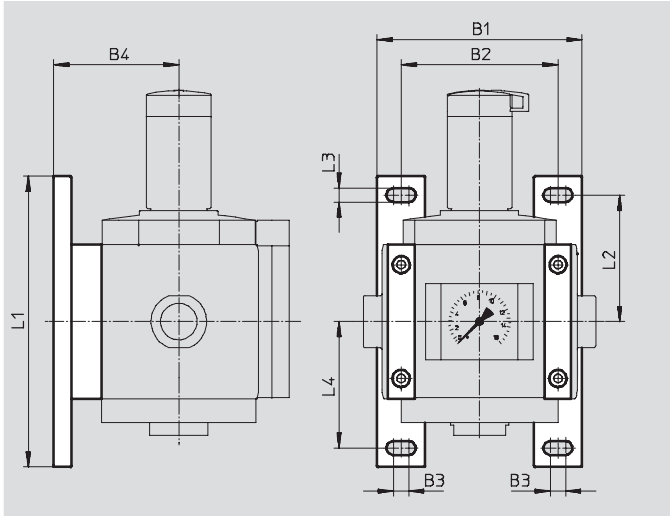


Accessories

2 Mounting bracket MS12-WP

- To connect the modules for wall mounting
- In combination with a port plate for mounting an individual unit on a wall

Material:
Die-cast aluminum
Free of copper and PTFE



Dimensions and Ordering Data											
Size	B1	B2	B3	B4	L1	L2	L3	L4	Weight [g]	Part No.	Type
MS12	162	124	12	99	230	100	11	100	700	537133	MS12-WP

Standard Filters MS12-LF – Metric Series

Replacement Parts



Ordering Data – Filter Cartridges			
Size	Filtration grade [µm]	Part No.	Type
MS12	5	537143	MS12-LFP-C
	40	537144	MS12-LFP-E

- For spare parts go to: www.festo.com/en/spare_parts_service

Standard Filters MS12N-LF – Inch Series

FESTO



Standard filters, with filtration grades of 5 microns or 40 microns, are equipped with a water separator that cleans the compressed air of impurities, rust, and condensate. For pre-filtering in pneumatic systems or for special applications.

- Pneumatic connection: 1 NPT, 1¼ NPT, 1½ NPT, 2 NPT
- Supply pressure
 - For manual drain: 12 ... 294 psi
 - For fully automatic drain: 29 ... 176 psi
 - For fully automatic drain, electrically actuated: 12 ... 235 psi
- Flow rate: 406.0 ... 564.8 scfm

Product Range Overview														
Type	Pneumatic connections	Filtration grade [µm]				Bowl guard	Bowl drain						Contamination control	Reverse flow
	Port plate	0.01	1	5	40	Metal bowl	Manual	Fully automatic	Electrical 24 V DC M12	Electrical 110 V AC with terminals	Electrical 230 V AC with terminals	Electrical 24 V DC with terminals	Differential pressure indicator	Flow direction from right to left
MS12N	AG...	A	B	C	E	U	M	V	E1	E2	E3	E4	DA	Z
LF	1 NPT, 1¼ NPT, 1½ NPT, 2 NPT	–	–	■	■	■	■	■	■	■	■	■	–	■

Features

- Sintered filter with centrifugal separation removes contamination, rust and condensate from the compressed air.
- High flow rate with minimal pressure drop
- Replaceable filter cartridges

Contents

Technical Data	➔ 1112
Dimensional Drawings	➔ 1115
Ordering Data	➔ 1116
Accessories	➔ 1118

➔ www.festo.com/catalog/ms12n-lf

Standard Filters MS12N-LF – Inch Series

Technical Data

FESTO

ISO Symbol



Manual bowl drain



Fully automatic bowl drain



General Technical Data					
Pneumatic connection 1, 2 ¹⁾		1 NPT	1¼ NPT	1½ NPT	2 NPT
Filtration grade	[µm]	5 (air purity class at the output 3.7.– to DIN ISO 8573-1)			
		40 (air purity class at the output 5.7.– to DIN ISO 8573-1)			
Supply pressure	M [psi]	12 ... 294 (manual drain)			
	V [psi]	29 ... 176 (fully automatic drain)			
	E... [psi]	12 ... 235 (fully automatic drain, electrically actuated)			

1) Dependent on port plate selected, must be ordered separately as an accessory → 1119

Standard Nominal Flow Rate q _N ²⁾ [scfm]					
Pneumatic connection 1, 2		1 NPT	1¼ NPT	1½ NPT	2 NPT
Filtration grade	5 µm	406.0	441.3	476.6	494.2
	40 µm	441.3	458.9	494.2	564.8

2) Dependent on port plate selected, must be ordered separately as an accessory → 1119
Measured at p₁ = 88 psi and Δp = 7.4 psi

Standard Filters MS12N-LF – Inch Series

Technical Data

FESTO

Operating and Environmental Conditions			
Bowl drain	Manual M	Fully automatic V	Fully automatic, electrically actuated E...
Operating medium	Compressed air, air quality class 5.7.– to DIN ISO 8573-1		
Max. condensate volume [in ³]	24.40		
Bowl guard	Metal bowl		
Ambient temperature [°F]	14 ... 140	41 ... 140	34 ... 140
Temperature of medium [°F]	14 ... 140	41 ... 140	34 ... 140
Storage temperature [°F]	14 ... 140	14 ... 140	34 ... 140
Assembly position	Vertical ±5°		
Corrosion resistance CRC ¹⁾	2		

1) Corrosion resistance class 2 according to Festo standard 940 070

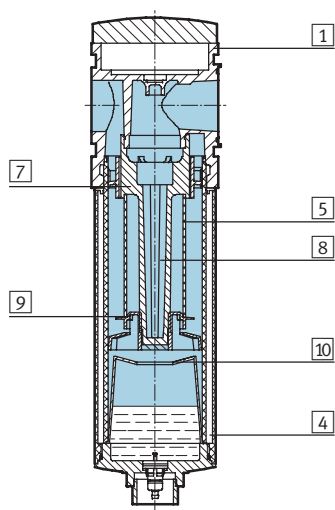
Components requiring moderate corrosion resistance. Externally visible parts with primarily decorative surface requirements which are in direct contact with a normal industrial environment or media such as coolants or lubricating agents.

Weights [lb]	
With metal bowl	13.00
With metal bowl and fully automatic, electrically actuated bowl drain	14.40

- Filter cartridges → 1121
- For spare parts go to: www.festo.com/en/spare_parts_service

Materials

Sectional view



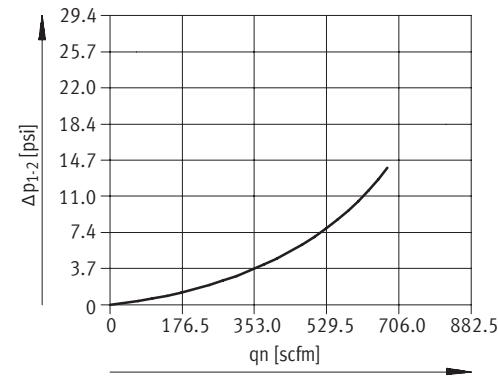
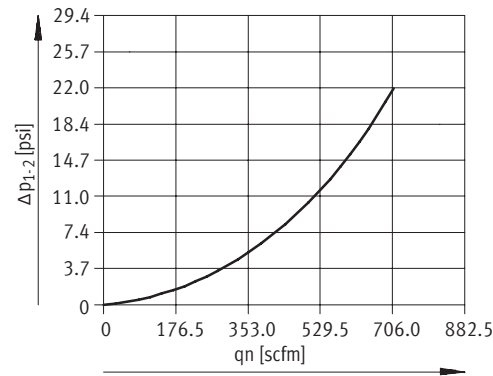
Filter		
1	Body	Die-cast aluminum
4	Metal bowl	Wrought aluminum alloy
5	Filter element	Sintered bronze
7	Spin disk	Polyacetate
8	Filter holder	Polyacetate
9	Separating plate	Polyacetate
10	Stabilizing disk	Polyacetate
–	Seals	Nitrile rubber

Standard Filters MS12N-LF – Inch Series

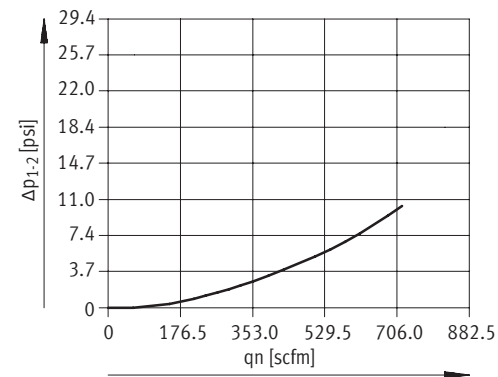
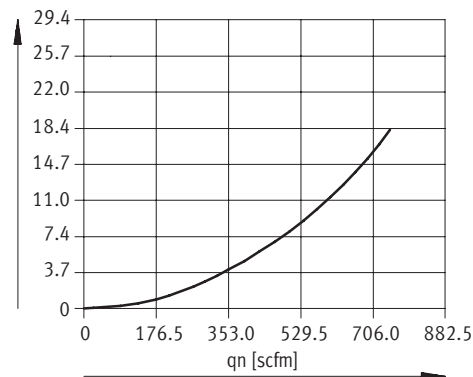
Technical Data

FESTO

Standard Flow Rate q_n as a Function of the Differential Pressure Δp_{1-2}		
Filtration grade 5 μm	With port plate MS12-AGF Pneumatic connection 1 NPT	With port plate MS12-AGI Pneumatic connection 2 NPT



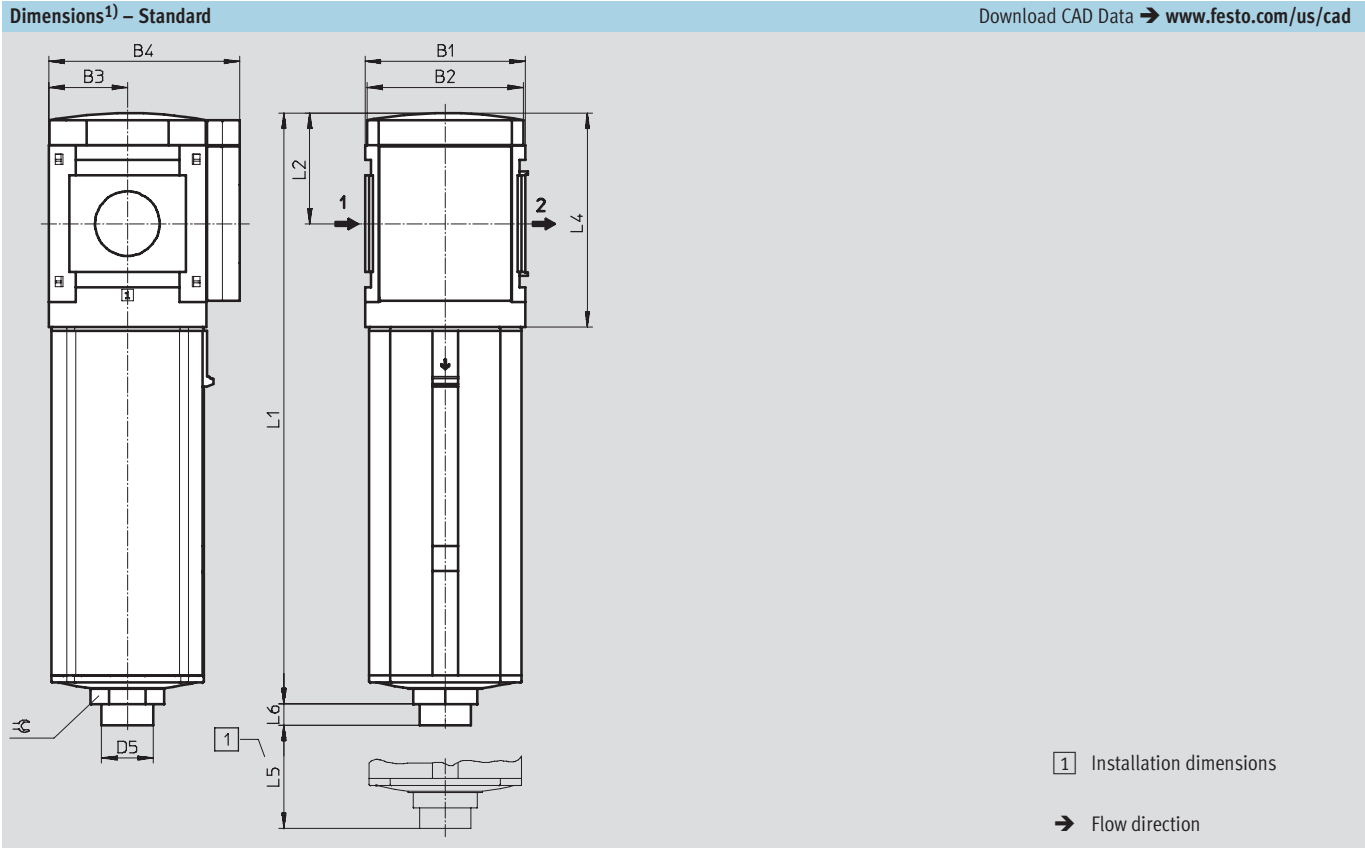
Filtration grade 40 μm	With port plate MS12-AGF Pneumatic connection 1 NPT	With port plate MS12-AGI Pneumatic connection 2 NPT
-----------------------------------	--	--



Standard Filters MS12N-LF – Inch Series



Dimensional Drawings



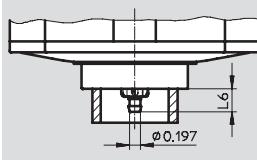
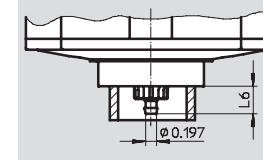
B1	B2	B3	B4	D5 Ø	L1	L2	L4	L5	L6	≈C
4.88	4.80	2.40	5.83	1.57	18.03	3.39	6.54	9.84	0.63	1.97

1) Dimensions are in inches, unless otherwise noted.

Standard Filters MS12N-LF – Inch Series

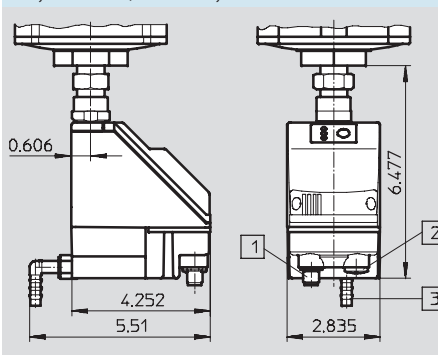
Dimensional Drawings, Ordering Data – Pre-configured Products

FESTO

Dimensions ¹⁾ – Bowl Drain		Download CAD Data → www.festo.com/us/cad	
Manual M		Fully automatic V	
	Barbed fitting for plastic tubing PCN-4		Barbed fitting for plastic tubing PCN-4

Type	L6
MS12-LF-...-M	0.43

Type	L6
MS12-LF-...-V	0.51

Fully automatic, electrically actuated E1 ... E4		Technical data PWEA → www.festo.com/catalog/pwea
		<p>1 Variant E1 PWEA-AP-... with M12x1 plug, 5-pin for SIM-M12-5GD-...</p> <p>2 Variant E2/E3/E4 PWEA-AC-... with cable conduit fitting Pg9</p> <p>3 Connection 360° rotatable for plastic tubing PUN-H-12x2-...</p>

1) Dimensions are in inches, unless otherwise noted.

Ordering Data							
Metal bowl							
Bowl drain	Connection	Filtration grade 5 µm			Filtration grade 40 µm		
		Part No.	Type	LT	Part No.	Type	LT
Fully automatic	1 NPT ... 2 NPT ²⁾	537152	MS12-LF-G-CUV	1D	537151	MS12-LF-G-EUV	1D

LT = Lead time 1D typically ships same day/next day 1W typically ships within 1 week Q request a quote for lead time

2) Port plate must be ordered separately as an accessory → 1119

Standard Filters MS12N-LF – Inch Series

Ordering Data – Configurable Products

FESTO

M Mandatory Data									O Options	
Part No.	Series	Size	Thread	Function	Connection size	Filtration grade	Bowl	Bowl drain	Type of mounting	Reverse flow direction
535026	MS	12	N	LF	AQT AQU AQV AQW G	E C	U	M V E1 E2 E3 E4	WP	Z
Order example										
535026	MS	12	N	- LF	- G	- E	- U	- V	-	-

Ordering Table						
Grid dimension		[mm]	124	Conditions	Code	Enter code
M	Part No.	535026				
	Series	Standard			MS	MS
	Size	12			12	12
	Thread	NPT thread			N	N
	Function	Filter			-LF	-LF
	Connection size	Port plate 1 NPT (dimensions ➔ 1119)			-AQT	
		Port plate 1¼ NPT (dimensions ➔ 1119)			-AQU	
		Port plate 1½ NPT (dimensions ➔ 1119)			-AQV	
		Port plate 2 NPT (dimensions ➔ 1119)			-AQW	
		Module without connecting thread, without port plate			-G	
	Filtration grade	40 µm			-E	
		5 µm			-C	
	Bowl	Metal bowl			-U	-U
	Bowl drain	Manual			-M	
		Fully automatic (P1 max. 176 psi)			-V	
		External fully automatic bowl drain, electrical, 24 V DC, M12			-E1	
		External fully automatic bowl drain, electrical, 110 V AC, terminals			-E2	
		External fully automatic bowl drain, electrical, 230 V AC, terminals			-E3	
		External fully automatic bowl drain, electrical, 24 V DC, terminals			-E4	
	O	Type of mounting	Mounting bracket (dimensions ➔ 1120)		1	-WP
Reverse flow direction		Flow direction from right to left			-Z	

1 WP Only with port plate AQT, AQU, AQV or AQW

Transfer order code

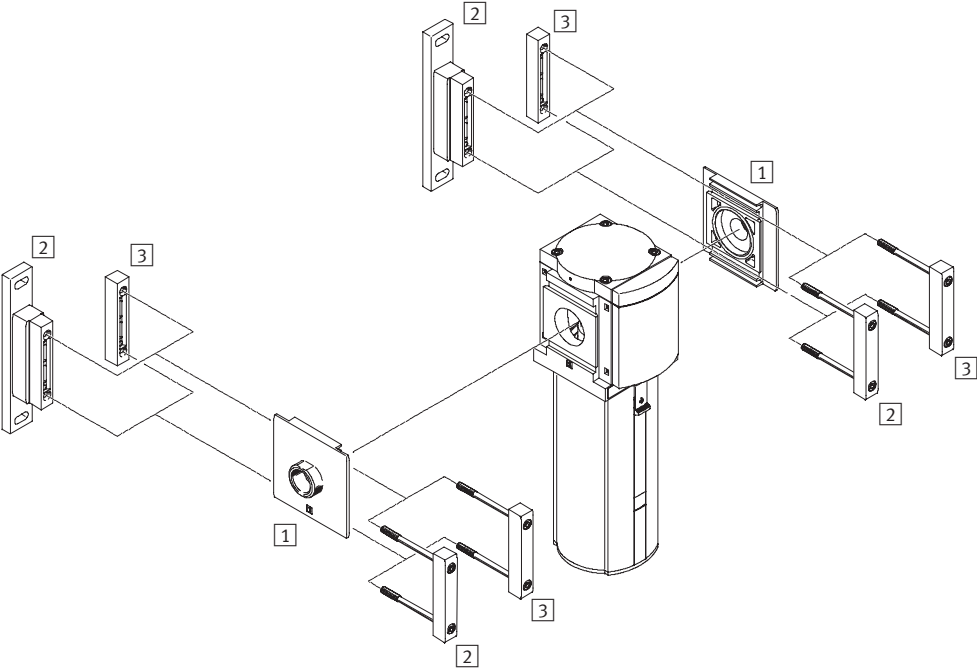
535026	MS	12	N	-	LF	-		-		-	U	-		-		-	
--------	----	----	---	---	----	---	--	---	--	---	---	---	--	---	--	---	--

Standard Filters MS12N-LF – Inch Series

Accessories Overview



Mounting Attachments and Accessories



Mounting Attachments and Accessories		→ Page
1	Port plate MS12-AQ...	1119
2	Mounting bracket MS12-WP	1120
3	Body connector MS12-MV	1119

Standard Filters MS12N-LF – Inch Series

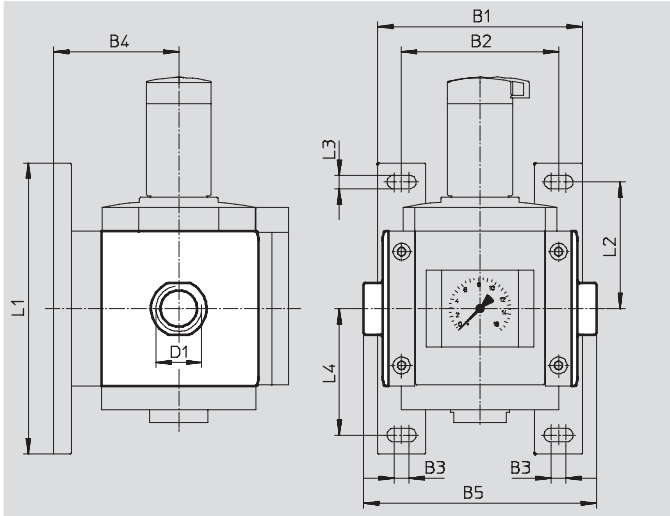


Accessories

1 Port plate MS12-AQ...

- Adapter for pneumatic connection

Material:
Die-cast aluminum
Free of copper and PTFE



Dimensions and Ordering Data												
B1	B2	B3	B4	B5	D1	L1	L2	L3	L4	Weight [[b]	Part No.	Type
6.38	4.88	0.47	3.90	7.24	1 NPT	9.06	3.94	0.43	3.94	2.60	537139	MS12-AQT
				7.24	1¼ NPT						537140	MS12-AQU
				7.24	1½ NPT						537141	MS12-AQV
				7.72	2 NPT						537142	MS12-AQW

3 Body connector MS12-MV

- For connecting modules

Material:
Die-cast aluminum,
Free of copper and PTFE



Ordering Data			
Size	Weight [[b]	Part No.	Type
MS12	1.00	537134	MS12-MV

Standard Filters MS12N-LF – Inch Series

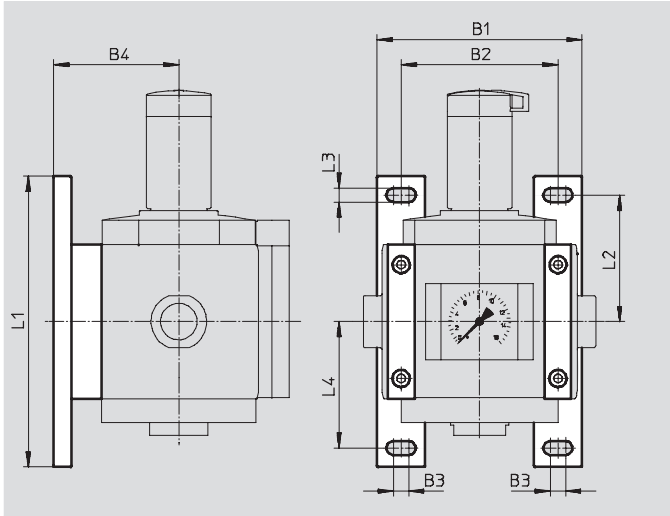


Accessories

2 Mounting bracket MS12-WP

- To connect the modules for wall mounting
- In combination with a port plate for mounting an individual unit on a wall

Material:
Die-cast aluminum
Free of copper and PTFE



Dimensions and Ordering Data											
Size	B1	B2	B3	B4	L1	L2	L3	L4	Weight [[b]	Part No.	Type
MS12	6.38	4.88	0.47	3.90	9.06	3.94	0.43	3.94	1.40	537133	MS12-WP

Standard Filters MS12N-LF – Inch Series

Replacement Parts



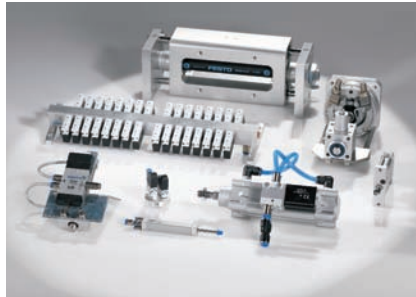
Ordering Data – Filter Cartridges			
Size	Filtration grade [µm]	Part No.	Type
MS12	5	537143	MS12-LFP-C
	40	537144	MS12-LFP-E

- For spare parts go to: www.festo.com/en/spare_parts_service

Product Range and Company Overview

A Complete Suite of Automation Services

Our experienced engineers provide complete support at every stage of your development process, including: conceptualization, analysis, engineering, design, assembly, documentation, validation, and production.



Custom Automation Components

Complete custom engineered solutions



Custom Control Cabinets

Comprehensive engineering support and on-site services



Complete Systems

Shipment, stocking and storage services

The Broadest Range of Automation Components

With a comprehensive line of more than 30,000 automation components, Festo is capable of solving the most complex automation requirements.



Electromechanical

Electromechanical actuators, motors, controllers & drives



Pneumatics

Pneumatic linear and rotary actuators, valves, and air supply



PLCs and I/O Devices

PLC's, operator interfaces, sensors and I/O devices

Supporting Advanced Automation... As No One Else Can!

Festo is a leading global manufacturer of pneumatic and electromechanical systems, components and controls for industrial automation, with more than 11,500 employees in 56 national headquarters serving more than 180 countries. For more than 80 years, Festo has continuously elevated the state of manufacturing with innovations and optimized motion control solutions that deliver higher performing, more profitable automated manufacturing and processing equipment. Our dedication to the advancement of automation extends beyond technology to the education and development of current and future automation and robotics designers with simulation tools, teaching programs, and on-site services.

Quality Assurance, ISO 9001 Certification

Festo Corporation is committed to provide Festo products and services that will meet or exceed our customers' requirements in product quality, delivery, customer service and satisfaction.

All Festo locations within the United States are registered to ISO 9001.



Festo North America

United States

Customer Resource Center

502 Earth City Expy., Suite 125
Earth City, MO 63045

For ordering assistance, or to find
your nearest Festo Distributor,

Call: 1.800.99.FESTO

Fax: 1.800.96.FESTO

Email: customer.service@us.festo.com

For technical support,

Call: 1.866.GO.FESTO

Fax: 1.800.96.FESTO

Email: product.support@us.festo.com

Headquarters

Festo Corporation
395 Moreland Road
P.O. Box 18023
Hauppauge, NY 11788
www.festo.com/us

Sales Offices

Appleton

N. 922 Tower View Drive, Suite N
Greenville, WI 54942

Boston

120 Presidential Way, Suite 330
Woburn, MA 01801

Chicago

1441 East Business Center Drive
Mt. Prospect, IL 60056

Dallas

1825 Lakeway Drive, Suite 600
Lewisville, TX 75057

Detroit - Automotive Engineering Center

2601 Cambridge Court, Suite 320
Auburn Hills, MI 48326

New York

395 Moreland Road
Hauppauge, NY 11788

Silicon Valley

2800 Collier Canyon Road
Livermore, CA 94550

Design and Manufacturing Operations



East: 395 Moreland Road, Hauppauge, NY 11788



Central: 1441 East Business Center Drive, Mt. Prospect, IL 60056



West: 2800 Collier Canyon Road, Livermore, CA 94550

Mexico

Headquarters

Festo Pneumatic, S.A.
Av. Ceylán 3, Col. Tequesquahuac
54020 Tlalnepantla, Edo. de México
Call: 011 52 [55] 53 21 66 00
Fax: 011 52 [55] 53 21 66 65
Email: festo.mexico@mx.festo.com
www.festo.com/mx



Canada

Headquarters

Festo Inc.
5300 Explorer Drive
Mississauga, Ontario L4W 5G4
Call: 1.905.624.9000
Fax: 1.905.624.9001
Email: info.ca@ca.festo.com
www.festo.com/ca



Festo Worldwide

Argentina Australia Austria Belarus Belgium Brazil Bulgaria Canada Chile China Colombia Croatia Czech Republic Denmark
Estonia Finland France Germany Great Britain Greece Hong Kong Hungary India Indonesia Iran Ireland Israel Italy Japan
Latvia Lithuania Malaysia Mexico Netherlands New Zealand Norway Peru Philippines Poland Romania Russia Serbia Singapore
Slovakia Slovenia South Africa South Korea Spain Sweden Switzerland Taiwan Thailand Turkey Ukraine United States Venezuela

www.festo.com