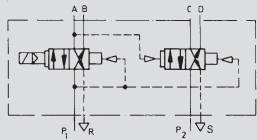


Solenoid-Actuated Valves for BV-50, -100, -200-... 8/2, 8-Ported, 4-Way, 2-Position Valves, G3/8 ISO

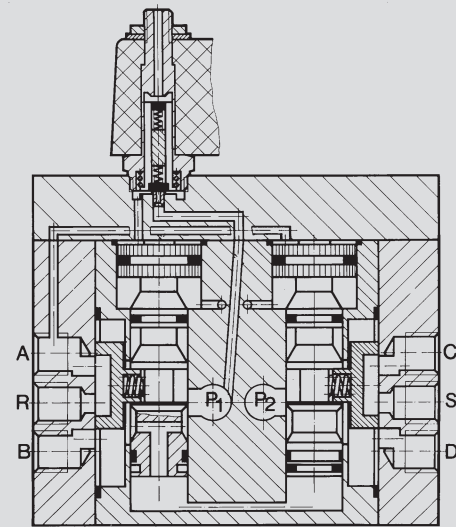
Single Solenoid Valve

Spring Return for Pneumatic Feed Unit
Type MLC-8-3/8-B



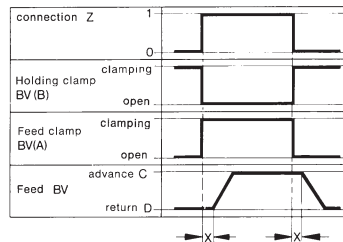
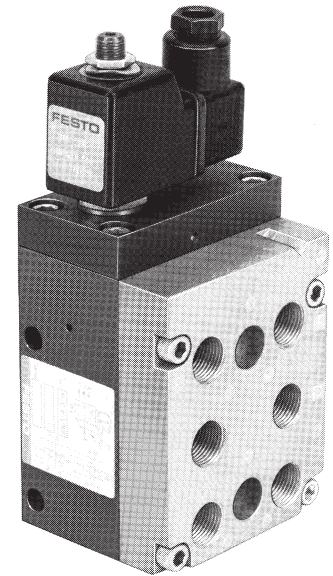
This valve controls the feed motion and alternate clamping of FESTO pneumatic feed units.

Different feed and clamping pressures are possible by varying pressures to P₁ and P₂.



Accessories

(Order separately)
Solenoid coil, Type MSG or MSW-...
Socket, Type MSSD-C or KME-...
See pages 938-939.



x = Time delay

The 2 X 4 way, 2 position directional control valve shifts when the solenoid is energized. The flow in the first 4 way, 2 position valve changes from P₁→B to P₁→A. When the pressure in line A has built up to at least 50% of the Pressure P₁, the second 4 way, 2 position valve will shift. The flow will then change from P₂→D to P₂→C. Similarly, the 4 way, 2 position directional control valves are returned by a differential piston area after the solenoid is deenergized. The delay between actuation of the two 4 way, 2 position valves allows the clamp jaws to be changed first, followed by the feed or return motion in a feed unit.

P₁ = Supply pressure for clamp cylinder
P₂ = Supply pressure for feed cylinder
D, C = Ports for feed cylinder
B, A = Ports for clamping cylinder
R, S = Exhaust

Order Number	4801 MLC-8-3/8-B	
Medium	Compressed air (filtered, lubricated or unlubricated)	
Mounting	Holes through housing	
Connection	G 3/8 ISO	
Orifice Size	3.5 in / 9 mm	
C _v Factor (P → A)	1.8 C _v / 1800 l/min	
Pressure Range*	30-150 psi / 2-10 bar	
Response Time at 90 psi / 6 bar	75 ms	
Ambient Temperature	23 to 104°F / -5 to 40°C	
Design	Slide valve, piloted	
Materials	Housing: Al, hard coat anodized. Seals: Buna N	
Weight	3.329 lb / 1.510 kg	
Direct Current	Standard Voltage	12, 24 V
	Available Voltage	6-240 V
Alternating Current	Standard Voltage	24, 42, 120, 220 V/50 Hz
	Available Voltage	6-380 V/50 or 60 Hz
Power Consumption	DC	12 W
	AC	Inrush 30 VA, holding 22 VA
ED Switching Time	100%	
Type of Protection	IP 65 (DIN 40050)	

* 14 to 140°F / -10 to +60°C temperature range of medium