

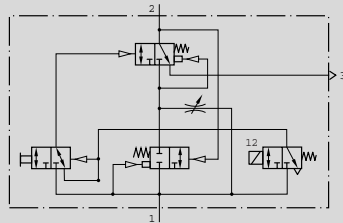
Valves for Special Applications

3/2 - 3 Way, 2 Position Valves G 1/4 to G 1/2

FESTO

Single Solenoid "Soft-Start" Valve

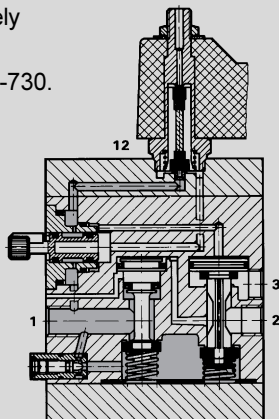
Type MFHE-3-...



Accessories:

Order separately

Solenoid coils,
see pages 729-730.



1 (P) = Supply
2 (A) = Outlet
3 (R) = Exhaust
12 (Z) = Control

Festo "Soft-start" valves are designed to provide slow pressure build-up in pneumatic systems preventing sudden high pressure air surges during start-up. Manual override is built in.

Features

Compact, corrosion resistant "soft-start" valves combine 3 components in a single unit: 3-way valve, "OR" valve and flow control valve. Adjustable metering screw varies the start-up air flow relative to the size and number of cylinders or volume downstream.

Operation

Energizing the solenoid initiates slow pressurization of the air system. Cylinders extend slowly to end position, preventing slamming at the end of stroke. When downstream pressure reaches 50% of operating pressure, the valve switches to full flow.

The manual override will actuate the slow pressurization function of the valve. It will remain actuated until manually reset, or a solenoid signal is applied. The manual override stem is keyed to prevent accidental actuation.

Note: Control voltage to downstream solenoid valves should only be applied after full operating pressure is attained.

Accessory: Mounting bracket

Order No. 150258 HR-1/4-S-B

150259 HR-3/8-S-B

150260 HR-1/2-S-B



See page 715 for dimensions.

Order Number	Part No./Type	14329 MFHE-3-1/4-B + Voltage	12908 MFHE-3-3/8 + Voltage	10421 MFHE-3-1/2 + Voltage
Medium		Compressed air (filtered, lubricated or unlubricated)		
Design		Poppet valve, piloted in one direction with return spring		
Mounting		4 through-holes in housing		
Connection		G 1/4 ISO	G 3/8 ISO	G 1/2 ISO
Orifice Size		0.32 in / 8 mm	0.35 in / 9 mm	0.47 in / 12 mm
Flow Rate (1 → 2) Full Flow		31.8 SCFM (900 l/min)	77.0 SCFM (2200 l/min)	105.9 SCFM (3000 l/min)
Flow Rate (1 → 2) Throttled		3.2 SCFM (90 l/min) max.	15.9 SCFM (450 l/min) max.	
Pressure Range		30-150 psi / 2-10 bar		
Response Time at Full Flow		On: 20 ms, OFF: 70 ms	On: 20 ms, Off: 94 ms	On: 28 ms, Off: 76 ms
Ambient Temperature		23 to 104°F / -5 to +40°C		
Medium Temperature		14 to 140°F / -10 to +60°C		
Materials		Housing: Glass fiber reinforced plastic. Seals: Buna N.		
Weight		1.21 lb / 0.550 kg	1.76 lb / 0.800 kg	2.21 lb / 1.0 kg
DC	Standard Voltage	12, 24V		
	Available Voltage	12 to 230V		
AC	Standard Voltage	24, 42, 110, 230V / 50 Hz or 50 to 60 Hz		
	Available Voltage	12 to 240V / 50 or 60 Hz		
Power Consumption		DC 4.5 W; AC holding 6 VA, inrush 7.5 VA		
Duty Cycle		100% continuous duty		
Type of Protection		IP 65 (DIN 40050)		

For solenoid coils,
see Pages 729-730.