

Solenoid Actuated Valves

3/2 - 3 Way, 2 Position Valves, G 1/8

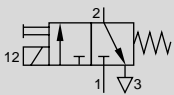
Single Solenoid Valve

Spring Return and Manual Override

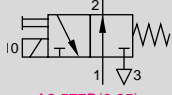
Type

MCH-3-1/8

MOCH-3-1/8



A2.577A(6.95)



A2.577B(6.95)

When the solenoid is energized, the valve shifts and remains shifted until the solenoid is deenergized.

Accessories:

Solenoids, see pages 732-733.

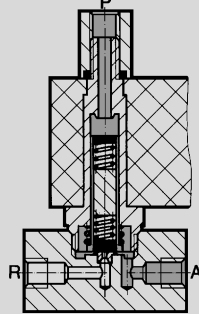
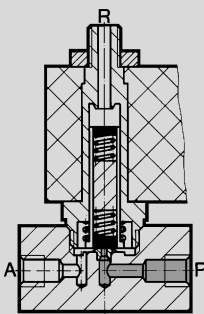
Sockets, Types MSSD-C, KMC-..., see pages 734-735.

LED inserts, Types MC-..., MCL-..., see pages 738-739.

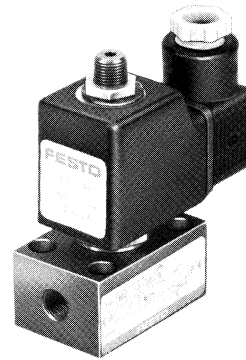
Example:

Type MCH-3-1/8

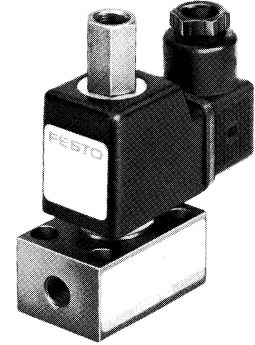
Type MOCH-3-1/8



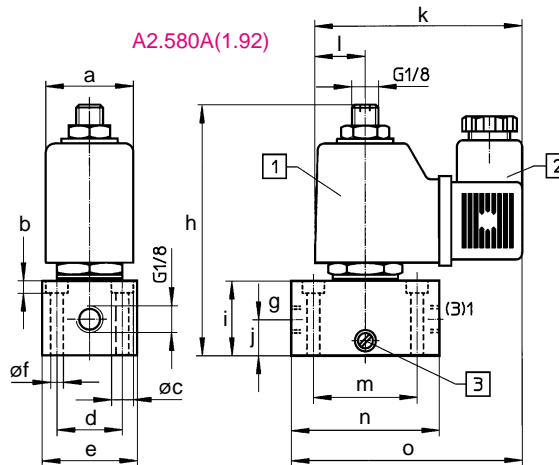
A2.580B(1.92)



MCH



MOCH



A2.580A(1.92)

- 1 Solenoid coil can be rotated
- 2 Plug can be turned 90°
- 3 Manual override

Dimensions

- a 1.16 in / 29.5 mm
- b 0.17 in / 4.2 mm
- c 0.29 in / 7.4 mm
- d 0.87 in / 22 mm
- e 1.26 in / 32 mm
- f 0.17 in / 4.3 mm
- g 0.07 in / 2 mm
- h 3.31 in / 84 mm
- i 0.98 in / 25 mm
- j 0.47 in / 12 mm
- k 2.76 in / 70 mm
- l 0.67 in / 17 mm
- m 1.38 in / 35 mm
- n 1.97 in / 50 mm
- o 3.07 in / 78 mm

Connection designations for Types MOC and MOCH in parentheses

- 1 (P) = Supply (or Vacuum)
- 2 (A) = Outlet
- 3 (R) = Exhaust

Order Number	Part No./Type	2199 MCH-3-1/8	2211 MOCH-3-1/8
Medium		Compressed air (filtered, lubricated or unlubricated) can be used for vacuum *	
Mounting		Holes through housing	
Connection		G 1/8 ISO	
Orifice Size		0.09 in / 2.5 mm	
C _v Factor (P → A)		0.16 C _v / 160 l/min	
Pressure Range		0-105 psi / 0-7 bar	
Response Time at 90 psi / 6 bar		On: 12 ms Off: 13 ms	
Ambient Temperature		23 to 104°F / -5 to +40°C	
Medium Temperature		14 to 140°F / -10 to +60°C	
Design		Seat valve, directly actuated, with spring return	
Materials		Housings: Al, blue anodized. Seals: Buna N	
Weight		0.750 lb / 0.340 kg	
Direct Current:	Standard Voltage	12, 24V	For solenoids, see pages 732-733.
	Available Voltage	12 to 220V	
Alternating Current:	Standard Voltage	24, 42, 110, 220V/50 Hz	
	Available Voltage	24-380V/50 or 60 Hz	
Power Consumption		DC: 12 W. AC: inrush 30 VA, holding 22 VA	
ED Switching Time		100%	
Type of Protection		IP 65 (DIN 40050)	

* Type MCH-3-1/8 (model SA 3998) can be used for vacuum operation (vacuum connection at P)