

Pressure Gauge MA, DIN EN 837-1, with Red-Green Range

Technical Data – Inch Series

Function



Temperature Range

-4 ... +140 °F / -20 ... +60 °C



The adjustable red-green range provides additional safety when monitoring compressed air.

With the two red segments above the pressure gauge scale along with the printed green segment it is possible to individually limit the desired pressure range.

This colored demarcation enables you to recognize immediately whether or not the pressure is in the permitted tolerance range.

Technical Data			
Nominal Size	40	50	63
Pneumatic connection	1/8 NPT	1/4 NPT	1/4 NPT
Operating medium	Liquid media		
	Gaseous media		
	Not permitted: Oxygen		
	Not permitted: Acetylene		
Design	Bourdon tube pressure gauge		
Type of mounting	Can be screwed in		
Connection position	Center, rear side		
Ambient temperature	-4 ... +140 °F / -20 ... +60 °C		
Accuracy of measurement, class	2.5		
Factor, continuous load	0.75		
Factor, intermittent load	0.66		
Protection class	IP43		
Materials	Housing: Acrylic butadiene styrene		
	Window shield: Polystyrene		
Weight	0.124 lb / 62 g	0.152 lb / 76 g	0.176 lb / 88 g

Indicating Range			
Nominal Size	40	50	63
[psi]			
0 ... 36	-	■	■
0 ... 145	■	■	■
0 ... 232	■	■	■

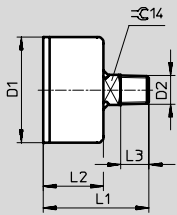
Pressure Gauge MA, DIN EN 837-1, with Red-Green Range

Technical Data – Inch Series

FESTO

Dimensions

MA-...-E-RG



Type	D1 ∅ ±0.5	D2	L1 ±1	L2 ±0.5	L3
MA-40-...-E-RG	39	1/8 NPT	46	28	10
MA-50-...-E-RG	49	1/4 NPT	49	28	13
MA-63-...-E-RG	61.5	1/4 NPT	50.5	29.5	13

Dimensions shown in mm [mm → inch = ÷ 25.4]

Ordering Data

Nominal size	Pneumatic connection	Indicating range	Part No.	Type
Display unit [psi]				
40	1/8 NPT	0 ... 145	530387	MA-40-145-N1/8-PSI-E-RG
		0 ... 232	530388	MA-40-232-N1/8-PSI-E-RG
50	1/4 NPT	0 ... 36	530389	MA-50-36-N1/4-PSI-E-RG
		0 ... 145	530390	MA-50-145-N1/4-PSI-E-RG
		0 ... 232	530391	MA-50-232-N1/4-PSI-E-RG
63	1/4 NPT	0 ... 36	530392	MA-63-36-N1/4-PSI-E-RG
		0 ... 145	530393	MA-63-145-N1/4-PSI-E-RG
		0 ... 232	530394	MA-63-232-N1/4-PSI-E-RG