

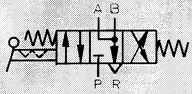
# Manually Actuated Toggle Valve

4/3 - 4 Ported, 4 Way, 3 Position Valves, Directly Actuated, M5

## Toggle Valve

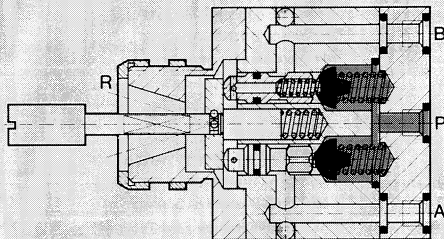
Spring Centered with Manual Detent

Type H-4/3-M5

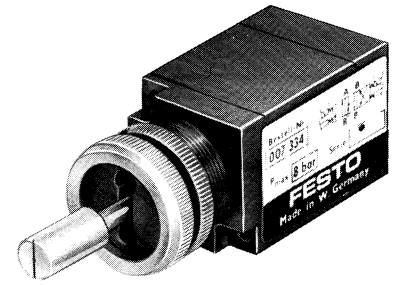


The 4 ported, 4 way, 3 position toggle valve is manually operated open center valve with no crossover switching. In center position, ports A and B are both exhausted.

Once the hand lever is actuated in either direction, it automatically returns to the center position. It may, however, be locked in either offset position by rotating the lever 90°.



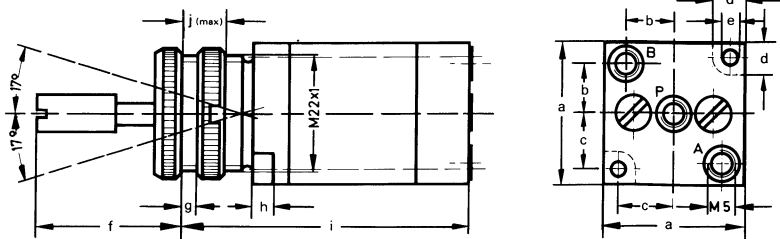
- 1 (P) = Supply
- 4, 2 (A, B) = Outlet
- 3 (R) = Exhaust



Mounting:

- In front panel, mounting hole, 7/8 in / 22.53 mm diameter
- By flange mounting on an independent sub-base

Two galvanized socket head capscrews, M3 x 45, are included.



Dimensions

a	1.06 in / 27 mm	e	0.13 in / 3.2 mm	h	0.16 in / 4 mm
b	0.36 in / 9.2 mm	f	1.08 in / 27.5 mm	i	2.17 in / 55 mm
c	0.42 in / 10.6 mm	g	0.12 in / 3 mm	j	0.31 in / 8 mm
d	0.24 in / 6 mm				

Order Number	7334 H-4/3-M5
Medium	Compressed air (filtered, lubricated or unlubricated)
Mounting	In front or mounted on sub-base
Connection	M5, or mounted on sub-base (O-ring seals)
Orifice Size	0.16 in / 4 mm
C <sub>v</sub> Factor	0.13 C <sub>v</sub> / 125 l/min
Pressure Range	0-120 psi / 0-8 bar
Operating Force at 90 psi / 6 bar Supply *	1.8 lbf / 8 N
Design	Seat valve, directly actuated in either direction, spring return
Material	Housing: Al, blue anodized. Seals: Buna N.
Weight	0.220 lb / 0.100 kg

\*14 to 140°F / -10 to 60°C