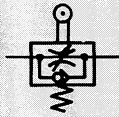


# Mechanically Actuated In-line Flow Controls

Cam Operated Flow Controls, G 1/4 ISO and G 3/8 ISO

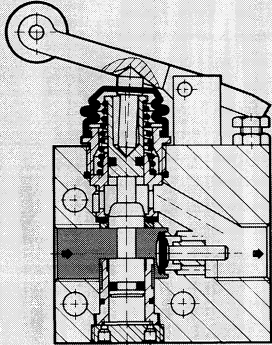
## Cam Operated Flow Control Valve

Type GG-1/4-3/8  
GGO-1/4-3/8

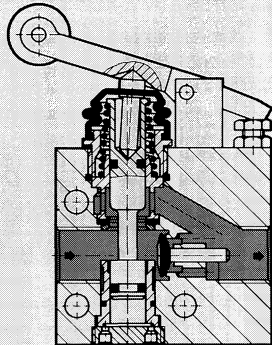


With Roller Lever and Adjustable Initial Flow Setting.

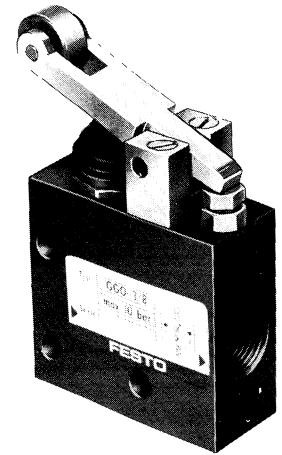
In Type GG, the needle valve is gradually opened by depressing the roller lever.



In Type GGO, the needle valve is gradually closed by depressing the roller lever.



Full free flow through the check valve is independent of initial roller lever position.



These valves are used to adjust flow when operated by the movement of a single-acting or double-acting cylinder.

The flow is adjusted with an adjustment screw and is then decreased or increased (depending on the valve) by depressing the roller lever. Flow is infinitely variable within the actuation range and can be varied by the design of the control cam.

The arrows on the nameplate indicate the direction of controlled flow.

Reducing bushings D-1/4 i-3/8 a attached for reducing the port to 1/4 in ISO. Air flow is cut by approximately 10%.

Dimensions: see page 813.

Order Number	3633 GG-1/4-3/8	3634 GGO-1/4-3/8
Medium	Compressed air (filtered, lubricated or unlubricated)	
Mounting	Holes through housing	
Connection	G 3/8 ISO	
Orifice Size	Controlled Flow	0.32 in / 8 mm
	Free Flow	0.34 in / 8.5 mm
C <sub>v</sub> Factor	Controlled Flow	0.87 C <sub>v</sub> / 870 l/min
	Free Flow	1.15 C <sub>v</sub> / 1150 l/min
Pressure Range*	0-120 psi / 0.03-8 bar	
Operating Force at 90 psi / 6 bar	7 lbf / 32 N	
Design	Needle valve with check valve and roller lever	
Materials	Housing: Al, blue anodized. Seals: Buna N.	
Weight	0.838 lb / 0.380 kg	0.882 lb / 0.400 kg

\* 14 to 140°F / -10 to +60°C