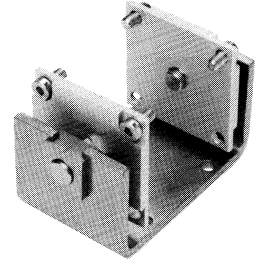


# Magnetically-Coupled Rodless Cylinders, Type DGO

## Yoke Mounting Bracket, Type FKG-...-B



### Yoke Mounting Bracket Type FKG-...-B

The yoke mounting bracket prevents moment arm torque on the yoke by transferring the torque force to the centerline of the yoke. This greatly reduces the force lost to bearing friction and compensates for non-parallel alignment.

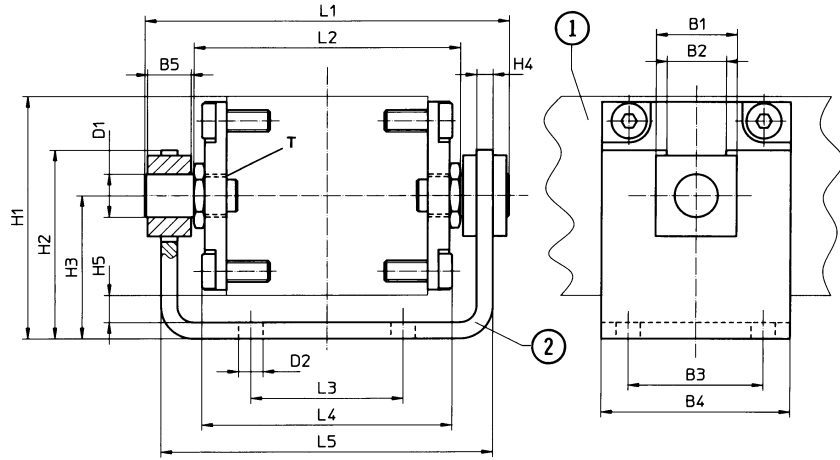
### Order Numbers

#### Inch Series:

13000110	FKG-5/8-B
546541	FKG-3/4-B
546542	FKG-1-B
546543	FKG-1-1/4-B
546544	FKG-1-5/8-B

#### Metric Series:

15233	FKG-16-B
33339	FKG-20-B
15234	FKG-25-B
33340	FKG-32-B
15235	FKG-40-B



Maximum permissible alignment error on longitudinal axis of cylinder ( $\pm 0.039$  in / 1 mm).

- ① Rodless cylinder yoke
- ② Can be repositioned by 180° from mounting surface

Type FKG-...- in		B1 in / mm	B2 in / mm	B3 in / mm	B4 in / mm	B5 in / mm	D1 dia. in / mm	D2 in / mm	H1 in / mm	H2 in / mm
5/8	16	0.71 / 18	0.55 / 14	1.02 / 26	1.57 / 40	0.31 / 8	0.39 / 10	0.22 / 5.5	1.85 / 47	1.57 / 40
3/4	20	0.71 / 18	0.55 / 14	1.26 / 32	1.65 / 42	0.32 / 8	0.39 / 10	0.22 / 5.5	2.09 / 53	1.69 / 43
1	25	0.87 / 22	0.63 / 16	1.42 / 36	1.97 / 50	0.47 / 12	0.47 / 12	0.26 / 6.6	2.48 / 63	1.97 / 50
1-1/4	32	0.87 / 22	0.63 / 16	1.89 / 48	2.36 / 60	0.47 / 12	0.47 / 12	0.26 / 6.6	2.87 / 73	2.17 / 55
1-5/8	40	1.18 / 30	0.87 / 22	1.97 / 50	2.76 / 70	0.63 / 16	0.63 / 16	0.35 / 9	3.54 / 90	2.76 / 70
Type FKG-...- in		H3 in / mm	H4 in / mm	H5 in / mm	L1 in / mm	L2 in / mm	L3 in / mm	L4 in / mm	L5 in / mm	T
5/8	16	1.14 / 29	0.16 / 4	0.28 / 7	2.91 / 74	2.13 / 54	1.02 / 26	1.93 / 49	2.68 / 68	M10 x 1
3/4	20	1.26 / 32	0.16 / 4	0.28 / 7	3.23 / 82	2.44 / 62	1.26 / 32	2.24 / 57	2.99 / 76	M10 x 1
1	25	1.50 / 38	0.20 / 5	0.31 / 8	3.86 / 98	2.76 / 70	1.42 / 36	2.52 / 64	3.50 / 89	M12 x 1
1-1/4	32	1.69 / 43	0.30 / 5	0.32 / 8	4.25 / 108	3.15 / 80	1.89 / 48	2.91 / 74	3.90 / 99	M12 x 1
1-5/8	40	2.09 / 53	0.24 / 6	0.39 / 10	5.28 / 134	3.86 / 98	2.20 / 56	3.62 / 92	4.80 / 122	M16 x 1