

Rod Aligner Inch Series

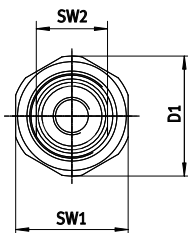
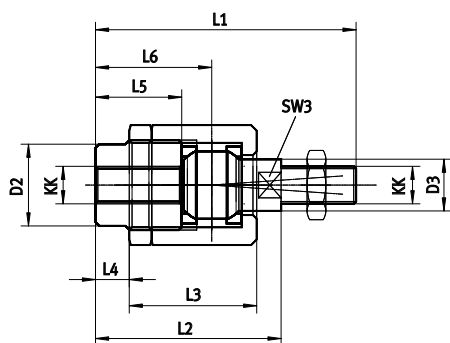
Type FK-...

A rod aligner connects the piston rod end of cylinders to compensate for radial and angular misalignments.

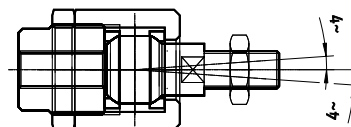
Material: Galvanized Steel



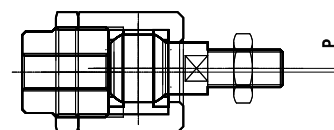
Order Number	For Piston Rod Thread	Weight lb / kg	Max. Allowable Tensile and compressive load lbf / N
532702	6-32 UNC-2B	0.04 / 0.02	169 / 750
532703	10-32 UNF-2B	0.04 / 0.02	169 / 750
532704	5/16-24 UNF-2B	0.11 / 0.05	562 / 2,500
532705	3/8-24 UNF-2B	0.48 / 0.22	1,124 / 5,000
532706	1/2-20 UNF-2B	0.50 / 0.23	1,124 / 5,000
532707	5/8-18 UNF-2B	1.48 / 0.67	2,248 / 10,000
532708	3/4-16 UNF-2B	1.64 / 0.74	2,248 / 10,000
532709	1-12 UNF-2B	4.44 / 2.01	6,744 / 30,000
532710	1 1/2-12 UNF-2B	12.96 / 5.88	8,922 / 40,000



Angular Compensation



Radial Compensation of Centerline



Type	∅ D1 in / mm	∅ D2 in / mm	∅ D3 in / mm	KK in / mm	L1 in / mm	L2 in / mm	L3 in / mm	L4 in / mm	L5 in / mm	L6 in / mm	SW1 mm	SW2 mm	SW3 mm	P in / mm
FK-6-32	—	—	0.15 / 3.8	6-32 UNC-2B	1.30 / 33	0.94 / 24	0.65 / 16.5	0.18 / 4.5	0.49 / 12.5	0.63 / 16	11	11	3.2	0.02 / 0.5
FK-10-32	—	—	0.15 / 3.8	10-32 UNF-2B	1.30 / 33	0.94 / 24	0.65 / 16.5	0.18 / 4.5	0.49 / 12.5	0.63 / 16	11	11	3.2	0.02 / 0.5
FK-5/16-24	0.75 / 19	0.49 / 12.5	0.31 / 7.8	5/16-24 UNF-2B	1.93 / 49	1.34 / 34	0.93 / 23.5	0.24 / 6	0.55 / 14	0.80 / 20.5	17	10	7	0.02 / 0.5
FK-3/8-24	1.26 / 32	0.86 / 21.8	0.54 / 13.8	3/8-24 UNF-2B	2.74 / 69.5	1.95 / 49.5	1.34 / 34	0.35 / 9	0.91 / 23	1.22 / 31	30	19	12	0.03 / 0.7
FK-1/2-20	1.26 / 32	0.86 / 21.8	0.54 / 13.8	1/2-20 UNF-2B	2.93 / 74.5	1.99 / 50.5	1.34 / 34	0.39 / 10	0.95 / 24	1.26 / 32	30	19	12	0.03 / 0.7
FK-5/8-18	1.77 / 45	1.33 / 33.8	0.87 / 22	5/8-18 UNF-2B	4.06 / 103	2.80 / 71	2.09 / 53	0.39 / 10	1.26 / 32	1.75 / 44.5	41	30	19	0.039 / 1.0
FK-3/4-16	1.77 / 45	1.33 / 33.8	0.87 / 22	3/4-16 UNF-2B	4.72 / 120	3.15 / 80	2.09 / 53	0.75 / 19.1	1.61 / 41	2.11 / 53.5	41	30	19	0.039 / 1.0
FK-1-12	2.44 / 62	2.43 / 61.7	1.10 / 27.9	1-12 UNF-2B	6.18 / 156.9	4.05 / 102.9	3.11 / 79	0.48 / 12.2	1.65 / 42	2.46 / 62.6	55	55	24	0.039 / 1.0
FK-1 1/2-12	3.15 / 80	3.15 / 80	1.50 / 38	1 1/2-12 UNF-2B	9.88 / 251	7.05 / 179	5.35 / 136	0.87 / 22	3.07 / 78	4.33 / 110	75	75	32	0.039 / 1.0