

Push-Button Valve

Spring Return

Type K-3-M5



Finger Lever Valve

Type TH-3-M5

Hand/Foot Pedal Valve

Type F-3-M5

Accessories:

(Order separately)

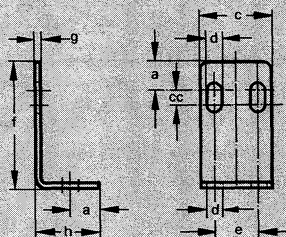
Bracket

Order Number 9634 HV-M5

Complete with

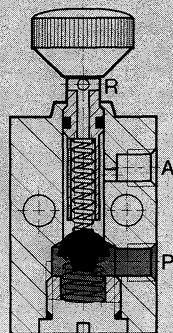
1 bracket, 2 capscrews M 4 x 20

2 hex nuts and spring washers



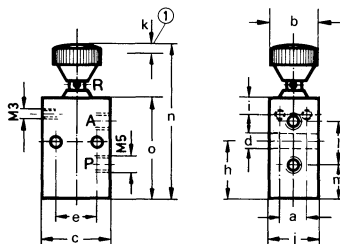
Exhaust through the stem.

Example: Type K-3-M5

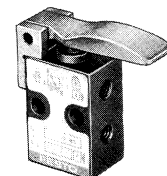
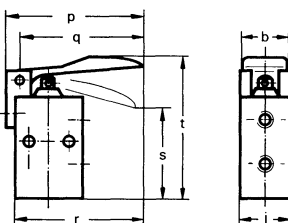


- 1 (P) = Supply (or vacuum)
- 2 (A) = Outlet
- 3 (R) = Exhaust

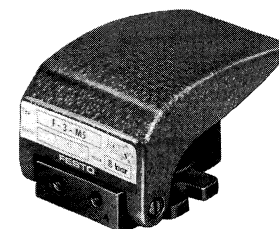
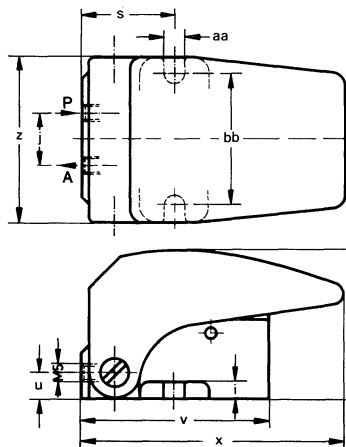
Type K-3-M5



Type TH-3-M5



Type F-3-M5



① Switching Direction

Dimensions

| | | | | | |
|---|------------------|---|-----------------|----|-------------------|
| a | 0.32 in / 8 mm | h | 0.67 in / 17 mm | v | 2.13 in / 54 mm |
| b | 0.55 in / 14 mm | i | 0.20 in / 5 mm | x | 3.01 in / 76.5 mm |
| c | 0.79 in / 20 mm | j | 0.59 in / 15 mm | y | 1.69 in / 43 mm |
| d | 0.17 in / 4.4 mm | k | 0.12 in / 3 mm | z | 1.89 in / 48 mm |
| e | 0.47 in / 12 mm | l | 0.51 in / 13 mm | aa | 0.26 in / 6.5 mm |
| f | 1.28 in / 35 mm | m | 0.39 in / 10 mm | bb | 1.50 in / 38 mm |
| | | | | cc | 0.16 in / 4 mm |

| Order Number | 3660 K-3-M5 | 6758 TH-3-M5 | 4452 F-3-M5 |
|---|--|-----------------------|---------------------|
| Medium | Compressed air (filtered, lubricated or unlubricated) can be used for vacuum | | |
| Mounting | 2 holes through housing | | Base mounting |
| Connection | M5 | | |
| Orifice Size | 0.08 in / 2 mm | | |
| C _v Factor | 0.08 C _v / 80 l/min | | |
| Pressure Range | 0 to 120 psi / 0 to 8 bar | | |
| Operating Force at 90 psi / 6 bar Supply* | 5.2 lbf / 23 N | 1.8 lbf / 8 N | 1.5 lbf / 7 N |
| Design | Seat valve, directly actuated in one direction, spring return | | |
| Material | Housing: Al, blue anodized. Seals: Buna N. | Housing: Diecast zinc | |
| Weight | 0.062 lb / 0.028 kg | 0.082 lb / 0.037 kg | 0.364 lb / 0.165 kg |

*14 to 140°F / -10 to +60°C