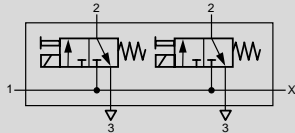


Single Solenoid Valve

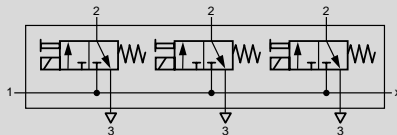
Spring Return and Manual Override
Two 3-way, 2 position solenoid valves on common manifold:

Type BMCH-2-3-1/8



Three 3-way, 2 position solenoid valves on common manifold:

Type BMCH-3-3-1/8



When the solenoid is energized, the valve shifts and remains shifted until the solenoid is deenergized.

Accessories:

Solenoids, see pages 732-733.

Sockets, Types MSSD-C, KMC-..., see pages 734-735.

LED inserts, Types MC-..., MCL-..., see pages 738-739.

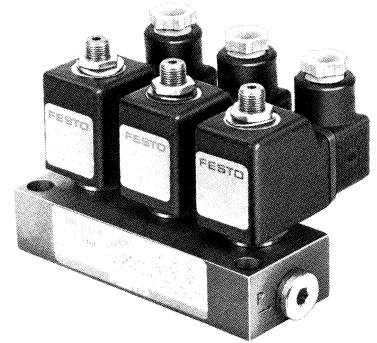
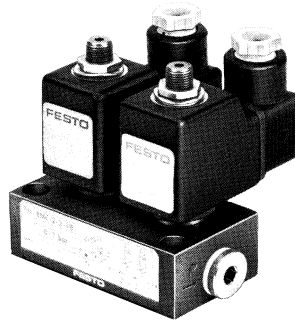
Connecting Plugs:

Order No. 2018 BX-1/8

1 (P) = Supply (or Vacuum)

2 (A) = Outlet

3 (R) = Exhaust



| Order Number | Part No./Type | 6686 BMCH-2-3-1/8 | 6687 BMCH-3-3-1/8 |
|---------------------------------|-------------------|---|-----------------------------------|
| Medium | | Compressed air (filtered, lubricated or unlubricated) or vacuum * | |
| Mounting | | Holes through housing | |
| Connection | | P: G 1/4 ISO, A, R: G 1/8 ISO | |
| Orifice Size | | 0.09 in / 2.5 mm | |
| C _v Factor (P → A) | | 0.16 C _v / 160 l/min | |
| Pressure Range | | 0-105 psi / 0-7 bar | |
| Response Time at 90 psi / 6 bar | | On: 12 ms Off: 13 ms | |
| Ambient Temperature | | 23 to 104°F / -5 to +°40C | |
| Medium Temperature | | 14 to 140°F / -10 to +60°C | |
| Design | | Seat valve directly actuated with spring return | |
| Materials | | Housings: Al, blue anodized. Seals: Buna N | |
| Weight | | 1.499 lb / 0.680 kg | 2.227 lb / 1.010 kg |
| Direct Current: | Standard Voltage | 12, 24V | For solenoids, see pages 732-733. |
| | Available Voltage | 12 to 220V | |
| Alternating Current: | Standard Voltage | 24, 42, 110, 220V/50 Hz | |
| | Available Voltage | 24-380V/50 or 60 Hz | |
| Power Consumption | | DC: 12 W. AC: inrush 30 VA, holding 22 VA | |
| ED Switching Time | | 100% | |
| Type of Protection | | IP 65 (DIN 40050) | |

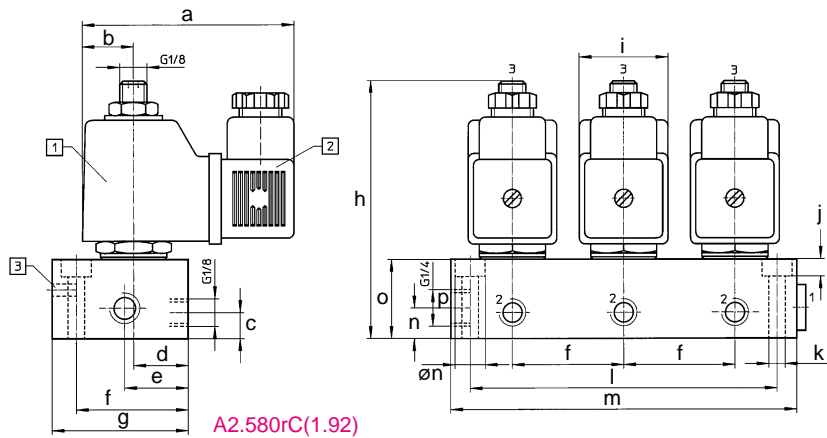
* Vacuum connection at P

Solenoid Actuated Valves

Dimensions

Type BMCH-2-3-1/8

BMCH-3-3-1/8



Dimensions

| | | | |
|--------------------|---------------------|--------------------|--|
| a 2.76 in / 70 mm | g 1.77 in / 45 mm | l 4.02 in / 102 mm | <p>1 Solenoid coil can be rotated</p> <p>2 Plug can be turned 90°</p> <p>3 Manual override</p> |
| b 0.67 in / 17 mm | h 3.35 in / 85 mm | m 4.53 in / 115 mm | |
| c 0.33 in / 8.5 mm | i 1.16 in / 29.5 mm | n 0.39 in / 10 mm | |
| d 0.71 in / 18 mm | j 0.22 in / 5.7 mm | o 1.02 in / 26 mm | |
| e 0.83 in / 21 mm | k 0.22 in / 5.5 mm | p 0.04 in / 1 mm | |
| f 1.46 in / 37 mm | | | |