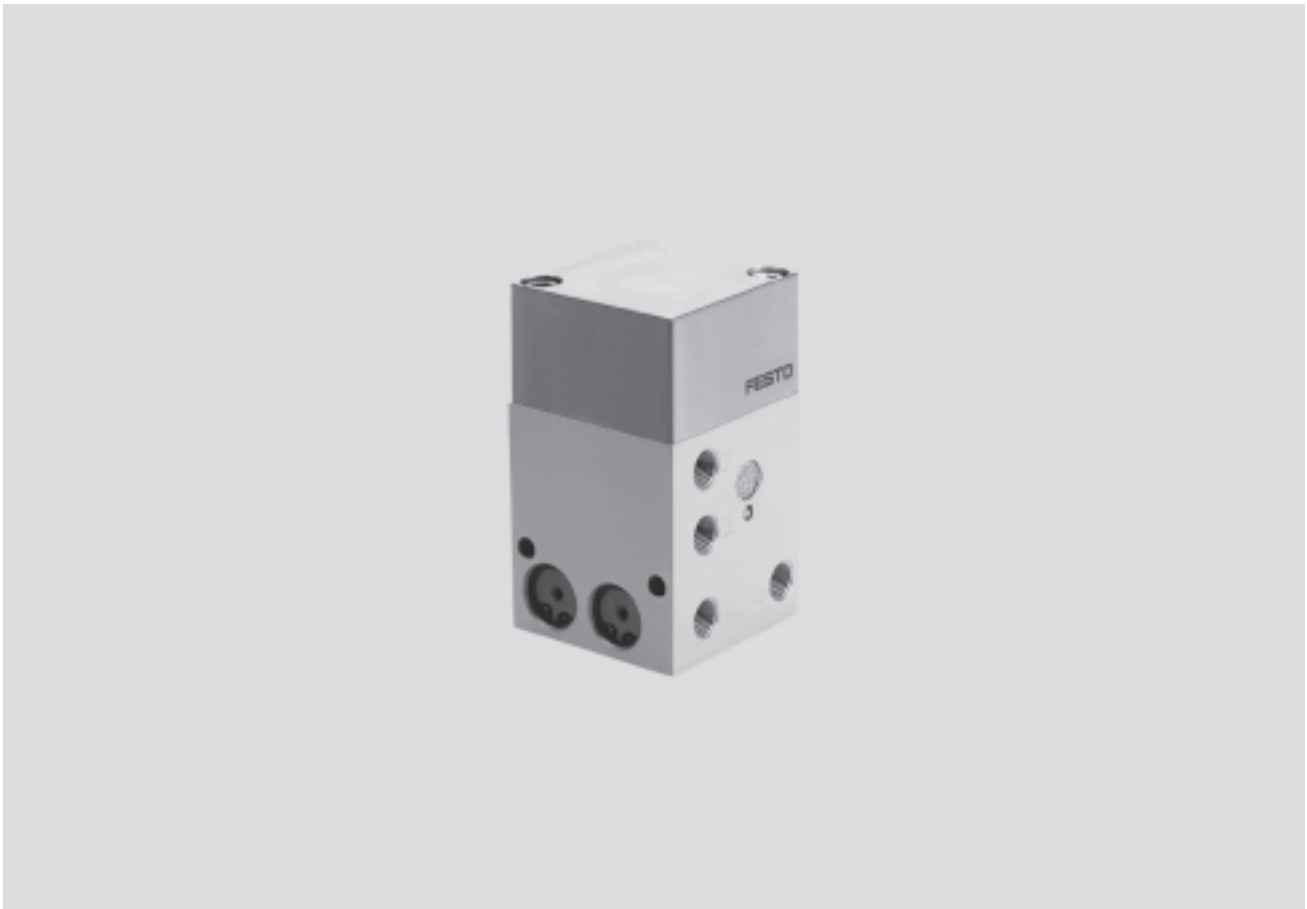


Control block for two-hand start ZSB

Key features



Safety component

This pneumatic start block is used where a manually-started operation, such as the triggering of compressed air cylinders, would otherwise involve danger for a machine operator, or with other devices where regulations require that machine operators have both hands clear of a danger zone when starting a machine.

A continuous signal will be present at the output A only if pressure is applied via 3/2-way pushbutton valves to the two valve inputs p1 and p2 simultaneously, within 0.2 to 0.5 seconds.

If one or both of the pushbutton valves are released, flow to the output is immediately interrupted and any cylinders or valves connected to output A are reversed. This start block is a safety component as defined by EU Machinery Directive

89/392/EU, Appendix 4, and is CE-certified. It falls within Category 1 as defined by EN 954 (only in conjunction with a pressure sequence valve such as VD-3-PK-3) and conforms to Type III A as defined by EN 574.

