



- Bellows and internal gear couplings
- Force-locked and backlash-free torque transmission
- Connecting shafts
- Synchronisation of toothed belt axes

Accessories for electrical positioning systems

Key features

At a glance

Bellows couplings

5 / 2.3-3

- The one-piece bellows coupling is suitable for force-locked and backlash-free transmission of low and medium torque between electric motors and axes
- Diameter: 15 and 19 mm
- System product for positioning applications



Internal gear couplings

5 / 2.3-3

- The three-part internal gear coupling is suitable for force-locked and backlash-free transmission of high torques between electric motors and axes
- Diameter: 30, 40, 42, 65 mm
- System product for positioning applications



Connecting shafts

5 / 2.3-8

- For synchronisation of toothed belt axes
- For torsion-resistant transmission of torques
- For slip-free transmission of an identical feed speed to a second axis
- Sizes: 25, 40, 63 mm



Couplings KSE

Type code

		KSE	–	19	–	24	–	D06	–	D09
Type										
KSE	Bellows coupling									
	Internal gear coupling									
Diameter (∅) [mm]										
15	∅ 15 mm									
19	∅ 19 mm									
30	∅ 30 mm									
40	∅ 40 mm									
42	∅ 42 mm									
65	∅ 65 mm									
Overall length										
22	22 mm									
24	24 mm									
32	32 mm									
35	35 mm									
50	50 mm									
66	66 mm									
90	90 mm									
Hole D1										
Hole D2										

Couplings KSE

Selection aid

FESTO

Electro-mechanical drives	Couplings			
	Type	Hole for drive shaft		Transferable torque ²⁾
Size	Type	D1 ∅ H7 [mm]	D2 ∅ H7 [mm]	[Nm]
Toothed belt axes DGE-...-ZR...				
8	KSE-15-22-D04-D05	4 ¹⁾	5	1
	KSE-15-22-D04-D06	4 ¹⁾	6	1
	KSE-15-22-D04-D07	4 ¹⁾	7	1
12	KSE-15-22-D04-D05	4 ¹⁾	5	1
	KSE-15-22-D04-D06	4 ¹⁾	6	1
	KSE-15-22-D04-D07	4 ¹⁾	7	1
	KSE-15-22-D04-D09	4 ¹⁾	9	1
18	KSE-19-24-D06-D06,35	6 ¹⁾	6.35	1.5
	KSE-19-24-D06-D09	6 ¹⁾	9	1.5
25	KSE-30-35-D06,35-D08	8	6.35	6.3
	KSE-30-35-D08-D11	8	11	6.8
	KSE-30-35-D08-D12	8	12	6.8
40	KSE-40-66-D15-D19	15	19	21.2
	KSE-40-66-D15-D20	15	20	21.2
	KSE-40-66-D15-D24	15	24	16.2
	KSE-40-66-DXX-D15	15	3)	–
63	KSE-65-90-D24-D25	24	25	64
	KSE-65-90-DXX-D25	25	3)	–
Spindle axes DGE-...-SP...				
18	KSE-15-22-D05-D05	5 ¹⁾	5	1
	KSE-15-22-D05-D06	5 ¹⁾	6	1
	KSE-15-22-D05-D07	5 ¹⁾	7	1
	KSE-15-22-D05-D09	5 ¹⁾	9	1
25	KSE-30-35-D06-D06,35	6	6.35	6.3
	KSE-30-35-D06-D09	6	9	6.3
40	KSE-30-35-D11-D12	12	11	7.5
	KSE-40-66-D11-D12	12	11	19.5
	KSE-40-66-D12-D19	12	19	19.8
63	KSE-40-66-D19-D20	20	19	23.1
	KSE-40-66-D20-D20	20	20	23.6
	KSE-40-66-DXX-D20	20	3)	–
Cantilever axes DGEA-...-ZR				
18	KSE-30-35-D08-D11	8	11	6.8
25	KSE-40-66-D11-D11	11	11	19.5
	KSE-40-66-D11-D12	11	12	19.5
40	KSE-40-66-D15-D20	15	20	21,2
	KSE-65-90-D15-D24	15	24	57
Positioning axes DMES-...				
25	KSE-30-32-D06-D08	6	8	7.5
40	KSE-42-50-D12-D12	12	12	17

1) Tolerance field g6

2) For drive shafts with tolerance field h6

3) Must be drilled by the user

Couplings KSE

Technical data



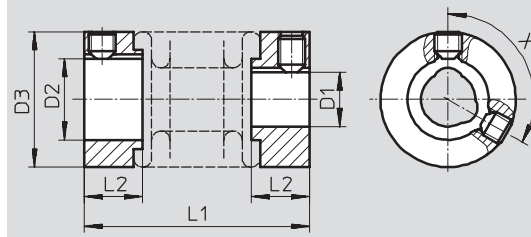
Bellows coupling KSE

∅ - Diameter
15 and 19 mm



General technical data			
Type		KSE-15	KSE-19
Mass moment of inertia	[kg mm ²]	0.13	0.47
Tightening torque for locking screw	[Nm]	1.5	1.5
Weight	[g]	6	12
Materials	Hubs	Aluminium	
	Bellows	Stainless steel	

Dimensions and ordering data Download CAD data → www.festo.com/en/engineering



∅ [mm]	D1 ∅ H7	D2 ∅ H7	D3 ∅	L1	L2	X	Part No.	Type
15	4	5	15	22	6.5	-	530 084	KSE-15-22-D04-D05
	4	6	15	22	6.5	-	540 750	KSE-15-22-D04-D06
	4	7	15	22	6.5	-	184 260	KSE-15-22-D04-D07
	4	9	15	22	6.5	-	184 262	KSE-15-22-D04-D09
	5	5	15	22	6.5	-	530 085	KSE-15-22-D05-D05
	5	6	15	22	6.5	-	540 751	KSE-15-22-D05-D06
	5	7	15	22	6.5	-	184 261	KSE-15-22-D05-D07
	5	9	15	22	6.5	-	529 953	KSE-15-22-D05-D09
19	6	6.35	19	24	7.5	120	530 086	KSE-19-24-D06-D06,35
	6	9	19	24	7.5	120	184 263	KSE-19-24-D06-D09

Couplings KSE

Technical data



Internal gear coupling KSE

⌀ - Diameter
30, 40, 42 and 65 mm



General technical data						
Type		KSE-30-32	KSE-30-35	KSE-40-66	KSE-42-50	KSE-65-90
Mass moment of inertia	[kg mm ²]	5.8	6.1	42.3	9	417
Tightening torque for locking screw	[Nm]	4	2.9	10.5	8	25
Weight	[g]	50	45	139	146	535
Materials	Hubs	Aluminium				
	Internal gear	Polyurethane				

Dimensions and ordering data Download CAD data → www.festo.com/en/engineering

KSE-30-32
KSE-30-35

1 Compress coupling to specified length only

2 Min. installation Ø (non-flush clamping screws)

∅ [mm]	D1 ∅ H7	D2 ∅ H7	Part No.	Type
30	6	8	533 708	KSE-30-32-D06-D08
	6	6.35	530 087	KSE-30-35-D06-D06,35
	6.35	8	530 088	KSE-30-35-D06,35-D08
	6	9	530 941	KSE-30-35-D06-D09
	8	8	123 044	KSE-30-35-D08-D08
	8	10	123 050	KSE-30-35-D08-D10
	8	11	123 042	KSE-30-35-D08-D11
	8	12	123 043	KSE-30-35-D08-D12
	11	12	123 051	KSE-30-35-D11-D12

Couplings KSE

Technical data

FESTO

Dimensions and ordering data Download CAD data → www.festo.com/en/engineering

KSE-40

KSE-42

1 Compress coupling to specified length only
 2 Min. installation \varnothing (non-flush clamping screws)

\varnothing [mm]	D1 \varnothing H7	D2 \varnothing H7	Part No.	Type
40	11	11	530 090	KSE-40-66-D11-D11
	11	12	525 864	KSE-40-66-D11-D12
	12	19	529 952	KSE-40-66-D12-D19
	15	16	123 846	KSE-40-66-D15-D16
	15	19	123 844	KSE-40-66-D15-D19
	15	20	123 845	KSE-40-66-D15-D20
	15	24	176 033	KSE-40-66-D15-D24
	16	20	123 848	KSE-40-66-D16-D20
	19	20	123 847	KSE-40-66-D19-D20
	20	20	123 849	KSE-40-66-D20-D20
40	XX ¹⁾	15	176 036	KSE-40-66-DXX-D15
	XX ¹⁾	20	176 037	KSE-40-66-DXX-D20
42	12	12	533 709	KSE-42-50-D12-D12

1) Hubs predrilled to \varnothing 5 mm

KSE-65

1 Compress coupling to specified length only
 2 Min. installation \varnothing (non-flush clamping screws)

\varnothing [mm]	D1 \varnothing H7	D2 \varnothing H7	Part No.	Type
65	15	24	530 940	KSE-65-90-D15-D24
	24	25	123 852	KSE-65-90-D24-D25
	25	28	123 854	KSE-65-90-D25-D28
	XX ¹⁾	25	176 038	KSE-65-90-DXX-D25

1) Hubs predrilled to \varnothing 5 mm