

Threaded fittings

Technical data

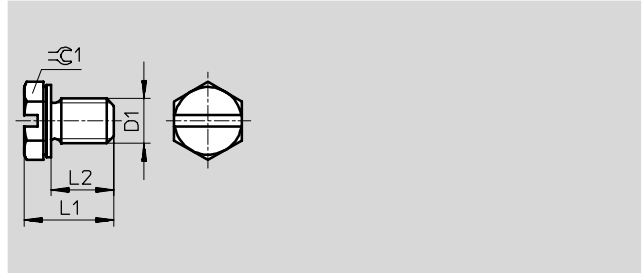
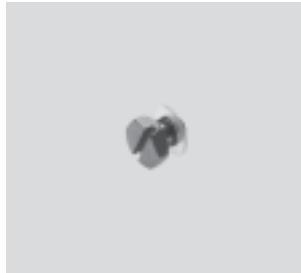


Blanking plug B-M3-S9

with sealing ring

Material:
High-alloy stainless steel

Free of copper, PTFE and silicone

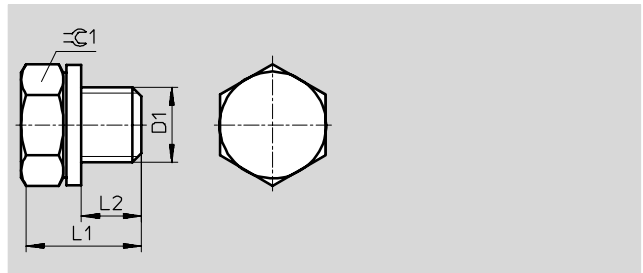


Blanking plug B-M5

with sealing ring

Material:
Aluminium

Free of copper, PTFE and silicone

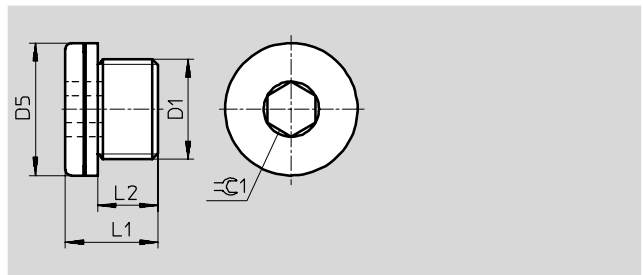


Blanking plug B

with sealing ring

Material:
Steel

Free of copper, PTFE and silicone



| Dimensions and ordering data | | | | | | | | |
|------------------------------|---------------|-----|-----|--------------|------------|----------|-----------------------|-----|
| Connection | D5 | L1 | L2 | $\approx C1$ | Weight [g] | Part No. | Type | PU* |
| D1 | \varnothing | | | | | | | |
| M thread | | | | | | | | |
| M3 | - | 4.5 | 2.7 | 4.5 | 1 | 30 979 | B-M3-S9 ¹⁾ | 10 |
| M5 | - | 8 | 4 | 7 | 1 | 3 843 | B-M5 | 10 |
| | 8 | 6.5 | 3.5 | 2.5 | 2 | 534 212 | B-M5-100 | 100 |
| M7 | 9.5 | 8 | 5.5 | 3 | 2 | 174 308 | B-M5-B | 10 |
| | | | | | | 174 309 | B-M7 | 10 |
| G thread | | | | | | | | |
| G $\frac{1}{8}$ | 14 | 11 | 6.5 | 5 | 5 | 3 568 | B- $\frac{1}{8}$ | 10 |
| | | | | | | 534 213 | B- $\frac{1}{8}$ -100 | 100 |
| G $\frac{1}{4}$ | 18 | 15 | 10 | 6 | 15 | 3 569 | B- $\frac{1}{4}$ | 10 |
| | | | | | | 534 214 | B- $\frac{1}{4}$ -50 | 50 |
| G $\frac{3}{8}$ | 22 | 15 | 10 | 8 | 22 | 3 570 | B- $\frac{3}{8}$ | 10 |
| | | | | | | 534 215 | B- $\frac{3}{8}$ -20 | 20 |
| G $\frac{1}{2}$ | 26 | 18 | 12 | 10 | 43 | 3 571 | B- $\frac{1}{2}$ | 10 |
| | | | | | | 534 216 | B- $\frac{1}{2}$ -20 | 20 |
| G $\frac{3}{4}$ | 32 | 20 | 14 | 12 | 73 | 3 572 | B- $\frac{3}{4}$ | 1 |
| G1 | 39 | 21 | 14 | 17 | 153 | 5 763 | B-1 | 1 |

* Packaging unit quantity
1) Corrosion and acid resistant version

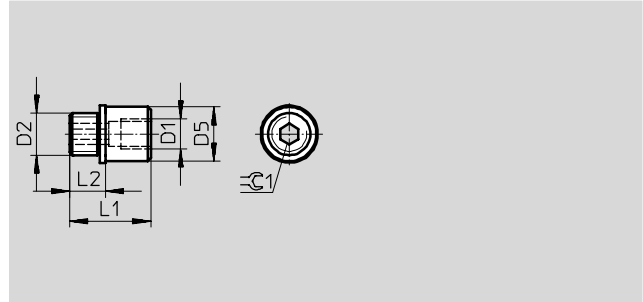
Core Range

Threaded fittings

Technical data

Reducing nipple D with sealing ring

Material:
Brass

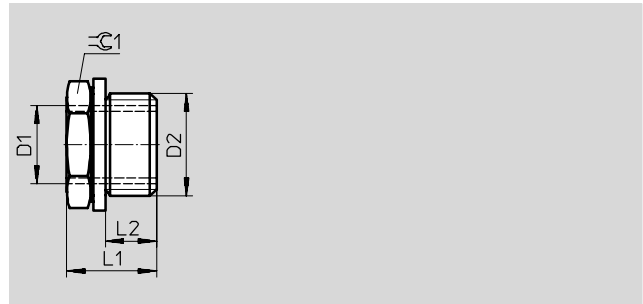



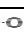


| Dimensions and ordering data | | | | | | | | | |
|------------------------------|----|----|------|----|------|------------|----------|---------------|-----|
| Connection | | D5 | L1 | L2 | ≡C 1 | Weight [g] | Part No. | Type | PU* |
| D1 | D2 | | | | | | | | |
| M5 | M7 | 9 | 13.5 | 6 | 3 | 43 | 161 359 | D-M5I-M7A-ISK | 10 |

* Packaging unit quantity

Reducing nipple D with sealing ring

Material:
Brass
D-M3I-M5A-S9:
High-alloy stainless steel



| Dimensions and ordering data | | | | | | | | |
|-------------------------------|-------------------------------|-------------------------------|------|------|------------|----------|---|---|
| Connection | | L1 | L2 | ≡C 1 | Weight [g] | Part No. | Type | PU* |
| D1 | D2 | | | | | | | |
| M thread | | | | | | | | |
| M3 | M5 | 6 | 3.5 | 7 | 1 | 30 980 | D-M3I-M5A-S9 ¹⁾ | 10 |
| M5 6 mm deep | G ¹ / ₈ | 9.5 | 5 | 13 | 10 | 3 842 | D-M5I- ¹ / ₈ A ²⁾ | 10 |
| | | | | | | 534 208 | D-M5I- ¹ / ₈ A-100 | 100 |
| M5 | G ¹ / ₄ | 10.5 | 4.5 | 17 | 12 | 197 632 | D-M5I- ¹ / ₄ A | 10 |
| M7 | G ¹ / ₈ | 9.5 | 5.0 | 13 | – | 534 144 | D-M7I- ¹ / ₈ A  | 10 |
| G thread | | | | | | | | |
| G ¹ / ₈ | G ¹ / ₄ | 10.5 | 4.5 | 17 | 8 | 3 577 | D- ¹ / ₈ I- ¹ / ₄ A | 10 |
| | | | | | | 534 209 | D- ¹ / ₈ I- ¹ / ₄ A-100 | 100 |
| | | G ³ / ₈ | 14 | 7 | 19 | – | 534 147 | D- ¹ / ₈ I- ³ / ₈ A  |
| G ¹ / ₄ | G ³ / ₈ | 15.5 | 8.5 | 19 | 14 | 3 581 | D- ¹ / ₄ I- ³ / ₈ A | 10 |
| | | | | | | 534 210 | D- ¹ / ₄ I- ³ / ₈ A-50 | 50 |
| | | G ¹ / ₂ | 18.5 | 11.5 | 24 | 36 | 197 633 | D- ¹ / ₄ I- ¹ / ₂ A |
| G ³ / ₈ | G ³ / ₄ | 20.4 | 10 | 32 | – | 534 145 | D- ¹ / ₄ I- ³ / ₄ A  | 10 |
| | | | | | | 3 585 | D- ³ / ₈ I- ¹ / ₂ A | 10 |
| | | G ¹ / ₂ | 18.5 | 11.5 | 24 | 25 | 534 211 | D- ³ / ₈ I- ¹ / ₂ A-20 |
| G ¹ / ₂ | G ³ / ₄ | 20.4 | 10 | 32 | – | 534 146 | D- ³ / ₈ I- ³ / ₄ A  | 10 |
| | | | | | | 3 588 | D- ¹ / ₂ I- ³ / ₄ A | 1 |
| | | G1 | 24 | 14 | 32 | 45 | 197 634 | D- ¹ / ₂ I-1A |
| G ³ / ₄ | G1 | 23 | 13 | 36 | 110 | 9 168 | D- ³ / ₄ I-1A | 1 |

1) Corrosion and acid resistant version

2) Free of copper, PTFE and silicone

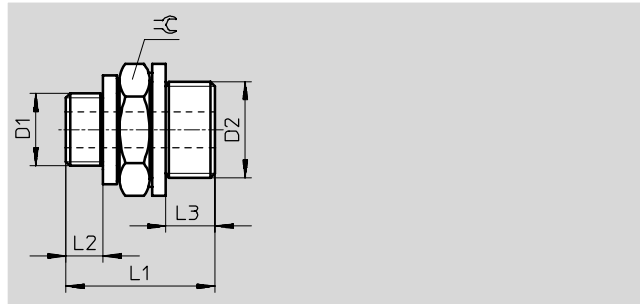
* Packaging unit quantity




 Core Range

Threaded fittings

Technical data

Double nipple E
with 2 sealing rings



| Dimensions and ordering data | | | | | | | | | | |
|------------------------------------|------|--------------|------|------|------|-----|------------|----------------|-------------------------------|--|
| Connection | | Nominal size | L1 | L2 | L3 | ≅G | Weight [g] | Part No. | Type | PU* |
| D1 | D2 | | | | | | | | | |
| M thread – High-alloy steel | | | | | | | | | | |
| M3 | M3 | 1.7 | 8.4 | 2.7 | 2.7 | 4.5 | 1 | 30 987 | E-M3-M3-S9* | 10 |
| M thread – Steel | | | | | | | | | | |
| M5 | M5 | 2.5 | 12.4 | 3.5 | 3.5 | 7 | 2 | 4 139 | E-M5-M5 | 10 |
| | G1/8 | 2.5 | 15 | 3.5 | 5 | 13 | 1 | 4 138 | E-M5-1/8¹⁾ | 10 |
| | | | | | | | | | 534 204 | E-M5-1/8-100¹⁾ |
| G thread – Aluminium | | | | | | | | | | |
| G1/8 | G1/8 | 4.5 | 17 | 5 | 5 | 13 | 1 | 3 573 | E-1/8-1/8 | 10 |
| | G1/4 | 4.5 | 20 | 5 | 6.5 | 17 | 1 | 3 574 | E-1/8-1/4¹⁾ | 10 |
| | | | | | | | | | 534 205 | E-1/8-1/4-100¹⁾ |
| G1/4 | G1/4 | 6.5 | 22 | 6.5 | 6.5 | 17 | 1 | 3 575 | E-1/4-1/4 | 10 |
| | G3/8 | 6.5 | 24 | 6.5 | 8.5 | 19 | 10 | 3 576 | E-1/4-3/8¹⁾ | 10 |
| | | | | | | | | | 534 206 | E-1/4-3/8-50¹⁾ |
| G3/8 | G3/8 | 9.0 | 26 | 8.5 | 8.5 | 19 | 10 | 3 578 | E-3/8-3/8 | 10 |
| | G1/2 | 9.0 | 31 | 8.5 | 11.5 | 24 | 20 | 3 579 | E-3/8-1/2¹⁾ | 1 |
| | | | | | | | | | 534 207 | E-3/8-1/2-20¹⁾ |
| G1/2 | G1/2 | 13.0 | 34 | 11.5 | 11.5 | 24 | 20 | 3 580 | E-1/2-1/2 | 1 |
| | G3/4 | 13.0 | 35.5 | 11.5 | 12 | 32 | 35 | 3 582 | E-1/2-3/4 | 1 |
| G3/4 | G3/4 | 18.0 | 36 | 12 | 12 | 32 | 30 | 3 584 | E-3/4-3/4 | 1 |
| M thread – Brass | | | | | | | | | | |
| M7 | G1/8 | 4.5 | 17 | 5 | 5 | 13 | | 534 148 | E-M7-1/8-MS |  New 10 |
| G thread – Brass | | | | | | | | | | |
| G1/8 | G1/8 | 4.5 | 17 | 5 | 5 | 13 | 10 | 15 621 | E-1/8-1/8-MS | 10 |
| | G1/4 | 4.5 | 20 | 5 | 6.5 | 17 | 20 | 15 622 | E-1/8-1/4-MS | 10 |
| | G3/8 | 5.3 | 20.4 | 5 | 7 | 19 | 25 | 534 150 | E-1/8-3/8-MS |  New 10 |
| G1/4 | G1/4 | 6.5 | 22 | 6.5 | 6.5 | 17 | 20 | 15 623 | E-1/4-1/4-MS | 10 |
| | G3/8 | 6.5 | 24 | 6.5 | 8.5 | 19 | 30 | 15 624 | E-1/4-3/8-MS | 10 |
| | G1/2 | 8 | 25.5 | 6 | 8.5 | 24 | 30 | 534 149 | E-1/4-1/2-MS |  New 10 |
| G3/8 | G3/8 | 9 | 26 | 8.5 | 8.5 | 19 | 30 | 15 625 | E-3/8-3/8-MS | 10 |
| | G1/2 | 9 | 31 | 8.5 | 11.5 | 24 | 53 | 15 626 | E-3/8-1/2-MS | 1 |
| G1/2 | G1/2 | 13 | 34 | 11.5 | 11.5 | 24 | 52 | 15 627 | E-1/2-1/2-MS | 1 |
| | G3/4 | 13 | 35.5 | 11.5 | 12 | 32 | 100 | 15 628 | E-1/2-3/4-MS | 1 |
| G3/4 | G3/4 | 18 | 36 | 12 | 12 | 32 | 100 | 15 629 | E-3/4-3/4-MS | 1 |

* Packaging unit quantity
1) Free of copper, PTFE and silicone

 Core Range

Threaded fittings

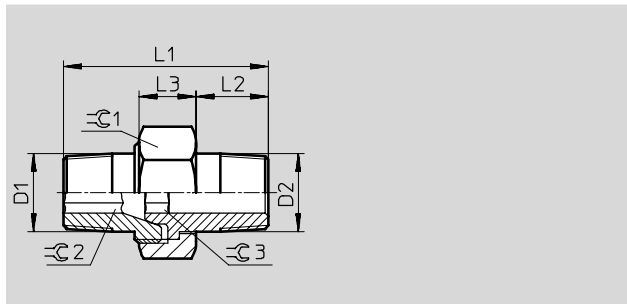
Technical data










Double nipple ESK

adjustable for angular compensation

Material:

Brass



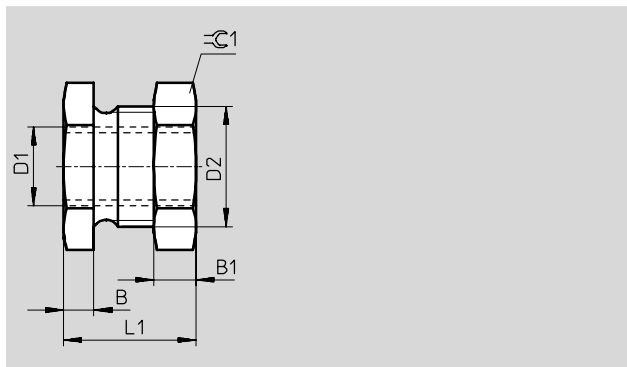
| Dimensions and ordering data | | | | | | | | | | |
|------------------------------|------|------|----|-----|------|------|------|----------|-------------|---|
| Connection | D2 | L1 | L2 | L3 | ⌀ C1 | ⌀ C2 | ⌀ C3 | Part No. | Type | PU* |
| D1 | | | | | | | | | | |
| R1/8 | R1/8 | 27 | 9 | 8.5 | 15 | 5 | 5 | 151 520 | ESK-1/8-1/8 |  New 1 |
| | R1/4 | 30.6 | 12 | 9.5 | 19 | 5 | 6 | 534 151 | ESK-1/8-1/4 |  New 1 |
| | R3/8 | 34.5 | 13 | 10 | 22 | 5 | 8 | 534 155 | ESK-1/8-3/8 |  New 1 |
| R1/4 | R1/4 | 34 | 12 | 9.5 | 19 | 6 | 6 | 151 521 | ESK-1/4-1/4 |  New 1 |
| | R3/8 | 36 | 13 | 10 | 22 | 6 | 8 | 534 152 | ESK-1/4-3/8 |  New 1 |
| | R1/2 | 40.5 | 16 | 12 | 27 | 6 | 12 | 534 153 | ESK-1/4-1/2 |  New 1 |
| R3/8 | R3/8 | 36 | 13 | 10 | 22 | 8 | 8 | 151 522 | ESK-3/8-3/8 |  New 1 |
| | R1/2 | 44 | 16 | 12 | 27 | 8 | 12 | 534 154 | ESK-3/8-1/2 |  New 1 |
| R1/2 | R1/2 | 44 | 16 | 12 | 27 | 12 | 12 | 151 523 | ESK-1/2-1/2 |  New 1 |

* Packaging unit quantity

Female bulkhead connector SCM

Material:

Blue anodised aluminium



| Dimensions and ordering data | | | | | | | | | |
|------------------------------|---------|---|------|------|------|------------|----------|---------|-----|
| Connection | D5 | B | B1 | L1 | ⌀ C1 | Weight [g] | Part No. | Type | PU* |
| D1 | | | | | | | | | |
| M5 | M10x1 | 4 | 3.5 | 15.5 | 13 | 5 | 9 969 | SCM-M5 | 1 |
| G1/8 | M14x1.5 | 5 | 5 | 20 | 17 | 10 | 9 970 | SCM-1/8 | 1 |
| G1/4 | M20x1.5 | 5 | 7 | 22 | 24 | 28 | 9 971 | SCM-1/4 | 1 |
| G3/8 | M24x1.5 | 8 | 8.5 | 26.5 | 27 | 34 | 9 972 | SCM-3/8 | 1 |
| G1/2 | M30x1.5 | 8 | 10.5 | 28.5 | 36 | 78 | 9 973 | SCM-1/2 | 1 |

* Packaging unit quantity

 Core Range

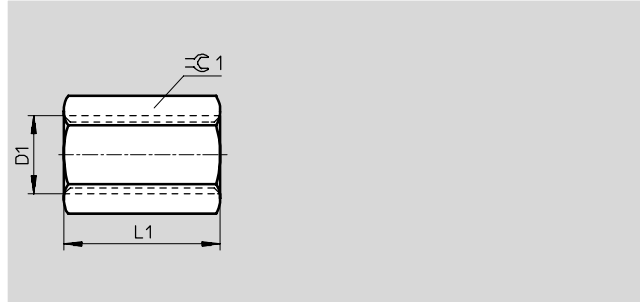
Threaded fittings

Technical data



Pipe coupling sleeve QM

Material:
Blue anodised aluminium
QM-M5-M5:
Steel

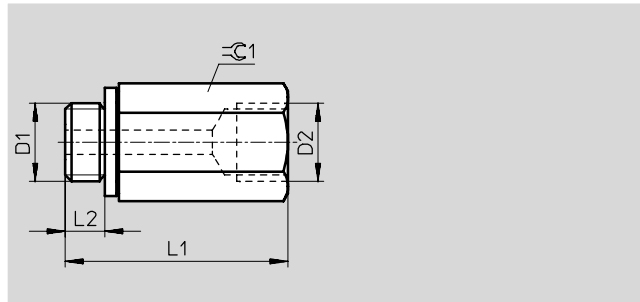


| Dimensions and ordering data | | | | | | |
|------------------------------|----|-----------------|------------|----------|-----------------------------------|-----|
| Connection | L1 | $\varnothing 1$ | Weight [g] | Part No. | Type | PU* |
| M5 | 12 | 7 | 1 | 3 560 | QM-M5-M5 | 10 |
| G $\frac{1}{8}$ | 22 | 13 | 6 | 2 254 | QM- $\frac{1}{8}$ - $\frac{1}{8}$ | 10 |
| G $\frac{1}{4}$ | 26 | 17 | 9 | 2 255 | QM- $\frac{1}{4}$ - $\frac{1}{4}$ | 10 |
| G $\frac{3}{8}$ | 32 | 22 | 16 | 2 256 | QM- $\frac{3}{8}$ - $\frac{3}{8}$ | 10 |
| G $\frac{1}{2}$ | 36 | 27 | 31 | 2 257 | QM- $\frac{1}{2}$ - $\frac{1}{2}$ | 1 |
| G $\frac{3}{4}$ | 36 | 32 | 36 | 4 226 | QM- $\frac{3}{4}$ - $\frac{3}{4}$ | 1 |
| G1 | 40 | 41 | 80 | 9 968 | QM-1-1 | 1 |

* Packaging unit quantity

Pipe coupling sleeve QM with sealing ring

Material:
Blue anodised aluminium
QM-M5:
Steel



| Dimensions and ordering data | | | | | | | | |
|------------------------------|-----------------|------|-----|-----------------|------------|----------|------------------------|-----|
| Connection | D2 | L1 | L2 | $\varnothing 1$ | Weight [g] | Part No. | Type | PU* |
| M5 | M5 | 18.7 | 3.4 | 7 | 4 | 36 169 | QM-M5-A/I | 10 |
| G $\frac{1}{8}$ | G $\frac{1}{8}$ | 25.6 | 4.8 | 13 | 7 | 36 170 | QM- $\frac{1}{8}$ -A/I | 10 |
| G $\frac{1}{4}$ | G $\frac{1}{4}$ | 36 | 5.5 | 17 | 15 | 36 171 | QM- $\frac{1}{4}$ -A/I | 10 |
| G $\frac{3}{8}$ | G $\frac{3}{8}$ | 37.8 | 6.5 | 19 | 16 | 36 172 | QM- $\frac{3}{8}$ -A/I | 10 |
| G $\frac{1}{2}$ | G $\frac{1}{2}$ | 52 | 7.5 | 24 | 36 | 187 387 | QM- $\frac{1}{2}$ A/I | 1 |

* Packaging unit quantity

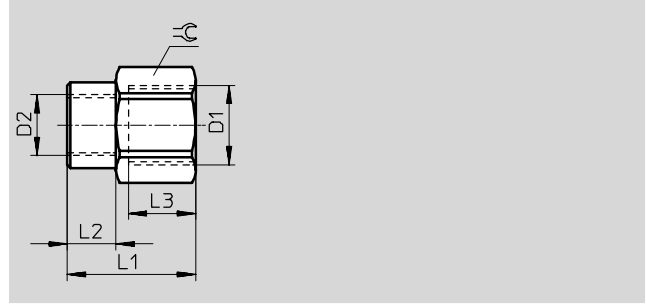
Core Range

Threaded fittings

Technical data

Reducing sleeve QMR

Material:
Nickel plated brass



| Dimensions and ordering data | | | | | | | | |
|-------------------------------|-------------------------------|----|----|----|----|----------|---|-----|
| Connection | | L1 | L2 | L3 | ⊖ | Part No. | Type | PU* |
| D1 | D2 | | | | | | | |
| M thread | | | | | | | | |
| G ¹ / ₈ | M5 | 17 | 9 | 5 | 14 | 153 281 | QMR- ¹ / ₈ -M5-B | 10 |
| G thread | | | | | | | | |
| G ¹ / ₄ | G ¹ / ₈ | 21 | 12 | 8 | 17 | 153 282 | QMR- ¹ / ₄ - ¹ / ₈ -B | 10 |
| G ³ / ₈ | G ¹ / ₄ | 25 | 12 | 11 | 21 | 153 283 | QMR- ³ / ₈ - ¹ / ₄ -B | 10 |
| G ¹ / ₂ | G ³ / ₈ | 33 | 14 | 12 | 24 | 153 284 | QMR- ¹ / ₂ - ³ / ₈ -B | 1 |

* Packaging unit quantity